

---

---



	.....	1
	.....	5
§ 1	.....	5
	.....	5
	.....	7
	.....	15
§	.....	17
	.....	17
	.....	21
	.....	22
	.....	24
§	.....	26
§	.....	28
	.....	28
	.....	28
	.....	29
	.....	30
§	.....	32
	.....	32
	.....	33
	.....	37
§	.....	46
	.....	46
	.....	49
	.....	50
§	.....	56
	.....	56
	.....	59
§	.....	60
	.....	60
	.....	63
	.....	64
§ 1	.....	64
	.....	64
	.....	66
	.....	67

\$	.....	69
	.....	69
	.....	71
\$	.....	75
	.....	75
	.....	75
	.....	76
.....	.....	77
\$	.....	78
	.....	78
	.....	80
\$	.....	82
\$	.....	100

---

196

21 8 22 2

21 8 1

(1)

(2)

---

162

146

	15	1	16
	34	0	34
	73 1	92 9	74 5

37

141

32

185

6

10

3

5

5

1

10

1

10

3

5

4

---

XI

n

2  
100

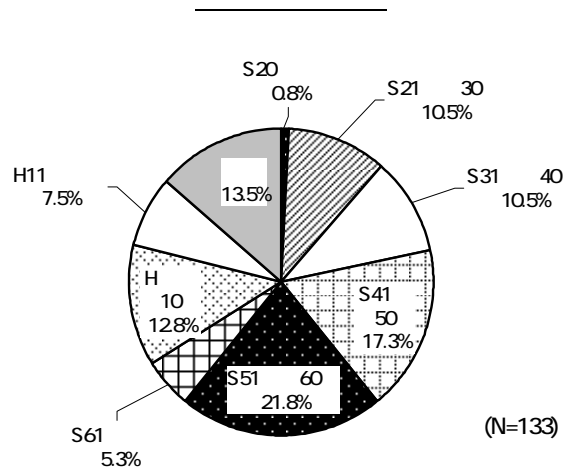
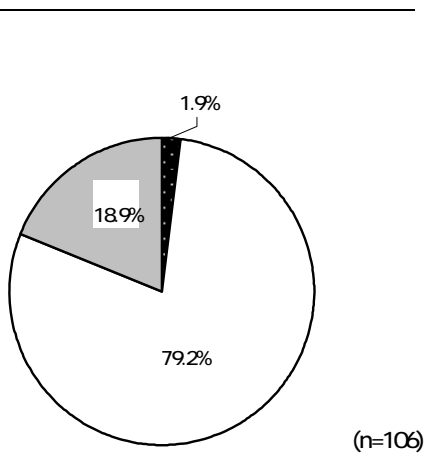
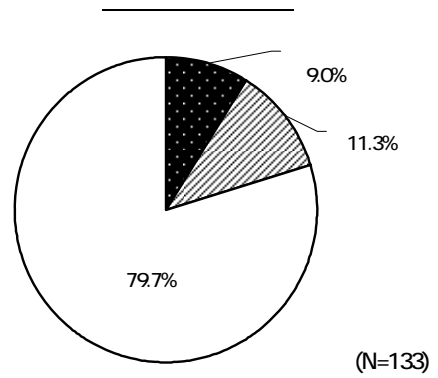
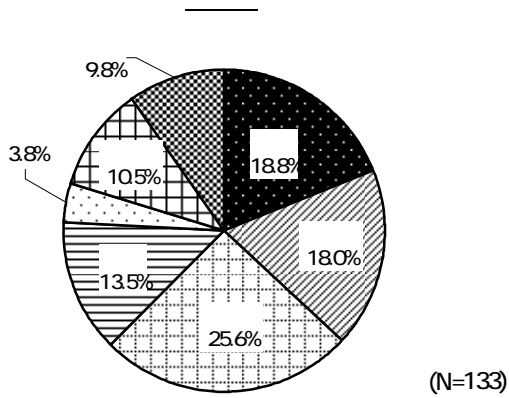
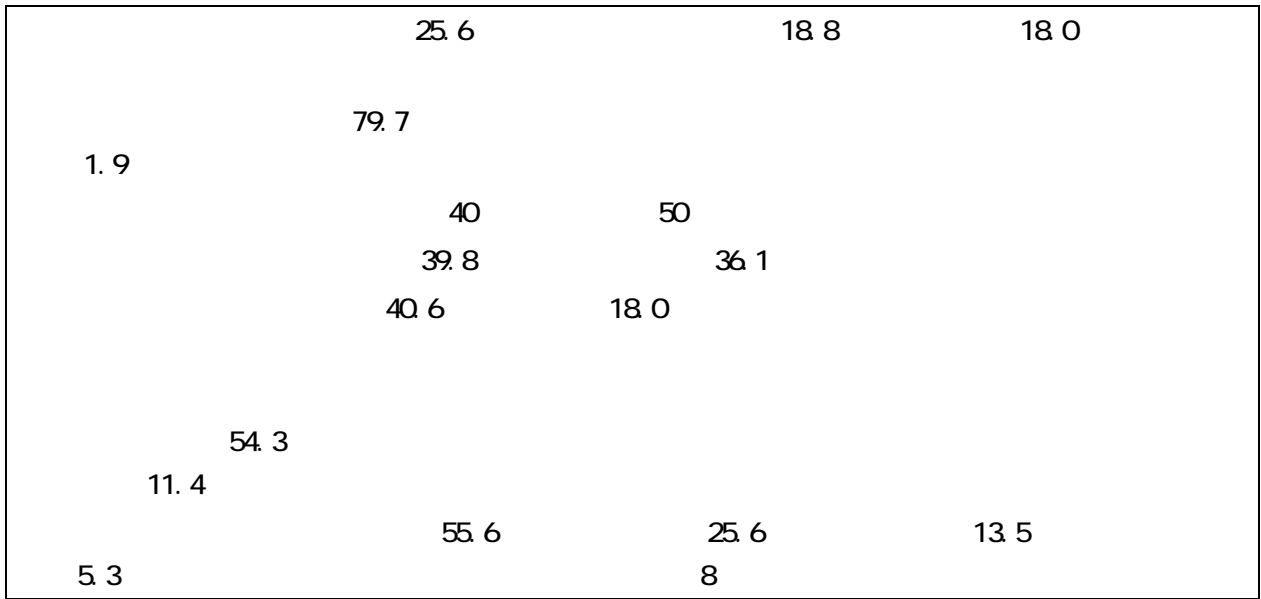
1

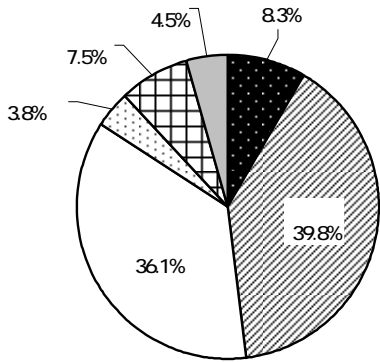

		( )

--	--

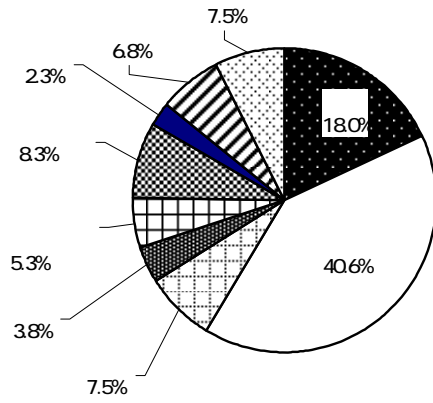
--	--



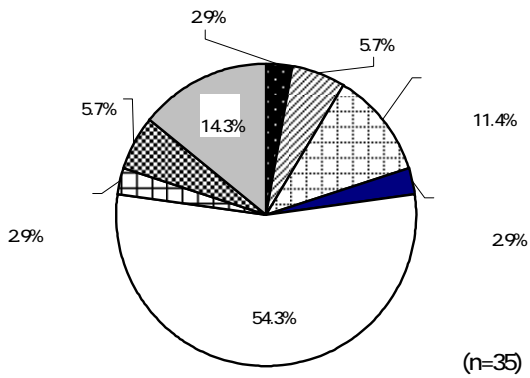




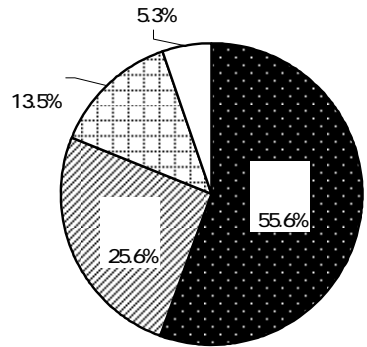
(N=133)

(N=133)

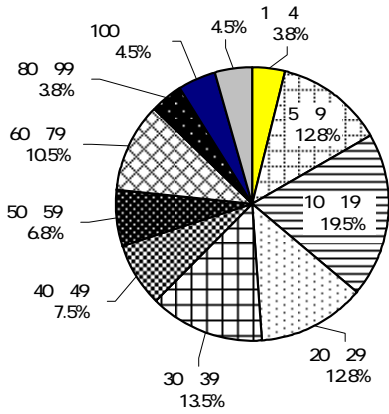



(n=35)

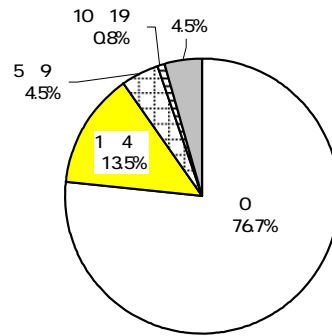



(N=133)

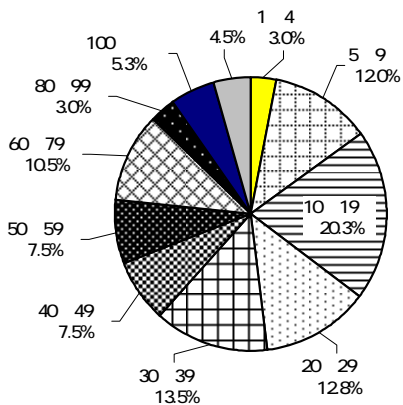
				10 19	20 3		
30 39	13 5		40			646	425
	3,568		4,639				
			19.5			12 0	10
19	9.8				24.8		
	23 3	65	15.0	10			
		65		629			
		13 6					



358  
(N=133)

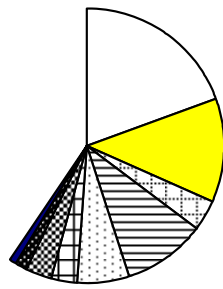


Q7  
(N=133)

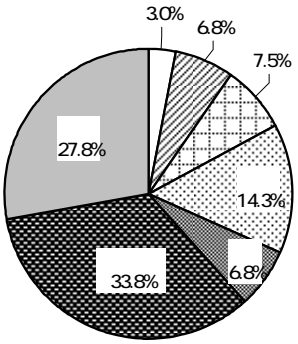


365  
(N=133)

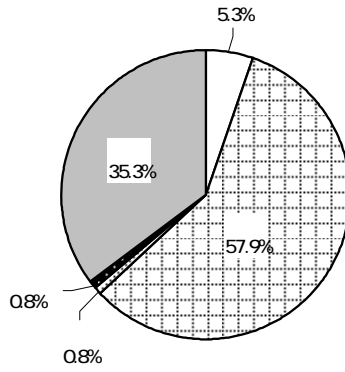
	4,639
	646
	425
	3,568



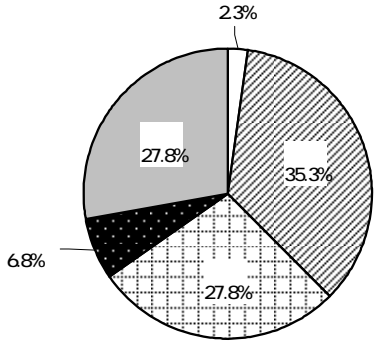
			33.8	
			57.9	
	35.3		27.8	63.1
	50	45.1	60	41.4
		70.7		
		10	25.6	
22.6			18.0	



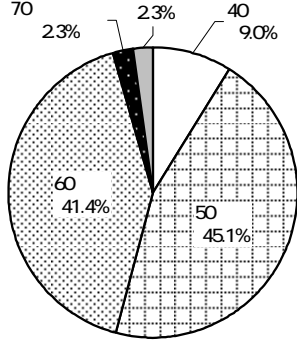
5.4  
(N=133)



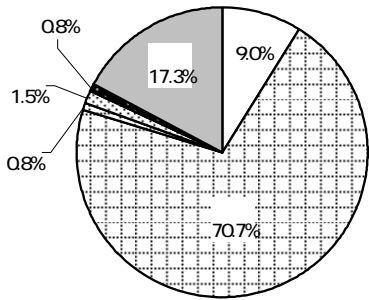
20  
(N=133)



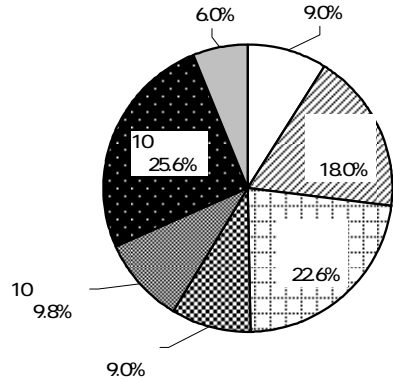
1.6  
(N=133)



(N=133)

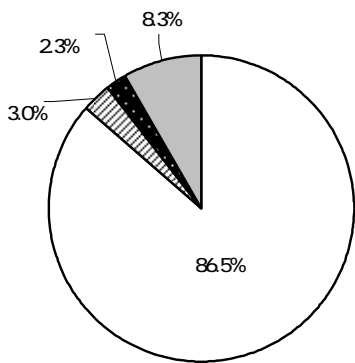


20  
(N=133)

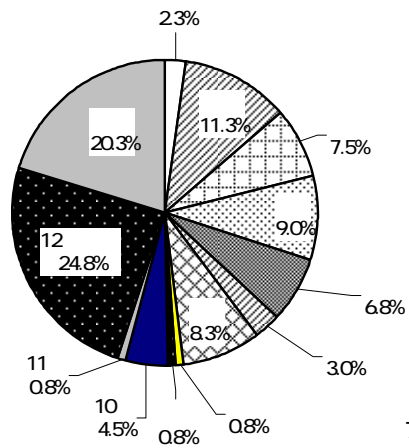


(N=133)

	86.5	8	3.0	2.3
	36.1		19.5	
9.0	12	24.8		11.3



1.2 /  
(N=133)

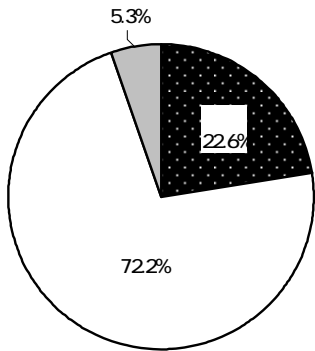


7.0 /  
(N=133)

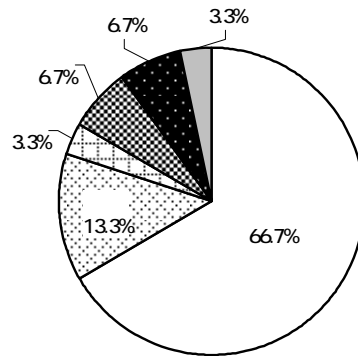
	1.5
	3.8
	2.3
	19.5
	36.1
	8.3
	2.3
	0.8
	2.3
10	3.8
11	1.5
12	3.8
	19.5



			22.6		
	73.3			41.7	
13.2					1.8
		66.7			
				3.1	
80	2.6				



(N=133)

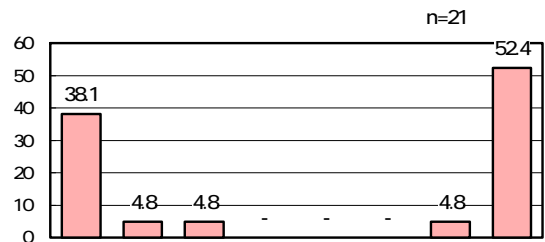
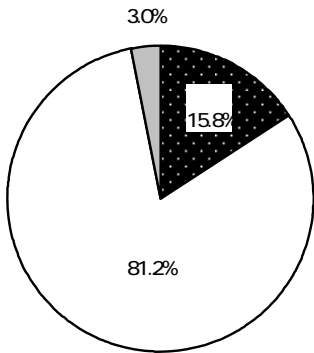
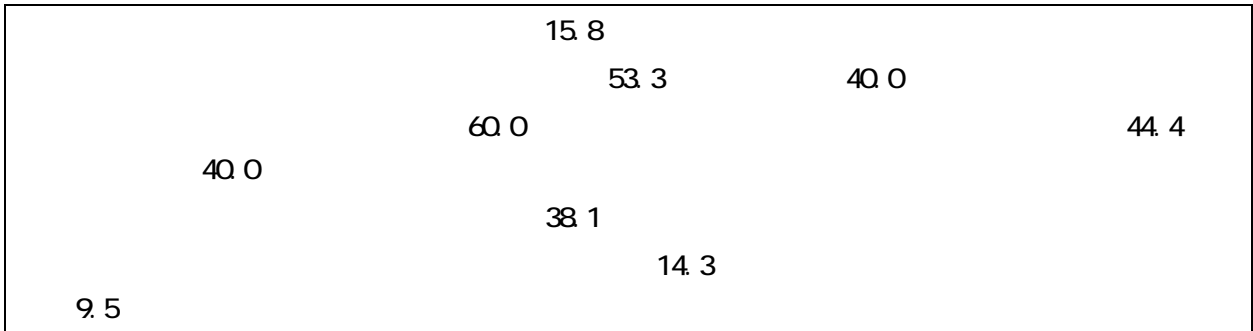


1.8  
n=30

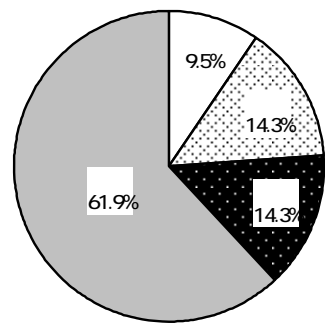
		100.0	22.6	72.2	5.3
		133	30	96	7
		100.0	41.7	50.0	8.3
		12	5	6	1
		100.0	73.3	26.7	-
		15	11	4	-
		100.0	13.2	81.1	5.7
		106	14	86	6

			100.0	66.7	13.3	3.3	6.7	6.7	3.3	1.8
			30	20	4	1	2	2	1	-
			100.0	60.0	40.0	-	-	-	-	1.4
			5	3	2	-	-	-	-	-
			100.0	81.8	9.1	-	-	9.1	-	1.5
			11	9	1	-	-	1	-	-
			100.0	57.1	7.1	7.1	14.3	7.1	7.1	2.2
			14	8	1	1	2	1	1	-
			100.0	81.8	18.2	-	-	-	-	1.2
			11	9	2	-	-	-	-	-
			100.0	85.7	-	14.3	-	-	-	1.3
			7	6	-	1	-	-	-	-
			100.0	30.0	20.0	-	20.0	20.0	10.0	3.1
			10	3	2	-	2	2	1	-
			100.0	100.0	-	-	-	-	-	1.0
			2	2	-	-	-	-	-	-
	19		100.0	87.5	-	12.5	-	-	-	1.3
			8	7	-	1	-	-	-	-
	20	39	100.0	66.7	33.3	-	-	-	-	1.3
			3	2	1	-	-	-	-	-
	40	59	100.0	100.0	-	-	-	-	-	1.0
			2	2	-	-	-	-	-	-
	60	79	100.0	60.0	20.0	-	-	20.0	-	2.0
			5	3	1	-	-	1	-	-
	80		100.0	50.0	16.7	-	-	16.7	16.7	2.6
			6	3	1	-	-	1	1	-
			100.0	50.0	16.7	-	33.3	-	-	2.2
			6	3	1	-	2	-	-	-



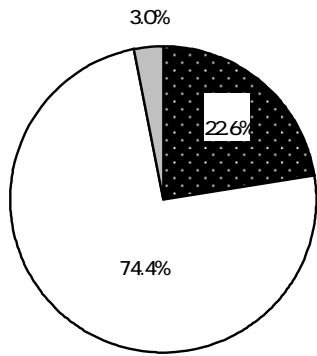


	100.0	15.8	81.2	3.0
	133	21	108	4
	100.0	8.3	91.7	-
	12	1	11	-
	100.0	53.3	40.0	6.7
	15	8	6	1
	100.0	11.3	85.8	2.8
	106	12	91	3
	100.0	-	100.0	-
	24	-	24	-
	100.0	7.4	87.0	5.6
	54	4	47	3
	100.0	40.0	50.0	10.0
	10	4	5	1
	-	-	-	-
	-	-	-	-
	100.0	60.0	40.0	-
	5	3	2	-
	100.0	28.6	71.4	-
	7	2	5	-
	100.0	27.3	72.7	-
	11	3	8	-
	100.0	33.3	66.7	-
	3	1	2	-
	100.0	44.4	55.6	-
	9	4	5	-
	100.0	-	100.0	-
	10	-	10	-

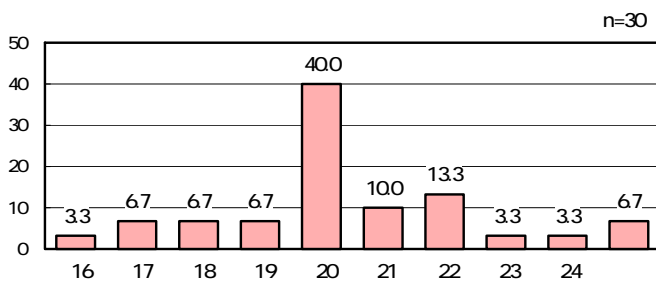
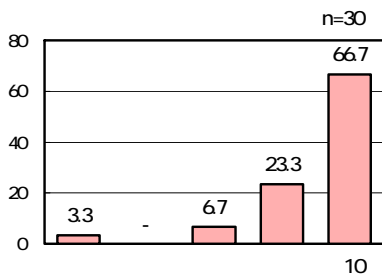


25 /  
n=21

		22.6		
		53.3	40.0	
		61.6		23.5
10.8				
	80	55.6		
		100.0		80.0
	10	66.7		
	20	40.0		

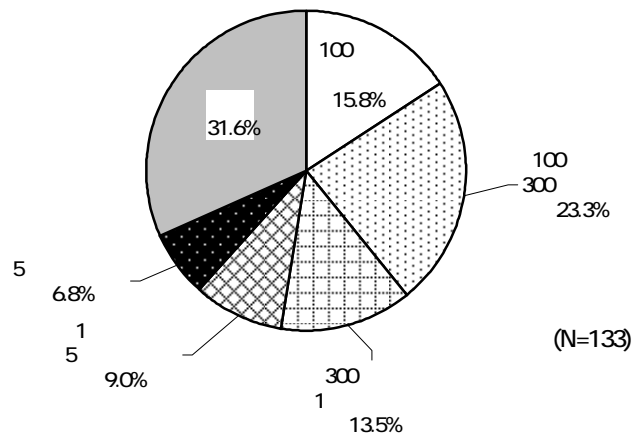


(N=133)



		100.0 133	22.6 30	74.4 99	3.0 4
		100.0 12	8.3 1	83.3 10	8.3 1
		100.0 15	53.3 8	40.0 6	6.7 1
		100.0 106	19.8 21	78.3 83	1.9 2
		100.0 74	10.8 8	85.1 63	4.1 3
		100.0 34	23.5 8	73.5 25	2.9 1
		100.0 18	61.1 11	38.9 7	-
		100.0 7	42.9 3	57.1 4	-
19		100.0 45	15.6 7	84.4 38	-
20	39	100.0 35	20.0 7	80.0 28	-
40	59	100.0 16	12.5 2	87.5 14	-
60	79	100.0 12	33.3 4	66.7 8	-
80		100.0 9	55.6 5	44.4 4	-
		100.0 16	31.3 5	43.8 7	25.0 4
		100.0 24	8.3 2	91.7 22	-
		100.0 54	11.1 6	81.5 44	7.4 4
		100.0 10	20.0 2	80.0 8	-
		-	-	-	-
		100.0 5	80.0 4	20.0 1	-
		100.0 7	57.1 4	42.9 3	-
		100.0 11	18.2 2	81.8 9	-
		100.0 3	100.0 3	-	-
		100.0 9	66.7 6	33.3 3	-
		100.0 10	10.0 1	90.0 9	-

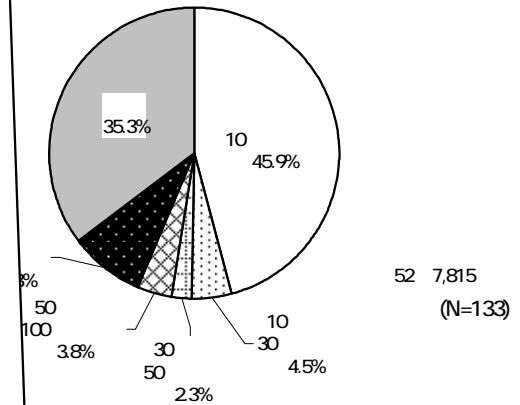
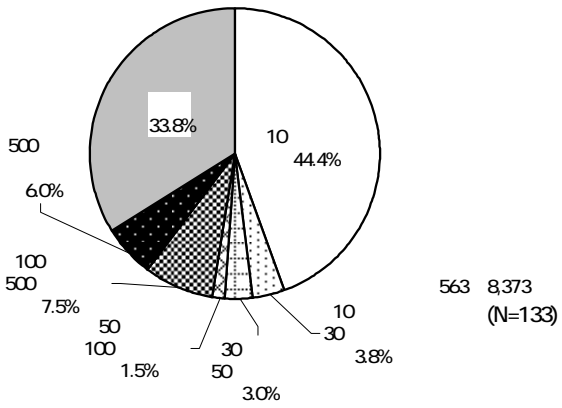
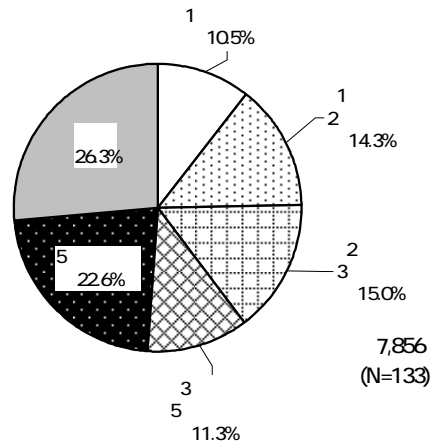
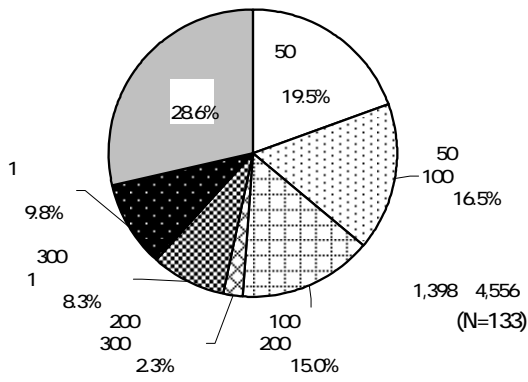
20	100	300	23.3	100
15.8	300	1	13.5	52.6
			15.8	
		80	44.4	100
26.7				19

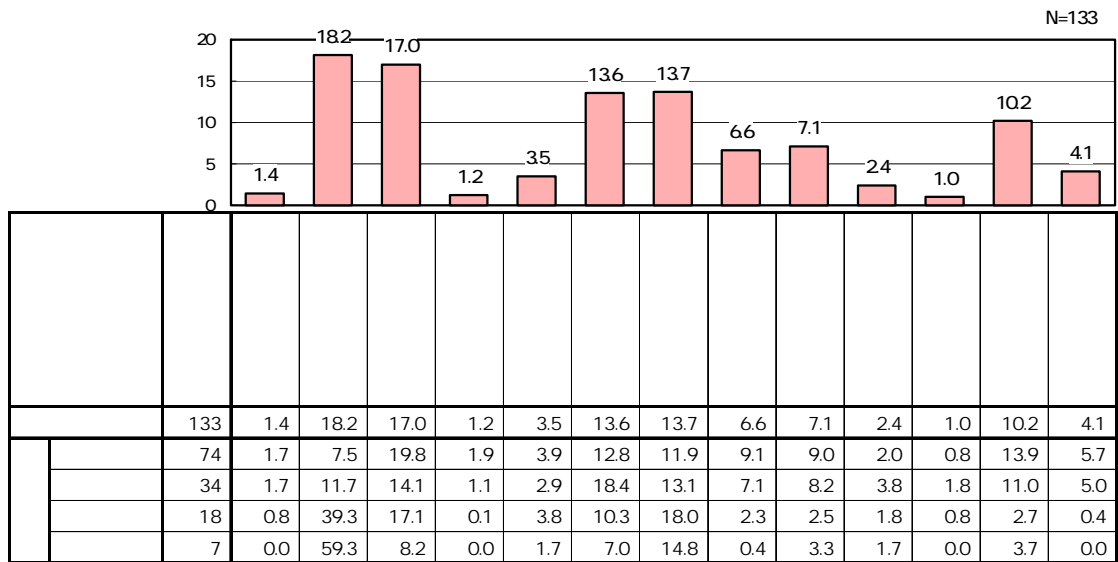
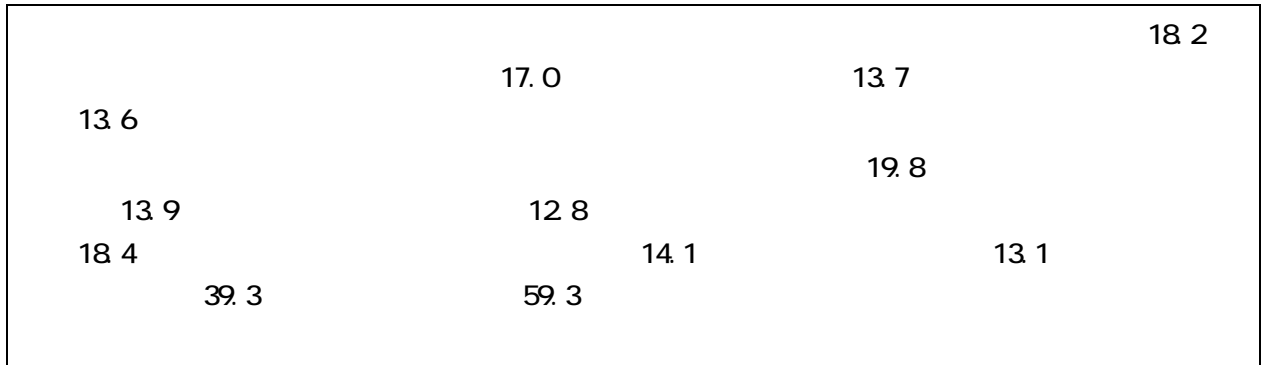


		100.0	15.8	23.3	13.5	9.0	6.8	31.6
		133	21	31	18	12	9	42
19		100.0	26.7	17.8	8.9	6.7	4.4	35.6
		45	12	8	4	3	2	16
20	39	100.0	17.1	37.1	8.6	14.3	2.9	20.0
		35	6	13	3	5	1	7
40	59	100.0	6.3	43.8	18.8	12.5	-	18.8
		16	1	7	3	2	-	3
60	79	100.0	-	25.0	33.3	8.3	8.3	25.0
		12	-	3	4	1	1	3
80		100.0	-	-	33.3	11.1	44.4	11.1
		9	-	-	3	1	4	1
		100.0	12.5	-	6.3	-	6.3	75.0
		16	2	-	1	-	1	12

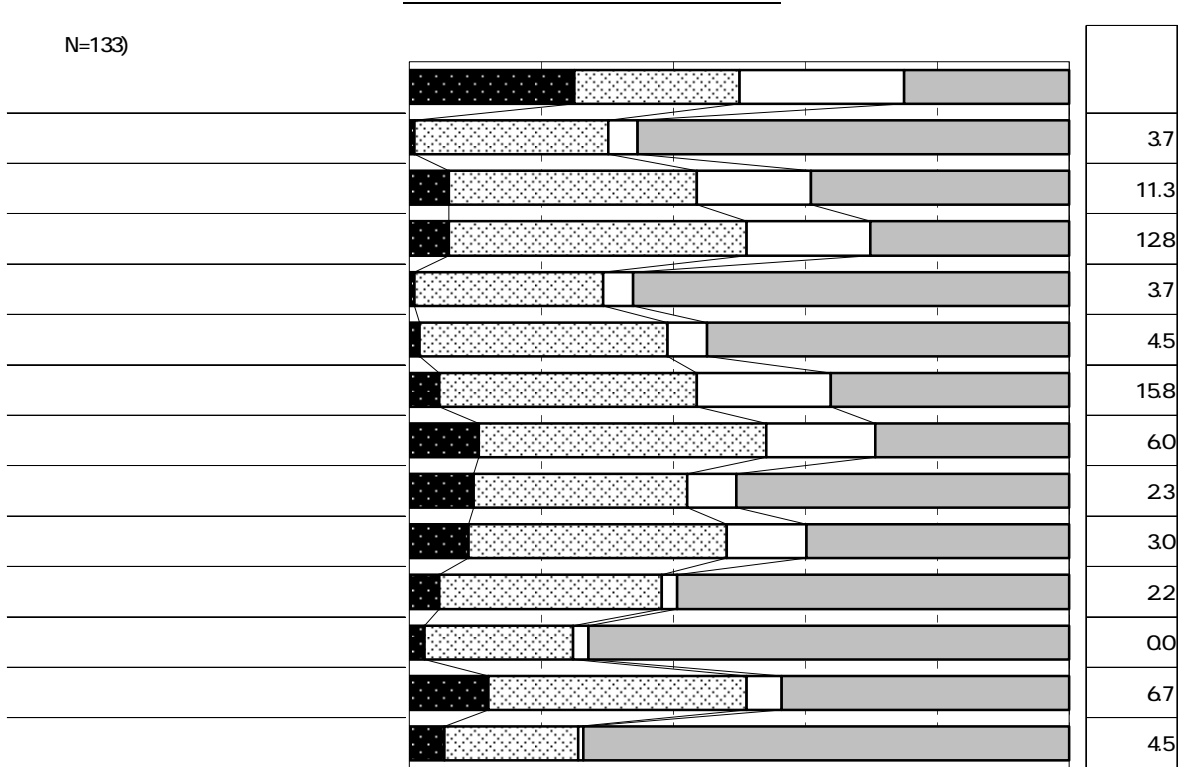
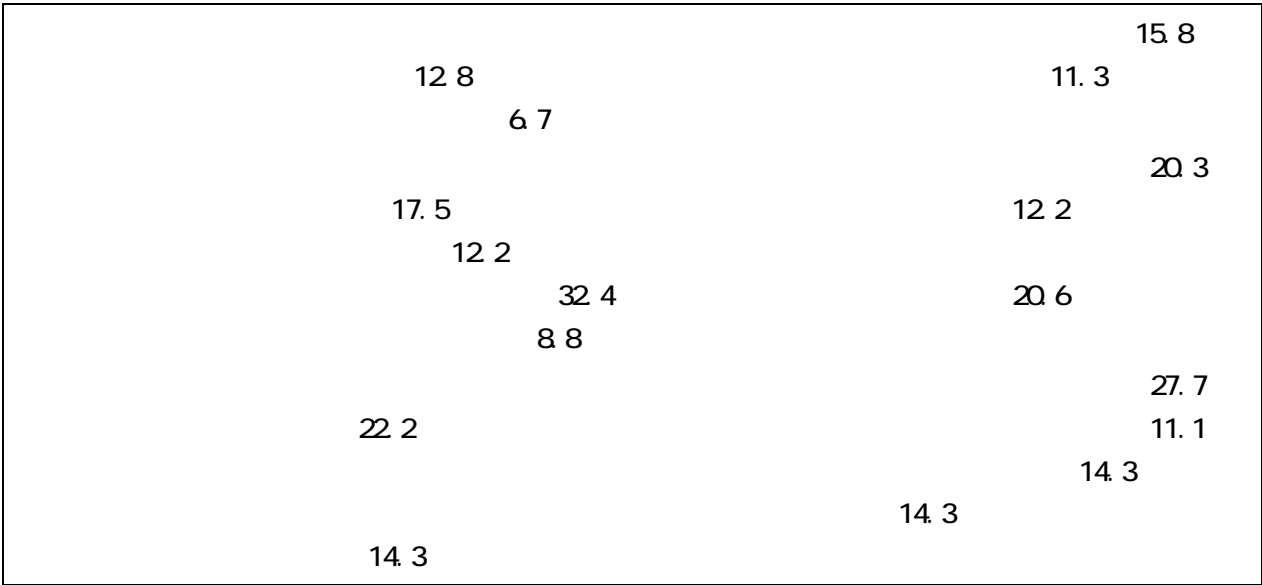
20		50	19.5
100	200	15.0	
			22
		14.3	
	10	44.4	
	10	45.9	
	10	30.8	
300		9.8	

	50	100	16.5
			15.0
10	30	9.8	100

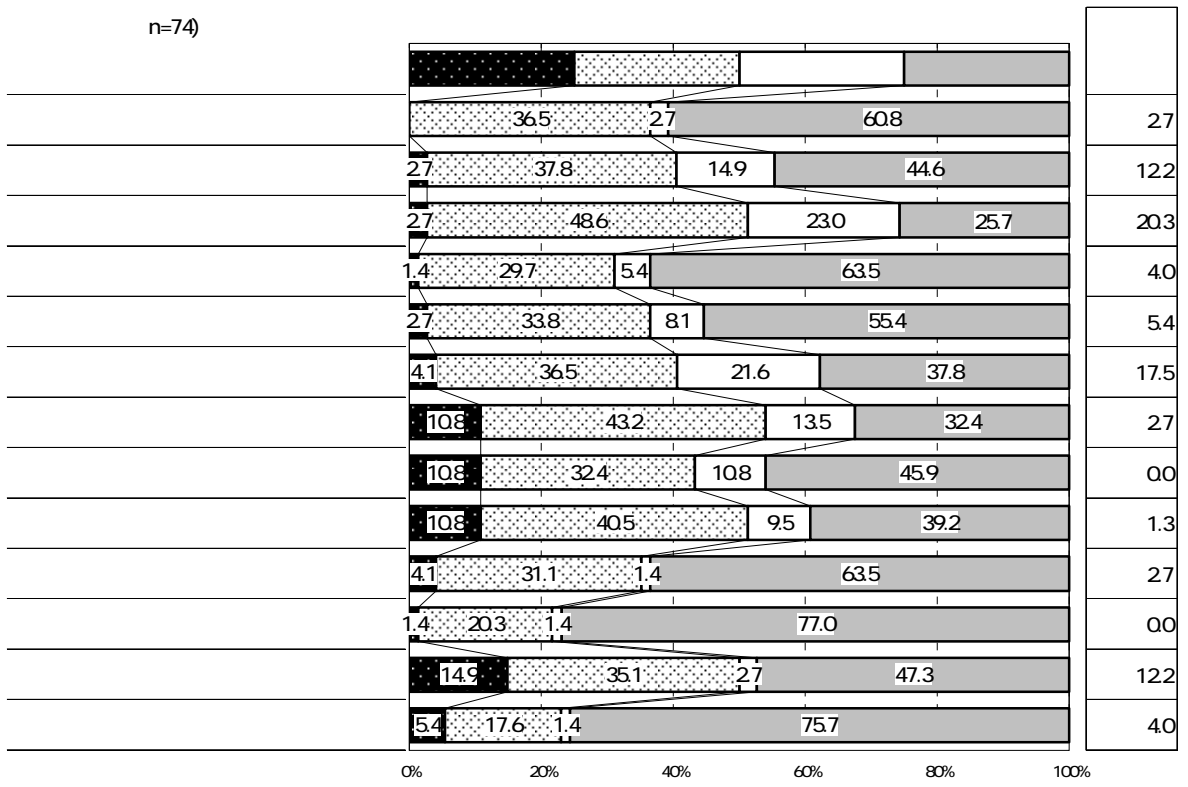




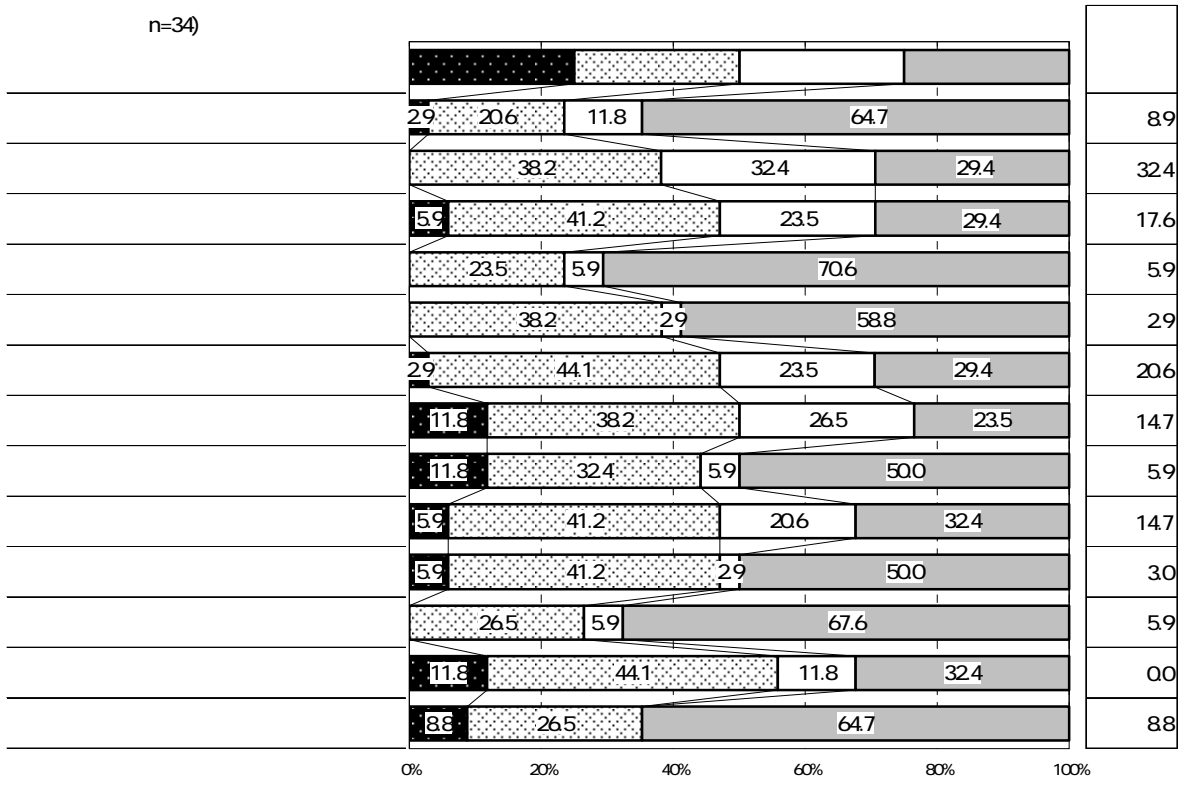
		N=133)			n=74			n=34			n=18			n=7		
		59	0.5	1.4	32	0.5	1.7	20	0.6	1.7	7	0.5	0.8	0	0.0	0.0
		752	6.4	18.2	143	2.2	7.5	137	4.3	11.7	328	23.4	39.3	144	24.0	59.3
		703	6.0	17.0	376	5.8	19.8	164	5.1	14.1	143	10.2	17.1	20	3.3	8.2
		50	0.4	1.2	36	0.6	1.9	13	0.4	1.1	1	0.1	0.1	0	0.0	0.0
		144	1.2	3.5	74	1.1	3.9	34	1.1	2.9	32	2.3	3.8	4	0.7	1.7
		562	4.8	13.6	244	3.8	12.8	215	6.7	18.4	86	6.1	10.3	17	2.8	7.0
		566	4.8	13.7	227	3.5	11.9	153	4.8	13.1	150	10.7	18.0	36	6.0	14.8
		275	2.4	6.6	172	2.7	9.1	83	2.6	7.1	19	1.4	2.3	1	0.2	0.4
		296	2.5	7.1	171	2.6	9.0	96	3.0	8.2	21	1.5	2.5	8	1.3	3.3
		101	0.9	2.4	38	0.6	2.0	44	1.4	3.8	15	1.1	1.8	4	0.7	1.7
		43	0.4	1.0	15	0.2	0.8	21	0.7	1.8	7	0.5	0.8	0	0.0	0.0
		424	3.6	10.2	264	4.1	13.9	128	4.0	11.0	23	1.6	2.7	9	1.5	3.7
		3,975	34.0	95.9	1,792	27.6	94.3	1,108	34.6	95.0	832	59.4	99.6	243	40.5	100.0
		169	1.4	4.1	108	1.7	5.7	58	1.8	5.0	3	0.2	0.4	0	0.0	0.0
		4,144	35.4	100.0	1,900	29.2	100.0	1,166	36.4	100.0	835	59.6	100.0	243	40.5	100.0



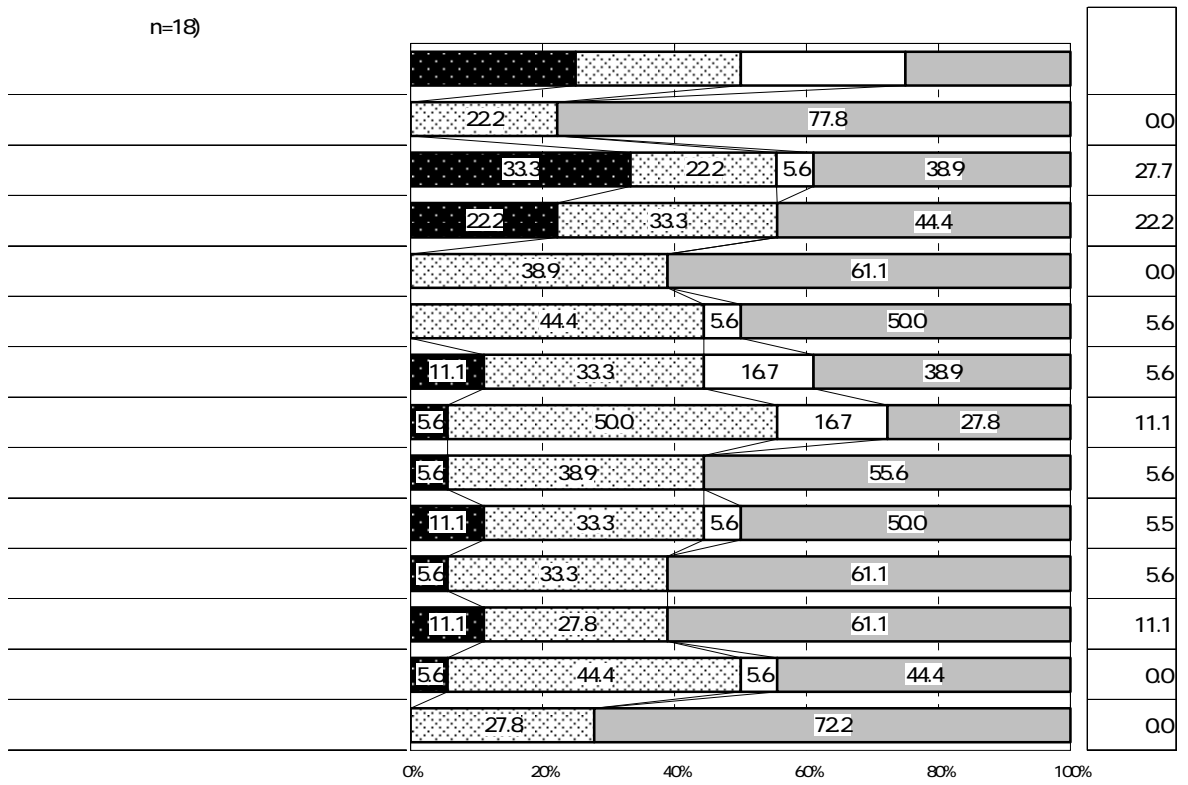
n=74)



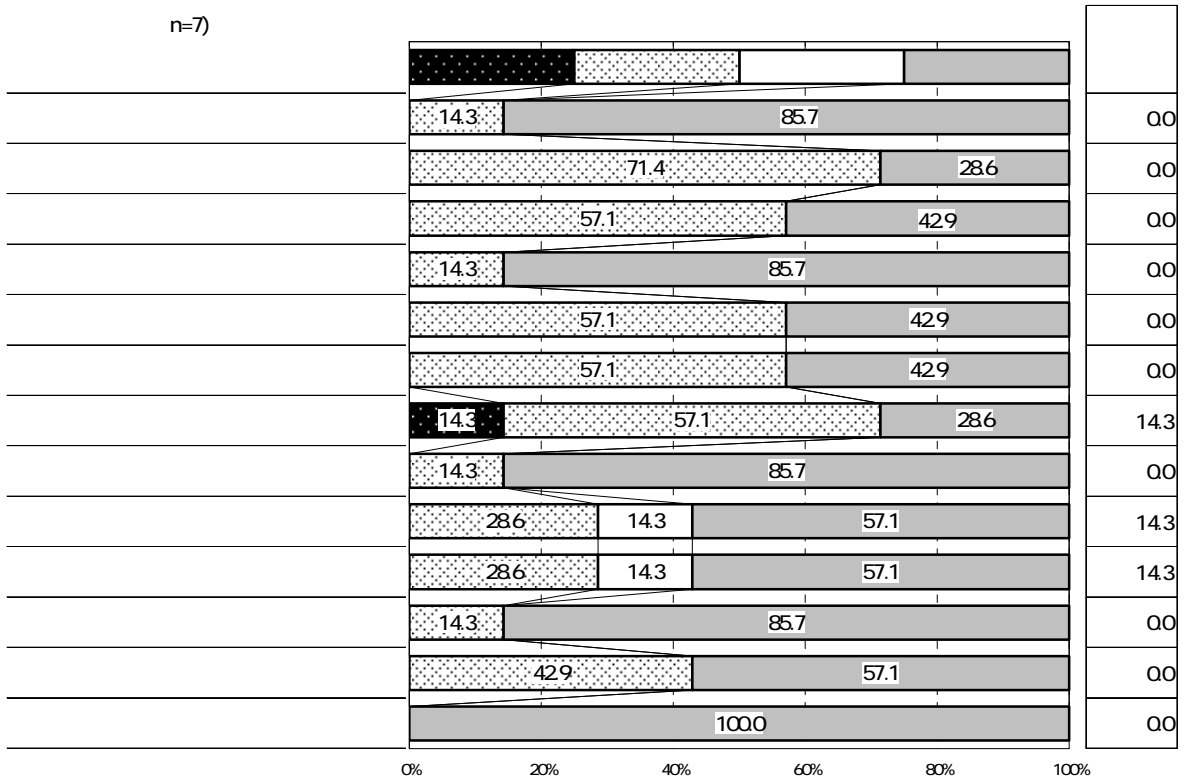
n=34)



n=18)

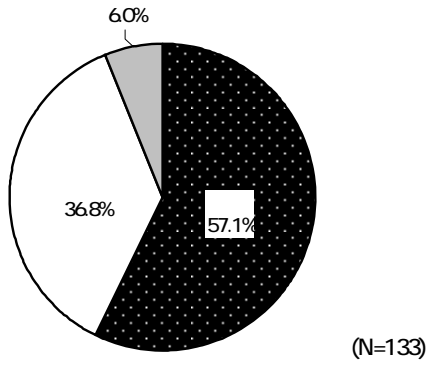
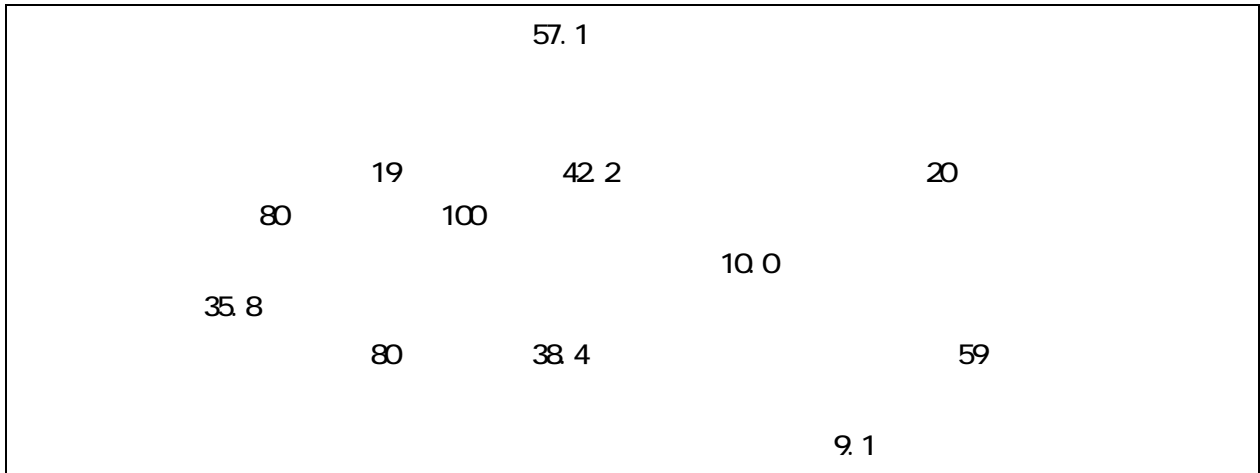


n=7)









	n=76	10.0	9.1
		5.0	3.3
		6.7	6.5
		35.8	34.4
		5.6	5.0
19		3.5	2.7
20	39	6.3	5.2
40	59	4.2	3.2
60	79	11.3	8.4
80		38.4	36.8
		3.3	2.0

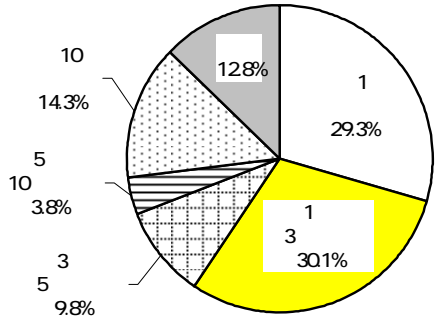
		100.0	57.1	36.8
		133	76	49
		100.0	51.4	43.2
		74	38	32
		100.0	55.9	41.2
		34	19	14
		100.0	72.2	16.7
		18	13	3
		100.0	85.7	-
		7	6	-
19		100.0	42.2	57.8
		45	19	26
20	39	100.0	71.4	25.7
		35	25	9
40	59	100.0	56.3	43.8
		16	9	7
60	79	100.0	75.0	25.0
		12	9	3
80		100.0	100.0	-
		9	9	-
		100.0	31.3	25.0
		16	5	4



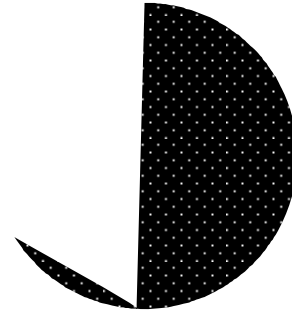


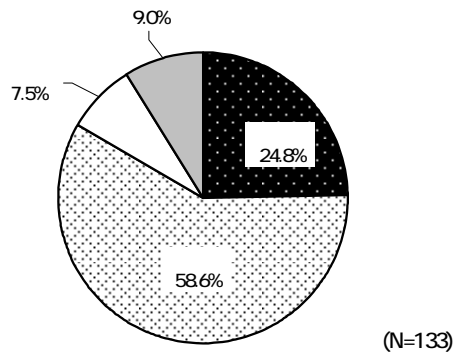
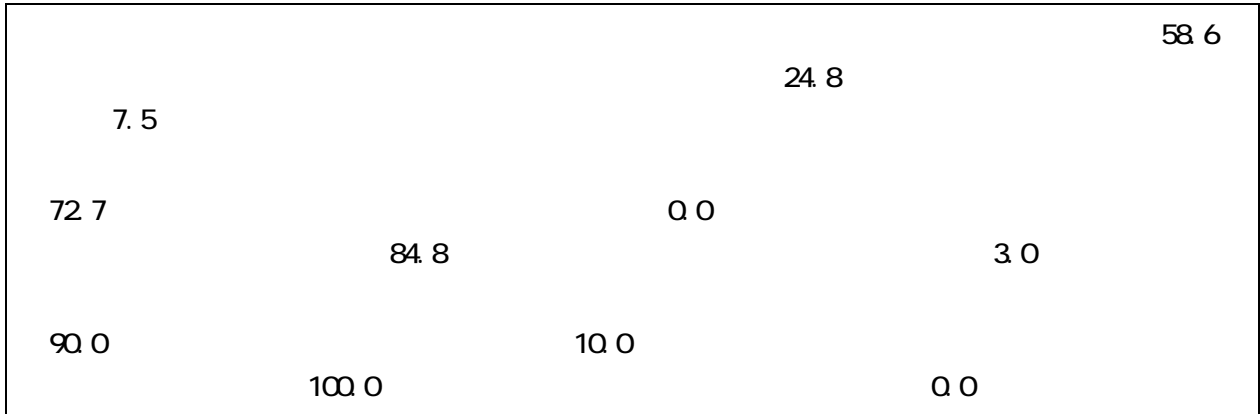


69.2	30.4
	26.1



(N=133)





		38.5	33.3	60
33.3		20.39		40.59
				38.8
		36.9	63.1	

		N=133)	n=74	n=34	n=18	n=7
		100.0	100.0	100.0	100.0	100.0
	20	9.4	7.9	12.0	8.8	15.5
	20 39	22.1	18.8	22.2	33.0	38.8
	40 59	33.7	34.8	32.5	33.3	26.3
	60	34.8	38.5	33.3	24.9	19.5
		36.9	39.3	33.6	33.8	35.0
	20	3.7	3.5	4.0	3.3	6.3
	20 39	8.4	8.0	7.5	11.5	12.3
	40 59	12.3	13.9	9.6	11.7	8.7
	60	12.6	14.1	12.4	7.3	7.7
		63.1	60.8	66.4	66.3	65.0
	20	5.7	4.4	8.0	5.4	11.0
	20 39	13.4	10.3	14.7	21.5	24.3
	40 59	21.6	21.6	22.2	21.8	14.7
	60	22.6	24.6	21.6	17.6	15.0

2

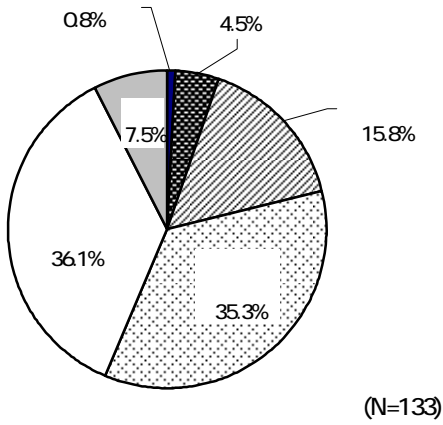
		41.6	
		45.6	47.4
		57.9	63.8

		N=133)	n=74	n=34	n=18	n=7
		100.0	100.0	100.0	100.0	100.0
		41.6	45.6	47.4	16.3	14.5
		21.6	25.4	19.3	11.6	5.5
		20.2	10.6	19.4	57.9	63.8
		16.9	18.8	13.9	14.3	16.3

2

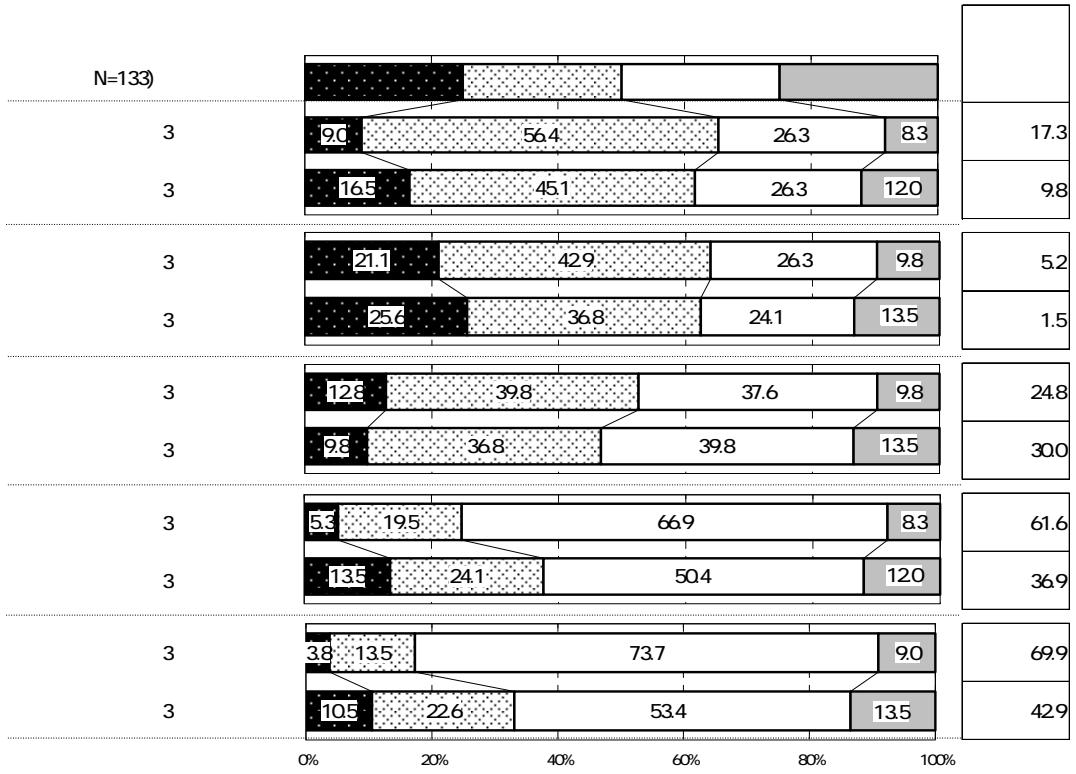


		36.1		35.3
			0.8	
	4.5			
		39		
§				30.9
	44.2			
			25.8	
	46.3			



		100.0	0.8	4.5	15.8	35.3	36.1	7.5
		133	1	6	21	47	48	10
		100.0	-	4.1	13.5	29.7	47.3	5.4
		74	-	3	10	22	35	4
		100.0	2.9	-	20.6	41.2	29.4	5.9
		34	1	-	7	14	10	2
		100.0	-	16.7	22.2	33.3	16.7	11.1
		18	-	3	4	6	3	2
		100.0	-	-	-	71.4	-	28.6
		7	-	-	-	5	-	2
	19	100.0	2.2	6.7	13.3	37.8	40.0	-
		45	1	3	6	17	18	-
	20	100.0	-	-	17.1	31.4	45.7	5.7
	39	35	-	-	6	11	16	2
	40	100.0	-	-	18.8	43.8	37.5	-
	59	16	-	-	3	7	6	-
	60	100.0	-	8.3	16.7	50.0	25.0	-
	79	12	-	1	2	6	3	-
	80	100.0	-	11.1	33.3	44.4	-	11.1
		9	-	1	3	4	-	1
		100.0	-	6.3	6.3	12.5	31.3	43.8
		16	-	1	1	2	5	7
		100.0	1.2	6.2	18.5	40.7	30.9	2.5
		81	1	5	15	33	25	2
		100.0	-	1.9	11.5	26.9	44.2	15.4
		52	-	1	6	14	23	8
		100.0	1.5	7.6	19.7	43.9	25.8	1.5
		66	1	5	13	29	17	1
		100.0	-	1.5	11.9	26.9	46.3	13.4
		67	-	1	8	18	31	9

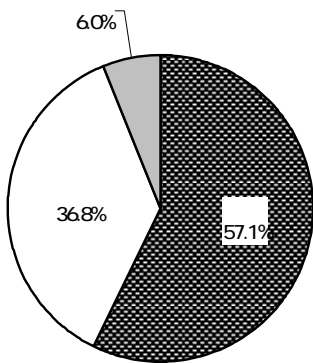
3	1.5
---	-----



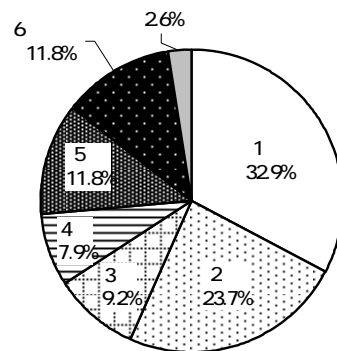
		100.0 133	16.5 22	45.1 60	26.3 35	12.0 16	25.6 34	36.8 49	24.1 32	13.5 18	9.8 13	36.8 49	39.8 53	13.5 18
		100.0 81	22.2 18	50.6 41	22.2 18	4.9 4	33.3 27	38.3 31	22.2 18	6.2 5	13.6 11	44.4 36	37.0 30	4.9 4
		100.0 52	7.7 4	36.5 19	32.7 17	23.1 12	13.5 7	34.6 18	26.9 14	25.0 13	3.8 2	25.0 13	44.2 23	26.9 14
		100.0 66	28.8 19	53.0 35	15.2 10	3.0 2	37.9 25	42.4 28	15.2 10	4.5 3	16.7 11	53.0 35	25.8 17	4.5 3
		100.0 67	4.5 3	37.3 25	37.3 25	20.9 14	13.4 9	31.3 21	32.8 22	22.4 15	3.0 2	20.9 14	53.7 36	22.4 15
		100.0 75	22.7 17	50.7 38	22.7 17	4.0 3	34.7 26	37.3 28	21.3 16	6.7 5	12.0 9	44.0 33	37.3 28	6.7 5
		100.0 44	11.4 5	40.9 18	38.6 17	9.1 4	18.2 8	40.9 18	31.8 14	9.1 4	9.1 4	34.1 15	47.7 21	9.1 4
		100.0 14	- -	28.6 4	7.1 1	64.3 9	- -	21.4 3	14.3 2	64.3 9	- -	7.1 1	28.6 4	64.3 9

		100.0 133	13.5 18	24.1 32	50.4 67	12.0 16	10.5 14	22.6 30	53.4 71	13.5 18
		100.0 81	18.5 15	28.4 23	49.4 40	3.7 3	13.6 11	28.4 23	51.9 42	6.2 5
		100.0 52	5.8 3	17.3 9	51.9 27	25.0 13	5.8 3	13.5 7	55.8 29	25.0 13
		100.0 66	24.2 16	30.3 20	42.4 28	3.0 2	18.2 12	31.8 21	43.9 29	6.1 4
		100.0 67	3.0 2	17.9 12	58.2 39	20.9 14	3.0 2	13.4 9	62.7 42	20.9 14
		100.0 75	21.3 16	26.7 20	46.7 35	5.3 4	16.0 12	28.0 21	48.0 36	8.0 6
		100.0 44	4.5 2	25.0 11	63.6 28	6.8 3	4.5 2	18.2 8	70.5 31	6.8 3
		100.0 14	- -	7.1 1	28.6 4	64.3 9	- -	7.1 1	28.6 4	64.3 9

			57.1						
				60.8		70.6			
	27.8			28.6					
		155		65					233
	3.2					23.7			
		32.9							
	11.8	1							
								15.6	
	3.4								



(N=133)



32  
(n=76)

	100.0	57.1	36.8	6.0
	133	76	49	8
	100.0	60.8	33.8	5.4
	74	45	25	4
	100.0	70.6	23.5	5.9
	34	24	8	2
	100.0	27.8	61.1	11.1
	18	5	11	2
	100.0	28.6	71.4	-
	7	2	5	-

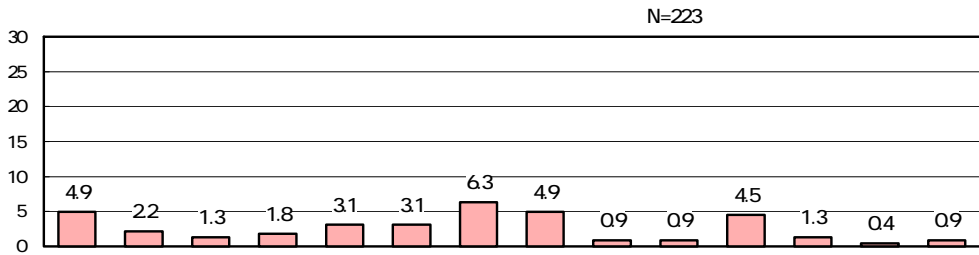
	100.0	32.9	23.7	9.2	7.9	11.8	11.8	2.6	233
	76	25	18	7	6	9	9	2	3.2
	100.0	28.9	26.7	11.1	6.7	11.1	15.6	-	155
	45	13	12	5	3	5	7	-	3.4
	100.0	37.5	20.8	4.2	12.5	12.5	8.3	4.2	65
	24	9	5	1	3	3	2	1	2.8
	100.0	40.0	-	20.0	-	20.0	-	20.0	10
	5	2	-	1	-	1	-	1	2.5
	100.0	50.0	50.0	-	-	-	-	-	3
	2	1	1	-	-	-	-	-	1.5

---

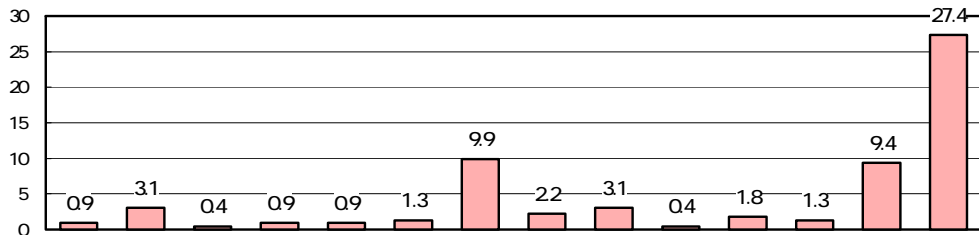
20.6      21.5  
                 19.3

20.7  
27.7

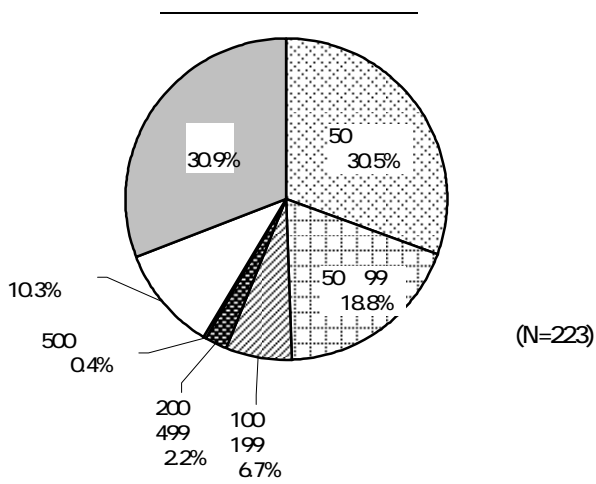
				9.9		6.3		
4.9			4.9			4.5		
					10.3			
6.9				9.2			6.2	
	6.2							



	100.0	4.9	2.2	1.3	1.8	3.1	3.1	6.3	4.9	0.9	0.9	4.5	1.3	0.4	0.9
	223	11	5	3	4	7	7	14	11	2	2	10	3	1	2
	100.0	4.1	1.4	0.7	2.8	4.1	4.1	5.5	4.8	0.7	0.7	6.9	2.1	-	1.4
	145	6	2	1	4	6	6	8	7	1	1	10	3	-	2
	100.0	6.2	3.1	3.1	-	1.5	1.5	9.2	3.1	1.5	-	-	-	1.5	-
	65	4	2	2	-	1	1	6	2	1	-	-	-	1	-
	100.0	10.0	-	-	-	-	-	-	10.0	-	10.0	-	-	-	-
	10	1	-	-	-	-	-	-	1	-	1	-	-	-	-
	100.0	-	33.3	-	-	-	-	-	33.3	-	-	-	-	-	-
	3	-	1	-	-	-	-	-	1	-	-	-	-	-	-

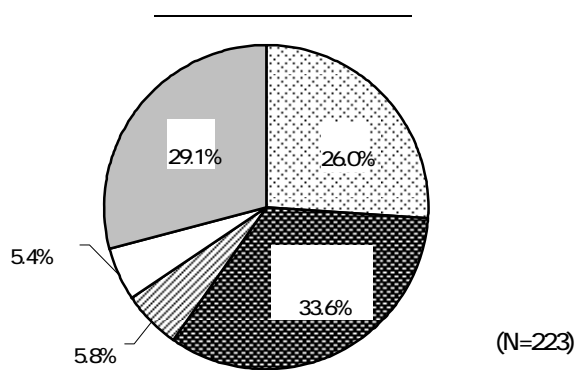


	100.0	0.9	3.1	0.4	0.9	0.9	1.3	9.9	2.2	3.1	0.4	1.8	1.3	9.4	27.4
	223	2	7	1	2	2	3	22	5	7	1	4	3	21	61
	100.0	0.7	2.8	0.7	-	0.7	2.1	10.3	2.1	3.4	-	1.4	1.4	4.1	31.0
	145	1	4	1	-	1	3	15	3	5	-	2	2	6	45
	100.0	1.5	1.5	-	3.1	1.5	-	6.2	3.1	3.1	1.5	1.5	1.5	20.0	24.6
	65	1	1	-	2	1	-	4	2	2	1	1	1	13	16
	100.0	-	20.0	-	-	-	-	30.0	-	-	-	10.0	-	10.0	-
	10	-	2	-	-	-	-	3	-	-	-	1	-	1	-
	100.0	-	-	-	-	-	-	-	-	-	-	-	-	33.3	-
	3	-	-	-	-	-	-	-	-	-	-	-	-	1	-



		50	
30.5			50.99
18.8			
33.1		27.7	50
			50
99	50.0		

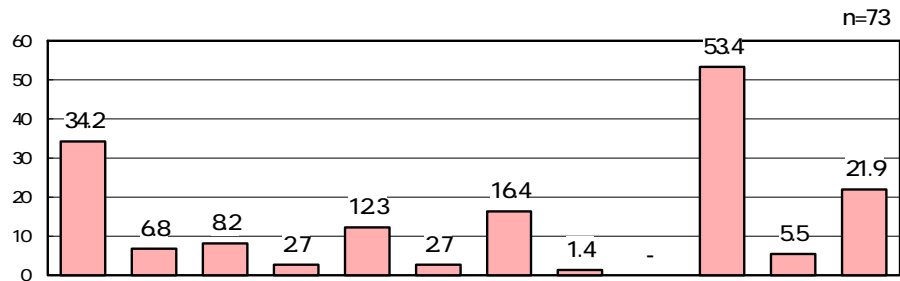
		50	50	100	200	500		
			99	199	499			
	100.0	30.5	18.8	6.7	2.2	0.4	10.3	30.9
	223	68	42	15	5	1	23	69
	100.0	33.1	17.9	2.1	1.4	-	13.1	32.4
	145	48	26	3	2	-	19	47
	100.0	27.7	16.9	12.3	3.1	1.5	6.2	32.3
	65	18	11	8	2	1	4	21
	100.0	10.0	50.0	30.0	10.0	-	-	-
	10	1	5	3	1	-	-	-
	100.0	33.3	-	33.3	-	-	-	33.3
	3	1	-	1	-	-	-	1



		33.6	
33.6			26.0
26.0			
35.4		29.0	

	100.0	26.0	33.6	5.8	5.4	29.1
	223	58	75	13	12	65
	100.0	23.4	29.0	4.8	6.9	35.9
	145	34	42	7	10	52
	100.0	36.9	35.4	4.6	3.1	20.0
	65	24	23	3	2	13
	100.0	-	90.0	10.0	-	-
	10	-	9	1	-	-
	100.0	-	33.3	66.7	-	-
	3	-	1	2	-	-

	53.4	
34.2		
	40.0	
39		40



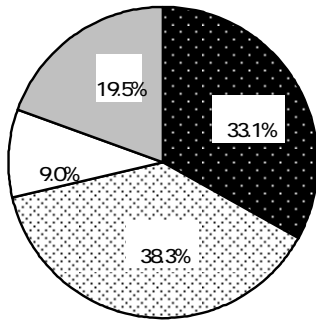
		100.0	34.2	6.8	8.2	2.7	12.3	2.7	16.4	1.4	-	53.4	5.5	21.9
		73	25	5	6	2	9	2	12	1	-	39	4	16
		100.0	55.6	11.1	11.1	-	-	-	-	-	-	55.6	11.1	-
		9	5	1	1	-	-	-	-	-	-	5	1	-
		100.0	66.7	-	-	-	-	-	33.3	-	-	50.0	-	33.3
		6	4	-	-	-	-	2	-	-	3	-	2	
		100.0	27.6	6.9	8.6	3.4	15.5	3.4	17.2	1.7	-	53.4	5.2	24.1
		58	16	4	5	2	9	2	10	1	-	31	3	14
		100.0	40.0	4.4	4.4	2.2	17.8	2.2	20.0	2.2	-	53.3	6.7	22.2
		45	18	2	2	1	8	1	9	1	-	24	3	10
		100.0	27.3	13.6	18.2	4.5	4.5	4.5	13.6	-	-	54.5	-	22.7
		22	6	3	4	1	1	1	3	-	-	12	-	5
		100.0	25.0	-	-	-	-	-	-	-	-	75.0	-	-
		4	1	-	-	-	-	-	-	-	-	3	-	-
		100.0	-	-	-	-	-	-	-	-	-	-	50.0	50.0
		2	-	-	-	-	-	-	-	-	-	-	1	1
19		100.0	33.3	4.8	4.8	-	23.8	-	9.5	4.8	-	52.4	4.8	23.8
		21	7	1	1	-	5	-	2	1	-	11	1	5
		100.0	18.2	4.5	13.6	9.1	9.1	4.5	18.2	-	-	59.1	4.5	27.3
		22	4	1	3	2	2	1	4	-	-	13	1	6
		100.0	54.5	9.1	9.1	-	-	-	27.3	-	-	54.5	-	9.1
		11	6	1	1	-	-	-	3	-	-	6	-	1
60		100.0	37.5	12.5	12.5	-	-	-	-	-	-	37.5	12.5	37.5
		8	3	1	1	-	-	-	-	-	-	3	1	3
80		100.0	50.0	25.0	-	-	25.0	25.0	25.0	-	-	50.0	-	-
		4	2	1	-	-	1	1	1	-	-	2	-	-
		100.0	42.9	-	-	-	14.3	-	28.6	-	-	57.1	14.3	14.3
		7	3	-	-	1	-	2	-	-	4	1	1	



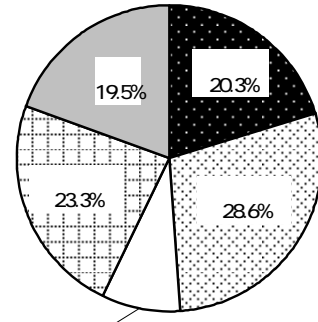

		30.1	
29.3			37.8
38.2			

	100.0	30.1	10.5	12.8	7.5	7.5	5.3	29.3	7.5	3.0	1.5	3.8	36.8
	133	40	14	17	10	10	7	39	10	4	2	5	49
	100.0	29.7	12.2	13.5	8.1	4.1	6.8	37.8	10.8	5.4	1.4	4.1	31.1
	74	22	9	10	6	3	5	28	8	4	1	3	23
	100.0	38.2	5.9	17.6	8.8	11.8	5.9	26.5	5.9	-	2.9	2.9	29.4
	34	13	2	6	3	4	2	9	2	-	1	1	10
	100.0	22.2	16.7	5.6	5.6	11.1	-	11.1	-	-	-	-	66.7
	18	4	3	1	1	2	-	2	-	-	-	-	12
	100.0	14.3	-	-	-	14.3	-	-	-	-	-	14.3	57.1
	7	1	-	-	-	1	-	-	-	-	-	1	4

33.1	38.3
40.59	50.0
35.0	38.1%
20.3	28.6
21.6	29.4
40.59	37.5
5.0%	26.8



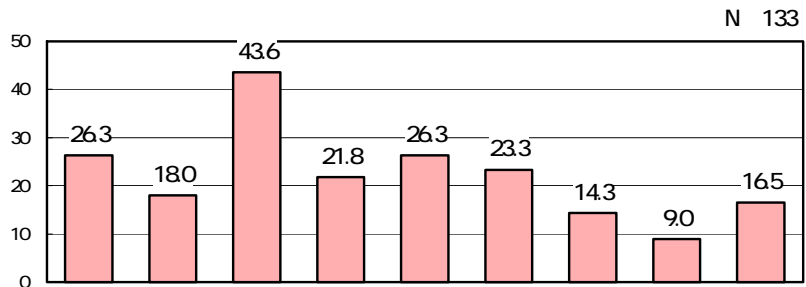
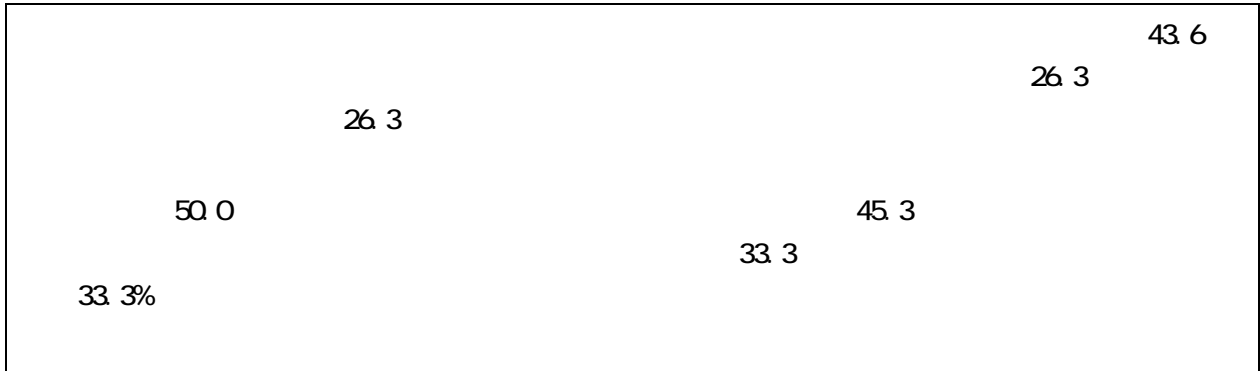
(N=133)



(N=133)

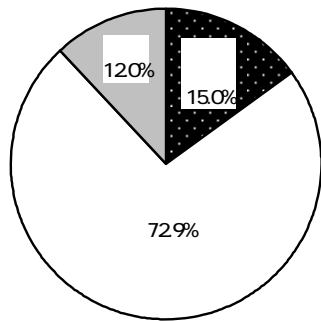
		100.0	33.1	38.3	9.0
		133	44	51	12
		100.0	36.5	32.4	10.8
		74	27	24	8
		100.0	32.4	47.1	8.8
		34	11	16	3
		100.0	22.2	38.9	5.6
	18	4	7	1	
	100.0	28.6	57.1	-	
	7	2	4	-	
19		100.0	28.9	40.0	8.9
		45	13	18	4
		100.0	42.9	40.0	5.7
	20 39	35	15	14	2
		100.0	50.0	37.5	6.3
		16	8	6	1
	100.0	25.0	41.7	16.7	
	12	3	5	2	
	100.0	22.2	55.6	11.1	
	9	2	5	1	
	100.0	18.8	18.8	12.5	
	16	3	3	2	
	100.0	35.0	50.0	15.0	
	20	7	10	3	
	100.0	38.1	38.1	9.3	
	97	37	37	9	
	100.0	-	25.0	-	
	16	-	4	-	

		100.0	20.3	28.6	8.3
		133	27	38	11
		100.0	21.6	23.0	8.1
		74	16	17	6
		100.0	29.4	29.4	11.8
		34	10	10	4
		100.0	5.6	50.0	5.6
		18	1	9	1
		100.0	-	28.6	-
		7	-	2	-
19		100.0	8.9	28.9	11.1
		45	4	13	5
		100.0	28.6	34.3	2.9
	20 39	35	10	12	1
		100.0	37.5	25.0	6.3
		16	6	4	1
	100.0	25.0	25.0	8.3	
	12	3	3	1	
	100.0	22.2	44.4	11.1	
	9	2	4	1	
	100.0	12.5	12.5	12.5	
	16	2	2	2	
	100.0	5.0	55.0	15.0	
	20	1	11	3	
	100.0	26.8	25.8	7.2	
	97	26	25	7	
	100.0	-	12.5	6.3	
	16	-	2	1	



		26.3	18.0	43.6	21.8	26.3	23.3	14.3	9.0	16.5
	100.0	26.3	18.0	43.6	21.8	26.3	23.3	14.3	9.0	16.5
	133	35	24	58	29	35	31	19	12	22
	100.0	50.0	16.7	41.7	16.7	25.0	25.0	16.7	16.7	8.3
	12	6	2	5	2	3	3	2	2	1
	100.0	33.3	13.3	33.3	6.7	13.3	6.7	13.3	13.3	20.0
	15	5	2	5	1	2	1	2	2	3
	100.0	22.6	18.9	45.3	24.5	28.3	25.5	14.2	7.5	17.0
	106	24	20	48	26	30	27	15	8	18
	100.0	23.0	17.6	50.0	20.3	21.6	24.3	13.5	4.1	17.6
	74	17	13	37	15	16	18	10	3	13
	100.0	32.4	23.5	35.3	20.6	32.4	23.5	14.7	11.8	8.8
	34	11	8	12	7	11	8	5	4	3
	100.0	27.8	16.7	33.3	27.8	33.3	27.8	11.1	27.8	22.2
	18	5	3	6	5	6	5	2	5	4
	100.0	28.6	-	42.9	28.6	28.6	-	28.6	-	28.6
	7	2	-	3	2	2	-	2	-	2

15.0	33.3	8.1
80	66.7%	



(N=133)

		100.0	15.0	72.9	12.0
		133	20	97	16
		100.0	8.1	81.1	10.8
		74	6	60	8
		100.0	17.6	73.5	8.8
		34	6	25	3
		100.0	33.3	50.0	16.7
		18	6	9	3
		100.0	28.6	42.9	28.6
		7	2	3	2
19		100.0	8.9	82.2	8.9
		45	4	37	4
20	39	100.0	11.4	80.0	8.6
		35	4	28	3
40	59	100.0	12.5	81.3	6.3
		16	2	13	1
60	79	100.0	16.7	83.3	-
		12	2	10	-
80		100.0	66.7	33.3	-
		9	6	3	-
		100.0	12.5	37.5	50.0
		16	2	6	8

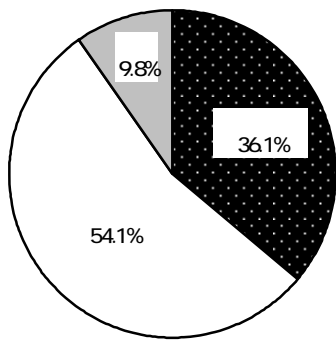
		100.0	15.0	72.9	12.0
		133	20	97	16
		100.0	27.3	63.6	9.1
		22	6	14	2
		100.0	16.7	78.3	5.0
		60	10	47	3
		100.0	11.4	85.7	2.9
		35	4	30	1
		100.0	-	37.5	62.5
		16	-	6	10
		100.0	17.6	76.5	5.9
		34	6	26	2
		100.0	18.4	77.6	4.1
		49	9	38	2
		100.0	12.5	84.4	3.1
		32	4	27	1
		100.0	5.6	33.3	61.1
		18	1	6	11
		100.0	23.1	76.9	-
		13	3	10	-
		100.0	22.4	75.5	2.0
		49	11	37	1
		100.0	11.3	83.0	5.7
		53	6	44	3
		100.0	-	33.3	66.7
		18	-	6	12
		100.0	44.4	55.6	-
		18	8	10	-
		100.0	15.6	81.3	3.1
		32	5	26	1
		100.0	10.4	83.6	6.0
		67	7	56	4
		100.0	-	31.3	68.8
		16	-	5	11
		100.0	35.7	64.3	-
		14	5	9	-
		100.0	23.3	73.3	3.3
		30	7	22	1
		100.0	9.9	85.9	4.2
		71	7	61	3
		100.0	5.6	27.8	66.7
		18	1	5	12

---

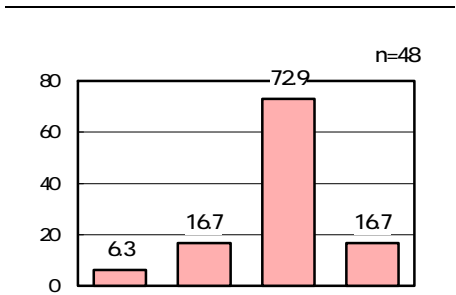
---

PR

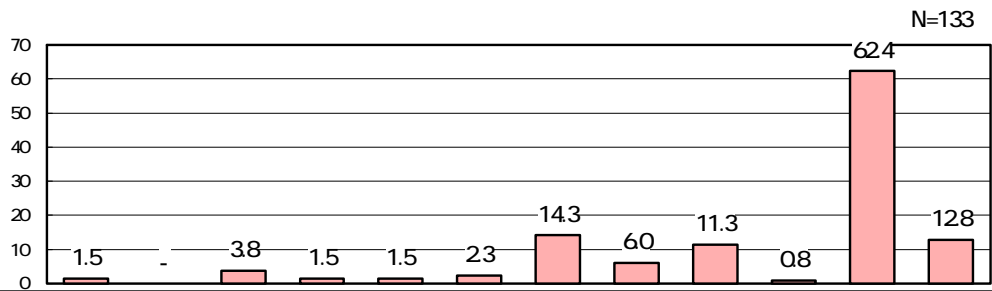
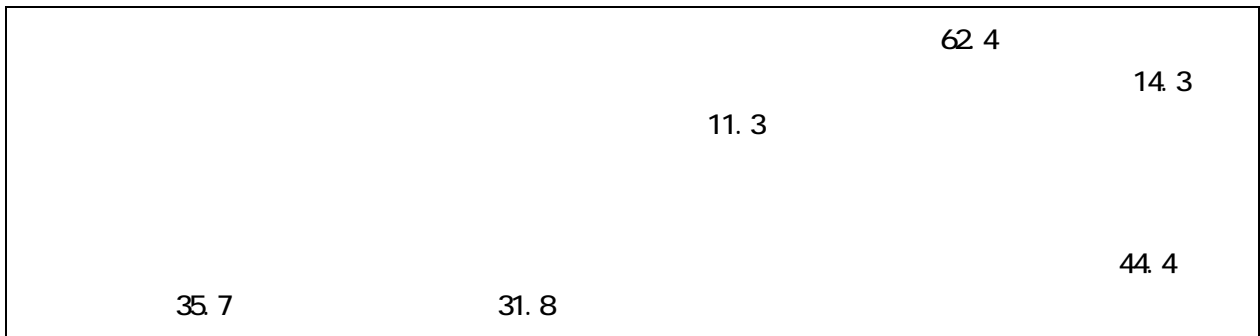
	36.1		32.1
	66.7		87.5
41.2		40.59	
	72.9	7	



(N=133)



		100.0 133	36.1 48	54.1 72	9.8 13
		100.0 12	66.7 8	25.0 3	8.3 1
		100.0 15	40.0 6	46.7 7	13.3 2
		100.0 106	32.1 34	58.5 62	9.4 10
		100.0 74	37.8 28	52.7 39	9.5 7
		100.0 34	41.2 14	52.9 18	5.9 2
		100.0 18	27.8 5	55.6 10	16.7 3
		100.0 7	14.3 1	71.4 5	14.3 1
	19	100.0 45	24.4 11	71.1 32	4.4 2
	20 39	100.0 35	34.3 12	60.0 21	5.7 2
	40 59	100.0 16	87.5 14	12.5 2	- -
	60 79	100.0 12	50.0 6	41.7 5	8.3 1
	80	100.0 9	44.4 4	55.6 5	- -
		100.0 16	6.3 1	43.8 7	50.0 8

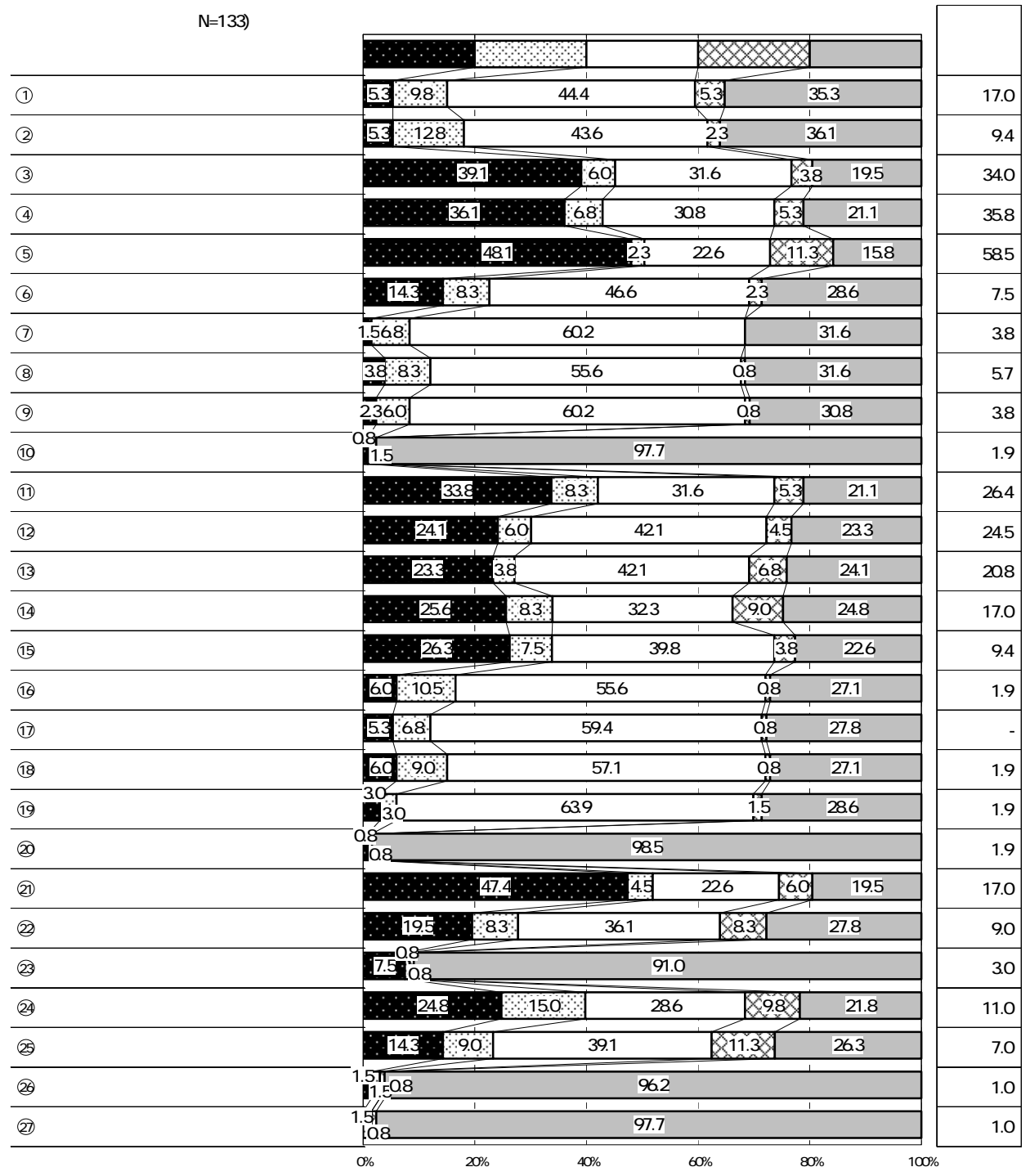


		100.0	1.5	-	3.8	1.5	1.5	2.3	14.3	6.0	11.3	0.8	62.4	12.8
		133	2	-	5	2	2	3	19	8	15	1	83	17
		100.0	1.4	-	2.7	2.7	1.4	4.1	10.8	4.1	9.5	1.4	67.6	10.8
		74	1	-	2	2	1	3	8	3	7	1	50	8
		100.0	2.9	-	2.9	-	-	-	11.8	11.8	8.8	-	61.8	14.7
		34	1	-	1	-	-	-	4	4	3	-	21	5
		100.0	-	-	11.1	-	5.6	-	27.8	5.6	22.2	-	50.0	11.1
		18	-	-	2	-	1	-	5	1	4	-	9	2
		100.0	-	-	-	-	-	-	28.6	-	14.3	-	42.9	28.6
		7	-	-	-	-	-	-	2	-	1	-	3	2



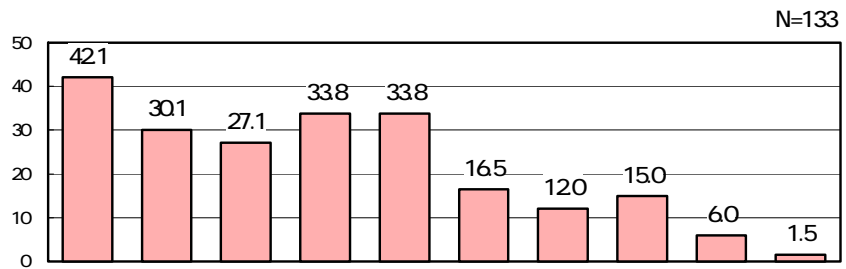
		100.0	1.5	-	3.8	1.5	1.5	2.3	14.3	6.0	11.3	0.8	62.4	12.8
		133	2	-	5	2	2	3	19	8	15	1	83	17
		100.0	-	-	9.1	4.5	9.1	-	31.8	13.6	18.2	-	54.5	-
		22	-	-	2	1	2	-	7	3	4	-	12	-
		100.0	-	-	5.0	-	-	3.3	11.7	5.0	13.3	-	65.0	8.3
		60	-	-	3	-	-	2	7	3	8	-	39	5
		100	6	-	-	3	-	3	14	6	9	3	71	9
		35	2	-	-	1	-	1	5	2	3	1	25	3
		100.0	-	-	-	-	-	-	-	-	-	-	43.8	56.3
		16	-	-	-	-	-	-	-	-	-	-	7	9
		100.0	-	-	8.8	2.9	5.9	-	17.6	8.8	11.8	-	70.6	-
		34	-	-	3	1	2	-	6	3	4	-	24	-
		100.0	-	-	4.1	-	-	2.0	16.3	6.1	12.2	-	67.3	6.1
		49	-	-	2	-	-	1	8	3	6	-	33	3
		100	3	-	-	3	-	6	13	6	16	3	59	13
		32	1	-	-	1	-	2	4	2	5	1	19	4
		100.0	5.6	-	-	-	-	-	5.6	-	-	-	38.9	55.6
		18	1	-	-	-	-	-	1	-	-	-	7	10
		100.0	-	-	23.1	-	15.4	-	23.1	15.4	23.1	-	53.8	-
		13	-	-	3	-	2	-	3	2	3	-	7	-
		100.0	-	-	4.1	2.0	-	4.1	20.4	6.1	14.3	-	63.3	4.1
		49	-	-	2	1	-	2	10	3	7	-	31	2
		100	4	-	-	2	-	2	9	6	9	2	72	9
		53	2	-	-	1	-	1	5	3	5	1	38	5
		100.0	-	-	-	-	-	-	5.6	-	-	-	38.9	55.6
		18	-	-	-	-	-	-	1	-	-	-	7	10
		100.0	-	-	16.7	-	11.1	-	44.4	16.7	27.8	-	44.4	-
		18	-	-	3	-	2	-	8	3	5	-	8	-
		100.0	-	-	3.1	3.1	-	-	12.5	6.3	9.4	-	75.0	3.1
		32	-	-	1	1	-	-	4	2	3	-	24	1
		100	3	-	2	2	-	5	10	5	10	2	67	9
		67	2	-	1	1	-	3	7	3	7	1	45	6
		100.0	-	-	-	-	-	-	-	-	-	-	37.5	62.5
		16	-	-	-	-	-	-	-	-	-	-	6	10
		100.0	-	-	14.3	-	14.3	-	35.7	21.4	28.6	-	50.0	-
		14	-	-	2	-	2	-	5	3	4	-	7	-
		100.0	-	-	3.3	3.3	-	-	20.0	6.7	13.3	-	66.7	3.3
		30	-	-	1	1	-	-	6	2	4	-	20	1
		100	3	-	1	1	-	4	9	4	10	1	70	9
		71	2	-	1	1	-	3	6	3	7	1	50	6
		100.0	-	-	5.6	-	-	-	11.1	-	-	-	33.3	55.6
		18	-	-	1	-	-	-	2	-	-	-	6	10


47.4	48.1	21
	39.1	



	100.0	60.9	39.1	49.6	50.4
	133	81	52	66	67
	100.0	81.8	18.2	86.4	13.6
	22	18	4	19	3
	100.0	68.3	31.7	58.3	41.7
	60	41	19	35	25
	100.0	51.4	48.6	28.6	71.4
	35	18	17	10	25
	100.0	25.0	75.0	12.5	87.5
	16	4	12	2	14
	100.0	79.4	20.6	73.5	26.5
	34	27	7	25	9
	100.0	63.3	36.7	57.1	42.9
	49	31	18	28	21
	100.0	56.3	43.8	31.3	68.8
	32	18	14	10	22
	100.0	27.8	72.2	16.7	83.3
	18	5	13	3	15
	100.0	84.6	15.4	84.6	15.4
	13	11	2	11	2
	100.0	73.5	26.5	71.4	28.6
	49	36	13	35	14
	100.0	56.6	43.4	32.1	67.9
	53	30	23	17	36
	100.0	22.2	77.8	16.7	83.3
	18	4	14	3	15
	100.0	83.3	16.7	88.9	11.1
	18	15	3	16	2
	100.0	71.9	28.1	62.5	37.5
	32	23	9	20	12
	100.0	59.7	40.3	41.8	58.2
	67	40	27	28	39
	100.0	18.8	81.3	12.5	87.5
	16	3	13	2	14
	100.0	78.6	21.4	85.7	14.3
	14	11	3	12	2
	100.0	76.7	23.3	70.0	30.0
	30	23	7	21	9
	100.0	59.2	40.8	40.8	59.2
	71	42	29	29	42
	100.0	27.8	72.2	22.2	77.8
	18	5	13	4	14

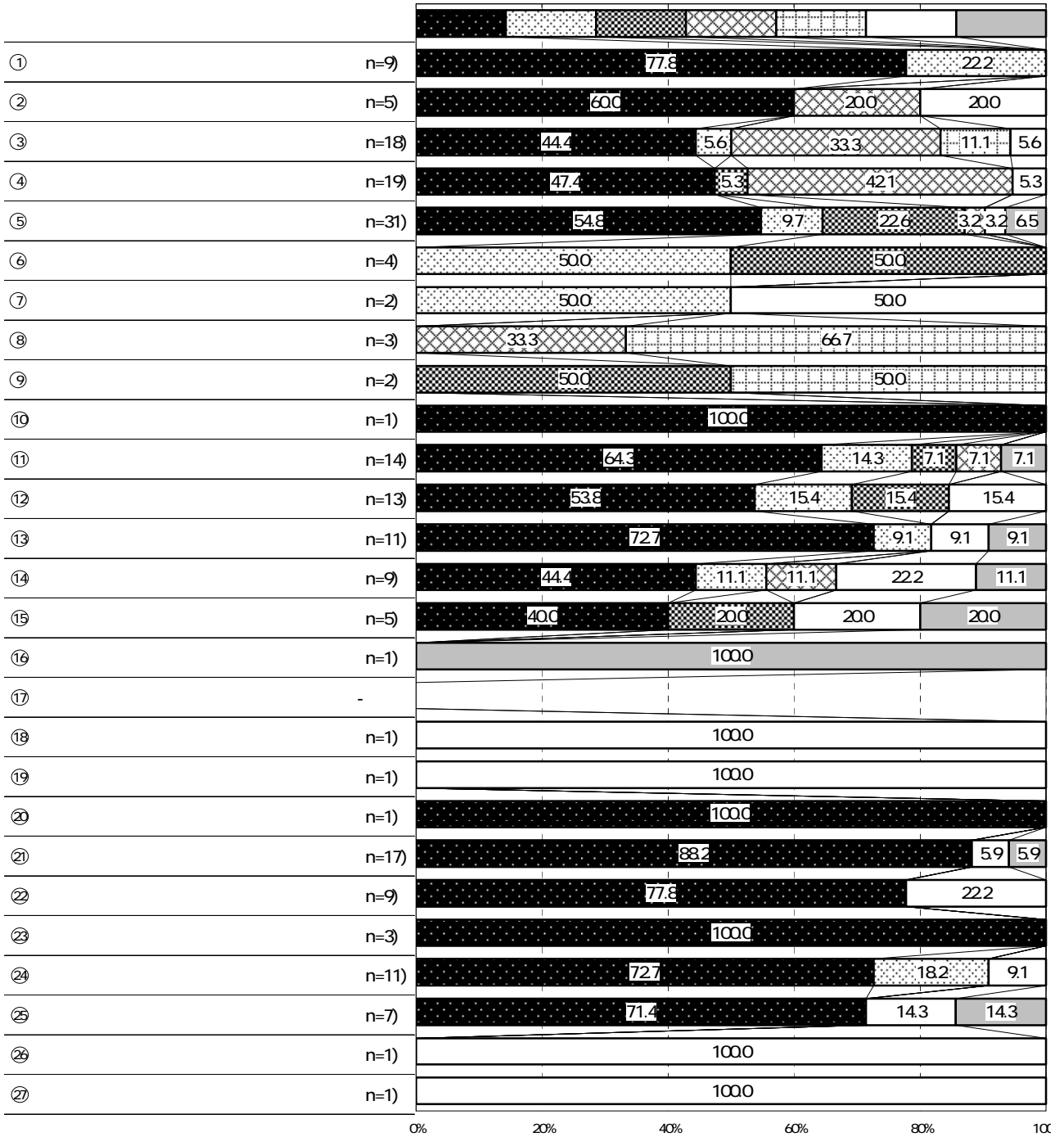
42.1	33.8
30.1	33.8
80	58.3
	100.0



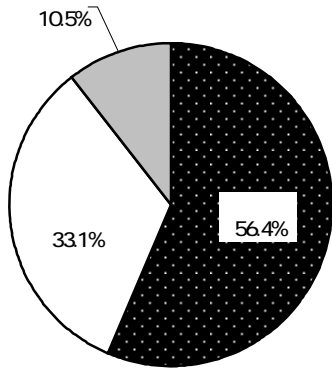
		100.0	42.1	30.1	27.1	33.8	33.8	16.5	12.0	15.0	6.0	1.5	
		133	56	40	36	45	45	22	16	20	8	2	
		100.0	58.3	41.7	33.3	41.7	50.0	25.0	25.0	25.0	8.3	-	
		12	7	5	4	5	6	3	3	3	1	-	
		100.0	40.0	40.0	20.0	33.3	33.3	20.0	13.3	20.0	13.3	-	
		15	6	6	3	5	5	3	2	3	2	-	
		100.0	40.6	27.4	27.4	33.0	32.1	15.1	10.4	13.2	4.7	1.9	
		106	43	29	29	35	34	16	11	14	5	2	
		100.0	35.1	25.7	14.9	23.0	18.9	9.5	5.4	6.8	9.5	1.4	
		74	26	19	11	17	14	7	4	5	7	1	
		100.0	44.1	29.4	32.4	44.1	47.1	11.8	14.7	23.5	2.9	-	
		34	15	10	11	15	16	4	5	8	1	-	
		100.0	66.7	50.0	55.6	61.1	66.7	44.4	27.8	27.8	-	5.6	
		18	12	9	10	11	12	8	5	5	-	1	
		100.0	42.9	28.6	57.1	28.6	42.9	42.9	28.6	28.6	-	-	
		7	3	2	4	2	3	3	2	2	-	-	
	19	100.0	31.1	24.4	15.6	13.3	15.6	8.9	6.7	6.7	6.7	2.2	
	45	14	11	7	6	7	4	3	3	3	3	1	
	20	39	100.0	45.7	22.9	25.7	34.3	28.6	5.7	8.6	14.3	2.9	2.9
	35	16	8	9	12	10	2	3	5	1	1	-	
	40	59	100.0	43.8	31.3	31.3	50.0	50.0	31.3	12.5	12.5	12.5	-
	16	7	5	5	8	8	5	2	2	2	2	-	
	60	79	100.0	58.3	58.3	41.7	66.7	75.0	25.0	25.0	33.3	8.3	-
	12	7	7	5	8	9	3	3	4	1	-	-	
	80		100.0	100.0	77.8	77.8	100.0	100.0	66.7	44.4	55.6	11.1	-
	9	9	7	7	9	9	6	4	5	1	-	-	
		100.0	18.8	12.5	18.8	12.5	12.5	12.5	6.3	6.3	-	-	
		16	3	2	3	2	2	2	1	1	-	-	

33 3 42 1

N=133)



56.4	48.6
70.6	48.6

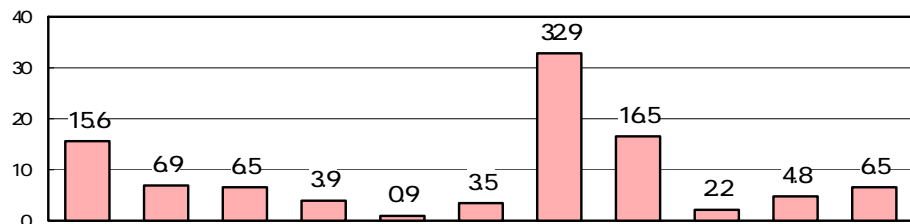


(N=133)

		100.0	56.4	33.1	10.5
		133	75	44	14
		100.0	48.6	40.5	10.8
		74	36	30	8
		100.0	70.6	20.6	8.8
		34	24	7	3
		100.0	61.1	27.8	11.1
		18	11	5	2
		100.0	57.1	28.6	14.3
		7	4	2	1
	19	100.0	31.1	60.0	8.9
		45	14	27	4
	20	100.0	71.4	22.9	5.7
	39	35	25	8	2
	40	100.0	81.3	18.8	-
	59	16	13	3	-
	60	100.0	100.0	-	-
79	12	12	-	-	
	80	100.0	100.0	-	-
		9	9	-	-
		100.0	12.5	37.5	50.0
		16	2	6	8

32 9	2	16 5
	15 6	
		71. 4
58 3	60 0	

N=231



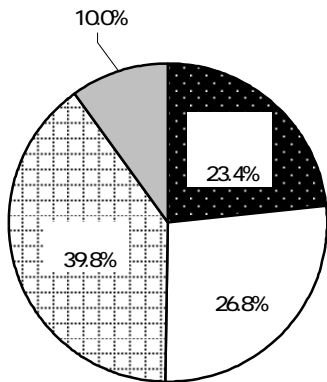
	100.0	15.6	6.9	6.5	3.9	0.9	3.5	32.9	16.5	2.2	4.8	6.5
	231	36	16	15	9	2	8	76	38	5	11	15
	100.0	18.3	12.7	12.7	2.8	1.4	5.6	29.6	12.7	-	2.8	1.4
	71	13	9	9	2	1	4	21	9	-	2	1
	100.0	21.9	9.6	2.7	5.5	1.4	4.1	21.9	13.7	5.5	6.8	6.8
	73	16	7	2	4	1	3	16	10	4	5	5
	100.0	11.1	-	-	-	-	-	33.3	33.3	11.1	11.1	-
	9	1	-	-	-	-	-	3	3	1	1	-
	100.0	-	-	-	-	-	-	71.4	14.3	-	-	14.3
	7	-	-	-	-	-	-	5	1	-	-	1
	100.0	-	-	-	-	-	-	60.0	30.0	-	-	10.0
	10	-	-	-	-	-	-	6	3	-	-	1
	100.0	12.5	-	12.5	-	-	-	25.0	-	-	-	50.0
	8	1	-	1	-	-	-	2	-	-	-	4
	100.0	5.0	-	-	-	-	-	60.0	35.0	-	-	-
	20	1	-	-	-	-	-	12	7	-	-	-
	100.0	-	-	15.8	-	-	-	42.1	10.5	-	15.8	15.8
	19	-	-	3	-	-	-	8	2	-	3	3
	100.0	28.6	-	-	21.4	-	7.1	21.4	21.4	-	-	-
	14	4	-	-	3	-	1	3	3	-	-	-
	100.0	17.3	11.2	10.2	5.1	-	6.1	21.4	15.3	5.1	6.1	2.0
	98	17	11	10	5	-	6	21	15	5	6	2
	100.0	16.9	8.5	3.4	5.1	3.4	3.4	37.3	10.2	-	1.7	10.2
	59	10	5	2	3	2	2	22	6	-	1	6
	100.0	14.5	-	4.8	1.6	-	-	41.9	21.0	-	6.5	9.7
	62	9	-	3	1	-	-	26	13	-	4	6
	100.0	-	-	-	-	-	-	58.3	33.3	-	-	8.3
	12	-	-	-	-	-	-	7	4	-	-	1





8		2	12		7
		2		6	
		1		3	
		1		3	
		1		2	
		1		2	
		1		2	
		1		1	
		1		1	
		1		1	
		1		1	
		1		1	
		1		1	
		1		1	
		1		1	
		1		1	
		1		1	
		1		1	
		1		1	
		1		1	
	9			1	11 12
		1	12 1	1	
		1	4 11 1	1	
		1	4 9	1	
		1	5 3	1	
		1	5 7	1	
		1	7 8	1	
		1		1	
		1		1	
10		3	7 9	1	
		2	7 1 3	1	
		1	7 8	1	
		1			
		1			
		1			
		1			
		1			
		1			
		1			
		1			
		1			
11		3			
		1			
		1			
		1			
		1			
		1			
		1			
		1			
		1			
		1			

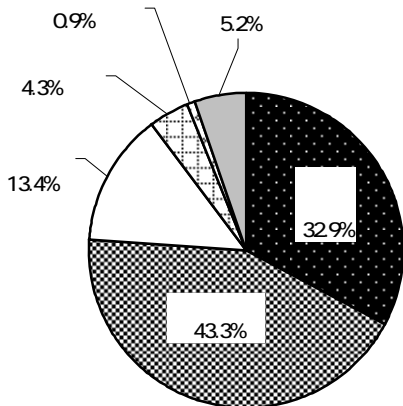
23.4	39.8	26.8
	59.3	83.3
	32.7	



(N=231)

		100.0	23.4	26.8	39.8	100.0
		231	54	62	92	23
		100.0	22.9	41.7	31.3	4.2
		48	11	20	15	2
		100.0	7.4	11.1	59.3	22.2
		27	2	3	16	6
		100.0	26.3	25.0	39.1	9.6
		156	41	39	61	15
		100.0	31.6	32.7	28.6	7.1
		98	31	32	28	7
		100.0	30.5	28.8	28.8	11.9
		59	18	17	17	7
		100.0	8.1	21.0	59.7	11.3
		62	5	13	37	7
		100.0	-	-	83.3	16.7
		12	-	-	10	2

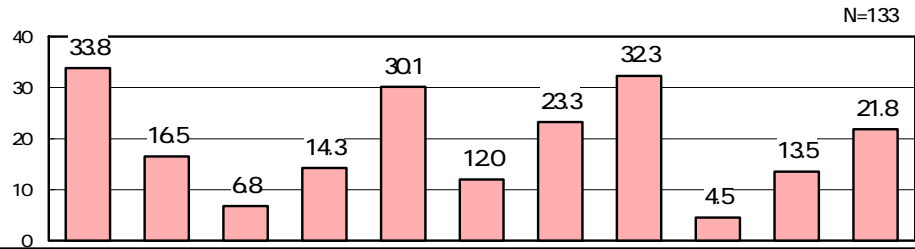
76.2	32.9	43.3
100.0	60	79
	85.7	



(N=231)

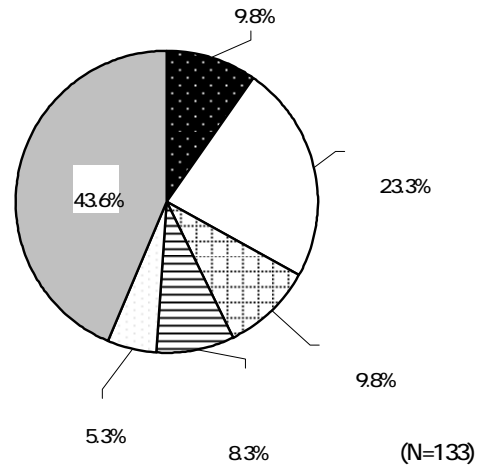
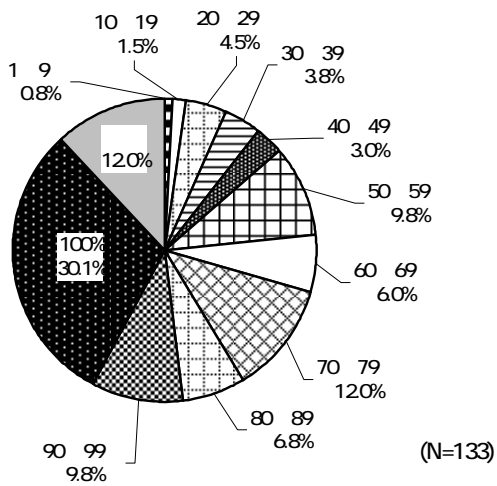
		100.0	32.9	43.3	13.4	4.3	0.9
		231	76	100	31	10	2
		100.0	23.5	48.0	22.4	4.1	-
		98	23	47	22	4	-
		100.0	37.3	37.3	13.6	3.4	1.7
		59	22	22	8	2	1
		100.0	45.2	35.5	1.6	6.5	1.6
		62	28	22	1	4	1
		100.0	25.0	75.0	-	-	-
		12	3	9	-	-	-
	19	100.0	28.6	42.9	21.4	-	3.6
		28	8	12	6	-	1
	20	39	100.0	17.0	56.6	13.2	7.5
		53	9	30	7	4	1.9
	40	59	100.0	30.4	45.7	13.0	4.3
		46	14	21	6	2	-
60	79	100.0	40.8	44.9	14.3	-	
	49	20	22	7	-	-	
80		100.0	44.9	24.5	10.2	8.2	-
	49	22	12	5	4	-	
		100.0	50.0	50.0	-	-	-
		6	3	3	-	-	-

32 3	30 1	33 8
------	------	------



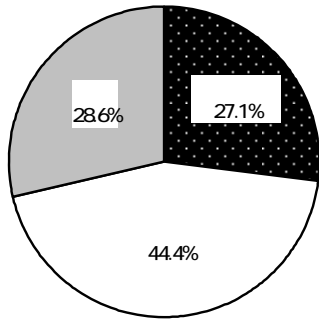
	100.0	33.8	16.5	6.8	14.3	30.1	12.0	23.3	32.3	4.5	13.5	21.8	
	133	45	22	9	19	40	16	31	43	6	18	29	
1	100.0	50.0	33.3	-	8.3	33.3	16.7	41.7	50.0	-	16.7	25.0	
	12	6	4	-	1	4	2	5	6	-	2	3	
	100.0	6.7	13.3	13.3	-	26.7	6.7	20.0	20.0	-	40.0	20.0	
	15	1	2	2	-	4	1	3	3	-	6	3	
2	100.0	35.8	15.1	6.6	17.0	30.2	12.3	21.7	32.1	5.7	9.4	21.7	
	106	38	16	7	18	32	13	23	34	6	10	23	
	100.0	36.5	12.2	6.8	17.6	27.0	8.1	21.6	33.8	4.1	10.8	25.7	
	74	27	9	5	13	20	6	16	25	3	8	19	
3	100.0	44.1	23.5	5.9	14.7	35.3	17.6	26.5	44.1	5.9	5.9	17.6	
	34	15	8	2	5	12	6	9	15	2	2	6	
	100.0	5.6	22.2	5.6	-	33.3	5.6	22.2	11.1	5.6	33.3	16.7	
	18	1	4	1	-	6	1	4	2	1	6	3	
4	100.0	28.6	14.3	14.3	14.3	28.6	42.9	28.6	14.3	-	28.6	14.3	
	7	2	1	1	1	2	3	2	1	-	2	1	


90		100	30.1	90	99	9.8	
	39.9		50				13.6
					23.3		
	9.8			9.8			
	8.3						
				25.0			
	28.3						
						29.7	
23.5			22.2				



	1000	9.8	23.3	9.8	8.3	5.3	43.6
	133	13	31	13	11	7	58
	1000	25.0	8.3	16.7	8.3	8.3	33.3
	12	3	1	2	1	1	4
	1000	13.3	-	6.7	13.3	6.7	60.0
	15	2	-	1	2	1	9
	1000	7.5	28.3	9.4	7.5	4.7	42.5
	106	8	30	10	8	5	45
	1000	8.1	29.7	10.8	4.1	5.4	41.9
	74	6	22	8	3	4	31
	1000	14.7	23.5	11.8	8.8	2.9	38.2
	34	5	8	4	3	1	13
	1000	5.6	-	5.6	22.2	11.1	55.6
	18	1	-	1	4	2	10
	1000	14.3	14.3	-	14.3	-	57.1
	7	1	1	-	1	-	4


					27.1		
				41.2		60	79
58.3	40	59	56.3				
					51.4		19
	62.2						

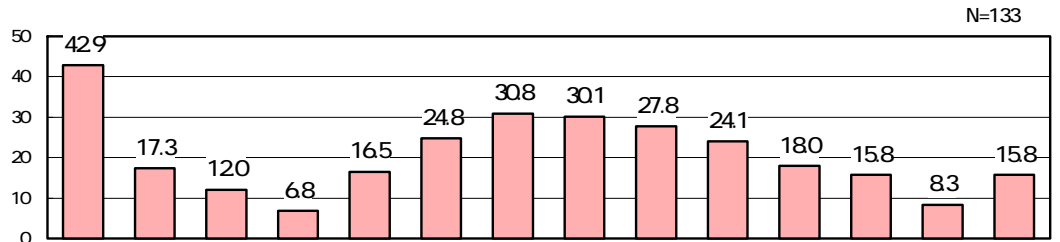


(N=133)

					100.0	27.1	44.4	28.6
					133	36	59	38
					100.0	21.6	51.4	27.0
					74	16	38	20
					100.0	41.2	29.4	29.4
					34	14	10	10
					100.0	27.8	44.4	27.8
					18	5	8	5
					100.0	14.3	42.9	42.9
					7	1	3	3
	19				100.0	4.4	62.2	33.3
					45	2	28	15
	20	39			100.0	37.1	40.0	22.9
					35	13	14	8
	40	59			100.0	56.3	25.0	18.8
					16	9	4	3
	60	79			100.0	58.3	25.0	16.7
					12	7	3	2
	80				100.0	44.4	44.4	11.1
					9	4	4	1
					100.0	6.3	37.5	56.3
					16	1	6	9



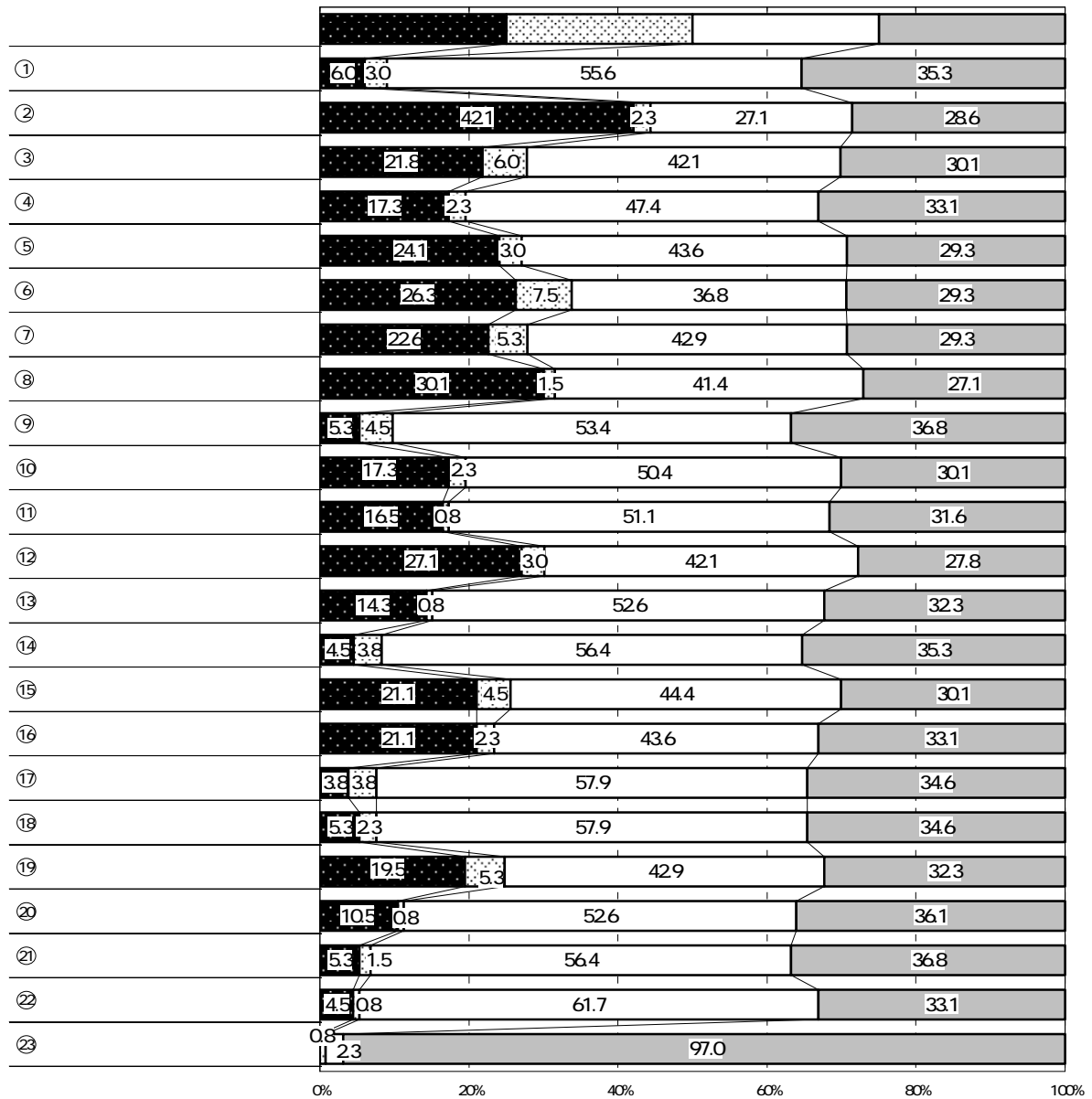
																			42 9	( 30 8 )	( 30 1 )		
																			47. 2				
																			43 2				
																			61. 8				
																				60 79	75 0 )	20	39
																				19			
60 0 )	40	59			50 0																		
	37. 8																						



		N=133														
		100.0 133	42.9 57	17.3 23	12.0 16	6.8 9	16.5 22	24.8 33	30.8 41	30.1 40	27.8 37	24.1 32	18.0 24	15.8 21	8.3 11	15.8 21
		100.0 12	41.7 5	8.3 1	8.3 1	8.3 1	25.0 3	41.7 5	33.3 4	33.3 4	33.3 4	8.3 1	33.3 4	-	-	25.0 3
		100.0 15	13.3 2	6.7 1	20.0 3	-	6.7 1	6.7 1	20.0 3	20.0 3	26.7 4	46.7 7	26.7 4	-	6.7 1	13.3 2
		100.0 106	47.2 50	19.8 21	11.3 12	7.5 8	17.0 18	25.5 27	32.1 34	31.1 33	27.4 29	22.6 24	15.1 16	19.8 21	9.4 10	15.1 16
		100.0 74	43.2 32	21.6 16	12.2 9	8.1 6	18.9 14	31.1 23	31.1 23	41.9 31	33.8 25	29.7 22	18.9 14	21.6 16	5.4 4	9.5 7
		100.0 34	61.8 21	14.7 5	17.6 6	2.9 1	14.7 5	23.5 8	41.2 14	20.6 7	29.4 10	23.5 8	23.5 8	11.8 4	11.8 4	8.8 3
		100.0 18	22.2 4	11.1 2	5.6 1	5.6 1	11.1 2	11.1 2	22.2 4	5.6 1	-	5.6 1	11.1 2	-	16.7 3	44.4 8
		100.0 7	-	-	-	14.3 1	14.3 1	-	-	14.3 1	28.6 2	14.3 1	-	14.3 1	-	42.9 3
		100.0 45	28.9 13	22.2 10	6.7 3	8.9 4	13.3 6	24.4 11	22.2 10	28.9 13	37.8 17	31.1 14	13.3 6	15.6 7	13.3 6	8.9 4
19		100.0 35	60.0 21	28.6 10	17.1 6	2.9 1	17.1 6	28.6 10	40.0 14	31.4 11	28.6 10	20.0 7	22.9 8	20.0 7	11.4 4	14.3 5
20	39	100.0 16	50.0 8	12.5 2	12.5 2	6.3 1	31.3 5	25.0 4	43.8 7	37.5 6	25.0 4	31.3 5	37.5 6	25.0 4	-	6.3 1
40	59	100.0 12	75.0 9	-	16.7 2	-	33.3 4	33.3 4	25.0 3	41.7 5	25.0 3	25.0 3	25.0 3	-	-	-
60	79	100.0 9	22.2 2	-	11.1 1	11.1 1	-	22.2 2	22.2 2	22.2 2	-	11.1 1	11.1 1	11.1 1	11.1 1	33.3 3
80		100.0 16	25.0 4	6.3 1	12.5 2	12.5 2	6.3 1	12.5 2	31.3 5	18.8 3	18.8 3	12.5 2	-	12.5 2	-	50.0 8

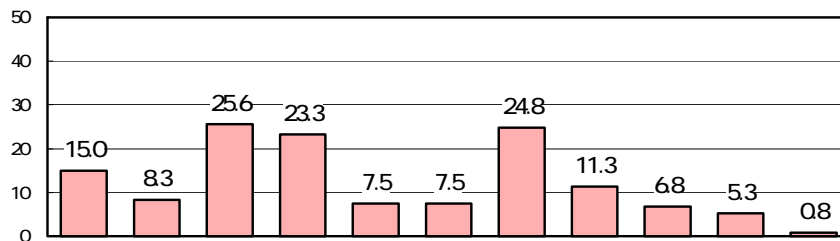

		42.1		30.1
27.1			26.3	
				24.1
		57.9		22
	56.4		21	57.9
				7.5
6.0		5.3		5.3

N=133)



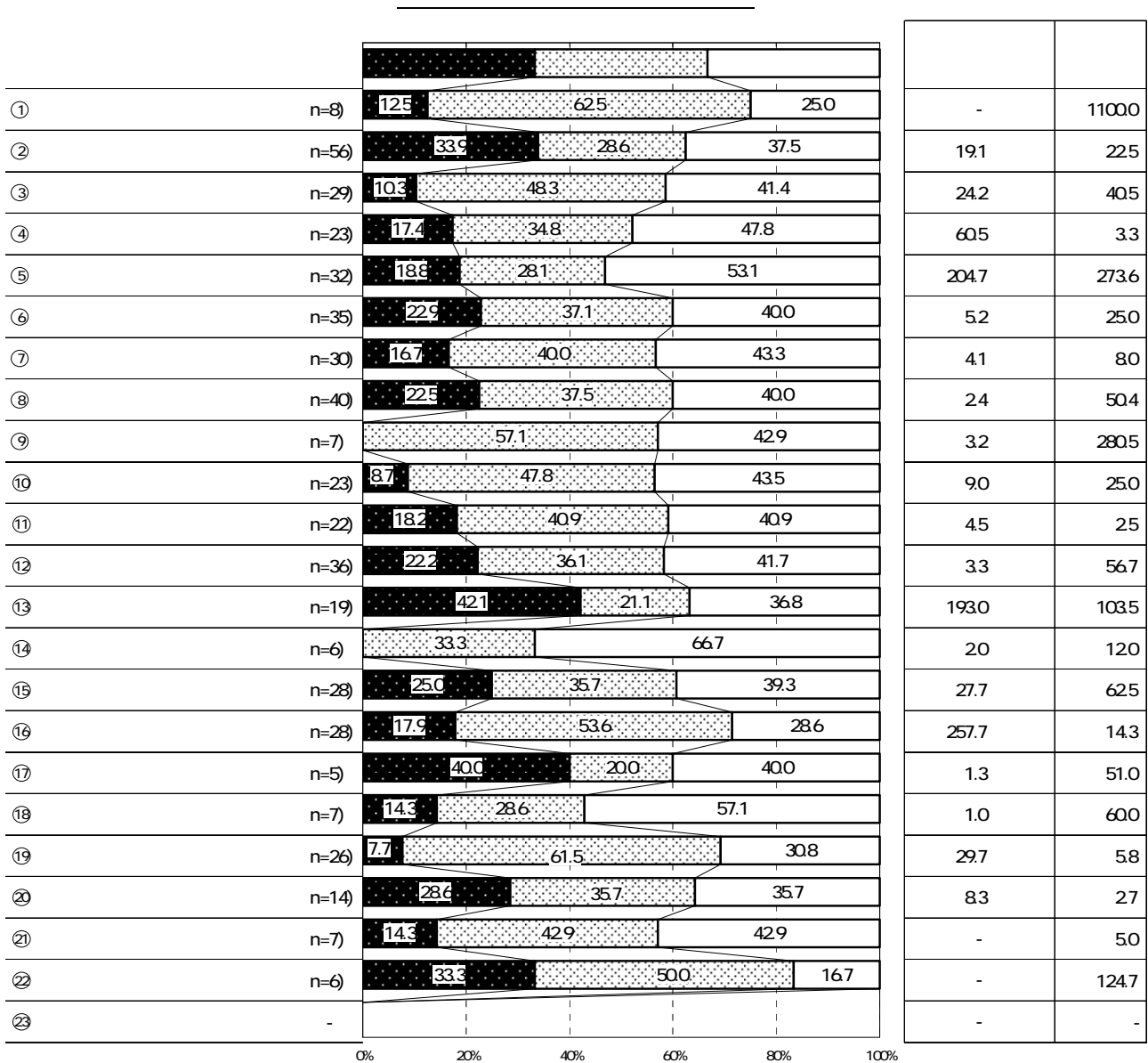


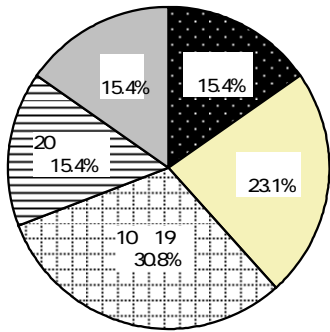
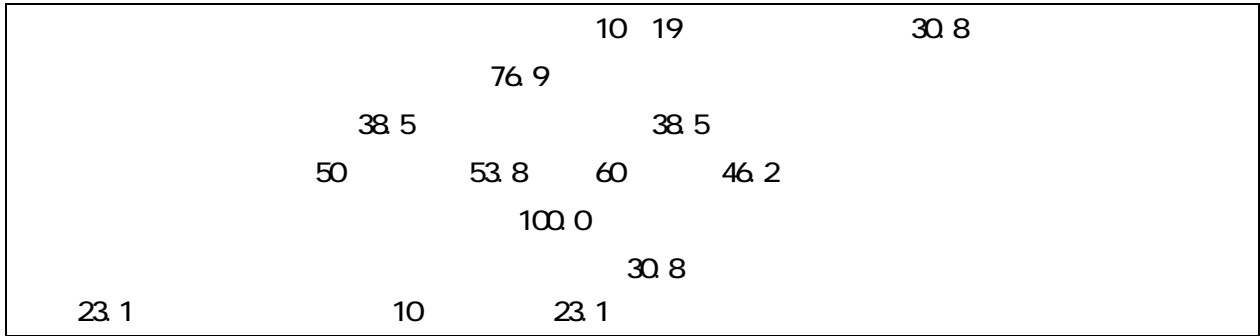




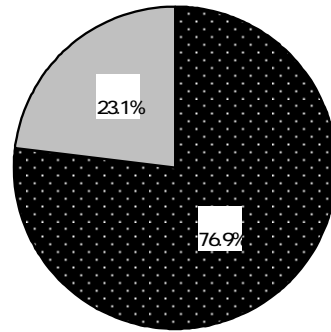
		13	14	15	16	17	18	19	20	21	22	23	
		100.0	15.0	8.3	25.6	23.3	7.5	7.5	24.8	11.3	6.8	5.3	0.8
		133	20	11	34	31	10	10	33	15	9	7	1
		100.0	50.0	16.7	25.0	58.3	33.3	16.7	33.3	16.7	16.7	25.0	-
		12	6	2	3	7	4	2	4	2	2	3	-
		100.0	26.7	13.3	40.0	26.7	13.3	13.3	13.3	13.3	13.3	13.3	-
		15	4	2	6	4	2	2	2	2	2	2	-
		100.0	9.4	6.6	23.6	18.9	3.8	5.7	25.5	10.4	4.7	1.9	0.9
		106	10	7	25	20	4	6	27	11	5	2	1
		100.0	13.5	5.4	16.2	18.9	8.1	6.8	25.7	13.5	8.1	5.4	1.4
		74	10	4	12	14	6	5	19	10	6	4	1
		100.0	17.6	5.9	26.5	20.6	5.9	2.9	26.5	5.9	5.9	2.9	-
		34	6	2	9	7	2	1	9	2	2	1	-
		100.0	22.2	22.2	66.7	50.0	11.1	22.2	16.7	11.1	-	11.1	-
		18	4	4	12	9	2	4	3	2	-	2	-
		100.0	-	14.3	14.3	14.3	-	-	28.6	14.3	14.3	-	-
		7	-	1	1	1	-	-	2	1	1	-	-
19		100.0	26.7	6.7	24.4	17.8	4.4	4.4	13.3	8.9	6.7	6.7	-
		45	12	3	11	8	2	2	6	4	3	3	-
		100.0	2.9	8.6	28.6	17.1	8.6	8.6	31.4	8.6	5.7	-	2.9
		35	1	3	10	6	3	3	11	3	2	-	1
		100.0	18.8	-	12.5	37.5	-	-	31.3	18.8	-	6.3	-
		16	3	-	2	6	-	-	5	3	-	1	-
40	59	100.0	8.3	8.3	16.7	33.3	16.7	-	33.3	8.3	-	8.3	-
		12	1	1	2	4	2	-	4	1	-	1	-
60	79	100.0	22.2	44.4	55.6	55.6	11.1	33.3	44.4	22.2	22.2	22.2	-
		9	2	4	5	5	1	3	4	2	2	2	-
80		100.0	6.3	-	25.0	12.5	12.5	12.5	18.8	12.5	12.5	-	-
		16	1	-	4	2	2	2	3	2	2	-	-

				42.1
	40.0		33.9	
			61.5	
				62.5
		204.7		60.5
			280.5	
	273.6	(103.5 )		
		257.7m		193.0m

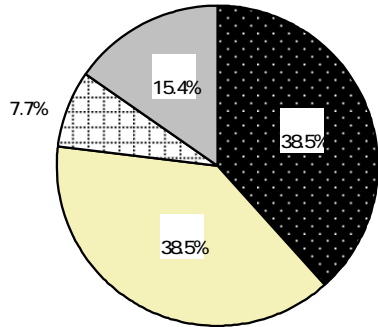




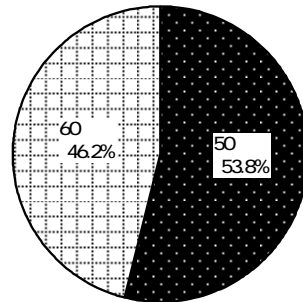
11.9  
(N=13)



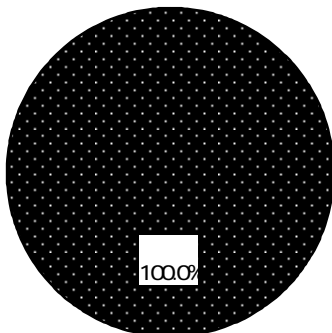
20  
(N=13)



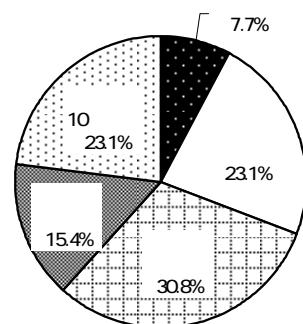
1.6  
(N=13)



(N=13)

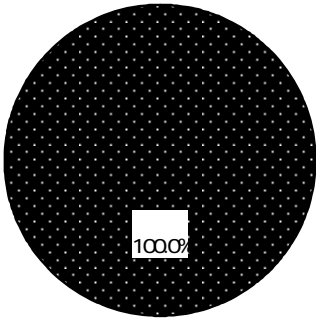


20  
(N=13)

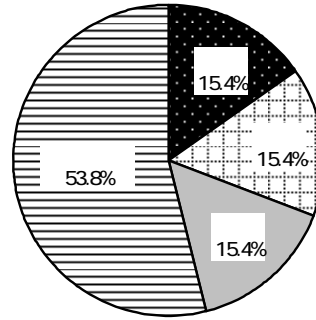


(N=13)

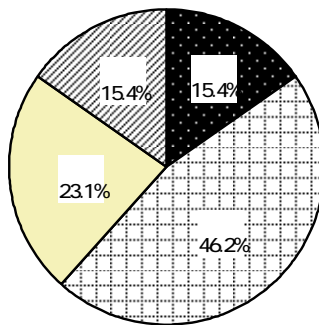
100.0	53.8
46.2	



1.0  
(N=13)

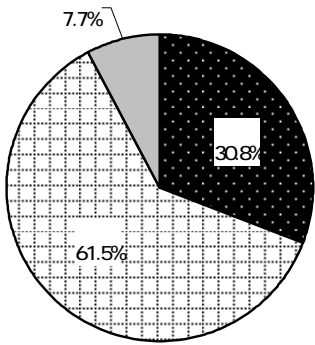


5.3  
(N=13)

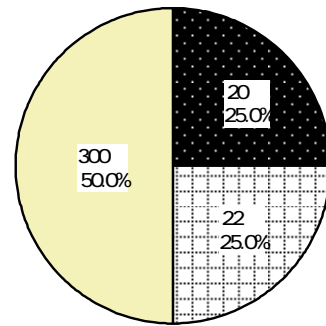


(N=13)

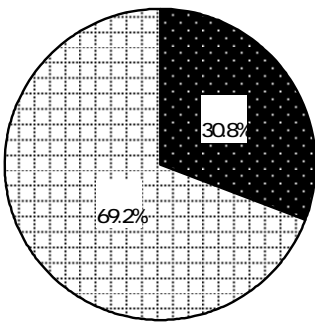
		30 8
300	50 0	
	30 8	
		50 0



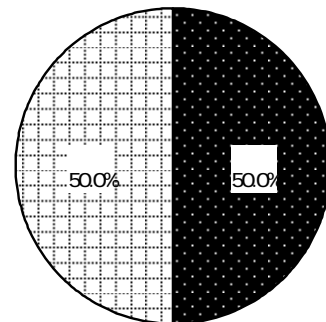
(N=13)



1605  
(n=4)

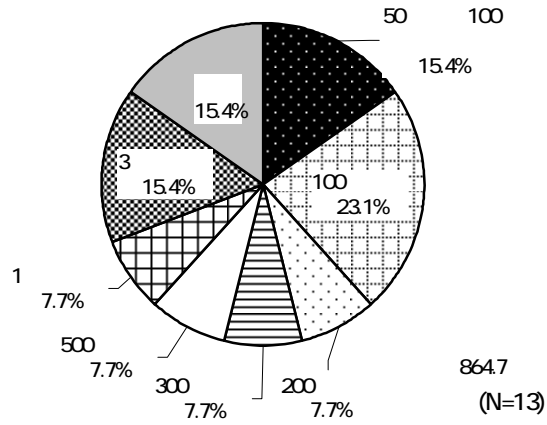


(N=13)

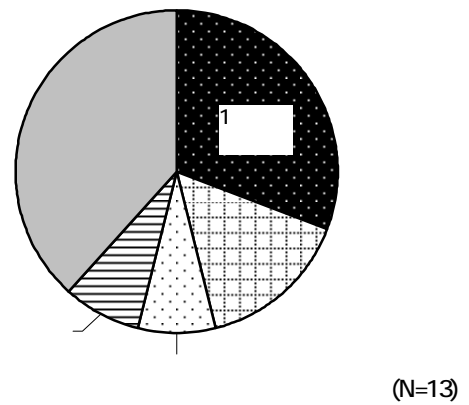
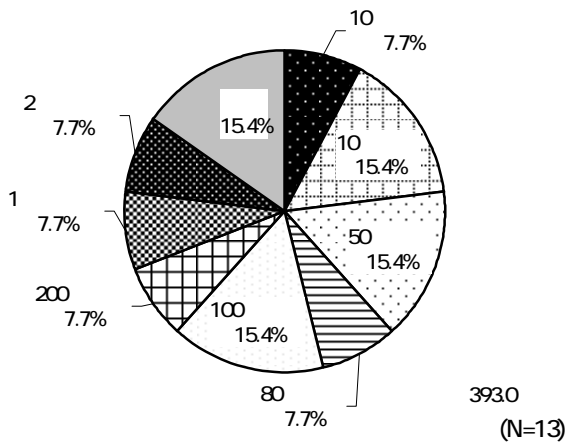


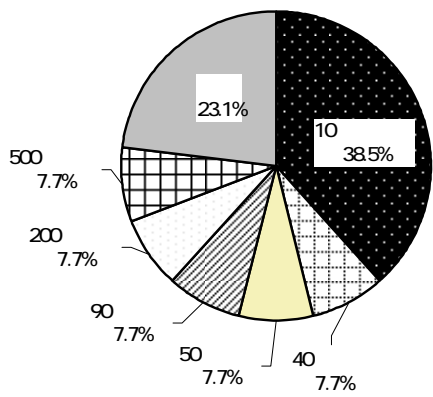
15  
(n=4)

20	100	23 1	50	100
15 4		15 4		

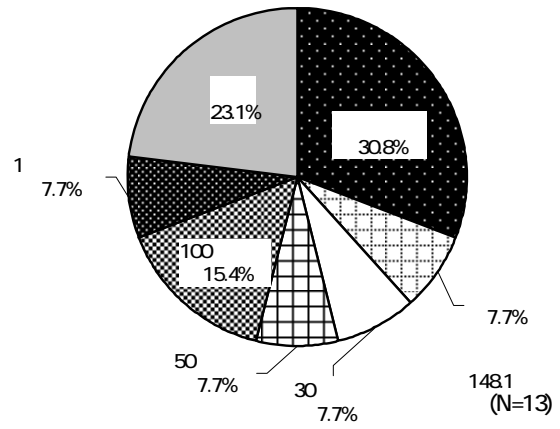


	10	2	
	30 8		15 4
10	38 5		
	30 8	100	15 4
10	15 4	10	15 4

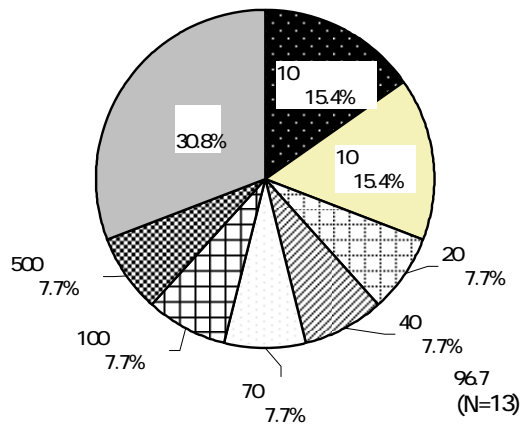




1030  
(N=13)



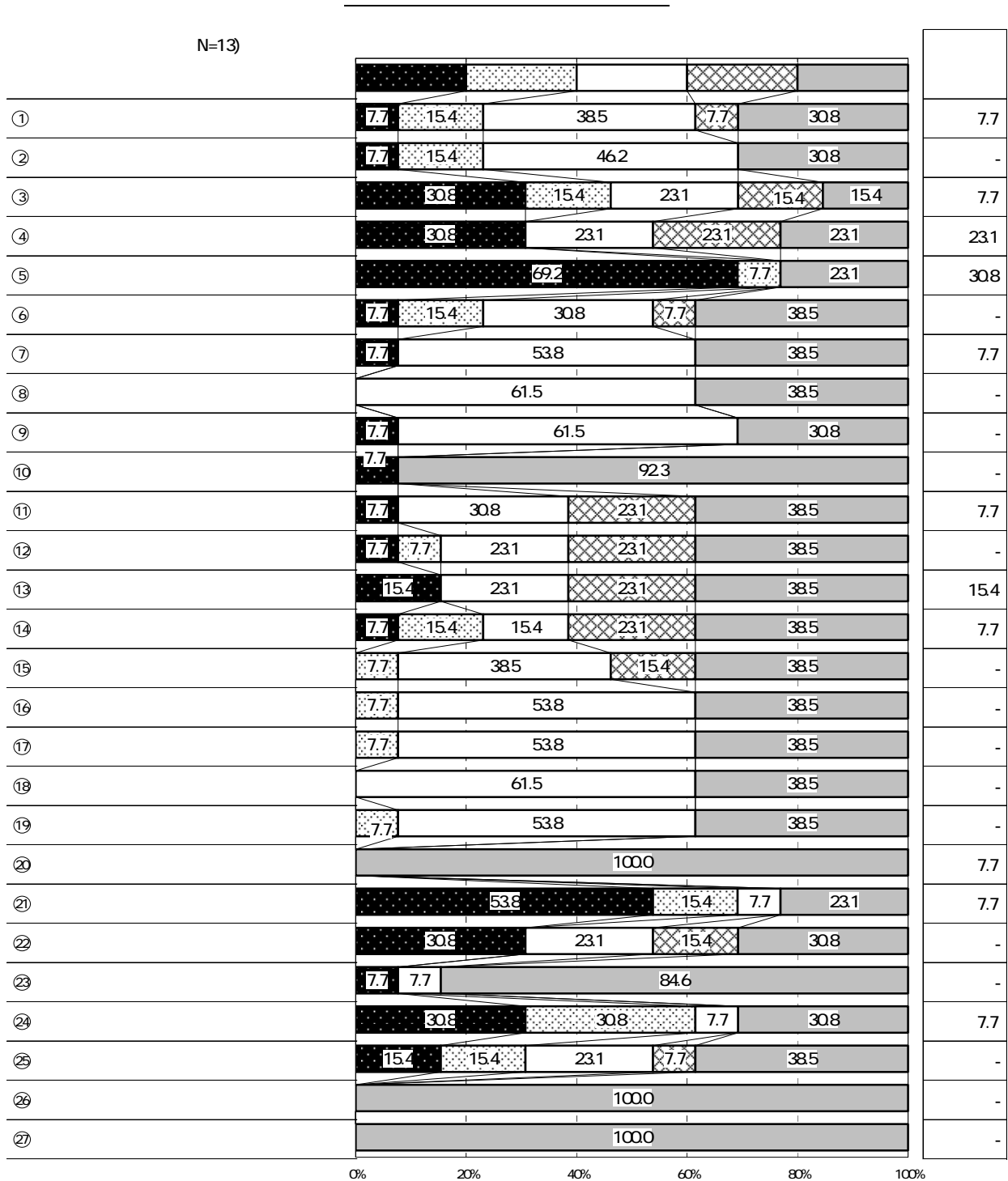
1481  
(N=13)



967  
(N=13)



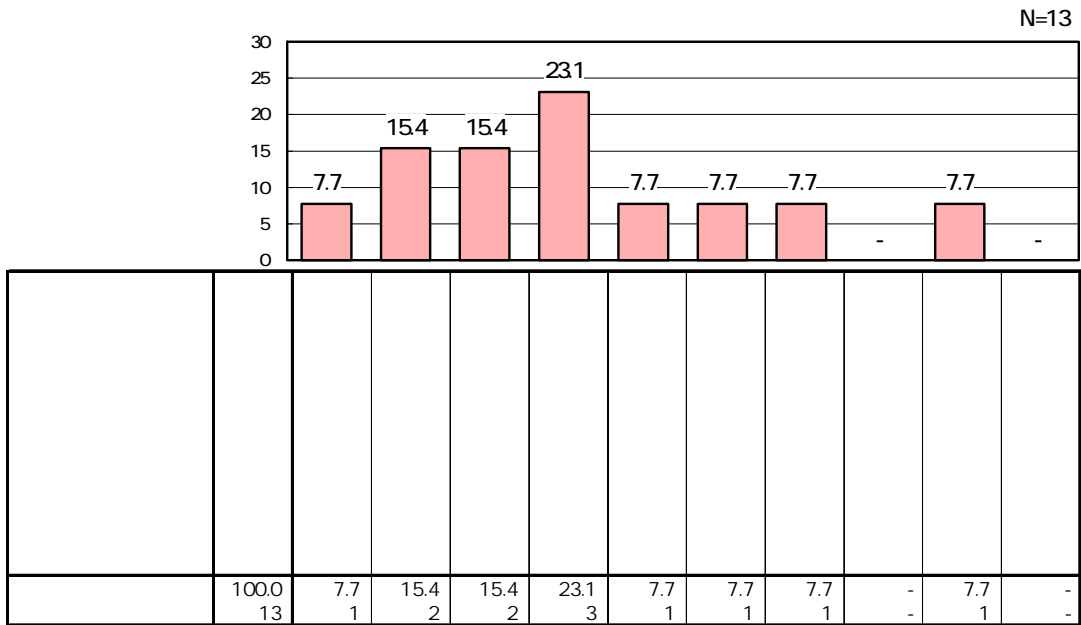
21	53.8	69.2
	23.1	15.4
		30.8



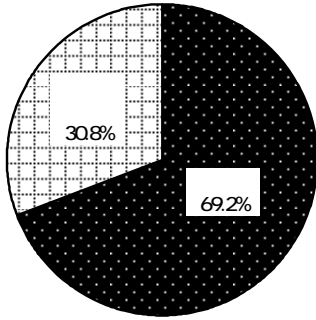
23.1

15.4

15.4



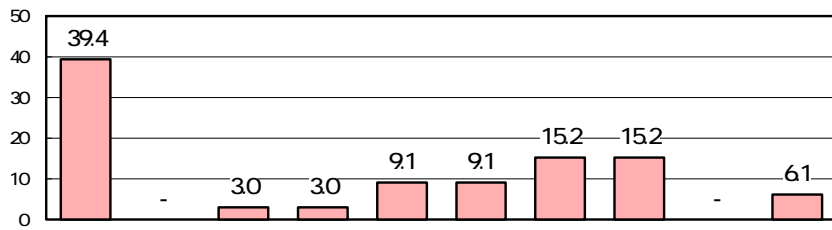
69.2



(N=13)

15.2	39.4
	15.2

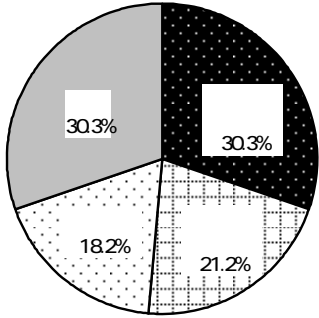
N=33



	100.0	39.4	-	3.0	3.0	9.1	9.1	15.2	15.2	-	6.1
	33	13	-	1	1	3	3	5	5	-	2

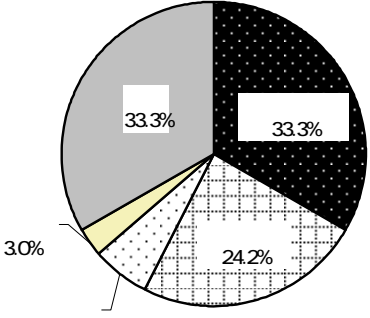
1		2
3		1
4		1
5		1
		1
		1
6		2
7		2
		1
		1
8		1
		1
9		2
		1
10		2
		1
		1
		1
11		2
		1
		1
		1
12		2
		1
	MP	1
		1
		1

18.2	30.3	21.2
------	------	------



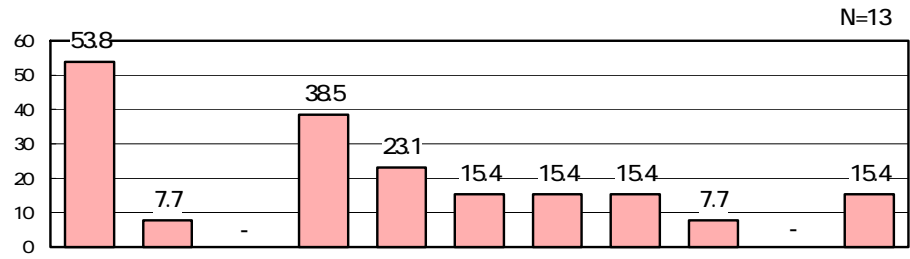
(N=33)

57.5	33.3	24.2
------	------	------



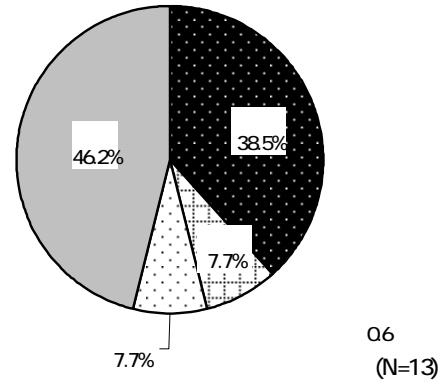
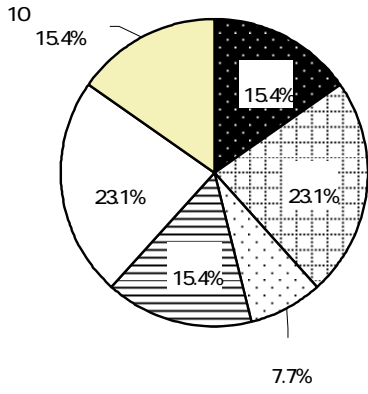
(N=33)

38 5	23 1	53 8
------	------	------

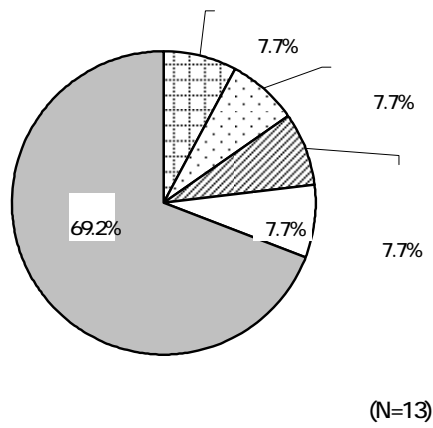


	100.0	53.8	7.7	-	38.5	23.1	15.4	15.4	15.4	7.7	-	15.4
	13	7	1	-	5	3	2	2	2	1	-	2

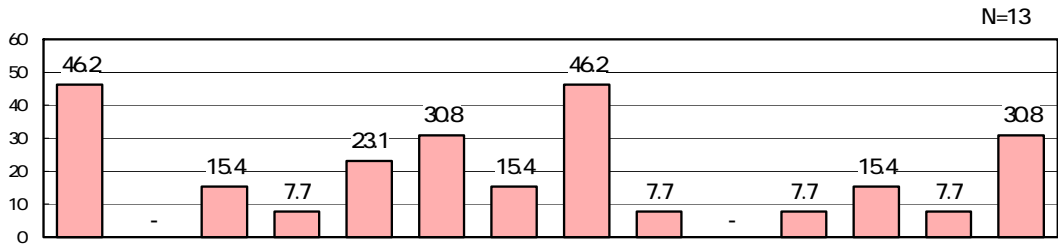

23 1	23 1
38 5	



7.7	7.7	7.7
-----	-----	-----



46.2 23.1	46.2 30.8
--------------	--------------



	100.0	46.2	-	15.4	7.7	23.1	30.8	15.4	46.2	7.7	-	7.7	15.4	7.7	30.8
	13	6	-	2	1	3	4	2	6	1	-	1	2	1	4









---


100	\1,000	1,500
...	"	" OK
	25/52	450
	100	
		50CC
	30	50
		...
	1/3	1/2
		ATM

---

\_\_\_\_\_


--	--	--	--

--

<p>21 8 1</p>
<p>21 8 24</p>

E-mail	

	<table border="1"> <tr> <td colspan="3"></td> <td></td> </tr> <tr> <td></td> <td></td> <td></td> <td></td> </tr> <tr> <td></td> <td></td> <td></td> <td></td> </tr> </table>														
		<table border="1"> <tr><td></td></tr> <tr><td></td></tr> <tr><td></td></tr> <tr><td></td></tr> </table>					<table border="1"> <tr><td></td></tr> <tr><td></td></tr> <tr><td></td></tr> <tr><td></td></tr> </table>								



10																	
11																	
12																	
13																	
14																	
15																	
16 20	<div style="display: flex; justify-content: space-around; align-items: center;"> <div style="border: 1px solid black; width: 150px; height: 25px; margin-bottom: 10px;"></div> <div style="text-align: center;"> <table border="1" style="border-collapse: collapse;"> <tr> <td style="width: 20px; height: 20px; text-align: center;"> </td> <td style="width: 20px; height: 20px; text-align: center;"> </td> <td style="width: 20px; height: 20px; text-align: center;"> </td> <td style="width: 20px; height: 20px; text-align: center;"> </td> <td style="width: 20px; height: 20px; text-align: center;"> </td> <td style="width: 20px; height: 20px; text-align: center;"> </td> <td style="width: 20px; height: 20px; text-align: center;"> </td> <td style="width: 20px; height: 20px; text-align: center;"> </td> </tr> <tr> <td style="width: 20px; height: 20px; text-align: center;"> </td> <td style="width: 20px; height: 20px; text-align: center;"> </td> <td style="width: 20px; height: 20px; text-align: center;"> </td> <td style="width: 20px; height: 20px; text-align: center;"> </td> <td style="width: 20px; height: 20px; text-align: center;"> </td> <td style="width: 20px; height: 20px; text-align: center;"> </td> <td style="width: 20px; height: 20px; text-align: center;"> </td> <td style="width: 20px; height: 20px; text-align: center;"> </td> </tr> </table> </div> </div>																

17 ( )

18

65



20

--

21 20


--

--

22

19

25

--


24

--

25

\_\_\_\_\_


26 25


27

--

28 27


29

100

						100

						100

30

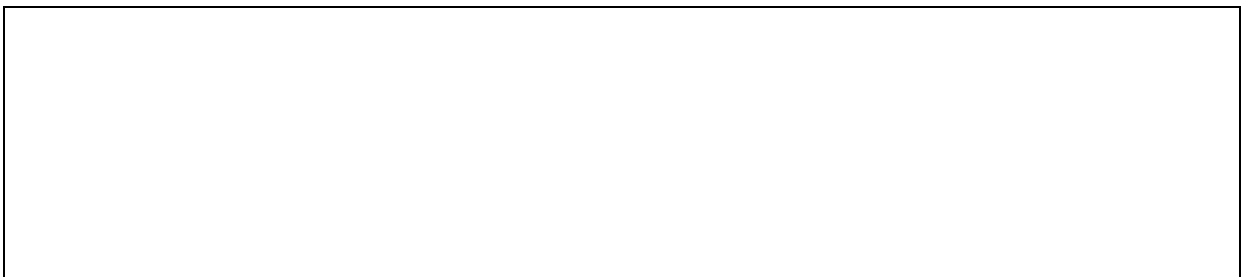
--

31


32

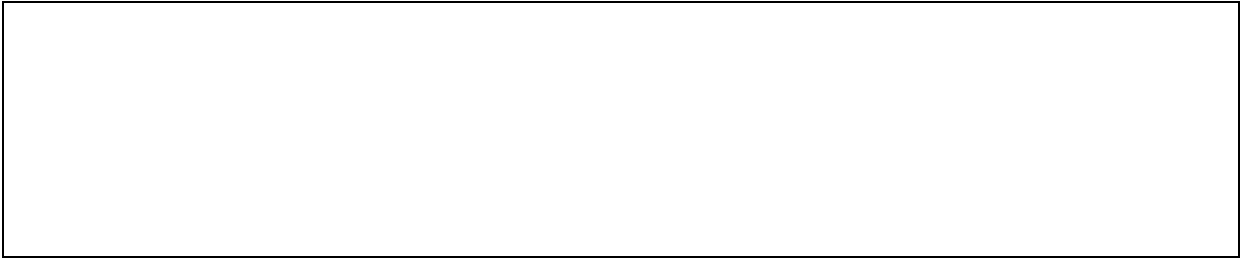
--

	○	○	○	○	○





35



36



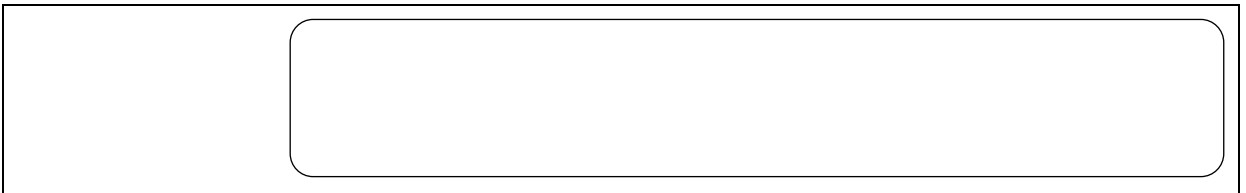
37



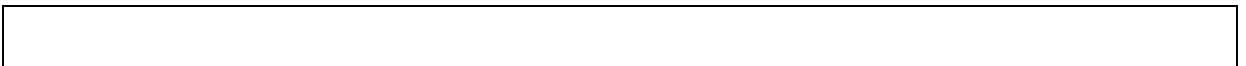
38



39



40



41







43

[Empty rectangular box]

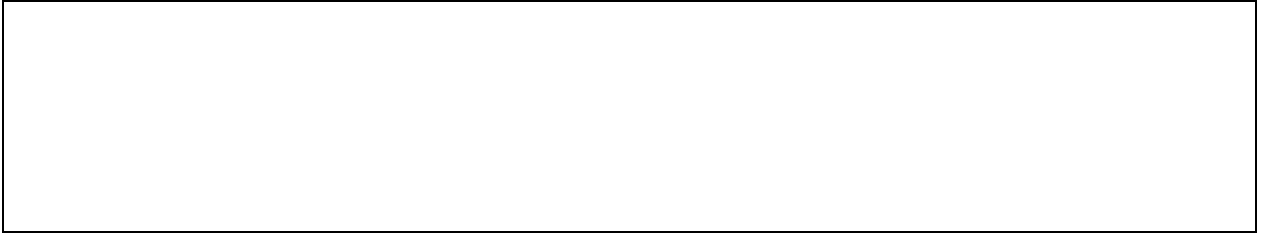
44 43

						○	○			



[Empty rectangular box]

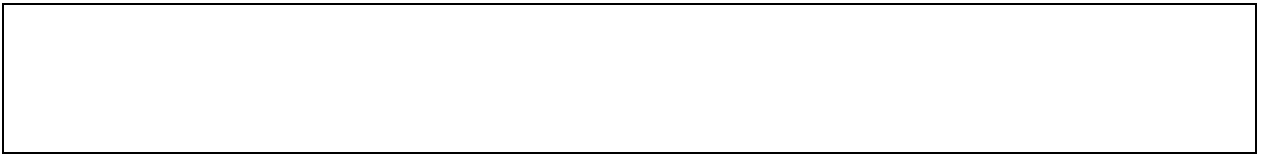
45



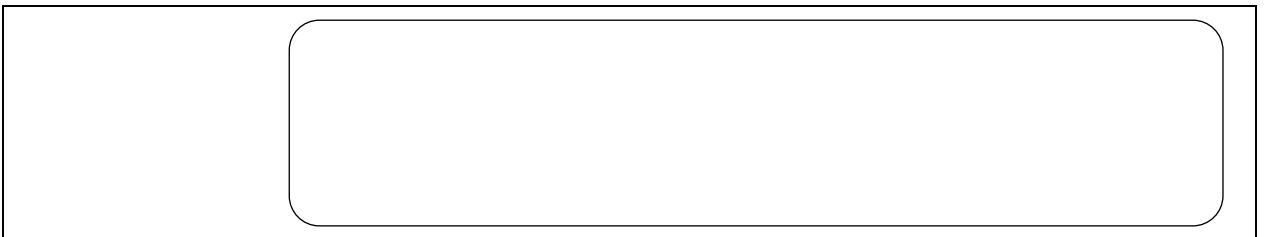
46



47



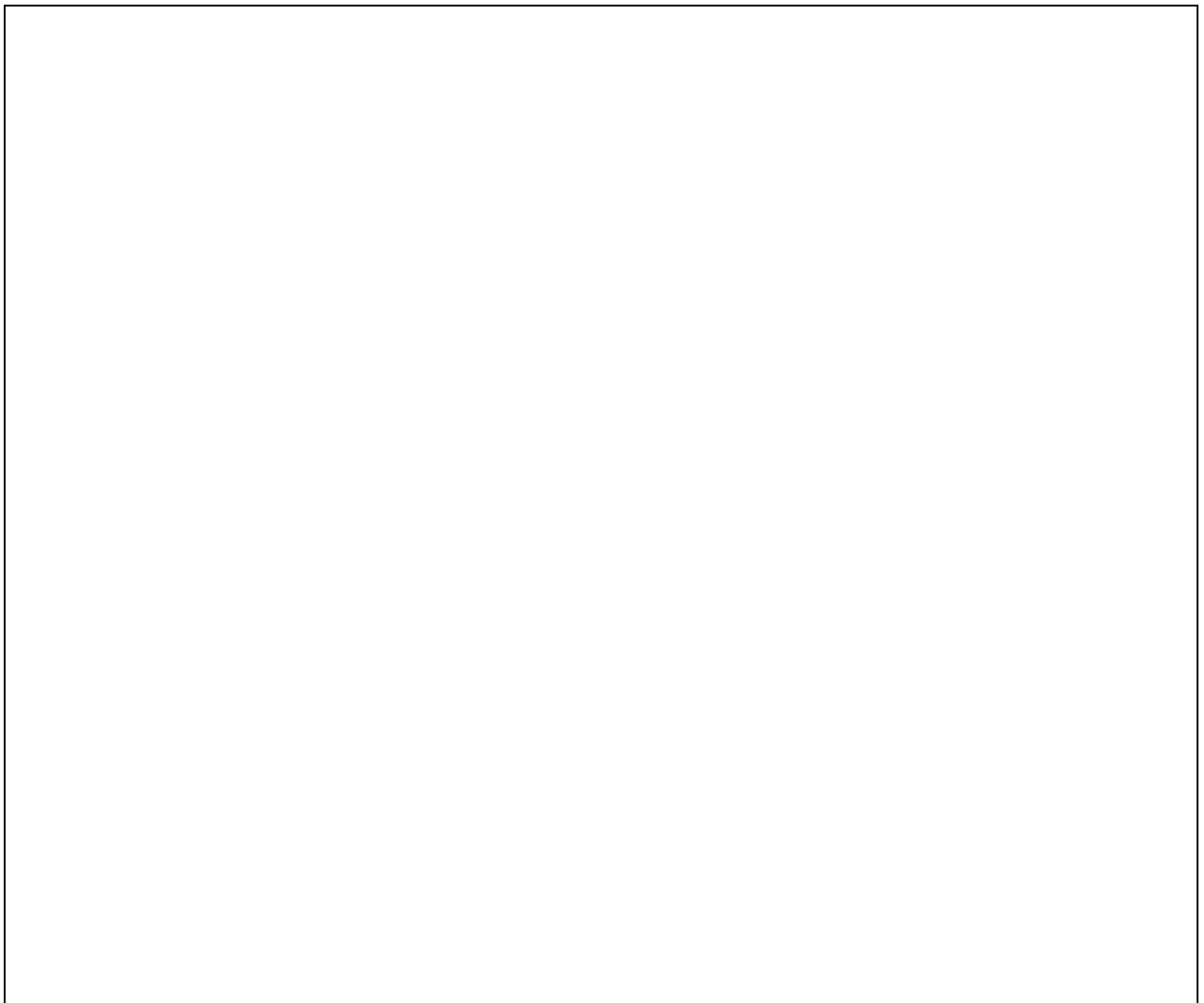
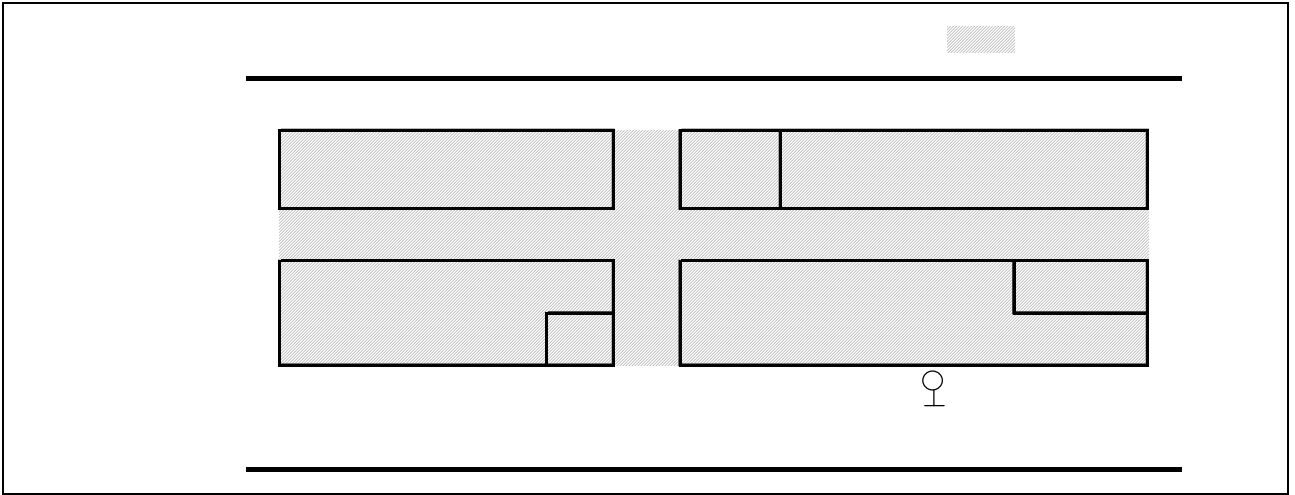
48



49








[       ]

--

[       ]

8 24       9 18

--

\_\_\_\_\_



--	--	--	--

\_\_\_\_\_

<p style="text-align: center;"><u>21 8 1</u></p> <p style="text-align: center;"><u>21 8 24</u></p> <p>_____</p>
---

<b>E-mail</b>	

		<table border="1"> <tr><td></td></tr> <tr><td></td></tr> <tr><td></td></tr> <tr><td></td></tr> </table> <table border="1"> <tr><td></td></tr> <tr><td></td></tr> <tr><td></td></tr> <tr><td></td></tr> </table>																																																																	
20	<table border="1"> <tr><td></td></tr> </table>		<table border="1"> <tr> <td></td><td></td><td></td><td></td><td></td><td></td><td></td><td></td> </tr> <tr> <td></td><td></td><td></td><td></td><td></td><td></td><td></td><td></td> </tr> <tr> <td></td><td></td><td></td><td></td><td></td><td></td><td></td><td></td> </tr> <tr> <td></td><td></td><td></td><td></td><td></td><td></td><td></td><td></td> </tr> <tr> <td></td><td></td><td></td><td></td><td></td><td></td><td></td><td></td> </tr> <tr> <td></td><td></td><td></td><td></td><td></td><td></td><td></td><td></td> </tr> <tr> <td></td><td></td><td></td><td></td><td></td><td></td><td></td><td></td> </tr> <tr> <td></td><td></td><td></td><td></td><td></td><td></td><td></td><td></td> </tr> </table>																																																																

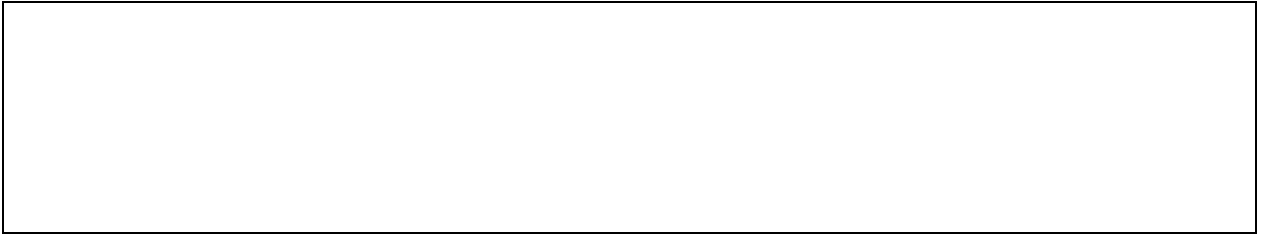








13



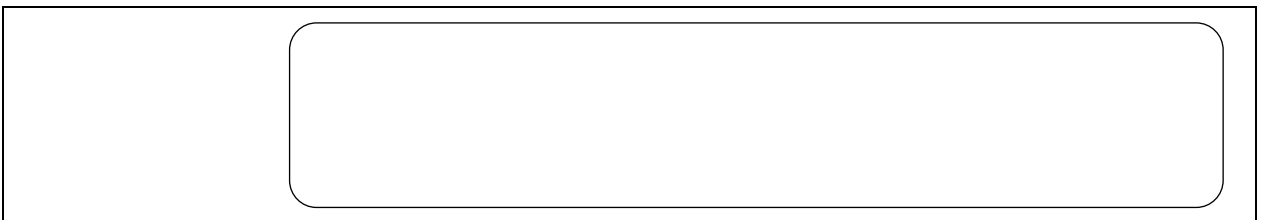
14



15



16



17




[      ]

--

[      ]

8 24      9 18

--

\_\_\_\_\_



