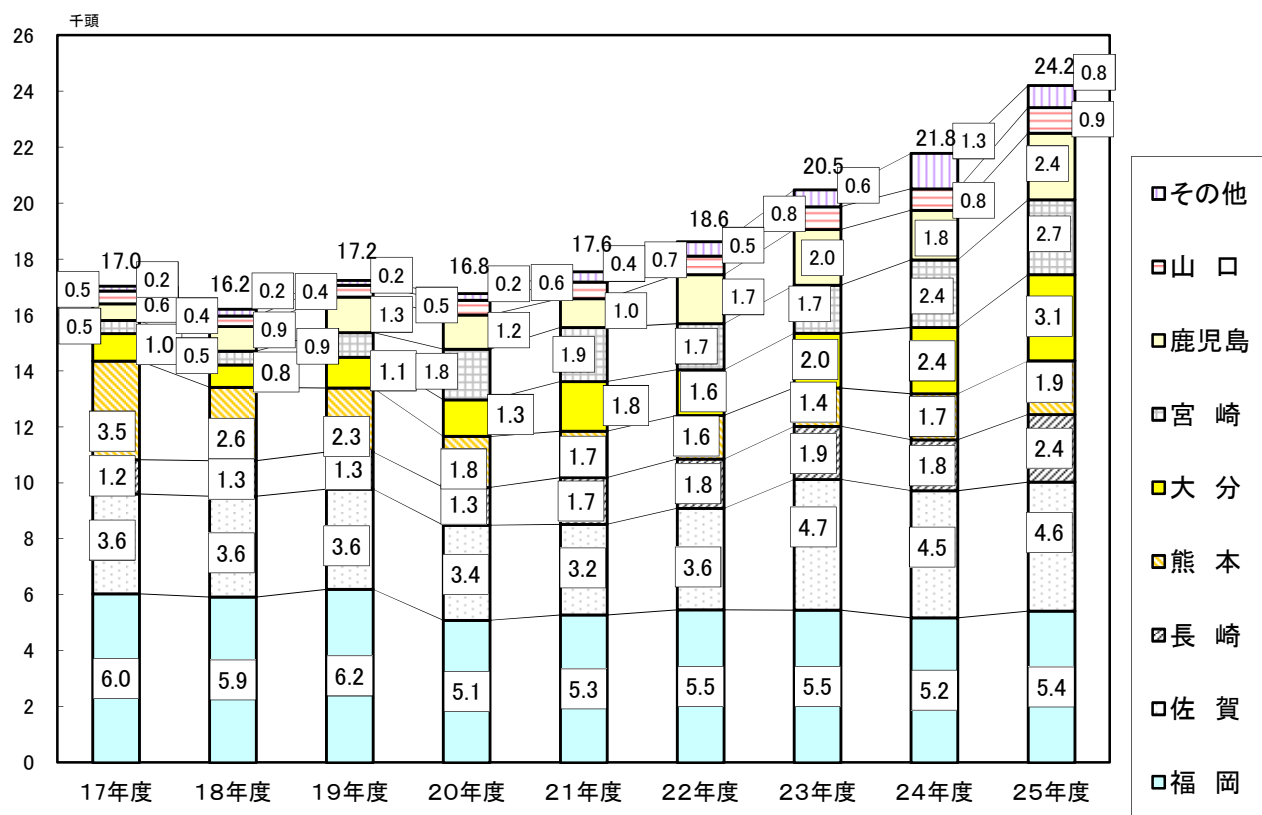


グ ラ フ

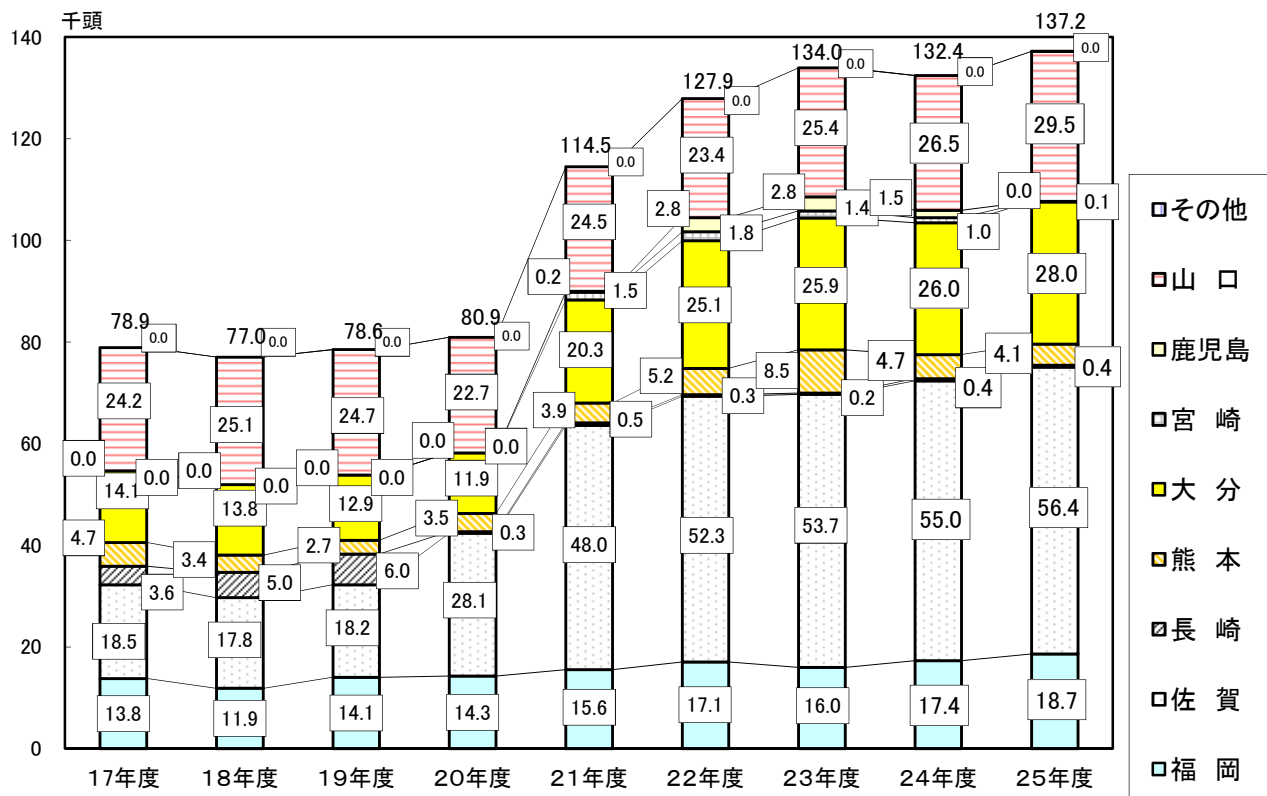
1. と畜頭数

(1) 年度別

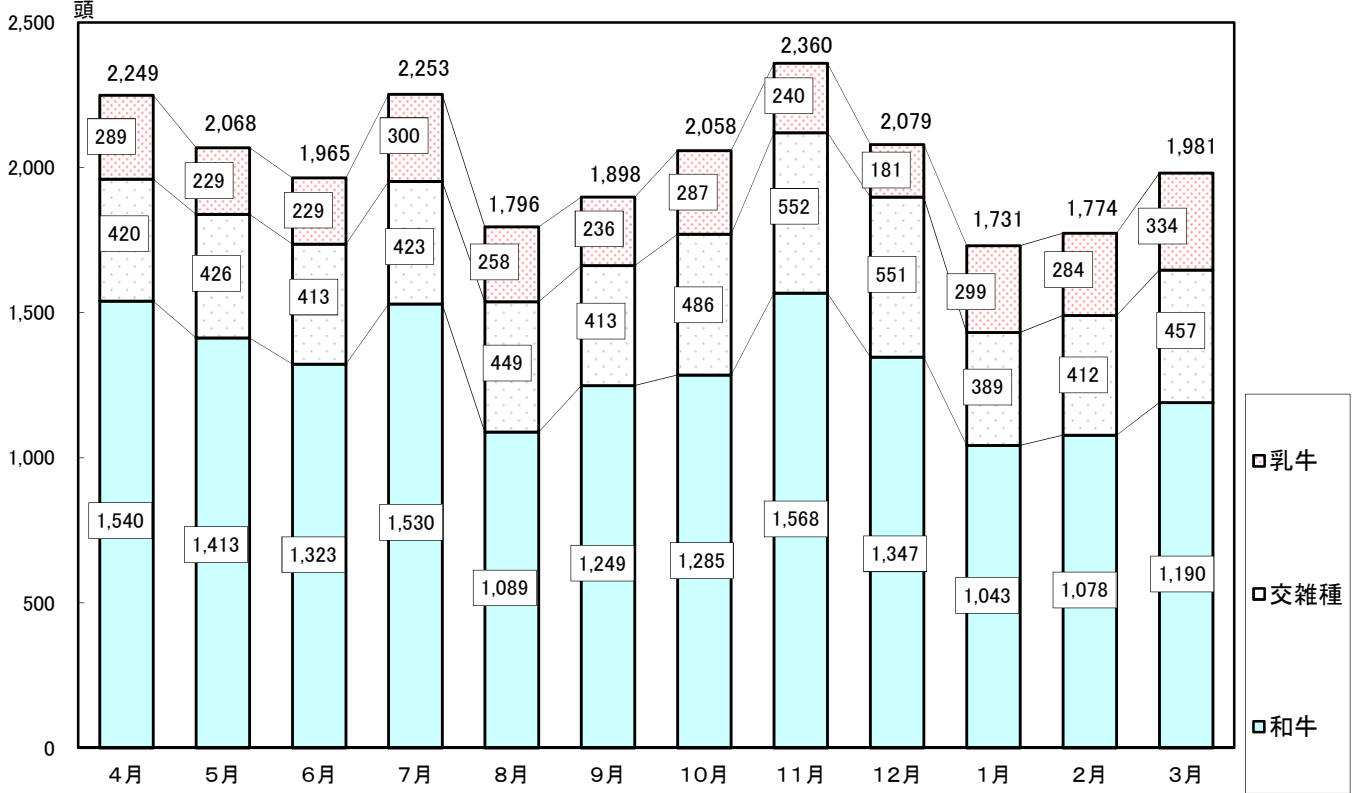
成牛



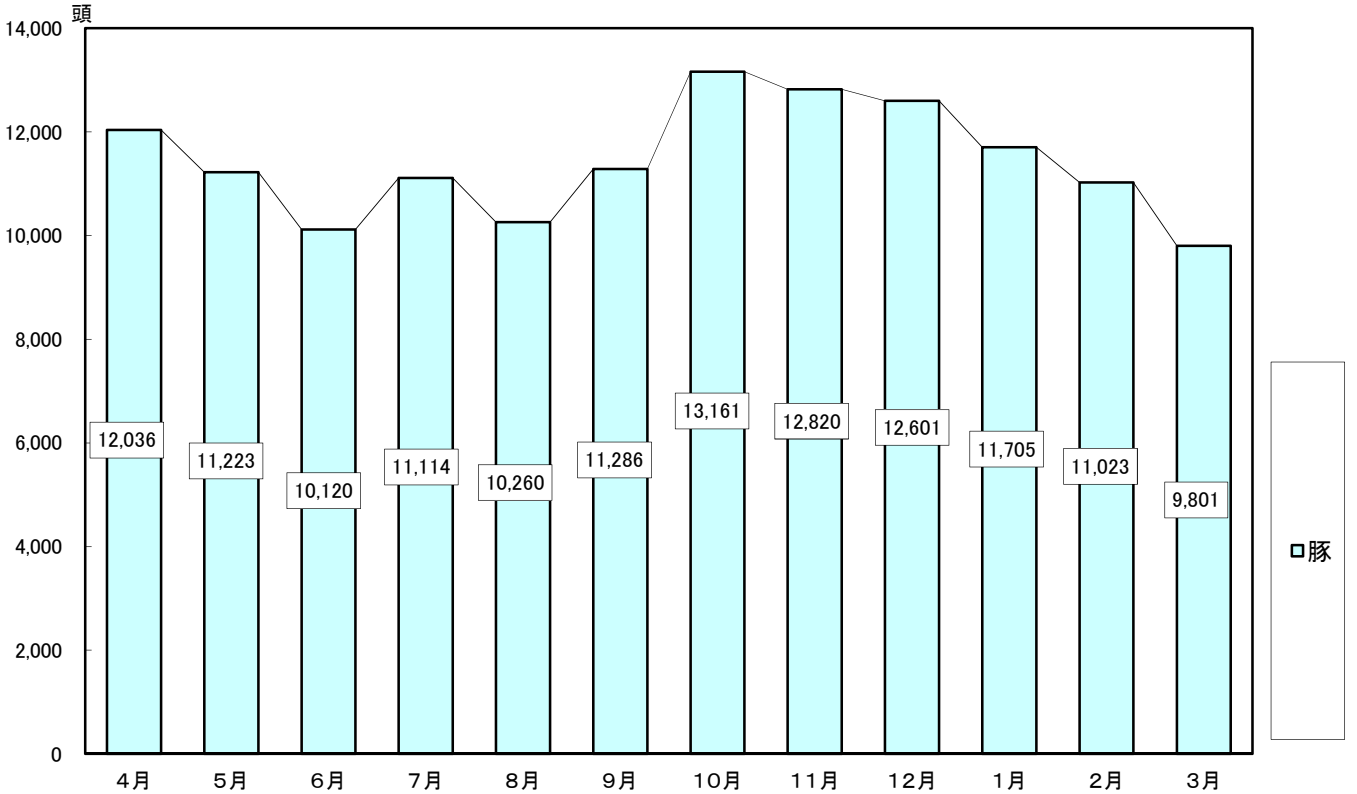
豚



成牛

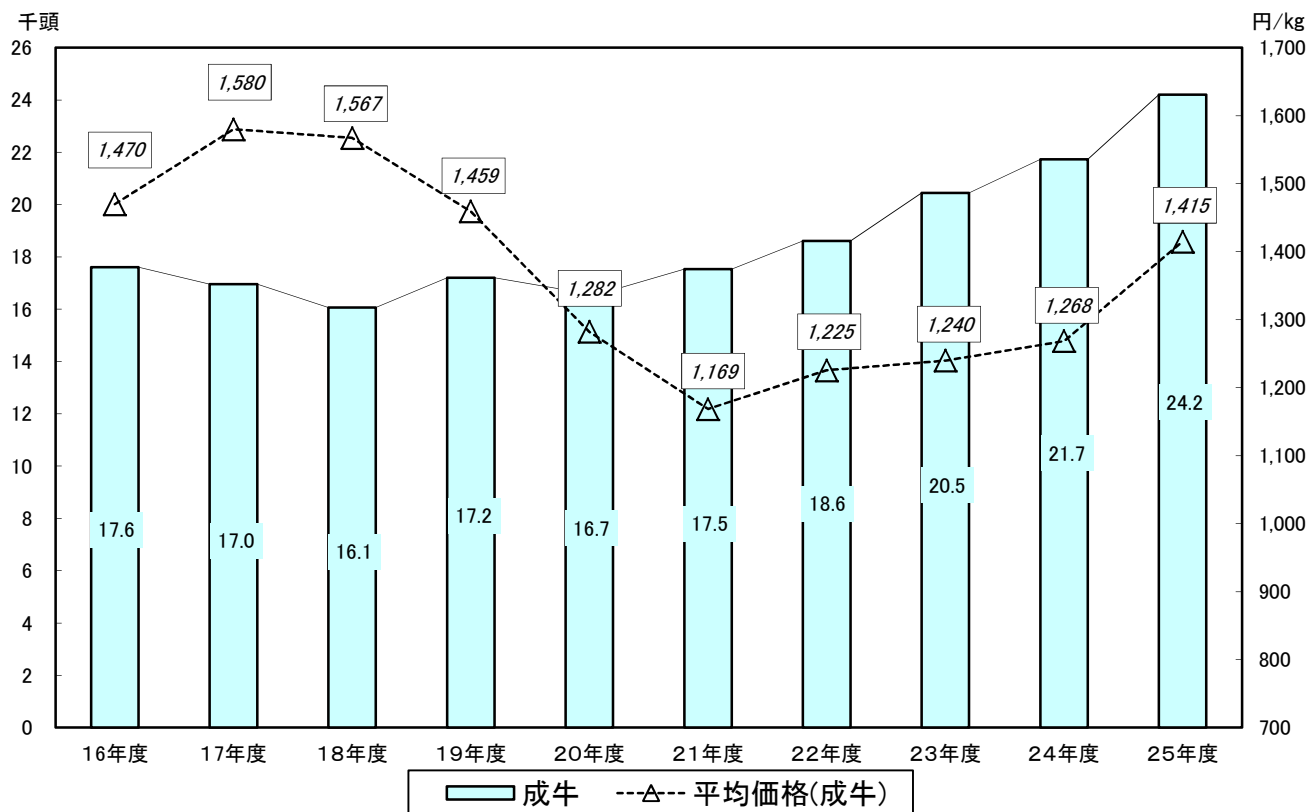


豚

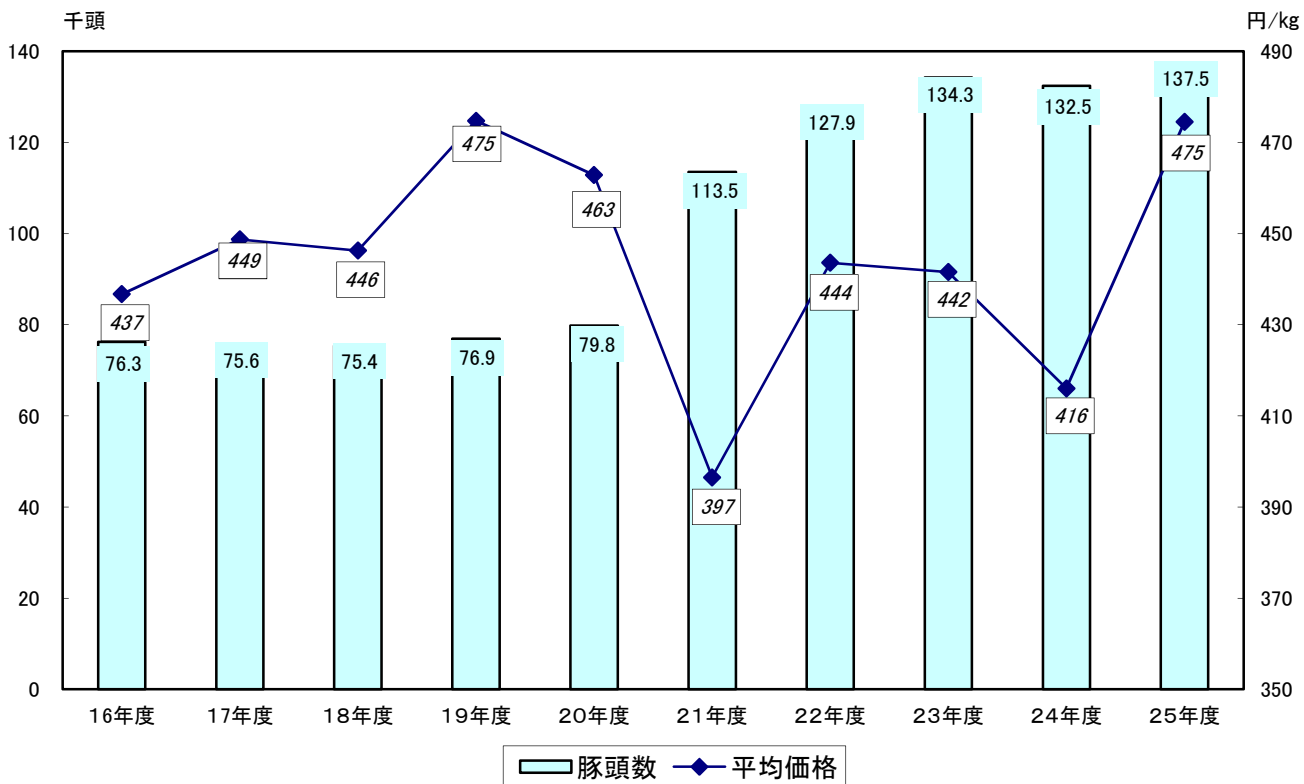


2. 総取扱高（年度別）

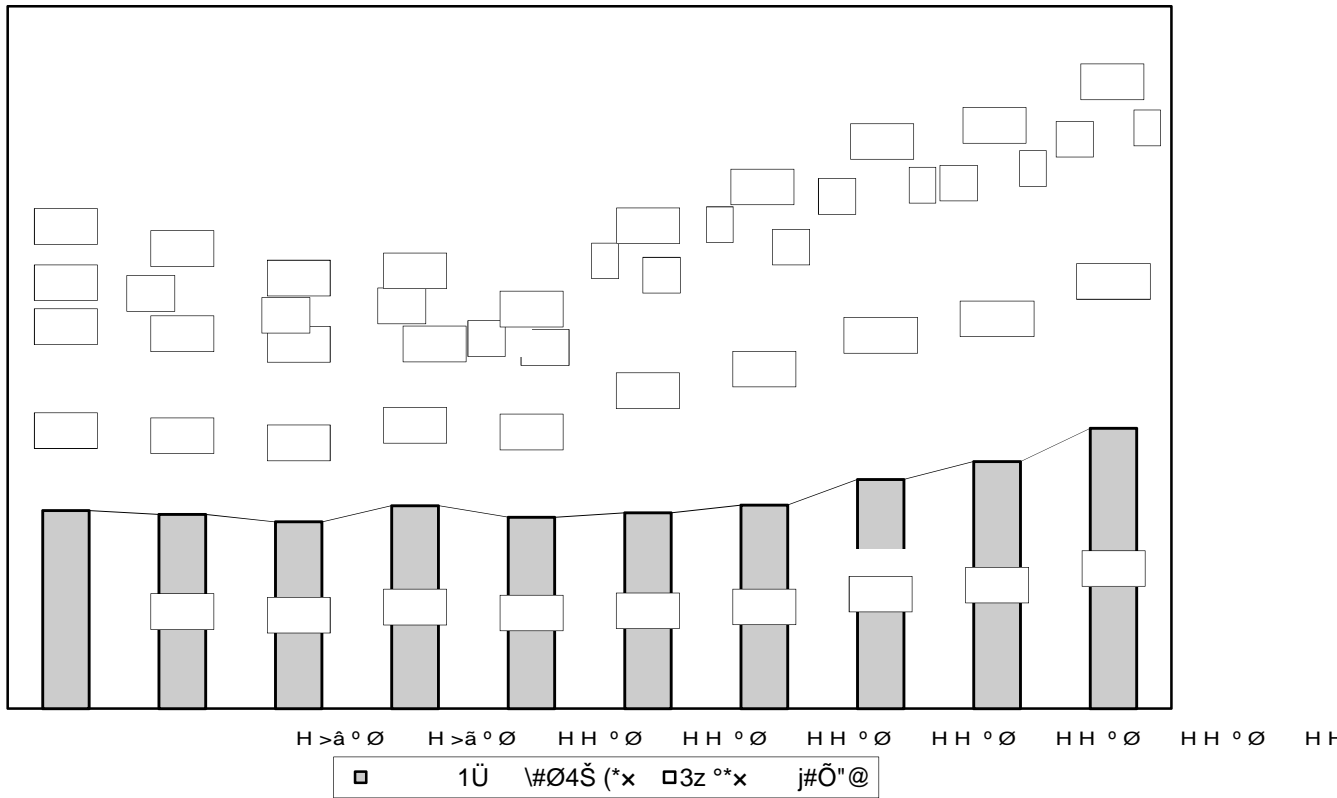
取扱頭数と平均価格（牛）



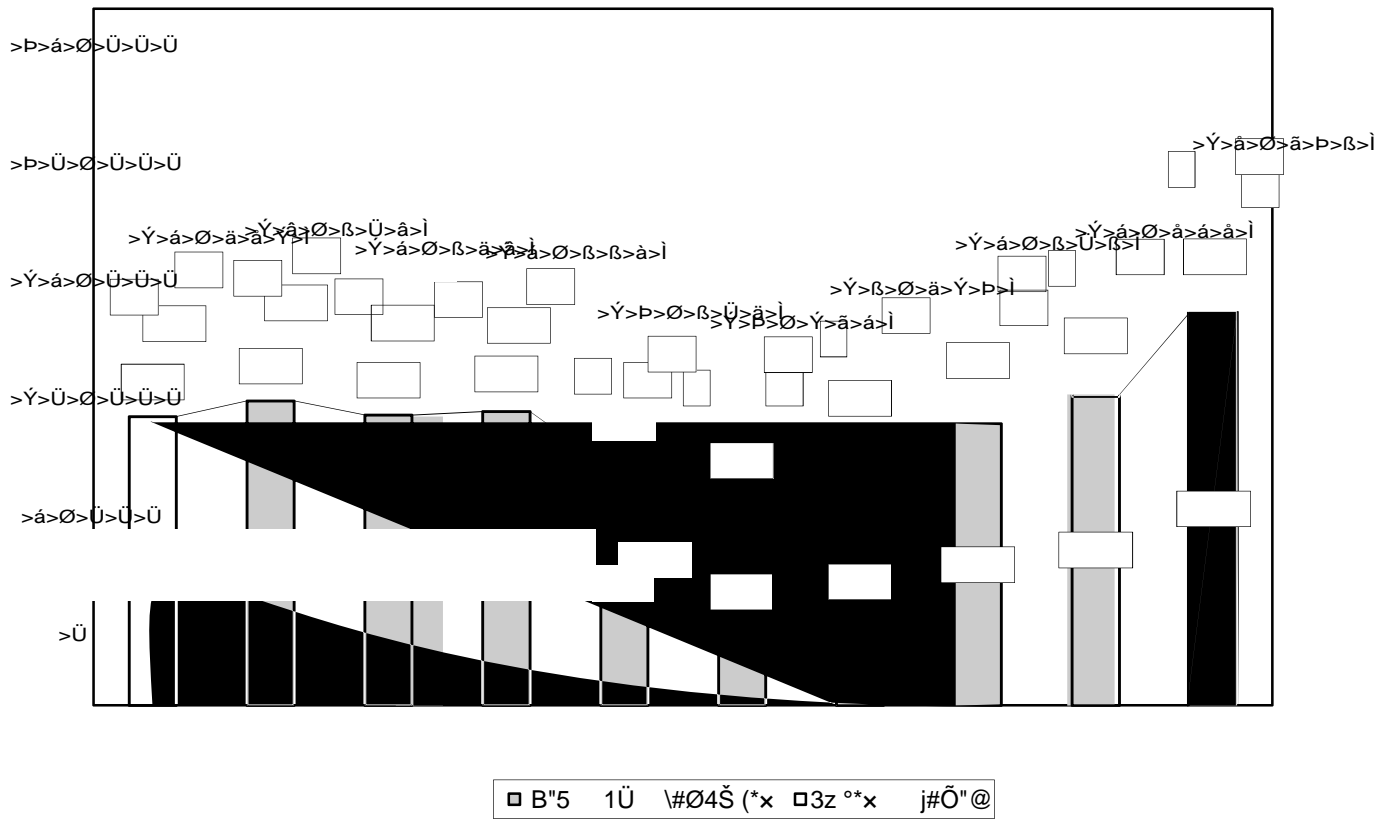
取扱頭数と平均価格（豚）



5 5 Fp N&ã



5 8 Fp N&ã

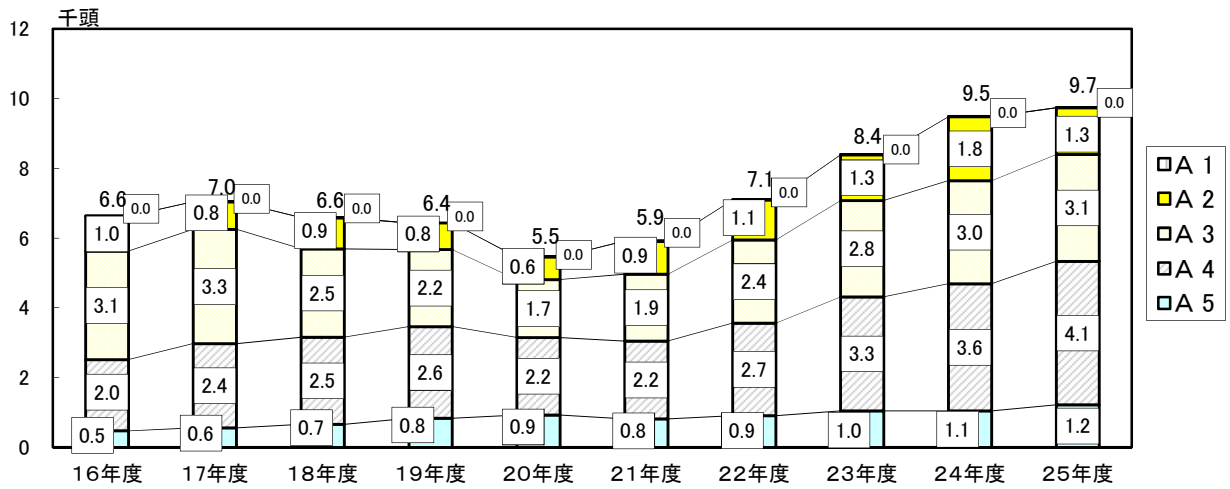


>ÜF.H F.>Ü

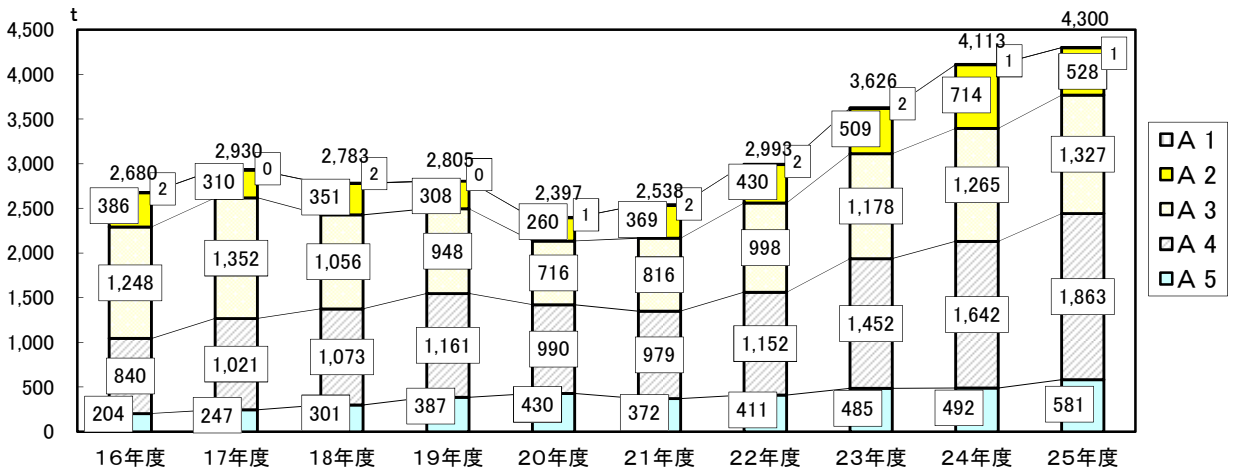
3. 格付け等級別 取扱頭数

(1) 成牛 (A)

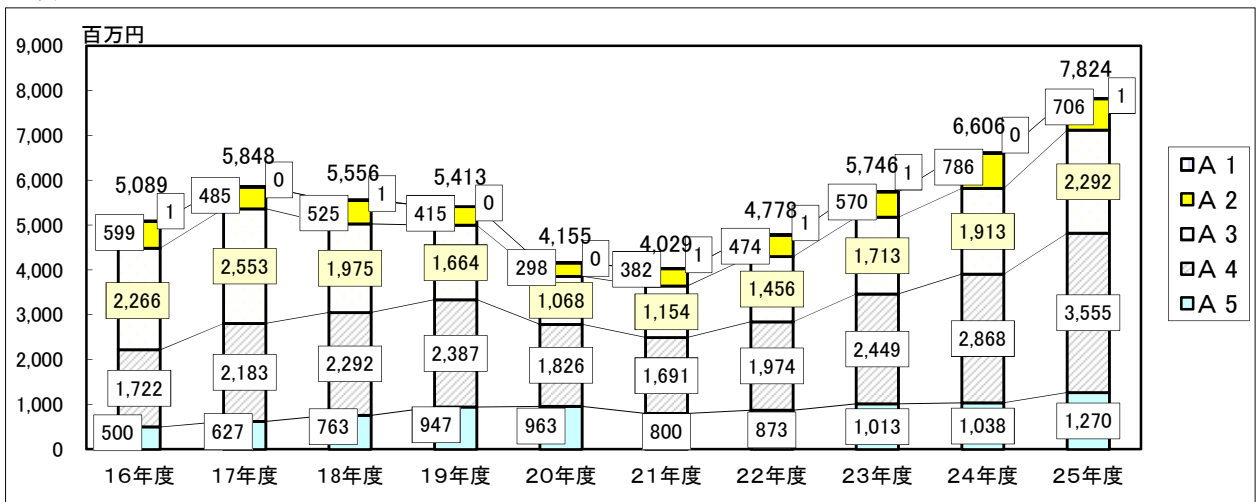
頭数



重量

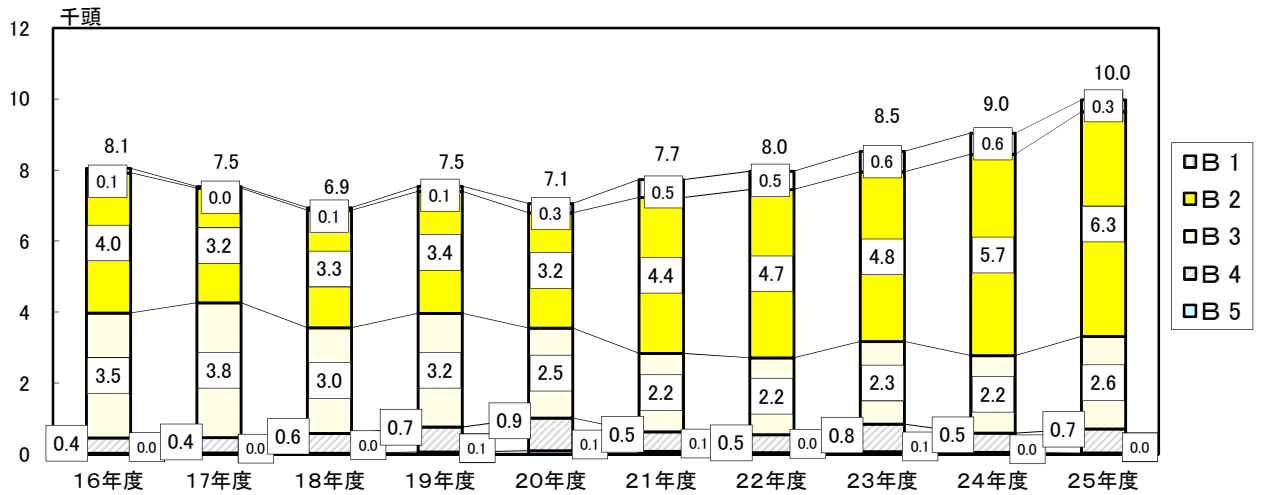


金額

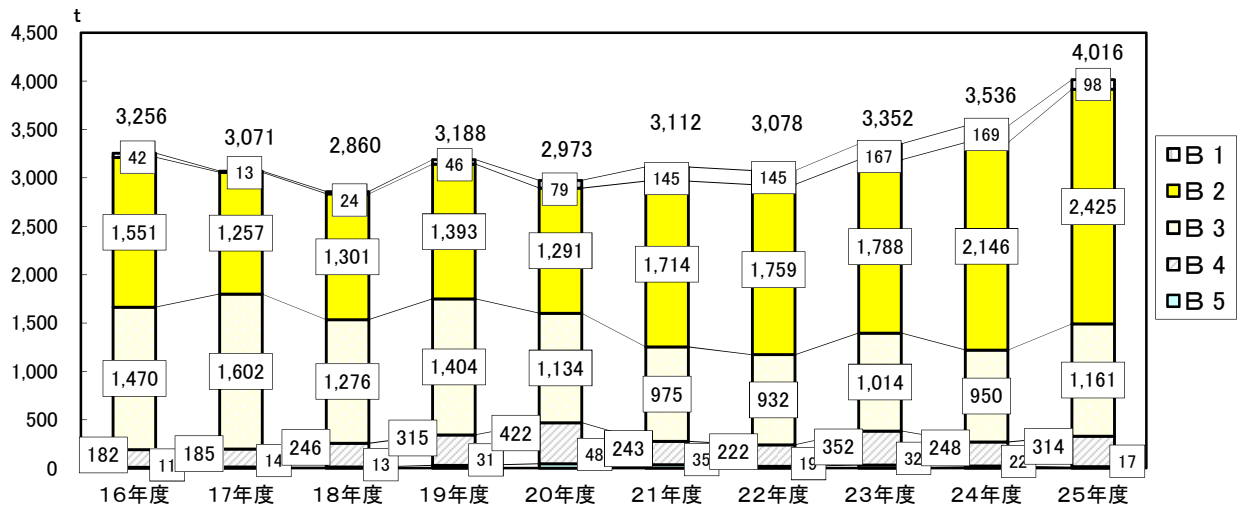


(2) 成牛 (B)

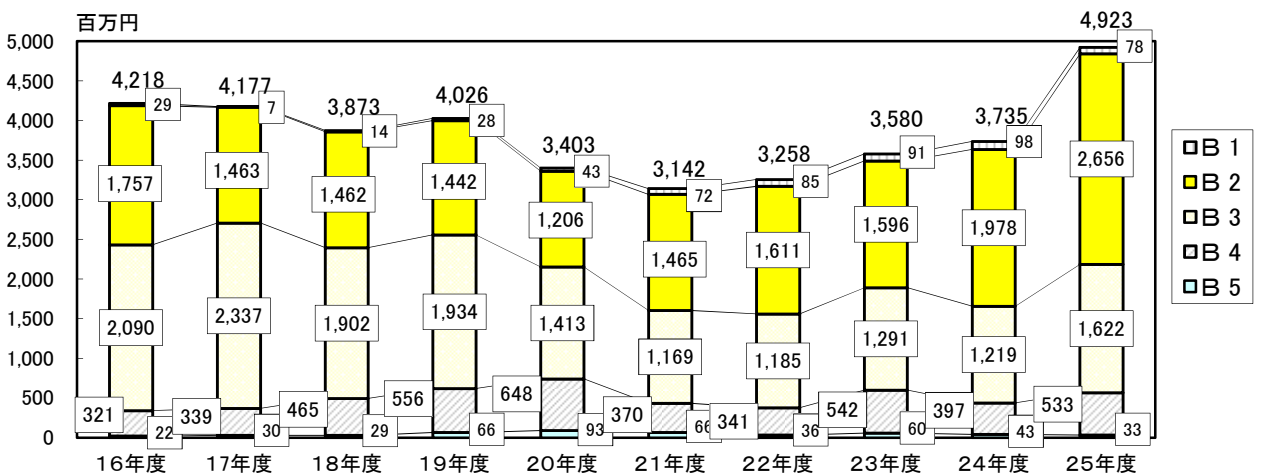
頭数



重量

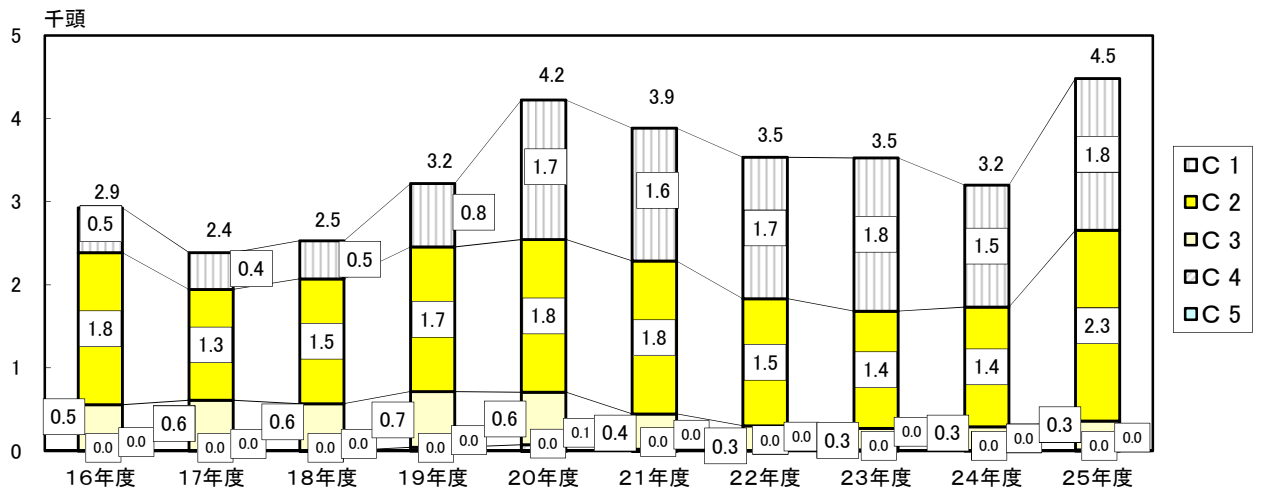


金額

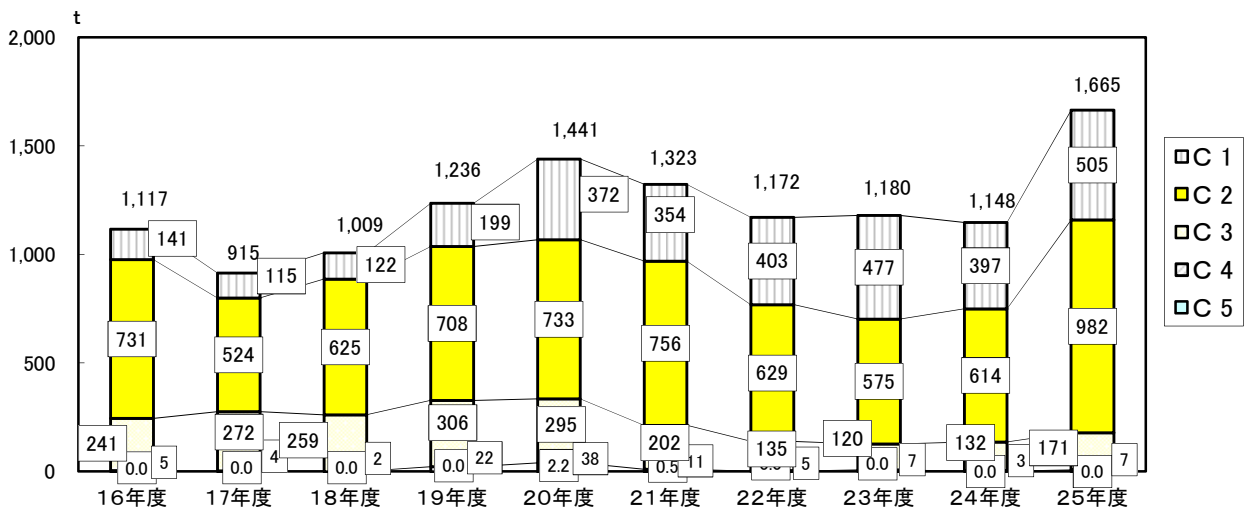


(3)成牛 (C)

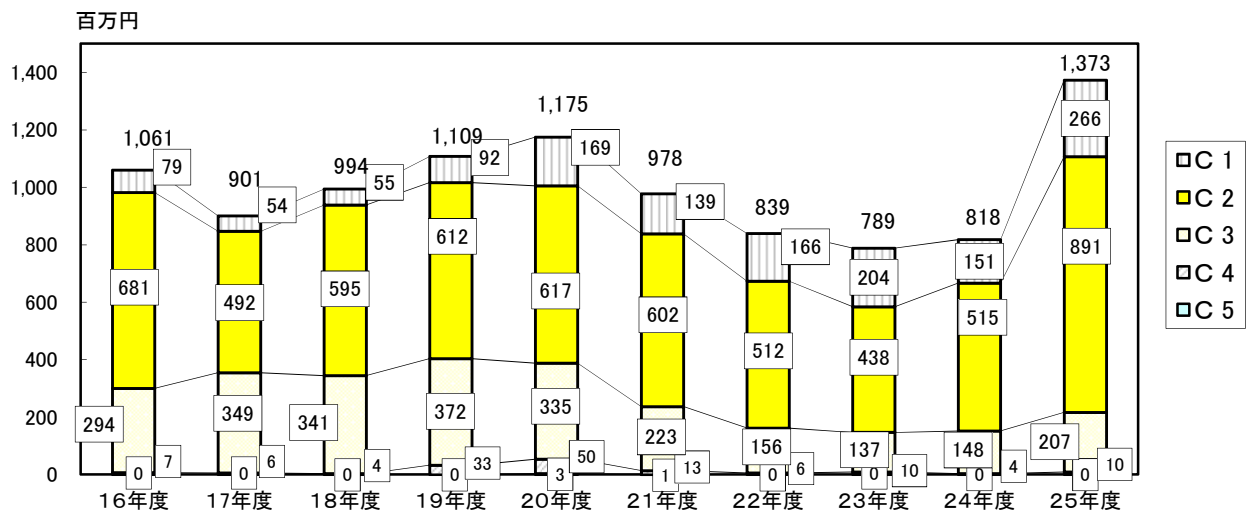
頭数



重量

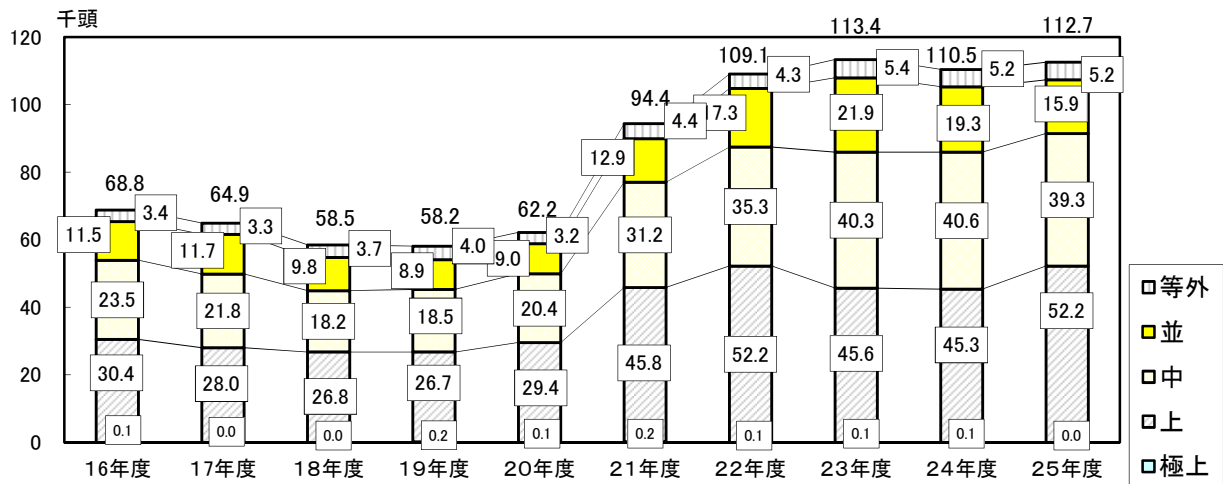


金額

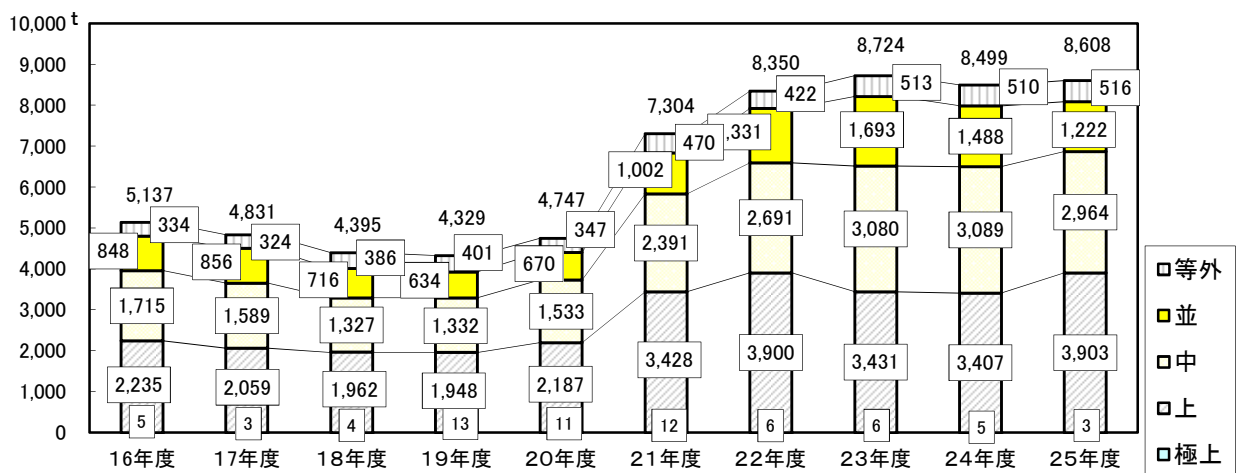


(4) 豚

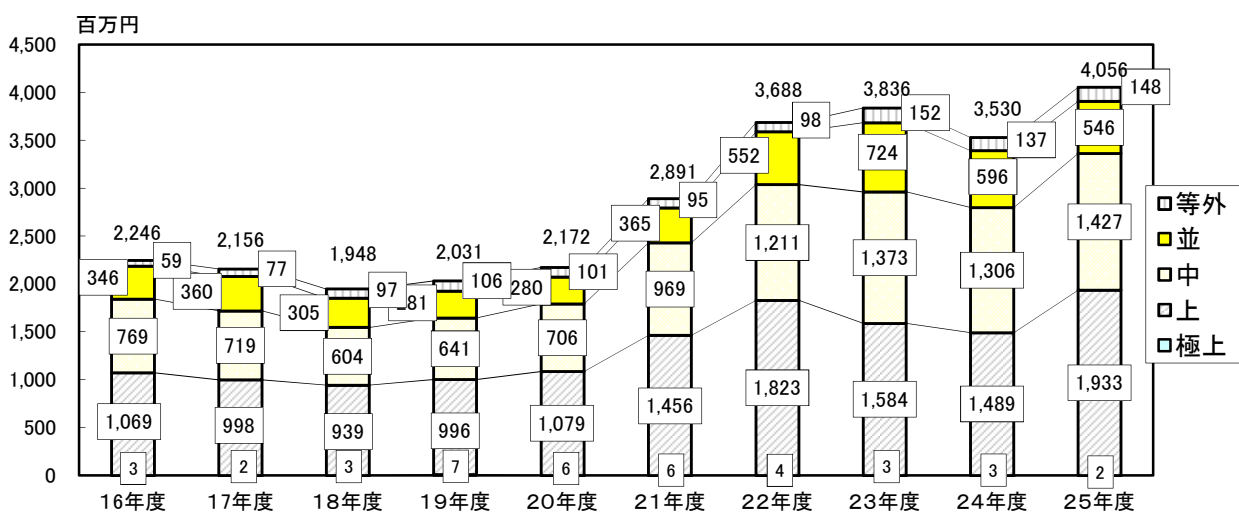
頭数



重量

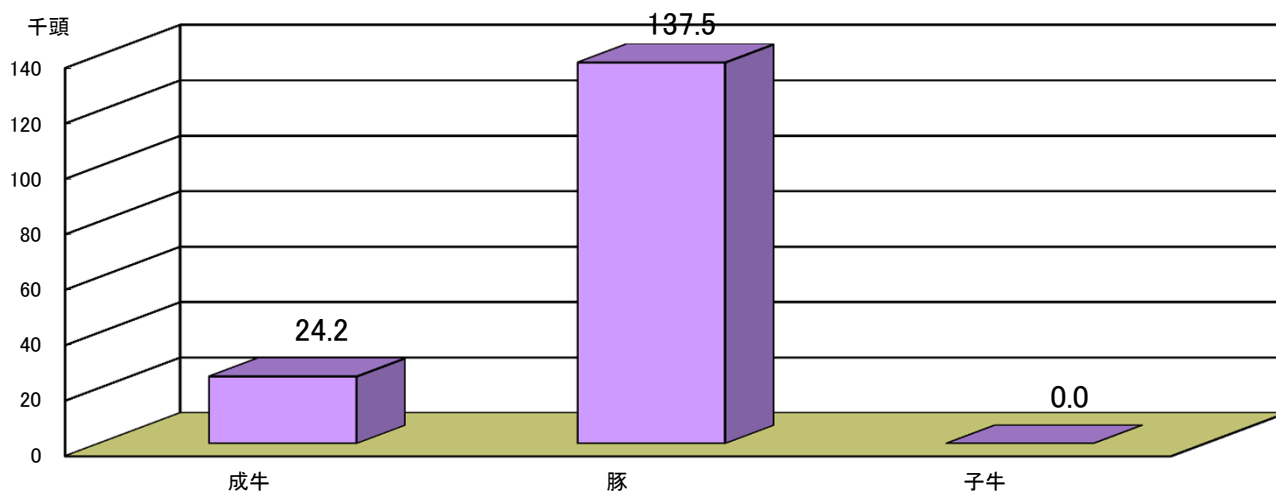


金額

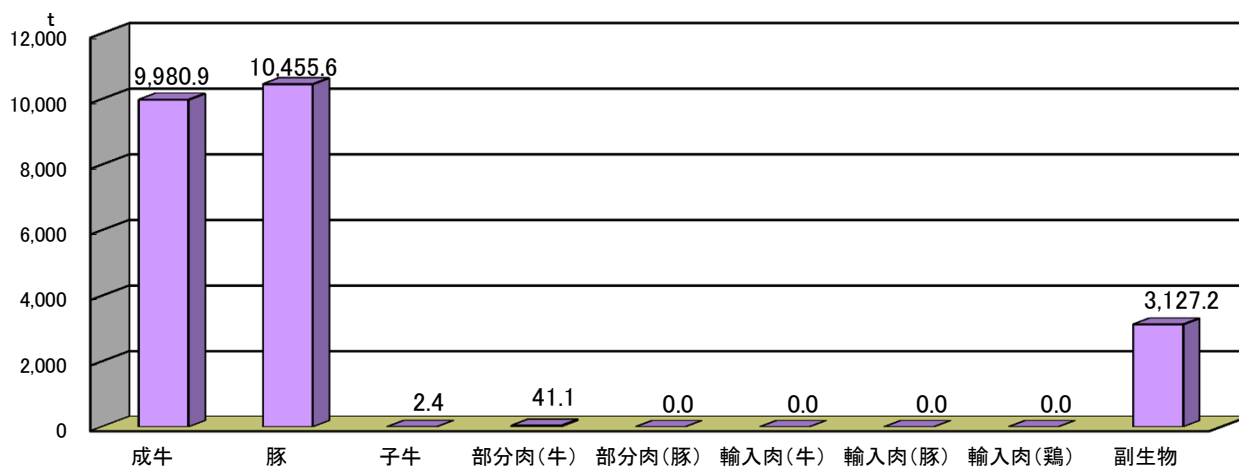


4. 平成25年度 取扱高

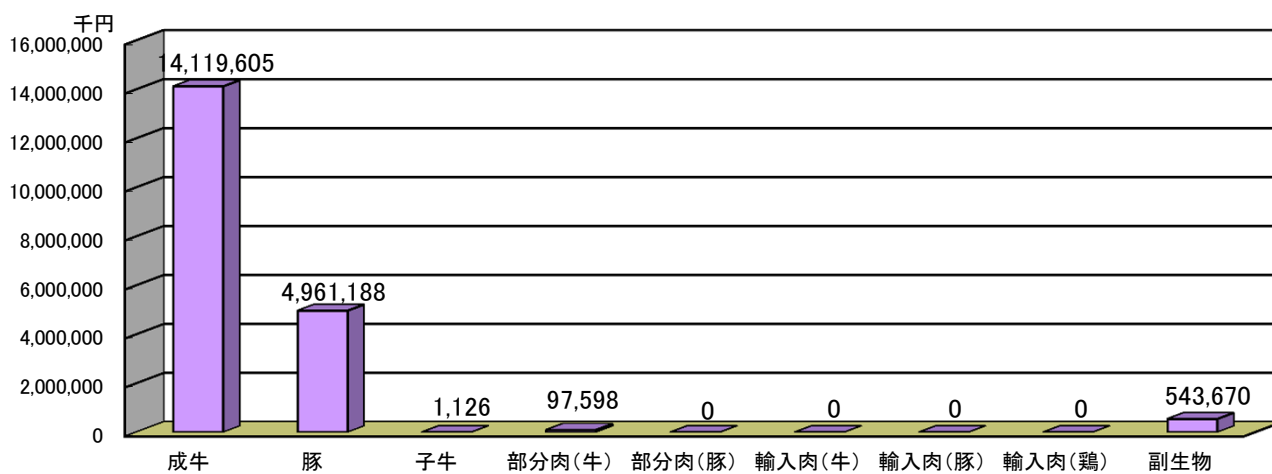
頭数



重量



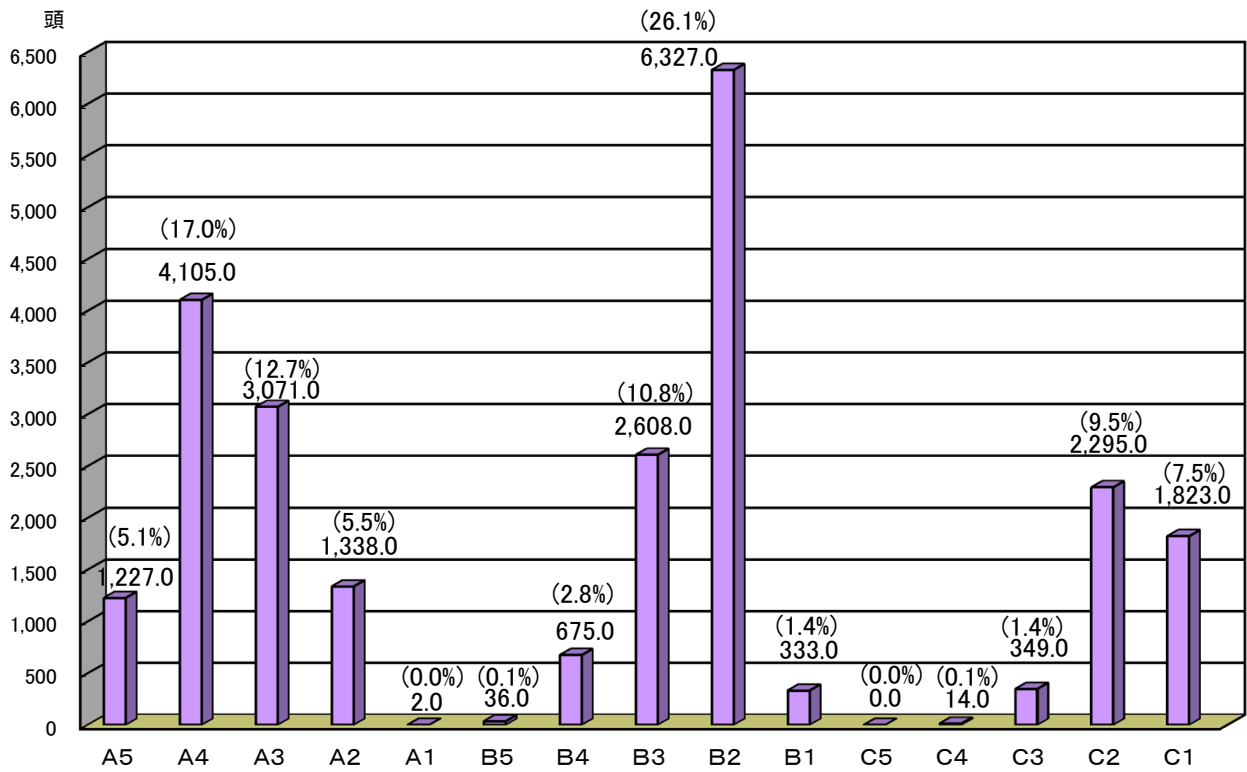
金額



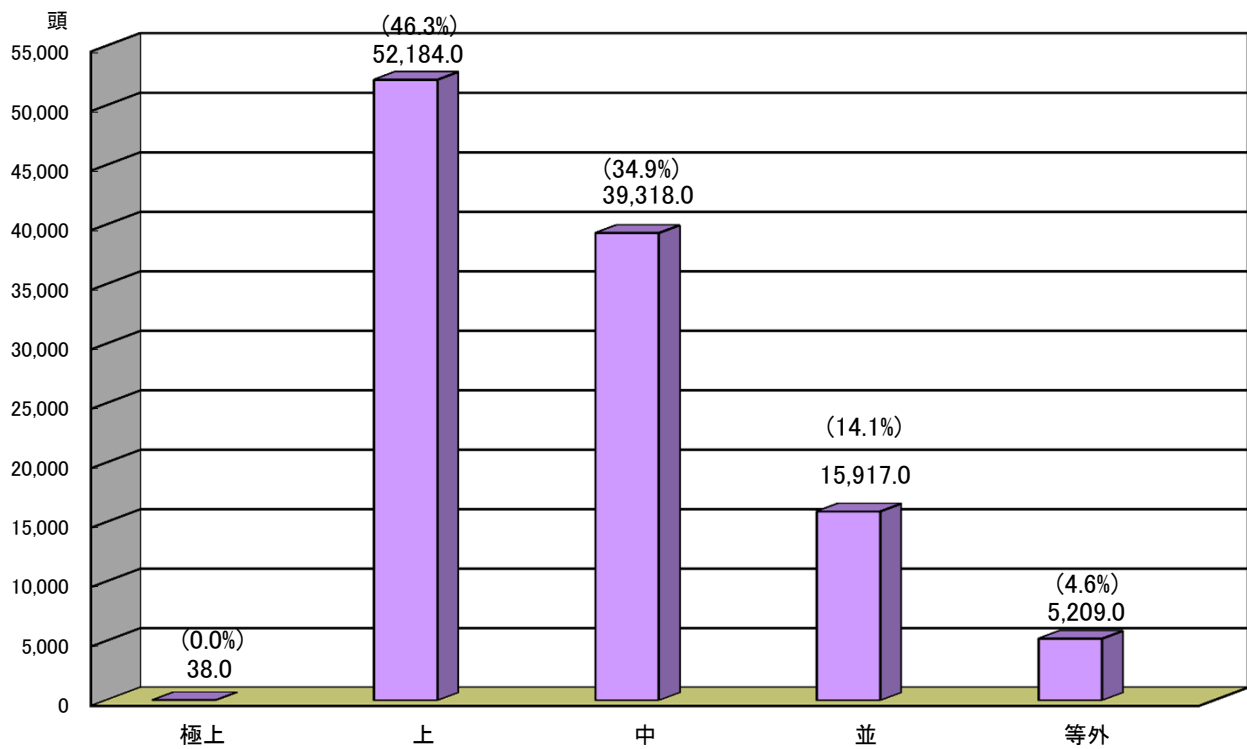
※ めん羊は除く

5. 平成25年度 規格別取扱頭数

(合計 24,203.0 頭)

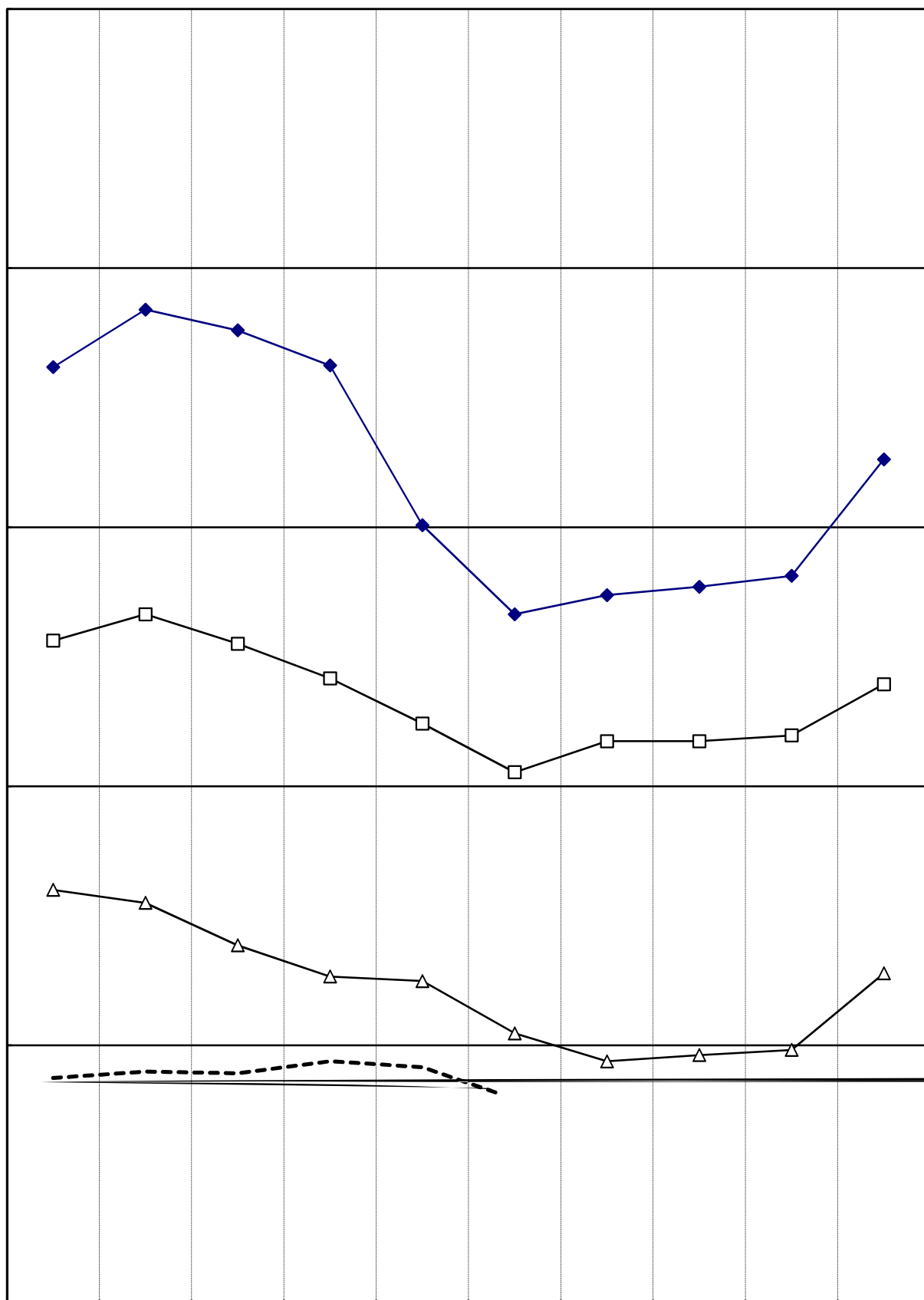


豚 (合計 112,666.0 頭)



()内は、構成比率

6. 年度別卸売価格



豚買付枝肉は含まれていない。

7. 平成25年度 月別卸売価格

