

第Ⅲ編 被害想定

7. 県民の生活支障、その他の調査

7. 県民の生活支障、その他の調査

2005

2005

2011

7.1 県民の生活支障の想定

7.1.1 県民の生活支障の想定の流れ

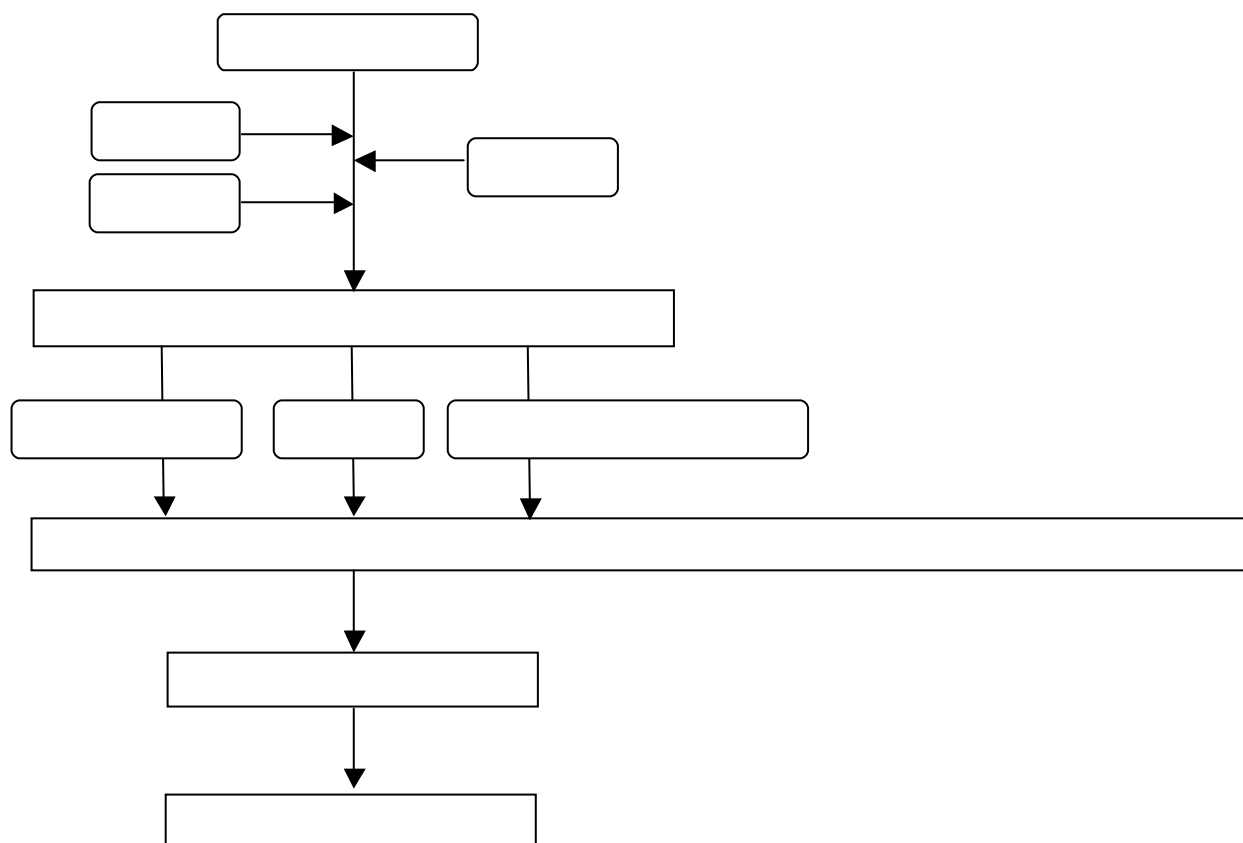


図 7.1-1 県民の生活支障の想定の流れ

7.1.2 県民の生活支障の想定手法

1)

--

2)

--

3)

--

4)

--

第Ⅲ編 被害想定

7. 県民の生活支障、その他の調査

5)



6)



7)



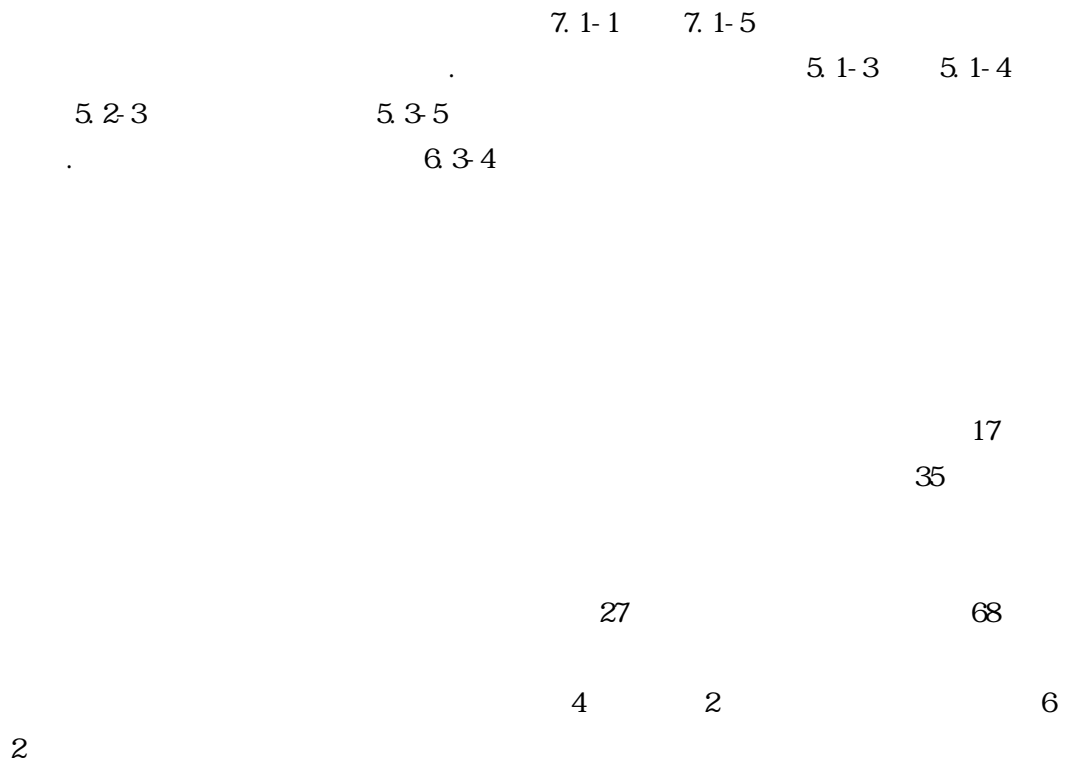
第Ⅲ編 被害想定  
7. 県民の生活支障、その他の調査


第Ⅲ編 被害想定

7. 県民の生活支障、その他の調査

1	×	1
		×
2	×	2
3	×	3
4	×	4
5	×	5
6	×	6
7	×	7
n		

7.1.3 県民の生活支障の想定結果



	31.0			68		
		22	9.9%			49
	22.3%		32	(14.5%)		

第Ⅲ編 被害想定

7. 県民の生活支障、その他の調査

	68	30.9	37	17.0%	31
	(14.2%)	48	21.7%		

					10.2
	2.5	3.2	4.2	1.3%	
		0.8%		3.8	(1.2%)

					4.8
	2.6	0.3	1.9	0.1%	
		0.2%		3.3	(0.2%)

第Ⅲ編 被害想定  
7. 県民の生活支障、その他の調査

	<p>4</p> <p>1</p> <p style="margin-left: 200px;">2</p>
--	--

	<p>38.8</p> <p>660      26.3%</p> <p>360      14.2%</p> <p>470      (18.7%)</p> <p>980</p> <p style="margin-left: 200px;">6.4.4</p>
--	---



第Ⅲ編 被害想定

7.県民の生活支障、その他の調査

表 7.1-1(1) 生活支障の想定結果【居住の制約】

			%		%		%		%		%		%
100	459,444	164,175	35.7%	172,333	37.5%	70,345	15.3%	9,120	2.0%	46,280	10.1%	11,654	2.5%
130	676,022	0	0.0%	0	0.0%	0	0.0%	19,421	2.9%	89,047	13.2%	29,560	4.4%
202	57,003	0	0.0%	0	0.0%	0	0.0%	0	0.0%	0	0.0%	0	0.0%
203	121,536	0	0.0%	0	0.0%	0	0.0%	0	0.0%	365	0.3%	3,719	3.1%
204	25,768	231	0.9%	3,586	13.9%	6,252	24.3%	3,700	14.4%	16,542	64.2%	10,530	40.9%
205	58,147	0	0.0%	1,536	2.6%	6,501	11.2%	10,172	17.5%	54,478	93.7%	58,147	100.0%
206	24,118	0	0.0%	3,612	15.0%	11,721	48.6%	596	2.5%	13,649	56.6%	24,118	100.0%
207	24,486	0	0.0%	0	0.0%	0	0.0%	0	0.0%	0	0.0%	0	0.0%
210	23,885	0	0.0%	0	0.0%	0	0.0%	0	0.0%	0	0.0%	1	0.0%
211	17,254	0	0.0%	0	0.0%	0	0.0%	0	0.0%	2	0.0%	9	0.1%
212	13,062	0	0.0%	0	0.0%	0	0.0%	0	0.0%	0	0.0%	0	0.0%
213	29,413	164	0.6%	11,262	38.3%	15,997	54.4%	0	0.0%	325	1.1%	1,309	4.4%
214	11,605	0	0.0%	0	0.0%	0	0.0%	0	0.0%	0	0.0%	155	1.3%
215	20,029	0	0.0%	2,299	11.5%	690	3.4%	3,221	16.1%	9,914	49.5%	2,301	11.5%
216	21,802	0	0.0%	0	0.0%	0	0.0%	0	0.0%	224	1.0%	3,302	15.1%
217	40,176	0	0.0%	0	0.0%	0	0.0%	0	0.0%	5,416	13.5%	10,542	26.2%
218	44,064	0	0.0%	0	0.0%	0	0.0%	309	0.7%	13,926	31.6%	16,399	37.2%
219	39,194	0	0.0%	0	0.0%	0	0.0%	902	2.3%	7,801	19.9%	8,899	22.7%
220	38,482	0	0.0%	0	0.0%	0	0.0%	38,482	100.0%	38,482	100.0%	18,148	47.2%
221	28,713	0	0.0%	0	0.0%	0	0.0%	197	0.7%	8,313	29.0%	13,387	46.6%
223	22,748	0	0.0%	0	0.0%	0	0.0%	10,300	45.3%	13,493	59.3%	4,484	19.7%
224	22,191	0	0.0%	0	0.0%	0	0.0%	22,191	100.0%	22,191	100.0%	10,158	45.8%
225	10,648	0	0.0%	0	0.0%	0	0.0%	0	0.0%	3	0.0%	604	5.7%
226	12,979	141	1.1%	2,392	18.4%	3,953	30.5%	10,744	82.8%	12,979	100.0%	12,979	100.0%
227	19,295	0	0.0%	0	0.0%	4	0.0%	2	0.0%	1,711	8.9%	5,547	28.7%
228	20,462	0	0.0%	0	0.0%	0	0.0%	1	0.0%	4,651	22.7%	12,876	62.9%
229	14,093	0	0.0%	0	0.0%	0	0.0%	0	0.0%	471	3.3%	1,672	11.9%
230	36,888	0	0.0%	0	0.0%	0	0.0%	1,687	4.6%	6,094	16.5%	668	1.8%
305	19,105	0	0.0%	0	0.0%	0	0.0%	0	0.0%	2,729	14.3%	3,050	16.0%
341	14,487	0	0.0%	0	0.0%	0	0.0%	688	4.7%	11,020	76.1%	12,621	87.1%
342	12,221	0	0.0%	0	0.0%	0	0.0%	1,476	12.1%	6,649	54.4%	5,170	42.3%
343	17,659	0	0.0%	0	0.0%	0	0.0%	564	3.2%	7,518	42.6%	5,074	28.7%
344	10,004	0	0.0%	0	0.0%	0	0.0%	1,809	18.1%	9,884	98.8%	8,992	89.9%
345	9,475	0	0.0%	0	0.0%	0	0.0%	1,772	18.7%	3,383	35.7%	317	3.3%
348	2,868	0	0.0%	0	0.0%	0	0.0%	490	17.1%	502	17.5%	493	17.2%
349	17,128	0	0.0%	0	0.0%	0	0.0%	1,161	6.8%	9,109	53.2%	5,035	29.4%
381	6,604	0	0.0%	0	0.0%	0	0.0%	625	9.5%	875	13.3%	125	1.9%
382	12,763	0	0.0%	897	7.0%	0	0.0%	1,494	11.7%	3,595	28.2%	598	4.7%
383	12,760	450	3.5%	1,564	12.3%	562	4.4%	10,721	84.0%	11,945	93.6%	3,362	26.3%
384	7,594	1,361	17.9%	3,854	50.8%	1,929	25.4%	7,594	100.0%	7,594	100.0%	5,328	70.2%
401	3,960	0	0.0%	107	2.7%	512	12.9%	808	20.4%	3,960	100.0%	3,960	100.0%
402	7,507	0	0.0%	546	7.3%	326	4.3%	2,947	39.3%	6,781	90.3%	2,731	36.4%
421	6,055	0	0.0%	0	0.0%	0	0.0%	0	0.0%	1,011	16.7%	3,649	60.3%
447	9,843	0	0.0%	0	0.0%	6	0.1%	19	0.2%	1,131	11.5%	2,871	29.2%
448	917	0	0.0%	0	0.0%	0	0.0%	0	0.0%	82	8.9%	537	58.6%
503	4,674	0	0.0%	0	0.0%	0	0.0%	0	0.0%	105	2.2%	647	13.8%
522	4,552	0	0.0%	0	0.0%	0	0.0%	0	0.0%	0	0.0%	0	0.0%
544	6,870	0	0.0%	0	0.0%	0	0.0%	0	0.0%	0	0.0%	10	0.1%
601	5,604	0	0.0%	1,862	33.2%	4,224	75.4%	123	2.2%	1,873	33.4%	3,365	60.1%
602	4,912	0	0.0%	0	0.0%	278	5.7%	0	0.0%	967	19.7%	3,453	70.3%
604	4,671	0	0.0%	846	18.1%	3,400	72.8%	338	7.2%	4,671	100.0%	4,671	100.0%
605	9,468	0	0.0%	0	0.0%	986	10.4%	0	0.0%	1,971	20.8%	5,071	53.6%
608	2,525	0	0.0%	473	18.7%	1,657	65.6%	0	0.0%	1,420	56.2%	2,525	100.0%
609	1,485	0	0.0%	63	4.2%	189	12.7%	0	0.0%	126	8.5%	300	20.3%
610	11,199	98	0.9%	3,246	29.0%	8,249	73.7%	785	7.0%	9,127	81.5%	11,199	100.0%
621	14,873	1,297	8.7%	5,053	34.0%	3,766	25.3%	0	0.0%	324	2.2%	649	4.4%
625	8,482	0	0.0%	899	10.6%	2,010	23.7%	0	0.0%	198	2.3%	599	7.1%
642	2,868	0	0.0%	0	0.0%	0	0.0%	0	0.0%	0	0.0%	0	0.0%
646	3,087	0	0.0%	0	0.0%	0	0.0%	0	0.0%	0	0.0%	0	0.0%
647	8,952	112	1.2%	1,688	18.9%	2,930	32.7%	0	0.0%	587	6.6%	1,732	20.0%
	2,198,679	168,014	7.6%	217,256	9.9%	143,477	6.5%	169,578	7.7%	490,070	22.3%	371,571	16.9%

第Ⅲ編 被害想定  
7. 県民の生活支障、その他の調査

表 7.1-1(2) 生活支障の想定結果【居住の制約】

			%		%		%		%		%		%		%
100	459,444	0	0.0%	914	0.2%	223	0.0%	0	0.0%	0	0.0%	0	0.0%	143,813	31.3%
130	676,022	307,499	45.5%	350,765	51.9%	174,308	25.8%	4,841	0.7%	1,093	0.2%	4	0.0%	133,725	19.8%
202	57,003	0	0.0%	1	0.0%	226	0.4%	11,197	19.6%	5,095	8.9%	14	0.0%	48,612	85.3%
203	121,536	4	0.0%	6,725	5.5%	38,349	31.6%	121,536	100.0%	121,536	100.0%	51,193	42.1%	85,680	70.5%
204	25,768	116	0.4%	694	2.7%	231	0.9%	0	0.0%	0	0.0%	0	0.0%	13,069	50.7%
205	58,147	690	1.2%	9,651	16.6%	10,790	18.6%	413	0.7%	3,837	6.6%	2,158	3.7%	27,810	47.8%
206	24,118	0	0.0%	1,440	6.0%	2,897	12.0%	0	0.0%	1,316	5.5%	1,678	7.0%	22,661	94.0%
207	24,486	0	0.0%	213	0.9%	850	3.5%	9,395	38.4%	2,877	11.7%	213	0.9%	24,486	100.0%
210	23,885	0	0.0%	1	0.0%	335	1.4%	7,836	32.8%	11,116	46.5%	5,369	22.5%	7,955	33.3%
211	17,254	0	0.0%	14	0.1%	678	3.9%	17,254	100.0%	10,833	62.8%	207	1.2%	14,081	81.6%
212	13,062	0	0.0%	0	0.0%	0	0.0%	1,621	12.4%	0	0.0%	0	0.0%	6,758	51.7%
213	29,413	0	0.0%	0	0.0%	0	0.0%	0	0.0%	0	0.0%	0	0.0%	19,322	65.7%
214	11,605	0	0.0%	0	0.0%	0	0.0%	0	0.0%	0	0.0%	152	1.3%	6,616	57.0%
215	20,029	0	0.0%	230	1.1%	0	0.0%	0	0.0%	0	0.0%	0	0.0%	12,048	60.2%
216	21,802	6	0.0%	6,717	30.8%	17,800	81.6%	21,802	100.0%	21,802	100.0%	6,538	30.0%	12,571	57.7%
217	40,176	6,136	15.3%	26,826	66.8%	39,842	99.2%	8,125	20.2%	7,771	19.3%	585	1.5%	12,633	31.4%
218	44,064	44,064	100.0%	44,064	100.0%	44,064	100.0%	9,587	21.8%	4,329	9.8%	0	0.0%	32,165	73.0%
219	39,194	16,947	43.2%	38,810	99.0%	38,810	99.0%	3,794	9.7%	2,709	6.9%	0	0.0%	12,156	31.0%
220	38,482	3,022	7.9%	3,288	8.5%	69	0.2%	0	0.0%	0	0.0%	0	0.0%	20,681	53.7%
221	28,713	12,225	42.6%	28,713	100.0%	28,713	100.0%	6,805	23.7%	6,056	21.1%	197	0.7%	15,037	52.4%
223	22,748	1,191	5.2%	1,972	8.7%	0	0.0%	0	0.0%	0	0.0%	0	0.0%	2,438	10.7%
224	22,191	2,902	13.1%	2,333	10.5%	155	0.7%	0	0.0%	0	0.0%	0	0.0%	8,933	40.3%
225	10,648	0	0.0%	15	0.1%	763	7.2%	3,359	31.5%	5,379	50.5%	5,502	51.7%	1,949	18.3%
226	12,979	956	7.4%	4,001	30.8%	2,209	17.0%	146	1.1%	601	4.6%	287	2.2%	11,504	88.6%
227	19,295	0	0.0%	311	1.6%	1,156	6.0%	22	0.1%	917	4.8%	669	3.5%	2,843	14.7%
228	20,462	544	2.7%	7,963	38.9%	17,856	87.3%	20,462	100.0%	20,462	100.0%	20,462	100.0%	20,462	100.0%
229	14,093	111	0.8%	1,917	13.6%	5,446	38.6%	14,093	100.0%	14,093	100.0%	4,194	29.8%	14,093	100.0%
230	36,888	36,888	100.0%	28,708	77.8%	4,406	11.9%	1,337	3.6%	1	0.0%	0	0.0%	36,727	99.6%
305	19,105	16,056	84.0%	19,105	100.0%	19,105	100.0%	3,211	16.8%	963	5.0%	0	0.0%	11,079	58.0%
341	14,487	8,841	61.0%	14,487	100.0%	14,487	100.0%	1,375	9.5%	1,719	11.9%	0	0.0%	10,330	71.3%
342	12,221	2,707	22.1%	6,899	56.5%	3,693	30.2%	0	0.0%	0	0.0%	0	0.0%	3,691	30.2%
343	17,659	11,844	67.1%	17,659	100.0%	15,975	90.5%	376	2.1%	188	1.1%	0	0.0%	7,141	40.4%
344	10,004	7,201	72.0%	10,004	100.0%	10,004	100.0%	792	7.9%	904	9.0%	0	0.0%	7,872	78.7%
345	9,475	1,637	17.3%	1,774	18.7%	3	0.0%	0	0.0%	0	0.0%	0	0.0%	735	7.8%
348	2,868	0	0.0%	492	17.2%	0	0.0%	0	0.0%	0	0.0%	0	0.0%	490	17.1%
349	17,128	9,681	56.5%	16,839	98.3%	9,099	53.1%	0	0.0%	0	0.0%	0	0.0%	6,194	36.2%
381	6,604	0	0.0%	0	0.0%	0	0.0%	0	0.0%	0	0.0%	0	0.0%	2,260	34.2%
382	12,763	0	0.0%	0	0.0%	0	0.0%	0	0.0%	0	0.0%	0	0.0%	7,488	58.7%
383	12,760	675	5.3%	1,231	9.6%	225	1.8%	0	0.0%	112	0.9%	0	0.0%	10,163	79.6%
384	7,594	1,247	16.4%	2,042	26.9%	680	9.0%	113	1.5%	340	4.5%	227	3.0%	7,594	100.0%
401	3,960	0	0.0%	207	5.2%	103	2.6%	0	0.0%	0	0.0%	0	0.0%	2,370	59.9%
402	7,507	1	0.0%	220	2.9%	0	0.0%	0	0.0%	0	0.0%	0	0.0%	3,277	43.7%
421	6,055	0	0.0%	100	1.7%	301	5.0%	0	0.0%	0	0.0%	0	0.0%	602	9.9%
447	9,843	217	2.2%	2,730	27.7%	5,588	56.8%	3,797	38.6%	5,472	55.6%	2,631	26.7%	3,968	40.3%
448	917	0	0.0%	0	0.0%	247	26.9%	41	4.5%	741	80.8%	917	100.0%	917	100.0%
503	4,674	0	0.0%	543	11.6%	2,419	51.8%	4,674	100.0%	4,674	100.0%	3,470	74.2%	3,144	67.3%
522	4,552	0	0.0%	0	0.0%	0	0.0%	4,288	94.2%	1,077	23.7%	0	0.0%	4,552	100.0%
544	6,870	0	0.0%	12	0.2%	81	1.2%	6,870	100.0%	6,870	100.0%	3,667	53.4%	6,870	100.0%
601	5,604	0	0.0%	124	2.2%	126	2.3%	0	0.0%	123	2.2%	124	2.2%	4,559	81.4%
602	4,912	0	0.0%	0	0.0%	414	8.4%	0	0.0%	552	11.2%	1,659	33.8%	4,912	100.0%
604	4,671	0	0.0%	508	10.9%	846	18.1%	0	0.0%	338	7.2%	169	3.6%	4,671	100.0%
605	9,468	0	0.0%	141	1.5%	845	8.9%	0	0.0%	563	5.9%	1,126	11.9%	5,635	59.5%
608	2,525	0	0.0%	118	4.7%	355	14.1%	0	0.0%	237	9.4%	473	18.7%	2,525	100.0%
609	1,485	0	0.0%	2	0.1%	63	4.2%	0	0.0%	3	0.2%	66	4.5%	692	46.6%
610	11,199	0	0.0%	784	7.0%	882	7.9%	0	0.0%	294	2.6%	196	1.8%	10,492	93.7%
621	14,873	0	0.0%	0	0.0%	0	0.0%	0	0.0%	0	0.0%	0	0.0%	3,929	26.4%
625	8,482	0	0.0%	0	0.0%	0	0.0%	0	0.0%	0	0.0%	0	0.0%	3,690	43.5%
642	2,868	0	0.0%	0	0.0%	0	0.0%	0	0.0%	0	0.0%	0	0.0%	2,868	100.0%
646	3,087	0	0.0%	0	0.0%	0	0.0%	0	0.0%	0	0.0%	0	0.0%	3,087	100.0%
647	8,952	0	0.0%	1	0.0%	110	1.2%	0	0.0%	108	1.2%	352	3.9%	8,884	99.2%
	2,198,679	508,167	23.1%	682,684	31.0%	535,542	24.4%	318,242	14.5%	287,118	13.1%	119,489	5.4%	951,421	43.3%

第Ⅲ編 被害想定

7.県民の生活支障、その他の調査

表 7.1-2(1) 生活支障の想定結果【食料・飲料水の制約】

			%		%		%		%		%		%
100	459,444	271,735	59.1%	246,416	53.6%	67,194	14.6%	8,399	1.8%	42,660	9.3%	11,052	2.4%
130	676,022	0	0.0%	0	0.0%	0	0.0%	19,083	2.8%	86,756	12.8%	28,807	4.3%
202	57,003	0	0.0%	0	0.0%	0	0.0%	0	0.0%	0	0.0%	0	0.0%
203	121,536	0	0.0%	0	0.0%	0	0.0%	0	0.0%	337	0.3%	3,198	2.6%
204	25,768	231	0.9%	3,581	13.9%	6,238	24.2%	3,696	14.3%	25,768	100.0%	10,512	40.8%
205	58,147	0	0.0%	1,504	2.6%	6,289	10.8%	9,980	17.2%	58,147	100.0%	58,147	100.0%
206	24,118	0	0.0%	3,571	14.8%	11,547	47.9%	595	2.5%	13,451	55.8%	24,118	100.0%
207	24,486	0	0.0%	0	0.0%	0	0.0%	0	0.0%	0	0.0%	0	0.0%
210	23,885	0	0.0%	0	0.0%	0	0.0%	0	0.0%	0	0.0%	0	0.0%
211	17,254	0	0.0%	0	0.0%	0	0.0%	0	0.0%	0	0.0%	0	0.0%
212	13,062	0	0.0%	0	0.0%	0	0.0%	0	0.0%	0	0.0%	0	0.0%
213	29,413	162	0.6%	11,193	38.1%	15,898	54.0%	0	0.0%	324	1.1%	1,298	4.4%
214	11,605	0	0.0%	0	0.0%	0	0.0%	0	0.0%	0	0.0%	142	1.2%
215	20,029	0	0.0%	2,299	11.5%	690	3.4%	3,219	16.1%	9,886	49.4%	2,299	11.5%
216	21,802	0	0.0%	0	0.0%	0	0.0%	0	0.0%	189	0.9%	3,208	14.7%
217	40,176	0	0.0%	0	0.0%	0	0.0%	0	0.0%	5,335	13.3%	10,289	25.6%
218	44,064	0	0.0%	0	0.0%	0	0.0%	309	0.7%	13,914	31.6%	16,388	37.2%
219	39,194	0	0.0%	0	0.0%	0	0.0%	902	2.3%	7,760	19.8%	8,843	22.6%
220	38,482	0	0.0%	0	0.0%	0	0.0%	38,482	100.0%	38,482	100.0%	18,100	47.0%
221	28,713	0	0.0%	0	0.0%	0	0.0%	186	0.6%	8,205	28.6%	13,240	46.1%
223	22,748	0	0.0%	0	0.0%	0	0.0%	9,932	43.7%	13,165	57.9%	4,157	18.3%
224	22,191	0	0.0%	0	0.0%	0	0.0%	22,191	100.0%	22,191	100.0%	10,149	45.7%
225	10,648	0	0.0%	0	0.0%	0	0.0%	0	0.0%	0	0.0%	0	0.0%
226	12,979	139	1.1%	2,371	18.3%	3,905	30.1%	10,599	81.7%	12,979	100.0%	12,979	100.0%
227	19,295	0	0.0%	0	0.0%	0	0.0%	0	0.0%	1,555	8.1%	5,333	27.6%
228	20,462	0	0.0%	0	0.0%	0	0.0%	0	0.0%	4,094	20.0%	12,282	60.0%
229	14,093	0	0.0%	0	0.0%	0	0.0%	0	0.0%	432	3.1%	1,404	10.0%
230	36,888	0	0.0%	0	0.0%	0	0.0%	1,610	4.4%	5,798	15.7%	644	1.7%
305	19,105	0	0.0%	0	0.0%	0	0.0%	0	0.0%	2,729	14.3%	3,050	16.0%
341	14,487	0	0.0%	0	0.0%	0	0.0%	688	4.7%	11,002	75.9%	12,607	87.0%
342	12,221	0	0.0%	0	0.0%	0	0.0%	1,476	12.1%	6,644	54.4%	5,167	42.3%
343	17,659	0	0.0%	0	0.0%	0	0.0%	564	3.2%	7,517	42.6%	5,074	28.7%
344	10,004	0	0.0%	0	0.0%	0	0.0%	1,797	18.0%	9,884	98.8%	8,985	89.8%
345	9,475	0	0.0%	0	0.0%	0	0.0%	1,744	18.4%	3,354	35.4%	268	2.8%
348	2,868	0	0.0%	0	0.0%	0	0.0%	489	17.1%	489	17.1%	489	17.1%
349	17,128	0	0.0%	0	0.0%	0	0.0%	1,161	6.8%	9,096	53.1%	5,032	29.4%
381	6,604	0	0.0%	0	0.0%	0	0.0%	625	9.5%	874	13.2%	125	1.9%
382	12,763	0	0.0%	897	7.0%	0	0.0%	1,494	11.7%	3,587	28.1%	598	4.7%
383	12,760	446	3.5%	1,562	12.2%	558	4.4%	10,714	84.0%	11,942	93.6%	3,348	26.2%
384	7,594	1,359	17.9%	3,852	50.7%	1,926	25.4%	7,594	100.0%	7,594	100.0%	5,324	70.1%
401	3,960	0	0.0%	98	2.5%	490	12.4%	784	19.8%	3,960	100.0%	3,960	100.0%
402	7,507	0	0.0%	537	7.2%	322	4.3%	2,902	38.7%	6,772	90.2%	2,687	35.8%
421	6,055	0	0.0%	0	0.0%	0	0.0%	0	0.0%	1,002	16.5%	3,607	59.6%
447	9,843	0	0.0%	0	0.0%	0	0.0%	0	0.0%	913	9.3%	2,435	24.7%
448	917	0	0.0%	0	0.0%	0	0.0%	0	0.0%	82	8.9%	533	58.2%
503	4,674	0	0.0%	0	0.0%	0	0.0%	0	0.0%	84	1.8%	505	10.8%
522	4,552	0	0.0%	0	0.0%	0	0.0%	0	0.0%	0	0.0%	0	0.0%
544	6,870	0	0.0%	0	0.0%	0	0.0%	0	0.0%	0	0.0%	0	0.0%
601	5,604	0	0.0%	1,826	32.6%	4,140	73.9%	122	2.2%	1,826	32.6%	3,288	58.7%
602	4,912	0	0.0%	0	0.0%	276	5.6%	0	0.0%	965	19.6%	3,445	70.1%
604	4,671	0	0.0%	846	18.1%	3,385	72.5%	338	7.2%	4,671	100.0%	4,671	100.0%
605	9,468	0	0.0%	0	0.0%	986	10.4%	0	0.0%	1,971	20.8%	5,069	53.5%
608	2,525	0	0.0%	473	18.7%	1,657	65.6%	0	0.0%	1,420	56.2%	2,525	100.0%
609	1,485	0	0.0%	59	4.0%	178	12.0%	0	0.0%	119	8.0%	356	23.9%
610	11,199	98	0.9%	3,234	28.9%	8,233	73.5%	784	7.0%	9,115	81.4%	11,199	100.0%
621	14,873	1,263	8.5%	4,893	32.9%	3,630	24.4%	0	0.0%	316	2.1%	631	4.2%
625	8,482	0	0.0%	893	10.5%	1,984	23.4%	0	0.0%	198	2.3%	595	7.0%
642	2,868	0	0.0%	0	0.0%	0	0.0%	0	0.0%	0	0.0%	0	0.0%
646	3,087	0	0.0%	0	0.0%	0	0.0%	0	0.0%	0	0.0%	0	0.0%
647	8,952	106	1.2%	1,478	16.5%	2,640	29.5%	0	0.0%	528	5.9%	1,584	17.7%
	2,198,679	374,566	17.0%	339,666	15.4%	137,920	6.3%	164,353	7.5%	477,345	21.7%	355,233	16.2%

第Ⅲ編 被害想定  
7. 県民の生活支障、その他の調査

表 7.1-2(2) 生活支障の想定結果【食料・飲料水の制約】

			%		%		%		%		%		%		%
100	459,444	0	0.0%	884	0.2%	221	0.0%	0	0.0%	0	0.0%	0	0.0%	136,157	29.6%
130	676,022	609,494	90.2%	676,021	100.0%	274,086	40.5%	4,355	0.6%	1,005	0.1%	0	0.0%	128,291	19.0%
202	57,003	0	0.0%	0	0.0%	178	0.3%	9,778	17.2%	4,267	7.5%	0	0.0%	47,824	83.9%
203	121,536	0	0.0%	6,227	5.1%	37,026	30.5%	121,536	100.0%	121,536	100.0%	49,649	40.9%	84,656	69.7%
204	25,768	116	0.4%	693	2.7%	231	0.9%	0	0.0%	0	0.0%	0	0.0%	25,768	100.0%
205	58,147	684	1.2%	9,433	16.2%	10,527	18.1%	410	0.7%	3,691	6.3%	2,051	3.5%	27,479	47.3%
206	24,118	0	0.0%	1,428	5.9%	2,857	11.8%	0	0.0%	1,309	5.4%	1,667	6.9%	22,617	93.8%
207	24,486	0	0.0%	213	0.9%	850	3.5%	9,351	38.2%	2,869	11.7%	213	0.9%	24,486	100.0%
210	23,885	0	0.0%	0	0.0%	281	1.2%	7,302	30.6%	10,392	43.5%	4,775	20.0%	7,443	31.2%
211	17,254	0	0.0%	0	0.0%	602	3.5%	17,254	100.0%	10,683	61.9%	150	0.9%	13,993	81.1%
212	13,062	0	0.0%	0	0.0%	0	0.0%	1,616	12.4%	0	0.0%	0	0.0%	6,711	51.4%
213	29,413	0	0.0%	0	0.0%	0	0.0%	0	0.0%	0	0.0%	0	0.0%	19,142	65.1%
214	11,605	0	0.0%	0	0.0%	0	0.0%	0	0.0%	0	0.0%	142	1.2%	6,373	54.9%
215	20,029	0	0.0%	230	1.1%	0	0.0%	0	0.0%	0	0.0%	0	0.0%	11,955	59.7%
216	21,802	0	0.0%	6,604	30.3%	17,737	81.4%	21,802	100.0%	21,802	100.0%	6,416	29.4%	12,454	57.1%
217	40,176	6,097	15.2%	40,176	100.0%	40,176	100.0%	8,003	19.9%	7,621	19.0%	572	1.4%	12,385	30.8%
218	44,064	44,064	100.0%	44,064	100.0%	44,064	100.0%	9,585	21.8%	4,329	9.8%	0	0.0%	32,157	73.0%
219	39,194	39,193	100.0%	39,193	100.0%	39,193	100.0%	3,790	9.7%	2,707	6.9%	0	0.0%	12,091	30.8%
220	38,482	2,983	7.8%	3,254	8.5%	68	0.2%	0	0.0%	0	0.0%	0	0.0%	20,608	53.6%
221	28,713	12,121	42.2%	28,713	100.0%	28,713	100.0%	6,713	23.4%	5,967	20.8%	186	0.6%	14,919	52.0%
223	22,748	1,155	5.1%	1,848	8.1%	0	0.0%	0	0.0%	0	0.0%	0	0.0%	2,310	10.2%
224	22,191	2,885	13.0%	2,318	10.4%	155	0.7%	0	0.0%	0	0.0%	0	0.0%	8,913	40.2%
225	10,648	0	0.0%	0	0.0%	0	0.0%	2,051	19.3%	4,102	38.5%	4,102	38.5%	0	0.0%
226	12,979	837	6.4%	3,765	29.0%	2,092	16.1%	139	1.1%	558	4.3%	279	2.1%	11,436	88.1%
227	19,265	0	0.0%	222	1.2%	1,000	5.2%	0	0.0%	778	4.0%	555	2.9%	2,666	13.8%
228	20,462	512	2.5%	7,335	35.8%	17,570	85.9%	20,462	100.0%	20,462	100.0%	20,462	100.0%	20,462	100.0%
229	14,093	108	0.8%	1,620	11.5%	4,859	34.5%	14,093	100.0%	14,093	100.0%	3,671	26.1%	14,093	100.0%
230	36,888	36,888	100.0%	28,344	76.8%	4,187	11.4%	1,288	3.5%	0	0.0%	0	0.0%	36,718	99.5%
305	19,105	16,054	84.0%	19,105	100.0%	19,105	100.0%	3,211	16.8%	963	5.0%	0	0.0%	11,077	58.0%
341	14,487	8,825	60.9%	14,487	100.0%	14,487	100.0%	1,375	9.5%	1,719	11.9%	0	0.0%	10,315	71.2%
342	12,221	2,707	22.1%	6,890	56.4%	3,691	30.2%	0	0.0%	0	0.0%	0	0.0%	3,691	30.2%
343	17,659	11,840	67.0%	17,659	100.0%	15,974	90.5%	376	2.1%	188	1.1%	0	0.0%	7,141	40.4%
344	10,004	7,188	71.9%	10,004	100.0%	10,004	100.0%	786	7.9%	899	9.0%	0	0.0%	7,862	78.6%
345	9,475	1,610	17.0%	1,744	18.4%	0	0.0%	0	0.0%	0	0.0%	0	0.0%	671	7.1%
348	2,868	0	0.0%	489	17.1%	0	0.0%	0	0.0%	0	0.0%	0	0.0%	489	17.1%
349	17,128	9,677	56.5%	16,838	98.3%	9,096	53.1%	0	0.0%	0	0.0%	0	0.0%	6,193	36.2%
381	6,604	0	0.0%	0	0.0%	0	0.0%	0	0.0%	0	0.0%	0	0.0%	2,248	34.0%
382	12,763	0	0.0%	0	0.0%	0	0.0%	0	0.0%	0	0.0%	0	0.0%	7,472	58.5%
383	12,760	670	5.2%	1,228	9.6%	223	1.7%	0	0.0%	112	0.9%	0	0.0%	10,156	79.6%
384	7,594	1,246	16.4%	2,039	26.9%	680	9.0%	113	1.5%	340	4.5%	227	3.0%	7,594	100.0%
401	3,960	0	0.0%	196	5.0%	98	2.5%	0	0.0%	0	0.0%	0	0.0%	2,353	59.4%
402	7,507	0	0.0%	215	2.9%	0	0.0%	0	0.0%	0	0.0%	0	0.0%	3,225	43.0%
421	6,055	0	0.0%	100	1.7%	301	5.0%	0	0.0%	0	0.0%	0	0.0%	601	9.9%
447	9,843	152	1.5%	2,282	23.2%	5,174	52.6%	3,348	34.0%	9,871	100.3%	2,282	23.2%	3,500	35.6%
448	917	0	0.0%	0	0.0%	246	26.8%	41	4.5%	738	80.5%	917	100.0%	917	100.0%
503	4,674	0	0.0%	421	9.0%	2,272	48.6%	4,674	100.0%	4,674	100.0%	3,365	72.0%	3,029	64.8%
522	4,552	0	0.0%	0	0.0%	0	0.0%	4,286	94.2%	1,072	23.5%	0	0.0%	4,552	100.0%
544	6,870	0	0.0%	0	0.0%	0	0.0%	6,870	100.0%	6,870	100.0%	3,595	52.3%	6,870	100.0%
601	5,604	0	0.0%	122	2.2%	122	2.2%	0	0.0%	122	2.2%	122	2.2%	4,506	80.4%
602	4,912	0	0.0%	0	0.0%	413	8.4%	0	0.0%	551	11.2%	1,654	33.7%	4,912	100.0%
604	4,671	0	0.0%	508	10.9%	846	18.1%	0	0.0%	338	7.2%	169	3.6%	4,671	100.0%
605	9,468	0	0.0%	141	1.5%	845	8.9%	0	0.0%	563	5.9%	1,126	11.9%	5,632	59.5%
608	2,525	0	0.0%	118	4.7%	355	14.1%	0	0.0%	237	9.4%	473	18.7%	2,525	100.0%
609	1,485	0	0.0%	0	0.0%	59	4.0%	0	0.0%	0	0.0%	59	4.0%	652	43.9%
610	11,199	0	0.0%	784	7.0%	882	7.9%	0	0.0%	294	2.6%	196	1.8%	10,487	93.6%
621	14,873	0	0.0%	0	0.0%	0	0.0%	0	0.0%	0	0.0%	0	0.0%	3,788	25.5%
625	8,482	0	0.0%	0	0.0%	0	0.0%	0	0.0%	0	0.0%	0	0.0%	3,571	42.1%
642	2,868	0	0.0%	0	0.0%	0	0.0%	0	0.0%	0	0.0%	0	0.0%	2,868	100.0%
646	3,087	0	0.0%	0	0.0%	0	0.0%	0	0.0%	0	0.0%	0	0.0%	3,087	100.0%
647	8,952	0	0.0%	0	0.0%	106	1.2%	0	0.0%	106	1.2%	317	3.5%	8,871	99.1%
	2,198,679	506,690	23.0%	679,970	30.9%	531,761	24.2%	311,863	14.2%	279,848	12.7%	113,961	5.2%	943,031	42.9%

第Ⅲ編 被害想定

7.県民の生活支障、その他の調査

表 7.1-3(1) 生活支障の想定結果【電気の制約】

			%		%		%		%		%		%
100	568,369	41,225	7.3%	41,551	7.3%	0	0.0%	0	0.0%	0	0.0%	0	0.0%
130	728,297	0	0.0%	0	0.0%	0	0.0%	0	0.0%	0	0.0%	0	0.0%
202	89,417	0	0.0%	0	0.0%	0	0.0%	0	0.0%	0	0.0%	0	0.0%
203	177,658	0	0.0%	0	0.0%	0	0.0%	0	0.0%	0	0.0%	0	0.0%
204	38,034	0	0.0%	0	0.0%	0	0.0%	0	0.0%	0	0.0%	0	0.0%
205	80,655	0	0.0%	0	0.0%	0	0.0%	0	0.0%	5,908	7.3%	6,674	8.3%
206	31,897	0	0.0%	0	0.0%	0	0.0%	0	0.0%	0	0.0%	2,662	8.3%
207	62,200	0	0.0%	0	0.0%	0	0.0%	0	0.0%	0	0.0%	0	0.0%
210	49,714	0	0.0%	0	0.0%	0	0.0%	0	0.0%	0	0.0%	0	0.0%
211	24,170	0	0.0%	0	0.0%	0	0.0%	0	0.0%	0	0.0%	0	0.0%
212	32,846	0	0.0%	0	0.0%	0	0.0%	0	0.0%	0	0.0%	0	0.0%
213	36,461	0	0.0%	0	0.0%	0	0.0%	0	0.0%	0	0.0%	0	0.0%
214	23,033	0	0.0%	0	0.0%	0	0.0%	0	0.0%	0	0.0%	0	0.0%
215	36,144	0	0.0%	0	0.0%	0	0.0%	0	0.0%	0	0.0%	0	0.0%
216	23,992	0	0.0%	0	0.0%	0	0.0%	0	0.0%	0	0.0%	0	0.0%
217	81,377	0	0.0%	0	0.0%	0	0.0%	0	0.0%	0	0.0%	0	0.0%
218	65,340	0	0.0%	0	0.0%	0	0.0%	0	0.0%	0	0.0%	0	0.0%
219	50,498	0	0.0%	0	0.0%	0	0.0%	0	0.0%	0	0.0%	0	0.0%
220	57,758	0	0.0%	0	0.0%	0	0.0%	5,285	9.2%	4,985	8.6%	0	0.0%
221	63,159	0	0.0%	0	0.0%	0	0.0%	0	0.0%	0	0.0%	0	0.0%
223	27,826	0	0.0%	0	0.0%	0	0.0%	1,976	7.1%	2,185	7.9%	0	0.0%
224	30,416	0	0.0%	0	0.0%	0	0.0%	2,755	9.1%	2,755	9.1%	0	0.0%
225	30,497	0	0.0%	0	0.0%	0	0.0%	0	0.0%	0	0.0%	2,113	6.9%
226	24,323	0	0.0%	0	0.0%	0	0.0%	1,970	8.1%	2,447	10.1%	2,379	9.8%
227	32,929	0	0.0%	0	0.0%	0	0.0%	0	0.0%	0	0.0%	0	0.0%
228	40,287	0	0.0%	0	0.0%	0	0.0%	0	0.0%	0	0.0%	3,109	7.7%
229	25,383	0	0.0%	0	0.0%	0	0.0%	0	0.0%	0	0.0%	0	0.0%
230	142,244	0	0.0%	0	0.0%	0	0.0%	0	0.0%	0	0.0%	0	0.0%
305	40,626	0	0.0%	0	0.0%	0	0.0%	0	0.0%	0	0.0%	0	0.0%
341	39,202	0	0.0%	0	0.0%	0	0.0%	0	0.0%	0	0.0%	2,891	7.4%
342	29,279	0	0.0%	0	0.0%	0	0.0%	0	0.0%	0	0.0%	0	0.0%
343	33,912	0	0.0%	0	0.0%	0	0.0%	0	0.0%	0	0.0%	0	0.0%
344	29,465	0	0.0%	0	0.0%	0	0.0%	0	0.0%	0	0.0%	0	0.0%
345	24,483	0	0.0%	0	0.0%	0	0.0%	0	0.0%	1,939	7.9%	0	0.0%
348	11,531	0	0.0%	0	0.0%	0	0.0%	0	0.0%	0	0.0%	0	0.0%
349	33,586	0	0.0%	0	0.0%	0	0.0%	0	0.0%	0	0.0%	0	0.0%
381	15,322	0	0.0%	0	0.0%	0	0.0%	0	0.0%	0	0.0%	0	0.0%
382	21,561	0	0.0%	0	0.0%	0	0.0%	0	0.0%	0	0.0%	0	0.0%
383	25,850	0	0.0%	0	0.0%	0	0.0%	0	0.0%	0	0.0%	0	0.0%
384	19,753	0	0.0%	0	0.0%	0	0.0%	1,439	7.3%	1,668	8.4%	0	0.0%
401	5,897	0	0.0%	0	0.0%	0	0.0%	0	0.0%	507	8.6%	507	8.6%
402	13,841	0	0.0%	0	0.0%	0	0.0%	0	0.0%	1,087	7.9%	0	0.0%
421	9,322	0	0.0%	0	0.0%	0	0.0%	0	0.0%	0	0.0%	0	0.0%
447	16,593	0	0.0%	0	0.0%	0	0.0%	0	0.0%	1,139	6.9%	1,452	8.7%
448	2,749	0	0.0%	0	0.0%	0	0.0%	0	0.0%	0	0.0%	0	0.0%
503	8,380	0	0.0%	0	0.0%	0	0.0%	0	0.0%	0	0.0%	0	0.0%
522	8,373	0	0.0%	0	0.0%	0	0.0%	0	0.0%	0	0.0%	0	0.0%
544	10,743	0	0.0%	0	0.0%	0	0.0%	0	0.0%	0	0.0%	0	0.0%
601	10,798	0	0.0%	0	0.0%	0	0.0%	0	0.0%	0	0.0%	0	0.0%
602	10,199	0	0.0%	0	0.0%	0	0.0%	0	0.0%	0	0.0%	0	0.0%
604	6,827	0	0.0%	0	0.0%	0	0.0%	0	0.0%	528	7.7%	528	7.7%
605	13,206	0	0.0%	0	0.0%	0	0.0%	0	0.0%	0	0.0%	0	0.0%
608	4,082	0	0.0%	0	0.0%	0	0.0%	0	0.0%	0	0.0%	298	7.3%
609	2,810	0	0.0%	0	0.0%	0	0.0%	0	0.0%	0	0.0%	0	0.0%
610	14,183	0	0.0%	0	0.0%	0	0.0%	0	0.0%	0	0.0%	1,015	7.2%
621	16,188	0	0.0%	1,140	7.0%	0	0.0%	0	0.0%	0	0.0%	0	0.0%
625	18,206	0	0.0%	0	0.0%	0	0.0%	0	0.0%	0	0.0%	0	0.0%
642	5,597	0	0.0%	0	0.0%	0	0.0%	0	0.0%	0	0.0%	0	0.0%
646	8,158	0	0.0%	0	0.0%	0	0.0%	0	0.0%	0	0.0%	0	0.0%
647	15,357	0	0.0%	0	0.0%	0	0.0%	0	0.0%	0	0.0%	0	0.0%
	3,201,000	41,225	1.3%	42,691	1.3%	0	0.0%	13,425	0.4%	25,138	0.8%	23,628	0.7%

第Ⅲ編 被害想定  
7. 県民の生活支障、その他の調査

表 7.1-3(2) 生活支障の想定結果【電気の制約】

			%		%		%		%		%		%
100	568,369	0	0.0%	0	0.0%	0	0.0%	0	0.0%	0	0.0%	0	0.0%
130	728,297	58,307	8.0%	60,761	8.3%	0	0.0%	0	0.0%	0	0.0%	0	0.0%
202	89,417	0	0.0%	0	0.0%	0	0.0%	0	0.0%	0	0.0%	0	0.0%
203	177,668	0	0.0%	0	0.0%	0	0.0%	19,828	11.2%	18,339	10.3%	14,206	8.0%
204	38,034	0	0.0%	0	0.0%	0	0.0%	0	0.0%	0	0.0%	0	0.0%
205	80,655	0	0.0%	0	0.0%	0	0.0%	0	0.0%	0	0.0%	0	0.0%
206	31,897	0	0.0%	0	0.0%	0	0.0%	0	0.0%	0	0.0%	0	0.0%
207	62,200	0	0.0%	0	0.0%	0	0.0%	0	0.0%	0	0.0%	0	0.0%
210	49,714	0	0.0%	0	0.0%	0	0.0%	0	0.0%	0	0.0%	0	0.0%
211	24,170	0	0.0%	0	0.0%	0	0.0%	2,106	8.7%	1,652	6.8%	0	0.0%
212	32,846	0	0.0%	0	0.0%	0	0.0%	0	0.0%	0	0.0%	0	0.0%
213	36,461	0	0.0%	0	0.0%	0	0.0%	0	0.0%	0	0.0%	0	0.0%
214	23,083	0	0.0%	0	0.0%	0	0.0%	0	0.0%	0	0.0%	0	0.0%
215	36,144	0	0.0%	0	0.0%	0	0.0%	0	0.0%	0	0.0%	0	0.0%
216	23,992	0	0.0%	0	0.0%	2,137	8.9%	2,239	9.3%	2,239	9.3%	0	0.0%
217	81,377	0	0.0%	6,737	8.3%	8,276	10.2%	0	0.0%	0	0.0%	0	0.0%
218	65,340	0	0.0%	5,785	8.9%	5,785	8.9%	0	0.0%	0	0.0%	0	0.0%
219	50,498	3,700	7.3%	5,589	11.1%	5,589	11.1%	0	0.0%	0	0.0%	0	0.0%
220	57,758	0	0.0%	0	0.0%	0	0.0%	0	0.0%	0	0.0%	0	0.0%
221	63,159	0	0.0%	6,998	11.1%	7,566	12.0%	0	0.0%	0	0.0%	0	0.0%
223	27,826	0	0.0%	0	0.0%	0	0.0%	0	0.0%	0	0.0%	0	0.0%
224	30,416	0	0.0%	0	0.0%	0	0.0%	0	0.0%	0	0.0%	0	0.0%
225	30,497	0	0.0%	0	0.0%	2,113	6.9%	3,010	9.9%	3,711	12.2%	3,775	12.4%
226	24,323	0	0.0%	0	0.0%	0	0.0%	0	0.0%	0	0.0%	0	0.0%
227	32,929	0	0.0%	0	0.0%	0	0.0%	0	0.0%	0	0.0%	0	0.0%
228	40,287	0	0.0%	0	0.0%	3,536	8.8%	4,111	10.2%	4,507	11.2%	4,445	11.0%
229	25,383	0	0.0%	0	0.0%	0	0.0%	2,661	10.5%	2,394	9.4%	0	0.0%
230	142,244	11,552	8.1%	0	0.0%	0	0.0%	0	0.0%	0	0.0%	0	0.0%
305	40,626	0	0.0%	3,173	7.8%	2,869	7.1%	0	0.0%	0	0.0%	0	0.0%
341	39,202	0	0.0%	3,685	9.4%	3,685	9.4%	0	0.0%	0	0.0%	0	0.0%
342	29,279	0	0.0%	0	0.0%	0	0.0%	0	0.0%	0	0.0%	0	0.0%
343	33,912	0	0.0%	2,650	7.8%	0	0.0%	0	0.0%	0	0.0%	0	0.0%
344	29,465	0	0.0%	2,693	9.1%	2,336	7.9%	0	0.0%	0	0.0%	0	0.0%
345	24,483	0	0.0%	0	0.0%	0	0.0%	0	0.0%	0	0.0%	0	0.0%
348	11,531	0	0.0%	0	0.0%	0	0.0%	0	0.0%	0	0.0%	0	0.0%
349	33,586	0	0.0%	2,792	8.3%	0	0.0%	0	0.0%	0	0.0%	0	0.0%
381	15,322	0	0.0%	0	0.0%	0	0.0%	0	0.0%	0	0.0%	0	0.0%
382	21,561	0	0.0%	0	0.0%	0	0.0%	0	0.0%	0	0.0%	0	0.0%
383	25,850	0	0.0%	0	0.0%	0	0.0%	0	0.0%	0	0.0%	0	0.0%
384	19,753	0	0.0%	0	0.0%	0	0.0%	0	0.0%	0	0.0%	0	0.0%
401	5,897	0	0.0%	0	0.0%	0	0.0%	0	0.0%	0	0.0%	0	0.0%
402	13,841	0	0.0%	0	0.0%	0	0.0%	0	0.0%	0	0.0%	0	0.0%
421	9,322	0	0.0%	0	0.0%	0	0.0%	0	0.0%	0	0.0%	0	0.0%
447	16,593	0	0.0%	1,362	8.2%	1,736	10.5%	1,605	9.7%	1,673	10.1%	1,532	9.2%
448	2,749	0	0.0%	0	0.0%	0	0.0%	0	0.0%	0	0.0%	0	0.0%
503	8,380	0	0.0%	0	0.0%	622	7.4%	857	10.2%	857	10.2%	793	9.5%
522	8,373	0	0.0%	0	0.0%	0	0.0%	636	7.6%	0	0.0%	0	0.0%
544	10,743	0	0.0%	0	0.0%	0	0.0%	1,133	10.5%	1,063	9.9%	0	0.0%
601	10,798	0	0.0%	0	0.0%	0	0.0%	0	0.0%	0	0.0%	0	0.0%
602	10,199	0	0.0%	0	0.0%	0	0.0%	0	0.0%	0	0.0%	0	0.0%
604	6,827	0	0.0%	0	0.0%	0	0.0%	0	0.0%	0	0.0%	0	0.0%
605	13,206	0	0.0%	0	0.0%	0	0.0%	0	0.0%	0	0.0%	0	0.0%
608	4,082	0	0.0%	0	0.0%	0	0.0%	0	0.0%	0	0.0%	0	0.0%
609	2,810	0	0.0%	0	0.0%	0	0.0%	0	0.0%	0	0.0%	0	0.0%
610	14,183	0	0.0%	0	0.0%	0	0.0%	0	0.0%	0	0.0%	0	0.0%
621	16,188	0	0.0%	0	0.0%	0	0.0%	0	0.0%	0	0.0%	0	0.0%
625	18,206	0	0.0%	0	0.0%	0	0.0%	0	0.0%	0	0.0%	0	0.0%
642	5,597	0	0.0%	0	0.0%	0	0.0%	0	0.0%	0	0.0%	0	0.0%
646	8,158	0	0.0%	0	0.0%	0	0.0%	0	0.0%	0	0.0%	0	0.0%
647	15,357	0	0.0%	0	0.0%	0	0.0%	0	0.0%	0	0.0%	0	0.0%
	3,201,000	73,559	2.3%	102,225	3.2%	46,250	1.4%	38,186	1.2%	36,435	1.1%	24,751	0.8%

第Ⅲ編 被害想定

7.県民の生活支障、その他の調査

表 7.1-4(1) 生活支障の想定結果【情報通信の制約】

			%		%		%		%		%
100	276,792	1,752	0.6%	1,804	0.7%	0	0.0%	0	0.0%	0	0.0%
130	205,234	0	0.0%	0	0.0%	0	0.0%	0	0.0%	0	0.0%
202	28,567	0	0.0%	0	0.0%	0	0.0%	0	0.0%	0	0.0%
203	68,460	0	0.0%	0	0.0%	0	0.0%	0	0.0%	0	0.0%
204	21,642	0	0.0%	0	0.0%	0	0.0%	0	0.0%	0	0.0%
205	45,895	0	0.0%	0	0.0%	0	0.0%	0	0.0%	312	0.7%
206	17,544	0	0.0%	0	0.0%	0	0.0%	0	0.0%	0	0.0%
207	19,872	0	0.0%	0	0.0%	0	0.0%	0	0.0%	0	0.0%
210	26,505	0	0.0%	0	0.0%	0	0.0%	0	0.0%	0	0.0%
211	12,886	0	0.0%	0	0.0%	0	0.0%	0	0.0%	0	0.0%
212	12,657	0	0.0%	0	0.0%	0	0.0%	0	0.0%	0	0.0%
213	33,257	0	0.0%	0	0.0%	0	0.0%	0	0.0%	0	0.0%
214	18,599	0	0.0%	0	0.0%	0	0.0%	0	0.0%	0	0.0%
215	22,417	0	0.0%	0	0.0%	0	0.0%	0	0.0%	0	0.0%
216	12,812	0	0.0%	0	0.0%	0	0.0%	0	0.0%	0	0.0%
217	31,273	0	0.0%	0	0.0%	0	0.0%	0	0.0%	0	0.0%
218	25,110	0	0.0%	0	0.0%	0	0.0%	0	0.0%	0	0.0%
219	19,407	0	0.0%	0	0.0%	0	0.0%	0	0.0%	0	0.0%
220	44,064	0	0.0%	0	0.0%	0	0.0%	572	1.3%	505	1.1%
221	24,272	0	0.0%	0	0.0%	0	0.0%	0	0.0%	0	0.0%
223	21,229	0	0.0%	0	0.0%	0	0.0%	136	0.6%	204	1.0%
224	23,205	0	0.0%	0	0.0%	0	0.0%	320	1.4%	288	1.2%
225	11,752	0	0.0%	0	0.0%	0	0.0%	0	0.0%	0	0.0%
226	13,840	0	0.0%	0	0.0%	0	0.0%	134	1.0%	242	1.7%
227	18,738	0	0.0%	0	0.0%	0	0.0%	0	0.0%	0	0.0%
228	21,514	0	0.0%	0	0.0%	0	0.0%	0	0.0%	0	0.0%
229	8,109	0	0.0%	0	0.0%	0	0.0%	0	0.0%	0	0.0%
230	43,465	0	0.0%	0	0.0%	0	0.0%	0	0.0%	0	0.0%
305	15,613	0	0.0%	0	0.0%	0	0.0%	0	0.0%	0	0.0%
341	13,762	0	0.0%	0	0.0%	0	0.0%	0	0.0%	87	0.6%
342	10,279	0	0.0%	0	0.0%	0	0.0%	0	0.0%	0	0.0%
343	18,599	0	0.0%	0	0.0%	0	0.0%	0	0.0%	0	0.0%
344	22,417	0	0.0%	0	0.0%	0	0.0%	0	0.0%	0	0.0%
345	12,812	0	0.0%	0	0.0%	0	0.0%	0	0.0%	99	0.8%
348	31,273	0	0.0%	0	0.0%	0	0.0%	0	0.0%	0	0.0%
349	25,110	0	0.0%	0	0.0%	0	0.0%	0	0.0%	0	0.0%
381	19,407	0	0.0%	0	0.0%	0	0.0%	0	0.0%	0	0.0%
382	44,064	0	0.0%	0	0.0%	0	0.0%	0	0.0%	0	0.0%
383	24,272	0	0.0%	0	0.0%	0	0.0%	144	0.6%	144	0.6%
384	21,229	0	0.0%	0	0.0%	0	0.0%	0	0.0%	248	1.2%
401	23,205	0	0.0%	0	0.0%	0	0.0%	0	0.0%	188	0.8%
402	11,752	0	0.0%	0	0.0%	0	0.0%	0	0.0%	98	0.8%
421	13,840	0	0.0%	0	0.0%	0	0.0%	0	0.0%	0	0.0%
447	18,738	0	0.0%	0	0.0%	0	0.0%	0	0.0%	0	0.0%
448	21,514	0	0.0%	0	0.0%	0	0.0%	0	0.0%	0	0.0%
503	8,109	0	0.0%	0	0.0%	0	0.0%	0	0.0%	0	0.0%
522	43,465	0	0.0%	0	0.0%	0	0.0%	0	0.0%	0	0.0%
544	15,613	0	0.0%	0	0.0%	0	0.0%	0	0.0%	0	0.0%
601	13,762	0	0.0%	88	0.6%	88	0.6%	0	0.0%	88	0.6%
602	10,279	0	0.0%	0	0.0%	0	0.0%	0	0.0%	0	0.0%
604	11,905	0	0.0%	0	0.0%	0	0.0%	0	0.0%	129	1.1%
605	10,344	0	0.0%	0	0.0%	0	0.0%	0	0.0%	0	0.0%
608	8,595	0	0.0%	0	0.0%	0	0.0%	0	0.0%	0	0.0%
609	4,048	0	0.0%	0	0.0%	0	0.0%	0	0.0%	0	0.0%
610	11,790	0	0.0%	0	0.0%	0	0.0%	0	0.0%	0	0.0%
621	9,503	0	0.0%	0	0.0%	0	0.0%	0	0.0%	0	0.0%
625	13,372	0	0.0%	0	0.0%	0	0.0%	0	0.0%	0	0.0%
642	16,033	0	0.0%	0	0.0%	0	0.0%	0	0.0%	0	0.0%
646	12,251	0	0.0%	0	0.0%	0	0.0%	0	0.0%	0	0.0%
647	15,271	0	0.0%	0	0.0%	0	0.0%	0	0.0%	0	0.0%
	1,684,344	1,752	0.1%	1,891	0.1%	88	0.0%	1,307	0.1%	2,632	0.2%
										1,965	0.1%

第Ⅲ編 被害想定  
7. 県民の生活支障、その他の調査

表 7.1-4(2) 生活支障の想定結果【情報通信の制約】

		%		%		%		%		%		%	
100	276,792	0	0.0%	0	0.0%	0	0.0%	0	0.0%	0	0.0%	0	0.0%
130	205,234	1,770	0.9%	2,050	1.0%	0	0.0%	0	0.0%	0	0.0%	0	0.0%
202	28,567	0	0.0%	0	0.0%	0	0.0%	0	0.0%	0	0.0%	327	1.1%
203	68,460	0	0.0%	0	0.0%	0	0.0%	1,537	2.2%	1,235	1.8%	604	0.9%
204	21,642	0	0.0%	0	0.0%	0	0.0%	0	0.0%	0	0.0%	0	0.0%
205	45,895	0	0.0%	0	0.0%	0	0.0%	0	0.0%	0	0.0%	0	0.0%
206	17,544	0	0.0%	0	0.0%	0	0.0%	0	0.0%	0	0.0%	135	0.8%
207	19,872	0	0.0%	0	0.0%	0	0.0%	0	0.0%	0	0.0%	141	0.7%
210	26,505	0	0.0%	0	0.0%	0	0.0%	0	0.0%	0	0.0%	0	0.0%
211	12,886	0	0.0%	0	0.0%	0	0.0%	143	1.1%	86	0.7%	0	0.0%
212	12,657	0	0.0%	0	0.0%	0	0.0%	0	0.0%	0	0.0%	0	0.0%
213	36,257	0	0.0%	0	0.0%	0	0.0%	0	0.0%	0	0.0%	0	0.0%
214	18,599	0	0.0%	0	0.0%	0	0.0%	0	0.0%	0	0.0%	0	0.0%
215	22,417	0	0.0%	0	0.0%	0	0.0%	0	0.0%	0	0.0%	0	0.0%
216	12,812	0	0.0%	0	0.0%	149	1.2%	170	1.3%	170	1.3%	0	0.0%
217	31,273	0	0.0%	314	1.0%	534	1.7%	0	0.0%	0	0.0%	0	0.0%
218	25,110	0	0.0%	305	1.2%	305	1.2%	0	0.0%	0	0.0%	0	0.0%
219	19,407	137	0.7%	446	2.3%	412	2.1%	0	0.0%	0	0.0%	0	0.0%
220	44,064	0	0.0%	0	0.0%	0	0.0%	0	0.0%	0	0.0%	0	0.0%
221	24,272	0	0.0%	513	2.1%	700	2.9%	0	0.0%	0	0.0%	140	0.6%
223	21,229	0	0.0%	0	0.0%	0	0.0%	0	0.0%	0	0.0%	0	0.0%
224	23,205	0	0.0%	0	0.0%	0	0.0%	0	0.0%	0	0.0%	0	0.0%
225	11,752	0	0.0%	0	0.0%	0	0.0%	190	1.6%	338	2.9%	359	3.1%
226	13,840	0	0.0%	0	0.0%	0	0.0%	0	0.0%	0	0.0%	0	0.0%
227	18,738	0	0.0%	0	0.0%	0	0.0%	0	0.0%	0	0.0%	0	0.0%
228	21,514	0	0.0%	0	0.0%	239	1.1%	368	1.7%	479	2.2%	460	2.1%
229	8,109	0	0.0%	0	0.0%	0	0.0%	152	1.9%	114	1.4%	0	0.0%
230	43,465	382	0.9%	0	0.0%	0	0.0%	0	0.0%	0	0.0%	280	0.6%
305	15,613	0	0.0%	133	0.8%	99	0.6%	0	0.0%	0	0.0%	0	0.0%
341	13,762	0	0.0%	174	1.3%	174	1.3%	0	0.0%	0	0.0%	0	0.0%
342	10,279	0	0.0%	0	0.0%	0	0.0%	0	0.0%	0	0.0%	0	0.0%
343	18,599	0	0.0%	139	0.7%	0	0.0%	0	0.0%	0	0.0%	0	0.0%
344	22,417	0	0.0%	262	1.2%	175	0.8%	0	0.0%	0	0.0%	0	0.0%
345	12,812	0	0.0%	0	0.0%	0	0.0%	0	0.0%	0	0.0%	0	0.0%
348	31,273	0	0.0%	0	0.0%	0	0.0%	0	0.0%	0	0.0%	0	0.0%
349	25,110	0	0.0%	224	0.9%	0	0.0%	0	0.0%	0	0.0%	0	0.0%
381	19,407	0	0.0%	0	0.0%	0	0.0%	0	0.0%	0	0.0%	0	0.0%
382	44,064	0	0.0%	0	0.0%	0	0.0%	0	0.0%	0	0.0%	0	0.0%
383	24,272	0	0.0%	0	0.0%	0	0.0%	0	0.0%	0	0.0%	0	0.0%
384	21,229	0	0.0%	0	0.0%	0	0.0%	0	0.0%	0	0.0%	165	0.8%
401	23,205	0	0.0%	0	0.0%	0	0.0%	0	0.0%	0	0.0%	0	0.0%
402	11,752	0	0.0%	0	0.0%	0	0.0%	0	0.0%	0	0.0%	0	0.0%
421	13,840	0	0.0%	0	0.0%	0	0.0%	0	0.0%	0	0.0%	0	0.0%
447	18,738	0	0.0%	207	1.1%	344	1.8%	275	1.5%	310	1.7%	241	1.3%
448	21,514	0	0.0%	0	0.0%	0	0.0%	0	0.0%	0	0.0%	0	0.0%
503	8,109	0	0.0%	0	0.0%	56	0.7%	140	1.7%	168	2.1%	112	1.4%
522	43,465	0	0.0%	0	0.0%	0	0.0%	0	0.0%	0	0.0%	0	0.0%
544	15,613	0	0.0%	0	0.0%	0	0.0%	299	1.9%	240	1.5%	0	0.0%
601	13,762	0	0.0%	0	0.0%	0	0.0%	0	0.0%	0	0.0%	88	0.6%
602	10,279	0	0.0%	0	0.0%	0	0.0%	0	0.0%	0	0.0%	0	0.0%
604	11,905	0	0.0%	0	0.0%	0	0.0%	0	0.0%	0	0.0%	0	0.0%
605	10,344	0	0.0%	0	0.0%	0	0.0%	0	0.0%	0	0.0%	0	0.0%
608	8,595	0	0.0%	0	0.0%	0	0.0%	0	0.0%	0	0.0%	79	0.9%
609	4,048	0	0.0%	0	0.0%	0	0.0%	0	0.0%	0	0.0%	50	1.2%
610	11,790	0	0.0%	0	0.0%	0	0.0%	0	0.0%	0	0.0%	68	0.6%
621	9,503	0	0.0%	0	0.0%	0	0.0%	0	0.0%	0	0.0%	0	0.0%
625	13,372	0	0.0%	0	0.0%	0	0.0%	0	0.0%	0	0.0%	0	0.0%
642	16,033	0	0.0%	0	0.0%	0	0.0%	0	0.0%	0	0.0%	167	1.0%
646	12,251	0	0.0%	0	0.0%	0	0.0%	0	0.0%	0	0.0%	118	1.0%
647	15,271	0	0.0%	0	0.0%	0	0.0%	0	0.0%	0	0.0%	190	1.2%
	1,684,344	2,290	0.1%	4,767	0.3%	3,188	0.2%	3,274	0.2%	3,138	0.2%	1,776	0.1%



被害想定

の生活支障、その他の調査

表 7.1-5(1) 生活支障の想定結果【教育の制約】

			%		%		%		%		%
00	200	1	0.7%	1	0.7%	0	0.2%	0	0.0%	0	0.1%
01	225	0	0.0%	0	0.0%	0	0.0%	0	0.0%	0	0.1%
02	34	0	0.0%	0	0.0%	0	0.0%	0	0.0%	0	0.0%
03	64	0	0.0%	0	0.0%	0	0.0%	0	0.0%	0	0.1%
04	15	0	0.0%	0	0.0%	0	0.0%	0	0.0%	0	0.0%
05	35	0	0.0%	0	0.0%	0	0.1%	0	0.1%	0	0.3%
06	17	0	0.0%	0	0.0%	0	0.3%	0	0.0%	0	0.4%
07	25	0	0.0%	0	0.0%	0	0.0%	0	0.0%	0	0.0%
08	0	0	0.0%	0	0.0%	0	0.0%	0	0.0%	0	0.0%
09	0	0	0.0%	0	0.0%	0	0.0%	0	0.0%	0	0.0%
10	0	0	0.0%	0	0.0%	0	0.0%	0	0.0%	0	0.0%
11	0	0	0.0%	0	0.0%	0	0.0%	0	0.0%	0	0.0%
12	0	0	0.0%	0	0.0%	0	0.0%	0	0.0%	0	0.0%
13	0	0	0.0%	0	0.1%	0	0.2%	0	0.0%	0	0.0%
14	0	0	0.0%	0	0.0%	0	0.0%	0	0.0%	0	0.0%
15	0	0	0.0%	0	0.0%	0	0.0%	0	0.0%	0	0.0%
16	0	0	0.0%	0	0.0%	0	0.0%	0	0.0%	0	0.1%
17	17	0	0.0%	0	0.0%	0	0.0%	0	0.0%	0	0.2%
18	18	0	0.0%	0	0.0%	0	0.0%	0	0.0%	0	0.0%
19	15	0	0.0%	0	0.0%	0	0.0%	0	0.1%	0	0.4%
20	22	0	0.0%	0	0.0%	0	0.0%	0	0.3%	0	0.3%
21	13	0	0.0%	0	0.0%	0	0.0%	0	0.0%	0	0.1%
22	11	0	0.0%	0	0.0%	0	0.0%	0	0.5%	0	0.6%
23	11	0	0.0%	0	0.0%	0	0.0%	0	0.5%	0	0.6%
24	10	0	0.0%	0	0.0%	0	0.0%	0	0.7%	0	0.7%
25	12	0	0.0%	0	0.0%	0	0.0%	0	0.0%	0	1.3%
26	13	0	0.0%	0	0.0%	0	0.0%	0	0.6%	0	0.9%
27	18	0	0.0%	0	0.0%	0	0.0%	0	0.0%	0	0.1%
28	20	0	0.0%	0	0.0%	0	0.0%	0	0.0%	0	0.7%
29	19	0	0.0%	0	0.0%	0	0.0%	0	0.0%	0	0.1%
30	25	0	0.0%	0	0.0%	0	0.0%	0	0.0%	0	0.2%
31	12	0	0.0%	0	0.0%	0	0.0%	0	0.0%	0	0.0%
32	8	0	0.0%	0	0.0%	0	0.0%	0	0.0%	0	0.1%
33	6	0	0.0%	0	0.0%	0	0.0%	0	0.0%	0	0.0%
34	6	0	0.0%	0	0.0%	0	0.0%	0	0.0%	0	0.1%
35	6	0	0.0%	0	0.0%	0	0.0%	0	0.0%	0	0.1%
36	5	0	0.0%	0	0.0%	0	0.0%	0	0.0%	0	0.4%
37	6	0	0.0%	0	0.0%	0	0.0%	0	0.0%	0	0.0%
38	3	0	0.0%	0	0.0%	0	0.0%	0	0.0%	0	0.1%
39	6	0	0.0%	0	0.0%	0	0.0%	0	0.0%	0	0.1%
40	4	0	0.0%	0	0.0%	0	0.0%	0	0.0%	0	0.0%
41	7	0	0.0%	0	0.0%	0	0.0%	0	0.0%	0	0.0%
42	7	0	0.0%	0	0.0%	0	0.0%	0	0.0%	0	0.0%
43	5	0	0.0%	0	0.0%	0	0.0%	0	0.1%	0	0.2%
44	4	0	0.0%	0	0.0%	0	0.0%	0	0.0%	0	0.0%
45	4	0	0.0%	0	0.0%	0	0.0%	0	0.0%	0	0.0%
46	6	0	0.0%	0	0.2%	0	1.3%	0	0.0%	0	0.7%
47	6	0	0.0%	0	0.0%	0	0.0%	0	0.0%	0	0.1%
48	2	0	0.0%	0	0.0%	0	0.3%	0	0.0%	0	0.9%
49	7	0	0.0%	0	0.0%	0	0.0%	0	0.0%	0	0.0%
50	3	0	0.0%	0	0.0%	0	0.0%	0	0.0%	0	0.0%
51	3	0	0.0%	0	0.0%	0	0.0%	0	0.0%	0	0.3%
52	8	0	0.0%	0	0.0%	0	0.1%	0	0.0%	0	0.1%
53	8	0	0.0%	0	0.1%	0	0.1%	0	0.0%	0	0.0%
54	16	0	0.0%	0	0.0%	0	0.2%	0	0.0%	0	0.0%
55	9	0	0.0%	0	0.0%	0	0.0%	0	0.0%	0	0.0%
56	5	0	0.0%	0	0.0%	0	0.0%	0	0.0%	0	0.0%
57	3	0	0.0%	0	0.7%	0	1.1%	0	0.0%	0	0.7%
合計	1,127	1	0.1%	1	0.1%	1	0.0%	2	0.1%	2	0.2%

第Ⅲ編 被害想定  
7. 県民の生活支障、その他の調査

表 7.1-5(2) 生活支障の想定結果【教育の制約】

		%		%		%		%		%		%			
100	200	0	0.0%	0	0.0%	0	0.0%	0	0.0%	0	0.0%	0	0.0%	1	0.4%
130	225	1	0.5%	2	0.7%	1	0.3%	0	0.0%	0	0.0%	0	0.0%	0	0.2%
202	34	0	0.0%	0	0.0%	0	0.0%	0	0.3%	0	0.1%	0	0.0%	0	0.9%
203	64	0	0.0%	0	0.1%	0	0.3%	1	1.0%	1	0.8%	0	0.5%	0	0.5%
204	15	0	0.0%	0	0.0%	0	0.0%	0	0.0%	0	0.0%	0	0.0%	0	0.0%
205	35	0	0.0%	0	0.1%	0	0.1%	0	0.0%	0	0.0%	0	0.0%	0	0.2%
206	17	0	0.0%	0	0.0%	0	0.0%	0	0.0%	0	0.0%	0	0.0%	0	0.6%
207	25	0	0.0%	0	0.0%	0	0.0%	0	0.0%	0	0.0%	0	0.0%	0	0.1%
210	30	0	0.0%	0	0.0%	0	0.0%	0	0.5%	0	0.8%	0	0.4%	0	0.5%
211	15	0	0.0%	0	0.0%	0	0.0%	0	0.2%	0	0.2%	0	0.0%	0	0.2%
212	12	0	0.0%	0	0.0%	0	0.0%	0	0.0%	0	0.0%	0	0.0%	0	0.0%
213	17	0	0.0%	0	0.0%	0	0.0%	0	0.0%	0	0.0%	0	0.0%	0	0.4%
214	14	0	0.0%	0	0.0%	0	0.0%	0	0.0%	0	0.0%	0	0.0%	0	0.7%
215	10	0	0.0%	0	0.0%	0	0.0%	0	0.0%	0	0.0%	0	0.0%	0	0.2%
216	14	0	0.0%	0	0.2%	0	0.3%	0	0.4%	0	0.4%	0	0.2%	0	0.3%
217	17	0	0.0%	0	0.8%	0	1.4%	0	0.1%	0	0.1%	0	0.0%	0	0.2%
218	18	0	0.2%	0	0.6%	0	0.6%	0	0.0%	0	0.0%	0	0.0%	0	0.1%
219	15	0	0.8%	0	1.7%	0	1.7%	0	0.2%	0	0.1%	0	0.0%	0	0.5%
220	22	0	0.0%	0	0.0%	0	0.0%	0	0.0%	0	0.0%	0	0.0%	0	0.0%
221	13	0	0.1%	0	1.4%	0	2.1%	0	0.1%	0	0.1%	0	0.0%	0	0.2%
223	11	0	0.0%	0	0.1%	0	0.0%	0	0.0%	0	0.0%	0	0.0%	0	0.1%
224	10	0	0.1%	0	0.1%	0	0.0%	0	0.0%	0	0.0%	0	0.0%	0	0.2%
225	12	0	0.0%	0	0.0%	0	1.8%	0	3.5%	1	4.9%	1	5.5%	1	4.4%
226	13	0	0.1%	0	0.2%	0	0.1%	0	0.0%	0	0.0%	0	0.0%	0	0.3%
227	18	0	0.0%	0	0.1%	0	0.1%	0	0.0%	0	0.1%	0	0.1%	0	0.2%
228	20	0	0.0%	0	1.0%	0	2.1%	1	2.9%	1	3.4%	1	3.3%	1	2.8%
229	19	0	0.0%	0	0.4%	0	1.1%	0	2.5%	0	2.3%	0	0.9%	1	3.0%
230	25	0	1.3%	0	1.1%	0	0.1%	0	0.0%	0	0.0%	0	0.0%	0	1.4%
305	12	0	0.2%	0	0.6%	0	0.5%	0	0.0%	0	0.0%	0	0.0%	0	0.1%
341	8	0	0.0%	0	0.5%	0	0.4%	0	0.0%	0	0.0%	0	0.0%	0	0.0%
342	6	0	0.0%	0	0.1%	0	0.0%	0	0.0%	0	0.0%	0	0.0%	0	0.0%
343	6	0	0.3%	0	0.8%	0	0.4%	0	0.0%	0	0.0%	0	0.0%	0	0.1%
344	5	0	0.2%	0	0.7%	0	0.5%	0	0.0%	0	0.0%	0	0.0%	0	0.2%
345	6	0	0.0%	0	0.0%	0	0.0%	0	0.0%	0	0.0%	0	0.0%	0	0.0%
348	3	0	0.0%	0	0.0%	0	0.0%	0	0.0%	0	0.0%	0	0.0%	0	0.0%
349	6	0	0.2%	0	0.5%	0	0.1%	0	0.0%	0	0.0%	0	0.0%	0	0.1%
381	4	0	0.0%	0	0.0%	0	0.0%	0	0.0%	0	0.0%	0	0.0%	0	0.0%
382	7	0	0.0%	0	0.0%	0	0.0%	0	0.0%	0	0.0%	0	0.0%	0	0.0%
383	7	0	0.0%	0	0.0%	0	0.0%	0	0.0%	0	0.0%	0	0.0%	0	0.0%
384	5	0	0.0%	0	0.0%	0	0.0%	0	0.0%	0	0.0%	0	0.0%	0	0.1%
401	4	0	0.0%	0	0.0%	0	0.0%	0	0.0%	0	0.0%	0	0.0%	0	0.0%
402	8	0	0.0%	0	0.0%	0	0.0%	0	0.0%	0	0.0%	0	0.0%	0	0.0%
421	3	0	0.0%	0	0.0%	0	0.0%	0	0.0%	0	0.0%	0	0.0%	0	0.0%
447	6	0	0.2%	0	1.7%	0	2.4%	0	2.0%	0	2.7%	0	1.3%	0	2.1%
448	2	0	0.0%	0	0.0%	0	0.0%	0	0.0%	0	0.4%	0	1.3%	0	1.3%
503	5	0	0.0%	0	0.6%	0	1.0%	0	1.8%	0	1.5%	0	1.3%	0	1.1%
522	4	0	0.0%	0	0.0%	0	0.0%	0	0.0%	0	0.0%	0	0.0%	0	0.0%
544	4	0	0.0%	0	0.0%	0	0.1%	0	0.7%	0	0.6%	0	0.1%	0	0.3%
601	6	0	0.0%	0	0.0%	0	0.0%	0	0.0%	0	0.0%	0	0.0%	0	1.1%
602	6	0	0.0%	0	0.0%	0	0.0%	0	0.0%	0	0.0%	0	0.0%	0	0.2%
604	2	0	0.0%	0	0.0%	0	0.0%	0	0.0%	0	0.0%	0	0.0%	0	1.1%
605	7	0	0.0%	0	0.0%	0	0.0%	0	0.0%	0	0.0%	0	0.0%	0	0.0%
608	3	0	0.0%	0	0.0%	0	0.0%	0	0.0%	0	0.0%	0	0.0%	0	0.0%
609	3	0	0.0%	0	0.0%	0	0.0%	0	0.0%	0	0.0%	0	0.0%	0	0.5%
610	8	0	0.0%	0	0.0%	0	0.0%	0	0.0%	0	0.0%	0	0.0%	0	0.2%
621	8	0	0.0%	0	0.0%	0	0.0%	0	0.0%	0	0.0%	0	0.0%	0	0.1%
625	16	0	0.0%	0	0.0%	0	0.0%	0	0.0%	0	0.0%	0	0.0%	0	0.8%
642	9	0	0.0%	0	0.0%	0	0.0%	0	0.0%	0	0.0%	0	0.0%	0	0.1%
646	5	0	0.0%	0	0.0%	0	0.0%	0	0.0%	0	0.0%	0	0.0%	0	1.9%
647	3	0	0.0%	0	0.0%	0	0.0%	0	0.0%	0	0.0%	0	0.1%	0	3.3%
	1,127	2	0.1%	3	0.3%	4	0.3%	3	0.3%	3	0.3%	3	0.2%	5	0.5%

### 第Ⅲ編 被害想定

#### 7. 県民の生活支障、その他の調査

##### 7.2 エレベーター停止による閉じ込め者数の想定

###### 7.2.1 エレベーター閉じ込め者数の想定の流れ

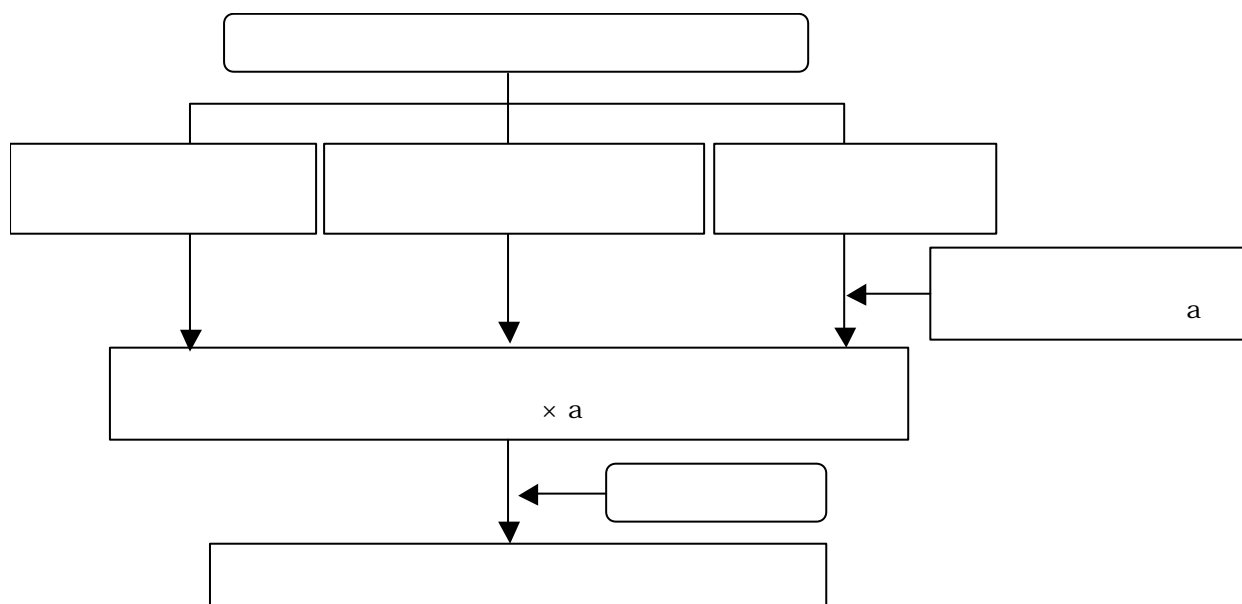


図 7.2-1 エレベーター閉じ込め者数の想定の流れ

###### 7.2.2 エレベーター閉じ込め者数の想定手法

2006

--

17 7 23

Q 115

Q 115

( )	( ) ×	Q 115 ( )
-----	-------	-----------

表 7.2-1 震度とエレベーター不動作率の関係

	25
	20
	15

11

( )	( ) ×	( )
-----	-------	-----

第Ⅲ編 被害想定  
7. 県民の生活支障、その他の調査

( )	( ) ×	( )
-----	-------	-----

×

( ) ×	( ) ×	( )
-------	-------	-----

12.8 /

44.2

14

15

2005

7.2.3 基礎資料

7.2-2

69.5

7.2.4 エレベーター閉じ込め者数の想定結果

7.2-3

25,000

6,000

12,000

7,000

1)

第Ⅲ編 被害想定

7.県民の生活支障、その他の調査

表 7.2-2 エレベーター現況台数（平成 23 年現在）

100	6 572	1 161	5 411
130	17 864	1 845	16 019
202	405	144	261
203	1 527	74	1 453
204	178	30	148
205	478	80	398
206	124	21	103
207	111	19	92
210	138	23	115
211	94	16	78
212	94	16	78
213	188	31	157
214	31	5	26
215	96	16	80
216	126	21	105
217	531	89	442
218	550	92	458
219	564	94	470
220	305	51	254
221	247	41	206
223	202	34	168
224	119	20	99
225	47	8	39
226	58	10	48
227	63	11	52
228	138	23	115
229	39	7	32
230	253	42	211
305	167	28	139
341	70	12	58
342	118	20	98
343	220	37	183
344	32	5	27
345	122	20	102
348	27	5	22
349	269	45	224
381	50	8	42
382	53	9	44
383	47	8	39
384	43	7	36
401	10	2	8
402	12	2	10
421	16	3	13
447	57	10	47
448	1	0	1
503	16	3	13
522	14	2	12
544	48	8	40
601	9	2	7
602	19	3	16
604	12	2	10
605	15	3	12
608	3	1	2
609	2	0	2
610	36	6	30
621	127	21	106
625	20	3	17
642	12	2	10
646	4	1	3
647	23	4	19
	32 816	4 306	28 510

第Ⅲ編 被害想定  
7. 県民の生活支障、その他の調査

表7.2-3 エレベーター閉じ込め者数

100	5,341	5,443	1,793	820	1,714	973	232	396	272	113	187	192	3,010	
130	136	192	249	3,134	6,902	4,707	18,659	20,249	9,844	2,557	1,788	600	7,819	
202	0	0	6	11	23	34	17	34	68	153	130	57	402	
203	17	17	51	85	226	492	147	515	758	2,240	2,088	1,556	1,737	
204	6	40	51	34	74	62	6	17	11	6	6	6	62	
205	17	40	68	102	419	481	40	113	119	34	68	51	170	
206	11	28	51	17	57	124	11	23	34	11	23	28	113	
207	0	0	0	0	6	6	6	11	23	57	34	11	107	
210	0	0	0	0	6	11	0	6	17	51	62	45	57	
211	0	0	0	0	6	17	6	17	40	113	91	28	102	
212	0	0	0	0	0	6	0	6	6	34	11	6	40	
213	28	85	96	11	40	51	6	11	17	6	11	17	102	
214	0	6	6	0	6	6	0	0	0	0	0	6	28	
215	11	28	17	23	51	23	6	17	6	0	0	0	45	
216	0	0	6	6	40	57	23	68	147	153	153	62	130	
217	6	6	11	45	164	226	147	543	639	209	198	85	243	
218	6	6	6	40	164	170	289	639	634	130	96	23	226	
219	6	11	23	107	255	306	543	798	798	238	187	68	322	
220	6	23	17	345	328	141	62	62	23	6	11	6	147	
221	6	6	11	51	130	158	141	351	368	119	119	51	153	
223	0	6	6	187	209	102	74	85	34	6	11	6	85	
224	0	6	6	141	141	57	34	34	11	6	6	0	57	
225	0	0	6	6	11	34	6	11	34	51	68	68	62	
226	6	11	11	57	68	68	11	23	11	6	6	6	28	
227	0	0	6	0	17	28	0	6	11	6	11	11	17	
228	6	11	17	17	40	113	17	45	124	147	175	175	158	
229	0	0	0	6	6	11	6	11	11	45	40	11	51	
230	0	0	6	40	68	28	232	107	51	40	17	6	226	
305	0	0	0	6	28	34	57	170	158	40	23	6	62	
341	0	0	0	23	40	68	40	85	85	23	23	6	40	
342	0	0	0	28	62	57	28	62	40	6	11	6	34	
343	0	0	0	34	102	91	113	226	124	23	23	6	96	
344	0	0	0	11	17	17	17	40	34	6	6	0	17	
345	0	0	0	51	119	40	45	51	28	6	6	0	45	
348	0	0	0	6	11	11	6	11	6	0	0	0	6	
349	0	0	6	74	136	124	136	289	136	23	23	6	124	
381	0	6	0	11	11	6	0	0	0	0	0	0	17	
382	0	6	0	11	11	6	0	0	0	0	0	0	17	
383	6	6	6	23	28	11	6	6	0	0	0	0	23	
384	6	11	6	40	45	17	6	6	6	0	6	0	40	
401	0	0	0	6	11	11	0	0	0	0	0	0	6	
402	0	6	6	6	11	6	0	0	0	0	0	0	6	
421	0	0	0	0	6	6	0	0	6	0	0	0	6	
447	0	6	6	11	40	57	17	51	68	57	62	57	62	
448	0	0	0	0	0	0	0	0	0	0	0	0	0	
503	6	0	0	0	6	6	0	6	17	23	23	17	17	
522	0	0	0	0	0	0	0	0	6	11	6	0	6	
544	6	0	0	0	6	11	0	11	17	62	62	28	51	
601	6	6	6	0	6	6	0	0	0	0	0	0	11	
602	6	6	6	0	6	6	0	0	6	0	6	6	11	
604	6	6	6	0	11	11	0	6	6	0	0	0	11	
605	6	6	6	0	6	6	0	0	0	0	0	6	6	
608	0	0	0	0	0	0	0	0	0	0	0	0	0	
609	0	0	0	0	0	0	0	0	0	0	0	0	0	
610	11	17	17	11	17	28	11	6	6	11	11	11	17	
621	34	91	40	17	23	28	17	11	17	17	17	17	57	
625	6	6	6	0	6	6	0	6	6	0	6	6	11	
642	0	0	0	0	0	0	0	0	0	0	0	0	17	
646	0	0	0	0	0	0	0	0	0	0	0	0	6	
647	6	11	11	6	11	11	6	6	6	6	6	6	23	
	5,714	6,155	2,648	5,660	11,947	9,173	21,226	25,247	14,889	6,851	5,917	3,365	16,544	



### 第Ⅲ編 被害想定

#### 7. 県民の生活支障、その他の調査

##### 7.3 帰宅困難者数の想定

###### 7.3.1 帰宅困難者数の想定の流れ

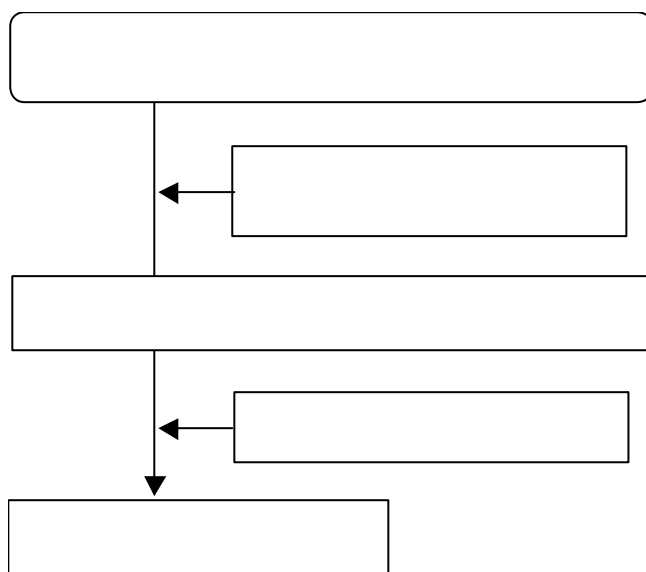
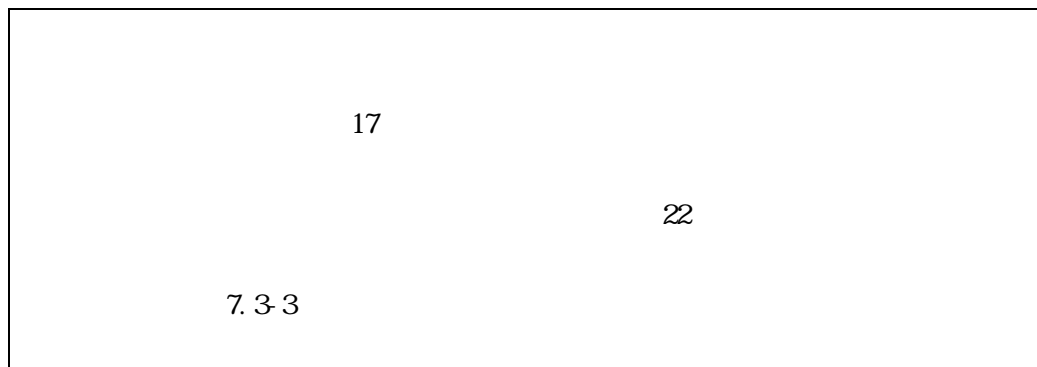
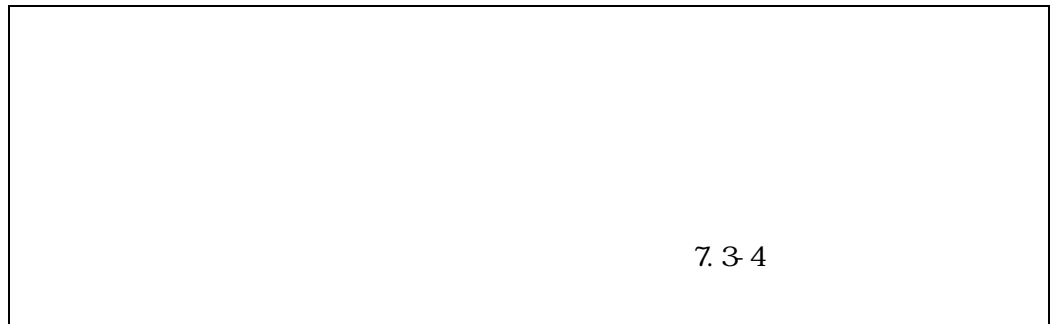


図 7.3-1 帰宅困難者数の想定の流れ

###### 7.3.2 帰宅困難者数の想定手法





2006

(2006)

7.3-1

7.3-2

表 7.3-1 帰宅困難率

10		0
10 20	50	50
20		100

2006

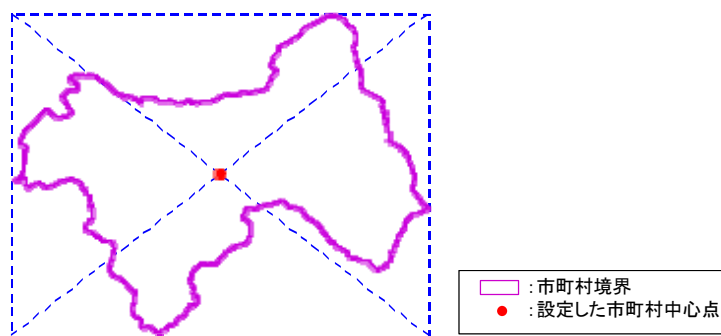


図 7.3-2 市町村の中心点の設定イメージ

### 第Ⅲ編 被害想定

#### 7. 県民の生活支障、その他の調査

##### 7.3.3 基礎資料

17

22

1	17
2	22

7.3.2 7.3.3

第Ⅲ編 被害想定  
7. 県民の生活支障、その他の調査

表 7.3-2 市町村別従業地・通学地による人口集計表（平成17年国勢調査より）

101	20,445	18,445	2,000	16,354	13,992	2,362	
103	20,103	19,658	445	18,089	17,540	549	
105	16,183	15,776	407	27,109	26,392	717	
106	27,293	25,929	1,364	89,646	85,116	4,530	
107	52,320	50,604	1,716	24,136	23,155	981	
108	19,985	19,624	361	22,222	21,840	382	
109	54,843	53,602	1,241	41,409	40,720	689	
131	68,855	67,301	1,554	66,973	64,725	2,248	
132	37,655	36,572	1,083	212,313	202,691	9,622	
133	37,432	36,281	1,151	166,900	161,633	5,267	
134	78,214	76,449	1,765	39,595	38,287	1,308	
135	53,543	52,246	1,297	27,548	26,481	1,067	
136	44,619	43,775	844	24,403	23,416	987	
137	65,718	64,403	1,315	34,563	33,519	1,044	
202	13,743	7,940	5,803	17,781	8,343	9,438	
203	45,279	34,103	11,176	48,008	38,457	9,551	
204	11,823	11,657	166	14,769	14,689	80	
205	31,594	31,207	387	33,134	32,791	343	
206	8,246	8,141	105	13,182	13,048	134	
207	15,623	14,025	1,598	9,510	8,562	948	
210	15,738	14,985	753	15,487	14,937	550	
211	12,733	11,719	1,014	11,405	10,878	527	
212	8,172	5,792	2,380	8,538	6,576	1,962	
213	16,667	16,089	578	10,454	10,098	356	
214	5,402	3,462	1,940	5,311	3,467	1,844	
215	14,194	14,015	179	6,824	6,795	29	
216	19,520	16,075	3,445	8,621	7,365	1,256	
217	32,779	30,215	2,564	17,413	16,261	1,152	
218	38,204	37,071	1,133	14,293	13,853	440	
219	32,202	31,147	1,055	18,678	18,091	587	
220	26,701	26,196	505	9,411	9,220	191	
221	23,056	22,166	890	18,472	17,560	912	
223	16,853	16,554	299	12,946	12,824	122	
224	18,382	18,104	278	6,272	6,243	29	
225	6,791	5,981	810	3,540	2,973	567	
226	7,692	7,626	66	12,161	12,081	80	
227	12,569	12,414	155	7,039	6,982	57	
228	12,428	11,416	1,012	15,074	14,100	974	
229	12,709	11,698	1,011	5,985	5,586	399	
230	30,856	29,912	944	10,455	9,670	785	
305	15,721	15,330	391	7,388	7,144	244	
341	13,269	12,983	286	6,611	6,489	122	
342	10,482	10,342	140	4,610	4,568	42	
343	13,618	13,359	259	9,033	8,931	102	
344	9,219	9,082	137	5,299	5,244	55	
345	8,533	8,402	131	10,775	10,659	116	
348	2,548	2,530	18	4,589	4,555	34	
349	12,848	12,723	125	12,905	12,738	167	
381	4,525	4,475	50	2,384	2,366	18	
382	10,826	10,678	148	4,305	4,294	11	
383	10,034	9,891	143	3,170	3,155	15	
384	6,806	6,696	110	4,646	4,626	20	
401	2,975	2,956	19	1,875	1,863	12	
402	5,434	5,388	46	4,121	4,099	22	
421	4,995	4,947	48	1,936	1,926	10	
447	9,997	9,303	694	4,007	3,841	166	
448	503	327	176	274	173	101	
503	5,323	4,798	525	3,064	2,807	257	
522	5,008	4,578	430	2,163	2,024	139	
544	6,167	5,823	344	4,125	3,952	173	
601	3,342	3,307	35	2,339	2,333	6	
602	2,841	2,812	29	965	959	6	
604	3,029	3,000	29	882	881	1	
605	4,227	4,199	28	2,111	2,103	8	
608	1,540	1,525	15	719	716	3	
609	980	976	4	275	275	0	
610	6,885	6,839	46	3,313	3,307	6	
621	7,755	7,530	225	13,881	13,411	470	
625	6,687	6,529	158	4,701	4,660	41	
642	2,390	1,201	1,189	1,467	704	763	
646	2,626	1,441	1,185	1,764	1,011	753	
647	5,716	5,314	402	3,086	2,888	198	
	1,294,013	1,229,659	64,354	1,298,806	1,229,659	69,147	

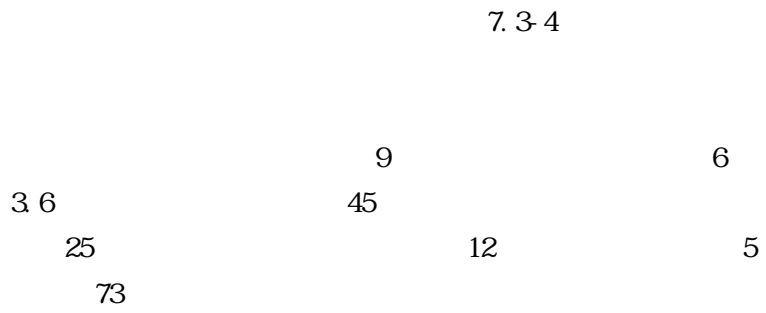
第Ⅲ編 被害想定

7.県民の生活支障、その他の調査

表 7.3-3 市町村別観光入込客数（平成 22 年）

	/			
100	45.3	16,535	7,362	9,173
130	45.0	16,420	9,690	6,730
202	6.7	2,453	1,610	843
203	13.8	5,021	1,402	3,619
204	3.6	1,307	107	1,200
205	6.6	2,424	500	1,924
206	1.0	374	21	353
207	3.2	1,159	522	637
210	5.7	2,080	382	1,698
211	1.9	711	99	612
212	1.9	677	161	516
213	1.3	462	63	399
214	5.5	1,998	763	1,235
215	0.1	46	0	46
216	1.7	609	139	470
217	5.0	1,840	214	1,626
218	1.7	607	0	607
219	0.5	200	0	200
220	17.8	6,510	677	5,833
221	18.7	6,812	1,495	5,317
223	1.7	609	1	608
224	12.9	4,721	1,047	3,674
225	5.2	1,905	488	1,417
226	3.0	1,087	297	790
227	3.0	1,101	1,101	0
228	8.6	3,137	939	2,198
229	1.5	542	95	447
230	12.3	4,504	962	3,542
305	0.9	313	41	272
341	2.7	975	43	932
342	4.8	1,739	1,004	735
343	0.0	17	0	17
344	0.3	95	1	94
345	0.8	298	8	290
348	0.7	252	22	230
349	0.2	56	0	56
381	1.5	565	20	545
382	0.1	40	0	40
383	0.8	286	1	285
384	0.6	202	0	202
401	0.1	46	0	46
402	0.4	129	3	126
421	0.0	16	1	15
447	2.7	977	169	808
448	2.2	818	250	568
503	0.1	24	6	18
522	1.0	382	61	321
544	0.4	150	14	136
601	0.9	334	53	281
602	3.3	1,221	182	1,039
604	0.3	92	2	90
605	0.8	277	30	247
608	1.4	524	29	495
609	1.0	370	46	324
610	1.6	573	11	562
621	0.6	232	23	209
625	3.7	1,338	13	1,325
642	0.0	10	3	7
646	3.8	1,398	419	979
647	1.4	526	67	459
	274.3	100,126	32,659	67,467

7.3.4 帰宅困難者数の想定結果



7.3.4

( )

( )

第Ⅲ編 被害想定

7.県民の生活支障、その他の調査

表 7.3-4(1) 帰宅困難者数の想定結果

101	15,906	7,610	15,906	7,610	15,906	7,610	15,906	7,610	15,906	7,610	15,906	7,610
103	11,527	6,220	11,527	6,220	11,527	6,220	11,527	6,220	11,527	6,220	11,527	6,220
105	15,838	3,398	15,838	3,398	15,838	3,398	15,838	3,398	15,838	3,398	15,838	3,398
106	32,282	6,795	32,282	6,795	32,282	6,795	32,282	6,795	32,282	6,795	32,282	6,795
107	16,634	13,472	16,634	13,472	16,634	13,472	16,634	13,472	16,634	13,472	16,634	13,472
108	11,806	3,035	11,806	3,035	11,806	3,035	11,806	3,035	11,806	3,035	11,806	3,035
109	17,864	19,016	17,864	19,016	17,864	19,016	17,864	19,016	17,864	19,016	17,864	19,016
131	37,945	18,288	37,945	18,288	37,945	18,288	37,945	18,288	37,945	18,288	37,945	18,288
132	79,308	5,549	79,308	5,549	79,308	5,549	79,308	5,549	79,308	5,549	79,308	5,549
133	60,848	6,514	60,848	6,514	60,848	6,514	60,848	6,514	60,848	6,514	60,848	6,514
134	16,751	9,376	16,751	9,376	16,751	9,376	16,751	9,376	16,751	9,376	16,751	9,376
135	19,531	29,075	19,531	29,075	19,531	29,075	19,531	29,075	19,531	29,075	19,531	29,075
136	13,483	4,856	13,988	5,048	13,988	5,048	14,165	5,068	14,165	5,068	14,165	5,068
137	19,849	18,967	19,849	18,967	19,849	18,967	19,849	18,967	19,849	18,967	19,849	18,967
202	18,799	10,482	20,441	11,678	20,441	11,678	20,441	11,678	20,441	11,678	20,441	11,678
203	48,512	36,380	48,512	36,380	48,512	36,380	48,512	36,380	48,512	36,380	48,512	36,380
204	7,248	4,076	7,248	4,076	7,248	4,076	7,248	4,076	7,248	4,076	7,248	4,076
205	16,538	11,050	16,538	11,050	16,538	11,050	16,538	11,050	16,538	11,050	16,538	11,050
206	4,627	3,654	4,627	3,654	4,627	3,654	4,627	3,654	4,627	3,654	4,627	3,654
207	6,373	6,788	7,330	8,556	7,330	8,556	7,344	8,666	7,344	8,666	7,344	8,666
210	9,841	5,796	9,841	5,796	9,841	5,796	9,841	5,796	9,841	5,796	9,841	5,796
211	5,315	4,998	6,417	5,836	6,417	5,836	6,417	5,836	6,417	5,836	6,417	5,836
212	5,130	4,178	5,471	4,517	5,471	4,517	5,475	4,569	5,475	4,569	5,475	4,569
213	5,525	6,300	5,525	6,300	5,525	6,300	5,525	6,300	5,525	6,300	5,525	6,300
214	8,270	3,665	8,270	3,665	8,270	3,665	8,270	3,665	8,270	3,665	8,270	3,665
215	1,186	3,739	1,186	3,739	1,186	3,739	1,186	3,739	1,186	3,739	1,186	3,739
216	6,406	14,492	6,406	14,492	6,406	14,492	6,406	14,492	6,406	14,492	6,406	14,492
217	11,476	15,351	11,476	15,351	11,476	15,351	11,476	15,351	11,476	15,351	11,476	15,351
218	4,019	4,765	4,019	4,765	4,019	4,765	4,019	4,765	4,019	4,765	4,019	4,765
219	4,128	7,263	4,128	7,263	4,128	7,263	4,128	7,263	4,128	7,263	4,128	7,263
220	22,489	19,787	22,489	19,787	22,489	19,787	22,489	19,787	22,489	19,787	22,489	19,787
221	25,039	9,106	25,039	9,106	25,039	9,106	25,039	9,106	25,039	9,106	25,039	9,106
222	5,233	6,085	5,233	6,085	5,233	6,085	5,233	6,085	5,233	6,085	5,233	6,085
224	14,695	10,702	14,695	10,702	14,695	10,702	14,695	10,702	14,695	10,702	14,695	10,702
225	7,831	5,061	7,831	5,061	7,831	5,061	7,831	5,061	7,831	5,061	7,831	5,061
226	7,687	2,627	7,687	2,627	7,687	2,627	7,687	2,627	7,687	2,627	7,687	2,627
227	4,416	4,343	4,416	4,343	4,416	4,343	4,416	4,343	4,416	4,343	4,416	4,343
228	16,954	7,565	16,954	7,565	16,954	7,565	16,954	7,565	16,954	7,565	16,954	7,565
229	2,839	4,794	2,839	4,794	2,839	4,794	2,839	4,794	2,839	4,794	2,839	4,794
230	16,983	17,121	16,983	17,121	16,983	17,121	16,983	17,121	16,983	17,121	16,983	17,121
305	2,399	5,587	2,571	5,881	2,571	5,881	2,571	5,881	2,571	5,881	2,571	5,881
341	4,152	2,808	4,152	2,808	4,152	2,808	4,152	2,808	4,152	2,808	4,152	2,808
342	6,066	2,967	6,179	3,055	6,179	3,055	6,179	3,055	6,179	3,055	6,179	3,055
343	1,381	1,211	1,381	1,211	1,381	1,211	1,381	1,211	1,381	1,211	1,381	1,211
344	1,110	1,249	1,110	1,249	1,110	1,249	1,110	1,249	1,110	1,249	1,110	1,249
345	3,539	2,743	3,539	2,743	3,539	2,743	3,539	2,743	3,539	2,743	3,539	2,743
348	1,790	619	1,790	619	1,790	619	1,790	619	1,790	619	1,790	619
349	2,770	1,348	2,770	1,348	2,770	1,348	2,770	1,348	2,770	1,348	2,770	1,348
381	2,085	1,814	2,085	1,814	2,085	1,814	2,085	1,814	2,085	1,814	2,085	1,814
382	667	2,639	667	2,639	667	2,639	667	2,639	667	2,639	667	2,639
383	1,834	5,823	1,834	5,823	1,834	5,823	1,834	5,823	1,834	5,823	1,834	5,823
384	1,328	2,643	1,328	2,643	1,328	2,643	1,328	2,643	1,328	2,643	1,328	2,643
401	553	699	553	699	553	699	553	699	553	699	553	699
402	1,168	1,573	1,168	1,573	1,168	1,573	1,168	1,573	1,168	1,573	1,168	1,573
421	472	2,102	488	2,167	488	2,167	488	2,167	488	2,167	488	2,167
447	4,336	5,614	4,336	5,614	4,336	5,614	4,336	5,614	4,336	5,614	4,336	5,614
448	2,428	349	2,428	349	2,428	349	2,428	349	2,428	349	2,428	349
503	1,340	2,858	1,340	2,858	1,340	2,858	1,340	2,858	1,340	2,858	1,340	2,858
522	1,590	1,887	1,614	1,981	1,614	1,981	1,616	1,996	1,616	1,996	1,616	1,996
544	1,211	1,204	1,211	1,204	1,211	1,204	1,211	1,204	1,211	1,204	1,211	1,204
601	1,461	1,132	1,461	1,132	1,461	1,132	1,461	1,132	1,461	1,132	1,461	1,132
602	3,819	1,735	3,819	1,735	3,819	1,735	3,819	1,735	3,819	1,735	3,819	1,735
604	436	820	436	820	436	820	436	820	436	820	436	820
605	1,197	1,448	1,197	1,448	1,197	1,448	1,197	1,448	1,197	1,448	1,197	1,448
608	1,585	471	1,585	471	1,585	471	1,585	471	1,585	471	1,585	471
609	1,070	336	1,070	336	1,070	336	1,070	336	1,070	336	1,070	336
610	2,187	1,737	2,187	1,737	2,187	1,737	2,187	1,737	2,187	1,737	2,187	1,737
621	4,863	2,547	4,863	2,547	4,863	2,547	4,863	2,547	4,863	2,547	4,863	2,547
625	4,770	2,922	4,770	2,922	4,770	2,922	4,770	2,922	4,770	2,922	4,770	2,922
642	880	1,529	880	1,529	880	1,529	880	1,529	880	1,529	880	1,529
646	4,699	1,592	4,699	1,592	4,699	1,592	4,699	1,592	4,699	1,592	4,699	1,592
647	2,554	2,964	2,554	2,964	2,554	2,964	2,554	2,964	2,554	2,964	2,554	2,964
	728,868	449,295	733,741	454,168	733,741	454,168	733,938	454,365	733,938	454,365	733,938	454,365

**第Ⅲ編 被害想定**  
**7. 県民の生活支障、その他の調査**

**表 7. 3-4(2) 帰宅困難者数の想定結果**

101	15,906	7,610	15,906	7,610	15,906	7,610	15,906	7,610	15,906	7,610	15,906	7,610	15,906	7,610
103	11,527	6,220	11,527	6,220	11,527	6,220	11,527	6,220	11,527	6,220	11,527	6,220	11,527	6,220
105	15,838	3,398	15,838	3,398	15,838	3,398	15,838	3,398	15,838	3,398	15,838	3,398	15,838	3,398
106	32,282	6,795	32,282	6,795	32,282	6,795	32,282	6,795	32,282	6,795	32,282	6,795	32,282	6,795
107	16,634	13,472	16,634	13,472	16,634	13,472	16,634	13,472	16,634	13,472	16,634	13,472	16,634	13,472
108	11,806	3,035	11,806	3,035	11,806	3,035	11,806	3,035	11,806	3,035	11,806	3,035	11,806	3,035
109	17,864	19,016	17,864	19,016	17,864	19,016	17,864	19,016	17,864	19,016	17,864	19,016	17,864	19,016
131	37,945	18,288	37,945	18,288	37,945	18,288	37,945	18,288	37,945	18,288	37,945	18,288	37,945	18,288
132	79,308	5,549	79,308	5,549	79,308	5,549	79,308	5,549	79,308	5,549	79,308	5,549	79,308	5,549
133	60,848	6,514	60,848	6,514	60,848	6,514	60,848	6,514	60,848	6,514	60,848	6,514	60,848	6,514
134	16,751	9,376	16,751	9,376	16,751	9,376	16,751	9,376	16,751	9,376	16,751	9,376	16,751	9,376
135	19,531	29,075	19,531	29,075	19,531	29,075	19,531	29,075	19,531	29,075	19,531	29,075	19,531	29,075
136	14,165	5,068	14,165	5,068	14,165	5,068	14,165	5,068	14,165	5,068	14,165	5,068	14,165	5,068
137	19,849	18,967	19,849	18,967	19,849	18,967	19,849	18,967	19,849	18,967	19,849	18,967	19,849	18,967
202	20,441	11,678	20,441	11,678	20,441	11,678	20,441	11,678	20,441	11,678	20,441	11,678	20,441	11,678
203	48,512	36,380	48,512	36,380	48,512	36,380	48,512	36,380	48,512	36,380	48,512	36,380	48,512	36,380
204	7,248	4,076	7,248	4,076	7,248	4,076	7,248	4,076	7,248	4,076	7,248	4,076	7,248	4,076
205	16,538	11,050	16,538	11,050	16,538	11,050	16,538	11,050	16,538	11,050	16,538	11,050	16,538	11,050
206	4,627	3,654	4,627	3,654	4,627	3,654	4,627	3,654	4,627	3,654	4,627	3,654	4,627	3,654
207	7,344	8,666	7,344	8,666	7,344	8,666	7,344	8,666	7,344	8,666	7,344	8,666	7,344	8,666
210	9,841	5,796	9,841	5,796	9,841	5,796	9,841	5,796	9,841	5,796	9,841	5,796	9,841	5,796
211	6,417	5,836	6,417	5,836	6,417	5,836	6,417	5,836	6,417	5,836	6,417	5,836	6,417	5,836
212	5,475	4,569	5,475	4,569	5,475	4,569	5,475	4,569	5,475	4,569	5,475	4,569	5,475	4,569
213	5,525	6,300	5,525	6,300	5,525	6,300	5,525	6,300	5,525	6,300	5,525	6,300	5,525	6,300
214	8,270	3,665	8,270	3,665	8,270	3,665	8,270	3,665	8,270	3,665	8,270	3,665	8,270	3,665
215	1,186	3,739	1,186	3,739	1,186	3,739	1,186	3,739	1,186	3,739	1,186	3,739	1,186	3,739
216	6,406	14,492	6,406	14,492	6,406	14,492	6,406	14,492	6,406	14,492	6,406	14,492	6,406	14,492
217	11,476	15,351	11,476	15,351	11,476	15,351	11,476	15,351	11,476	15,351	11,476	15,351	11,476	15,351
218	4,019	4,765	4,019	4,765	4,019	4,765	4,019	4,765	4,019	4,765	4,019	4,765	4,019	4,765
219	4,128	7,263	4,128	7,263	4,128	7,263	4,128	7,263	4,128	7,263	4,128	7,263	4,128	7,263
220	22,489	19,787	22,489	19,787	22,489	19,787	22,489	19,787	22,489	19,787	22,489	19,787	22,489	19,787
221	25,039	9,106	25,039	9,106	25,039	9,106	25,039	9,106	25,039	9,106	25,039	9,106	25,039	9,106
223	5,233	6,085	5,233	6,085	5,233	6,085	5,233	6,085	5,233	6,085	5,233	6,085	5,233	6,085
224	14,695	10,702	14,695	10,702	14,695	10,702	14,695	10,702	14,695	10,702	14,695	10,702	14,695	10,702
225	7,831	5,061	7,831	5,061	7,831	5,061	7,831	5,061	7,831	5,061	7,831	5,061	7,831	5,061
226	7,687	2,627	7,687	2,627	7,687	2,627	7,687	2,627	7,687	2,627	7,687	2,627	7,687	2,627
227	4,416	4,343	4,416	4,343	4,416	4,343	4,416	4,343	4,416	4,343	4,416	4,343	4,416	4,343
228	16,954	7,565	16,954	7,565	16,954	7,565	16,954	7,565	16,954	7,565	16,954	7,565	16,954	7,565
229	2,839	4,794	2,839	4,794	2,839	4,794	2,839	4,794	2,839	4,794	2,839	4,794	2,839	4,794
230	16,983	17,121	16,983	17,121	16,983	17,121	16,983	17,121	16,983	17,121	16,983	17,121	16,983	17,121
305	2,571	5,881	2,571	5,881	2,571	5,881	2,571	5,881	2,571	5,881	2,571	5,881	2,571	5,881
341	4,152	2,808	4,152	2,808	4,152	2,808	4,152	2,808	4,152	2,808	4,152	2,808	4,152	2,808
342	6,179	3,055	6,179	3,055	6,179	3,055	6,179	3,055	6,179	3,055	6,179	3,055	6,179	3,055
343	1,381	1,211	1,381	1,211	1,381	1,211	1,381	1,211	1,381	1,211	1,381	1,211	1,381	1,211
344	1,110	1,249	1,110	1,249	1,110	1,249	1,110	1,249	1,110	1,249	1,110	1,249	1,110	1,249
345	3,539	2,743	3,539	2,743	3,539	2,743	3,539	2,743	3,539	2,743	3,539	2,743	3,539	2,743
348	1,790	619	1,790	619	1,790	619	1,790	619	1,790	619	1,790	619	1,790	619
349	2,770	1,348	2,770	1,348	2,770	1,348	2,770	1,348	2,770	1,348	2,770	1,348	2,770	1,348
381	2,085	1,814	2,085	1,814	2,085	1,814	2,085	1,814	2,085	1,814	2,085	1,814	2,085	1,814
382	667	2,639	667	2,639	667	2,639	667	2,639	667	2,639	667	2,639	667	2,639
383	1,834	5,823	1,834	5,823	1,834	5,823	1,834	5,823	1,834	5,823	1,834	5,823	1,834	5,823
384	1,328	2,643	1,328	2,643	1,328	2,643	1,328	2,643	1,328	2,643	1,328	2,643	1,328	2,643
401	553	699	553	699	553	699	553	699	553	699	553	699	553	699
402	1,168	1,573	1,168	1,573	1,168	1,573	1,168	1,573	1,168	1,573	1,168	1,573	1,168	1,573
421	488	2,167	488	2,167	488	2,167	488	2,167	488	2,167	488	2,167	488	2,167
447	4,336	5,614	4,336	5,614	4,336	5,614	4,336	5,614	4,336	5,614	4,336	5,614	4,336	5,614
448	2,428	349	2,428	349	2,428	349	2,428	349	2,428	349	2,428	349	2,428	349
503	1,340	2,858	1,340	2,858	1,340	2,858	1,340	2,858	1,340	2,858	1,340	2,858	1,340	2,858
522	1,616	1,996	1,616	1,996	1,616	1,996	1,616	1,996	1,616	1,996	1,616	1,996	1,616	1,996
544	1,211	1,204	1,211	1,204	1,211	1,204	1,211	1,204	1,211	1,204	1,211	1,204	1,211	1,204
601	1,461	1,132	1,461	1,132	1,461	1,132	1,461	1,132	1,461	1,132	1,461	1,132	1,461	1,132
602	3,819	1,735	3,819	1,735	3,819	1,735	3,819	1,735	3,819	1,735	3,819	1,735	3,819	1,735
604	436	820	436	820	436	820	436	820	436	820	436	820	436	820
605	1,197	1,448	1,197	1,448	1,197	1,448	1,197	1,448	1,197	1,448	1,197	1,448	1,197	1,448
608	1,585	471	1,585	471	1,585	471	1,585	471	1,585	471	1,585	471	1,585	471
609	1,070	336	1,070	336	1,070	336	1,070	336	1,070	336	1,070	336	1,070	336
610	2,187	1,737	2,187	1,737	2,187	1,737	2,187	1,737	2,187	1,737	2,187	1,737	2,187	1,737
621	4,863	2,547	4,863	2,547	4,863	2,547	4,863	2,547	4,863	2,547	4,863	2,547	4,863	2,547
625	4,770	2,922	4,770	2,922	4,770	2,922	4,770	2,922	4,770	2,922	4,770	2,922	4,770	2,922
642	880	1,529	880	1,529	880	1,529	880	1,529	880	1,529	880	1,529	880	1,529
646	4,699	1,592	4,699	1,592	4,699	1,592	4,699	1,592	4,699	1,592	4,699	1,592	4,699	1,592
647	2,554	2,964	2,554	2,964	2,554	2,964	2,554	2,964	2,554	2,964	2,554	2,964	2,554	2,964
	733,938	454,365	733,938	454,365	733,938	454,365	733,938	454,365	733,938	454,365	733,938	454,365	733,938	454,365