

第Ⅲ編 被害想定

1. 建物被害の想定

1.1 建物被害の想定の流れ

【 木造建物 】

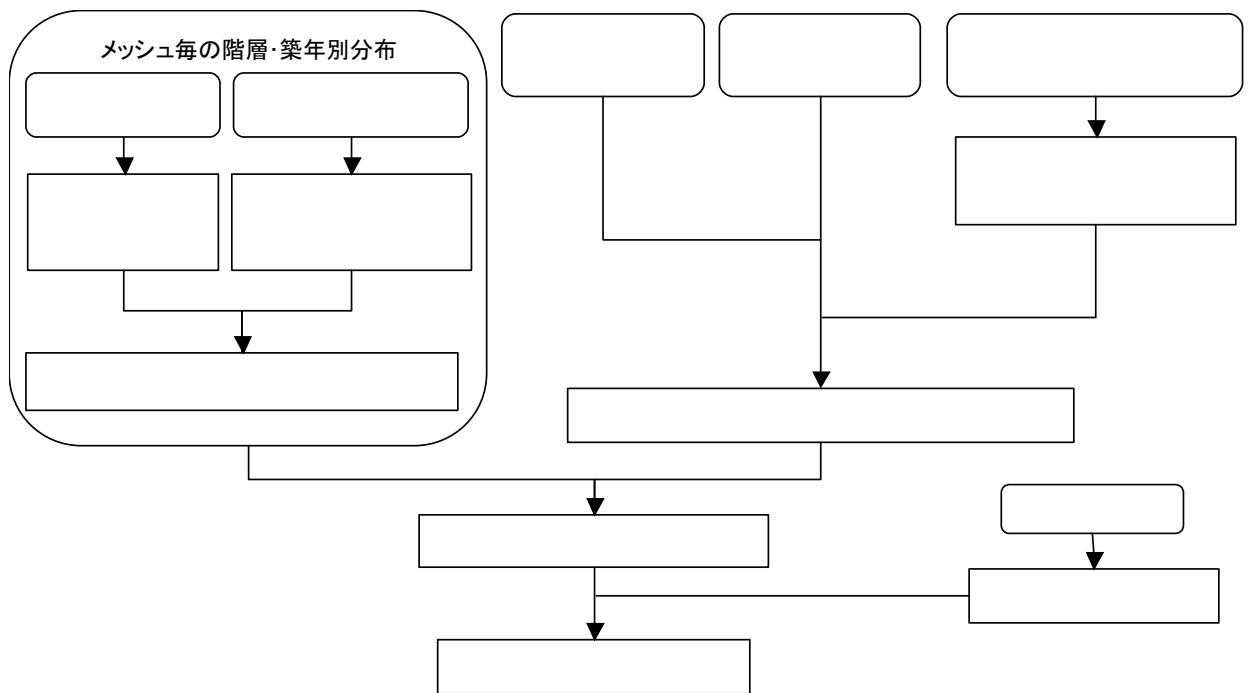


図 1.1-1 木造建物被害の想定の流れ



第Ⅲ編 被害想定  
1. 建物被害の想定

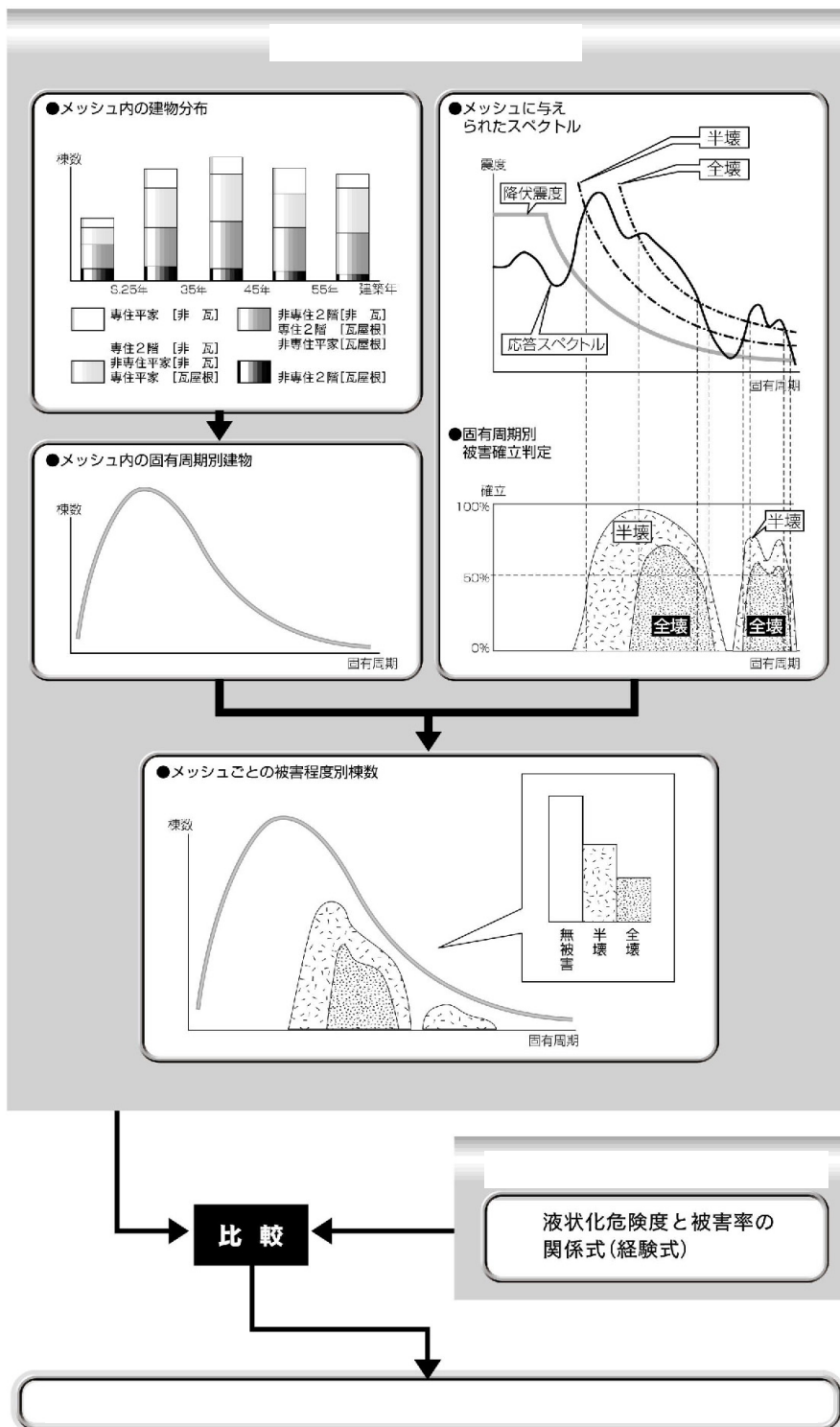


図 1.1-2 メッシュ毎の木造建物被害の想定の流れ

【 非木造建物 】

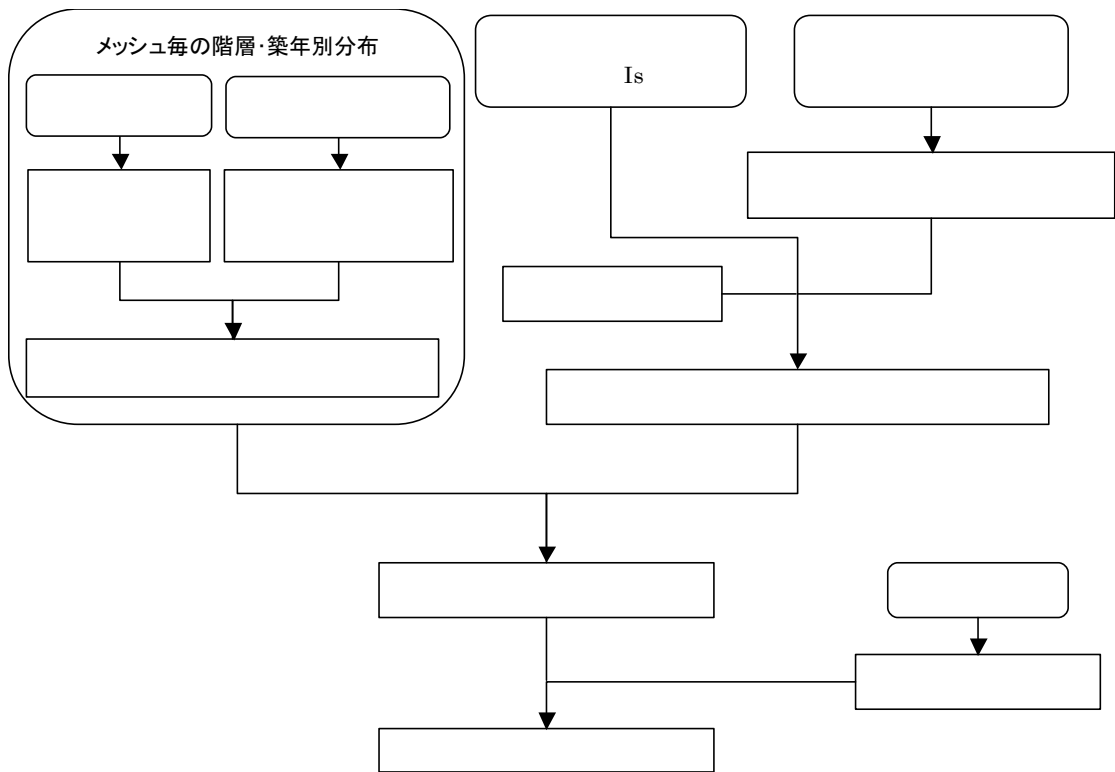


図 1.1-3 非木造建物被害の想定の流れ



第Ⅲ編 被害想定  
1. 建物被害の想定

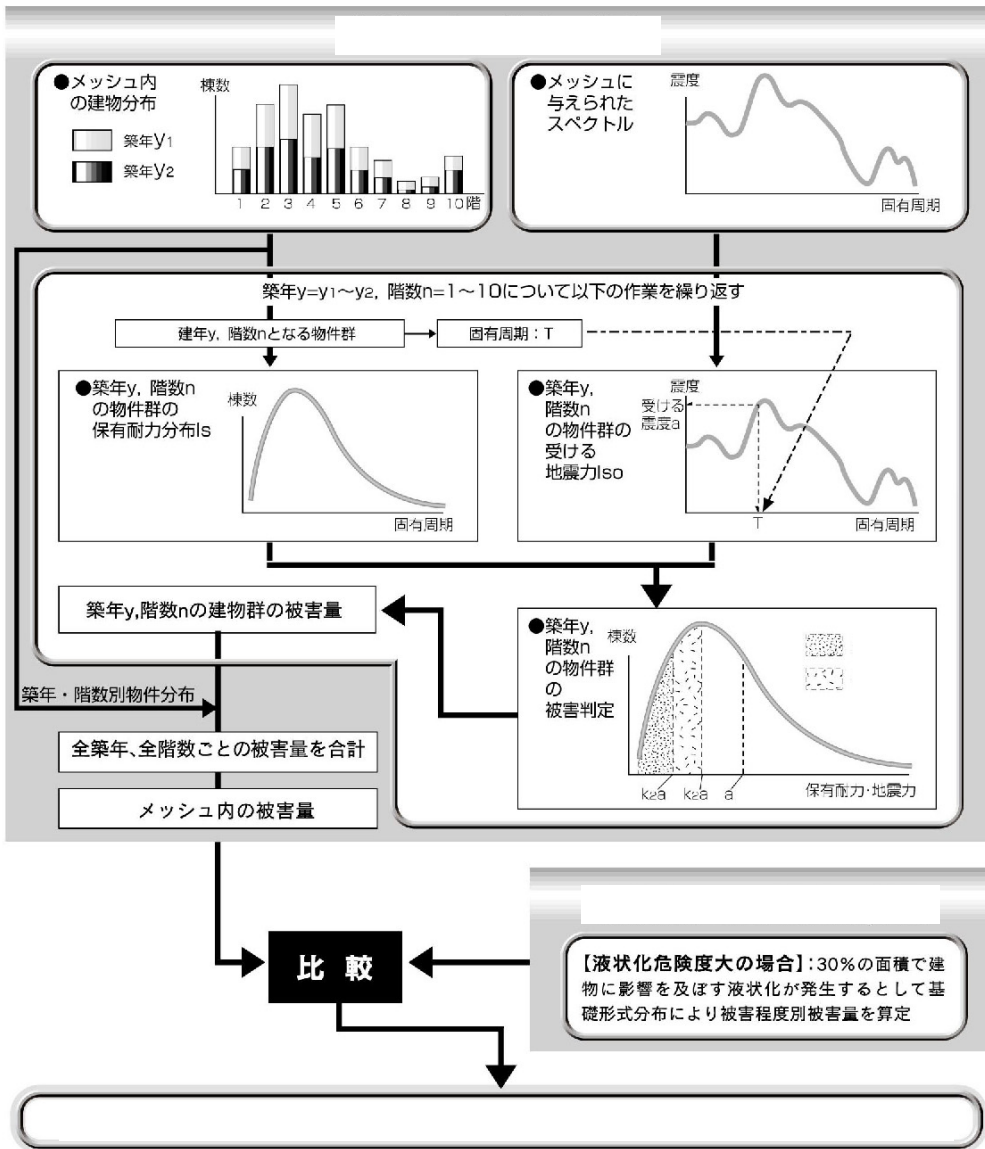


図 1.1-4 メッシュ毎の非木造建物被害の想定の流れ



1.2 建物被害の想定手法

1.2.1 被害の基準

45

10

246


70 50 20 70 20 50

第Ⅲ編 被害想定  
1. 建物被害の想定

1978  
1978  
, 1980

表 1.2-1 RC造建物の被害ランク

		RC
		RC

表 1.2-2 S造建物の被害ランク

		1/30
		1/30

1.2.2 木造建物被害の想定手法

1993

1.2.3

1.2.1

表 1.2-3 木造建物のグルーピング

	25			
	26 35			
	36 45			
	46 55			
	56			

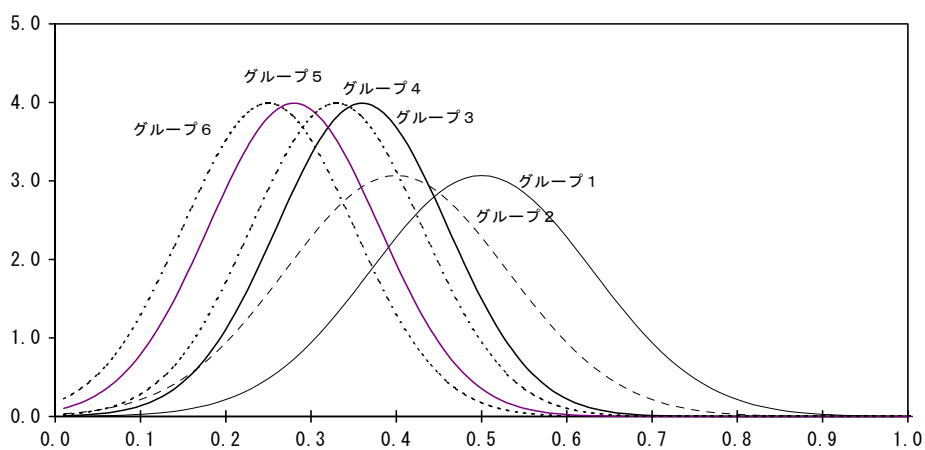


図 1.2-1 建物グループ別の棟数割合と固有周期

第Ⅲ編 被害想定  
1. 建物被害の想定

1985

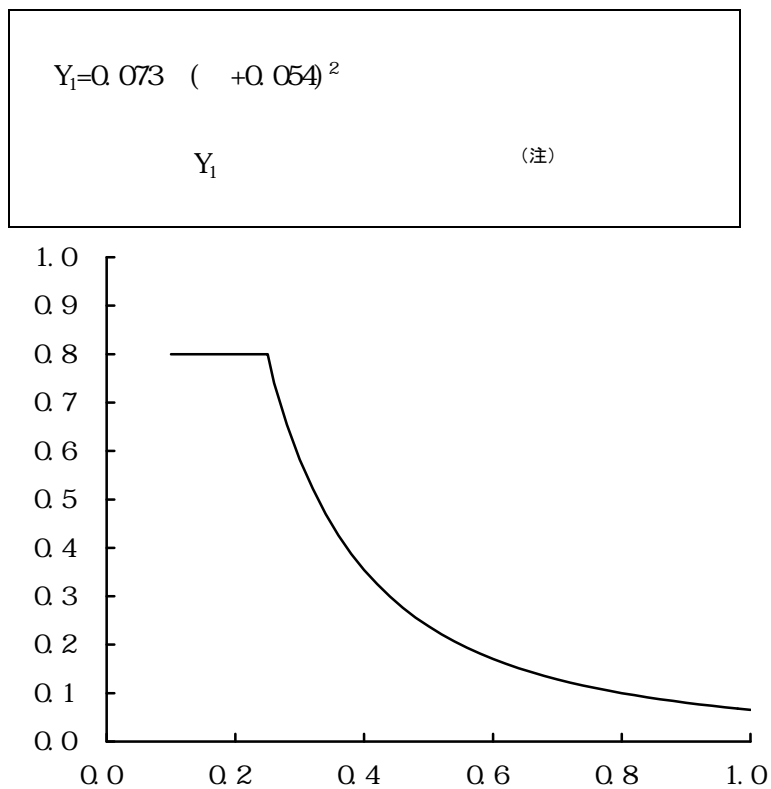


図 1.2-2 木造建物の固有周期と降伏ベースシア係数の関係

1.2-3  
5.0

12

1.2-4

4Y1

1.2

10 19 12

3Y1

:



第Ⅲ編 被害想定  
1. 建物被害の想定

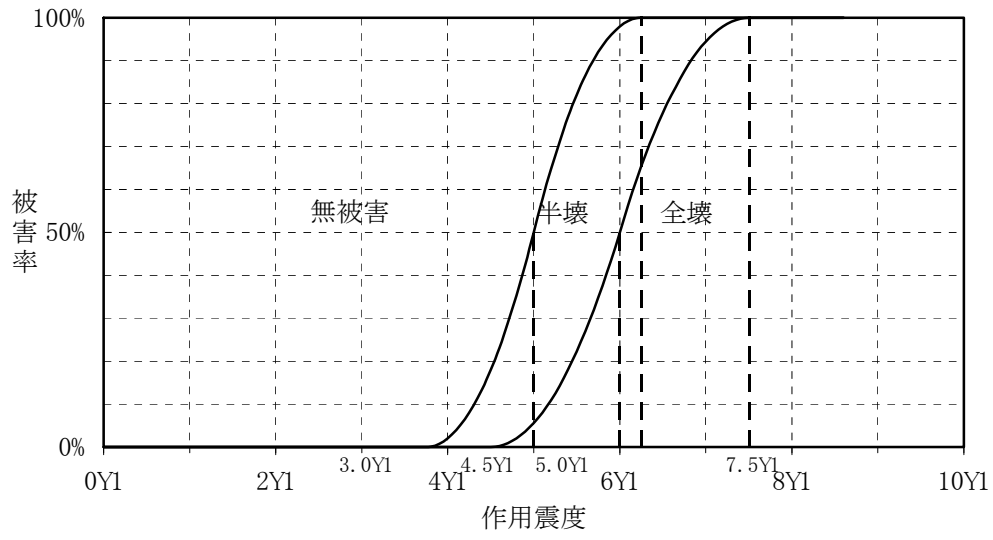
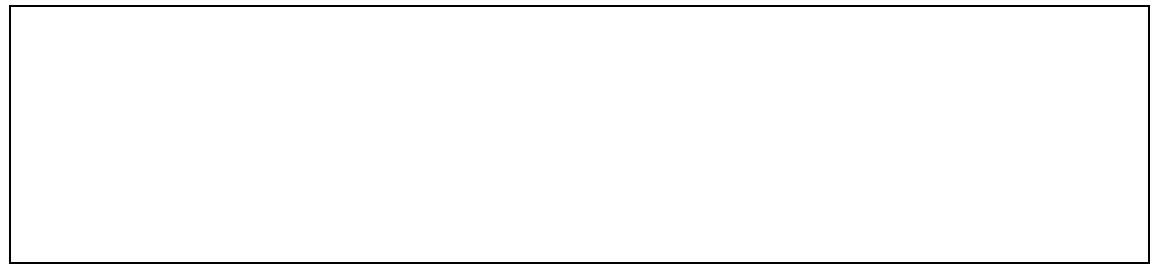


図 1.2-5 木造建物に作用する震度と被害率

(1986)



(1986)

$$Y = 0.667 \times \begin{Bmatrix} 1 \\ 2 \\ 3 \end{Bmatrix} \times \begin{Bmatrix} 1 \\ 2 \\ 3 \end{Bmatrix} \times PL \cdot 1.995 \times \begin{Bmatrix} 1 \\ 2 \end{Bmatrix}$$

Y ( )  
PL

(1989)

1:2

( 1, 2 3 ) ( 1, 2 3 ) ( 1, 2 )

50

Q.222

B1, B2		B1=1.000 B2=5.000
S1, S2, S3	(M 7.5) (M 7.7.4) (M 6.9)	S1=1.300 S2=1.000 S3=0.222
0.222	(M 7.5) (M 7.4)	S2=1.000 S3=0.222
G1, G2, G3		G1=1.6 G2=1.0 G3=0.3
1.0		

1.2.3 非木造建物被害の想定手法

Is

Iso

Is

Iso

$$Iso = S_A(T_s) \cdot 980$$

$$S_A(T_s) \quad T \quad \text{cm/s}^2$$

$$T_s = 0.06n$$

$$T_s = 0.10n$$

n

a)  $C_T = T/T_B = 1 / \{1 - (U_H + U_R)\}$

$$U_H = 1 / (1 + U_R/U_H + U_B/U_H)$$

$$U_R = 1 / (1 + U_H/U_R + U_B/U_R)$$

$$U_H = (W_B + W_H)/K_H$$

$$U_R = W_B \cdot H_B^2 / K_R$$

$$U_B = W_B / K_B$$

$$K_B = W_B / g \cdot (2 / T_B)^2$$

$$K_H = 2 \cdot r_H \cdot G / (2 - )$$

$$K_R = R_r^3 \cdot G / 2(1 - )$$

T

T\_B

W\_B = n \cdot W

第Ⅲ編 被害想定  
1. 建物被害の想定

$$\begin{aligned}
 W &= W = 0.7 + 0.8(n-1)/29 \\
 H_B &= (n+1) H_B/2 \\
 G &= V_s^2 \\
 n & \\
 W &= w_0 A \\
 H_B &= 3.5m \\
 &= 0.5 \\
 r &= (A) \\
 r_R &= r \\
 &= 0.9 \\
 g &= 9.8m/sec^2 \\
 A & \\
 W &= 1.05t/m^2 \\
 s & \\
 V_s &
 \end{aligned}$$

b) Cm

$$\begin{aligned}
 C_m &= \frac{1}{2n} \{ (n+1) + (n-1) \} H \\
 \beta_1 &= \frac{1 + \eta_H}{2 \{ \eta_H + (1 - \eta_H)^2 (2n + 1) / 6n \}}
 \end{aligned}$$

c) Ch

$$\begin{aligned}
 Ch &= 1 - \{ 1 - 2.25 / (1.75 + 10h) \} t & h &= 0.05 \\
 Ch &= 1 + \{ 1.50 / (1.00 + 10h) - 1 \} t & h &= 0.05 \\
 h &= h_B + h_H + h_{H^*} + h_R \\
 t &= 0 & T &= 0.05 \\
 t &= (1 \log T + 1.3) / 0.3 & & 0.05 \leq T \leq 0.10 \\
 t &= 1 & & 0.10 \leq T \leq 2.50 \\
 h & & & \\
 T & & & \text{sec} \\
 h_B & & & = 0.02 \\
 h_H & & & = 0.15 \\
 h_R & & & = 0.07
 \end{aligned}$$

B H R

$$\begin{aligned}
 E_B &= 0.5 W_B^2 / K_B \\
 E_H &= 0.5 (W_B + W_H)^2 / K_H \\
 E_R &= 0.5 (W_B H_B)^2 / K^R \\
 E &= E_B + E_H + E_R \\
 B &= E_B / E \quad H = E_H / E \quad R = E_R / E
 \end{aligned}$$

Iso Is



1991  
 4Is Iso  
 2Is Iso 4Is  
 Iso 2Is  
 S  
 7Is Iso  
 5Is Iso 7Is  
 Iso 5I

1993

(1989)

1989 1964  
 30

30

30

表 1.2-4 RC系建物の階数と基礎形式 単位 (%)

	1 2	3	4 7	8	
	15	60	95	100	} (× 30 )
	15	20	5	0	
	70	20	0	0	

表 1.2-5 S造建物の階数と基礎形式 単位 (%)

	1 2	4 7	8	
	0	30	100	} (× 30 )
	10	50	0	
	90	20	0	

第Ⅲ編 被害想定  
1. 建物被害の想定

1.3 基礎資料

23 11

23

1	23
2	23

--

	RC SRC S LGS ALC

	10 11

25	40	40	
26 35			
36 45	41 45	41 45	
46 55	46 55	46 55	
56	56	56	


表 1.3-1 主な地震と耐震基準の変遷と被害

		12	7.9
			142,807 576,262
25			
		39 43	7.5 7.9
46			
		53	7.4
56			
		7.2	5,423 91,540

1.3-2 1.3-4

1.3-1

1.3-2 1.3-6

14%

58%

55

%

25

50%

56

第Ⅲ編 被害想定  
1. 建物被害の想定

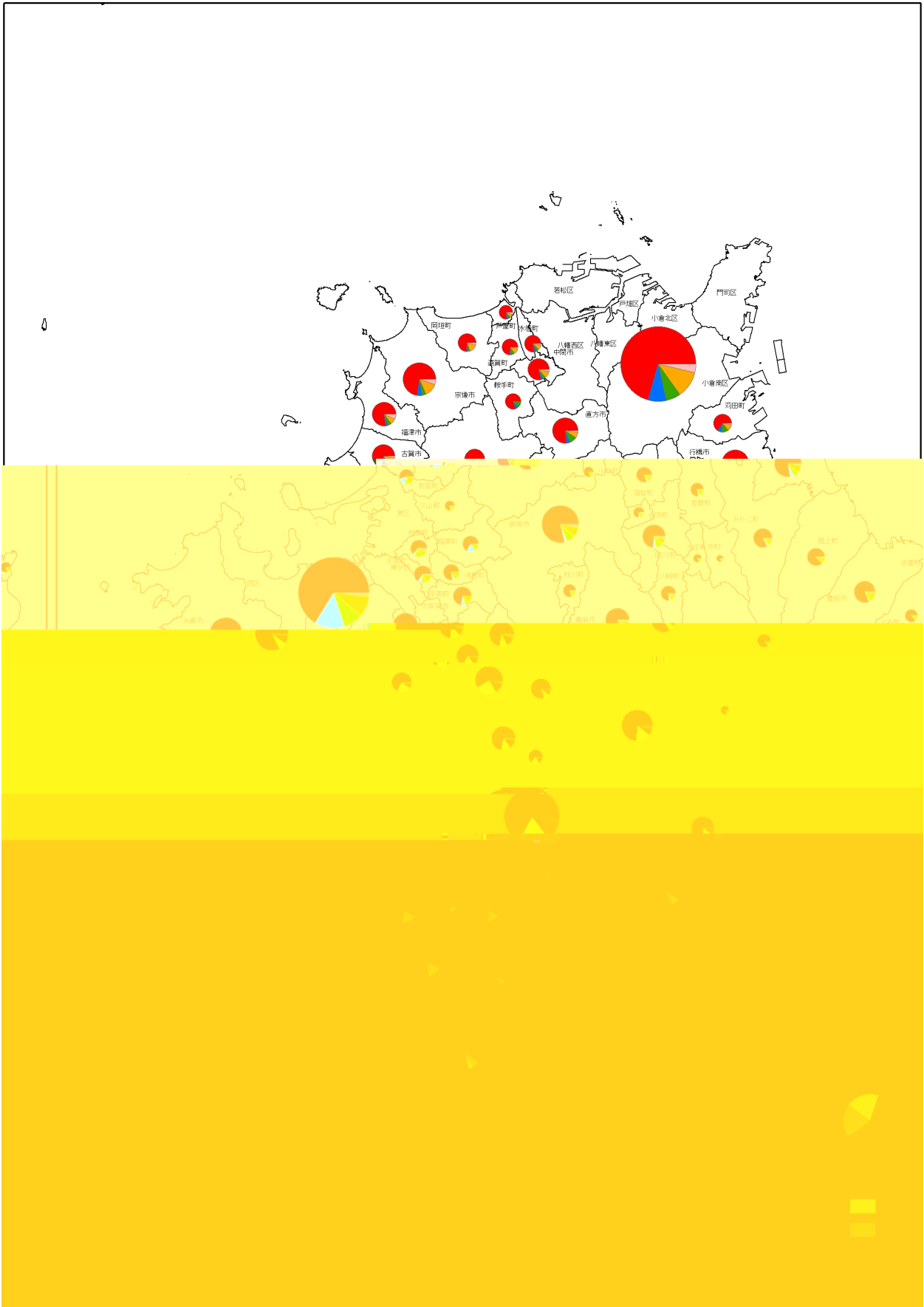


図 1.3-1 市町村別の主体構造別建物構成比図



第Ⅲ編 被害想定  
1. 建物被害の想定

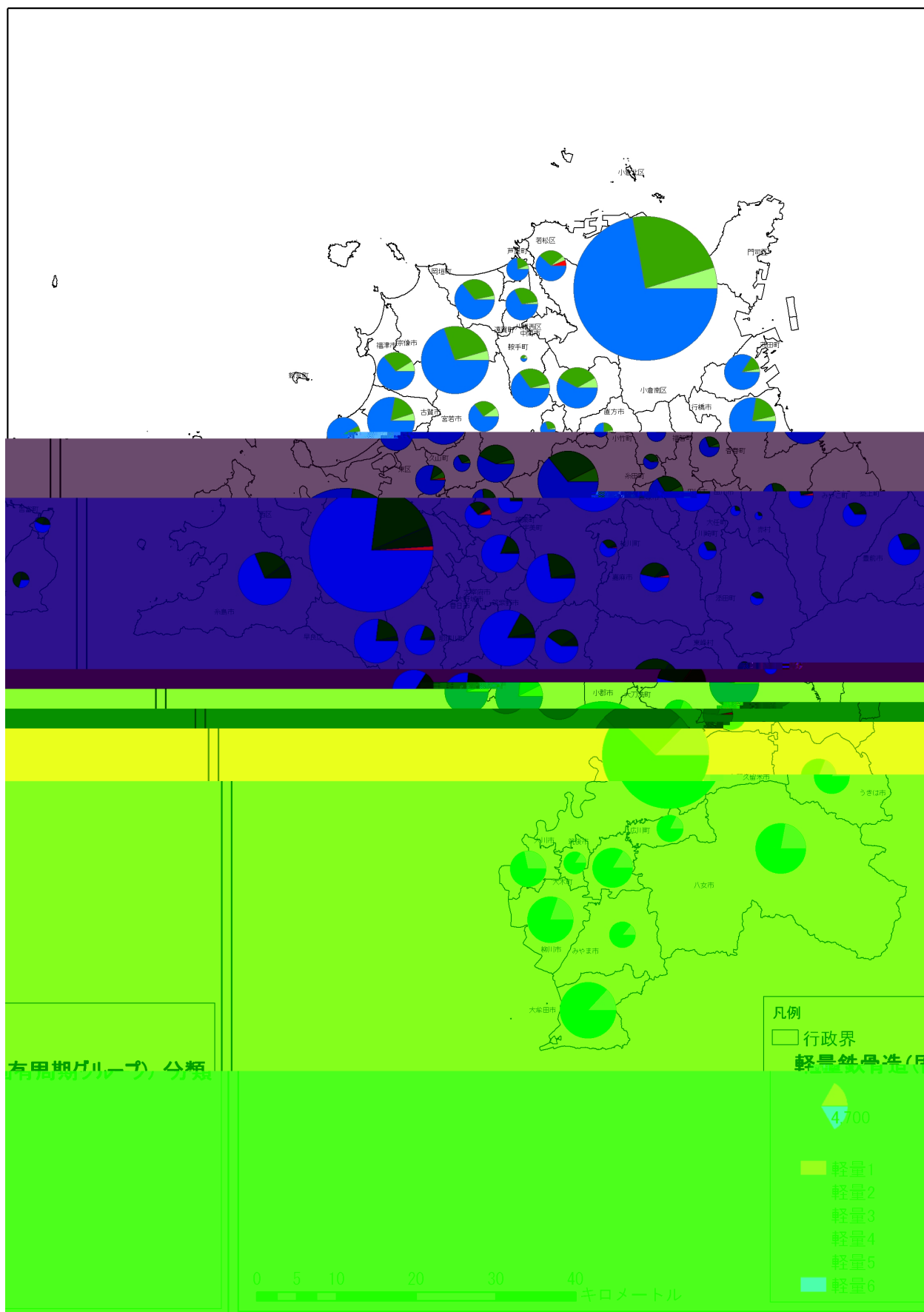


図 1.3-3 市町村別の軽量鉄骨造建物固有周期グループ別構成比図

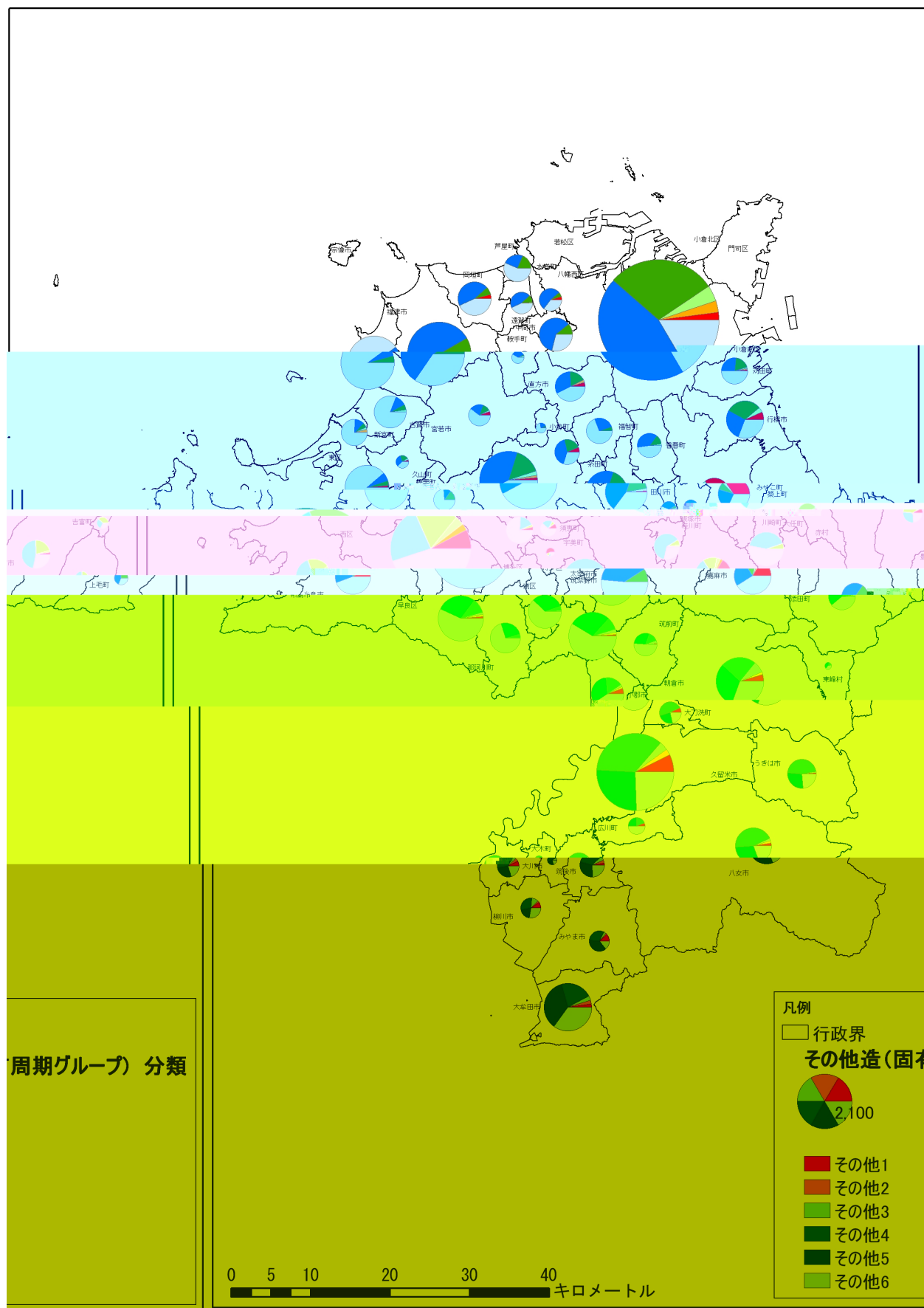


図 1.3-4 市町村別のその他建物固有周期グループ別構成比図

第Ⅲ編 被害想定  
1. 建物被害の想定

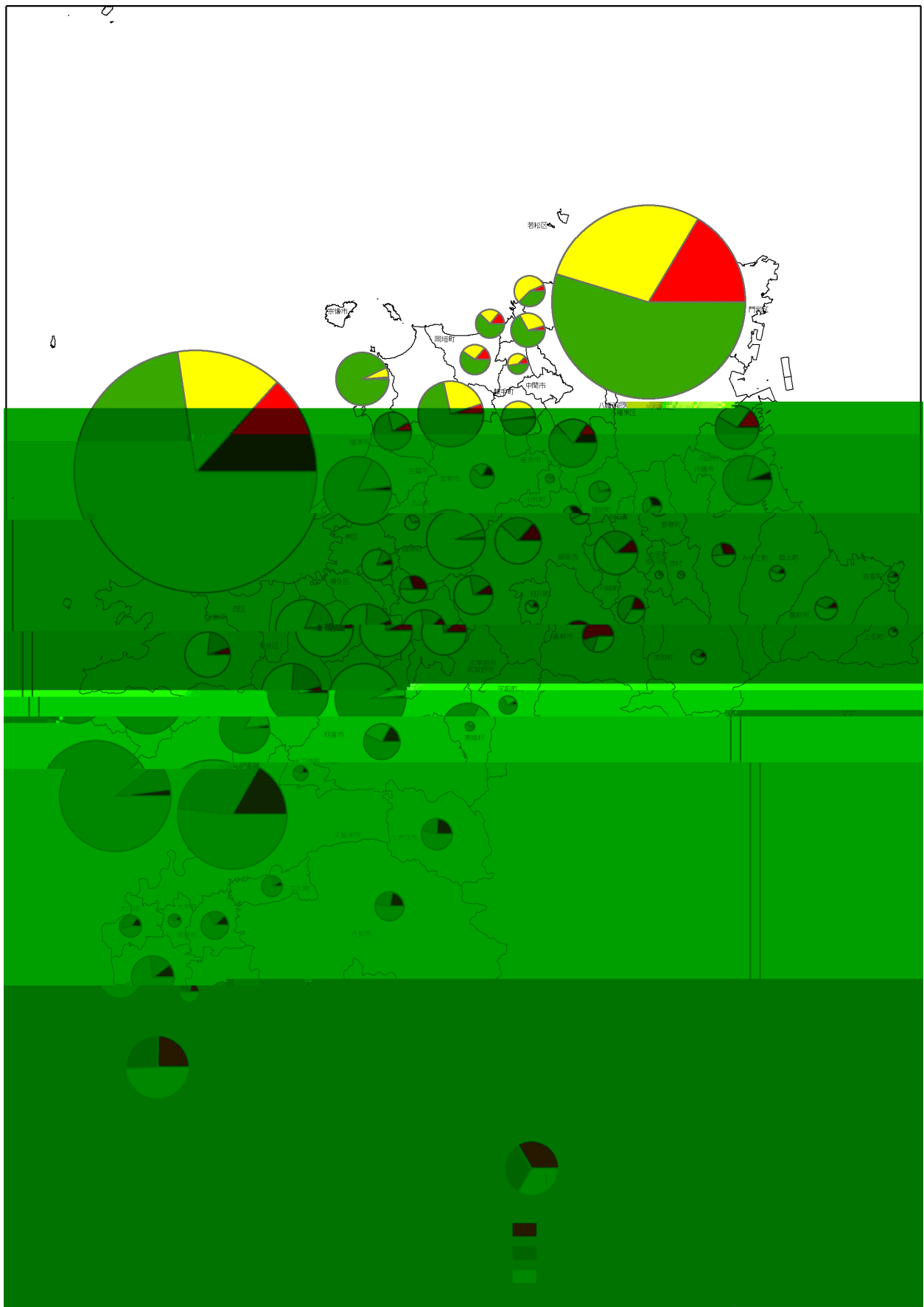


図 1.3-5 市町村別のRC系建物築年別構成比図



第Ⅲ編 被害想定  
1. 建物被害の想定

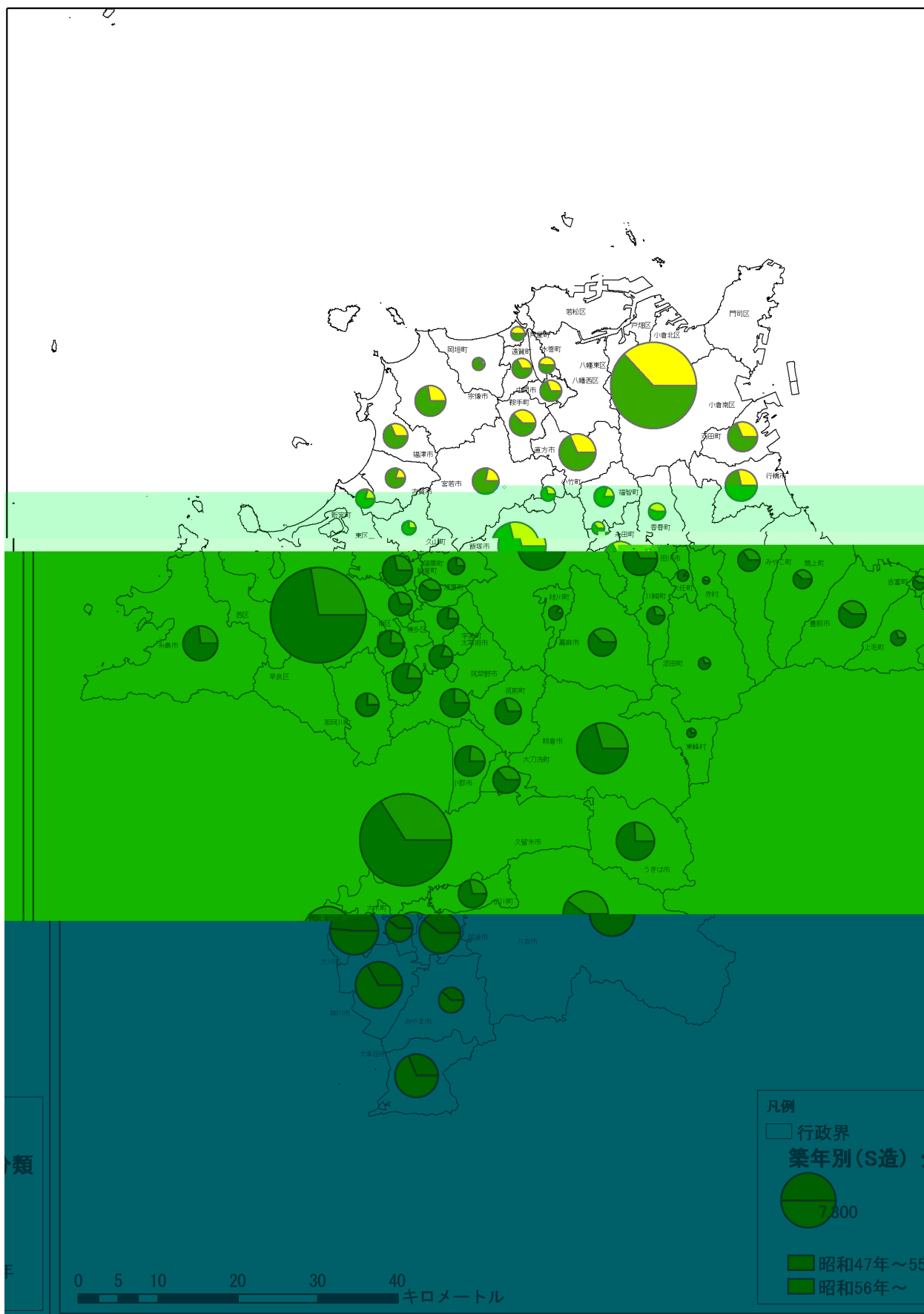


図 1.3-6 市町村別のS系建物築年別構成比図

第Ⅲ編 被害想定  
1. 建物被害の想定

表 1.3-2 建物現況表 (木造、SRC・RC造)

							SRC RC							
	S25	%	S26	55	%	S56	%	S46	%	S47	55	%	S56	%
100	29,054	14.6	102,007	51.3	67,870	34.1	198,931	3,710	16.5	6,484	28.8	12,326	54.7	22,520
130	16,679	9.9	73,490	43.6	78,267	46.5	168,436	4,660	13.2	4,983	14.2	25,564	72.6	35,207
202	7,870	15.8	25,147	50.6	16,666	33.5	49,683	592	24.6	623	25.9	1,191	49.5	2,406
203	8,325	8.2	50,527	49.6	42,985	42.2	101,836	1,195	16.8	2,235	31.4	3,695	51.9	7,125
204	4,743	18.9	9,524	37.9	10,875	43.3	25,142	211	15.2	292	21.0	885	63.8	1,388
205	9,506	17.3	22,980	41.8	22,539	41.0	55,025	181	14.0	313	24.1	802	61.9	1,296
206	3,010	15.3	8,051	41.0	8,586	43.7	19,647	124	11.0	283	25.1	720	63.9	1,127
207	4,630	13.6	16,658	49.0	12,735	37.4	34,023	110	10.3	179	16.8	776	72.9	1,065
210	11,819	24.4	21,686	44.8	14,863	30.7	48,368	110	22.0	128	25.5	263	52.5	501
211	2,340	11.1	8,805	41.8	9,898	47.0	21,043	57	12.6	93	20.6	302	66.8	452
212	3,087	15.7	11,058	56.2	5,521	28.1	19,666	43	15.0	109	38.1	134	46.9	286
213	4,431	15.4	11,807	41.1	12,486	43.5	28,723	90	6.2	210	14.5	1,147	79.3	1,447
214	3,831	20.0	7,822	40.9	7,462	39.0	19,115	32	10.4	102	33.1	174	56.5	308
215	1,647	9.2	9,011	50.2	7,285	40.6	17,943	29	4.2	196	28.5	462	67.2	687
216	487	2.4	9,191	45.0	10,743	52.6	20,421	35	2.3	226	15.2	1,229	82.5	1,490
217	1,283	5.6	8,805	38.6	12,737	55.8	22,825	144	2.0	646	8.8	6,592	89.3	7,382
218	397	1.7	9,790	42.8	12,680	55.5	22,867	92	4.2	426	19.7	1,649	76.1	2,167
219	294	1.8	7,029	43.6	8,813	54.6	16,136	54	2.8	310	15.9	1,588	81.4	1,952
220	2,913	7.3	15,298	38.4	21,592	54.2	39,803	127	5.0	602	23.5	1,831	71.5	2,560
221	414	1.9	9,846	45.3	11,467	52.8	21,727	109	6.6	300	18.1	1,250	75.4	1,659
223	1,231	6.7	6,667	36.3	10,492	57.1	18,390	59	2.1	423	15.4	2,267	82.5	2,749
224	1,922	8.6	8,280	37.2	12,031	54.1	22,233	70	8.2	172	20.3	607	71.5	849
225	3,326	17.2	9,118	47.0	6,949	35.8	19,393	140	24.4	125	21.8	308	53.8	573
226	4,400	25.4	6,416	37.0	6,506	37.6	17,321	62	17.4	76	21.3	219	61.3	357
227	7,269	30.5	9,131	38.3	7,440	31.2	23,840	324	53.9	96	16.0	181	30.1	601
228	8,158	23.2	20,620	58.7	6,332	18.0	35,110	132	17.1	200	25.9	439	56.9	771
229	3,614	24.4	5,501	37.2	5,673	38.4	14,788	53	21.8	64	26.3	126	51.9	243
230	6,884	15.5	15,782	35.5	21,770	49.0	44,436	68	5.5	219	17.7	949	76.8	1,236
305	1,382	10.6	4,999	37.8	6,750	51.6	13,071	40	1.4	135	4.6	2,774	94.1	2,949
341	1,320	10.6	3,885	31.2	7,253	58.2	12,457	147	12.0	188	15.3	894	72.7	1,229
342	637	7.3	4,046	46.4	4,031	46.3	8,714	24	1.2	92	4.4	1,954	94.4	2,070
343	667	6.8	4,427	45.1	4,713	48.1	9,807	85	9.3	171	18.7	659	72.0	915
344	678	6.8	3,058	30.6	6,242	62.6	9,978	138	30.1	88	19.2	232	50.7	458
345	643	10.9	2,215	37.7	3,015	51.3	5,873	19	1.1	100	5.9	1,562	92.9	1,681
348	640	16.6	1,373	35.6	1,848	47.9	3,861	6	4.5	36	27.3	90	68.2	132
349	1,276	14.0	3,951	43.3	3,891	42.7	9,118	37	6.6	72	12.6	459	80.8	568
381	495	6.7	3,782	51.1	3,129	42.2	7,406	68	13.9	116	23.7	306	62.4	490
382	2,611	24.6	3,748	35.3	4,255	40.1	10,614	38	6.8	314	56.2	207	37.0	559
383	892	7.3	5,177	42.6	6,079	50.0	12,148	72	13.7	140	26.6	315	59.8	527
384	534	5.7	3,456	37.0	5,348	57.3	9,338	31	12.4	100	40.0	119	47.6	250
401	569	13.8	1,470	35.5	2,098	50.7	4,137	4	8.9	11	24.4	30	66.7	45
402	2,278	24.0	3,240	34.1	3,987	41.9	9,505	14	2.0	351	50.0	337	48.0	702
421	674	10.3	2,571	39.3	3,303	50.4	6,548	17	16.0	21	19.8	68	64.2	106
447	1,999	12.8	5,939	38.0	7,689	49.2	15,627	17	8.9	49	25.5	126	65.6	192
448	686	25.2	1,102	40.5	934	34.3	2,722	3	6.1	12	24.5	34	69.4	49
503	1,728	27.5	2,265	36.1	2,286	36.4	6,279	22	17.5	33	26.2	71	56.3	126
522	935	13.0	3,127	43.6	3,115	43.4	7,177	14	14.6	24	25.0	58	60.4	96
544	1,383	15.1	3,466	37.7	4,338	47.2	9,187	22	8.6	43	16.6	194	74.8	259
601	803	11.3	3,303	46.6	2,981	42.1	7,087	67	30.2	72	32.4	83	37.4	222
602	1,916	26.3	2,915	40.0	2,451	33.7	7,282	20	15.4	32	24.6	78	60.0	130
604	505	11.7	1,641	37.9	2,187	50.5	4,333	69	32.1	56	26.0	90	41.9	215
605	908	10.7	3,354	39.6	4,207	49.7	8,469	93	20.3	205	44.8	160	34.9	458
608	360	13.0	1,033	37.2	1,381	49.8	2,774	3	8.1	5	13.5	29	78.4	37
609	448	22.7	767	38.9	759	38.4	1,974	1	3.6	9	32.1	18	64.3	28
610	1,341	13.9	2,226	23.1	6,063	63.0	9,630	14	5.2	67	24.9	188	69.9	269
621	1,396	13.0	4,100	38.3	5,212	48.7	10,708	168	14.9	298	26.5	659	58.6	1,125
625	4,135	26.9	5,985	39.0	5,229	34.1	15,349	99	29.6	71	21.3	164	49.1	334
642	454	9.7	2,349	50.3	1,871	40.0	4,674	15	20.8	18	25.0	39	54.2	72
646	1,678	23.5	2,736	38.3	2,725	38.2	7,139	10	20.3	5	11.2	34	68.5	49
647	4,118	30.6	5,600	41.6	3,735	27.8	13,453	18	12.5	41	28.5	85	59.0	144
	193,653	13.7	623,292	44.1	596,366	42.2	1,413,311	14,008	12.0	23,091	19.8	79,791	68.3	116,890

第Ⅲ編 被害想定  
1. 建物被害の想定

表 1.3-3 建物現況表 (S造、軽量鉄骨造)

	S						S25						S47						S56					
	S55	%	S56	%			S25	%	S47	55	%	S56	%			S56	%							
100	6,595	36.9	11,271	63.1	17,866	1	0.0	9,109	28.0	23,443	72.0	32,553												
130	6,092	27.6	15,960	72.4	22,052	258	1.1	5,340	22.2	18,500	76.8	24,098												
202	1,416	31.1	3,139	68.9	4,555	7	0.1	1,883	38.2	3,041	61.7	4,931												
203	6,906	34.1	13,375	65.9	20,281	9	0.1	6,779	37.7	11,172	62.2	17,959												
204	1,008	31.3	2,212	68.7	3,220	12	0.5	1,092	41.9	1,502	57.6	2,606												
205	1,603	29.0	3,923	71.0	5,526	9	0.2	2,064	35.9	3,674	63.9	5,747												
206	904	32.3	1,892	67.7	2,796	4	0.2	648	33.5	1,281	66.3	1,933												
207	1,751	33.4	3,491	66.6	5,242	27	0.8	1,379	41.4	1,928	57.8	3,334												
210	1,945	40.0	2,919	60.0	4,864	10	0.3	1,912	48.2	2,046	51.6	3,968												
211	1,612	39.1	2,511	60.9	4,123	1	0.0	801	32.5	1,661	67.4	2,463												
212	2,758	48.5	2,931	51.5	5,689	2	0.1	1,116	55.3	901	44.6	2,019												
213	671	28.1	1,715	71.9	2,386	1	0.0	770	22.5	2,645	77.4	3,416												
214	692	39.7	1,052	60.3	1,744	7	0.4	499	31.3	1,086	68.2	1,592												
215	336	30.9	753	69.1	1,089	0	0.0	830	35.2	1,528	64.8	2,358												
216	518	23.9	1,649	76.1	2,167	5	0.1	839	23.9	2,665	75.9	3,509												
217	501	25.3	1,477	74.7	1,978	6	0.1	860	17.3	4,102	82.6	4,968												
218	390	23.8	1,252	76.2	1,642	8	0.3	472	15.7	2,532	84.1	3,012												
219	473	21.8	1,697	78.2	2,170	0	0.0	710	23.4	2,321	76.6	3,031												
220	619	27.6	1,622	72.4	2,241	3	0.0	2,188	30.5	4,974	69.4	7,165												
221	262	19.4	1,087	80.6	1,349	0	0.0	1,038	27.2	2,774	72.8	3,812												
223	181	19.5	747	80.5	928	0	0.0	797	22.6	2,728	77.4	3,525												
224	450	31.2	993	68.8	1,443	4	0.2	811	36.1	1,433	63.7	2,248												
225	902	25.8	2,590	74.2	3,492	6	0.3	1,197	61.7	736	38.0	1,939												
226	366	22.1	1,289	77.9	1,655	0	0.0	505	35.4	921	64.6	1,426												
227	667	36.8	1,145	63.2	1,812	34	2.5	589	43.9	719	53.6	1,342												
228	1,839	29.2	4,449	70.8	6,288	1	0.0	1,788	47.2	2,003	52.8	3,792												
229	602	38.3	970	61.7	1,572	1	0.1	305	29.4	732	70.5	1,038												
230	783	27.0	2,115	73.0	2,898	1	0.0	1,382	31.2	3,052	68.8	4,435												
305	315	24.5	973	75.5	1,288	12	0.9	272	19.3	1,123	79.8	1,407												
341	243	22.4	843	77.6	1,086	5	0.2	427	19.1	1,803	80.7	2,235												
342	177	24.8	537	75.2	714	0	0.0	246	26.6	678	73.4	924												
343	401	30.0	935	70.0	1,336	4	0.2	935	42.9	1,240	56.9	2,179												
344	442	39.4	680	60.6	1,122	72	6.6	321	29.8	686	63.6	1,079												
345	182	20.5	707	79.5	889	0	0.0	137	7.9	1,593	92.1	1,730												
348	117	25.0	351	75.0	468	0	0.0	147	33.1	297	66.9	444												
349	606	28.0	1,557	72.0	2,163	33	2.4	258	18.5	1,102	79.1	1,394												
381	225	48.2	242	51.8	467	0	0.0	207	25.8	596	74.2	803												
382	296	47.2	331	52.8	627	93	6.3	473	32.1	907	61.6	1,473												
383	36	9.6	340	90.4	376	0	0.0	893	35.6	1,613	64.4	2,506												
384	310	32.6	642	67.4	952	0	0.0	528	32.8	1,083	67.2	1,611												
401	144	29.1	351	70.9	495	0	0.0	110	30.0	257	70.0	367												
402	595	37.0	1,012	63.0	1,607	0	0.0	36	48.6	38	51.4	74												
421	68	14.7	395	85.3	463	9	1.9	167	35.1	300	63.0	476												
447	484	29.7	1,148	70.3	1,632	2	0.1	717	40.3	1,061	59.6	1,780												
448	54	28.1	138	71.9	192	2	0.8	109	43.6	139	55.6	250												
503	634	36.6	1,097	63.4	1,731	41	2.9	652	45.6	736	51.5	1,429												
522	696	39.6	1,061	60.4	1,757	0	0.0	328	41.9	455	58.1	783												
544	544	28.3	1,381	71.7	1,925	0	0.0	475	43.3	622	56.7	1,097												
601	306	44.5	382	55.5	688	0	0.0	201	30.9	449	69.1	650												
602	104	29.1	254	70.9	358	0	0.0	114	41.5	161	58.5	275												
604	140	36.7	241	63.3	381	0	0.0	145	40.5	213	59.5	358												
605	223	28.3	566	71.7	789	0	0.0	160	31.7	344	68.3	504												
608	34	11.7	257	88.3	291	0	0.0	42	27.8	109	72.2	151												
609	52	45.6	62	54.4	114	0	0.0	27	29.0	66	71.0	93												
610	191	19.9	767	80.1	958	1	0.2	140	24.9	422	75.0	563												
621	661	31.0	1,470	69.0	2,131	1	0.1	316	16.0	1,651	83.9	1,968												
625	388	34.6	734	65.4	1,122	30	3.2	243	25.7	674	71.2	947												
642	175	40.4	258	59.6	433	0	0.0	171	43.4	223	56.6	394												
646	153	28.4	385	71.6	538	0	0.0	292	70.4	122	29.6	414												
647	310	38.2	501	61.8	811	5	0.6	307	34.5	578	64.9	890												
	52,149	32.0	110,825	68.0	162,974	727	0.4	57,298	30.9	127,442	68.7	185,467												

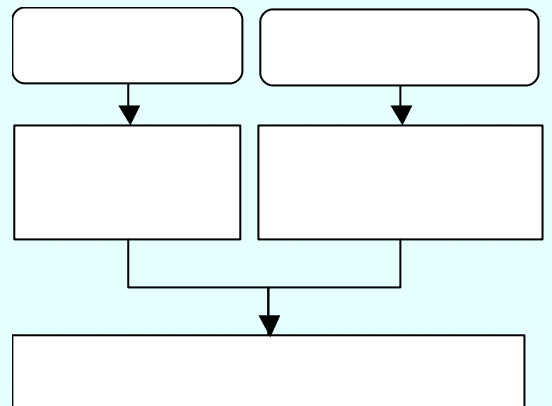
第Ⅲ編 被害想定  
1. 建物被害の想定

表 1.3-4 建物現況表（その他）

	S25		S26		S56		
		%	55	%		%	
100	210	2.0	8,367	81.4	1,699	16.5	10,276
130	353	7.7	2,188	47.5	2,069	44.9	4,610
202	36	2.2	1,006	62.8	560	35.0	1,602
203	316	7.5	2,855	68.0	1,026	24.5	4,197
204	29	4.7	331	53.4	260	41.9	620
205	33	1.4	1,315	56.3	987	42.3	2,335
206	14	1.1	781	63.6	433	35.3	1,228
207	27	9.5	178	62.9	78	27.6	283
210	26	2.8	711	77.8	177	19.4	914
211	11	2.6	304	72.9	102	24.5	417
212	25	7.6	238	71.9	68	20.5	331
213	65	6.6	618	62.7	303	30.7	986
214	12	2.0	410	69.7	166	28.2	588
215	1	0.1	550	71.1	223	28.8	774
216	44	5.9	400	53.5	303	40.6	747
217	19	1.2	648	40.2	946	58.6	1,613
218	22	1.5	597	41.5	819	57.0	1,438
219	2	0.3	291	37.9	474	61.8	767
220	9	0.3	1,866	65.4	977	34.3	2,852
221	2	0.1	753	48.9	785	51.0	1,540
223	2	0.3	142	19.6	579	80.1	723
224	1	0.1	202	10.2	1,787	89.8	1,991
225	7	1.2	447	75.5	138	23.3	592
226	17	5.2	114	34.8	197	60.1	328
227	156	16.3	407	42.6	392	41.0	955
228	74	4.6	1,050	64.9	493	30.5	1,617
229	34	11.6	218	74.4	41	14.0	293
230	70	8.0	418	47.9	384	44.0	872
305	6	0.9	190	29.8	442	69.3	638
341	29	55.8	10	19.2	13	25.0	52
342	3	0.9	84	26.3	232	72.7	319
343	20	3.8	108	20.7	393	75.5	521
344	17	9.2	53	28.9	114	61.9	185
345	1	0.2	116	24.2	363	75.6	480
348	5	4.4	65	57.5	43	38.1	113
349	23	1.7	142	10.3	1,207	88.0	1,372
381	1	0.2	227	43.6	293	56.2	521
382	16	4.5	217	60.6	125	34.9	358
383	32	4.1	418	53.2	336	42.7	786
384	3	0.9	191	56.7	143	42.4	337
401	1	1.4	19	27.5	49	71.0	69
402	0	0.0	46	41.1	66	58.9	112
421	1	0.2	350	71.6	138	28.2	489
447	5	1.4	173	47.4	187	51.2	365
448	0	0.0	21	63.6	12	36.4	33
503	23	6.9	239	72.0	70	21.1	332
522	0	0.0	47	79.7	12	20.3	59
544	11	5.5	89	44.7	99	49.7	199
601	2	0.5	212	52.7	188	46.8	402
602	3	0.6	305	60.8	194	38.6	502
604	26	6.0	280	64.5	128	29.5	434
605	7	0.8	398	47.0	442	52.2	847
608	0	0.0	74	44.0	94	56.0	168
609	0	0.0	68	46.6	78	53.4	146
610	4	0.9	144	30.9	318	68.2	466
621	8	1.7	229	48.0	240	50.3	477
625	245	34.9	234	33.3	223	31.8	702
642	1	1.0	67	67.0	32	32.0	100
646	0	0.0	89	68.7	40	31.3	129
647	20	7.5	185	69.0	63	23.5	268
	2,130	3.7	32,495	56.5	22,844	39.8	57,469

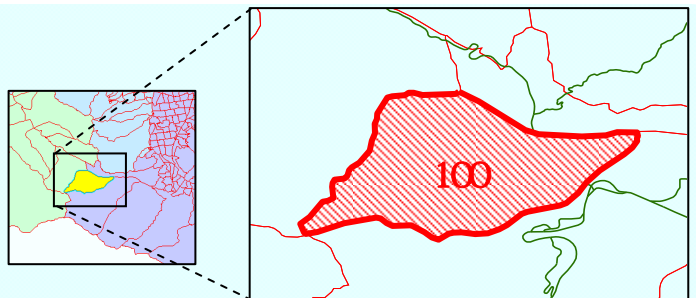
1.3-7

【行政区毎の建物構造別建物数の集計】



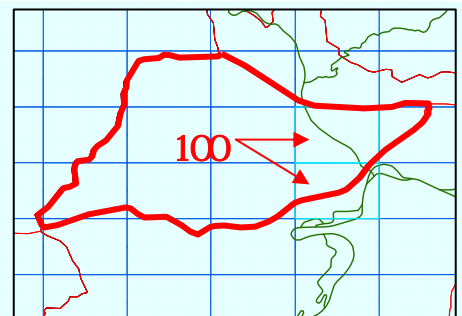
【①丁目字の行政区】

100



【②250m メッシュ配分】

95



【③配分の例】

$$100( ) \times 95(\%) = 95( )$$

$$100( ) \times ( ) = ( )$$

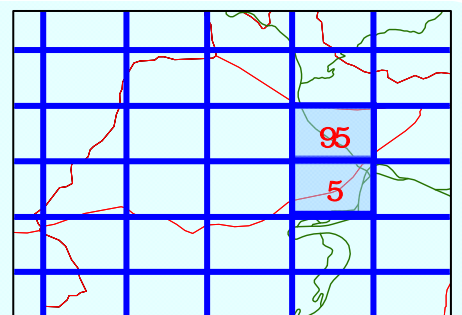


図 1.3-7 建物配分及びメッシュ評価イメージ

### 第Ⅲ編 被害想定

#### 1. 建物被害の想定

##### 1.4 建物被害の想定結果

1)

	6,930	5,090
		6,880
	7,110	6,250
		6,170
	390	180
120		
	4,060	5,280
		1,740
	640	430

2)

	3,840	4,370
		1,080
	610	570
490	330	
	11,170	12,570
		1,810
	1,560	1,290
1,020		
	13,380	13,820
		2,730
	1,430	1,410
1,190		

第Ⅲ編 被害想定  
1. 建物被害の想定

3)

	7,320	6,670
	2,330	3,910
180		
	15,180	13,880
	4,520	
	1,990	1,810
1,010		
	17,970	15,020
	3,740	
	2,180	1,740
1,480	1,510	1,500
	1,200	

4)

	23,100	12,490
	5,450	
	4,970	3,180
	2,020	1,610
1,530	1,160	
	25,570	11,560
	6,750	
	4,820	4,110
2,670	1,830	1,570
	18,220	9,360
	6,680	
	4,510	2,410
1,540		

第Ⅲ編 被害想定  
1. 建物被害の想定

5)

	5,070	5,450 4,390	3,840	
				18.3%
	16.3%	15.0%	14.5%	

1.4 1(1) 1.4 1(13)

1.4 1 1.4 13

1)



第Ⅲ編 被害想定  
1. 建物被害の想定

表 1.4-1(1) 建物被害の想定結果【小倉東断層（破壊開始：南西下部）】

	( )				( )								( )				(%)	
	6,310	4,172	SRC 115	RC 281	3	65	286	244	166	127	570	717	6,880	4,889	3.2%	2.1%	0.7%	0.9%
100	0	0	0	0	0	0	0	0	0	0	0	0	0	0	0.0%	0.0%	0.0%	0.0%
130	0	0	0	0	0	0	0	0	0	0	0	0	0	0	0.0%	0.0%	0.0%	0.0%
202	0	0	0	0	0	0	0	0	0	0	0	0	0	0	0.0%	0.0%	0.0%	0.0%
203	0	0	0	0	0	0	0	0	0	0	0	0	0	0	0.0%	0.0%	0.0%	0.0%
204	0	0	0	0	0	0	0	0	0	0	0	0	0	0	0.0%	0.0%	0.0%	0.0%
205	0	1	0	0	0	0	0	0	0	0	0	0	0	1	0.0%	0.0%	0.0%	0.0%
206	0	0	0	0	0	0	0	0	0	0	0	0	0	0	0.0%	0.0%	0.0%	0.0%
207	0	0	0	0	0	0	0	0	0	0	0	0	0	0	0.0%	0.0%	0.0%	0.0%
210	0	0	0	0	0	0	0	0	0	0	0	0	0	0	0.0%	0.0%	0.0%	0.0%
211	0	0	0	0	0	0	0	0	0	0	0	0	0	0	0.0%	0.0%	0.0%	0.0%
212	0	0	0	0	0	0	0	0	0	0	0	0	0	0	0.0%	0.0%	0.0%	0.0%
213	2	19	0	0	0	0	0	0	0	1	0	1	2	20	0.0%	0.1%	0.0%	0.0%
214	0	0	0	0	0	0	0	0	0	0	0	0	0	0	0.0%	0.0%	0.0%	0.0%
215	0	0	0	0	0	0	0	0	0	0	0	0	0	0	0.0%	0.0%	0.0%	0.0%
216	0	0	0	0	0	0	0	0	0	0	0	0	0	0	0.0%	0.0%	0.0%	0.0%
217	0	0	0	0	0	0	0	0	0	0	0	0	0	0	0.0%	0.0%	0.0%	0.0%
218	0	0	0	0	0	0	0	0	0	0	0	0	0	0	0.0%	0.0%	0.0%	0.0%
219	0	0	0	0	0	0	0	0	0	0	0	0	0	0	0.0%	0.0%	0.0%	0.0%
220	0	0	0	0	0	0	0	0	0	0	0	0	0	0	0.0%	0.0%	0.0%	0.0%
221	0	0	0	0	0	0	0	0	0	0	0	0	0	0	0.0%	0.0%	0.0%	0.0%
223	0	0	0	0	0	0	0	0	0	0	0	0	0	0	0.0%	0.0%	0.0%	0.0%
224	0	0	0	0	0	0	0	0	0	0	0	0	0	0	0.0%	0.0%	0.0%	0.0%
225	0	0	0	0	0	0	0	0	0	0	0	0	0	0	0.0%	0.0%	0.0%	0.0%
226	2	21	0	0	0	0	0	0	0	0	0	0	2	21	0.0%	0.1%	0.0%	0.0%
227	0	0	0	0	0	0	0	0	0	0	0	0	0	0	0.0%	0.0%	0.0%	0.0%
228	0	0	0	0	0	0	0	0	0	0	0	0	0	0	0.0%	0.0%	0.0%	0.0%
229	0	0	0	0	0	0	0	0	0	0	0	0	0	0	0.0%	0.0%	0.0%	0.0%
230	0	0	0	0	0	0	0	0	0	0	0	0	0	0	0.0%	0.0%	0.0%	0.0%
305	0	0	0	0	0	0	0	0	0	0	0	0	0	0	0.0%	0.0%	0.0%	0.0%
341	0	0	0	0	0	0	0	0	0	0	0	0	0	0	0.0%	0.0%	0.0%	0.0%
342	0	0	0	0	0	0	0	0	0	0	0	0	0	0	0.0%	0.0%	0.0%	0.0%
343	0	0	0	0	0	0	0	0	0	0	0	0	0	0	0.0%	0.0%	0.0%	0.0%
344	0	0	0	0	0	0	0	0	0	0	0	0	0	0	0.0%	0.0%	0.0%	0.0%
345	0	0	0	0	0	0	0	0	0	0	0	0	0	0	0.0%	0.0%	0.0%	0.0%
348	0	0	0	0	0	0	0	0	0	0	0	0	0	0	0.0%	0.0%	0.0%	0.0%
349	0	0	0	0	0	0	0	0	0	0	0	0	0	0	0.0%	0.0%	0.0%	0.0%
381	0	0	0	0	0	0	0	0	0	0	0	0	0	0	0.0%	0.0%	0.0%	0.0%
382	0	0	0	0	0	0	0	0	0	0	0	0	0	0	0.0%	0.0%	0.0%	0.0%
383	4	4	0	0	0	0	0	0	0	0	0	0	4	4	0.0%	0.0%	0.0%	0.0%
384	3	12	0	0	0	0	0	0	0	0	0	0	3	12	0.0%	0.1%	0.0%	0.0%
401	0	0	0	0	0	0	0	0	0	0	0	0	0	0	0.0%	0.0%	0.0%	0.0%
402	0	3	0	0	0	0	0	0	0	0	0	0	3	0	0.0%	0.0%	0.0%	0.0%
421	0	0	0	0	0	0	0	0	0	0	0	0	0	0	0.0%	0.0%	0.0%	0.0%
447	0	0	0	0	0	0	0	0	0	0	0	0	0	0	0.0%	0.0%	0.0%	0.0%
448	0	0	0	0	0	0	0	0	0	0	0	0	0	0	0.0%	0.0%	0.0%	0.0%
503	0	0	0	0	0	0	0	0	0	0	0	0	0	0	0.0%	0.0%	0.0%	0.0%
522	0	0	0	0	0	0	0	0	0	0	0	0	0	0	0.0%	0.0%	0.0%	0.0%
544	0	0	0	0	0	0	0	0	0	0	0	0	0	0	0.0%	0.0%	0.0%	0.0%
601	0	1	0	0	0	0	0	0	0	0	0	0	0	1	0.0%	0.0%	0.0%	0.0%
602	0	0	0	0	0	0	0	0	0	0	0	0	0	0	0.0%	0.0%	0.0%	0.0%
604	0	0	0	0	0	0	0	0	0	0	0	0	0	0	0.0%	0.0%	0.0%	0.0%
605	0	0	0	0	0	0	0	0	0	0	0	0	0	0	0.0%	0.0%	0.0%	0.0%
608	0	0	0	0	0	0	0	0	0	0	0	0	0	0	0.0%	0.0%	0.0%	0.0%
609	0	0	0	0	0	0	0	0	0	0	0	0	0	0	0.0%	0.0%	0.0%	0.0%
610	0	0	0	0	0	0	0	0	0	0	0	0	0	0	0.0%	0.0%	0.0%	0.0%
621	27	48	0	1	0	0	1	2	0	1	1	4	28	52	0.3%	0.4%	0.0%	0.1%
625	0	0	0	0	0	0	0	0	0	0	0	0	0	0	0.0%	0.0%	0.0%	0.0%
642	0	0	0	0	0	0	0	0	0	0	0	0	0	0	0.0%	0.0%	0.0%	0.0%
646	0	0	0	0	0	0	0	0	0	0	0	0	0	0	0.0%	0.0%	0.0%	0.0%
647	9	88	0	0	0	0	0	2	0	1	0	3	9	91	0.1%	0.7%	0.0%	0.1%
	6,357	4,369	115	282	3	65	287	248	166	130	571	725	6,928	5,094	0.4%	0.3%	0.1%	0.1%

第Ⅲ編 被害想定  
1. 建物被害の想定

表 1.4-1(2) 建物被害の想定結果【小倉東断層（破壊開始：中央下部）】

	( )		( )											( )		(%)		(%)	
			SRC	RC															
100	5,606	3,709	108	268	7	61	296	252	155	114	566	695	6,172	4,404	2.8%	1.9%	0.7%	0.8%	
130	0	0	0	1	0	0	0	0	0	0	0	0	1	0	0.0%	0.0%	0.0%	0.0%	
202	0	0	0	0	0	0	0	0	0	0	0	0	0	0	0.0%	0.0%	0.0%	0.0%	
203	0	0	0	0	0	0	0	0	0	0	0	0	0	0	0.0%	0.0%	0.0%	0.0%	
204	6	16	0	0	0	0	0	0	0	0	0	0	6	16	0.0%	0.1%	0.0%	0.0%	
205	31	83	0	0	0	0	0	4	1	2	1	6	32	89	0.1%	0.2%	0.0%	0.0%	
206	39	110	0	1	0	0	1	5	1	4	2	10	41	120	0.2%	0.6%	0.0%	0.1%	
207	0	0	0	0	0	0	0	0	0	0	0	0	0	0	0.0%	0.0%	0.0%	0.0%	
210	0	0	0	0	0	0	0	0	0	0	0	0	0	0	0.0%	0.0%	0.0%	0.0%	
211	0	0	0	0	0	0	0	0	0	0	0	0	0	0	0.0%	0.0%	0.0%	0.0%	
212	0	0	0	0	0	0	0	0	0	0	0	0	0	0	0.0%	0.0%	0.0%	0.0%	
213	109	309	0	1	0	0	3	11	4	8	7	20	116	329	0.4%	1.1%	0.1%	0.2%	
214	0	0	0	0	0	0	0	0	0	0	0	0	0	0	0.0%	0.0%	0.0%	0.0%	
215	0	11	0	0	0	0	0	0	0	0	0	0	0	11	0.0%	0.1%	0.0%	0.0%	
216	0	0	0	0	0	0	0	0	0	0	0	0	0	0	0.0%	0.0%	0.0%	0.0%	
217	0	0	0	0	0	0	0	0	0	0	0	0	0	0	0.0%	0.0%	0.0%	0.0%	
218	0	0	0	0	0	0	0	0	0	0	0	0	0	0	0.0%	0.0%	0.0%	0.0%	
219	0	0	0	0	0	0	0	0	0	0	0	0	0	0	0.0%	0.0%	0.0%	0.0%	
220	0	10	0	0	0	0	0	0	0	0	0	0	0	10	0.0%	0.0%	0.0%	0.0%	
221	0	0	0	0	0	0	0	0	0	0	0	0	0	0	0.0%	0.0%	0.0%	0.0%	
223	0	0	0	0	0	0	0	0	0	0	0	0	0	0	0.0%	0.0%	0.0%	0.0%	
224	0	0	0	0	0	0	0	0	0	0	0	0	0	0	0.0%	0.0%	0.0%	0.0%	
225	0	0	0	0	0	0	0	0	0	0	0	0	0	0	0.0%	0.0%	0.0%	0.0%	
226	35	106	0	0	0	0	0	0	0	0	0	0	35	106	0.2%	0.6%	0.0%	0.0%	
227	0	2	0	0	0	0	0	0	0	0	0	0	0	2	0.0%	0.0%	0.0%	0.0%	
228	0	0	0	0	0	0	0	0	0	0	0	0	0	0	0.0%	0.0%	0.0%	0.0%	
229	0	0	0	0	0	0	0	0	0	0	0	0	0	0	0.0%	0.0%	0.0%	0.0%	
230	0	0	0	0	0	0	0	0	0	0	0	0	0	0	0.0%	0.0%	0.0%	0.0%	
305	0	0	0	0	0	0	0	0	0	0	0	0	0	0	0.0%	0.0%	0.0%	0.0%	
341	0	0	0	0	0	0	0	0	0	0	0	0	0	0	0.0%	0.0%	0.0%	0.0%	
342	0	0	0	0	0	0	0	0	0	0	0	0	0	0	0.0%	0.0%	0.0%	0.0%	
343	0	0	0	0	0	0	0	0	0	0	0	0	0	0	0.0%	0.0%	0.0%	0.0%	
344	0	0	0	0	0	0	0	0	0	0	0	0	0	0	0.0%	0.0%	0.0%	0.0%	
345	0	0	0	0	0	0	0	0	0	0	0	0	0	0	0.0%	0.0%	0.0%	0.0%	
348	0	0	0	0	0	0	0	0	0	0	0	0	0	0	0.0%	0.0%	0.0%	0.0%	
349	0	0	0	0	0	0	0	0	0	0	0	0	0	0	0.0%	0.0%	0.0%	0.0%	
381	0	0	0	0	0	0	0	0	0	0	0	0	0	0	0.0%	0.0%	0.0%	0.0%	
382	0	2	0	0	0	0	0	0	0	0	0	0	0	2	0.0%	0.0%	0.0%	0.0%	
383	2	7	0	0	0	0	0	0	0	0	0	0	2	7	0.0%	0.1%	0.0%	0.0%	
384	7	19	0	0	0	0	0	0	0	0	0	0	7	19	0.1%	0.2%	0.0%	0.0%	
401	10	21	0	0	0	0	0	0	0	0	0	0	10	21	0.2%	0.5%	0.0%	0.0%	
402	12	56	0	0	0	0	0	0	0	0	0	0	12	56	0.1%	0.6%	0.0%	0.0%	
421	0	0	0	0	0	0	0	0	0	0	0	0	0	0	0.0%	0.0%	0.0%	0.0%	
447	0	8	0	0	0	0	0	1	0	0	0	1	0	9	0.0%	0.1%	0.0%	0.0%	
448	0	0	0	0	0	0	0	0	0	0	0	0	0	0	0.0%	0.0%	0.0%	0.0%	
503	0	0	0	0	0	0	0	0	0	0	0	0	0	0	0.0%	0.0%	0.0%	0.0%	
522	0	0	0	0	0	0	0	0	0	0	0	0	0	0	0.0%	0.0%	0.0%	0.0%	
544	0	0	0	0	0	0	0	0	0	0	0	0	0	0	0.0%	0.0%	0.0%	0.0%	
601	67	206	0	1	0	0	2	7	1	6	3	14	70	220	0.9%	2.9%	0.2%	0.7%	
602	0	0	0	0	0	0	0	0	0	0	0	0	0	0	0.0%	0.0%	0.0%	0.0%	
604	0	3	0	0	0	0	0	0	0	0	0	0	0	3	0.0%	0.1%	0.0%	0.0%	
605	0	0	0	0	0	0	0	0	0	0	0	0	0	0	0.0%	0.0%	0.0%	0.0%	
608	0	0	0	0	0	0	0	0	0	0	0	0	0	0	0.0%	0.0%	0.0%	0.0%	
609	5	10	0	0	0	0	0	0	0	0	0	0	5	10	0.3%	0.5%	0.0%	0.0%	
610	14	26	0	0	0	0	1	0	1	0	2	14	28	0.1%	0.3%	0.0%	0.1%		
621	171	140	1	4	0	1	5	8	2	3	8	16	179	156	1.6%	1.3%	0.1%	0.3%	
625	12	62	0	0	0	0	0	2	1	4	1	6	13	68	0.1%	0.4%	0.0%	0.2%	
642	0	0	0	0	0	0	0	0	0	0	0	0	0	0	0.0%	0.0%	0.0%	0.0%	
646	0	0	0	0	0	0	0	0	0	0	0	0	0	0	0.0%	0.0%	0.0%	0.0%	
647	378	542	0	1	0	1	10	15	5	7	15	24	393	566	2.8%	4.0%	0.7%	1.1%	
	6,504	5,458	109	277	7	63	317	306	170	149	603	795	7,107	6,253	0.5%	0.4%	0.1%	0.2%	

第Ⅲ編 被害想定  
1. 建物被害の想定

表 1.4-1(3) 建物被害の想定結果【小倉東断層（破壊開始：北東下部）】

	( )		( )										( )		(%)		(%)	
			SRC	RC														
100	1,598	1,866	25	95	0	6	70	116	44	55	139	272	1,737	2,138	0.8%	0.9%	0.2%	0.3%
130	0	0	0	2	0	0	0	0	0	0	0	2	0	2	0.0%	0.0%	0.0%	0.0%
202	0	0	0	0	0	0	0	0	0	0	0	0	0	0	0.0%	0.0%	0.0%	0.0%
203	0	0	0	0	0	0	0	0	0	0	0	0	0	0	0.0%	0.0%	0.0%	0.0%
204	19	47	0	0	0	0	0	1	0	0	0	1	19	48	0.1%	0.2%	0.0%	0.0%
205	225	198	0	0	0	0	7	11	5	5	12	16	237	214	0.4%	0.4%	0.1%	0.1%
206	273	297	1	4	0	0	10	15	9	12	20	31	293	328	1.4%	1.5%	0.3%	0.4%
207	0	0	0	0	0	0	0	0	0	0	0	0	0	0	0.0%	0.0%	0.0%	0.0%
210	0	0	0	0	0	0	0	0	0	0	0	0	0	0	0.0%	0.0%	0.0%	0.0%
211	0	0	0	0	0	0	0	0	0	0	0	0	0	0	0.0%	0.0%	0.0%	0.0%
212	0	0	0	0	0	0	0	0	0	0	0	0	0	0	0.0%	0.0%	0.0%	0.0%
213	211	460	0	1	0	1	7	18	6	12	13	32	224	492	0.7%	1.6%	0.2%	0.4%
214	0	7	0	0	0	0	0	0	0	0	0	0	0	7	0.0%	0.0%	0.0%	0.0%
215	0	1	0	0	0	0	0	0	0	0	0	0	0	1	0.0%	0.0%	0.0%	0.0%
216	0	0	0	0	0	0	0	0	0	0	0	0	0	0	0.0%	0.0%	0.0%	0.0%
217	0	0	0	0	0	0	0	0	0	0	0	0	0	0	0.0%	0.0%	0.0%	0.0%
218	0	0	0	0	0	0	0	0	0	0	0	0	0	0	0.0%	0.0%	0.0%	0.0%
219	0	0	0	1	0	0	0	0	0	0	0	1	0	1	0.0%	0.0%	0.0%	0.0%
220	0	4	0	0	0	0	0	0	0	0	0	0	0	4	0.0%	0.0%	0.0%	0.0%
221	0	1	0	0	0	0	0	0	0	0	0	0	0	1	0.0%	0.0%	0.0%	0.0%
223	0	0	0	0	0	0	0	0	0	0	0	0	0	0	0.0%	0.0%	0.0%	0.0%
224	0	0	0	0	0	0	0	0	0	0	0	0	0	0	0.0%	0.0%	0.0%	0.0%
225	0	0	0	0	0	0	0	0	0	0	0	0	0	0	0.0%	0.0%	0.0%	0.0%
226	91	156	0	0	0	0	0	1	0	1	0	2	91	158	0.5%	0.9%	0.0%	0.1%
227	5	30	0	0	0	0	0	0	0	1	0	1	5	31	0.0%	0.1%	0.0%	0.0%
228	0	45	0	0	0	0	0	1	0	1	0	2	0	47	0.0%	0.1%	0.0%	0.0%
229	0	0	0	0	0	0	0	0	0	0	0	0	0	0	0.0%	0.0%	0.0%	0.0%
230	0	0	0	0	0	0	0	0	0	0	0	0	0	0	0.0%	0.0%	0.0%	0.0%
305	0	0	0	0	0	0	0	0	0	0	0	0	0	0	0.0%	0.0%	0.0%	0.0%
341	0	0	0	0	0	0	0	0	0	0	0	0	0	0	0.0%	0.0%	0.0%	0.0%
342	0	0	0	0	0	0	0	0	0	0	0	0	0	0	0.0%	0.0%	0.0%	0.0%
343	0	0	0	0	0	0	0	0	0	0	0	0	0	0	0.0%	0.0%	0.0%	0.0%
344	0	0	0	0	0	0	0	0	0	0	0	0	0	0	0.0%	0.0%	0.0%	0.0%
345	0	0	0	0	0	0	0	0	0	0	0	0	0	0	0.0%	0.0%	0.0%	0.0%
348	0	0	0	0	0	0	0	0	0	0	0	0	0	0	0.0%	0.0%	0.0%	0.0%
349	0	0	0	0	0	0	0	0	0	0	0	0	0	0	0.0%	0.0%	0.0%	0.0%
381	0	0	0	0	0	0	0	0	0	0	0	0	0	0	0.0%	0.0%	0.0%	0.0%
382	0	0	0	0	0	0	0	0	0	0	0	0	0	0	0.0%	0.0%	0.0%	0.0%
383	4	4	0	0	0	0	0	0	0	0	0	0	4	4	0.0%	0.0%	0.0%	0.0%
384	5	15	0	0	0	0	0	0	0	0	0	0	5	15	0.1%	0.2%	0.0%	0.0%
401	26	29	0	0	0	0	0	0	0	0	0	0	26	29	0.6%	0.7%	0.0%	0.0%
402	5	39	0	0	0	0	0	0	0	0	0	0	5	39	0.1%	0.4%	0.0%	0.0%
421	0	0	0	0	0	0	0	0	0	0	0	0	0	0	0.0%	0.0%	0.0%	0.0%
447	9	40	0	0	0	0	1	2	0	1	1	3	10	43	0.1%	0.3%	0.0%	0.1%
448	0	0	0	0	0	0	0	0	0	0	0	0	0	0	0.0%	0.0%	0.0%	0.0%
503	0	0	0	0	0	0	0	0	0	0	0	0	0	0	0.0%	0.0%	0.0%	0.0%
522	0	0	0	0	0	0	0	0	0	0	0	0	0	0	0.0%	0.0%	0.0%	0.0%
544	0	0	0	0	0	0	0	0	0	0	0	0	0	0	0.0%	0.0%	0.0%	0.0%
601	408	386	1	2	0	1	13	19	12	16	26	38	434	424	5.8%	5.4%	1.3%	1.9%
602	4	15	0	0	0	0	0	0	0	0	0	0	4	15	0.1%	0.2%	0.0%	0.0%
604	50	104	0	0	0	0	1	3	3	8	4	11	54	115	1.2%	2.4%	0.3%	0.8%
605	0	0	0	0	0	0	0	0	0	0	0	0	0	0	0.0%	0.0%	0.0%	0.0%
608	0	5	0	0	0	0	0	0	0	0	0	0	0	5	0.0%	0.2%	0.0%	0.0%
609	17	36	0	0	0	0	0	0	0	0	0	0	17	36	0.9%	1.8%	0.0%	0.0%
610	52	78	0	0	0	0	1	2	1	2	2	4	54	82	0.5%	0.8%	0.1%	0.2%
621	129	123	1	2	0	0	3	5	2	2	6	9	135	132	1.2%	1.1%	0.1%	0.2%
625	63	209	0	1	0	0	2	9	4	13	6	23	69	232	0.4%	1.4%	0.2%	0.7%
642	0	0	0	0	0	0	0	0	0	0	0	0	0	0	0.0%	0.0%	0.0%	0.0%
646	0	0	0	0	0	0	0	0	0	0	0	0	0	0	0.0%	0.0%	0.0%	0.0%
647	617	608	0	1	0	1	15	17	8	8	23	27	640	635	4.6%	4.5%	1.1%	1.3%
	3,811	4,803	28	109	0	9	130	220	94	137	252	475	4,063	5,278	0.3%	0.3%	0.0%	0.1%

第Ⅲ編 被害想定  
1. 建物被害の想定

表 1.4-1(4) 建物被害の想定結果【西山断層（破壊開始：南東下部）】

	( )		( )										( )		(%)		(%)	
			SRC	RC														
100	318	756	1	7	0	0	3	15	4	15	8	37	326	793	0.2%	0.4%	0.0%	0.0%
130	84	264	29	64	1	16	2	9	1	4	33	93	117	357	0.0%	0.2%	0.0%	0.1%
202	0	0	0	0	0	0	0	0	0	0	0	0	0	0	0.0%	0.0%	0.0%	0.0%
203	0	2	0	0	0	0	0	0	0	0	0	0	0	2	0.0%	0.0%	0.0%	0.0%
204	4	8	0	0	0	0	0	0	0	0	0	0	4	8	0.0%	0.0%	0.0%	0.0%
205	219	229	0	0	0	0	5	10	4	5	9	15	228	244	0.4%	0.4%	0.1%	0.1%
206	1	12	0	0	0	0	0	0	0	1	0	1	1	13	0.0%	0.1%	0.0%	0.0%
207	0	0	0	0	0	0	0	0	0	0	0	0	0	0	0.0%	0.0%	0.0%	0.0%
210	0	0	0	0	0	0	0	0	0	0	0	0	0	0	0.0%	0.0%	0.0%	0.0%
211	0	0	0	0	0	0	0	0	0	0	0	0	0	0	0.0%	0.0%	0.0%	0.0%
212	0	0	0	0	0	0	0	0	0	0	0	0	0	0	0.0%	0.0%	0.0%	0.0%
213	0	0	0	0	0	0	0	0	0	0	0	0	0	0	0.0%	0.0%	0.0%	0.0%
214	0	0	0	0	0	0	0	0	0	0	0	0	0	0	0.0%	0.0%	0.0%	0.0%
215	3	20	0	0	0	0	0	0	0	0	0	0	3	20	0.0%	0.1%	0.0%	0.0%
216	0	2	0	0	0	0	0	0	0	0	0	0	0	2	0.0%	0.0%	0.0%	0.0%
217	0	1	0	0	0	0	0	0	0	0	0	0	0	1	0.0%	0.0%	0.0%	0.0%
218	0	0	0	1	0	0	0	0	0	0	0	1	0	1	0.0%	0.0%	0.0%	0.0%
219	0	1	3	6	1	10	0	0	0	0	4	16	4	17	0.0%	0.0%	0.1%	0.2%
220	574	427	13	6	3	5	15	29	9	14	40	54	614	481	1.4%	1.1%	0.3%	0.4%
221	8	13	0	0	0	0	0	0	0	0	0	0	8	13	0.0%	0.1%	0.0%	0.0%
223	528	342	0	2	0	0	33	40	6	4	39	46	567	388	2.9%	1.9%	0.5%	0.6%
224	448	543	9	6	13	7	17	30	6	15	45	58	493	601	2.0%	2.4%	0.7%	0.9%
225	0	0	0	0	0	0	0	0	0	0	0	0	0	0	0.0%	0.0%	0.0%	0.0%
226	1,059	462	0	1	0	2	17	10	6	4	23	17	1,082	479	6.1%	2.7%	0.6%	0.5%
227	2	23	0	0	0	0	0	0	0	0	0	0	2	23	0.0%	0.1%	0.0%	0.0%
228	2	94	0	0	0	0	0	4	0	3	0	7	2	101	0.0%	0.3%	0.0%	0.1%
229	0	5	0	0	0	0	0	0	0	0	0	0	0	5	0.0%	0.0%	0.0%	0.0%
230	97	277	0	0	0	0	3	13	1	4	4	17	101	294	0.2%	0.6%	0.0%	0.2%
305	0	0	0	1	0	0	0	0	0	0	0	1	0	1	0.0%	0.0%	0.0%	0.0%
341	0	0	0	0	0	0	0	0	0	0	0	0	0	0	0.0%	0.0%	0.0%	0.0%
342	0	0	0	1	0	1	0	0	0	0	0	2	0	2	0.0%	0.0%	0.0%	0.0%
343	0	0	1	3	0	1	0	0	0	0	1	4	1	4	0.0%	0.0%	0.0%	0.1%
344	14	16	0	1	0	0	1	2	0	0	1	3	15	19	0.1%	0.2%	0.0%	0.1%
345	21	29	0	0	0	2	0	1	0	0	0	3	21	32	0.4%	0.5%	0.0%	0.1%
348	2	9	0	1	0	0	0	0	0	0	0	1	2	10	0.1%	0.2%	0.0%	0.1%
349	0	1	1	3	0	3	0	0	0	0	1	6	1	7	0.0%	0.0%	0.0%	0.1%
381	1	8	0	0	0	0	0	0	0	0	0	0	1	8	0.0%	0.1%	0.0%	0.0%
382	0	9	0	0	0	0	0	0	0	0	0	0	0	9	0.0%	0.1%	0.0%	0.0%
383	43	60	0	1	0	0	0	2	1	1	1	4	44	64	0.4%	0.5%	0.0%	0.1%
384	47	64	0	0	0	0	1	3	1	2	2	5	49	69	0.5%	0.7%	0.1%	0.2%
401	31	32	0	0	0	0	0	0	0	0	0	0	31	32	0.7%	0.8%	0.0%	0.0%
402	92	171	0	0	0	0	0	0	0	0	0	0	92	171	1.0%	1.8%	0.0%	0.0%
421	0	0	0	0	0	0	0	0	0	0	0	0	0	0	0.0%	0.0%	0.0%	0.0%
447	30	69	0	0	0	0	2	4	1	2	3	6	33	75	0.2%	0.4%	0.1%	0.2%
448	0	0	0	0	0	0	0	0	0	0	0	0	0	0	0.0%	0.0%	0.0%	0.0%
503	0	0	0	0	0	0	0	0	0	0	0	0	0	0	0.0%	0.0%	0.0%	0.0%
522	0	0	0	0	0	0	0	0	0	0	0	0	0	0	0.0%	0.0%	0.0%	0.0%
544	0	0	0	0	0	0	0	0	0	0	0	0	0	0	0.0%	0.0%	0.0%	0.0%
601	1	7	0	0	0	0	0	0	0	0	0	0	1	7	0.0%	0.1%	0.0%	0.0%
602	0	0	0	0	0	0	0	0	0	0	0	0	0	0	0.0%	0.0%	0.0%	0.0%
604	0	0	0	0	0	0	0	0	0	0	0	0	0	0	0.0%	0.0%	0.0%	0.0%
605	0	0	0	0	0	0	0	0	0	0	0	0	0	0	0.0%	0.0%	0.0%	0.0%
608	0	0	0	0	0	0	0	0	0	0	0	0	0	0	0.0%	0.0%	0.0%	0.0%
609	0	2	0	0	0	0	0	0	0	0	0	0	0	2	0.0%	0.1%	0.0%	0.0%
610	1	6	0	0	0	0	0	0	0	0	0	0	1	6	0.0%	0.1%	0.0%	0.0%
621	0	0	0	0	0	0	0	0	0	0	0	0	0	0	0.0%	0.0%	0.0%	0.0%
625	0	0	0	0	0	0	0	0	0	0	0	0	0	0	0.0%	0.0%	0.0%	0.0%
642	0	0	0	0	0	0	0	0	0	0	0	0	0	0	0.0%	0.0%	0.0%	0.0%
646	0	0	0	0	0	0	0	0	0	0	0	0	0	0	0.0%	0.0%	0.0%	0.0%
647	0	5	0	0	0	0	0	0	0	0	0	0	0	5	0.0%	0.0%	0.0%	0.0%
	3,630	3,969	57	104	18	47	99	172	40	74	214	397	3,844	4,366	0.3%	0.3%	0.0%	0.1%

第Ⅲ編 被害想定  
1. 建物被害の想定

表 1.4-1(5) 建物被害の想定結果【西山断層（破壊開始：中央下部）】

100	1,728	1,614	7	38	0	1	39	86	39	58	85	183	1,813	1,797	0.9%	0.8%	0.1%	0.2%
130	655	1,173	89	153	8	65	19	61	11	24	127	303	782	1,476	0.4%	0.7%	0.1%	0.4%
202	0	1	0	0	0	0	0	0	0	0	0	0	0	1	0.0%	0.0%	0.0%	0.0%
203	24	228	0	0	0	0	1	15	1	10	2	25	26	253	0.0%	0.2%	0.0%	0.1%
204	65	216	0	1	0	0	1	3	1	2	2	6	67	222	0.3%	0.9%	0.0%	0.1%

第Ⅲ編 被害想定  
1. 建物被害の想定

表 1.4-1(6) 建物被害の想定結果【西山断層（破壊開始：北西下部）】

	( )		( )										( )		(%)		(%)			
			SRC	RC																
100	267	679	1	9	0	0	3	18	3	16	7	43	274	722	0.1%	0.3%	0.0%	0.1%		
130	196	451	41	86	1	23	5	13	3	8	50	130	246	581	0.1%	0.3%	0.1%	0.2%		
202	0	39	0	0	0	0	0	0	0	0	0	0	0	39	0.0%	0.1%	0.0%	0.0%		
203	449	771	0	1	0	0	36	46	20	33	56	80	505	851	0.4%	0.8%	0.1%	0.2%		
204	31	148	0	0	0	0	0	2	0	1	0	3	31	151	0.1%	0.6%	0.0%	0.0%		
205	1,376	930	1	1	5	5	32	24	20	16	58	46	1,434	976	2.5%	1.7%	0.4%	0.3%		
206	692	597	2	7	0	2	23	20	21	16	46	45	738	642	3.5%	3.0%	0.6%	0.6%		
207	0	0	0	0	0	0	0	0	0	0	0	0	0	0	0.0%	0.0%	0.0%	0.0%		
210	3	57	0	0	0	0	0	0	1	0	0	1	3	58	0.0%	0.1%	0.0%	0.0%		
211	11	36	0	0	0	0	0	0	0	0	0	0	11	36	0.1%	0.2%	0.0%	0.0%		
212	0	0	0	0	0	0	0	0	0	0	0	0	0	0	0.0%	0.0%	0.0%	0.0%		
213	11	116	0	0	0	0	0	3	0	3	0	6	11	122	0.0%	0.4%	0.0%	0.1%		
214	23	56	0	0	0	0	0	1	0	1	0	2	23	58	0.1%	0.3%	0.0%	0.0%		
215	2	10	0	0	0	0	0	0	0	0	0	0	2	10	0.0%	0.1%	0.0%	0.0%		
216	104	100	0	0	0	0	5	6	5	5	10	11	114	111	0.5%	0.5%	0.1%	0.1%		
217	193	328	1	10	0	1	15	32	9	19	25	62	218	390	0.8%	1.4%	0.2%	0.4%		
218	9	26	2	5	0	1	1	1	1	1	4	8	13	34	0.0%	0.1%	0.0%	0.1%		
219	30	97	19	19	20	27	2	8	1	3	42	57	72	154	0.2%	0.6%	0.5%	0.7%		
220	93	138	0	1	0	0	1	3	1	2	2	6	95	144	0.2%	0.3%	0.0%	0.0%		
221	206	264	1	6	1	6	12	29	7	14	21	55	227	319	0.9%	1.2%	0.3%	0.7%		
223	323	284	0	1	0	0	15	22	4	4	19	27	342	311	1.8%	1.5%	0.2%	0.3%		
224	17	112	4	1	9	3	0	5	0	1	13	10	30	122	0.1%	0.5%	0.2%	0.2%		
225	1,100	1,495	1	4	0	1	59	87	29	40	89	132	1,189	1,627	5.7%	7.7%	1.3%	2.0%		
226	1,378	574	1	1	0	6	21	12	8	5	30	24	1,408	598	8.0%	3.3%	0.8%	0.6%		
227	366	386	0	1	0	1	3	5	9	10	12	17	378	403	1.5%	1.6%	0.3%	0.4%		
228	2,550	1,357	0	1	0	5	102	72	81	50	183	128	2,733	1,485	7.3%	3.9%	1.5%	1.0%		
229	313	461	0	1	0	0	6	11	5	8	11	20	324	481	2.1%	3.1%	0.3%	0.6%		
230	29	169	0	0	0	0	1	6	0	2	1	8	30	177	0.1%	0.4%	0.0%	0.1%		
305	0	0	1	6	0	1	0	0	0	0	1	7	1	7	0.0%	0.0%	0.0%	0.1%		
341	94	215	1	2	0	1	1	7	4	3	6	13	100	228	0.8%	1.7%	0.1%	0.3%		
342	4	23	1	4	0	5	0	0	0	0	1	9	5	32	0.0%	0.3%	0.0%	0.2%		
343	0	1	4	9	0	7	0	0	0	0	4	16	4	17	0.0%	0.0%	0.1%	0.3%		
344	64	68	1	3	0	4	7	7	1	1	9	15	73	83	0.6%	0.7%	0.3%	0.5%		
345	31	47	0	0	0	2	0	1	0	1	0	4	31	51	0.5%	0.8%	0.0%	0.1%		
348	6	21	0	1	0	1	0	0	0	0	0	2	6	23	0.2%	0.5%	0.0%	0.2%		
349	2	16	2	6	1	16	0	0	0	0	3	22	5	38	0.0%	0.2%	0.1%	0.4%		
381	0	0	0	0	0	0	0	0	0	0	0	0	0	0	0.0%	0.0%	0.0%	0.0%		
382	0	1	0	0	0	0	0	0	0	0	0	0	0	1	0.0%	0.0%	0.0%	0.0%		
383	18	27	0	0	0	0	0	0	0	0	0	0	18	27	0.1%	0.2%	0.0%	0.0%		
384	17	41	0	0	0	0	0	1	0	1	0	2	17	43	0.2%	0.4%	0.0%	0.1%		
401	73	65	0	0	0	0	0	0	0	0	0	0	73	65	1.8%	1.6%	0.0%	0.0%		
402	86	167	0	0	0	0	0	0	0	0	0	0	86	167	0.9%	1.8%	0.0%	0.0%		
421	112	113	0	0	0	0	3	4	4	5	7	9	119	122	1.7%	1.7%	0.5%	0.6%		
447	921	537	0	1	0	1	49	37	16	9	65	48	986	585	5.9%	3.4%	1.6%	1.2%		
448	26	38	0	0	0	0	1	3	0	1	1	4	27	42	1.0%	1.4%	0.2%	0.8%		
503	214	130	0	0	0	1	17	10	7	4	24	15	238	145	3.4%	2.1%	0.7%	0.4%		
522	0	0	0	0	0	0	0	0	0	0	0	0	0	0	0.0%	0.0%	0.0%	0.0%		
544	13	59	0	0	0	0	0	0	1	0	1	0	2	13	61	0.1%	0.6%	0.0%	0.1%	
601	238	307	1	2	0	0	7	13	5	10	13	25	251	332	3.4%	4.3%	0.7%	1.3%		
602	40	49	0	0	0	0	0	0	1	1	1	1	41	50	0.5%	0.7%	0.1%	0.1%		
604	226	142	0	0	0	0	6	4	16	11	22	15	248	157	5.2%	3.3%	1.6%	1.1%		
605	4	38	0	1	0	0	0	0	0	0	0	1	4	39	0.0%	0.4%	0.0%	0.0%		
608	8	36	0	0	0	0	0	0	0	0	0	0	8	36	0.3%	1.3%	0.0%	0.0%		
609	60	62	0	0	0	0	0	1	1	1	1	2	61	64	3.0%	3.1%	0.3%	0.5%		
610	97	122	0	0	0	0	2	3	2	3	4	6	101	128	1.0%	1.3%	0.2%	0.3%		
621	13	35	0	0	0	0	0	1	0	1	0	2	13	37	0.1%	0.3%	0.0%	0.0%		
625	8	61	0	0	0	0	0	2	0	3	0	5	8	66	0.1%	0.4%	0.0%	0.2%		
642	0	0	0	0	0	0	0	0	0	0	0	0	0	0	0.0%	0.0%	0.0%	0.0%		
646	0	0	0	0	0	0	0	0	0	0	0	0	0	0	0.0%	0.0%	0.0%	0.0%		
647	379	553	0	1	0	0	9	15	5	7	14	23	393	576	2.8%	4.1%	0.7%	1.1%		
	12,526	12,655	85	191	37	120	444	537	289	321	855	1,169	13,381	13,824	0.9%	0.9%	0.2%	0.2%		

第Ⅲ編 被害想定  
1. 建物被害の想定

表 1.4-1(7) 建物被害の想定結果【警固断層（南東部）（破壊開始：南東下部）】

	( )		( )										( )		(%)		(%)	
			SRC	RC														
100	0	7	0	0	0	0	0	0	0	0	0	0	0	7	0.0%	0.0%	0.0%	0.0%
130	3,450	2,301	227	386	39	165	123	109	74	54	463	714	3,913	3,015	2.0%	1.4%	0.5%	0.8%
202	0	0	0	0	0	0	0	0	0	0	0	0	0	0	0.0%	0.0%	0.0%	0.0%
203	3	34	0	0	0	0	0	1	0	1	0	2	3	36	0.0%	0.0%	0.0%	0.0%
204	0	0	0	0	0	0	0	0	0	0	0	0	0	0	0.0%	0.0%	0.0%	0.0%
205	6	45	0	0	0	0	0	1	0	1	0	2	6	47	0.0%	0.1%	0.0%	0.0%
206	0	0	0	0	0	0	0	0	0	0	0	0	0	0	0.0%	0.0%	0.0%	0.0%
207	0	0	0	0	0	0	0	0	0	0	0	0	0	0	0.0%	0.0%	0.0%	0.0%
210	0	0	0	0	0	0	0	0	0	0	0	0	0	0	0.0%	0.0%	0.0%	0.0%
211	0	2	0	0	0	0	0	0	0	0	0	0	0	2	0.0%	0.0%	0.0%	0.0%
212	0	0	0	0	0	0	0	0	0	0	0	0	0	0	0.0%	0.0%	0.0%	0.0%
213	0	0	0	0	0	0	0	0	0	0	0	0	0	0	0.0%	0.0%	0.0%	0.0%
214	0	0	0	0	0	0	0	0	0	0	0	0	0	0	0.0%	0.0%	0.0%	0.0%
215	0	0	0	0	0	0	0	0	0	0	0	0	0	0	0.0%	0.0%	0.0%	0.0%
216	6	27	0	0	0	0	0	1	0	2	0	3	6	30	0.0%	0.1%	0.0%	0.0%
217	26	160	1	6	0	0	1	14	2	10	4	30	30	190	0.1%	0.7%	0.0%	0.2%
218	60	83	9	17	1	9	3	6	4	5	17	37	77	120	0.3%	0.4%	0.2%	0.4%
219	118	165	25	23	30	23	7	14	3	4	65	64	183	229	0.7%	1.0%	0.8%	0.8%
220	44	47	0	0	0	0	0	0	0	0	0	0	44	47	0.1%	0.1%	0.0%	0.0%
221	135	122	2	6	1	4	5	10	4	6	12	26	147	148	0.6%	0.6%	0.1%	0.3%
223	31	136	0	0	0	0	0	6	0	1	0	7	31	143	0.2%	0.7%	0.0%	0.1%
224	19	32	2	1	5	1	0	1	0	0	7	3	26	35	0.1%	0.1%	0.1%	0.0%
225	0	0	0	0	0	0	0	0	0	0	0	0	0	0	0.0%	0.0%	0.0%	0.0%
226	170	190	0	0	0	0	1	2	1	1	2	3	172	193	1.0%	1.1%	0.1%	0.1%
227	0	10	0	0	0	0	0	0	0	0	0	0	0	10	0.0%	0.0%	0.0%	0.0%
228	57	361	0	0	0	0	2	16	2	13	4	29	61	390	0.2%	1.0%	0.0%	0.2%
229	3	77	0	0	0	0	0	1	0	1	0	2	3	79	0.0%	0.5%	0.0%	0.1%
230	2,211	1,124	1	6	2	21	89	63	28	22	120	112	2,331	1,236	5.0%	2.5%	1.3%	1.2%
305	10	35	10	27	1	10	0	1	0	0	11	38	21	73	0.1%	0.3%	0.2%	0.6%
341	36	164	0	1	0	0	1	3	0	2	1	6	37	170	0.3%	1.3%	0.0%	0.1%
342	0	3	0	2	0	4	0	0	0	0	0	6	0	9	0.0%	0.0%	0.0%	0.1%
343	7	19	11	20	6	36	0	1	0	0	17	57	24	76	0.1%	0.2%	0.3%	1.2%
344	46	40	1	3	0	3	5	4	1	1	7	11	53	51	0.5%	0.4%	0.2%	0.4%
345	20	27	0	0	0	1	0	0	0	0	0	1	20	28	0.3%	0.5%	0.0%	0.0%
348	0	2	0	1	0	0	0	0	0	0	0	1	0	3	0.0%	0.1%	0.0%	0.1%
349	5	30	6	12	3	49	0	1	0	1	9	63	14	93	0.1%	0.3%	0.2%	1.1%
381	0	0	0	0	0	0	0	0	0	0	0	0	0	0	0.0%	0.0%	0.0%	0.0%
382	0	0	0	0	0	0	0	0	0	0	0	0	0	0	0.0%	0.0%	0.0%	0.0%
383	5	12	0	0	0	0	0	0	0	0	0	0	5	12	0.0%	0.1%	0.0%	0.0%
384	2	11	0	0	0	0	0	0	0	0	0	0	2	11	0.0%	0.1%	0.0%	0.0%
401	0	3	0	0	0	0	0	0	0	0	0	0	0	3	0.0%	0.1%	0.0%	0.0%
402	1	7	0	0	0	0	0	0	0	0	0	0	1	7	0.0%	0.1%	0.0%	0.0%
421	0	0	0	0	0	0	0	0	0	0	0	0	0	0	0.0%	0.0%	0.0%	0.0%
447	105	151	0	0	0	0	6	10	3	4	9	14	114	165	0.7%	1.0%	0.2%	0.4%
448	0	0	0	0	0	0	0	0	0	0	0	0	0	0	0.0%	0.0%	0.0%	0.0%
503	0	7	0	0	0	0	0	0	0	0	0	0	0	7	0.0%	0.1%	0.0%	0.0%
522	0	0	0	0	0	0	0	0	0	0	0	0	0	0	0.0%	0.0%	0.0%	0.0%
544	0	1	0	0	0	0	0	0	0	0	0	0	0	1	0.0%	0.0%	0.0%	0.0%
601	0	0	0	0	0	0	0	0	0	0	0	0	0	0	0.0%	0.0%	0.0%	0.0%
602	0	0	0	0	0	0	0	0	0	0	0	0	0	0	0.0%	0.0%	0.0%	0.0%
604	0	0	0	0	0	0	0	0	0	0	0	0	0	0	0.0%	0.0%	0.0%	0.0%
605	0	0	0	0	0	0	0	0	0	0	0	0	0	0	0.0%	0.0%	0.0%	0.0%
608	0	0	0	0	0	0	0	0	0	0	0	0	0	0	0.0%	0.0%	0.0%	0.0%
609	0	0	0	0	0	0	0	0	0	0	0	0	0	0	0.0%	0.0%	0.0%	0.0%
610	0	0	0	0	0	0	0	0	0	0	0	0	0	0	0.0%	0.0%	0.0%	0.0%
621	0	0	0	0	0	0	0	0	0	0	0	0	0	0	0.0%	0.0%	0.0%	0.0%
625	0	0	0	0	0	0	0	0	0	0	0	0	0	0	0.0%	0.0%	0.0%	0.0%
642	0	0	0	0	0	0	0	0	0	0	0	0	0	0	0.0%	0.0%	0.0%	0.0%
646	0	0	0	0	0	0	0	0	0	0	0	0	0	0	0.0%	0.0%	0.0%	0.0%
647	0	0	0	0	0	0	0	0	0	0	0	0	0	0	0.0%	0.0%	0.0%	0.0%
	6,576	5,435	295	511	88	326	243	265	122	129	748	1,231	7,324	6,666	0.5%	0.4%	0.1%	0.2%

第Ⅲ編 被害想定  
1. 建物被害の想定

表 1.4-1(8) 建物被害の想定結果【警固断層（南東部）（破壊開始：中央下部）】

	( )		( )										( )		(%)		(%)	
			SRC	RC														
100	13	86	0	1	0	0	0	1	0	1	0	3	13	89	0.0%	0.0%	0.0%	0.0%
130	3,926	2,559	296	478	63	227	146	144	92	66	597	915	4,523	3,474	2.3%	1.5%	0.7%	1.1%
202	1	56	0	0	0	0	0	0	0	1	0	1	1	57	0.0%	0.1%	0.0%	0.0%
203	440	938	0	1	0	0	19	48	18	40	37	89	477	1,027	0.4%	0.9%	0.1%	0.2%
204	1	2	0	0	0	0	0	0	0	0	0	1	2	0.0%	0.0%	0.0%	0.0%	
205	246	209	0	0	0	0	7	11	5	6	12	17	258	226	0.4%	0.4%	0.1%	0.1%
206	10	70	0	0	0	0	0	2	0	2	0	4	10	74	0.1%	0.4%	0.0%	0.1%
207	0	0	0	0	0	0	0	0	0	0	0	0	0	0	0.0%	0.0%	0.0%	0.0%
210	2	36	0	0	0	0	0	0	0	0	0	0	2	36	0.0%	0.1%	0.0%	0.0%
211	17	48	0	0	0	0	0	1	0	1	0	2	17	50	0.1%	0.2%	0.0%	0.0%
212	0	0	0	0	0	0	0	0	0	0	0	0	0	0	0.0%	0.0%	0.0%	0.0%
213	0	0	0	0	0	0	0	0	0	0	0	0	0	0	0.0%	0.0%	0.0%	0.0%
214	0	0	0	0	0	0	0	0	0	0	0	0	0	0	0.0%	0.0%	0.0%	0.0%
215	0	1	0	0	0	0	0	0	0	0	0	0	0	1	0.0%	0.0%	0.0%	0.0%
216	152	123	0	0	0	0	7	7	7	6	14	13	166	136	0.7%	0.6%	0.2%	0.2%
217	874	559	14	53	1	29	73	58	46	32	134	172	1,008	731	3.8%	2.4%	0.8%	1.1%
218	162	156	22	31	6	22	12	14	9	9	49	76	211	232	0.7%	0.7%	0.6%	0.9%
219	439	338	47	31	46	18	34	34	11	11	138	94	577	432	2.7%	2.1%	1.7%	1.2%
220	38	51	0	0	0	0	0	0	0	0	0	0	38	51	0.1%	0.1%	0.0%	0.0%
221	688	673	10	24	5	34	64	76	34	39	113	173	801	846	3.2%	3.1%	1.4%	2.1%
222	109	287	0	1	0	0	3	14	1	3	4	18	113	305	0.6%	1.6%	0.1%	0.2%
224	16	28	1	0	3	1	0	1	0	0	4	2	20	30	0.1%	0.1%	0.1%	0.0%
225	27	517	0	1	0	0	2	28	1	14	3	43	30	560	0.1%	2.7%	0.0%	0.7%
226	442	270	0	0	0	0	5	6	2	1	7	7	449	277	2.6%	1.6%	0.2%	0.2%
227	111	89	0	0	0	0	1	1	3	2	4	3	115	92	0.5%	0.4%	0.1%	0.1%
228	1,679	1,140	0	1	0	2	71	58	58	40	129	101	1,808	1,241	4.8%	3.2%	1.0%	0.8%
229	352	504	0	1	0	0	7	13	6	9	13	23	365	527	2.4%	3.4%	0.4%	0.7%
230	1,893	974	1	4	0	12	76	58	23	18	100	92	1,993	1,066	4.3%	2.2%	1.1%	1.0%
305	166	206	27	56	5	29	5	10	2	3	39	98	205	304	1.3%	1.6%	0.6%	1.6%
341	379	320	2	5	0	5	10	22	9	5	21	37	400	357	3.0%	2.6%	0.5%	0.8%
342	15	51	2	7	1	10	0	1	0	0	3	18	18	69	0.2%	0.6%	0.1%	0.4%
343	23	60	22	32	16	68	2	5	0	2	40	107	63	167	0.2%	0.6%	0.8%	2.2%
344	129	135	3	7	1	15	13	14	3	3	20	39	149	174	1.3%	1.4%	0.7%	1.4%
345	23	35	0	1	0	4	0	1	0	0	0	6	23	41	0.4%	0.6%	0.0%	0.1%
348	5	22	0	1	0	2	0	0	0	0	0	3	5	25	0.1%	0.6%	0.0%	0.3%
349	53	112	10	18	12	102	2	4	1	4	25	128	78	240	0.6%	1.2%	0.5%	2.3%
381	0	0	0	0	0	0	0	0	0	0	0	0	0	0	0.0%	0.0%	0.0%	0.0%
382	0	0	0	0	0	0	0	0	0	0	0	0	0	0	0.0%	0.0%	0.0%	0.0%
383	3	12	0	0	0	0	0	0	0	0	0	0	3	12	0.0%	0.1%	0.0%	0.0%
384	5	16	0	0	0	0	0	0	0	0	0	0	5	16	0.1%	0.2%	0.0%	0.0%
401	12	27	0	0	0	0	0	0	0	0	0	0	12	27	0.3%	0.7%	0.0%	0.0%
402	7	37	0	0	0	0	0	0	0	0	0	0	7	37	0.1%	0.4%	0.0%	0.0%
421	0	0	0	0	0	0	0	0	0	0	0	0	0	0	0.0%	0.0%	0.0%	0.0%
447	925	526	0	1	0	1	51	36	16	9	67	47	992	573	5.9%	3.4%	1.7%	1.2%
448	0	0	0	0	0	0	0	0	0	0	0	0	0	0	0.0%	0.0%	0.0%	0.0%
503	181	144	0	0	0	0	14	11	6	5	20	16	201	160	2.9%	2.3%	0.6%	0.4%
522	0	0	0	0	0	0	0	0	0	0	0	0	0	0	0.0%	0.0%	0.0%	0.0%
544	16	63	0	0	0	0	0	1	0	1	0	2	16	65	0.2%	0.7%	0.0%	0.1%
601	3	12	0	0	0	0	0	0	0	0	0	0	3	12	0.0%	0.2%	0.0%	0.0%
602	0	0	0	0	0	0	0	0	0	0	0	0	0	0	0.0%	0.0%	0.0%	0.0%
604	0	1	0	0	0	0	0	0	0	0	0	0	0	1	0.0%	0.0%	0.0%	0.0%
605	0	0	0	0	0	0	0	0	0	0	0	0	0	0	0.0%	0.0%	0.0%	0.0%
608	0	0	0	0	0	0	0	0	0	0	0	0	0	0	0.0%	0.0%	0.0%	0.0%
609	2	5	0	0	0	0	0	0	0	0	0	0	2	5	0.1%	0.3%	0.0%	0.0%
610	0	5	0	0	0	0	0	0	0	0	0	0	0	5	0.0%	0.1%	0.0%	0.0%
621	0	0	0	0	0	0	0	0	0	0	0	0	0	0	0.0%	0.0%	0.0%	0.0%
625	0	0	0	0	0	0	0	0	0	0	0	0	0	0	0.0%	0.0%	0.0%	0.0%
642	0	0	0	0	0	0	0	0	0	0	0	0	0	0	0.0%	0.0%	0.0%	0.0%
646	0	0	0	0	0	0	0	0	0	0	0	0	0	0	0.0%	0.0%	0.0%	0.0%
647	1	25	0	0	0	0	0	1	0	0	0	1	1	26	0.0%	0.2%	0.0%	0.0%
	13,586	11,528	457	755	159	581	624	681	353	333	1,593	2,350	15,179	13,878	1.0%	0.8%	0.3%	0.4%



第Ⅲ編 被害想定  
1. 建物被害の想定

表 1.4-1(9) 建物被害の想定結果【警固断層（南東部）（破壊開始：北西下部）】

	( )		( )										( )		(%)		(%)	
			SRC		RC													
100	1	15	0	0	0	0	0	0	0	0	0	0	1	15	0.0%	0.0%	0.0%	0.0%
130	1,932	1,658	131	259	16	86	56	76	42	40	245	461	2,177	2,119	1.1%	1.0%	0.3%	0.5%
202	42	377	0	0	0	0	0	4	0	5	0	9	42	386	0.1%	0.8%	0.0%	0.1%
203	1,594	1,577	1	4	0	2	79	72	63	62	143	140	1,737	1,717	1.6%	1.5%	0.3%	0.3%
204	0	2	0	0	0	0	0	0	0	0	0	0	0	2	0.0%	0.0%	0.0%	0.0%
205	304	235	0	0	0	0	10	12	7	6	17	18	321	253	0.6%	0.4%	0.1%	0.1%
206	37	133	0	1	0	0	1	5	1	5	2	11	39	144	0.2%	0.7%	0.0%	0.2%
207	0	7	0	0	0	0	0	0	0	0	0	0	0	7	0.0%	0.0%	0.0%	0.0%
210	111	351	0	0	0	0	1	6	1	3	2	9	113	360	0.2%	0.7%	0.0%	0.1%
211	96	209	0	0	0	0	1	3	1	2	2	5	98	214	0.5%	1.0%	0.0%	0.1%
212	0	0	0	0	0	0	0	0	0	0	0	0	0	0	0.0%	0.0%	0.0%	0.0%
213	0	0	0	0	0	0	0	0	0	0	0	0	0	0	0.0%	0.0%	0.0%	0.0%
214	0	0	0	0	0	0	0	0	0	0	0	0	0	0	0.0%	0.0%	0.0%	0.0%
215	0	0	0	0	0	0	0	0	0	0	0	0	0	0	0.0%	0.0%	0.0%	0.0%
216	316	179	0	8	0	0	13	12	13	8	26	28	342	207	1.5%	0.9%	0.3%	0.4%
217	1,287	864	34	96	4	77	109	105	69	58	216	336	1,503	1,200	5.6%	3.8%	1.4%	2.1%
218	156	145	20	30	6	21	11	13	9	9	46	73	202	218	0.7%	0.6%	0.6%	0.9%
219	429	338	46	31	45	17	33	35	11	11	135	94	564	432	2.7%	2.1%	1.7%	1.2%
220	1	12	0	0	0	0	0	0	0	0	0	0	1	12	0.0%	0.0%	0.0%	0.0%
221	1,020	933	16	32	8	59	102	109	53	56	179	256	1,199	1,189	4.7%	4.3%	2.1%	3.1%
223	0	3	0	0	0	0	0	0	0	0	0	0	0	3	0.0%	0.0%	0.0%	0.0%
224	0	1	0	0	0	0	0	0	0	0	0	0	0	1	0.0%	0.0%	0.0%	0.0%
225	1,389	1,388	2	5	0	1	77	84	37	37	116	127	1,506	1,515	7.2%	7.2%	1.8%	1.9%
226	186	189	0	0	0	0	1	2	1	1	2	3	188	192	1.1%	1.1%	0.1%	0.1%
227	204	61	0	0	0	0	1	1	5	2	6	3	210	64	0.9%	0.3%	0.1%	0.1%
228	3,477	1,478	1	1	0	18	147	92	117	64	265	175	3,742	1,663	9.9%	4.2%	2.1%	1.4%
229	940	598	1	2	0	1	20	19	15	11	36	33	976	631	6.4%	4.0%	1.1%	1.0%
230	297	463	0	1	0	0	10	26	4	8	14	35	311	498	0.7%	1.0%	0.1%	0.4%
305	132	175	22	48	4	24	4	8	1	3	31	83	163	258	1.0%	1.3%	0.5%	1.3%
341	326	292	2	4	0	4	8	18	9	5	19	31	345	323	2.6%	2.3%	0.4%	0.7%
342	2	11	1	3	0	4	0	0	0	0	1	7	3	18	0.0%	0.1%	0.0%	0.2%
343	7	22	13	23	6	39	1	2	0	0	20	64	27	86	0.1%	0.2%	0.4%	1.3%
344	90	96	2	5	0	7	9	10	2	2	13	24	103	120	0.9%	1.0%	0.5%	0.8%
345	2	17	0	0	0	0	0	0	0	0	0	0	2	17	0.0%	0.3%	0.0%	0.0%
348	0	0	0	0	0	0	0	0	0	0	0	0	0	0	0.0%	0.0%	0.0%	0.0%
349	3	22	5	11	2	41	0	1	0	1	7	54	10	76	0.0%	0.2%	0.1%	1.0%
381	0	0	0	0	0	0	0	0	0	0	0	0	0	0	0.0%	0.0%	0.0%	0.0%
382	0	0	0	0	0	0	0	0	0	0	0	0	0	0	0.0%	0.0%	0.0%	0.0%
383	2	3	0	0	0	0	0	0	0	0	0	0	2	3	0.0%	0.0%	0.0%	0.0%
384	0	4	0	0	0	0	0	0	0	0	0	0	0	4	0.0%	0.0%	0.0%	0.0%
401	5	21	0	0	0	0	0	0	0	0	0	0	5	21	0.1%	0.5%	0.0%	0.0%
402	0	2	0	0	0	0	0	0	0	0	0	0	0	2	0.0%	0.0%	0.0%	0.0%
421	0	2	0	0	0	0	0	0	0	0	0	0	0	2	0.0%	0.0%	0.0%	0.0%
447	1,387	479	0	1	0	3	74	36	22	10	96	50	1,483	529	8.9%	3.1%	2.4%	1.3%
448	3	15	0	0	0	0	0	1	0	0	0	1	3	16	0.1%	0.6%	0.0%	0.2%
503	386	230	0	0	0	1	24	14	11	6	35	21	421	251	6.1%	3.7%	1.0%	0.6%
522	0	18	0	0	0	0	0	0	0	0	0	0	0	18	0.0%	0.3%	0.0%	0.0%
544	108	120	0	0	0	0	1	2	1	1	2	3	110	123	1.2%	1.3%	0.1%	0.1%
601	6	15	0	0	0	0	0	0	0	0	0	0	6	15	0.1%	0.2%	0.0%	0.0%
602	1	11	0	0	0	0	0	0	0	0	0	0	1	11	0.0%	0.2%	0.0%	0.0%
604	0	3	0	0	0	0	0	0	0	0	0	0	0	3	0.0%	0.1%	0.0%	0.0%
605	0	0	0	0	0	0	0	0	0	0	0	0	0	0	0.0%	0.0%	0.0%	0.0%
608	0	0	0	0	0	0	0	0	0	0	0	0	0	0	0.0%	0.0%	0.0%	0.0%
609	5	11	0	0	0	0	0	0	0	0	0	0	5	11	0.3%	0.6%	0.0%	0.0%
610	0	6	0	0	0	0	0	0	0	0	0	0	0	6	0.0%	0.1%	0.0%	0.0%
621	0	0	0	0	0	0	0	0	0	0	0	0	0	0	0.0%	0.0%	0.0%	0.0%
625	0	0	0	0	0	0	0	0	0	0	0	0	0	0	0.0%	0.0%	0.0%	0.0%
642	0	0	0	0	0	0	0	0	0	0	0	0	0	0	0.0%	0.0%	0.0%	0.0%
646	0	0	0	0	0	0	0	0	0	0	0	0	0	0	0.0%	0.0%	0.0%	0.0%
647	7	73	0	0	0	0	0	2	0	1	0	3	7	76	0.1%	0.5%	0.0%	0.1%
	16,291	12,864	297	565	91	405	793	770	495	417	1,676	2,157	17,967	15,021	1.2%	0.9%	0.3%	0.4%

第Ⅲ編 被害想定  
1. 建物被害の想定

表 1.4-1(10) 建物被害の想定結果【水網断層（破壊開始：北東下部）】

	( )		( )										( )		(%)		(%)		
			SRC	RC															
100	0	0	0	0	0	0	0	0	0	0	0	0	0	0	0	0.0%	0.0%	0.0%	0.0%
130	122	440	9	30	0	1	4	15	2	7	15	53	137	493	0.1%	0.3%	0.0%	0.1%	
202	1,493	1,352	0	5	0	0	18	32	18	18	36	55	1,529	1,407	3.0%	2.7%	0.3%	0.4%	
203	4,968	2,245	15	38	17	127	258	185	196	94	486	444	5,454	2,689	4.9%	2.2%	1.0%	0.9%	
204	0	0	0	0	0	0	0	0	0	0	0	0	0	0	0.0%	0.0%	0.0%	0.0%	
205	3	40	0	0	0	0	0	1	0	1	0	2	3	42	0.0%	0.1%	0.0%	0.0%	
206	0	0	0	0	0	0	0	0	0	0	0	0	0	0	0.0%	0.0%	0.0%	0.0%	
207	99	372	0	0	0	0	1	3	1	2	2	5	101	377	0.3%	1.1%	0.0%	0.1%	
210	1,556	1,065	0	0	0	2	35	30	17	13	52	45	1,608	1,110	3.2%	2.2%	0.5%	0.4%	
211	701	337	0	3	0	0	10	10	8	5	18	18	719	355	3.3%	1.6%	0.2%	0.2%	
212	10	137	0	0	0	0	0	0	0	1	0	1	10	138	0.1%	0.7%	0.0%	0.0%	
213	0	0	0	0	0	0	0	0	0	0	0	0	0	0	0.0%	0.0%	0.0%	0.0%	
214	0	0	0	0	0	0	0	0	0	0	0	0	0	0	0.0%	0.0%	0.0%	0.0%	
215	0	0	0	0	0	0	0	0	0	0	0	0	0	0	0.0%	0.0%	0.0%	0.0%	
216	372	196	1	15	0	0	17	15	14	8	32	38	404	234	1.8%	1.0%	0.4%	0.5%	
217	87	222	1	6	0	0	7	21	4	13	12	40	99	262	0.4%	1.0%	0.1%	0.3%	
218	1	9	1	4	0	0	0	1	0	1	1	6	2	15	0.0%	0.0%	0.0%	0.1%	
219	2	13	8	12	5	22	0	1	0	0	13	35	15	48	0.0%	0.1%	0.2%	0.4%	
220	0	0	0	0	0	0	0	0	0	0	0	0	0	0	0.0%	0.0%	0.0%	0.0%	
221	90	128	1	3	0	1	3	12	2	6	6	22	96	150	0.4%	0.6%	0.1%	0.3%	
223	0	0	0	0	0	0	0	0	0	0	0	0	0	0	0.0%	0.0%	0.0%	0.0%	
224	0	0	0	0	0	0	0	0	0	0	0	0	0	0	0.0%	0.0%	0.0%	0.0%	
225	2,950	789	3	6	0	16	156	61	72	25	231	108	3,181	897	15.2%	4.1%	3.5%	1.6%	
226	9	66	0	0	0	0	0	0	0	0	0	0	9	66	0.1%	0.4%	0.0%	0.0%	
227	27	77	0	0	0	0	0	1	1	2	1	3	28	80	0.1%	0.3%	0.0%	0.1%	
228	4,614	1,789	1	1	0	27	195	112	161	71	357	211	4,971	2,000	13.1%	5.1%	2.9%	1.7%	
229	1,937	533	2	4	1	22	46	19	31	11	80	56	2,017	589	13.1%	3.6%	2.5%	1.8%	
230	61	235	0	0	0	0	1	10	1	3	2	13	63	248	0.1%	0.5%	0.0%	0.1%	
305	0	1	1	6	0	0	0	0	0	0	1	6	1	7	0.0%	0.0%	0.0%	0.1%	
341	0	2	0	0	0	0	0	0	0	0	0	0	0	2	0.0%	0.0%	0.0%	0.0%	
342	0	0	0	0	0	0	0	0	0	0	0	0	0	0	0.0%	0.0%	0.0%	0.0%	
343	0	0	0	2	0	0	0	0	0	0	0	0	2	0	0.0%	0.0%	0.0%	0.0%	
344	6	10	0	0	0	0	1	1	0	0	1	1	7	11	0.1%	0.1%	0.0%	0.0%	
345	0	0	0	0	0	0	0	0	0	0	0	0	0	0	0.0%	0.0%	0.0%	0.0%	
348	0	0	0	0	0	0	0	0	0	0	0	0	0	0	0.0%	0.0%	0.0%	0.0%	
349	0	0	0	1	0	0	0	0	0	0	0	1	0	1	0.0%	0.0%	0.0%	0.0%	
381	0	0	0	0	0	0	0	0	0	0	0	0	0	0	0.0%	0.0%	0.0%	0.0%	
382	0	0	0	0	0	0	0	0	0	0	0	0	0	0	0.0%	0.0%	0.0%	0.0%	
383	0	1	0	0	0	0	0	0	0	0	0	0	0	1	0.0%	0.0%	0.0%	0.0%	
384	0	0	0	0	0	0	0	0	0	0	0	0	0	0	0.0%	0.0%	0.0%	0.0%	
401	0	0	0	0	0	0	0	0	0	0	0	0	0	0	0.0%	0.0%	0.0%	0.0%	
402	0	0	0	0	0	0	0	0	0	0	0	0	0	0	0.0%	0.0%	0.0%	0.0%	
421	0	0	0	0	0	0	0	0	0	0	0	0	0	0	0.0%	0.0%	0.0%	0.0%	
447	1,082	524	0	1	0	2	61	39	19	10	80	52	1,162	576	6.9%	3.4%	2.0%	1.3%	
448	0	0	0	0	0	0	0	0	0	0	0	0	0	0	0.0%	0.0%	0.0%	0.0%	
503	694	246	0	0	0	7	45	23	19	9	64	39	758	285	11.1%	3.9%	1.8%	1.1%	
522	49	118	0	0	0	0	0	0	0	0	0	0	49	118	0.7%	1.6%	0.0%	0.0%	
544	648	245	1	3	2	26	16	11	7	3	26	43	674	288	7.1%	2.7%	0.7%	1.2%	
601	0	0	0	0	0	0	0	0	0	0	0	0	0	0	0.0%	0.0%	0.0%	0.0%	
602	0	0	0	0	0	0	0	0	0	0	0	0	0	0	0.0%	0.0%	0.0%	0.0%	
604	0	0	0	0	0	0	0	0	0	0	0	0	0	0	0.0%	0.0%	0.0%	0.0%	
605	0	0	0	0	0	0	0	0	0	0	0	0	0	0	0.0%	0.0%	0.0%	0.0%	
608	0	0	0	0	0	0	0	0	0	0	0	0	0	0	0.0%	0.0%	0.0%	0.0%	
609	0	1	0	0	0	0	0	0	0	0	0	0	0	1	0.0%	0.1%	0.0%	0.0%	
610	0	0	0	0	0	0	0	0	0	0	0	0	0	0	0.0%	0.0%	0.0%	0.0%	
621	0	0	0	0	0	0	0	0	0	0	0	0	0	0	0.0%	0.0%	0.0%	0.0%	
625	0	0	0	0	0	0	0	0	0	0	0	0	0	0	0.0%	0.0%	0.0%	0.0%	
642	0	0	0	0	0	0	0	0	0	0	0	0	0	0	0.0%	0.0%	0.0%	0.0%	
646	0	0	0	0	0	0	0	0	0	0	0	0	0	0	0.0%	0.0%	0.0%	0.0%	
647	0	0	0	0	0	0	0	0	0	0	0	0	0	0	0.0%	0.0%	0.0%	0.0%	
	21,581	11,193	44	140	25	253	874	603	573	303	1,516	1,299	23,097	12,492	1.5%	0.8%	0.3%	0.2%	

第Ⅲ編 被害想定  
1. 建物被害の想定

表 1.4-1(11) 建物被害の想定結果【水縄断層（破壊開始：中央下部）】

	( )		( )										( )		(%)		(%)		
			SRC	RC															
100	0	2	0	0	0	0	0	0	0	0	0	0	0	0	2	0.0%	0.0%	0.0%	0.0%
130	22	113	5	19	0	1	1	4	0	2	6	26	28	139	0.0%	0.1%	0.0%	0.0%	
202	780	1,170	0	3	0	0	10	26	10	18	20	47	800	1,217	1.6%	2.4%	0.1%	0.3%	
203	4,400	2,063	11	27	12	98	221	158	174	84	418	367	4,818	2,430	4.3%	2.0%	0.8%	0.7%	
204	0	0	0	0	0	0	0	0	0	0	0	0	0	0	0.0%	0.0%	0.0%	0.0%	
205	147	157	0	0	0	0	3	8	3	5	6	13	153	170	0.3%	0.3%	0.0%	0.1%	
206	6	55	0	0	0	0	0	2	0	2	0	4	6	59	0.0%	0.3%	0.0%	0.1%	
207	12	108	0	0	0	0	0	1	0	1	0	2	12	110	0.0%	0.3%	0.0%	0.0%	
210	2,596	1,068	0	1	0	4	51	33	27	13	78	51	2,674	1,119	5.4%	2.2%	0.8%	0.5%	
211	482	316	0	1	0	0	6	9	6	4	12	14	494	330	2.3%	1.5%	0.2%	0.2%	
212	0	2	0	0	0	0	0	0	0	0	0	0	0	2	0.0%	0.0%	0.0%	0.0%	
213	0	0	0	0	0	0	0	0	0	0	0	0	0	0	0.0%	0.0%	0.0%	0.0%	
214	0	0	0	0	0	0	0	0	0	0	0	0	0	0	0.0%	0.0%	0.0%	0.0%	
215	0	0	0	0	0	0	0	0	0	0	0	0	0	0	0.0%	0.0%	0.0%	0.0%	
216	401	202	1	19	0	1	19	16	15	8	35	44	436	246	2.0%	1.0%	0.4%	0.6%	
217	105	214	0	6	0	0	8	21	4	12	12	39	117	253	0.5%	0.9%	0.1%	0.2%	
218	0	4	1	2	0	0	0	0	0	0	1	2	1	6	0.0%	0.0%	0.0%	0.0%	
219	1	5	6	10	3	20	0	0	0	0	9	30	10	35	0.0%	0.0%	0.1%	0.4%	
220	0	1	0	0	0	0	0	0	0	0	0	0	0	1	0.0%	0.0%	0.0%	0.0%	
221	85	132	1	2	0	1	3	13	2	6	6	22	91	154	0.4%	0.6%	0.1%	0.3%	
223	0	0	0	0	0	0	0	0	0	0	0	0	0	0	0.0%	0.0%	0.0%	0.0%	
224	0	0	0	0	0	0	0	0	0	0	0	0	0	0	0.0%	0.0%	0.0%	0.0%	
225	3,783	1,008	6	8	28	108	197	82	91	32	322	230	4,105	1,238	19.5%	5.2%	4.9%	3.5%	
226	60	136	0	0	0	0	0	0	0	1	0	1	60	137	0.3%	0.8%	0.0%	0.0%	
227	180	65	0	0	0	0	1	1	4	2	5	3	185	68	0.8%	0.3%	0.1%	0.1%	
228	6,324	1,735	1	2	1	48	243	120	185	67	430	237	6,754	1,972	18.0%	4.9%	3.4%	1.9%	
229	1,761	541	2	3	0	12	42	18	28	10	72	43	1,833	584	11.9%	3.7%	2.3%	1.4%	
230	1	44	0	0	0	0	0	1	0	0	0	1	1	45	0.0%	0.1%	0.0%	0.0%	
305	0	0	1	3	0	0	0	0	0	0	1	3	1	3	0.0%	0.0%	0.0%	0.0%	
341	0	3	0	0	0	0	0	0	0	0	0	0	0	3	0.0%	0.0%	0.0%	0.0%	
342	0	0	0	0	0	0	0	0	0	0	0	0	0	0	0.0%	0.0%	0.0%	0.0%	
343	0	0	0	2	0	0	0	0	0	0	0	2	0	2	0.0%	0.0%	0.0%	0.0%	
344	6	11	0	0	0	0	1	1	0	0	1	1	7	12	0.1%	0.1%	0.0%	0.0%	
345	0	0	0	0	0	0	0	0	0	0	0	0	0	0	0.0%	0.0%	0.0%	0.0%	
348	0	0	0	0	0	0	0	0	0	0	0	0	0	0	0.0%	0.0%	0.0%	0.0%	
349	0	0	0	1	0	0	0	0	0	0	0	1	0	1	0.0%	0.0%	0.0%	0.0%	
381	0	0	0	0	0	0	0	0	0	0	0	0	0	0	0.0%	0.0%	0.0%	0.0%	
382	0	0	0	0	0	0	0	0	0	0	0	0	0	0	0.0%	0.0%	0.0%	0.0%	
383	0	2	0	0	0	0	0	0	0	0	0	0	0	2	0.0%	0.0%	0.0%	0.0%	
384	0	1	0	0	0	0	0	0	0	0	0	0	0	1	0.0%	0.0%	0.0%	0.0%	
401	0	5	0	0	0	0	0	0	0	0	0	0	0	5	0.0%	0.1%	0.0%	0.0%	
402	0	0	0	0	0	0	0	0	0	0	0	0	0	0	0.0%	0.0%	0.0%	0.0%	
421	0	0	0	0	0	0	0	0	0	0	0	0	0	0	0.0%	0.0%	0.0%	0.0%	
447	1,460	430	0	1	1	7	83	37	25	9	109	54	1,569	484	9.3%	2.8%	2.7%	1.4%	
448	40	57	0	0	0	0	2	4	0	1	2	5	42	62	1.5%	2.1%	0.4%	1.0%	
503	679	222	0	0	0	3	38	20	17	8	55	31	734	253	10.8%	3.5%	1.5%	0.9%	
522	11	64	0	0	0	0	0	0	0	0	0	0	11	64	0.2%	0.9%	0.0%	0.0%	
544	599	231	1	2	0	14	14	10	6	3	21	29	620	260	6.5%	2.5%	0.6%	0.8%	
601	1	7	0	0	0	0	0	0	0	0	0	0	1	7	0.0%	0.1%	0.0%	0.0%	
602	1	12	0	0	0	0	0	0	0	0	0	0	1	12	0.0%	0.2%	0.0%	0.0%	
604	0	0	0	0	0	0	0	0	0	0	0	0	0	0	0.0%	0.0%	0.0%	0.0%	
605	0	0	0	0	0	0	0	0	0	0	0	0	0	0	0.0%	0.0%	0.0%	0.0%	
608	0	0	0	0	0	0	0	0	0	0	0	0	0	0	0.0%	0.0%	0.0%	0.0%	
609	4	10	0	0	0	0	0	0	0	0	0	0	4	10	0.2%	0.5%	0.0%	0.0%	
610	0	1	0	0	0	0	0	0	0	0	0	0	0	1	0.0%	0.0%	0.0%	0.0%	
621	0	0	0	0	0	0	0	0	0	0	0	0	0	0	0.0%	0.0%	0.0%	0.0%	
625	0	0	0	0	0	0	0	0	0	0	0	0	0	0	0.0%	0.0%	0.0%	0.0%	
642	0	0	0	0	0	0	0	0	0	0	0	0	0	0	0.0%	0.0%	0.0%	0.0%	
646	0	0	0	0	0	0	0	0	0	0	0	0	0	0	0.0%	0.0%	0.0%	0.0%	
647	4	54	0	0	0	0	1	0	1	0	2	4	56	4	0.0%	0.4%	0.0%	0.1%	
	23,951	10,251	36	112	45	317	943	586	597	289	1,621	1,304	25,572	11,555	1.7%	0.7%	0.3%	0.2%	

第Ⅲ編 被害想定  
1. 建物被害の想定

表 1.4-1(12) 建物被害の想定結果【水縄断層（破壊開始：南西下部）】

	( )		( )										( )		(%)		(%)		
			SRC	RC															
100	0	1	0	0	0	0	0	0	0	0	0	0	0	1	0.0%	0.0%	0.0%	0.0%	
130	1	5	1	4	0	0	0	0	0	0	0	1	4	2	9	0.0%	0.0%	0.0%	0.0%
202	12	195	0	0	0	0	0	2	0	3	0	5	12	200	0.0%	0.4%	0.0%	0.0%	
203	2,187	1,751	2	6	7	21	123	109	94	70	226	206	2,413	1,957	2.1%	1.7%	0.5%	0.4%	
204	0	0	0	0	0	0	0	0	0	0	0	0	0	0	0.0%	0.0%	0.0%	0.0%	
205	105	125	0	0	0	0	2	6	2	4	4	10	109	135	0.2%	0.2%	0.0%	0.1%	
206	10	68	0	0	0	0	0	2	0	2	0	4	10	72	0.1%	0.3%	0.0%	0.1%	
207	0	0	0	0	0	0	0	0	0	0	0	0	0	0	0.0%	0.0%	0.0%	0.0%	
210	1,505	913	0	0	0	1	22	22	14	10	36	33	1,541	946	3.1%	1.9%	0.4%	0.3%	
211	69	152	0	0	0	0	1	2	1	2	2	4	71	156	0.3%	0.7%	0.0%	0.1%	
212	0	0	0	0	0	0	0	0	0	0	0	0	0	0	0.0%	0.0%	0.0%	0.0%	
213	0	0	0	0	0	0	0	0	0	0	0	0	0	0	0.0%	0.0%	0.0%	0.0%	
214	17	50	0	0	0	0	0	1	0	1	0	2	17	52	0.1%	0.3%	0.0%	0.0%	
215	0	0	0	0	0	0	0	0	0	0	0	0	0	0	0.0%	0.0%	0.0%	0.0%	
216	163	144	0	0	0	0	6	7	6	6	12	13	175	157	0.8%	0.7%	0.2%	0.2%	
217	8	25	0	0	0	0	0	1	0	1	0	2	8	27	0.0%	0.1%	0.0%	0.0%	
218	0	0	0	0	0	0	0	0	0	0	0	0	0	0	0.0%	0.0%	0.0%	0.0%	
219	0	0	1	3	0	3	0	0	0	0	0	1	6	1	6	0.0%	0.0%	0.0%	0.1%
220	0	0	0	0	0	0	0	0	0	0	0	0	0	0	0.0%	0.0%	0.0%	0.0%	
221	8	12	0	0	0	0	0	0	0	0	0	0	8	12	0.0%	0.1%	0.0%	0.0%	
223	0	0	0	0	0	0	0	0	0	0	0	0	0	0	0.0%	0.0%	0.0%	0.0%	
224	0	0	0	0	0	0	0	0	0	0	0	0	0	0	0.0%	0.0%	0.0%	0.0%	
225	4,149	1,078	8	10	40	149	219	89	98	34	365	282	4,514	1,360	21.4%	5.6%	5.5%	4.3%	
226	11	73	0	0	0	0	0	0	0	0	0	0	11	73	0.1%	0.4%	0.0%	0.0%	
227	145	79	0	0	0	0	1	1	3	2	4	3	149	82	0.6%	0.3%	0.1%	0.1%	
228	6,266	1,856	1	3	1	60	237	123	176	72	415	258	6,681	2,114	17.8%	5.3%	3.3%	2.1%	
229	742	561	1	2	0	1	15	17	12	10	28	30	770	591	5.0%	3.8%	0.9%	1.0%	
230	0	0	0	0	0	0	0	0	0	0	0	0	0	0	0.0%	0.0%	0.0%	0.0%	
305	0	0	0	0	0	0	0	0	0	0	0	0	0	0	0.0%	0.0%	0.0%	0.0%	
341	0	0	0	0	0	0	0	0	0	0	0	0	0	0	0.0%	0.0%	0.0%	0.0%	
342	0	0	0	0	0	0	0	0	0	0	0	0	0	0	0.0%	0.0%	0.0%	0.0%	
343	0	0	0	0	0	0	0	0	0	0	0	0	0	0	0.0%	0.0%	0.0%	0.0%	
344	0	0	0	0	0	0	0	0	0	0	0	0	0	0	0.0%	0.0%	0.0%	0.0%	
345	0	0	0	0	0	0	0	0	0	0	0	0	0	0	0.0%	0.0%	0.0%	0.0%	
348	0	0	0	0	0	0	0	0	0	0	0	0	0	0	0.0%	0.0%	0.0%	0.0%	
349	0	0	0	0	0	0	0	0	0	0	0	0	0	0	0.0%	0.0%	0.0%	0.0%	
381	0	0	0	0	0	0	0	0	0	0	0	0	0	0	0.0%	0.0%	0.0%	0.0%	
382	0	0	0	0	0	0	0	0	0	0	0	0	0	0	0.0%	0.0%	0.0%	0.0%	
383	0	1	0	0	0	0	0	0	0	0	0	0	0	1	0.0%	0.0%	0.0%	0.0%	
384	0	0	0	0	0	0	0	0	0	0	0	0	0	0	0.0%	0.0%	0.0%	0.0%	
401	0	2	0	0	0	0	0	0	0	0	0	0	0	2	0.0%	0.0%	0.0%	0.0%	
402	0	0	0	0	0	0	0	0	0	0	0	0	0	0	0.0%	0.0%	0.0%	0.0%	
421	0	0	0	0	0	0	0	0	0	0	0	0	0	0	0.0%	0.0%	0.0%	0.0%	
447	720	518	0	1	0	1	38	34	14	9	52	45	772	563	4.6%	3.3%	1.3%	1.1%	
448	107	67	0	0	0	0	6	5	1	1	7	6	114	73	3.9%	2.5%	1.3%	1.1%	
503	502	234	0	0	0	3	33	18	14	7	47	28	549	262	8.0%	3.7%	1.3%	0.8%	
522	0	0	0	0	0	0	0	0	0	0	0	0	0	0	0.0%	0.0%	0.0%	0.0%	
544	202	202	0	0	0	0	2	5	2	2	4	7	206	209	2.2%	2.2%	0.1%	0.2%	
601	3	11	0	0	0	0	0	0	0	0	0	0	3	11	0.0%	0.2%	0.0%	0.0%	
602	13	38	0	0	0	0	0	0	0	1	0	1	13	39	0.2%	0.5%	0.0%	0.1%	
604	0	0	0	0	0	0	0	0	0	0	0	0	0	0	0.0%	0.0%	0.0%	0.0%	
605	0	0	0	0	0	0	0	0	0	0	0	0	0	0	0.0%	0.0%	0.0%	0.0%	
608	0	0	0	0	0	0	0	0	0	0	0	0	0	0	0.0%	0.0%	0.0%	0.0%	
609	10	24	0	0	0	0	0	0	0	0	0	0	10	24	0.5%	1.2%	0.0%	0.0%	
610	0	1	0	0	0	0	0	0	0	0	0	0	0	1	0.0%	0.0%	0.0%	0.0%	
621	0	0	0	0	0	0	0	0	0	0	0	0	0	0	0.0%	0.0%	0.0%	0.0%	
625	0	2	0	0	0	0	0	0	0	0	0	0	0	2	0.0%	0.0%	0.0%	0.0%	
642	0	0	0	0	0	0	0	0	0	0	0	0	0	0	0.0%	0.0%	0.0%	0.0%	
646	0	0	0	0	0	0	0	0	0	0	0	0	0	0	0.0%	0.0%	0.0%	0.0%	
647	55	214	0	0	0	0	1	5	1	2	2	7	57	221	0.4%	1.6%	0.1%	0.3%	
	17,010	8,402	14	29	48	239	706	449	438	239	1,206	956	18,216	9,358	1.2%	0.6%	0.2%	0.2%	

第Ⅲ編 被害想定  
1. 建物被害の想定

表 1.4-1(13) 建物被害の想定結果【基盤一定 M6.9 深さ10km】

	( )				( )								( )				(%)		(%)	
	SRC		RC																	
100	4,711	3,785	40	162	0	15	187	237	130	130	357	544	5,068	4,329	2.4%	1.9%	0.4%	0.7%		
130	1,671	1,132	79	164	4	47	65	53	30	23	178	287	1,849	1,419	1.0%	0.7%	0.2%	0.3%		
202	4,265	1,449	4	22	1	35	72	57	50	28	127	142	4,392	1,591	8.6%	2.9%	0.9%	1.1%		
203	2,829	2,155	3	10	0	18	142	130	113	85	258	243	3,087	2,398	2.8%	2.1%	0.5%	0.5%		
204	31	120	0	0	0	0	0	1	0	1	0	2	31	122	0.1%	0.5%	0.0%	0.0%		
205	594	400	0	0	0	1	21	13	11	8	32	22	626	422	1.1%	0.7%	0.2%	0.1%		
206	573	521	1	6	0	1	20	19	18	15	39	41	612	562	2.9%	2.7%	0.6%	0.6%		
207	431	829	0	0	0	0	4	9	3	5	7	14	438	843	1.3%	2.4%	0.1%	0.1%		
210	1,508	1,145	0	0	0	2	31	31	17	14	48	47	1,556	1,192	3.1%	2.4%	0.5%	0.5%		
211	568	353	0	3	0	0	7	10	6	5	13	18	581	371	2.7%	1.7%	0.2%	0.2%		
212	147	463	0	0	0	0	0	3	1	3	1	6	148	469	0.7%	2.4%	0.0%	0.1%		
213	504	848	0	1	0	1	18	33	13	19	31	54	535	902	1.8%	3.0%	0.4%	0.7%		
214	886	854	0	1	0	3	19	29	12	16	31	49	917	903	4.6%	4.5%	0.7%	1.2%		
215	207	449	0	1	0	0	7	32	2	6	9	39	216	488	1.2%	2.5%	0.2%	0.8%		
216	256	156	0	3	0	0	10	9	10	7	20	19	276	175	1.3%	0.8%	0.3%	0.2%		
217	204	366	1	11	0	1	16	34	10	21	27	67	231	433	0.9%	1.6%	0.2%	0.4%		
218	15	37	4	9	0	3	1	2	1	2	6	16	21	53	0.1%	0.2%	0.1%	0.2%		
219	39	109	19	20	21	27	2	9	1	3	43	59	82	168	0.2%	0.7%	0.5%	0.7%		
220	163	207	0	0	0	0	1	4	1	2	2	6	165	213	0.4%	0.5%	0.0%	0.0%		
221	187	238	1	5	1	4	11	27	6	13	19	49	206	287	0.9%	1.1%	0.2%	0.6%		
223	115	262	0	1	0	0	4	13	1	3	5	17	120	279	0.6%	1.4%	0.1%	0.2%		
224	33	80	3	1	8	2	1	2	0	0	12	5	45	85	0.1%	0.4%	0.2%	0.1%		
225	3,549	793	5	8	0	42	195	64	89	25	289	139	3,838	932	18.3%	4.1%	4.4%	2.1%		
226	761	453	0	1	0	0	9	10	4	3	13	14	774	467	4.4%	2.6%	0.3%	0.4%		
227	254	154	0	1	0	0	2	2	6	4	8	7	262	161	1.1%	0.6%	0.2%	0.1%		
228	5,103	2,010	1	2	0	35	197	117	148	75	346	229	5,449	2,239	14.5%	5.7%	2.8%	1.8%		
229	2,221	582	3	4	1	35	53	21	36	12	93	72	2,314	654	15.0%	3.9%	3.0%	2.3%		
230	2,294	1,221	1	4	1	14	84	65	44	24	130	107	2,424	1,328	5.2%	2.7%	1.4%	1.1%		
305	3	13	4	14	0	3	0	0	0	0	4	17	7	30	0.0%	0.1%	0.1%	0.3%		
341	45	175	0	1	0	0	0	3	1	3	1	7	46	182	0.4%	1.4%	0.0%	0.2%		
342	0	5	1	3	0	4	0	0	0	0	1	7	1	12	0.0%	0.1%	0.0%	0.2%		
343	0	3	5	11	1	12	0	0	0	0	6	23	6	26	0.0%	0.0%	0.1%	0.5%		
344	47	45	1	3	0	3	5	5	1	1	7	12	54	57	0.5%	0.5%	0.2%	0.4%		
345	43	43	0	0	0	1	0	1	0	1	0	3	43	46	0.7%	0.7%	0.0%	0.1%		
348	1	7	0	1	0	0	0	0	0	0	0	1	1	8	0.0%	0.2%	0.0%	0.1%		
349	1	13	3	7	1	19	0	0	0	0	4	26	5	39	0.0%	0.1%	0.1%	0.5%		
381	20	18	0	0	0	0	0	0	0	0	0	0	20	18	0.3%	0.2%	0.0%	0.0%		
382	32	101	0	0	0	0	1	3	0	1	1	4	33	105	0.3%	1.0%	0.0%	0.1%		
383	30	48	0	1	0	0	0	1	0	1	0	3	30	51	0.2%	0.4%	0.0%	0.1%		
384	58	79	0	0	0	0	1	3	1	2	2	5	60	84	0.6%	0.8%	0.1%	0.2%		
401	45	31	0	0	0	0	0	0	0	0	0	0	45	31	1.1%	0.7%	0.0%	0.0%		
402	117	185	0	0	0	0	0	0	0	0	0	0	117	185	1.2%	1.9%	0.0%	0.0%		
421	1	14	0	0	0	0	0	0	0	0	0	0	1	14	0.0%	0.2%	0.0%	0.0%		
447	1,153	483	0	1	0	2	64	37	19	9	83	49	1,236	532	7.4%	3.1%	2.1%	1.2%		
448	84	62	0	0	0	0	6	4	1	1	7	5	91	67	3.1%	2.3%	1.3%	1.0%		
503	441	232	0	0	0	1	28	16	12	7	40	24	481	256	7.0%	3.7%	1.1%	0.7%		
522	41	108	0	0	0	0	0	0	0	0	0	0	41	108	0.6%	1.5%	0.0%	0.0%		
544	338	229	0	1	0	2	5	9	4	3	9	15	347	244	3.7%	2.5%	0.3%	0.4%		
601	350	370	1	3	0	1	11	17	9	14	21	35	371	405	4.9%	5.2%	1.1%	1.8%		
602	98	135	0	0	0	0	0	1	3	3	3	4	101	139	1.3%	1.9%	0.2%	0.3%		
604	152	107	0	0	0	0	4	4	11	9	15	13	167	120	3.5%	2.5%	1.1%	0.9%		
605	6	44	0	1	0	0	0	0	0	1	0	2	6	46	0.1%	0.5%	0.0%	0.1%		
608	19	54	0	0	0	0	0	0	0	0	0	0	19	54	0.7%	1.9%	0.0%	0.0%		
609	95	91	0	0	0	0	1	1	1	2	2	3	97	94	4.8%	4.6%	0.5%	0.8%		
610	67	98	0	0	0	0	2	2	2	2	4	4	71	102	0.7%	1.0%	0.2%	0.2%		
621	136	111	1	3	0	0	4	6	2	2	7	11	143	122	1.3%	1.0%	0.1%	0.2%		
625	372	696	0	1	0	0	9	19	15	33	24	53	396	749	2.4%	4.5%	0.8%	1.7%		
642	53	179	0	1	0	1	1	5	0	2	1	9	54	188	1.1%	3.8%	0.1%	0.9%		
646	725	591	0	0	0	0	18	19	4	5	22	24	747	615	10.2%	8.3%	1.9%	2.1%		
647	2,196	1,150	1	2	0	15	45	32	24	16	70	65	2,266	1,215	16.3%	8.5%	3.3%	3.1%		
	40,888	26,691	182	494	39	350	1,384	1,224	873	670	2,478	2,738	43,366	29,429	2.9%	1.9%	0.5%	0.5%		