

.....

.....  
.....  
.....

.....

.....

.....

.....

.....

.....

.....

.....

.....

.....

.....

.....

.....

.....

.....

.....

.....

.....

.....

.....

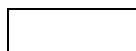
.....

(                      (

.....

.....

.....



.....

.....

.....

.....

.....

.....

.....

.....

.....

.....

.....

.....

.....

.....



.....

.....

.....

.....

.....

.....

.....

.....

.....

.....

.....

.....

.....

.....

.....

.....

.....

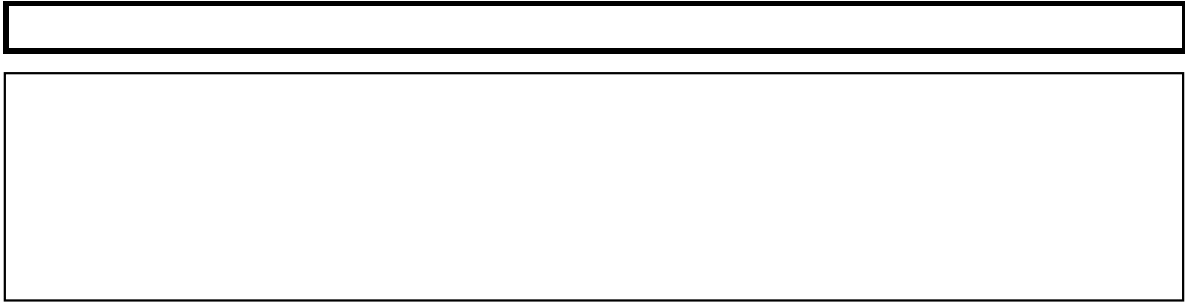
.....

.....

.....

		(	
		10	11
		*1 8 32 8 25 9 88 *2 8 22	*1 9 1.1 9 0.9 10 10.6 *2 9 0.1
		*1 *2	*1 *2
		8	9
		15,300  106 108 0.4%	14,500  17,400  114 118 0.4 0.5%





22 =100

(2013)	11	102.1	1.2
	12	103.2	1.1
(2014)		108.4	5.0
		110.4	1.8
		112.0	1.4
		102.6	8.4
		107.2	4.5
		106.3	0.8
		99.4	6.5
		101.9	2.5
		99.8	2.1
	10	102.1	2.3
	11	102.8	0.7

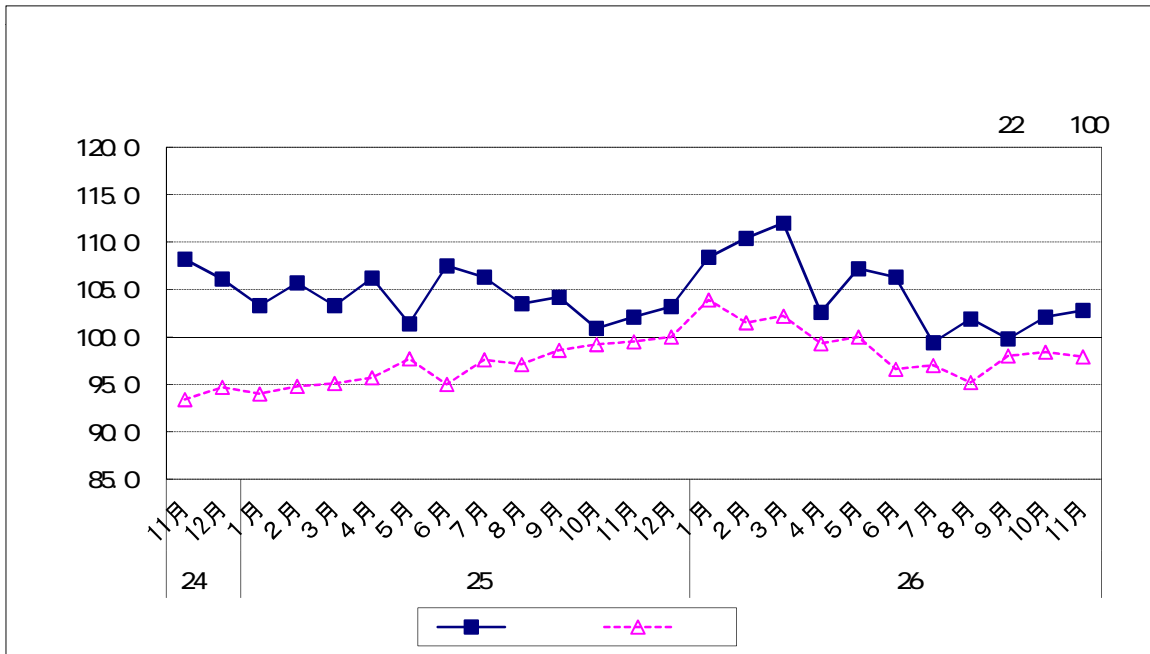
22 =100

2013	10	106.9	1.7
	12	104.1	2.6
		105.0	0.9
		104.7	0.3
(2014)	10	102.1	2.5
	12	110.3	8.0
		105.4	4.4
		100.4	4.7

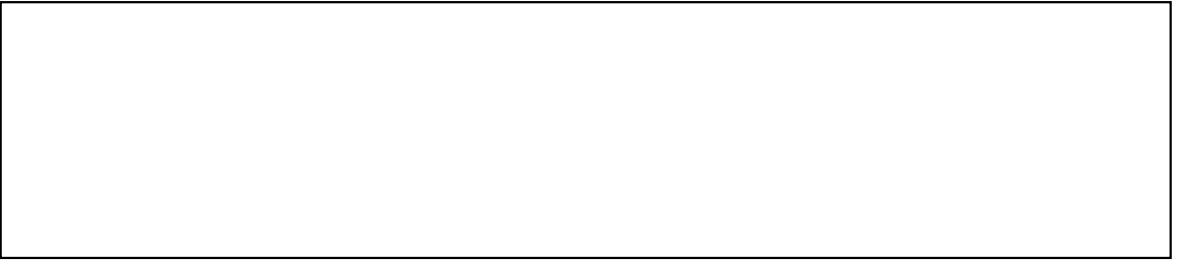
22 =100

(2011)	101.7	1.7
(2012)	107.2	5.4
(2013)	103.9	3.1

( 26 )







22 =100

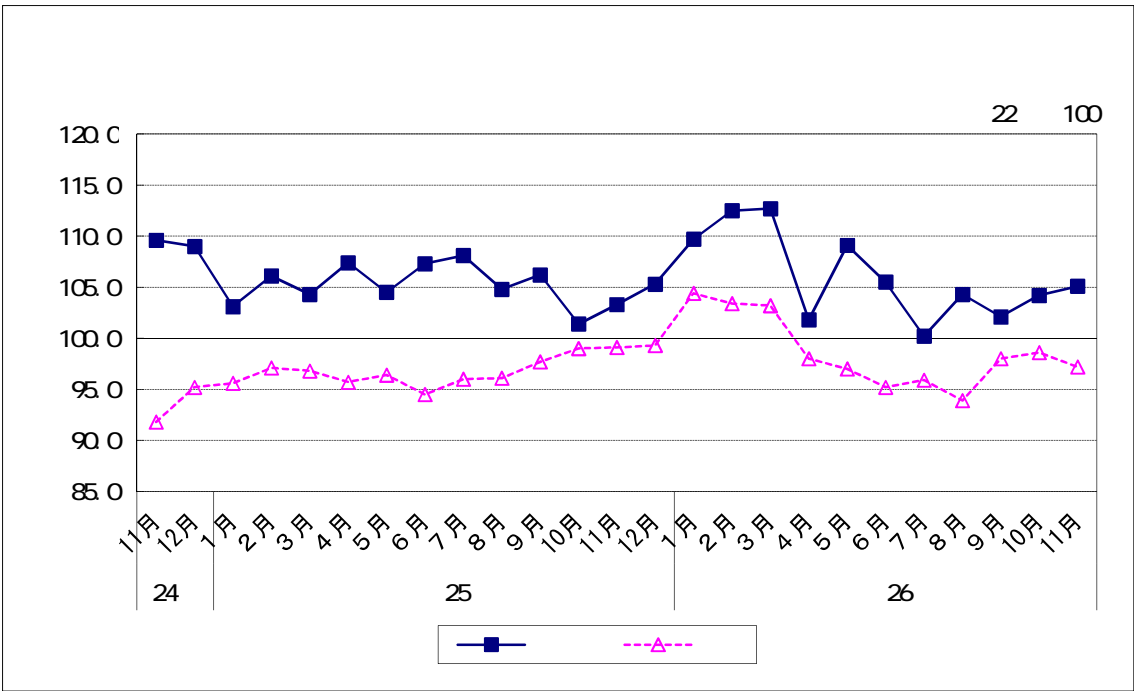
(2013)	11	103.3	1.9
	12	105.3	1.9
(2014)		109.7	4.2
		112.5	2.6
		112.7	0.2
		101.8	9.7
		109.1	7.2
		105.5	3.3
		100.2	5.0
		104.3	4.1
		102.1	2.1
	10	104.2	2.1
	11	105.1	0.9

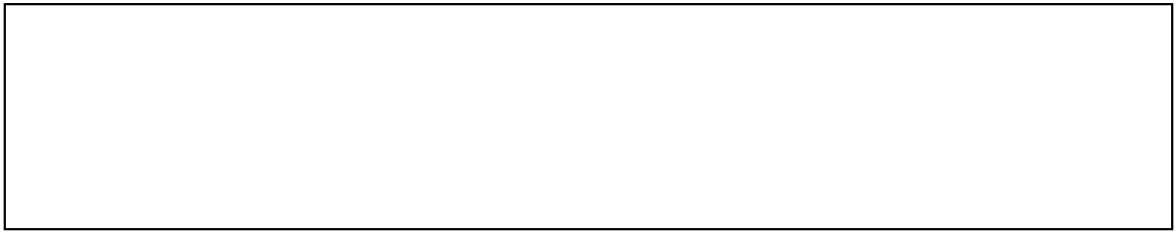
22 =100

2013	10	108.6	0.6
		104.5	3.8
		106.4	1.8
		106.4	0.0
	12	103.3	2.9
(2014)		111.6	8.0
		105.5	5.5
		102.2	3.1

22 =100

	(2011)	102.8	2.8
	(2012)	108.6	5.6
	(2013)	105.1	3.2





22 =100

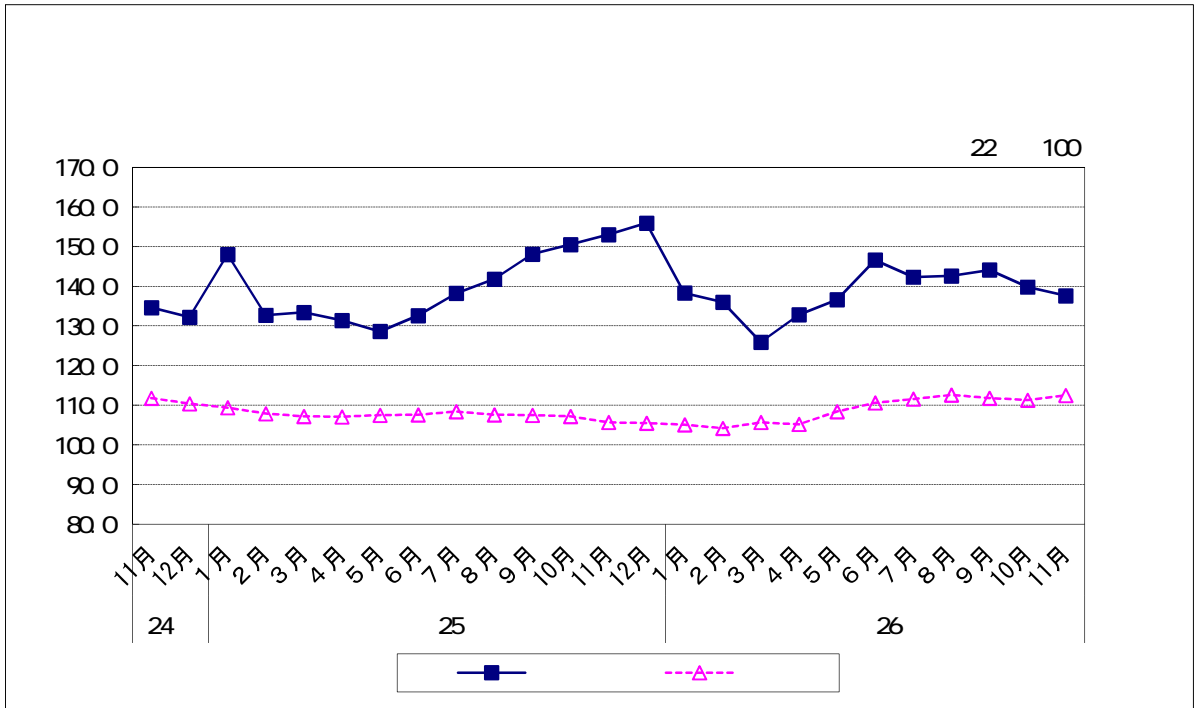
(2013)	11	153.0	1.7
	12	155.9	1.9
(2014)		138.3	11.3
		136.0	1.7
		125.9	7.4
		132.8	5.5
		136.6	2.9
		146.6	7.3
		142.3	2.9
		142.6	0.2
		144.1	1.1
	10	139.8	3.0
	11	137.6	1.6

22 =100

2013	10 12	132.2	2.5
		133.4	0.9
		132.6	0.6
		148.1	11.7
(2014)	10 12	155.9	5.3
		125.9	19.2
		146.6	16.4
		144.1	1.7

22 =100

	(2011)	120.8	9.8
	(2012)	130.6	8.1
	(2013)	156.4	19.8





22 =100

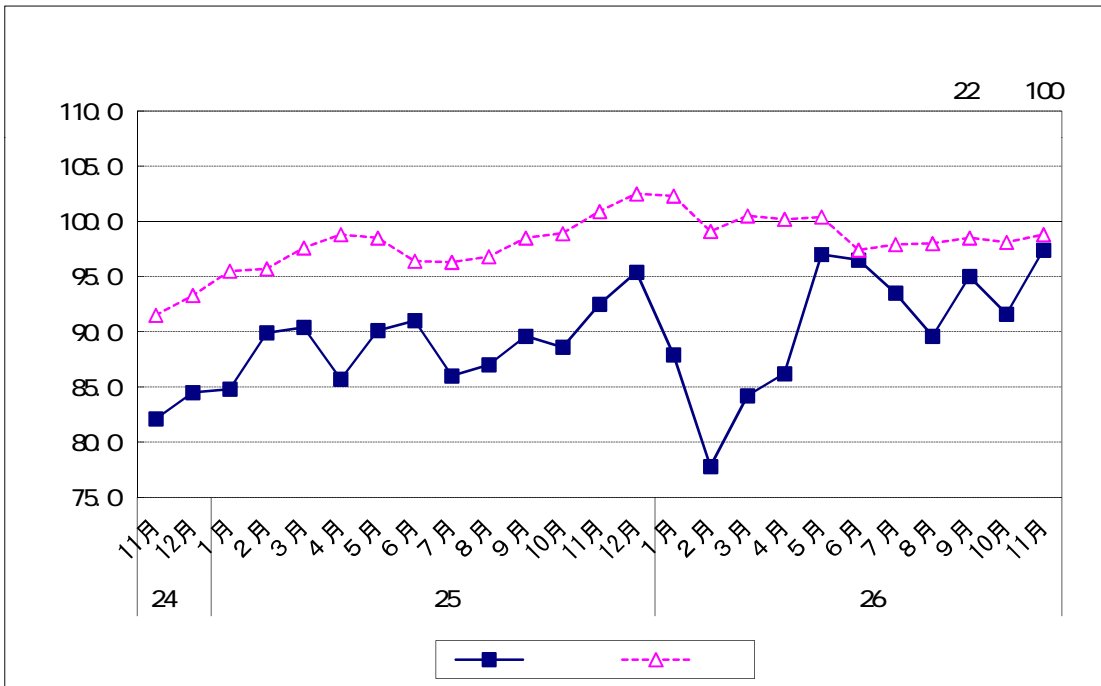
(2013)	11	92.5	4.4
	12	95.4	3.1
(2014)		87.9	7.9
		77.8	11.5
		84.2	8.2
		86.2	2.4
		97.0	12.5
		96.5	0.5
		93.5	3.1
		89.6	4.2
		95.0	6.0
		10	91.6
	11	97.4	6.3

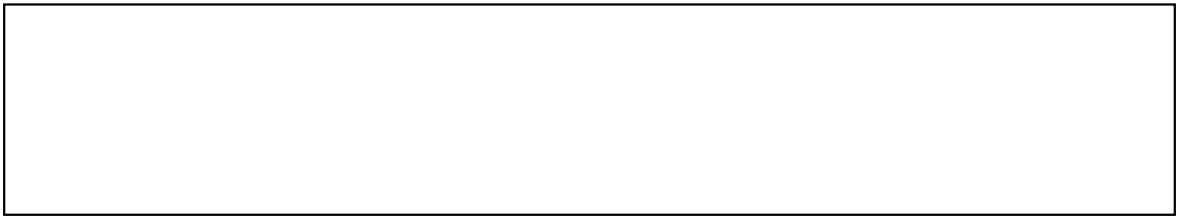
22 =100

	10	12	84.1	7.6
2013			88.4	5.1
			88.9	0.6
			87.5	1.6
	10	12	92.2	5.4
(2014)			83.3	9.7
			93.2	11.9
			92.7	0.5

22 =100

	(2011)	96.8	3.2
	(2012)	91.0	6.0
	(2013)	89.1	2.1





22 =100

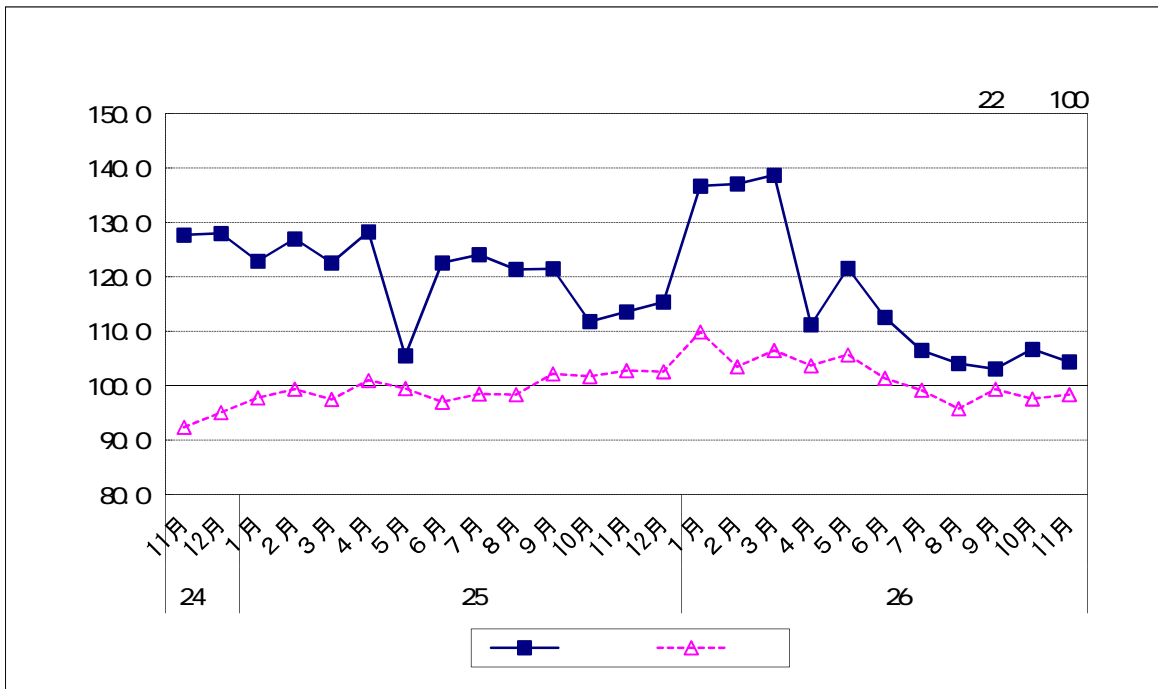
(2013)	11	113.6	1.6
	12	115.4	1.6
(2014)		136.7	18.5
		137.1	0.3
		138.7	1.2
		111.2	19.8
		121.6	9.4
		112.6	7.4
		106.5	5.4
		104.1	2.3
		103.1	1.0
	10	106.7	3.5
	11	104.4	2.2

22 =100

2013	10	127.0	4.3
		124.2	2.2
		118.8	4.3
		122.3	2.9
	10	113.6	7.1
(2014)		137.5	21.0
		115.1	16.3
	104.6	9.1	

22 =100

(2011)	109.7	9.7
(2012)	126.7	15.5
(2013)	119.6	5.6



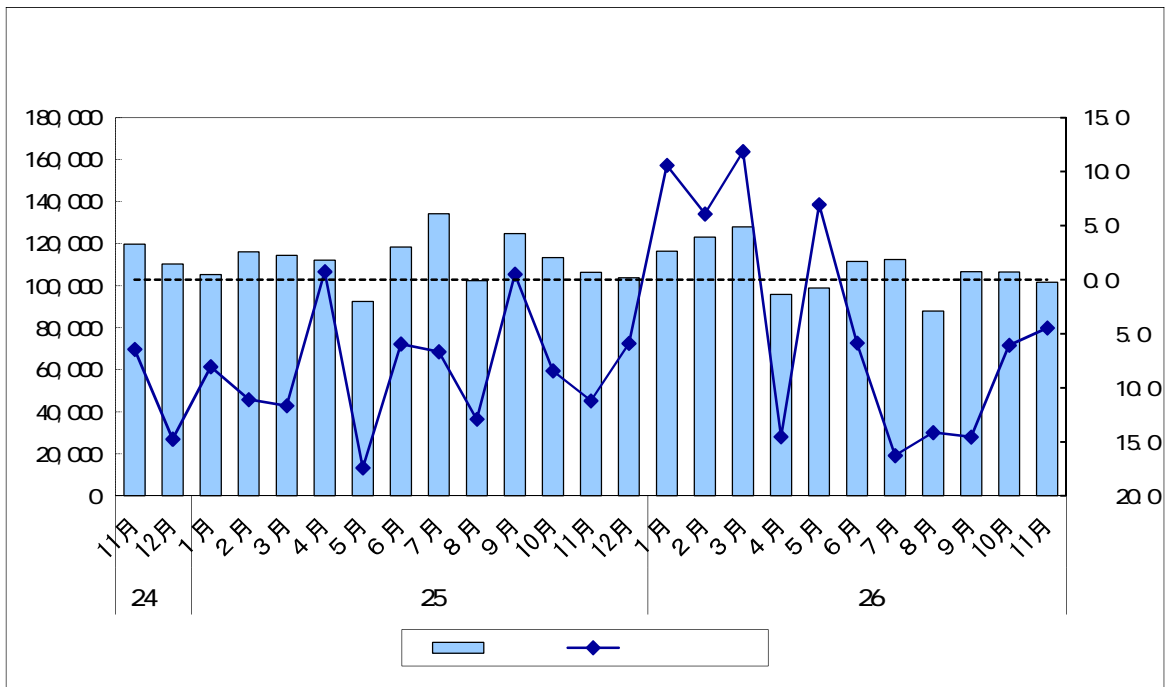


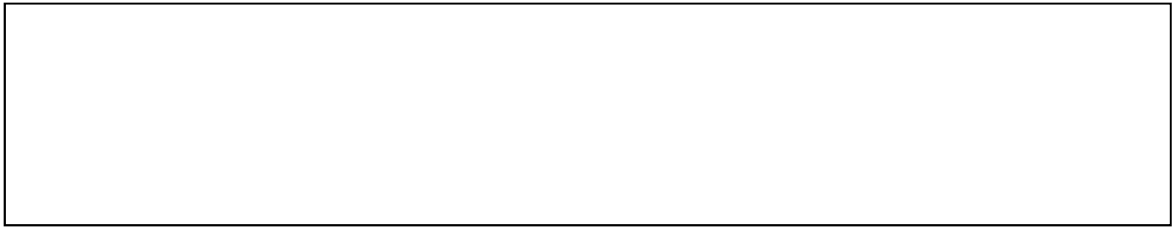
(2013)	11	106,342	11.2
	12	103,834	5.9
(2014)		116,424	10.6
		123,149	6.1
		127,935	11.9
		95,854	14.5
		98,950	7.0
		111,533	5.8
		112,462	16.3
		87,878	14.1
		106,686	14.5
	10	r 106,496	6.1
11	p 101,595	4.5	

2013	10 12	353,891	8.4
		335,743	10.4
		323,127	7.5
		361,493	6.3
	10 12	323,548	8.6
(2014)		367,508	9.5
		306,337	5.2
	r	307,026	15.1

(2011)		1,192,637	4.6
(2012)		1,463,300	22.7
(2013)	r	1,343,911	8.2

p r





22 =100

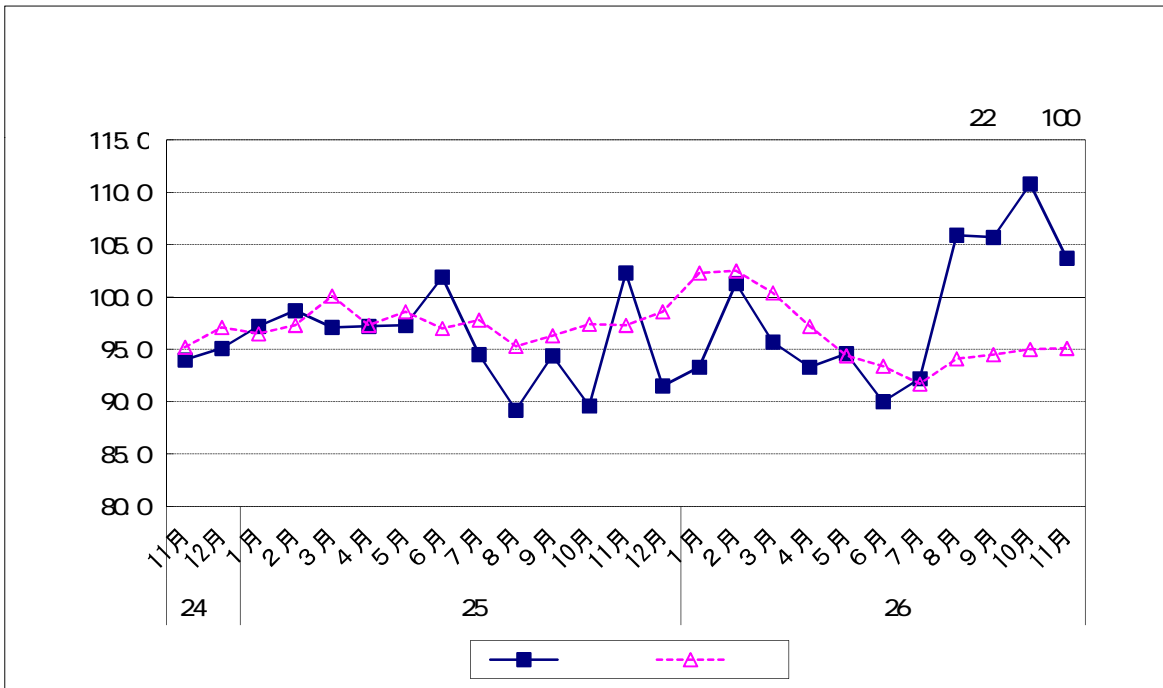
(2013)	11	102.3	14.2
	12	91.5	10.6
(2014)		93.3	2.0
		101.3	8.6
		95.7	5.5
		93.3	2.5
		94.6	1.4
		90.0	4.9
		92.2	2.4
		105.9	14.9
		105.7	0.2
	10	110.8	4.8
	11	103.7	6.4

22 =100

2013	10	12	95.8	3.1
			97.7	2.0
			98.8	1.1
			92.7	6.2
	10	12	94.5	1.9
(2014)			96.8	2.4
			92.6	4.3
		101.3	9.4	

22 =100

(2011)		92.4	7.6
(2012)		96.2	4.1
(2013)		95.9	0.3





22 =100

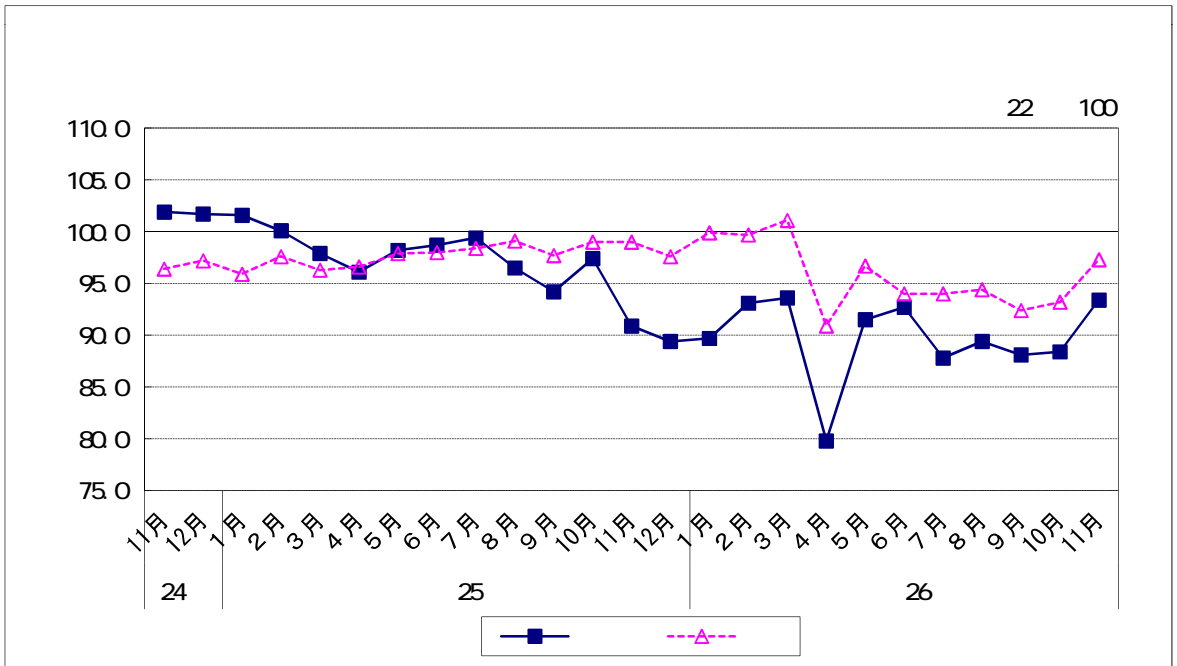
(2013)	11	90.9	6.7
	12	89.4	1.7
(2014)		89.7	0.3
		93.1	3.8
		93.6	0.5
		79.8	14.7
		91.5	14.7
		92.7	1.3
		87.8	5.3
		89.4	1.8
		88.1	1.5
	10	88.4	0.3
	11	93.4	5.7

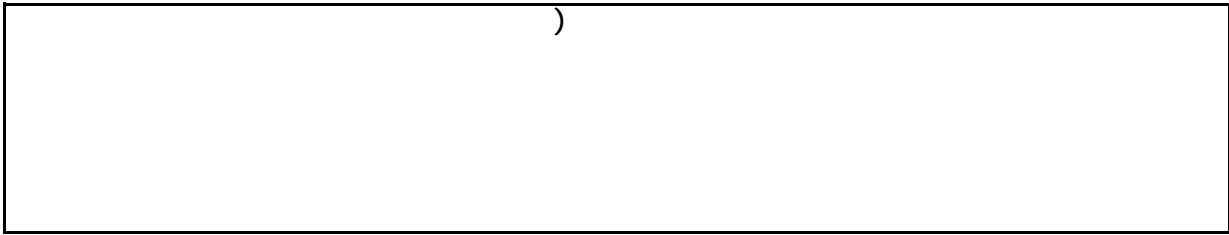
22 =100

	10 12	101.8	3.8
2013		99.9	1.9
		97.7	2.2
		96.7	1.0
(2014)	10 12	92.6	4.2
		92.1	0.5
		88.0	4.5
		88.4	0.5

22 =100

(2011)	98.3	1.7
(2012)	101.2	3.0
(2013)	96.5	4.6



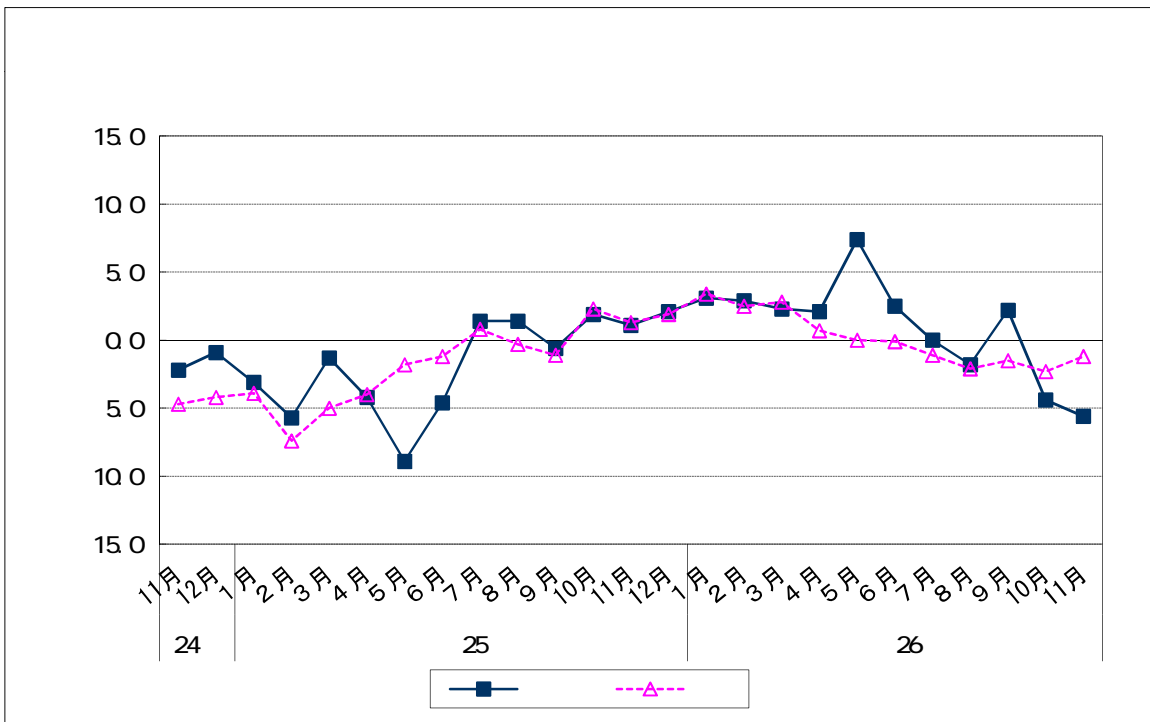


		(MWh)	
(2013)	11	721, 276	1. 1
	12	723, 732	2. 1
(2014)		699, 295	3. 1
		672, 582	2. 9
		742, 309	2. 3
		711, 045	2. 1
		735, 646	7. 4
		745, 803	2. 5
		765, 023	0. 0
		730, 842	1. 8
		735, 322	2. 2
	10	707, 996	4. 4
11	680, 966	5. 6	

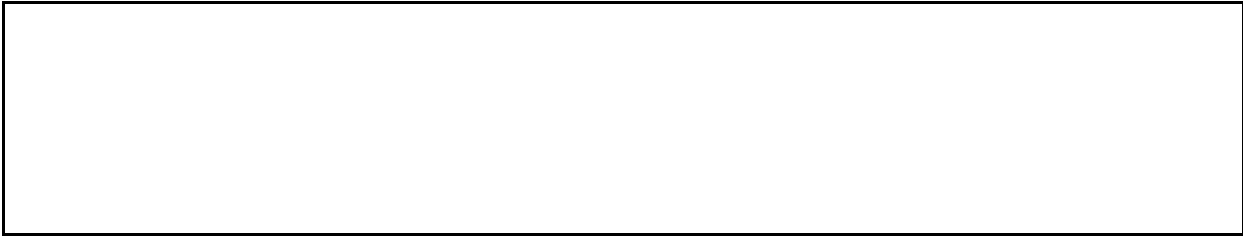
		(MWh)	
2013	10 12	2, 149, 068	2. 2
		2, 057, 984	3. 3
		2, 109, 047	5. 9
		2, 229, 098	0. 7
2014	10 12	2, 185, 325	1. 7
		2, 114, 186	2. 7
		2, 192, 494	4. 0
		2, 231, 187	0. 1

		(MWh)	
	(2011)	8, 663, 026	0. 6
	(2012)	8, 732, 022	0. 8
	(2013)	8, 581, 454	1. 7

wh







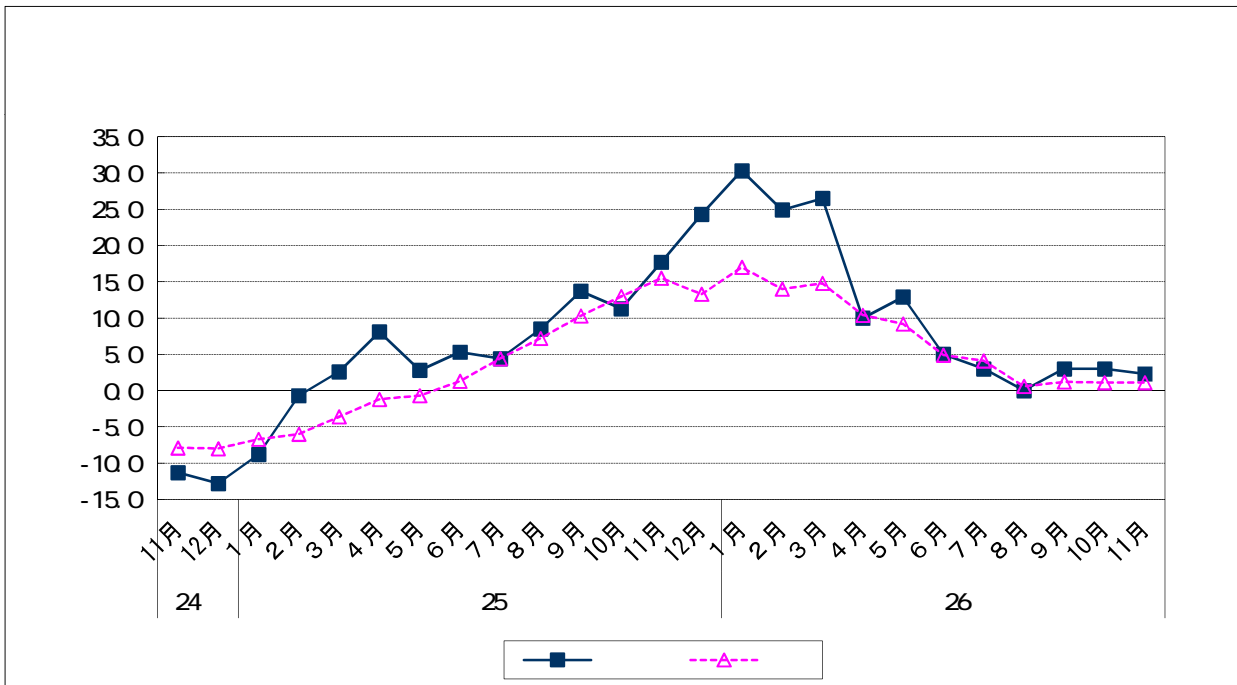
( 22 =100)

(2013)	11	17.2	107.5	17.7
	12	18.9	118.1	24.3
(2014)		17.6	110.0	30.3
		19.1	119.4	24.9
		20.0	125.0	26.5
		17.6	110.0	10.0
		16.7	104.4	12.9
		16.8	105.0	5.0
		17.2	107.5	3.0
		16.5	103.1	0.0
		17.1	106.9	3.0
	10	17.2	107.5	3.0
	11	17.6	110.0	2.3

(2011)	15.5	1.2
(2012)	15.1	7.0
(2013)	16.2	7.4

30

22 100



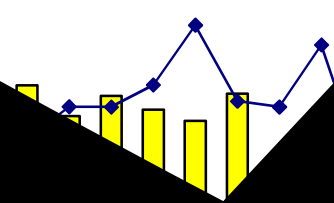
--

--

	13.8
	13.1
	19.7
	6.5
	1.3
	10.5
	4.0
	2.9
	2.9
	2.1
5	5.2
7	12.2
77	12.7

	1 3	927,451	7.6
	4 6	1,063,782	5.9
	7 9	1,132,732	12.0
	10 12	1,100,805	16.8
	1 3	1,044,530	12.6
	4 6	1,076,527	1.2
	7 9	1,139,499	0.6
	10 12	1,211,529	10

	24 (2012)	3,962,437
	25 (2013)	4,224,766
	26 (2014)	4,472,000



--	--	--	--	--	--	--	--	--	--	--	--

--	--	--	--	--	--	--	--	--	--	--	--

25	12	384,043	71,359	42,824	98,085	47,633	27,974	27,845	9,346	12,628	89,173
	1	298,063	50,557	33,140	74,437	41,803	22,014	24,024	8,348	9,217	67,663
	2	356,116	58,673	34,569	87,603	49,057	26,973	23,800	10,689	7,668	91,654
	3	390,350	75,938	41,106	91,529	54,413	27,830	27,946	10,030	9,496	93,169
	4	358,214	73,345	42,313	91,390	44,439	29,227	22,089	9,024	9,458	79,241
	5	347,597	72,097	41,966	86,958	37,534	27,617	24,006	6,926	10,358	82,101
	6	370,716	69,954	40,078	112,078	34,794	31,250	27,091	6,226	11,135	78,187
	7	382,379	86,515	54,051	98,803	34,737	27,347	25,909	9,099	11,044	88,923
	8	367,750	93,122	57,891	87,413	34,148	27,518	26,575	10,191	11,856	76,927
	9	389,371	98,442	60,810	91,247	41,470	23,995	31,583	9,186	12,432	81,016
	10	383,815	103,368	64,279	79,694	39,587	27,113	24,953	11,820	10,253	87,027
	11	394,737	96,829	63,281	88,738	54,132	26,990	27,598	10,855	10,214	79,382
	12	432,977	93,930	64,656	100,911	63,163	30,682	28,960	11,288	14,076	89,967

25	12	13.8	22.0	13.9	2.4	48.5	9.2	29.6	6.1	7.2	13.2
	1	13.1	3.0	8.2	9.7	87.9	10.4	24.8	13.5	11.0	0.5
	2	19.7	23.0	18.0	24.0	62.9	7.5	6.2	50.4	15.1	7.4
	3	6.5	2.1	4.8	31.4	12.8	13.9	6.5	4.0	37.3	6.7
	4	1.3	8.6	10.4	5.3	23.9	11.6	7.7	8.5	13.8	8.8
	5	10.5	0.5	7.3	32.7	19.5	14.2	13.1	7.0	13.7	22.9
	6	4.0	5.8	15.4	17.5	18.4	1.6	5.2	29.2	14.4	18.5
	7	2.9	24.1	23.1	6.1	28.0	14.7	10.6	6.3	9.9	2.3
	8	2.9	24.1	27.3	0.8	18.4	7.1	0.8	28.4	8.4	1.7
	9	2.1	21.8	34.7	9.7	6.3	8.1	20.8	4.2	1.6	1.2
	10	5.2	25.4	37.9	13.7	2.0	8.7	9.0	27.9	9.7	2.5
	11	12.2	29.6	40.5	9.5	54.5	2.1	22.4	37.3	5.1	5.5
	12	12.7	31.6	51.0	2.9	32.6	9.7	4.0	20.8	11.5	0.9

24 (2012)		3,962,437	803,505	468,488	1,061,995	417,069	308,613	271,606	91,050	109,842	898,756
25 (2013)		4,224,769	838,655	499,157	1,048,513	466,304	341,654	306,449	100,470	135,205	987,520
26 (2014)		4,472,085	972,770	598,140	1,090,801	529,276	328,555	314,534	113,684	127,208	995,257

24 (2012)		2.0	21.5	25.9	4.7	20.4	9.1	12.7	8.8	22.5	2.0
25 (2013)		6.6	4.4	6.5	1.3	11.8	10.7	12.8	10.3	23.1	9.9
26 (2014)		5.9	16.0	19.8	4.0	13.5	3.8	2.6	13.2	5.9	0.8

--	--	--	--	--	--	--	--	--	--	--	--	--	--

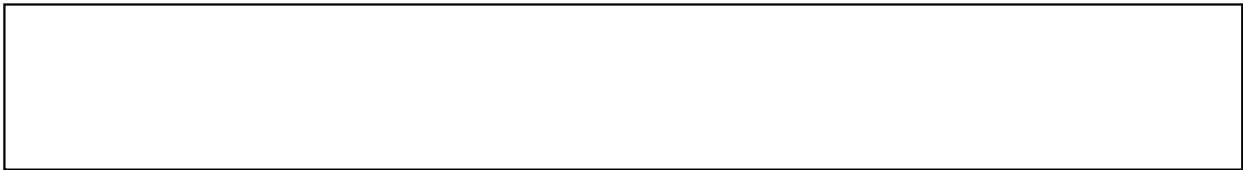
--	--	--	--	--	--	--	--	--	--	--	--	--	--

25	12	225,707	27.2	89,868	62.0	45,815	7.6	22,372	13.0	64,418	20.9	29,883	48.0
26 2014	1	176,466	12.7	64,708	33.3	38,009	11.6	17,326	21.5	50,623	0.8	23,320	40.2
	2	208,065	25.2	85,798	59.1	40,889	12.0	22,155	27.8	57,400	6.9	24,684	27.4
	3	238,501	2.5	96,952	21.6	46,845	16.8	24,267	1.4	57,165	19.5	25,200	7.9
	4	217,452	0.6	84,544	8.6	44,127	7.6	22,809	18.9	65,473	3.9	23,321	16.3
	5	204,461	1.2	77,304	8.6	38,693	18.8	22,229	8.2	46,743	6.1	30,802	70.5
	6	213,258	13.0	83,353	3.2	39,314	12.7	23,135	30.3	57,613	8.1	32,421	69.3
	7	234,064	1.4	86,466	10.2	46,690	5.1	28,051	23.5	54,157	24.2	33,622	57.9
	8	227,114	6.4	85,320	1.5	42,411	1.5	23,191	0.7	56,284	9.5	30,568	42.1
	9	242,855	5.6	89,973	2.5	54,374	7.9	21,179	4.3	50,842	24.4	33,884	51.3
	10	241,657	13.3	85,797	16.3	49,144	1.7	24,535	20.0	43,925	38.2	34,013	36.7
	11	257,082	20.8	90,459	16.8	57,790	47.4	26,287	24.5	41,865	24.6	28,469	28.4
12	267,255	18.4	95,546	6.3	59,585	30.1	26,377	17.9	65,922	2.3	36,798	23.1	

24 (2012)		2,288,977	0.0	866,300	0.0	487,318	5.1	237,321	3.6	812,032	8.3	266,819	4.9
25 (2013)		2,554,030	11.6	933,570	7.8	540,191	10.8	266,927	12.5	725,094	10.7	258,789	3.0
26 (2014)		2,728,230	6.8	1,026,220	9.9	557,872	3.3	281,542	5.5	648,011	10.6	357,103	38.0

26 2014 11													
		257,082	20.8	90,459	16.8	57,790	47.4	26,287	24.5	41,865	24.6	28,469	28.4
		80,826	33.4	22,423	22.2	16,956	50.4	5,212	27.7	7,304	6.1	6,911	33.0
		58,180	42.9	10,185	45.3	14,912	54.3	4,622	35.0	1,837	9.5	3,257	25.4
		35,303	4.6	24,902	1.4	2,253	73.4	3,727	17.5	10,169	67.6	7,013	223.6
		41,057	60.2	16,544	68.8	14,401	140.4	1,911	28.3	5,618	55.0	3,544	18.1
		3,904	1.2	1,057	17.2	103	47.6	164	27.3	3,634	9.6	3,438	13.9
		18,099	22.7	3,909	10.9	4,733	37.3	1,527	31.9	4,332	97.2	954	60.4
		8,945	57.4	2,516	67.5	2,032	84.7	1,529	59.9	397	29.0	454	46.6
		10,167	4.6	4,788	3.6	3,750	6.3	1,242	14.6	21	11.5	18	76.2
		58,782	1.7	14,319	13.9	13,560	9.7	10,976	41.3	10,390	38.1	6,137	2.6

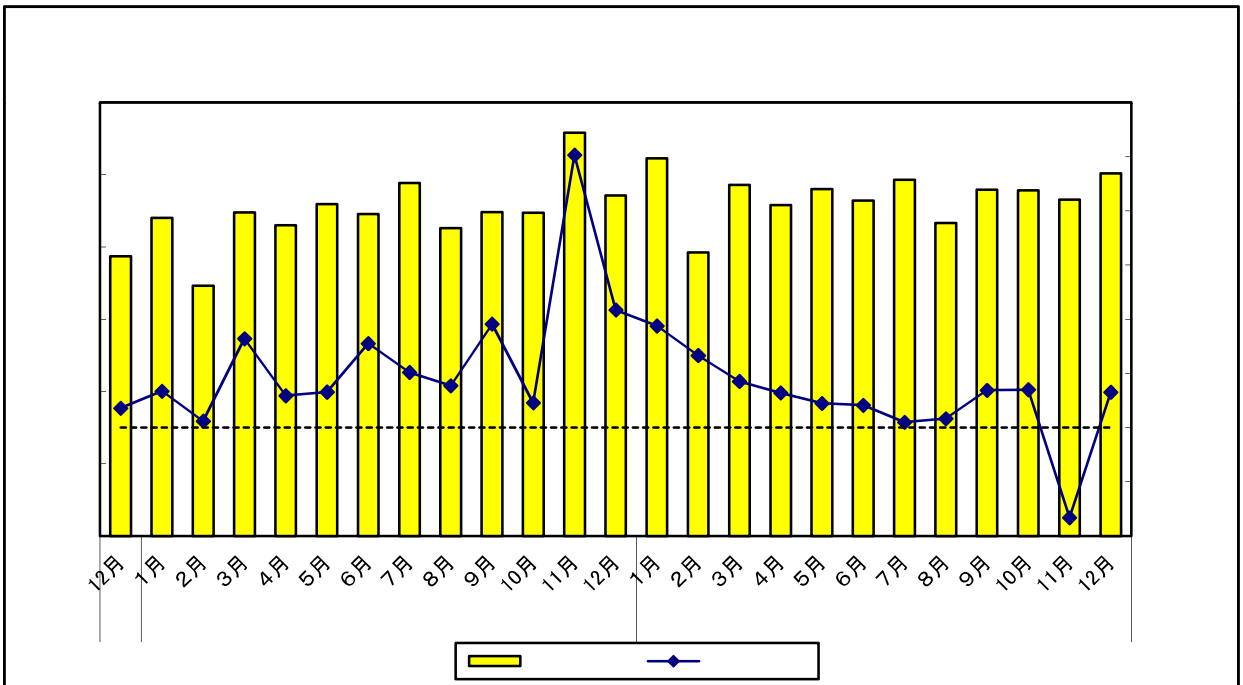
26 2014 12													
		267,255	18.4	95,546	6.3	59,585	30.1	26,377	17.9	65,922	2.3	36,798	23.1
		79,119	40.5	19,590	12.3	18,979	64.6	5,438	49.0	6,175	19.0	7,209	31.1
		59,306	54.6	9,334	12.9	16,799	66.5	4,753	55.9	2,085	57.8	3,181	1.2
		33,216	12.0	23,698	21.0	2,384	117.5	1,432	59.8	26,264	22.3	11,211	362.1
		46,999	33.6	23,986	46.6	12,043	37.3	3,788	44.9	9,097	81.1	3,945	7.3
		3,436	12.5	1,025	24.2	178	3.4	112	28.5	5,286	58.4	4,254	1.1
		18,538	1.6	4,218	18.3	3,967	1.8	1,305	14.7	5,598	50.5	842	131.1
		8,419	16.6	2,614	36.3	1,927	12.2	1,300	30.9	602	12.0	896	81.1
		14,002	12.0	5,208	5.8	5,378	5.2	1,400	16.0	29	12.4	29	67.4
		63,526	14.5	15,206	19.6	14,729	13.7	11,601	34.1	12,870	24.3	8,412	35.5



25	12	235,508	21.7
	1	261,420	18.8
	2	196,246	13.3
	3	242,909	8.5
	4	228,897	6.4
	5	239,950	4.5
	6	231,979	4.1
	7	246,572	1.0
	8	216,633	1.7
	9	239,675	6.9
	10	239,248	7.0
	11	232,745	16.6
	12	250,896	6.5

	1 3	617,164	8.3
	4 6	667,521	9.2
	7 9	681,466	12.2
	10 12	738,215	24.5
	1 3	700,575	13.5
	4 6	700,826	5.0
	7 9	702,879	3.1
	10 12	722,889	2.1

	24 (2012)	2,381,805	6.9
	25 (2013)	2,704,366	13.5
	26 (2014)	2,827,168	4.5



--	--	--	--	--	--	--	--	--	--	--	--

--	--	--	--	--	--	--	--	--	--	--	--

25	12	235,508	42,030	16,353	29,999	15,720	32,963	8,883	1,387	1,364	103,162
26 2014	1	261,420	48,756	19,583	25,590	15,634	33,955	9,010	2,657	1,827	123,990
	2	196,246	36,071	15,931	18,766	12,615	25,788	9,366	1,384	980	91,277
	3	242,909	50,750	24,624	22,821	16,570	31,972	4,209	1,698	1,429	113,460
	4	228,897	40,538	17,753	31,429	14,110	27,035	6,818	1,295	1,181	106,492
	5	239,950	45,098	21,748	31,215	16,590	33,677	7,637	1,338	1,415	102,980
	6	231,979	45,866	20,809	28,582	19,667	22,897	5,465	1,129	1,777	106,597
	7	246,572	45,861	20,283	26,845	19,202	31,868	7,448	2,103	1,545	111,699
	8	216,633	41,158	21,397	23,944	15,019	29,449	5,334	1,733	1,157	98,840
	9	239,675	55,250	27,183	25,706	19,229	18,598	9,879	1,497	1,529	107,987
	10	239,248	49,979	24,355	24,390	16,717	28,901	6,874	1,530	1,359	109,498
	11	232,745	47,708	22,307	24,740	17,880	30,030	7,233	1,643	1,302	102,210
	12	250,896	51,033	25,193	27,906	18,795	35,268	4,665	1,367	1,375	110,488

25	12	21.7	28.1	42.6	37.8	45.5	33.4	10.0	24.5	25.0	10.8
26 2014	1	18.8	32.7	62.6	1.9	20.4	15.7	11.2	36.3	27.1	22.2
	2	13.3	22.1	30.4	22.5	26.0	23.2	51.1	2.2	9.8	14.3
	3	8.5	18.5	37.3	19.0	9.5	2.2	38.4	36.6	28.1	18.4
	4	6.4	12.8	23.4	7.0	25.6	5.3	38.2	1.2	28.5	7.7
	5	4.5	3.4	7.0	4.6	4.8	39.0	15.0	5.2	19.0	1.7
	6	4.1	0.7	5.0	15.1	4.5	23.3	24.9	14.8	15.2	16.1
	7	1.0	4.1	5.9	6.2	32.6	13.0	24.1	2.1	12.0	2.7
	8	1.7	1.1	20.9	16.7	21.8	7.3	24.3	7.0	29.4	2.7
	9	6.9	39.3	68.6	18.9	47.0	34.0	5.6	1.1	0.1	0.2
	10	7.0	25.4	64.6	11.3	17.1	6.5	17.1	12.7	18.6	0.7
	11	16.6	18.0	36.6	6.3	16.2	11.2	5.7	0.7	4.9	37.3
	12	6.5	21.4	54.1	7.0	19.6	7.0	47.5	1.4	0.8	7.1

24 (2012)		2,381,805	438,151	161,769	283,556	151,995	271,184	107,980	15,881	12,584	1,100,473
25 (2013)		2,704,366	484,675	199,587	308,035	171,063	333,659	101,800	18,651	17,904	1,268,579
26 (2014)		2,827,168	558,068	261,166	311,934	202,029	349,437	83,935	19,371	16,874	1,285,519

24 (2012)		6.9	16.3	26.7	2.5	12.2	42.7	13.5	5.7	11.7	0.5
25 (2013)		13.5	10.6	23.4	8.6	12.5	23.0	5.7	17.4	42.3	15.3
26 (2014)		4.5	15.1	30.9	1.3	18.1	4.7	17.5	3.9	5.8	1.3

--	--	--	--	--	--	--	--	--	--	--	--	--	--

--	--	--	--	--	--	--	--	--	--	--	--	--	--

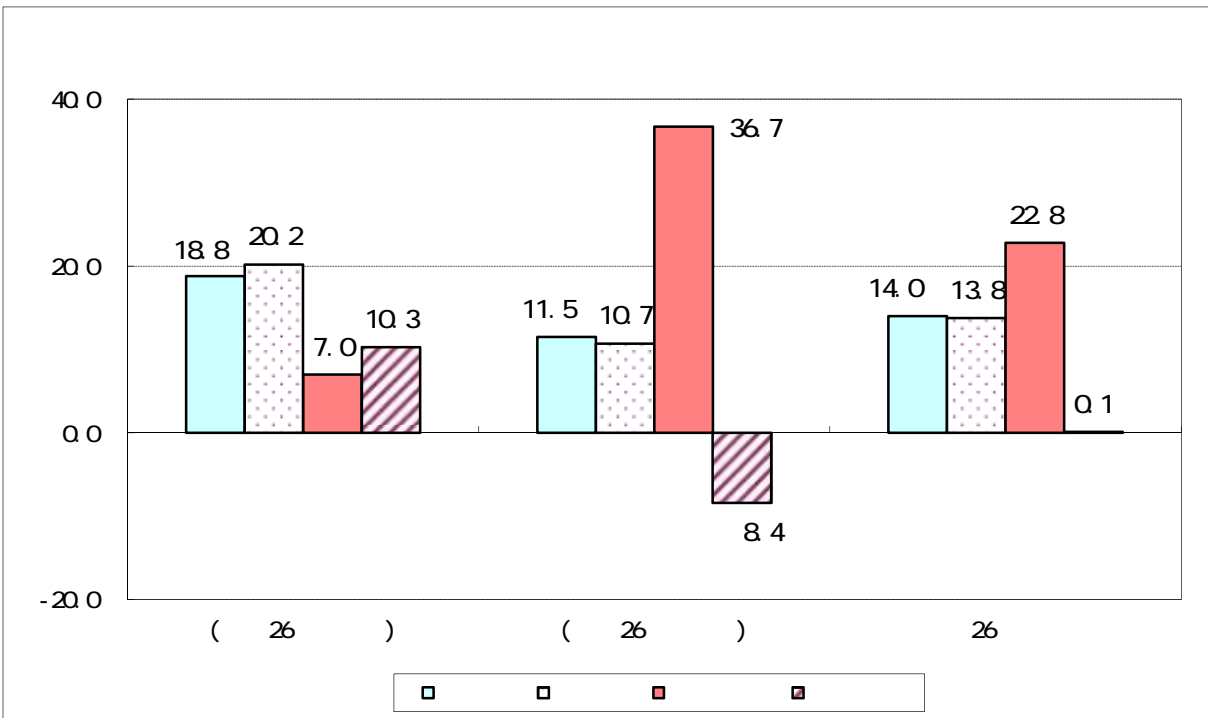
25	12	168,489	28.5	78,194	41.5	22,718	10.1	12,059	22.5	12,151	2.0	9,233	39.9
26 2014	1	186,416	27.4	92,997	50.2	25,793	13.7	12,903	4.5	14,661	4.1	22,412	92.8
	2	138,844	19.6	56,712	22.2	21,392	8.1	11,597	9.2	12,803	4.3	9,520	4.7
	3	174,917	20.0	86,735	31.7	24,959	23.2	13,710	18.0	13,150	12.3	11,579	28.2
	4	162,007	13.0	75,931	18.6	18,603	5.4	13,042	26.3	19,334	25.7	11,304	1.2
	5	157,123	0.0	76,478	7.3	20,550	1.3	15,785	26.5	18,784	1.7	12,661	16.3
	6	167,646	8.9	77,666	6.8	22,709	15.3	16,532	21.2	18,007	26.1	12,202	5.3
	7	174,480	2.6	80,487	6.1	25,570	2.6	16,639	5.6	18,297	16.8	12,559	28.6
	8	152,296	0.7	67,534	0.3	17,876	22.6	15,845	28.9	16,082	34.1	11,938	3.1
	9	180,835	16.2	88,761	27.0	19,974	0.8	16,639	42.3	17,244	25.2	12,971	21.7
	10	171,014	10.8	79,201	10.8	20,678	2.1	19,004	42.3	14,611	4.0	13,411	15.3
	11	170,979	13.1	79,243	11.5	18,281	12.5	16,983	37.9	15,959	70.7	10,769	32.9
12	188,360	11.8	84,272	7.8	20,718	8.8	19,114	58.5	13,172	8.4	17,711	91.8	

24 (2012)		1,644,543	5.5	687,705	4.8	251,882	19.2	163,267	14.8	162,696	6.7	130,613	22.6
25 (2013)		1,813,603	10.3	815,980	18.7	256,235	1.7	148,508	9.0	214,443	31.8	153,410	17.5
26 (2014)		2,024,916	11.7	946,017	15.9	257,103	0.3	187,795	26.5	192,104	10.4	159,037	3.7

26 2014 11													
		170,979	13.1	79,243	11.5	18,281	12.5	16,983	37.9	15,959	70.7	10,769	32.9
		45,416	20.4	21,919	13.2	4,202	14.0	9,364	113.8	339	37.1	1,863	5.8
		22,145	45.3	9,718	41.3	1,714	35.0	8,681	122.6	36	33.8	126	85.0
		12,091	5.2	5,220	4.8	829	26.9	118	26.0	5,104	23.3	1,815	7.6
		14,329	15.3	9,979	18.0	1,443	1.0	315	32.2	1,296	27.8	2,168	16.2
		13,955	92.1	0	-	0	-	0	-	0	-	0	-
		2,488	126.1	0	-	0	-	0	-	2,012	122.2	0	-
		1,607	2.1	1,388	2.0	9	23.1	7	2.7	2	60.9	26	342.7
		473	9.7	247	22.9	5	11.3	51	199.7	599	3.9	135	31.1
		80,621	2.0	40,490	10.6	11,792	12.1	7,129	3.0	6,608	86.0	4,762	53.9

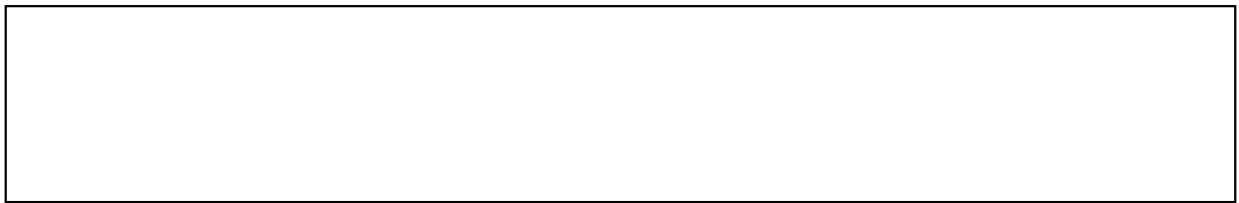
26 2014 12													
		188,360	11.8	84,272	7.8	20,718	8.8	19,114	58.5	13,172	8.4	17,711	91.8
		47,754	19.7	22,492	7.3	4,218	2.2	10,057	155.1	1,304	303.1	1,805	23.8
		24,835	58.3	10,773	31.6	2,233	1.2	9,142	175.7	315	380.9	43	87.8
		15,976	7.2	6,704	7.2	935	7.1	238	11.3	4,635	3.6	2,086	27.0
		14,791	9.1	10,475	8.8	1,272	2.4	330	51.6	1,195	30.2	2,685	148.3
		17,865	134.5	0	-	0	-	0	-	0	-	5,320	
		1,060	62.9	501	70.8	0	-	2		0	-	0	-
		1,354	1.0	1,260	0.7	20	52.6	8	156.7	2	30.5	6	39.5
		490	3.0	294	7.5	3	62.1	2	84.4	634	6.0	151	19.2
		89,070	4.2	42,547	7.8	14,270	11.2	8,478	17.6	5,401	1.8	5,658	15.1

( 26 )	18.8	16.1	19.4	20.2	7.0	10.3
( 26 )	11.5	36.1	6.4	10.7	36.7	8.4
26	14.0	28.7	10.7	13.8	22.8	0.1



10                      678                      10                      1                      368  
                                  152                      168                      142  
                                  141                      99.3                      526                      92.9                      306                      83.2  
                                  156                      156                      156                      156

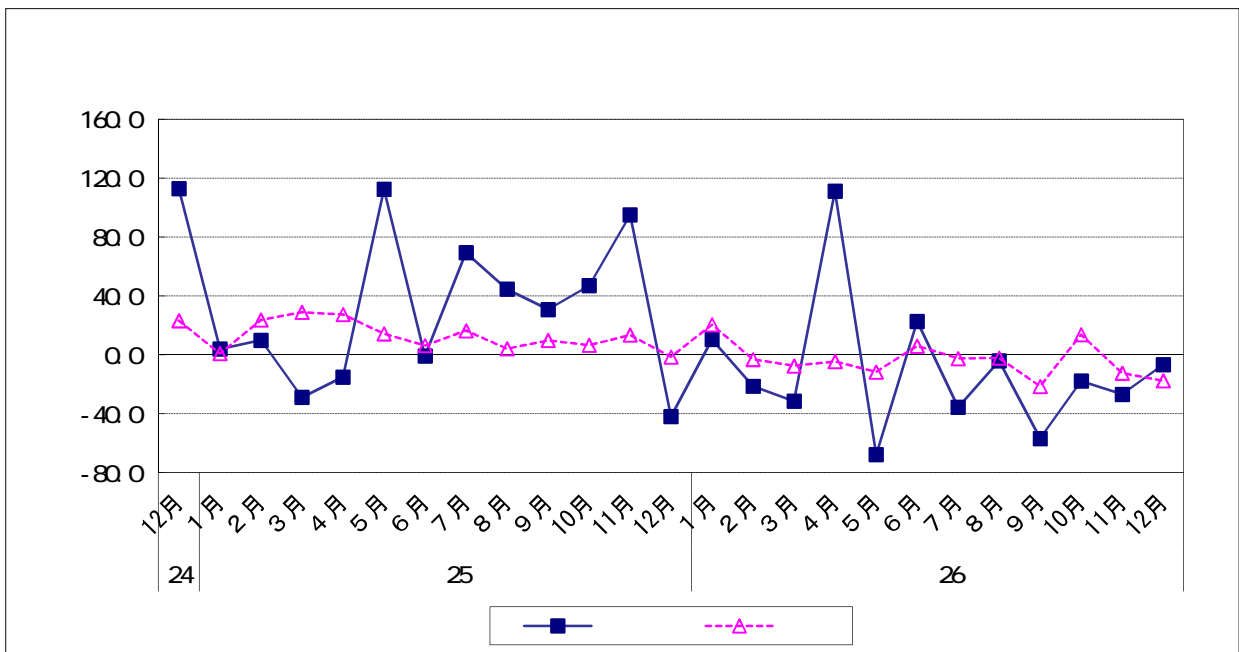




	12	167,967	41.9	41,974	0.3
(2014)		142,016	10.5	21,155	15.3
		105,243	21.3	15,054	24.7
		121,313	31.4	27,221	13.4
		285,925	111.1	54,223	126.5
		87,154	67.7	12,481	56.5
		168,706	22.7	31,864	60.7
		151,615	35.6	24,782	28.5
		207,349	4.1	33,841	8.7
		131,691	56.8	28,481	44.5
		177,606	17.8	29,136	6.3
	10	200,404	26.8	38,649	23.5
	12	156,761	6.7	25,216	39.9

		439,095	11.1	69,806	0.6
(2013)		543,095	27.7	72,460	28.5
		756,367	45.0	117,115	70.5
	10 12	657,724	14.1	123,572	47.5
(2014)		368,572	16.1	63,431	9.1
		541,785	0.2	98,568	36.0
		490,655	35.1	87,104	25.6
	10 12	534,771	18.7	93,001	24.7

(2012)	2,017,010	7.1	279,122	10.1
(2013)	2,396,281	18.8	382,952	37.2
(2014)	1,935,783	19.2	342,104	10.7



\_\_\_\_\_

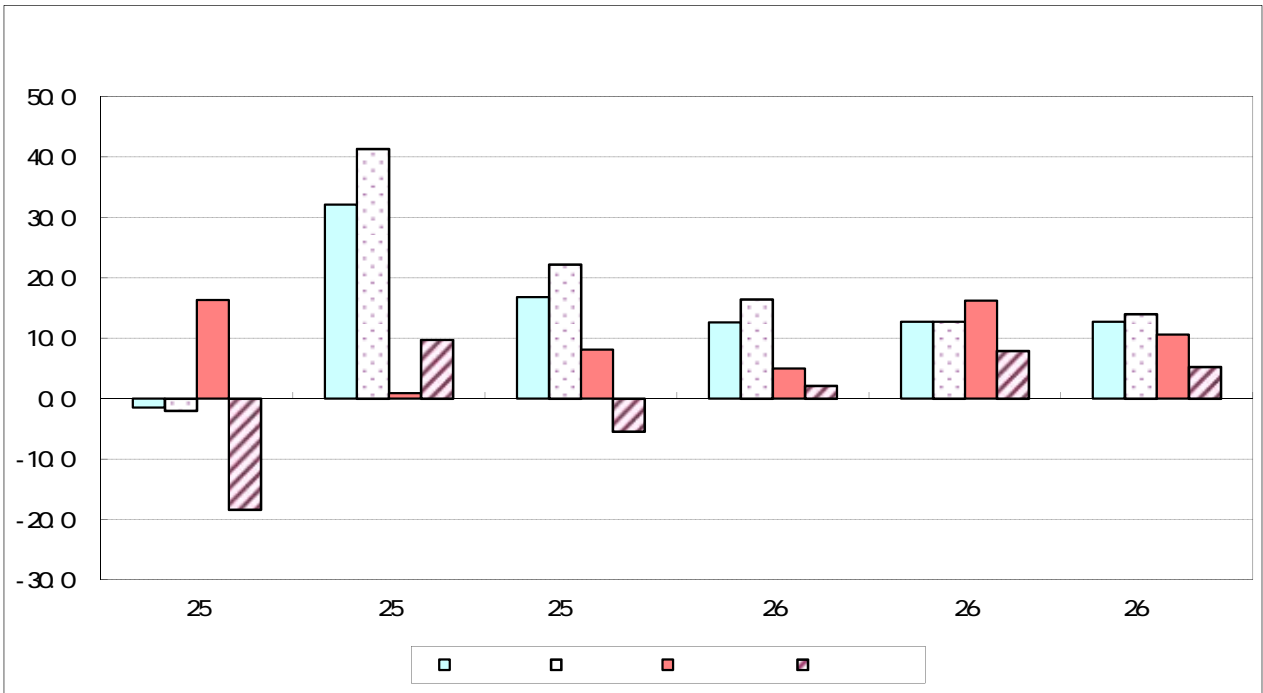
)( )

12.7

( 25 )	1.5	13.2	4.5	2.0	16.3	18.4
( 25 )	32.1	2.5	45.1	41.3	0.9	9.7
25	16.8	5.0	27.0	22.2	8.1	5.5
( 26 )	12.6	8.4	14.4	16.4	5.0	2.1
( 26 )	12.7	36.1	5.4	12.7	16.2	7.9
26	12.7	23.9	8.7	14.0	10.6	5.2

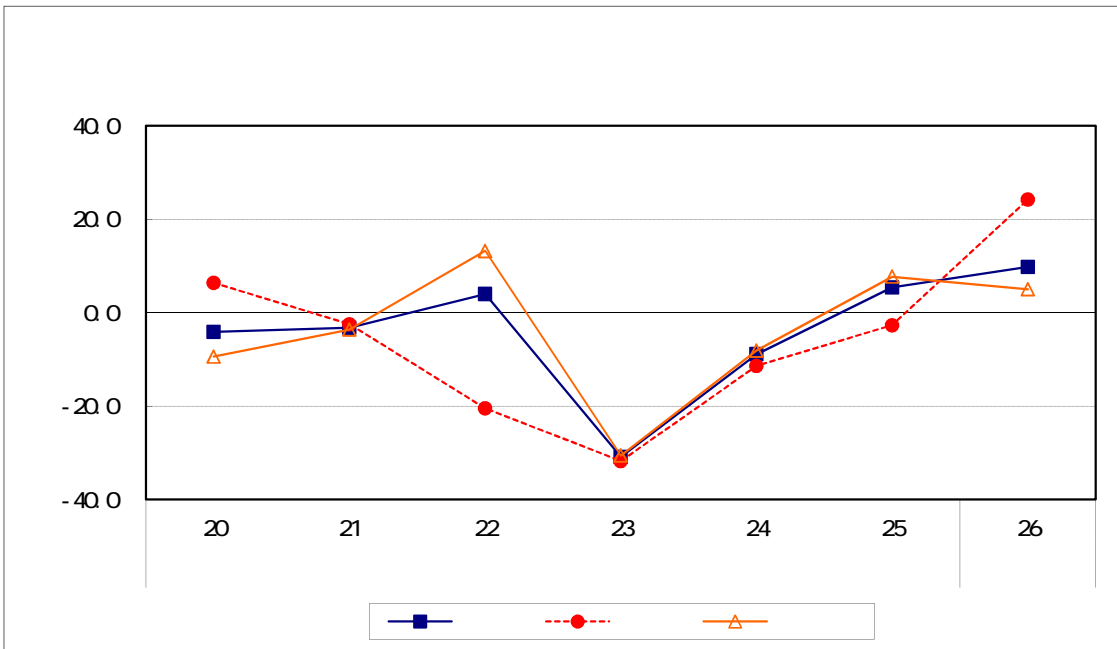
- 1) 11 12 12 12
- 2) 1,076

365	365	100.0%
711	709	99.7%
1076	1074	99.8%



9.8

	20	21	22	23	24	25	26
	4.1	3.2	4.0	30.9	8.9	5.4	9.8
	6.4	2.5	20.5	31.8	11.4	2.7	24.2
	9.4	3.6	13.2	30.6	8.1	7.7	5.0

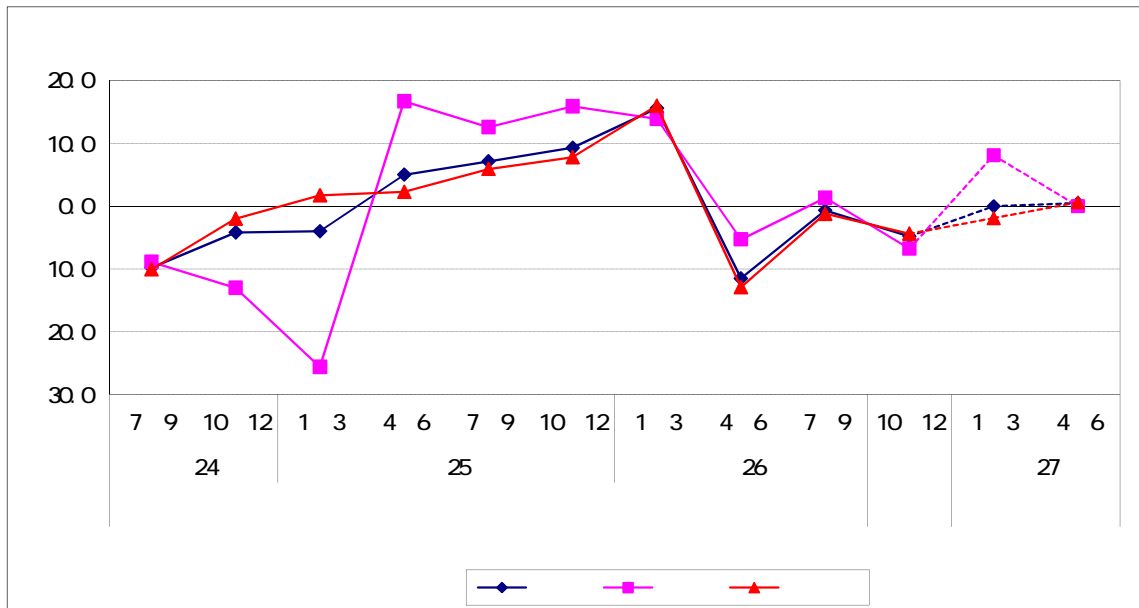


	20	21	22	23	24	25	26
	11.4	24.7	4.8	20.0	15.6	19.6	8.7
	10.3	42.6	9.8	20.5	20.3	4.9	26.3
	12.2	5.3	14.7	19.7	13.0	31.8	2.4

26 6 26

522 979


			9.8	8.9	10.1	9.4	0.7	7.5	14.6
	10 12		4.2	13.0	2.0	6.6	4.9	13.4	3.8
			4.0	25.6	1.7	3.2	2.8	6.3	4.5
			5.0	16.7	2.3	2.7	1.4	7.7	0.7
			7.1	12.6	5.9	4.0	7.9	16.6	4.3
	10 12		9.3	15.9	7.8	9.2	12.1	4.5	10.3
			15.6	13.9	16.0	14.6	15.6	16.7	13.2
			11.5	5.3	12.9	15.8	9.8	13.7	19.6
			0.7	1.3	1.2	0.5	4.9	3.1	2.9
	10 12		4.8	6.8	4.4	1.5	0.7	4.5	1.0
			0.0	8.1	1.9	1.2	3.5	6.4	0.7
			0.5	0.0	0.6	0.7	2.1	2.6	1.6



1

10                      10                      142                      368

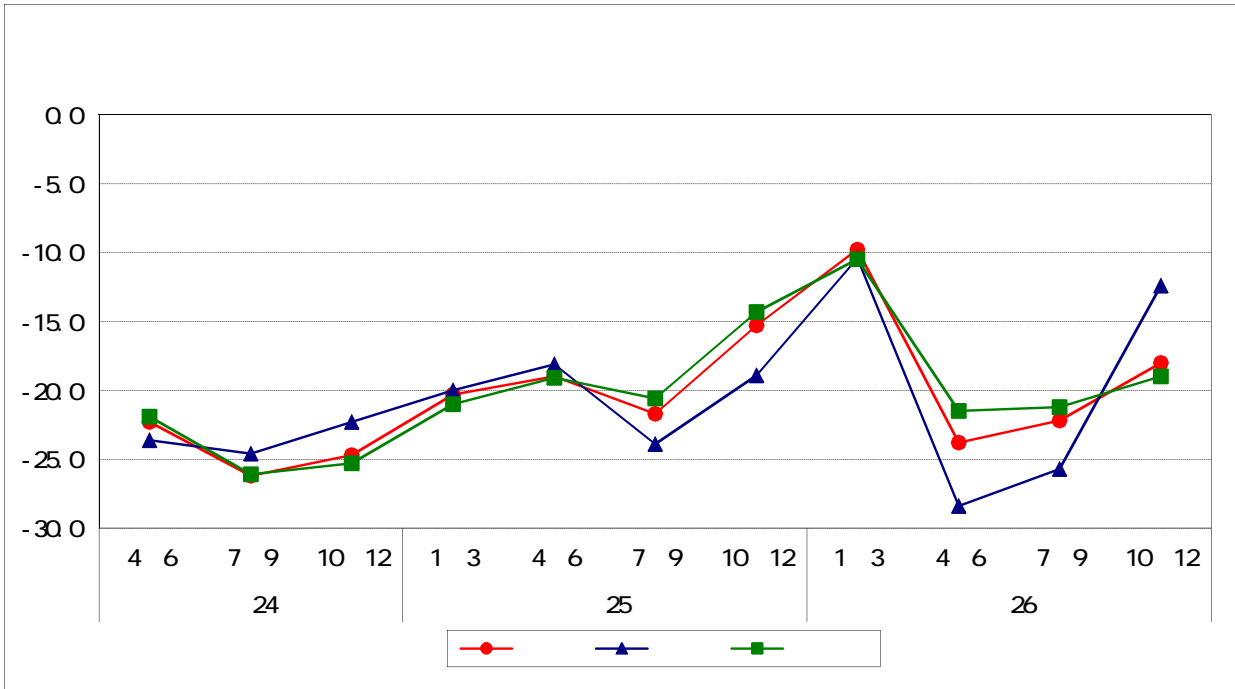
10                      678                      168                      526                      156                      92.9                      306                      83.2

152                      99.3                      394                      74                      320

603



			22.3	23.6	21.9
			26.2	24.6	26.1
	10 12		24.7	22.3	25.3
			20.3	20.0	21.0
			19.0	18.1	19.1
			21.7	23.9	20.6
	10 12		15.3	18.9	14.3
			9.8	10.4	10.5
			23.8	28.4	21.5
			22.2	25.7	21.2
	10 12		18.0	12.4	19.0



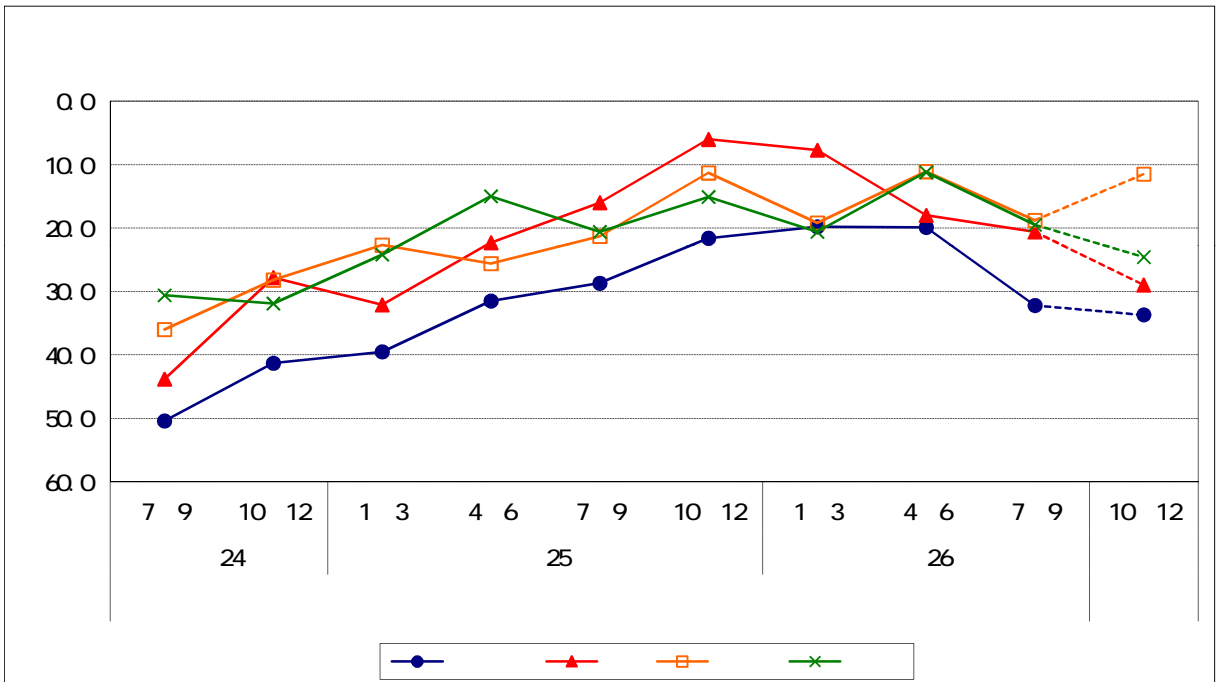
138

2014 10-12

26 11 15  
26 10-12

( )

2012		50.4	43.8	36.0	30.6
	10 12	41.3	27.8	28.2	31.9
(2013)		39.5	32.1	22.7	24.2
		31.5	22.3	25.6	15.0
		28.7	16.0	21.3	20.6
	10 12	21.6	6.0	11.3	15.1
(2014)		19.8	7.7	19.2	20.6
		19.9	18.0	11.1	11.2
		32.2	20.6	18.8	19.5
	10 12	33.7	29.0	11.5	24.6



26 9

379

245      64 6

20      19      10      19      10      66

10      36      20      60      20      35

20      10

--	--	--	--	--	--

--	--	--	--	--	--

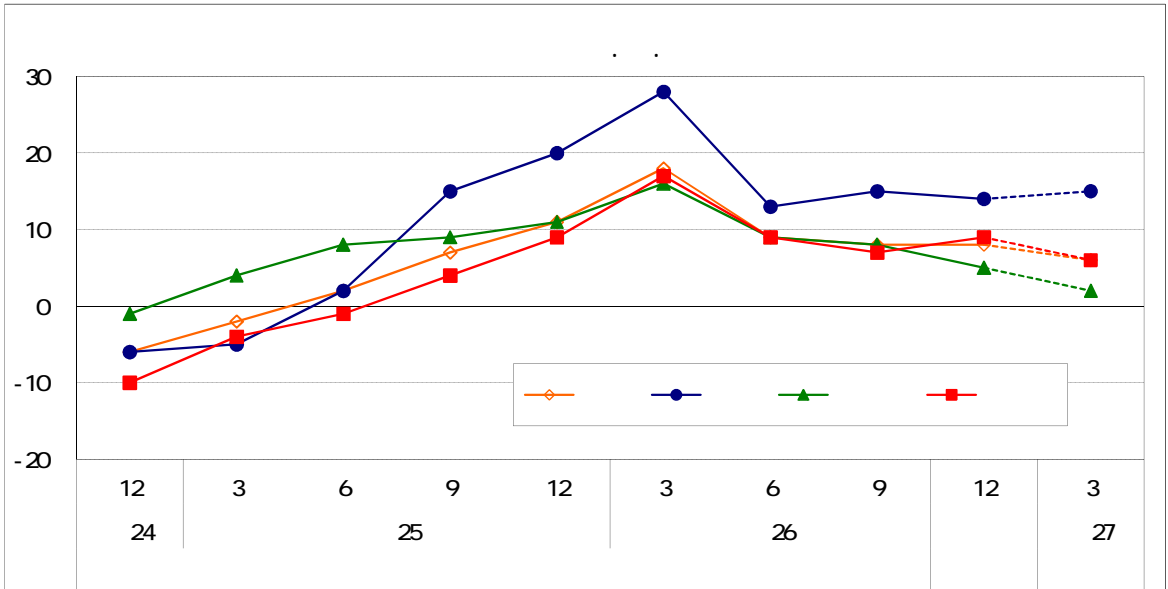
24	10	12		4	3.4	0.6
25 2013				2	5.3	2.6
				5	0.0	6.9
	10	12		9	0.9	2.6
26 (2014)				1	12.0	7.3
				6	11.0	7.6
				1	10.8	4.5
27 (2015)	10			3	6.2	0.6
				4	6.7	4.8
				3	8.1	0.9
				3	3.4	3.1

--	--	--	--	--	--	--


			2	12	3	5	4	4
			2	2	4	2	8	1
			7	0	11	15	9	4
			11	7	12	20	11	9
			18	11	22	28	16	17
			9	11	9	13	9	9
			8	10	8	15	8	7
			8	9	8	14	5	9
			6	3	8	15	2	6

注) 1)回答期間:11月12日～12月12日  
 2)対象企業:九州・沖縄の企業 1,076社

	対象	回答	回答率
製造業	365	365	100.0%
非製造業	711	709	99.7%
全産業	1,076	1,074	99.8%





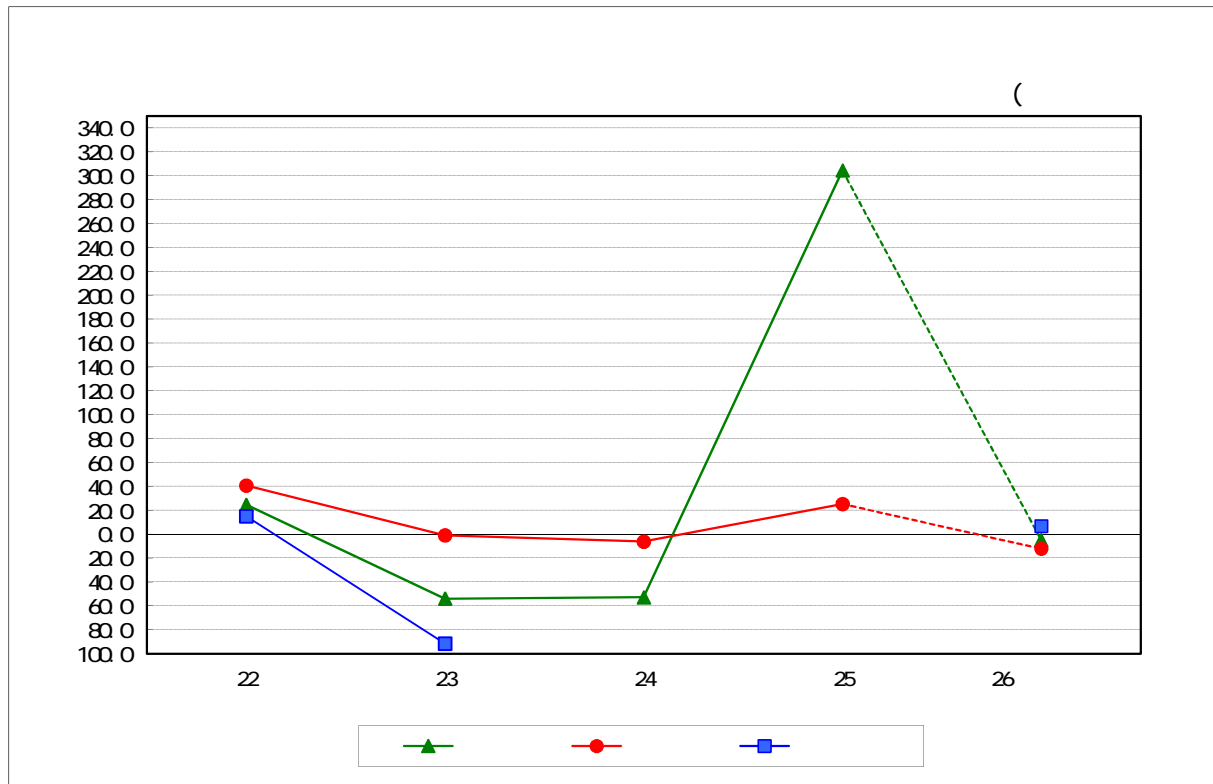
( )

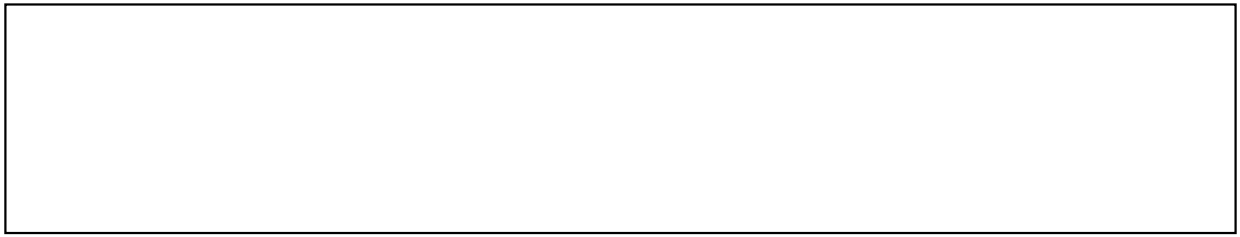
( )

22 (2010)	24.6	40.7	15.0
23 (2011)	53.9	0.9	91.6
24 (2012)	52.8	6.2	
( )	1.9	-	1.9
25 (2013)	304.5	25.3	
( )	21.1	-	17.8
26 (2014)	5.0	12.3	6.6
( )	10.2	-	8.4

注) 1)回答期間:11月12日~12月12日  
 2)対象企業:九州・沖縄の企業 1,076社

	対象	回答	回答率
製造業	365	365	100.0%
非製造業	711	709	99.7%
全産業	1,076	1,074	99.8%



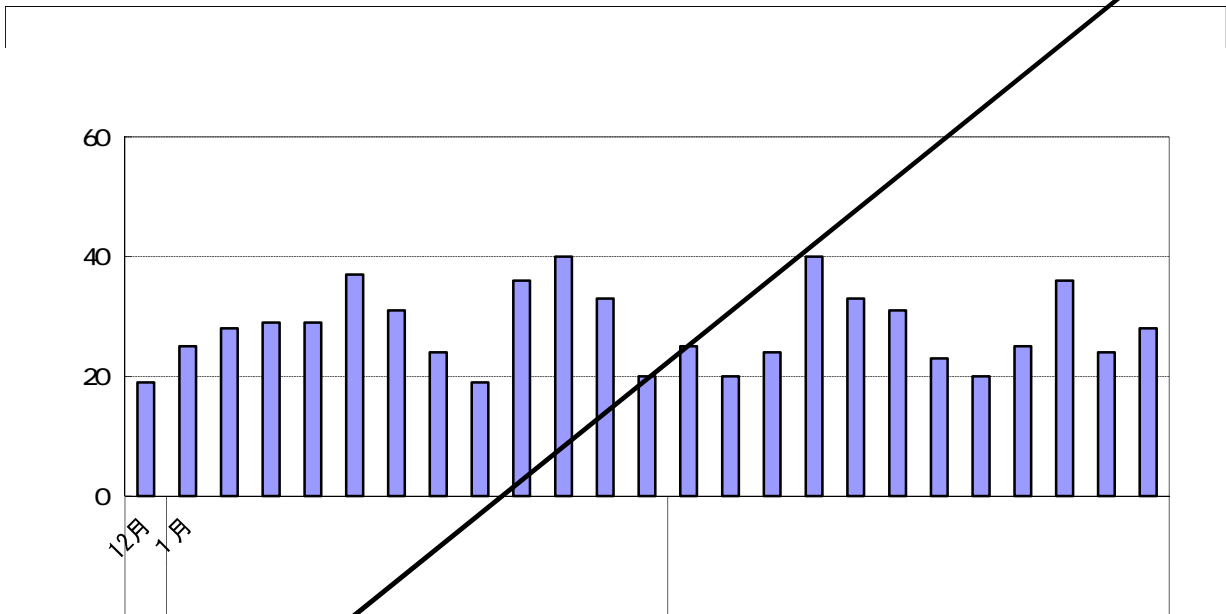


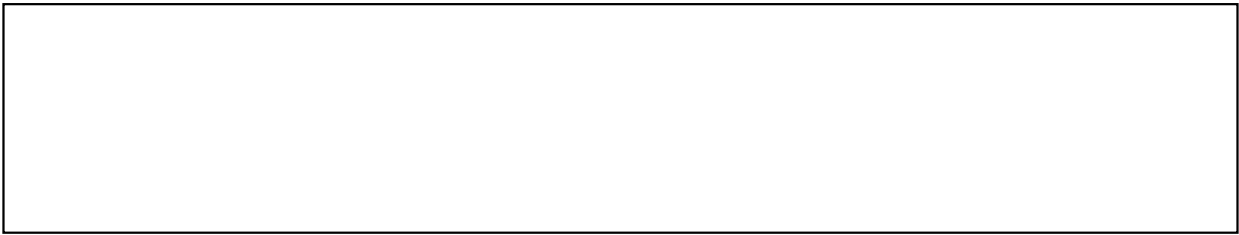
(2014)	12	20	5.3	1
		25	0.0	0
		20	28.6	8
		24	17.2	5
		40	37.9	11
		33	10.8	4
		31	0.0	0
		23	4.2	1
		20	5.3	1
		25	30.6	11
	10	36	10.0	4
	11	24	27.3	9
12	28	40.0	8	

(2013)		82	18.8	19
		97	9.0	8
		79	20.2	20
	10 12	93	1.1	1
2014		69	15.9	13
		104	7.2	7
		68	13.9	11
	10 12	88	5.4	5

(2012)	381	2.3	9	
(2013)	351	7.9	30	
(2014)	329	6.3	22	

1,000



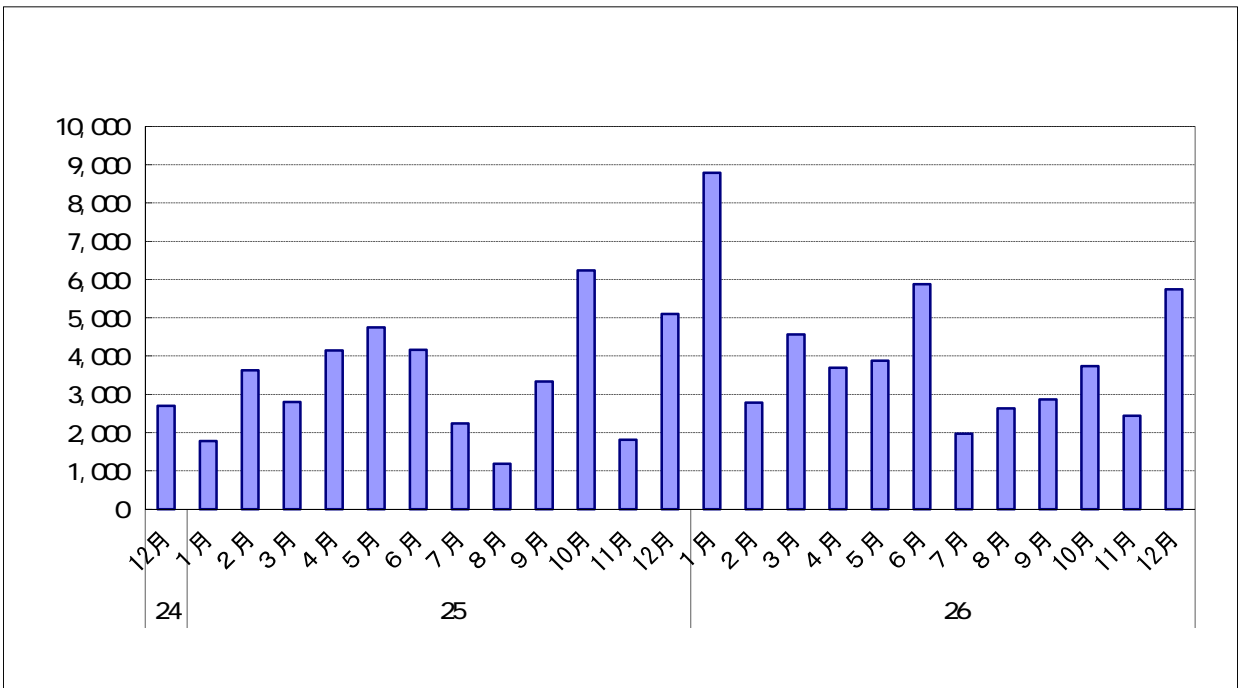


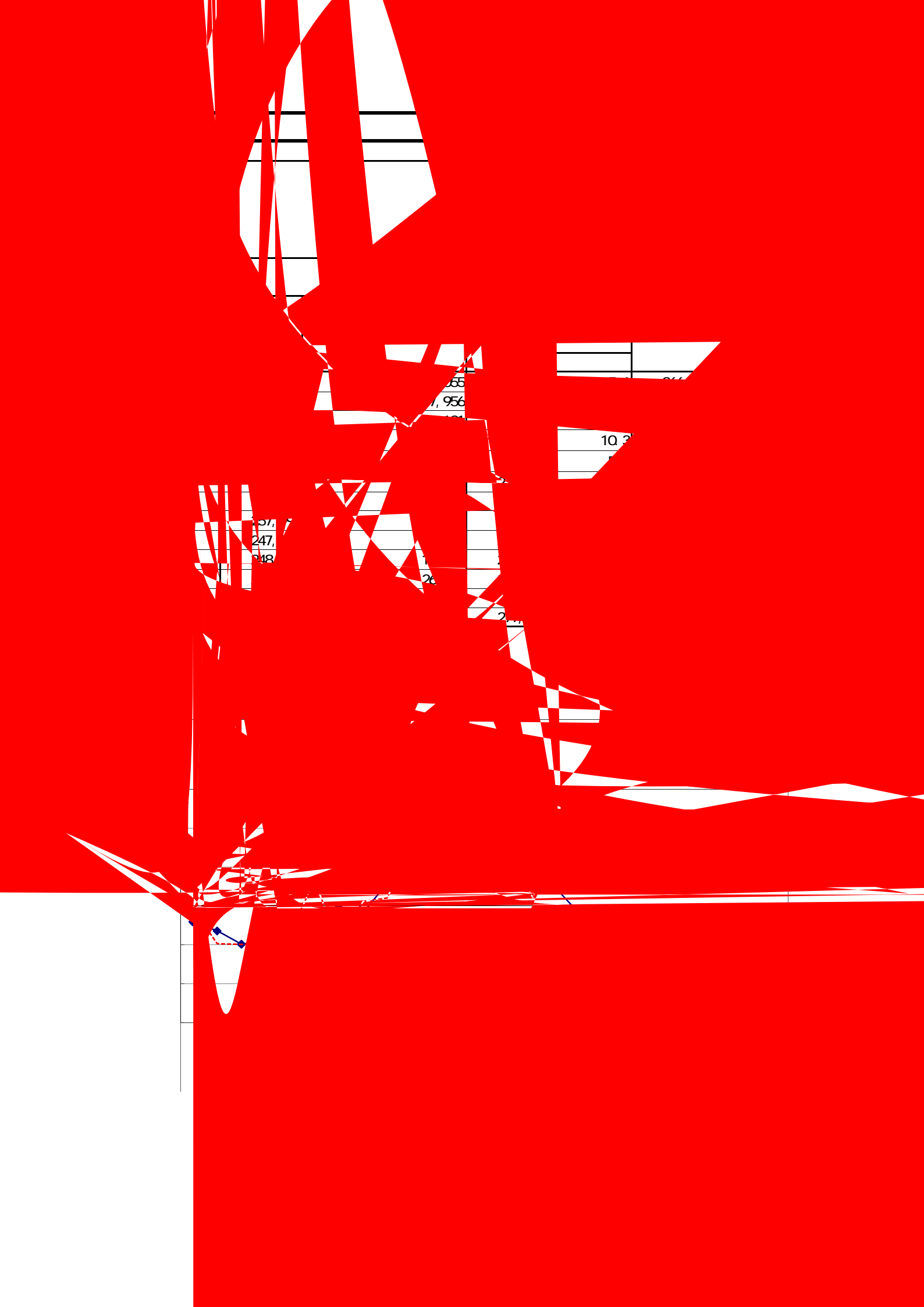
	12	5,096	88.9
(2014)		8,784	392.9
		2,781	23.3
		4,566	63.4
		3,692	11.0
		3,875	18.3
		5,880	41.4
		1,970	12.0
		2,628	121.6
		2,870	14.0
	10	3,735	40.1
	11	2,440	34.5
	12	5,747	12.8

(2013)		8,203	54.3
		13,053	62.3
		6,762	39.8
	10 12	13,148	31.4
2014		16,131	96.6
		13,447	3.0
		7,468	10.4
	10 12	11,922	9.3

	(2012)	82,950	14.6
	(2013)	41,166	50.4
	(2014)	48,968	19.0

1,000





10.3	247	248	249	250	251	252	253	254	255	256	257	258	259	260	261	262	263	264	265	266	267	268	269	270	271	272	273	274	275	276	277	278	279	280	281	282	283	284	285	286	287	288	289	290	291	292	293	294	295	296	297	298	299	300
10.3	247	248	249	250	251	252	253	254	255	256	257	258	259	260	261	262	263	264	265	266	267	268	269	270	271	272	273	274	275	276	277	278	279	280	281	282	283	284	285	286	287	288	289	290	291	292	293	294	295	296	297	298	299	300
10.3	247	248	249	250	251	252	253	254	255	256	257	258	259	260	261	262	263	264	265	266	267	268	269	270	271	272	273	274	275	276	277	278	279	280	281	282	283	284	285	286	287	288	289	290	291	292	293	294	295	296	297	298	299	300
10.3	247	248	249	250	251	252	253	254	255	256	257	258	259	260	261	262	263	264	265	266	267	268	269	270	271	272	273	274	275	276	277	278	279	280	281	282	283	284	285	286	287	288	289	290	291	292	293	294	295	296	297	298	299	300

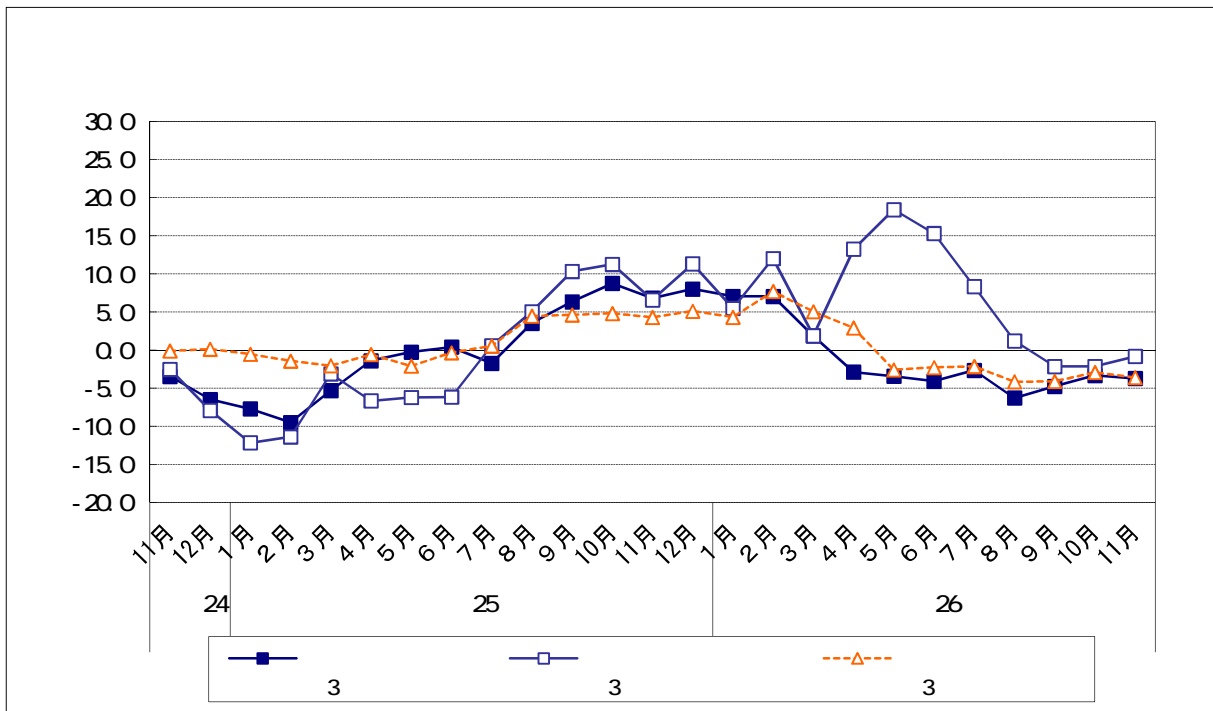


	12	101,041	8.0	14,134	11.3	169,336	5.1
(2014)		90,204	7.0	15,184	5.5	133,204	4.3
		86,766	7.1	11,852	12.0	117,665	7.7
		96,996	1.9	15,461	1.9	152,175	5.0
		94,274	2.9	15,584	13.3	114,321	2.9
		89,477	3.4	17,268	18.4	119,559	2.6
		88,907	4.1	15,710	15.3	118,357	2.3
		86,830	2.7	14,083	8.3	126,795	2.1
		84,673	6.3	15,595	1.2	126,870	4.1
		90,658	4.8	15,329	2.2	117,561	4.1
	10	93,050	3.3	14,112	2.2	123,477	2.9
	11	89,281	3.7	14,511	0.8	125,201	3.6
	12	94,797		16,083		157,889	

:

a-b

.....



1. The first part of the document is a list of names and titles.

2. The second part of the document is a list of names and titles.

3.

4.

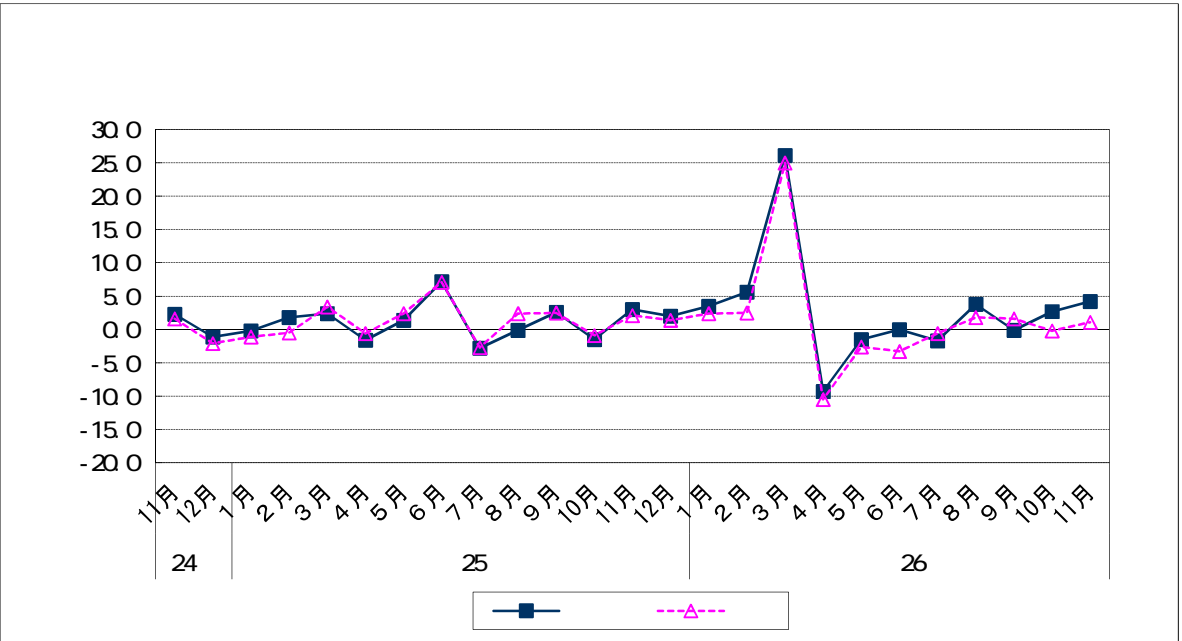
( )

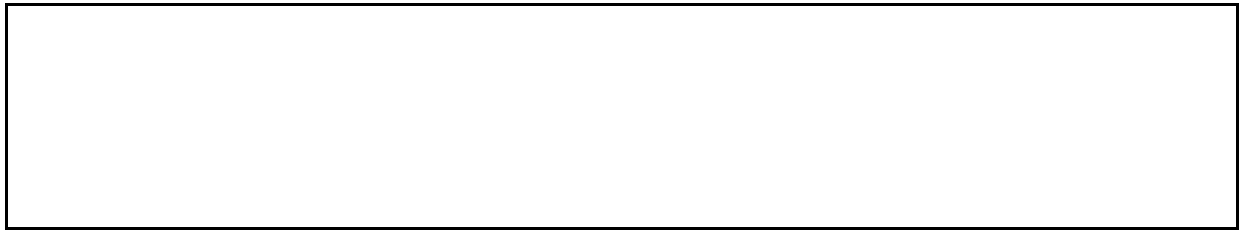
		( )		
(2013)	11	27,067	3.0	3.0
	12	35,948	2.0	2.0
(2014)		28,184	3.5	3.5
		22,379	5.6	5.6
		32,741	26.1	26.1
		20,333	9.3	9.3
		23,055	1.5	1.5
		23,616	0.0	0.0
		27,690	1.7	1.7
		22,668	3.8	3.8
		21,858	0.1	0.1
	10	24,086	2.7	2.7
11	28,203	4.2	4.2	

	10 12	85,337	0.5
(2013)		74,398	1.3
		69,452	2.3
		71,872	0.4
2014	10 12	86,464	1.3
		83,304	12.0
		67,004	3.5
		72,216	0.5

		( )	
	(2011)	297,442	6.8
	(2012)	298,844	0.5
	(2013)	302,186	1.1

24



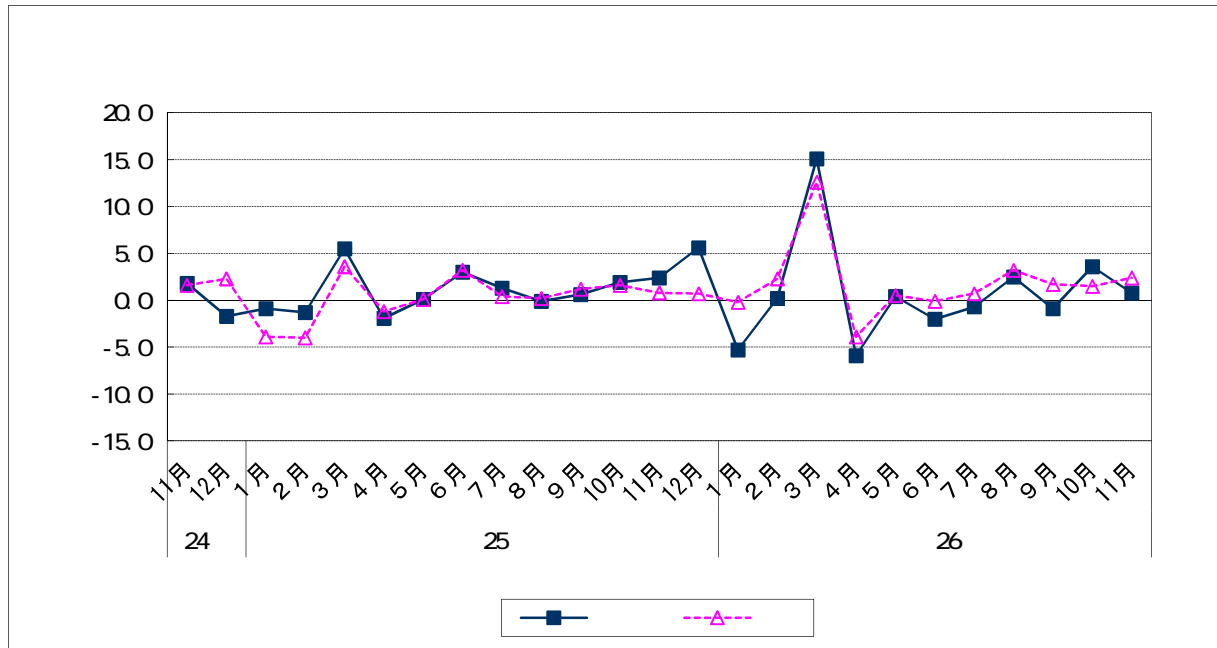


(2013)	11	32,592	2.4	0.7
	12	42,729	5.6	3.4
(2014)		31,988	5.3	7.3
		28,892	0.2	1.8
		37,206	15.1	13.4
		29,255	5.9	7.0
		32,129	0.4	0.1
		31,821	2.0	2.2
		34,294	0.7	1.2
		34,582	2.5	1.8
		30,344	0.9	1.5
		10	33,064	3.6
	11	32,847	0.8	0.8

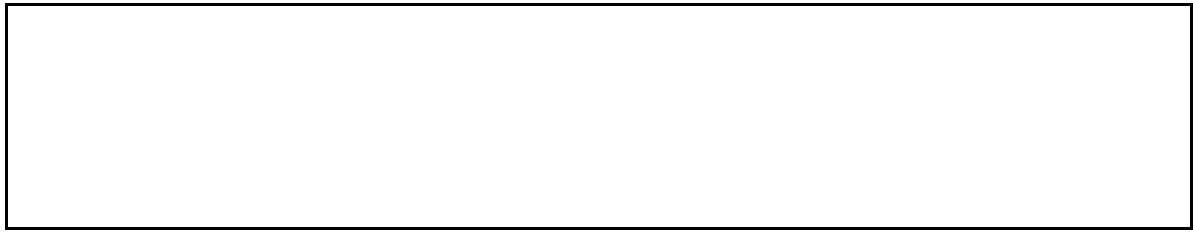
	10 12	103,600	0.6
(2013)		94,920	1.1
		95,539	0.4
		98,881	0.6
	10 12	107,223	3.5
2014		98,086	3.3
		93,205	2.5
		99,220	0.3

	(2011)	391,891	4.7
	(2012)	390,968	0.2
	(2013)	396,563	1.4

24







			( )	( )
(2013)	11	73,133	6.1	1.9
	12	80,183	5.3	0.5
(2014)		73,214	5.8	1.1
		67,607	5.6	0.7
		77,571	5.7	2.8
		71,588	2.4	0.2
		77,955	4.4	1.4
		75,196	2.7	0.5
		83,614	2.9	0.6
		82,846	1.3	2.6
		77,366	4.3	0.2
	10	79,146	6.1	0.8
	11	77,268	5.7	1.0

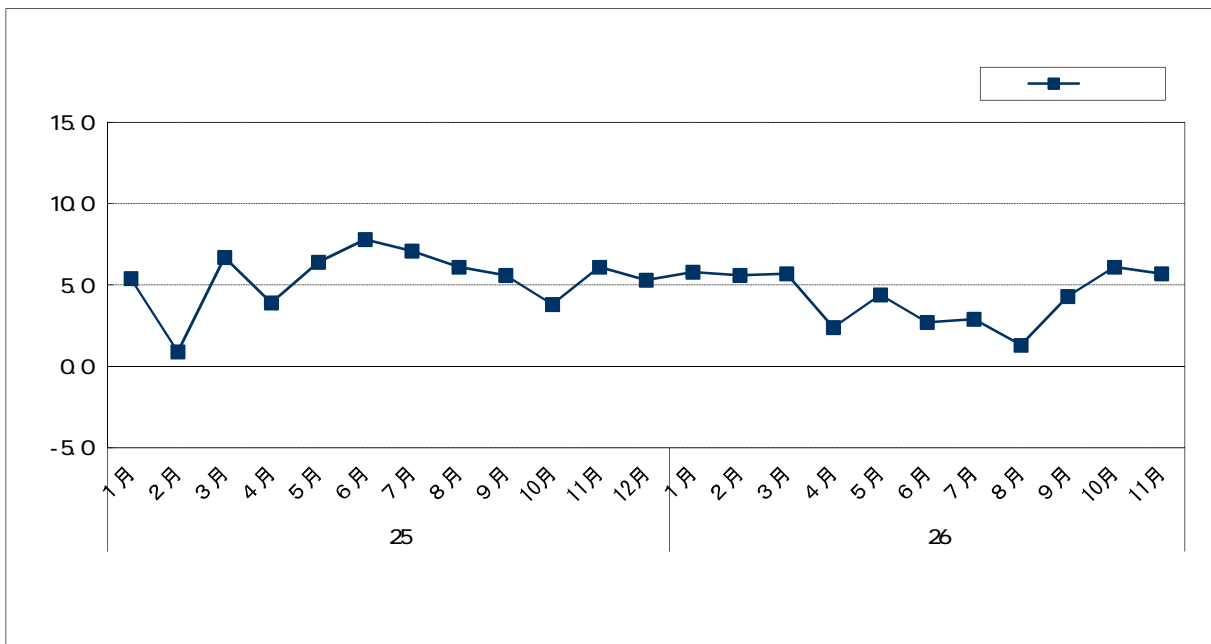
		( )
(2013)		206,603
		217,827
		237,267
	10 12	227,880
2014		218,392
		224,739
		243,826

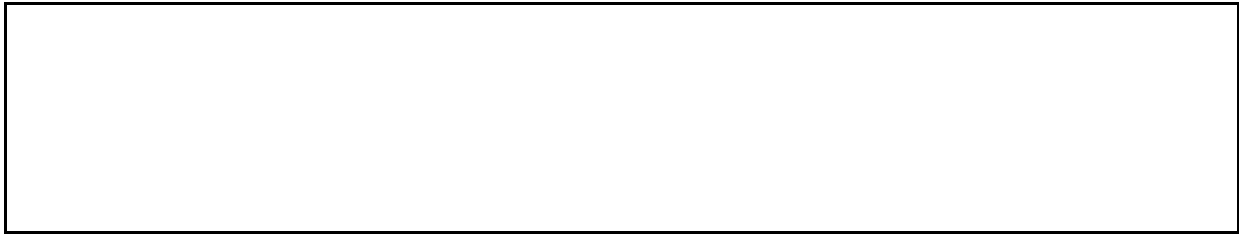
	( )
(2013)	889,577

19

25 1  
25 1

39 1

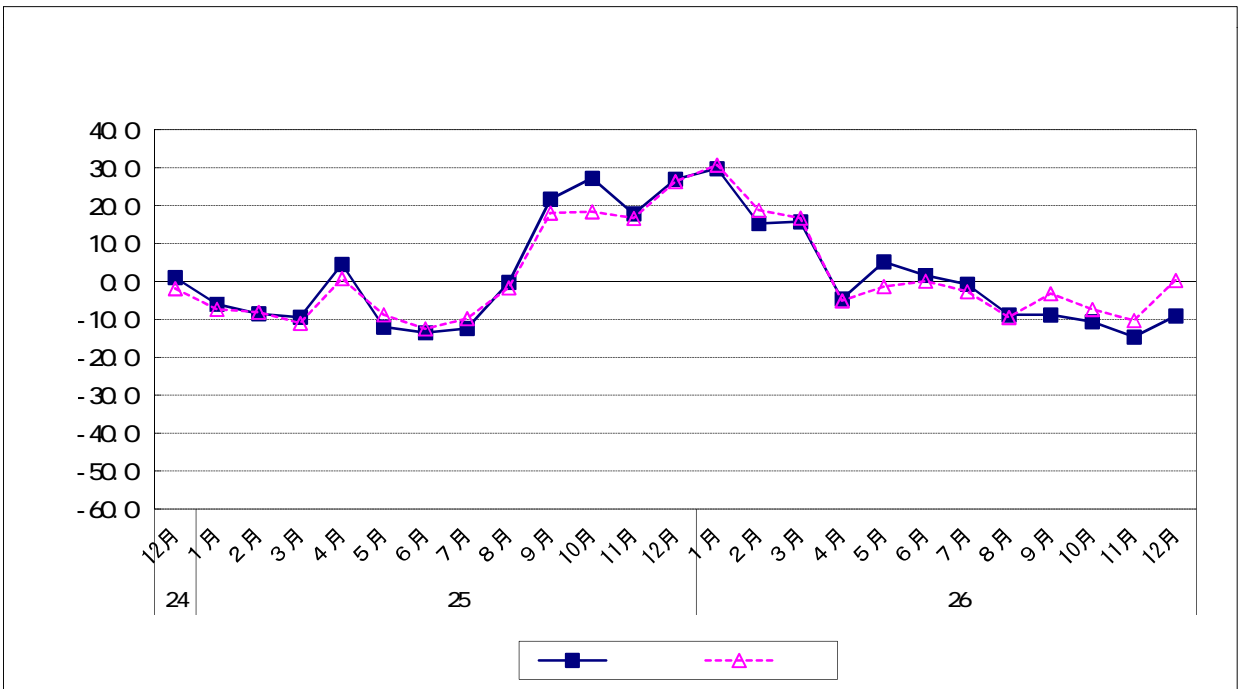


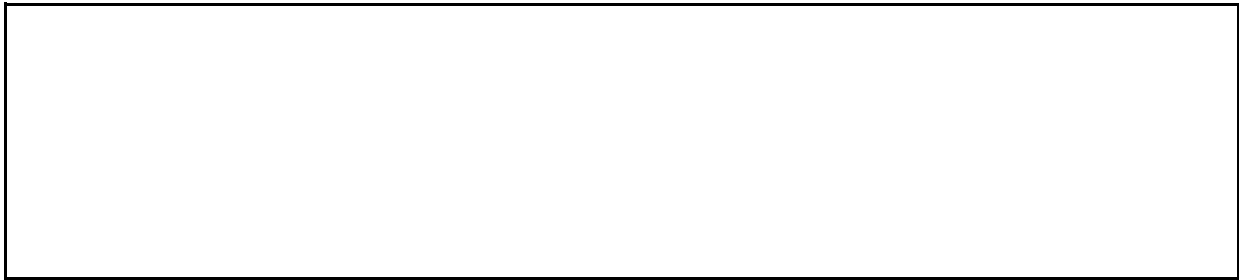


	12	14,362	27.0
(2014)		17,602	29.8
		19,862	15.3
		25,513	15.8
		11,657	4.6
		12,243	5.2
		14,638	1.6
		15,584	0.7
		11,524	8.8
		16,740	8.8
		10	12,859
	11	12,901	14.6
	12	13,057	9.1

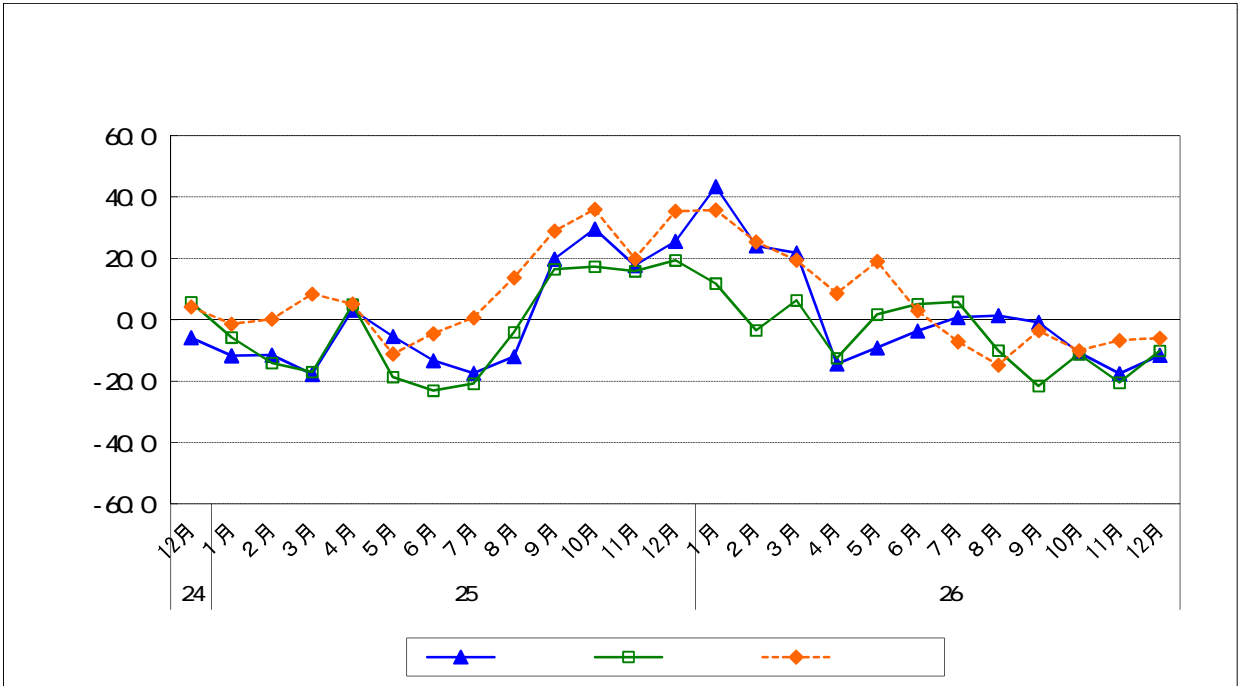
	10 12	35,447	1.8
(2013)		52,824	8.3
		38,266	8.0
		46,693	2.3
	10 12	43,864	23.7
(2014)		62,977	19.2
		38,538	0.7
		43,848	6.1
	10 12	38,817	11.5

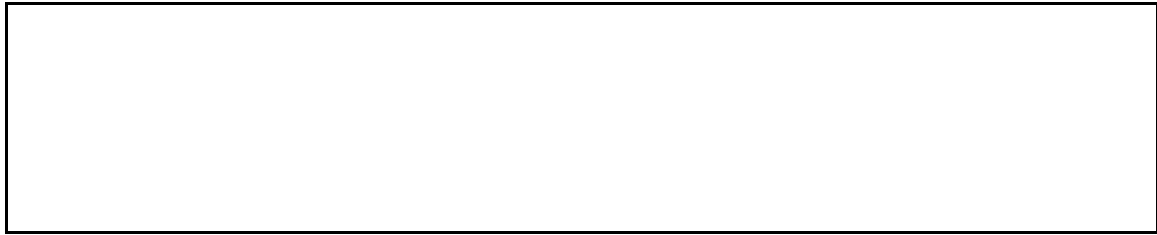
	(2012)	180,279	29.8
	(2013)	181,647	0.8
	(2014)	184,180	1.4





	12	4,767	25.6	4,313	19.3	5,282	35.4
(2014)		5,497	43.4	5,146	11.8	6,959	35.8
		6,466	24.1	5,579	3.5	7,817	25.4
		8,013	21.8	7,803	6.3	9,697	19.4
		3,025	14.4	3,326	12.5	5,306	8.6
		3,232	9.1	3,582	1.7	5,429	19.0
		4,167	3.7	4,605	5.1	5,866	2.9
		4,493	0.8	5,304	5.9	5,787	7.1
		3,518	1.4	3,652	10.0	4,354	14.8
		5,515	0.8	4,863	21.6	6,362	3.5
	10	3,883	10.6	4,317	11.2	4,659	10.1
	11	3,772	17.6	4,041	20.5	5,088	6.7
	12	4,215	11.6	3,876	10.1	4,966	6.0





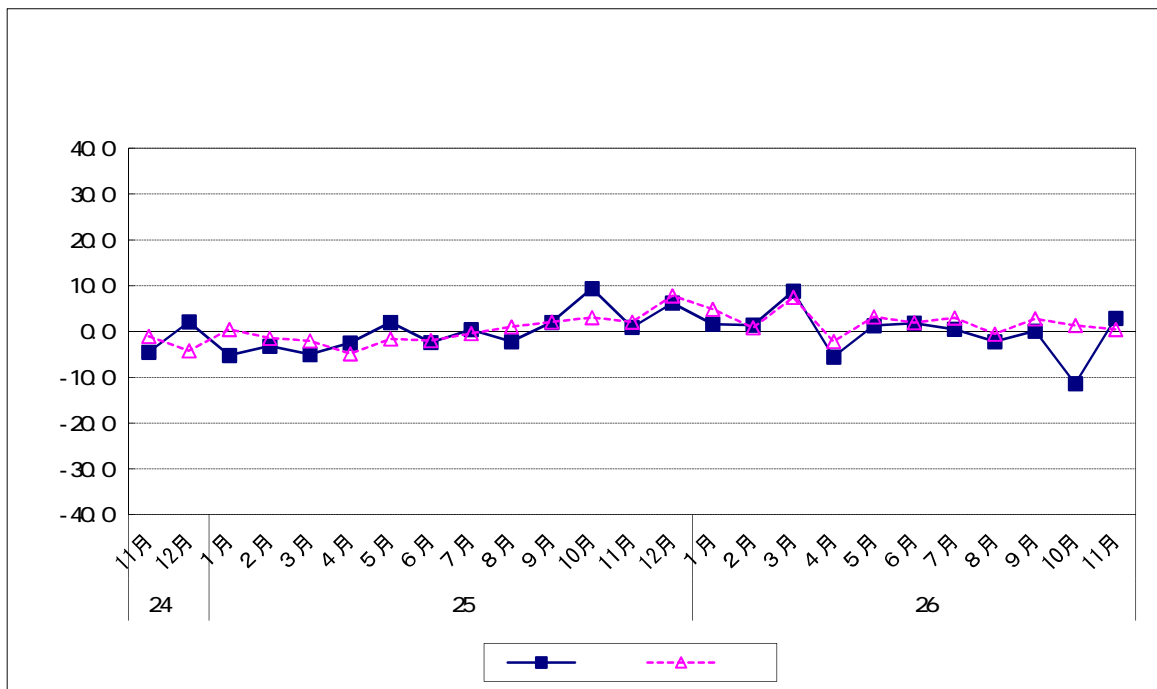
(2013)	11	13,349	0.9	9,654	1.6	3,696	1.1
	12	13,297	6.2	9,035	2.5	4,262	15.0
(2014)		10,306	1.6	7,944	0.0	2,362	7.6
		10,671	1.4	7,529	0.7	3,142	3.1
		12,951	8.8	9,088	9.6	3,863	6.9
		8,600	5.6	6,038	2.1	2,561	12.8
		11,128	1.3	7,945	4.8	3,183	6.4
		9,979	1.8	6,701	4.6	3,278	3.5
		11,490	0.5	8,200	1.1	3,290	4.9
		13,243	2.2	9,132	1.1	4,110	4.6
		11,997	0.1	8,169	0.7	3,828	1.6
	10	12,823	11.4	9,168	7.8	3,654	19.3
	11	13,739	2.9	10,381	7.5	3,358	9.1

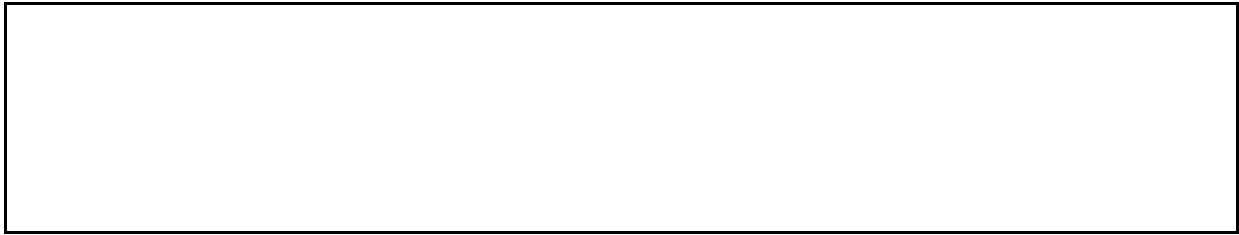
24

58

25

50



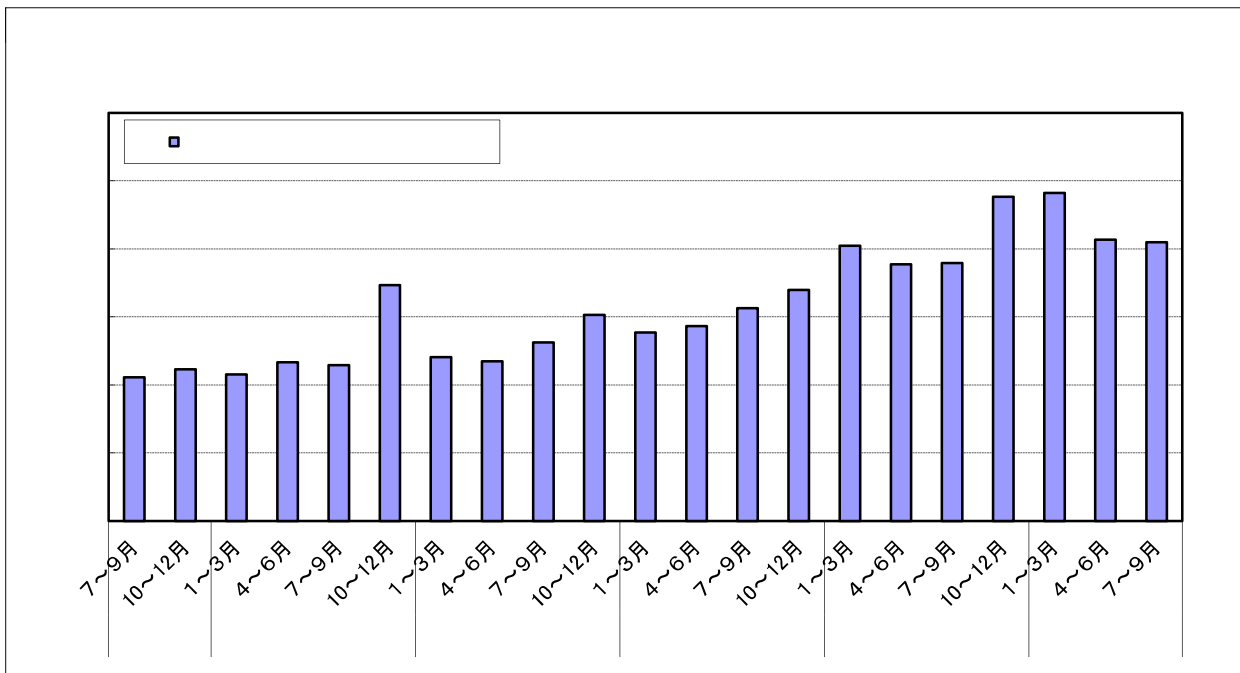


(2013)	11	4,871	48.1
	12	5,180	40.5
(2014)		5,003	12.7
		4,185	21.5
		5,279	23.9
		4,318	16.3
		3,975	11.2
		4,113	2.2
		4,417	10.4
		3,808	3.8
		4,067	9.8
	10	4,147	2.3
	11	4,838	0.7

(2012)		3,129	19.2
	10 12	3,395	12.1
(2013)		4,048	46.0
		3,771	31.7
		3,791	21.2
	10 12	4,765	40.4
2014		4,822	19.1
		4,135	9.7
		4,097	8.1

(2011)		2,603	1.6
(2012)		3,040	16.8
(2013)		4,094	34.7

資料出所:総務省「家計消費状況調査」  
 支出額:1ヶ月・1世帯あたり支出額(二人以上世帯)



--

( )

...

...

...

...

金融業・保険業、学術研究・専門技術サービス、  
 宿泊業・飲食業、卸売・小売業、運輸業・郵便業、医療・福祉、  
 生活関連サービス・娯楽業、情報通信業、建設業、  
 不動産業・物品賃貸業、サービス業(他に分類されないもの)、製造業

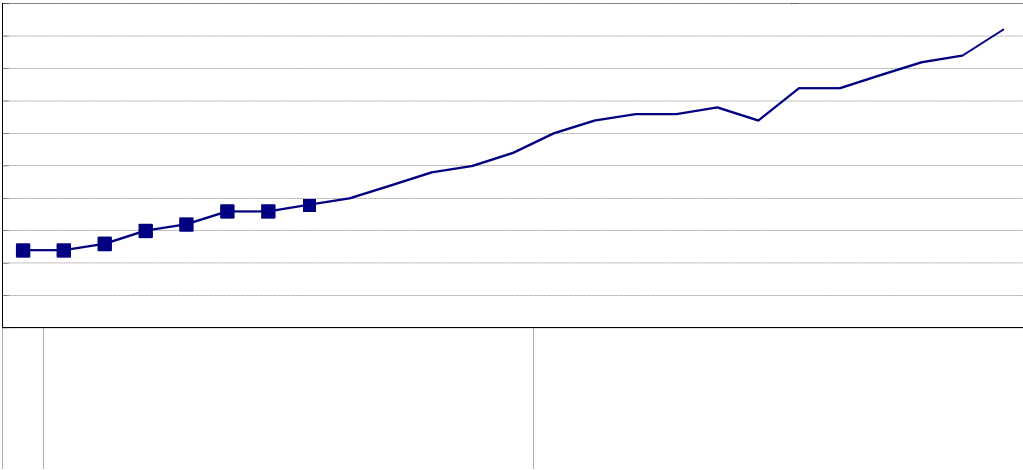
	12	0.87	0.02	0.15
(2014)		0.90	0.03	0.18
		0.92	0.02	0.19
		0.93	0.01	0.18
		0.93	0.00	0.17
		0.94	0.01	0.16
		0.92	0.02	0.14
		0.97	0.05	0.18
		0.97	0.00	0.17
		0.99	0.02	0.17
		10	1.01	0.02
	11	1.02	0.01	0.17
	12	1.06	0.04	0.19

(2013)		0.74	0.03	0.08
		0.77	0.03	0.07
		0.80	0.03	0.08
	10 12	0.85	0.05	0.14
(2014)		0.91	0.06	0.17
		0.93	0.02	0.16
		0.98	0.05	0.18
	10 12	1.03	0.05	0.18

23	0.60	0.10	
24	0.72	0.12	
25	0.83	0.11	

25 12

26 1



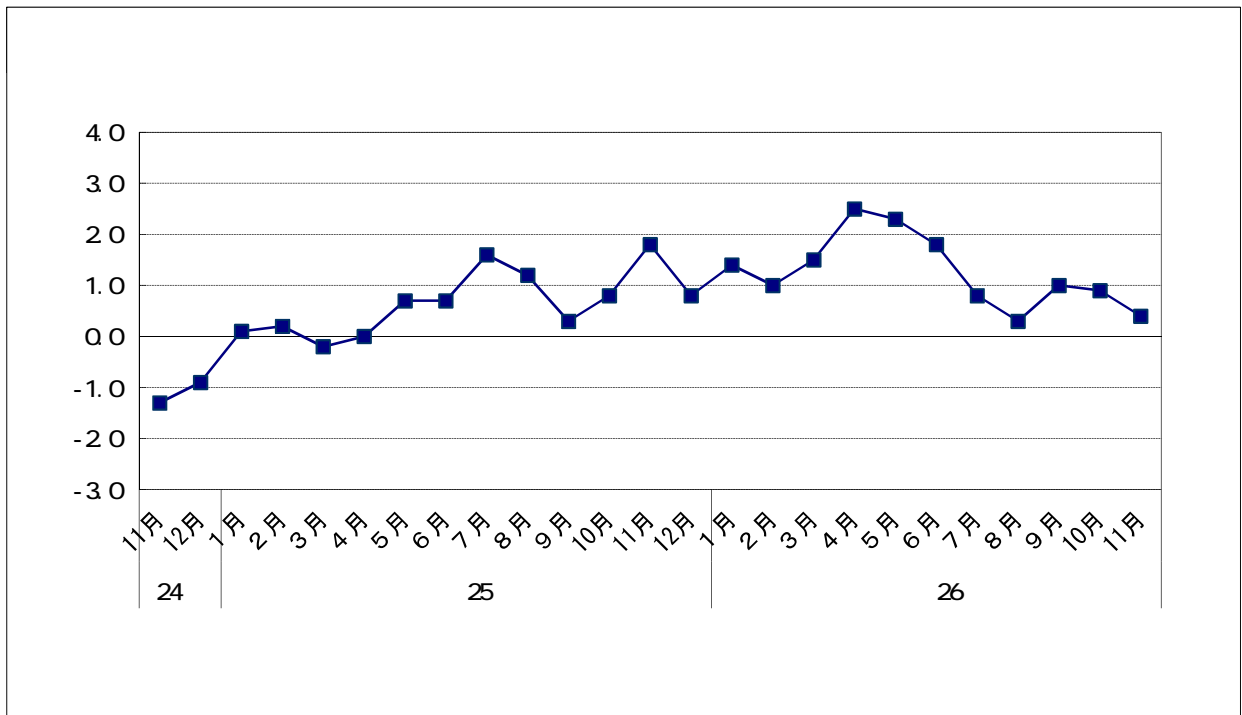
( )

( )

( 22 =100)

(2013)	11	249,243	98.5	1.8	263,763	86.7	0.8
	12	247,917	98.0	0.8	506,911	166.7	3.5
(2014)		245,120	96.9	1.4	257,500	84.7	0.0
		246,881	97.6	1.0	248,614	81.7	1.0
		249,094	98.5	1.5	270,714	89.0	2.4
		252,153	99.7	2.5	260,897	85.8	3.5
		250,464	99.0	2.3	260,746	85.7	4.3
		250,706	99.1	1.8	394,550	129.7	1.5
		249,163	98.5	0.8	361,488	118.8	2.1
		247,529	97.9	0.3	266,754	87.7	1.0
		249,101	98.5	1.0	252,876	83.1	0.4
	10	250,548	99.0	0.9	253,446	83.3	0.5
11	250,256	98.9	0.4	263,952	86.8	0.1	

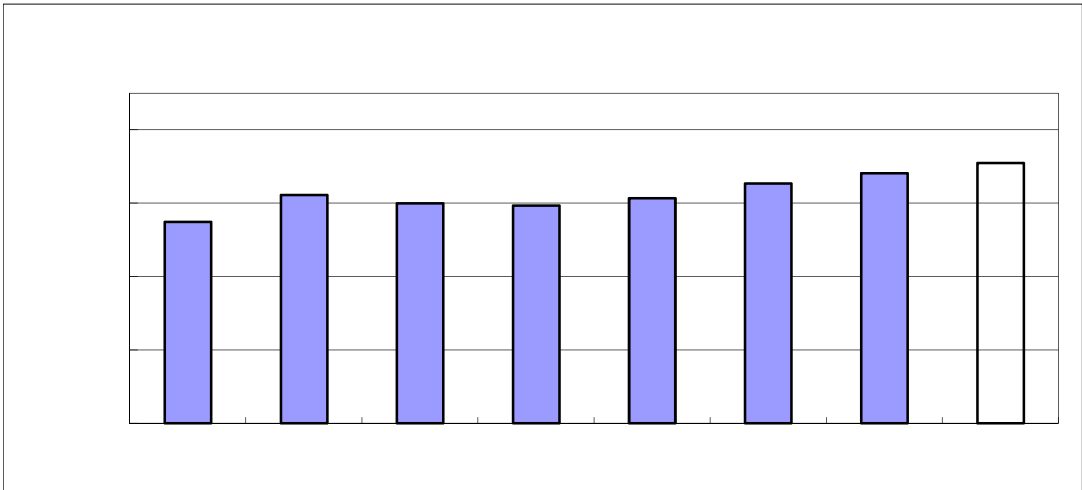
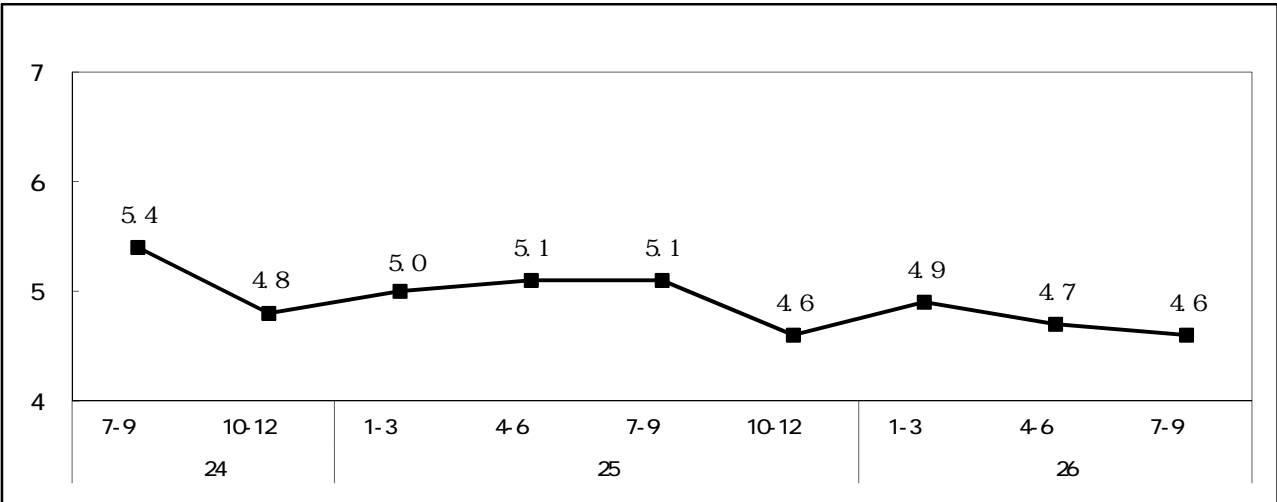
(2011)	302,061	98.3	1.7
(2012)	292,947	96.3	2.0
(2013)	296,062	97.3	1.0



÷ ×					

	23	2,531	2,388	143	1,857
	24	2,526	2,395	132	1,867
	25	2,532	2,406	126	1,868
25	7-9	2,530	2,400	130	1,871
	10-12	2,534	2,418	116	1,868
26	1-3	2,518	2,395	123	1,882
	4-6	2,571	2,450	121	1,829
	7-9	2,553	2,435	117	1,850
		23	35	13	21
					0.5

5



26

1 9



--

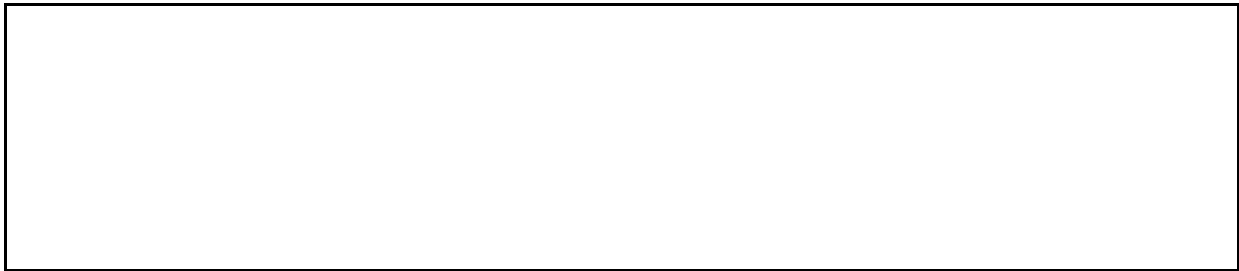
--

	12	1, 556, 415	1. 6
(2014)		1, 551, 441	1. 7
		1, 554, 108	1. 8
		1, 553, 763	1. 9
		1, 545, 039	1. 8
		1, 566, 094	1. 8
		1, 571, 415	1. 8
		1, 574, 461	1. 8
		1, 574, 420	1. 8
		1, 574, 711	1. 8
	10	1, 575, 361	1. 9
	11	1, 578, 238	1. 7
	12	1, 582, 420	1. 7

2013		1, 525, 628	1. 0
		1, 533, 436	1. 0
		1, 546, 834	1. 3
	10 12	1, 551, 539	1. 5
2014		1, 553, 104	1. 8
		1, 560, 849	1. 8
		1, 574, 531	1. 8
	10 12	1, 578, 673	1. 7

23		1, 506, 023	1. 4
24		1, 525, 101	1. 3
25		1, 546, 228	1. 4

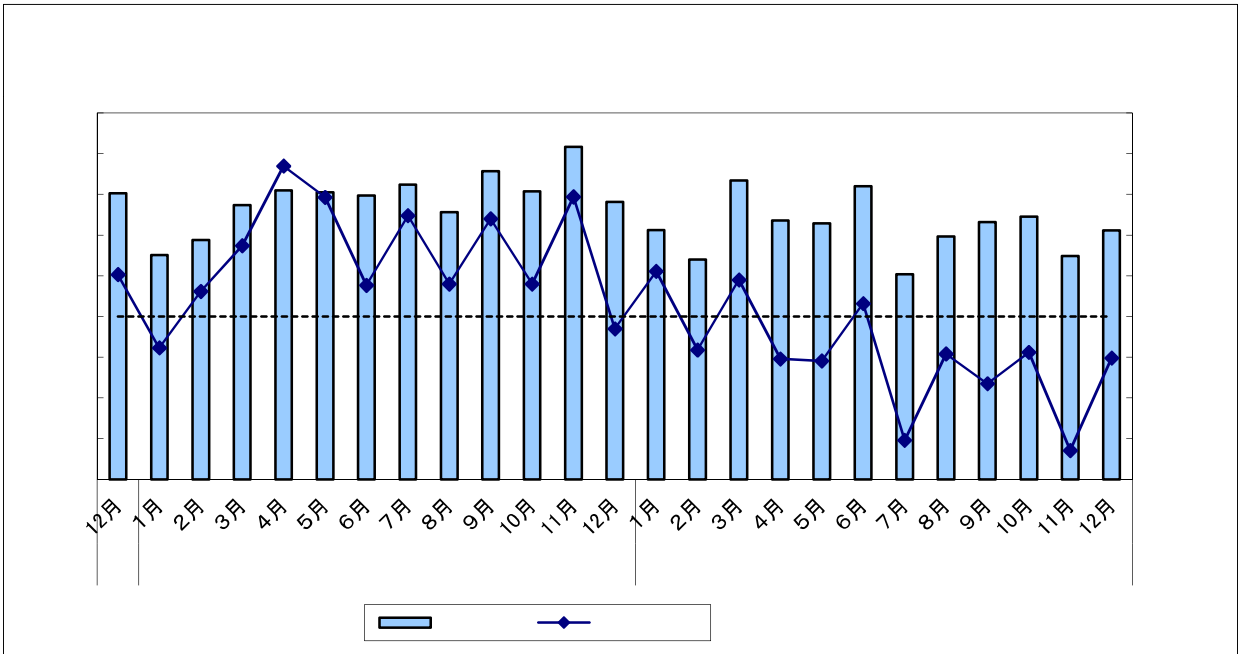
--



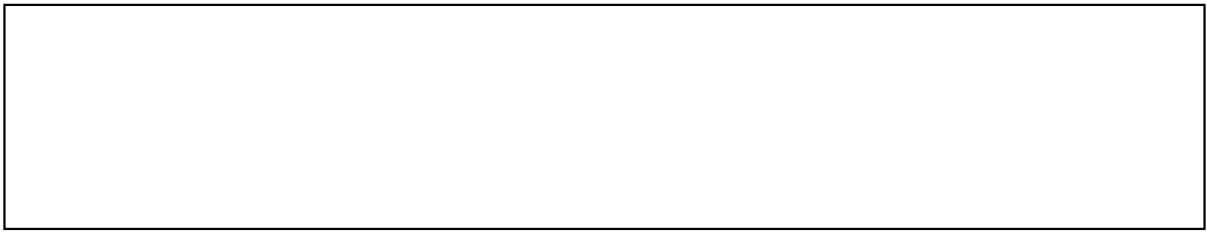
	12	3,407	3.0
(2014)		3,061	11.1
		2,698	8.2
		3,669	9.0
		3,181	10.4
		3,143	10.9
		3,598	3.2
		2,520	30.4
		2,981	9.2
		3,160	16.5
	10	3,225	8.8
	11	2,741	32.9
	12	3,058	10.2

2013		9,060	5.1
		10,562	23.4
		10,687	18.8
	10 12	11,026	10.9
2014		9,428	4.1
		9,922	6.1
		8,661	19.0
	10 12	9,024	18.2

(2012)	36,111	3.3	
(2013)	41,335	14.5	
(2014)	37,035	10.4	





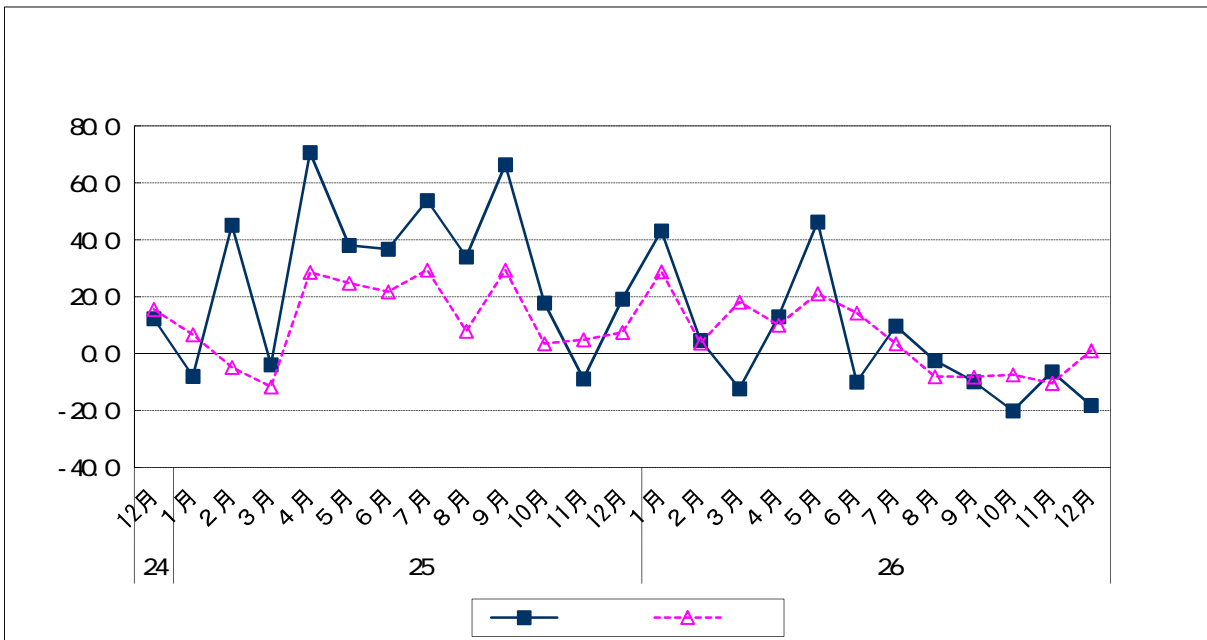


	12	34,700	19.2
(2014)		23,295	43.1
		23,493	4.6
		40,995	12.3
		54,172	13.0
		38,007	46.3
		38,518	10.0
		49,000	9.7
		38,629	2.4
		57,851	9.9
		10	47,221
	11	27,830	6.4
	12	28,395	18.2

(2013)		85,490	4.5
		116,710	49.3
		148,464	52.8
	10 12	123,532	10.4
(2014)		87,784	2.7
		130,697	12.0
		145,482	2.0
	10 12	103,447	16.3

23	(F. Y. 2011)	329,272	13.6
24	(F. Y. 2012)	372,763	13.2
25	(F. Y. 2013)	476,490	27.8

25 4	25 12	388,706	35.3
26 4	26 12	379,626	2.3







		22	100
(2014)	12	100.3	0.8
		99.9	0.5
		100.0	0.5
		100.1	0.5
		102.2	2.4
		102.5	2.5
		102.6	2.8
		102.7	2.9
		102.8	2.8
		102.8	2.5
	10	102.8	2.5
	11	103.0	2.9
12	103.1	2.9	

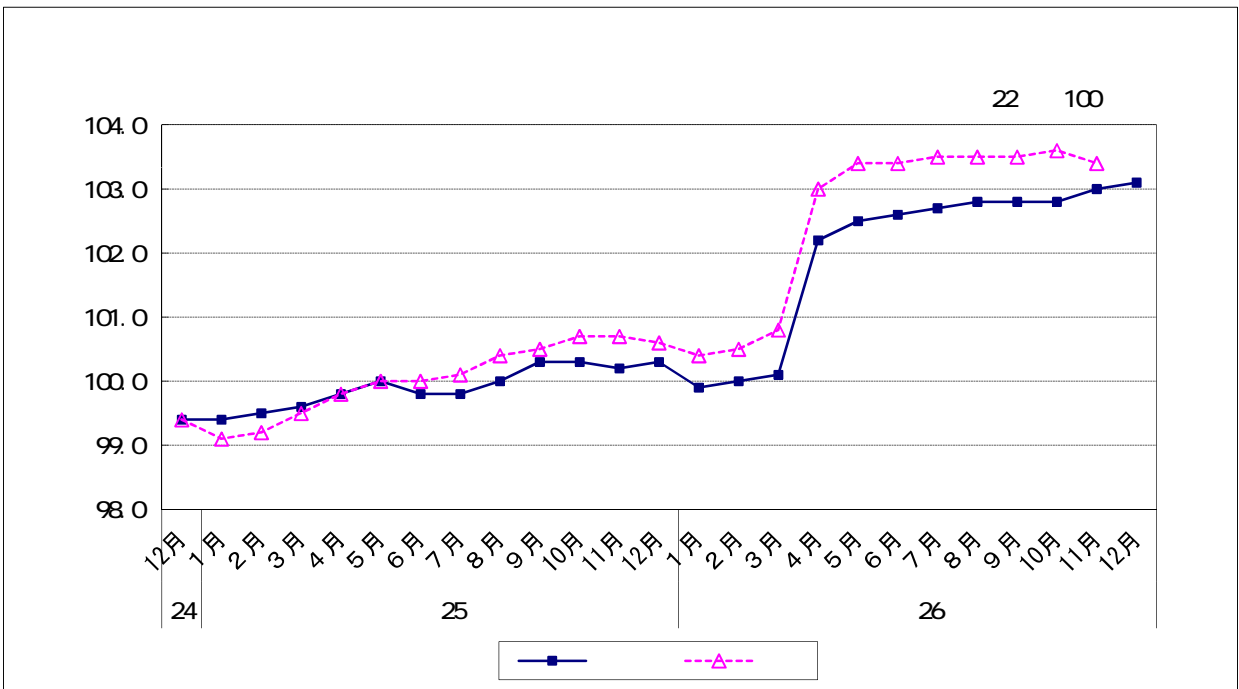
		22	100
(2013)		99.5	0.3
		99.9	0.2
		100.0	0.2
	10 12	100.3	0.6
2014		100.0	0.5
		102.4	2.5
		102.8	2.8
	10 12	103.0	2.7

		22	100
(2012)		99.8	0.0
(2013)		99.9	0.1
(2014)		102.0	2.1

H23 7 6

22 100





		22	100
2014	12	102.8	2.5
		103.0	2.5
		102.8	1.8
		102.8	1.7
		105.7	4.1
		106.0	4.3
		106.2	4.5
		106.6	4.4
		106.4	3.9
		106.4	3.6
	10	105.5	2.9
	11	105.2	2.6
	12	p104.8	p1.9

		22	100
(2013)		100.9	0.3
		101.6	0.7
		102.4	2.2
	10 12	102.6	2.5
2014		102.9	2.0
		106.0	4.3
		106.5	4.0
	10 12	105.2	2.5

		22	100
	(2012)	100.6	0.9
	(2013)	101.9	1.3
	(2014)	105.1	3.1

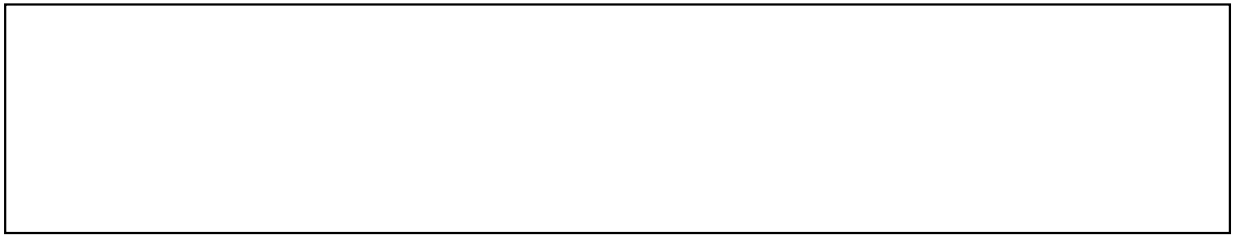
p

24 6

22 100

60

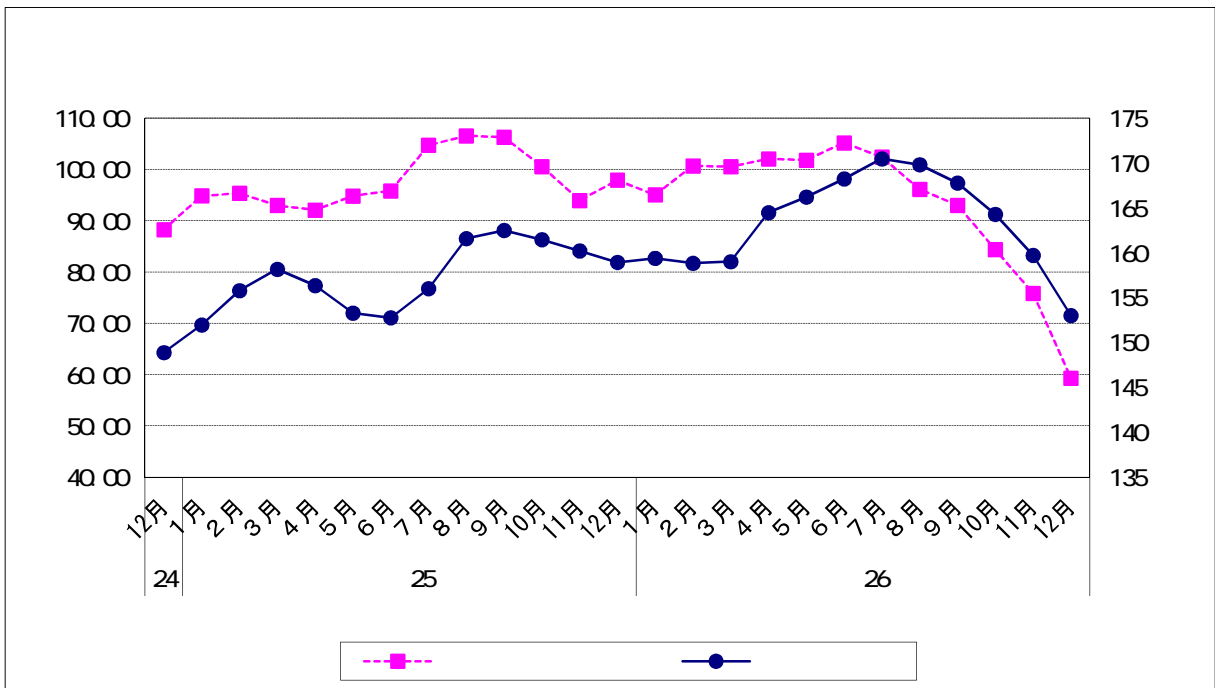
22 100



		( )		(WI)					
								18	
(2014)	12	107.82	1.98	97.89	3.96	159	1	1,836	27
		103.67	4.15	95.01	2.88	159	0	1,862	25
		105.07	1.40	100.68	5.67	159	1	1,849	13
		104.51	0.56	100.51	0.17	159	0	1,845	4
		104.79	0.28	102.03	1.52	164	5	1,908	63
		105.69	0.90	101.79	0.24	166	2	1,908	0
		108.17	2.48	105.15	3.36	168	2	1,908	0
		105.79	2.38	102.39	2.76	170	2	1,921	13
		101.71	4.08	96.08	6.31	170	1	1,918	3
		96.94	4.77	93.00	3.08	168	2	1,914	4
	10	86.91	10.03	84.34	8.66	164	3	1,895	19
	11	76.28	10.63	75.81	8.53	160	5	1,839	56
	12	60.98	15.30	59.29	16.52	153	7	1,755	84

H23.4

WI H20.5 NY





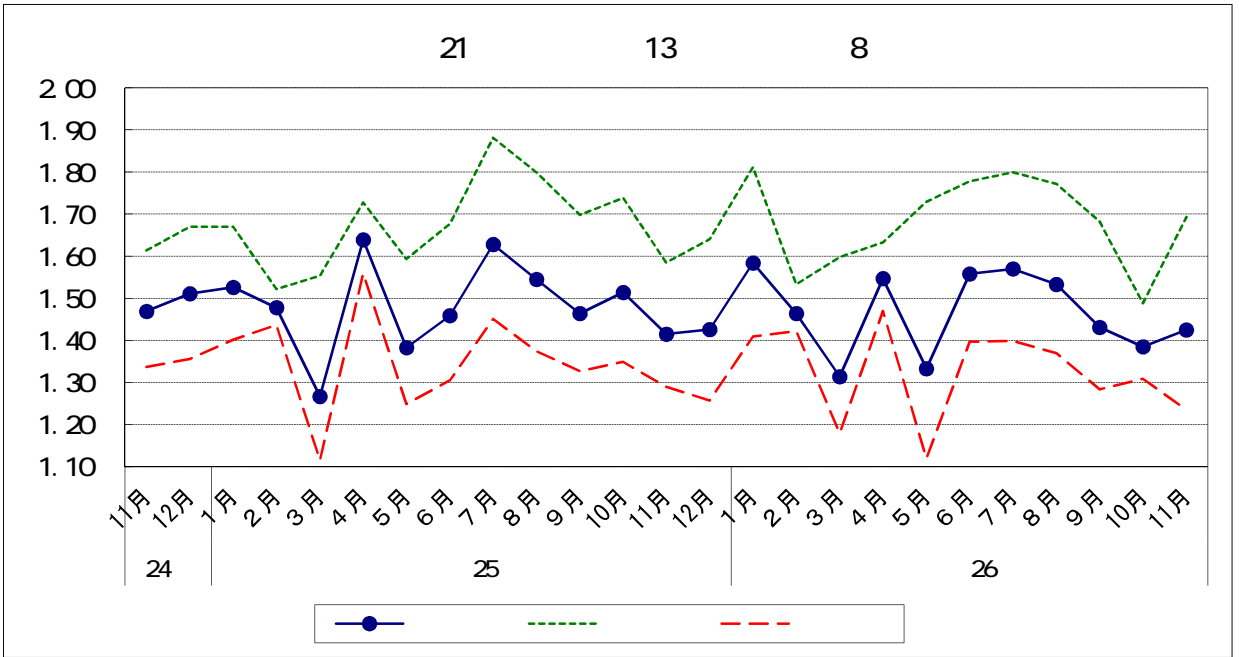


(2013)	11	224,012	1.07	165,431	0.81	3.73
	12	226,080	0.92	166,810	0.83	3.42
(2014)		223,745	1.03	166,150	0.40	3.41
		224,745	0.45	166,811	0.40	3.35
		227,300	1.14	167,568	0.45	3.38
		228,246	0.42	167,300	0.16	3.48
		228,748	0.22	167,303	0.00	3.74
		228,552	0.09	167,093	0.13	3.59
		227,115	0.63	168,135	0.62	3.96
		230,337	1.42	168,689	0.33	3.96
		227,866	1.07	170,294	0.95	4.05
	10	228,414	0.24	170,652	0.21	4.00
	11	231,704	1.44	171,291	0.37	3.54

JA

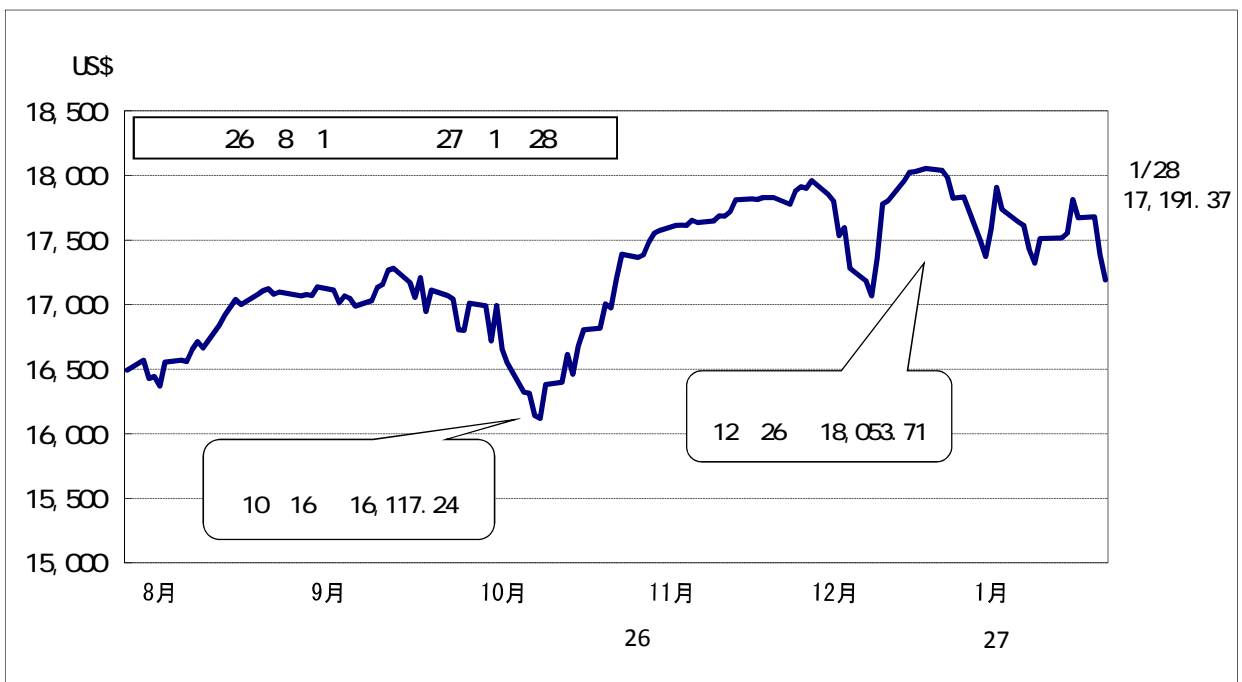
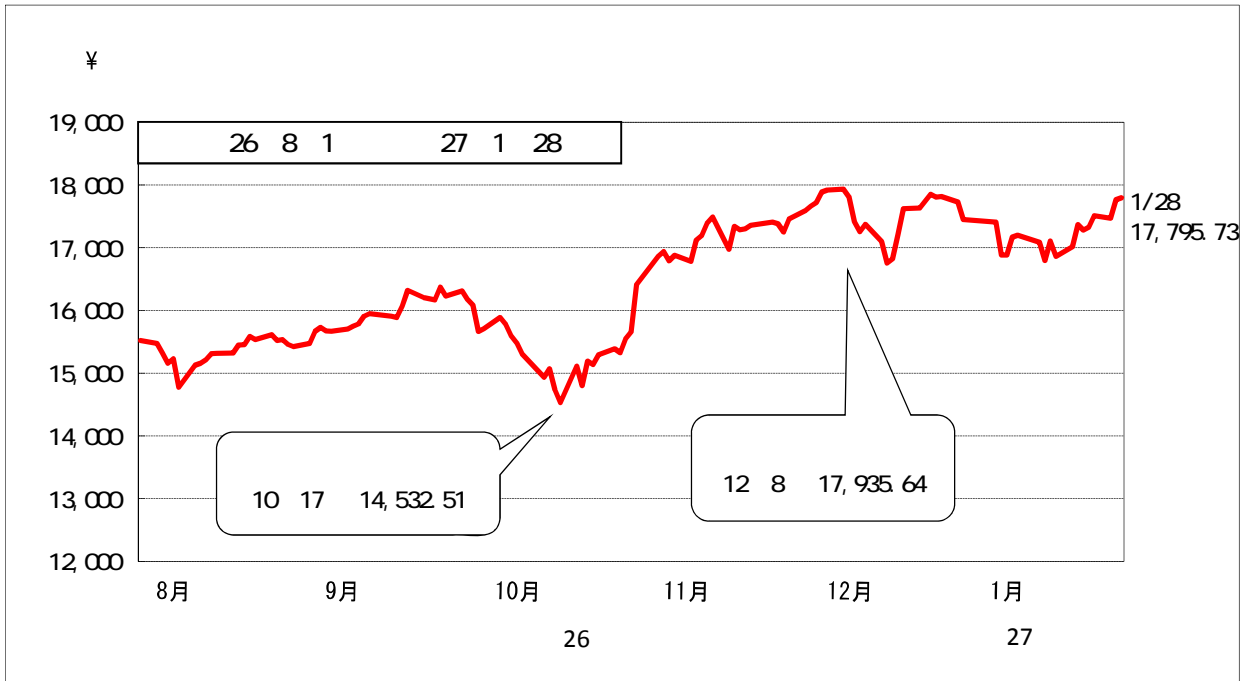
( 21 ( 13 8 ) ) (2014 11 )

(2013)	11	1.415	0.099	0.054	1.585	0.153	0.029	1.290	0.059	0.047
	12	1.426	0.011	0.085	1.640	0.055	0.030	1.257	0.033	0.099
(2014)		1.584	0.158	0.058	1.811	0.171	0.141	1.409	0.152	0.007
		1.464	0.120	0.014	1.533	0.278	0.011	1.422	0.013	0.015
		1.314	0.150	0.047	1.598	0.065	0.044	1.180	0.242	0.065
		1.547	0.233	0.092	1.633	0.035	0.095	1.470	0.290	0.089
		1.333	0.214	0.050	1.729	0.096	0.136	1.120	0.350	0.129
		1.558	0.225	0.099	1.778	0.049	0.101	1.397	0.277	0.092
		1.570	0.012	0.058	1.799	0.021	0.082	1.399	0.002	0.052
		1.533	0.037	0.012	1.772	0.027	0.027	1.370	0.029	0.004
		1.431	0.102	0.033	1.682	0.090	0.016	1.284	0.086	0.043
		10	1.385	0.046	0.129	1.488	0.194	0.250	1.309	0.025
	11	1.425	0.040	0.010	1.693	0.205	0.108	1.235	0.074	0.055



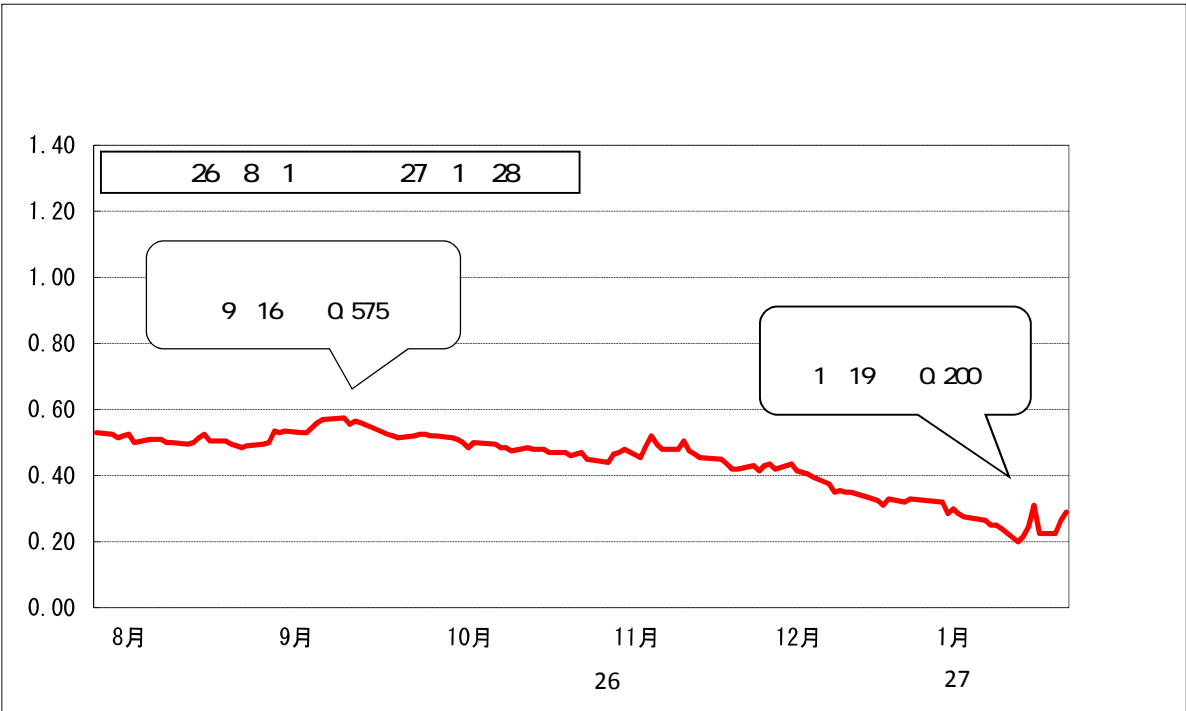
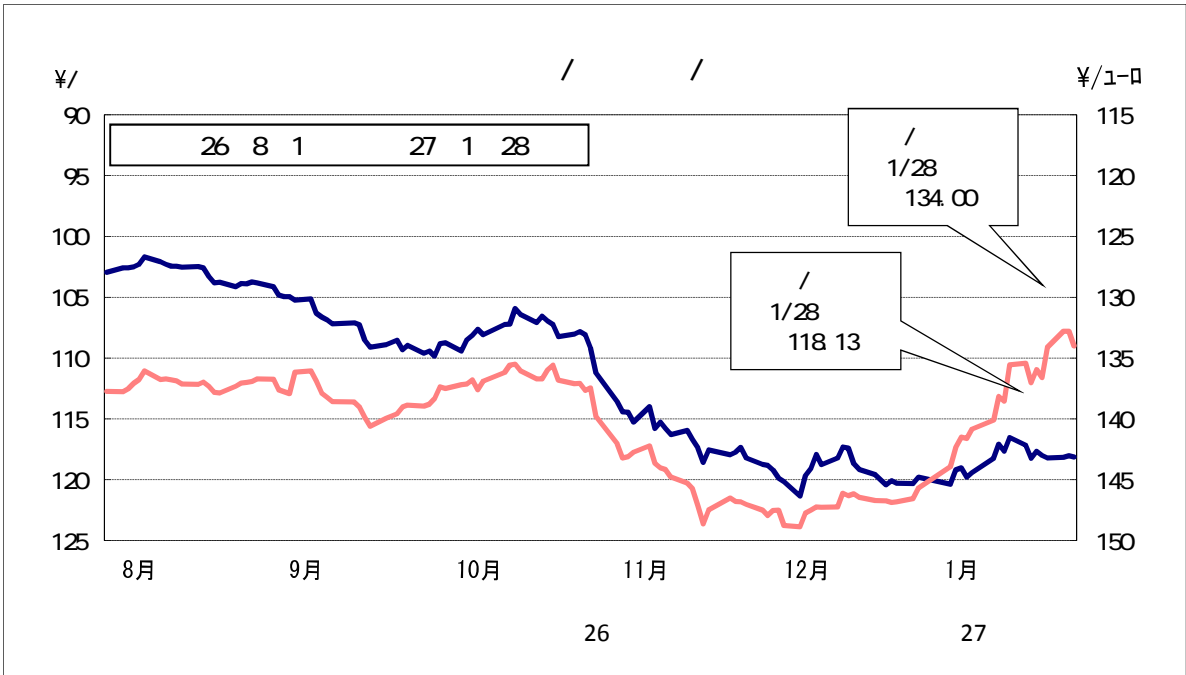


17,000 17,700

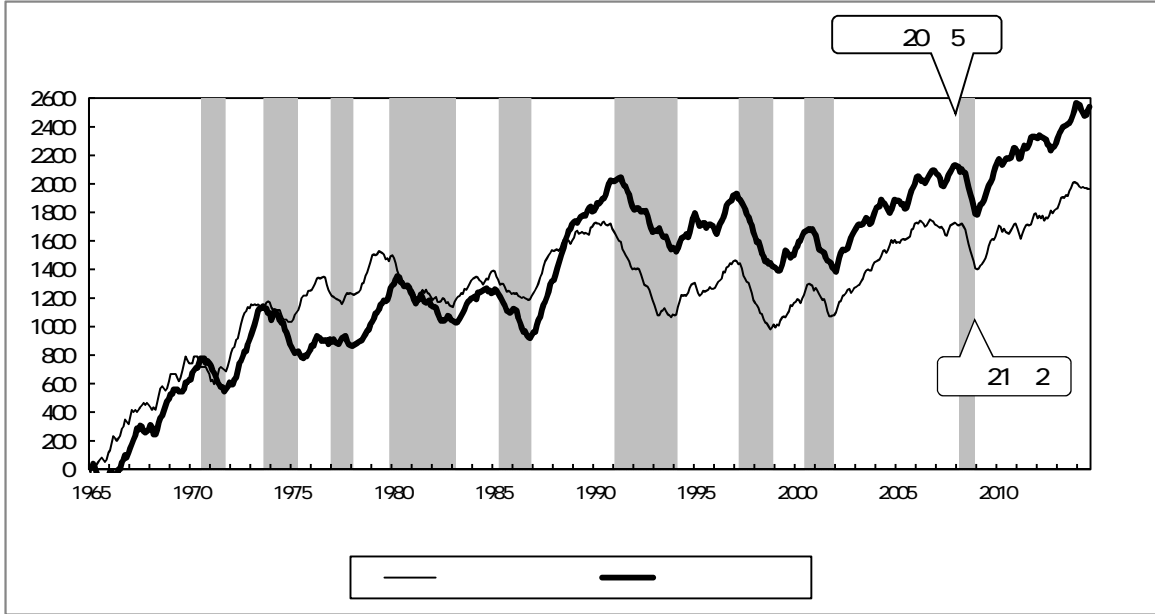




117 118  
Q 2 Q 3







1965 4





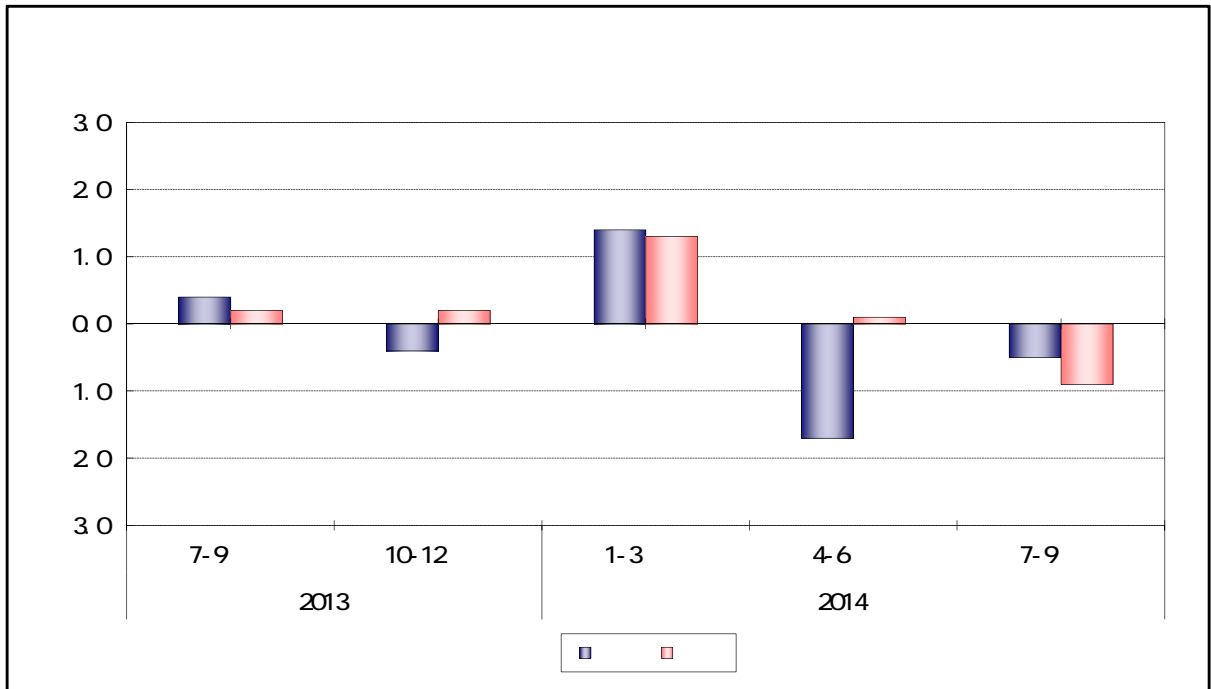



2014( 26) 7 9

2

2014 7 9  
( 1.9 )

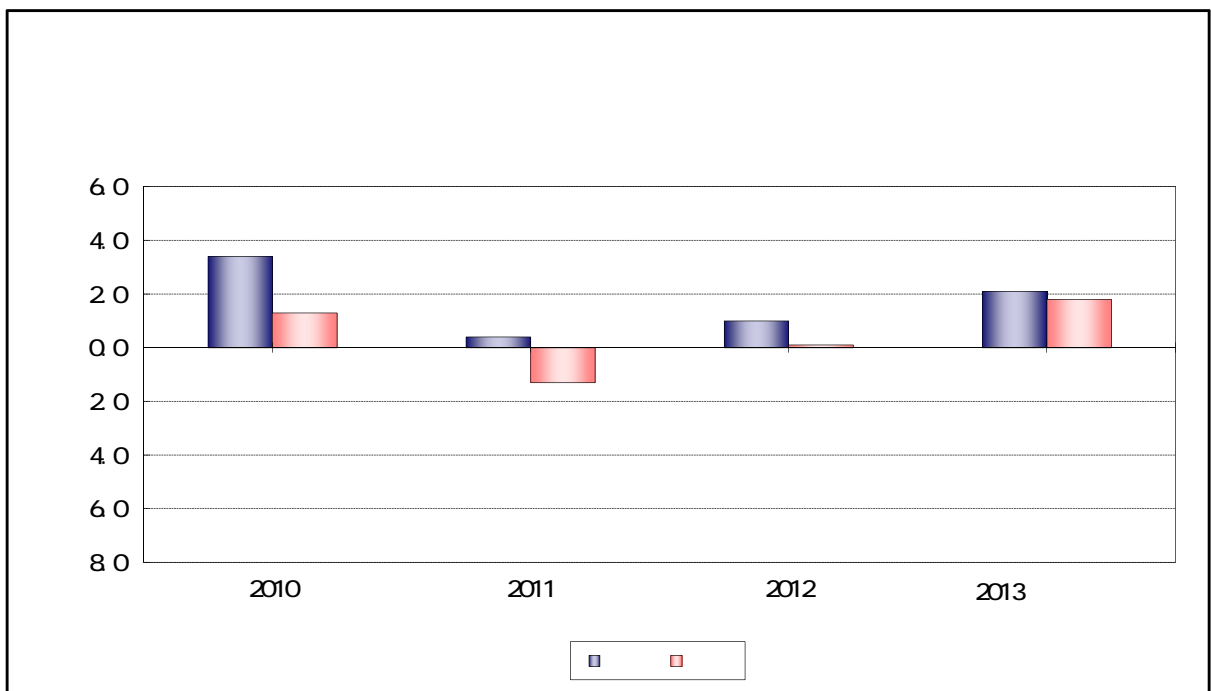
( 2005 ) 0.9 ( 3.5 ) 0.5



2013  
2013

2.1

1.8



	平成25年度 (実績)	平成26年度 (実績見込み)	平成27年度 (見通し)	対前年度比増減率					
				平成25年度		平成26年度		平成27年度	
				兆円 (名目)	兆円程度 (名目)	兆円程度 (名目)	% (名目)	% (実質)	%程度 (名目)
国内総生産	483.1	491.4	504.9	1.8	2.1	1.7	▲ 0.5	2.7	1.5
民間最終消費支出	296.5	295.3	303.5	2.7	2.5	▲ 0.4	▲ 2.7	2.8	2.0
民間住宅	15.9	14.6	14.9	12.5	9.3	▲ 7.8	▲ 10.7	1.9	1.5
民間企業設備	68.2	69.6	73.3	4.9	4.0	2.2	1.2	5.3	5.3
民間在庫品増加 ( )内は寄与度	▲ 3.9	▲ 1.5	▲ 1.5	(▲ 0.5)	(▲ 0.5)	(0.5)	(0.4)	(▲ 0.0)	(▲ 0.0)
財貨・サービスの輸出	80.0	87.2	93.8	13.6	4.7	9.0	6.0	7.5	5.2
(控除)財貨・サービスの輸入	95.9	100.8	103.6	18.7	6.7	5.1	2.5	2.8	3.9
内需寄与度				3.0	2.6	1.2	▲ 1.0	2.0	1.4
民間寄与度				2.2	1.8	0.3	▲ 1.3	2.5	2.0
公需寄与度				0.8	0.8	0.9	0.3	▲ 0.5	▲ 0.6
外需寄与度				▲ 1.2	▲ 0.5	0.5	0.5	0.8	0.1
国民総所得	501.1	511.7	526.9	2.3	2.0	2.1	▲ 0.2	3.0	2.1
労働・雇用	万人	万人程度	万人程度		%	%程度		%程度	
労働力人口	6,578	6,589	6,596		0.3		0.2		0.1
就業者数	6,322	6,354	6,364		0.7		0.5		0.2
雇用者数	5,564	5,601	5,617		1.0		0.7		0.3
完全失業率	% 3.9	%程度 3.6	%程度 3.5						
生産	%	%程度	%程度						
鉱工業生産指数・増減率	3.2	▲ 0.5	2.7						
物価	%	%程度	%程度						
国内企業物価指数・変化率	1.9	3.1	▲ 1.0						
消費者物価指数・変化率	0.9	3.2	1.4						
GDPデフレーター・変化率	▲ 0.3	2.2	1.2						
国際収支	兆円	兆円程度	兆円程度		%	%程度	%程度		
貿易・サービス収支	▲ 14.4	▲ 11.7	▲ 8.2						
貿易収支	▲ 11.0	▲ 8.3	▲ 4.8						
輸出	69.8	74.5	80.9		12.2		6.8		8.6
輸入	80.8	82.8	85.7		19.7		2.5		3.5
経常収支	0.8	5.1	10.2						
経常収支対名目GDP比	% 0.2	%程度 1.0	%程度 2.0						

(注1) 消費者物価指数は総合である。

(注2) 消費税率上げの影響を機械的に除いて試算すると、平成26年度の消費者物価指数・変化率は1.2%程度、GDPデフレーター変化率は0.8%程度と見込まれる。

本経済見通しに当たっては、「2. 平成27年度の経済財政運営の基本的態度」に記された経済財政運営を前提としている。

世界GDP(日本を除く)、円相場、原油輸入価格については、以下の前提を置いている。なお、これらは、作業のための想定であって、政府としての予測あるいは見通しを示すものではない。

	平成25年度 (実績)	平成26年度	平成27年度
世界GDP(日本を除く)の 実質成長率(%)	3.0	3.1	3.6
円相場(円/ドル)	100.2	109.9	118.7
原油輸入価格(ドル/バレル)	109.6	94.5	69.3

(備考)

1. 世界GDP(日本を除く)の実質成長率は、国際機関等の経済見通しを基に算出。
2. 円相場は、平成26年11月25日～平成26年12月19日の期間の平均値(118.7円/ドル)で同年12月20日以後一定と想定。
3. 原油輸入価格は、平成26年11月25日～平成26年12月19日の期間のスポット価格の平均値に運賃、保険料を付加した値(69.3ドル/バレル)で同年12月20日以後一定と想定。

我が国経済は民間活動がその主体をなすものであること、また、特に国際環境の変化には予見しがたい要素が多いことに鑑み、上記の諸計数はある程度幅を持って考えられるべきものである。

27 1 20

	2015	2016
	0.6	0.8
	3.6	3.3
	1.2	1.4
	6.8	6.3
	3.5	3.7

26 11 25

	2014	2015	2016
	0.4	0.8	1.0
	2.2	3.1	3.0
	0.8	1.1	1.7
	1.8	2.3	2.6

26 9 25

	2014	2015
	6.2	6.4
	7.5	7.4
	2.5	3.2
	3.7	3.8
	3.4	3.3
	5.5	6.3
	5.3	5.8
	5.7	5.3
	6.2	6.4
	3.5	3.9
	1.6	4.5
	5.5	5.7

27 1 21

			10				10				10	
	-0.6	-0.4	+0.2	+0.7	+1.8	+2.3	+1.2	+1.7	+1.5	+1.7	+1.0	+1.4
	< -0.5 >		< +0.5 >		< +2.1 >		< +1.5 >		< +1.6 >		< +1.2 >	
	-0.7	-0.3	+0.1	+1.0	+1.3	+2.3	+0.8	+1.8	+0.7	+2.0	+0.6	+1.6

55

70

2017 10



主要経済指標の国際比較(2)

(参考)国際機関の実質GDP見通し(%)

国・地域名	消費者物価(前年比%)											一般政府財政収支(名目GDP比%)			一般政府債務残高(名目GDP比:%)			経常収支(名目GDP比%)			IMF, 2014年10月		OECD, 2014年11月	
	2012年		2013年		14年			2013年		2014年		2013年		2014年		2012年		2013年		2015年		2016年		
	7-9月	10-12月	4-6月	7-9月	10-12月	10月	11月	12月	▲8.2	▲7.1	▲8.2	▲7.1	▲8.2	▲7.1	▲8.2	▲7.1	▲8.2	▲7.1	▲8.2	0.6*	0.8*	0.6*	0.8*	
日本	0.0	0.4	3.6	3.3	2.9	2.4			▲8.6	▲7.1	243.2	245.1	1.0	0.7	0.6*	0.8*	0.6*	0.8*	0.6*	0.8*	0.6*	0.8*		
アメリカ	2.1	1.5	2.1	1.8	1.2	1.7	1.3	0.8	▲5.8	▲5.5	104.2	105.6	▲2.9	▲2.4	3.6*	3.3*	3.6*	3.3*	3.6*	3.3*	3.6*	3.3*		
カナダ	1.5	0.9	2.2	2.1	0.2	2.3	2.1		▲3.0	▲2.6	88.8	88.1	▲3.4	▲3.2	2.3*	2.1*	2.3*	2.1*	2.3*	2.1*	2.3*	2.1*		
ユーロ圏	2.5	1.4	0.6	0.3	0.2	0.4	0.3	▲0.2	▲3.0	▲2.9	95.2	96.4	1.4	2.4	1.2*	1.4*	1.2*	1.4*	1.2*	1.4*	1.2*	1.4*		
ドイツ	2.0	1.5	1.0	0.8	0.5	0.8	0.6	0.2	0.2	0.3	78.4	75.5	7.4	7.0	1.3*	1.5*	1.3*	1.5*	1.3*	1.5*	1.3*	1.5*		
フランス	2.0	0.9	0.6	0.4	0.3	0.5	0.3	0.1	▲4.2	▲4.4	91.8	95.2	▲2.1	▲1.3	0.9*	1.3*	0.9*	1.3*	0.9*	1.3*	0.9*	1.3*		
イタリア	3.0	1.2	0.5	▲0.1	0.1	0.1	0.2	0.0	▲3.0	▲3.0	132.5	136.7	▲0.3	1.0	0.4*	0.8*	0.4*	0.8*	0.4*	0.8*	0.4*	0.8*		
スペイン	2.5	1.4	0.2	▲0.3	▲0.5	▲0.1	▲0.4	▲1.0	▲7.1	▲5.7	93.9	98.6	▲1.2	0.8	2*	1.8*	2*	1.8*	2*	1.8*	2*	1.8*		
英国	2.8	2.6	2.7	2.1	1.7	1.3	1.0	0.5	▲5.8	▲5.3	90.6	92.0	▲3.8	▲4.5	2.7*	2.4*	2.7*	2.4*	2.7*	2.4*	2.7*	2.4*		
スイス	▲0.7	▲0.2	0.1	0.0	▲0.1	▲0.0	▲0.1	▲0.3	0.2	0.5	48.3	47.2	11.2	10.0	1.6	2.0	1.6	2.0	1.6	2.0	1.6	2.0		
ロシア	5.1	6.8	7.6	7.7	9.6	8.3	9.1	11.4	▲1.3	▲0.9	13.9	15.7	3.5	1.6	▲0.3*	▲1.0*	▲0.3*	▲1.0*	▲0.3*	▲1.0*	▲0.3*	▲1.0*		
オーストラリア	1.8	2.4	3.0	2.3	-	-	-	-	▲3.5	▲3.3	28.6	30.6	▲4.4	▲3.3	2.9	3.0	2.9	3.0	2.9	3.0	2.9	3.0		
韓国	2.2	1.3	1.6	1.4	1.0	1.6	1.4	1.5	▲0.9	▲1.0	39.4	40.7	2.6	1.9	6.8*	6.3*	6.8*	6.3*	6.8*	6.3*	6.8*	6.3*		
香港	4.1	4.3	3.6	4.8	1.2	1.0	0.8	0.7	0.3	0.3	33.9	35.4	4.2	6.1	4.0	4.0	4.0	4.0	4.0	4.0	4.0	4.0		
インド	10.2	9.5	8.1	7.4	5.0	5.5	4.4	5.0	▲7.2	▲7.2	61.5	60.5	▲4.7	▲1.7	6.3*	6.5*	6.3*	6.5*	6.3*	6.5*	6.3*	6.5*		
ブラジル	5.4	6.2	6.4	6.6	6.5	6.6	6.6	6.4	▲3.3	▲3.9	66.2	65.8	▲2.4	▲3.6	0.3*	1.5*	0.3*	1.5*	0.3*	1.5*	0.3*	1.5*		
メキシコ	4.1	3.8	3.6	4.1	4.2	4.3	4.2	4.1	▲3.8	▲4.2	46.4	48.0	▲1.3	▲2.1	3.2*	3.5*	3.2*	3.5*	3.2*	3.5*	3.2*	3.5*		
アルゼンチン	10.0	10.9	-	-	-	1.2	1.1	1.0	▲2.8	▲4.5	41.0	48.9	▲0.2	▲0.8	▲1.5	-	▲1.5	-	▲1.5	-	▲1.5	-		
トルコ	6.2	7.4	9.2	8.9	8.8	9.0	9.2	8.2	▲1.5	▲2.0	▲1.5	▲2.0	▲6.2	▲7.9	3.0	3.7	3.0	3.7	3.0	3.7	3.0	3.7		
サウジアラビア	2.9	3.5	-	-	-	2.6	2.5	2.5	8.7	5.2	2.7	2.6	22.4	17.7	2.8*	2.7*	2.8*	2.7*	2.8*	2.7*	2.8*	2.7*		
南アフリカ	5.6	5.7	6.6	5.9	5.8	5.9	5.8	5.8	▲4.4	▲4.9	45.2	47.9	▲5.2	▲5.8	2.1*	2.5*	2.1*	2.5*	2.1*	2.5*	2.1*	2.5*		

(出所)IMF“World Economic Outlook”(14年10月)、  
 (\*は15年1月にアップデートされた数字)  
 OECD“Economic Outlook 96”(14年11月)

(備考)1. 各国統計より作成。ただし、一般政府財政収支、一般政府債務残高については特に断りのない限りIMFより作成。  
 2. 日本の財政収支及び債務残高のカッコ内は、国・地方合計の年度(4月~3月)の値。内閣府より作成。  
 3. インドは年度(4月~3月)の数値。  
 4. アルゼンチンの14年1月以降の消費者物価は、新指標公表により13年と連続せず。数値は前月比のみ公表。

