

22 100

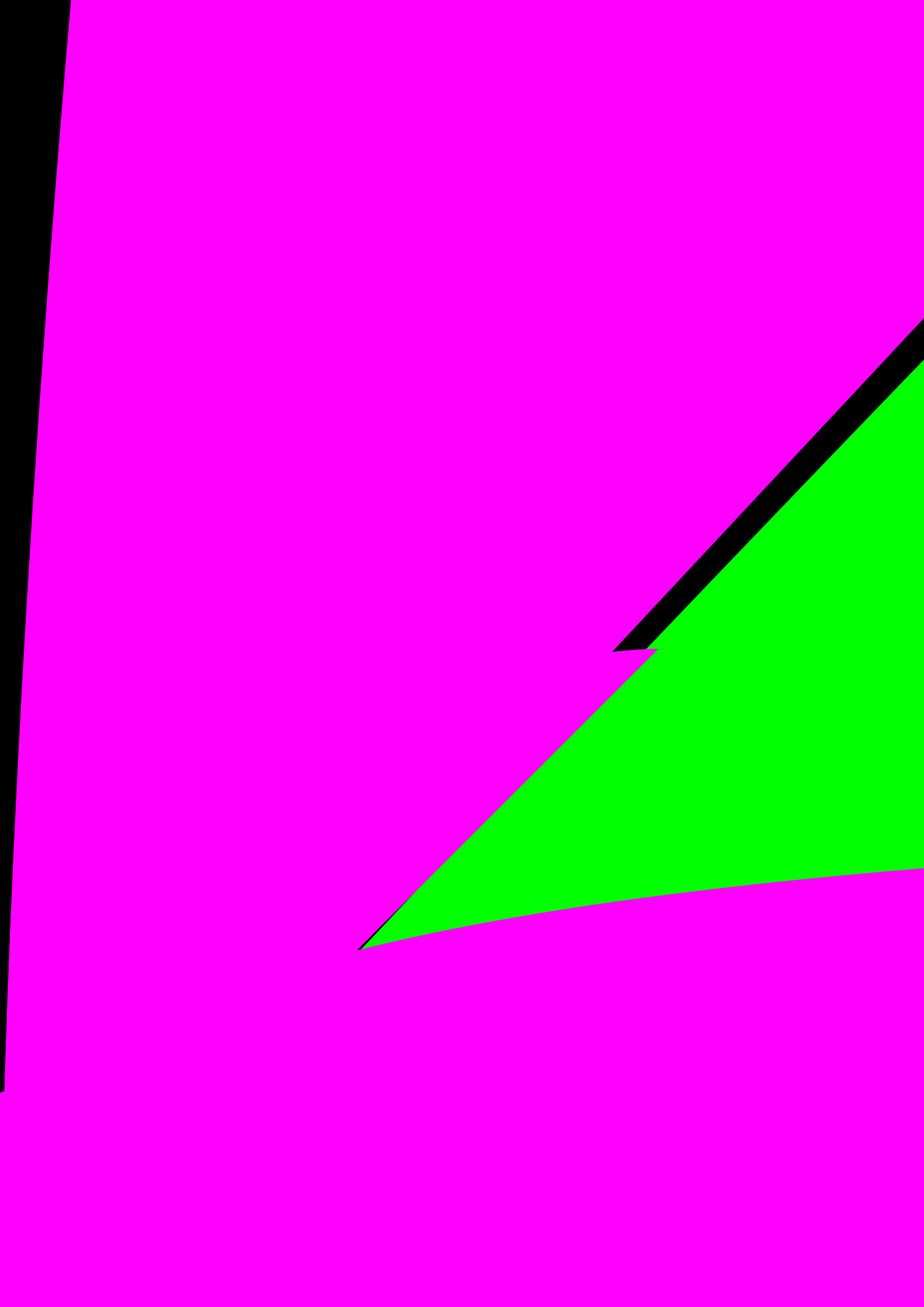
		106.9	1.7	108.6	0.6	132.2	2.5
		103.8	2.9	104.5	3.8	132.3	0.1
	4 6	105.2	1.3	106.3	1.7	130.2	1.6
		105.5	0.3	107.3	0.9	149.6	14.9
		101.5	3.8	103.0	4.0	158.4	5.9
		110.0	0.5	112.1	0.5	130.6	8.1
		100.5	5.3	101.4	5.5	123.8	4.7
	4 6	102.1	0.3	103.1	0.3	130.9	1.2
		108.6	2.2	110.2	1.2	151.2	10.3
		104.3	5.2	106.3	5.2	156.5	19.8

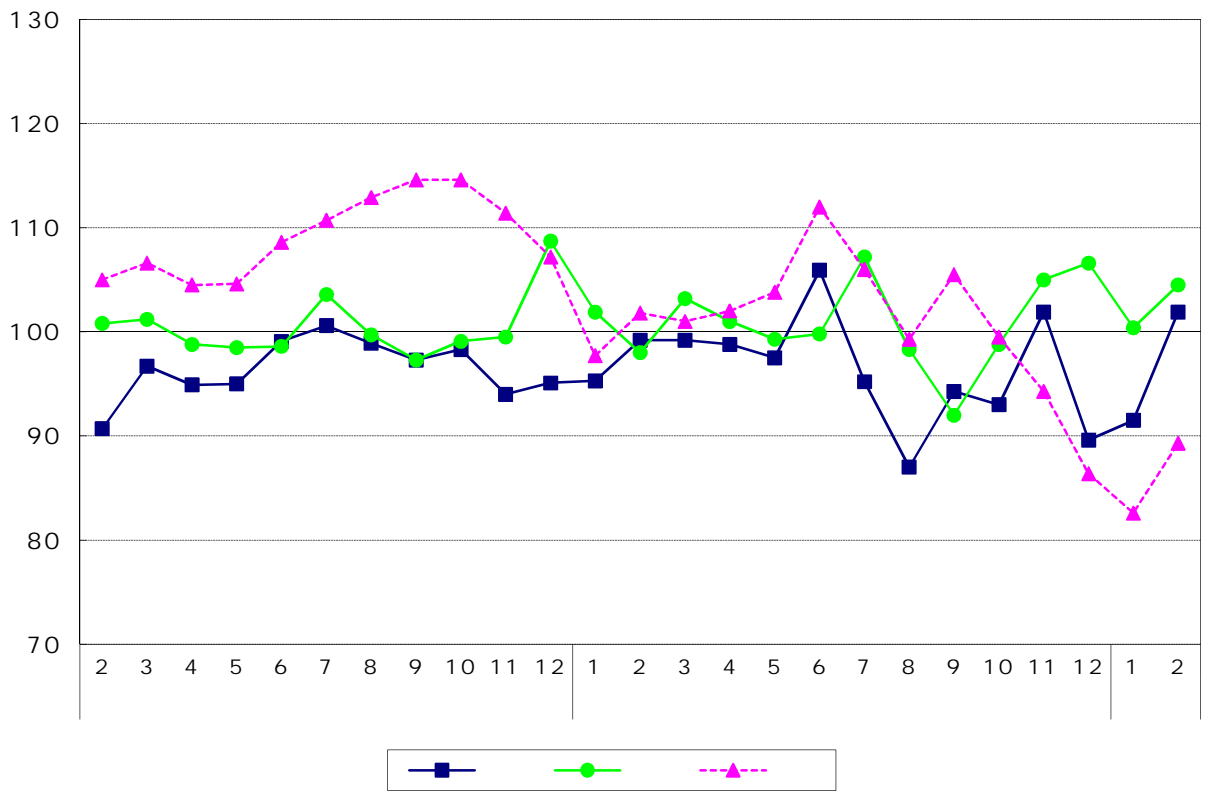
	8.4	13.5	
	0.3	5.1	
	13.1	0.2	
	9.7	20.7	
	3.0	7.9	
	3.3	17.4	
	11.4	2.6	
	4.9	6.2	
	3.4	4.5	

	3.9	3.7	
	6.6	10.9	
	6.3	4.5	
	2.8	48.5	
	1.6	8.7	
	5.1	5.1	
	4.1	6.6	
	7.4	8.8	
	3.3	5.6	

	5.3	6.7	
	1.1	19.9	
	19.5	38.4	
	4.7	26.0	
	3.0	3.7	
	11.0	66.5	
	8.1	12.4	
	6.7	8.0	
	4.4	2.6	







120
115
110
105
100
95
90
85
80
75
70

