

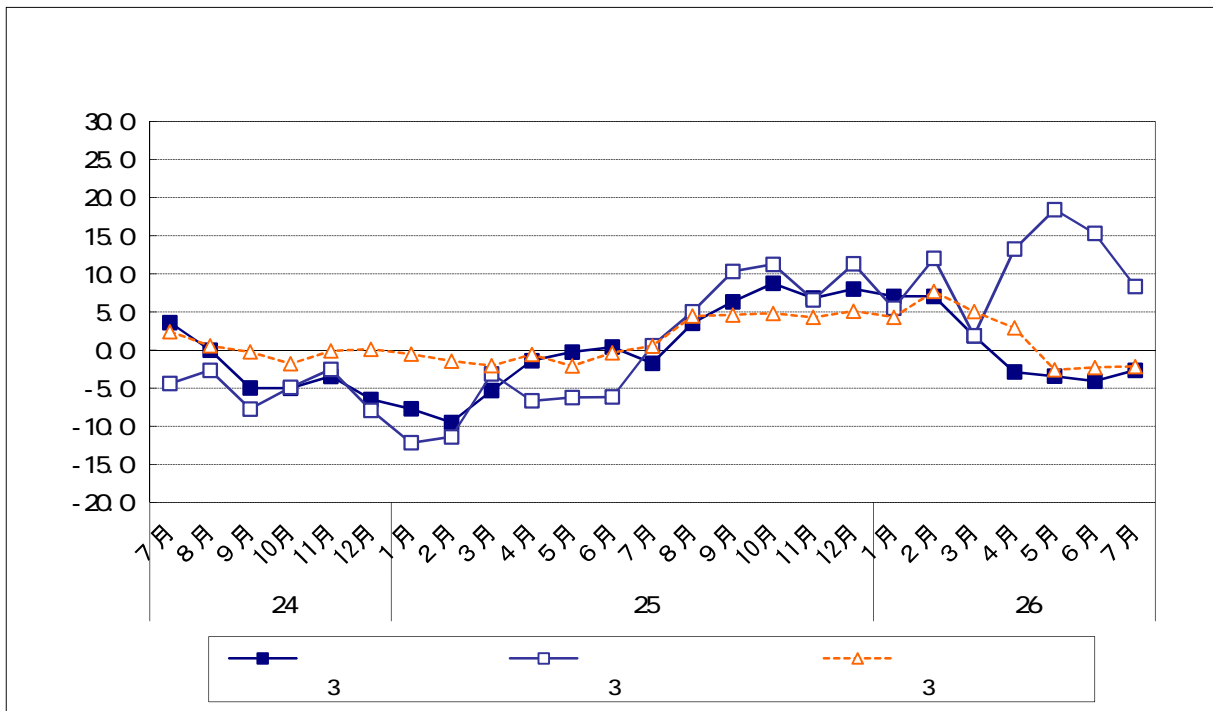


(2013)		91,710	3.5	15,386	5.0	132,065	4.5
		95,610	6.3	13,979	10.3	124,868	4.6
	10	94,474	8.8	16,666	11.2	126,750	4.8
	11	92,336	6.8	14,276	6.6	125,685	4.3
	12	101,041	8.0	14,134	11.3	169,336	5.1
(2014)		90,204	7.0	15,184	5.5	133,204	4.3
		86,766	7.1	11,852	12.0	117,665	7.7
		96,996	1.9	15,461	1.9	152,175	5.0
		94,274	2.9	15,584	13.3	114,321	2.9
		89,477	3.4	17,268	18.4	119,559	2.6
		88,907	4.1	15,710	15.3	118,357	2.3
		86,830	2.7	14,083	8.3	126,795	2.1
		84,673		15,595		126,870	

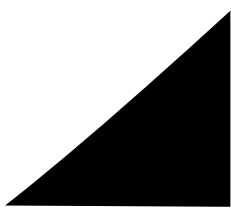
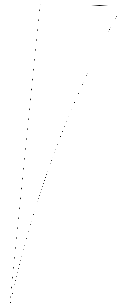
:

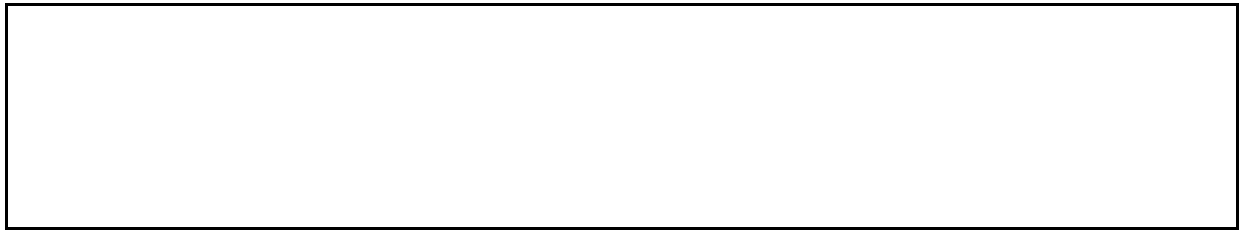
a-b

.....



20
35
()
68
05
1.1



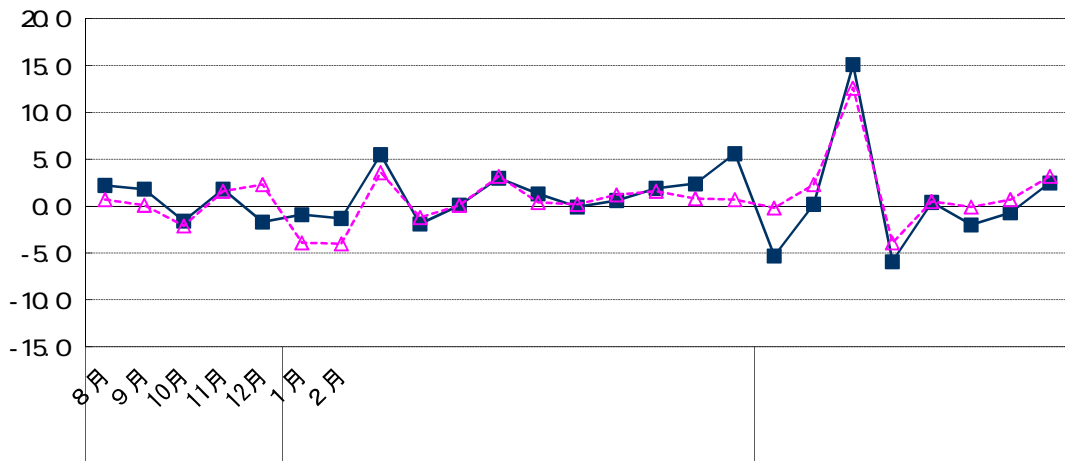


(2013)		33,732	0.1	2.5
		30,612	0.6	1.6
	10	31,902	1.9	0.4
	11	32,592	2.4	0.7
	12	42,729	5.6	3.4
(2014)		31,988	5.3	7.3
		28,892	0.2	1.8
		37,206	15.1	13.4
		29,255	5.9	7.0
		32,129	0.4	0.1
		31,821	2.0	2.2
		34,294	0.7	1.2
		34,582	2.5	1.8

(2012)		98,278	0.2
	10 12	103,600	0.6
(2013)		94,920	1.1
		95,539	0.4
	10 12	98,881	0.6
2014		107,223	3.5
		98,086	3.3
		93,205	2.5

(2011)		391,891	4.7
(2012)		390,968	0.2
(2013)		396,563	1.4

24



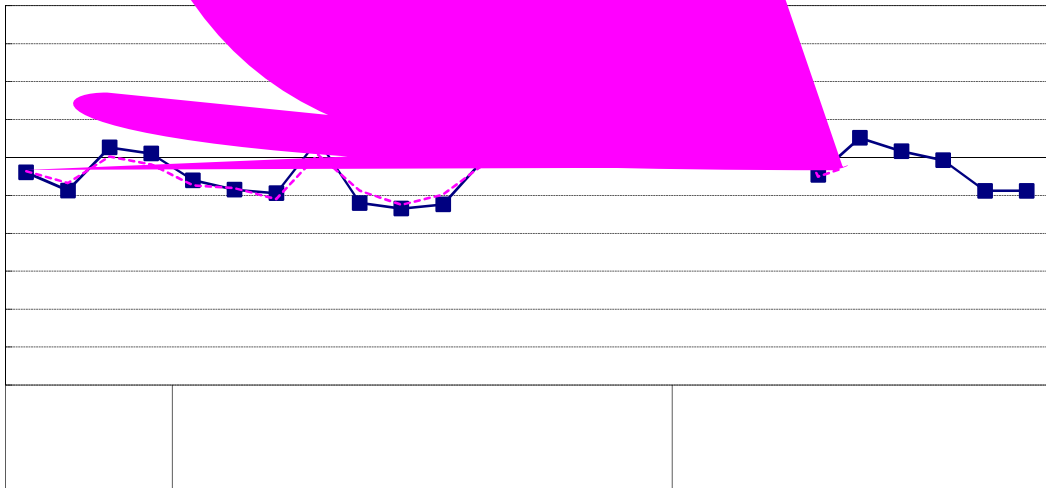
--

--

(2013)		18,357	21.7
	10	14,388	27.2
	11	15,114	17.8
	12	14,362	27.0
(2014)		17,602	29.8
		862	15.3
		3	15.8
			4.6
			5.2
			1.6
			0.7

(2013)		45,665	17.9
	10 12	35,447	1.8
		52,824	8.3
(2014)		38,266	8.0
	10 12	46,693	2.3
(2015)		43,864	23.7
		62,977	19.2
		38,538	0.7
		43,848	6.1

)	138,860	16.9
)	180,279	29.8
		181,647	0.8







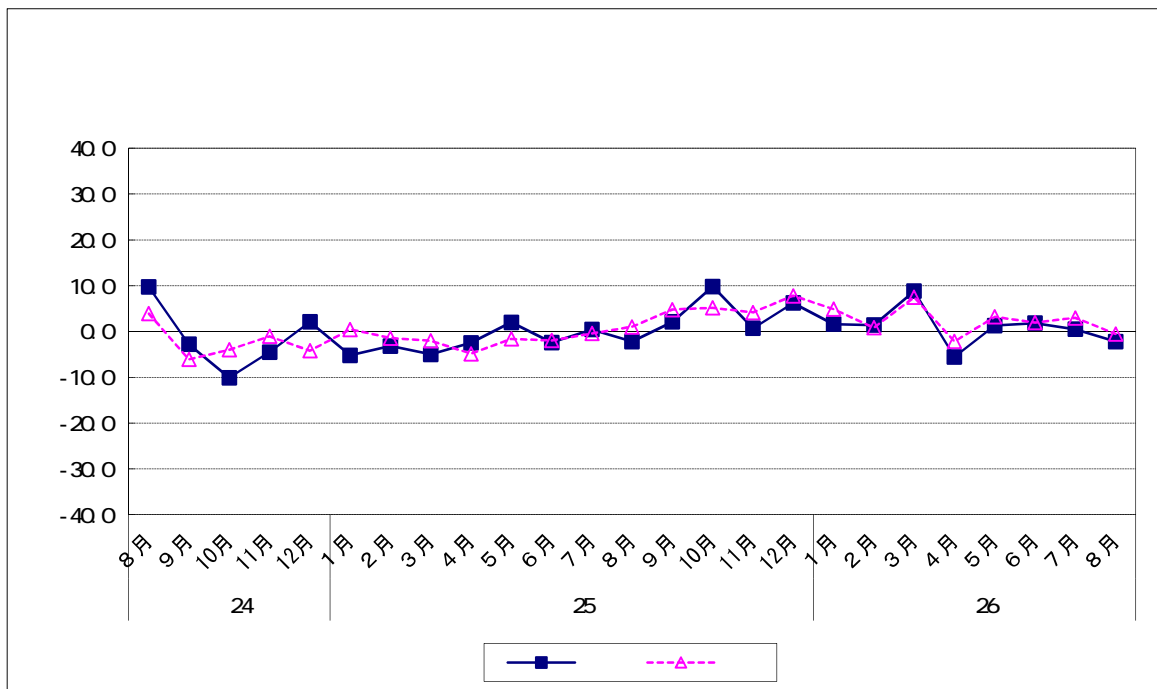
(2013)		13,547	2.2	9,237	0.6	4,311	7.8
		11,993	2.1	8,244	7.2	3,749	7.6
	10	14,520	9.8	9,981	8.9	4,539	11.7
	11	13,328	0.7	9,639	1.5	3,689	1.2
	12	13,297	6.2	9,035	2.5	4,262	15.0
(2014)		10,306	1.6	7,944	0.0	2,362	7.6
		10,671	1.4	7,529	0.7	3,142	3.1
		12,951	8.8	9,088	9.6	3,863	6.9
		8,600	5.6	6,038	2.1	2,561	12.8
		11,128	1.3	7,945	4.8	3,183	6.4
		9,979	1.8	6,701	4.6	3,278	3.5
		11,490	0.5	8,200	1.1	3,290	4.9
		13,243	2.2	9,132	1.1	4,110	4.6

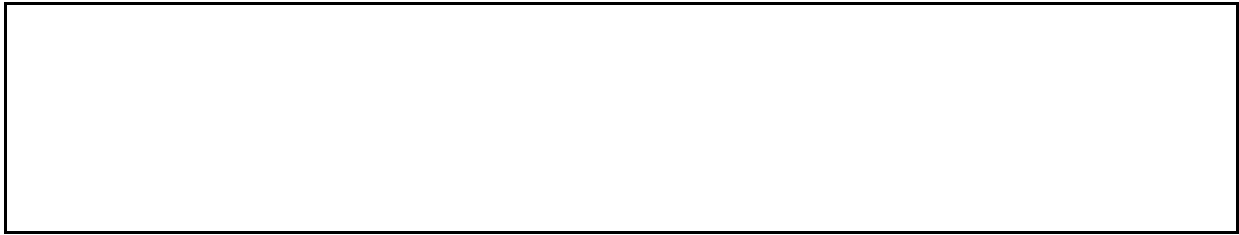
24

58

25

50





(2013)		3,670	1.4
		3,704	31.7
	10	4,244	32.3
	11	4,871	48.1
(2014)	12	5,180	40.5
		5,003	12.7
		4,185	21.5
		5,279	23.9
		4,318	16.3
		3,975	11.2
		4,113	2.2
		4,417	10.4
	3,808	3.8	

(2012)		2,863	21.9
		3,129	19.2
(2013)	10 12	3,395	12.1
		4,048	46.0
		3,771	31.7
2014		3,791	21.2
	10 12	4,765	40.4
		4,822	19.1
		4,135	9.7

(2011)		2,603	1.6
(2012)		3,040	16.8
(2013)		4,094	34.7

資料出所:総務省「家計消費状況調査」
支出額:1ヶ月・1世帯あたり支出額(二人以上世帯)

