

32

2-1-1

2-1-1

1

3

1

2

3

8 6

3

2-1-2

22

1

3

1

3

2-1-3

2-1-2

14

19

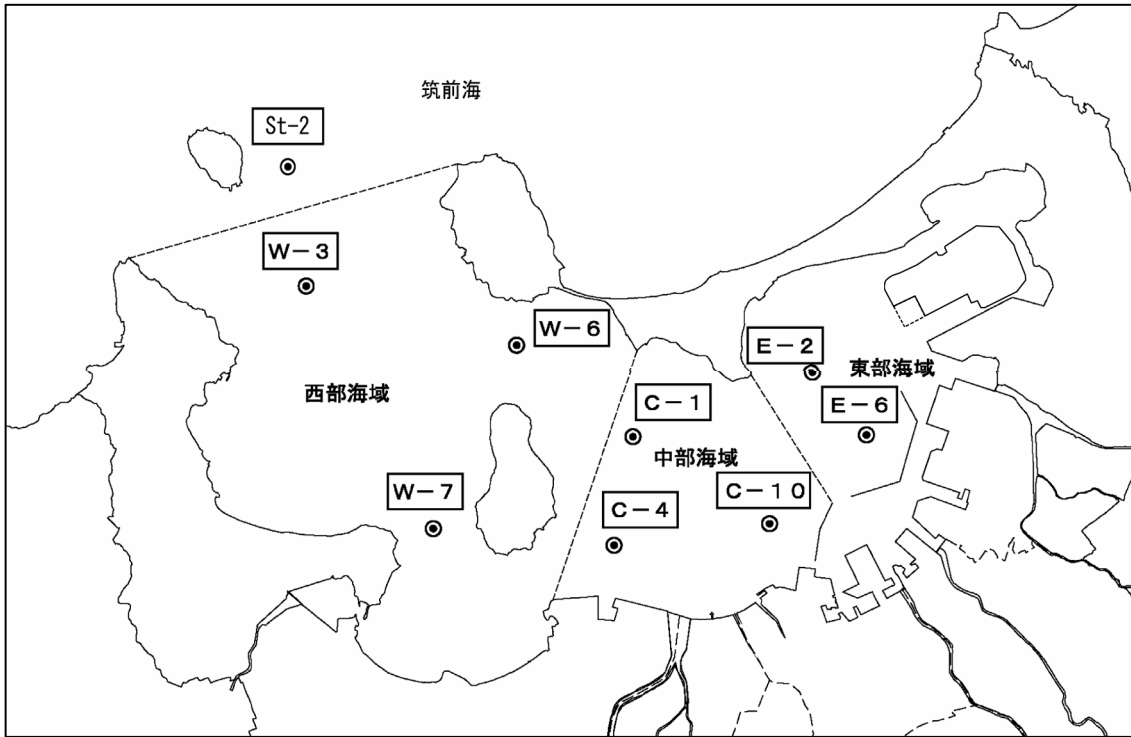
18

19

22

8

2-1-3



2-1-1

2-1-1

							n-	
			7.8 8.3	2ng/l	7.5ng/l	1,000PPM /100h		52 5 13 651 2
			7.8 8.3	3ng/l	5ng/l			8 6 14
			7.8 8.3	2ng/l	7.5ng/l	1,000PPM /100h		1141
			7.8 8.3	2ng/l	7.5ng/l	1,000PPM /100h		
			5			5		

2-1-2

			0.6ng/l	0.05ng/l	8 6 14
			0.6ng/l	0.05ng/l	1141
			0.3ng/l	0.03ng/l	

2-1-3

23 3 31

						1	
	(1)					2	8 6 14
	(2)					3	
						4	
	(1)					5	1142 (591)
	(2)					6	
						7	
						8	
						9	
						10	
						11	8
						12	6 14
						13	
						14	1141
						15	(47.25)
						16	
						17	
						18	
						19	

8 6
8 6

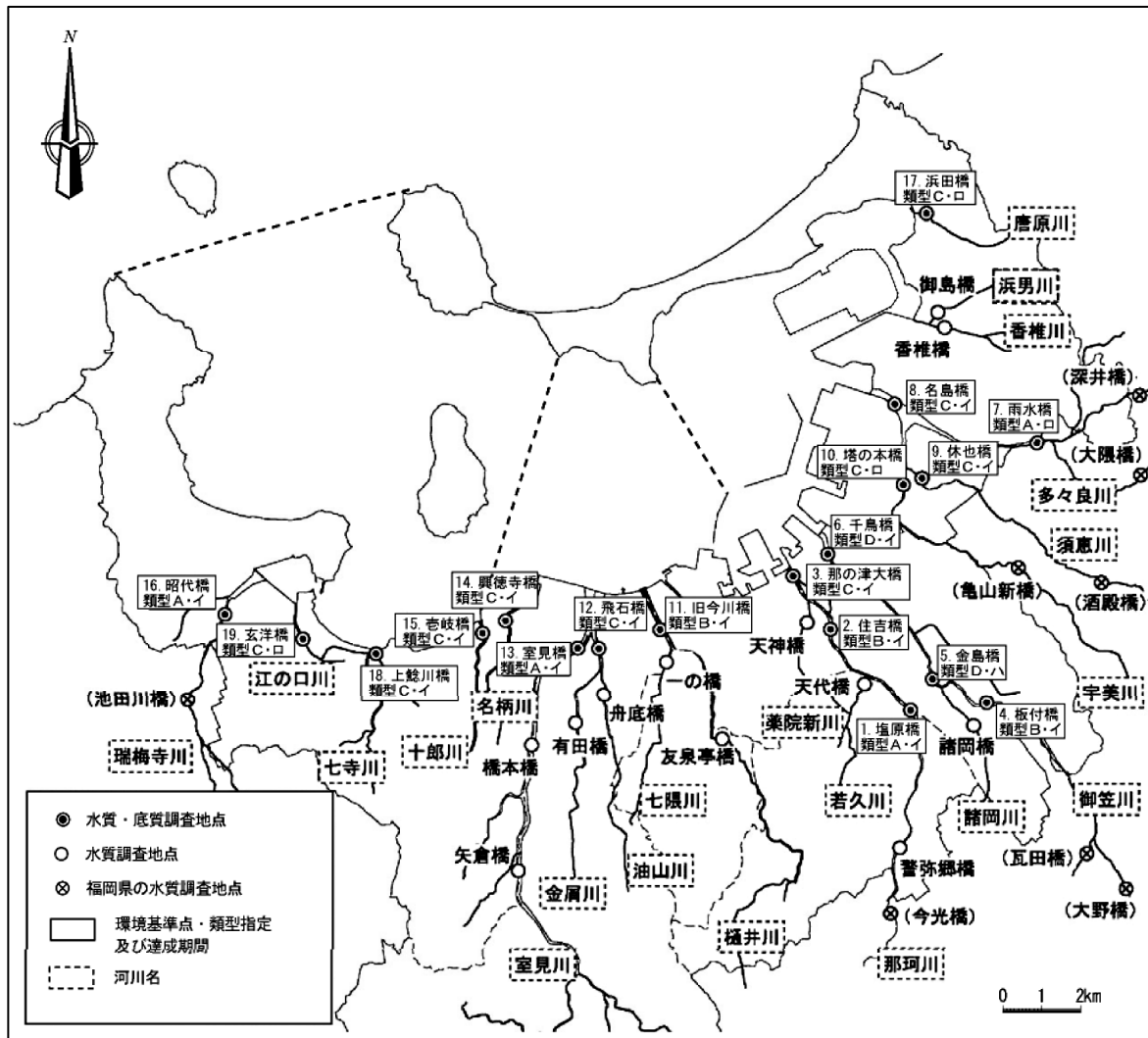
(1)

(2)

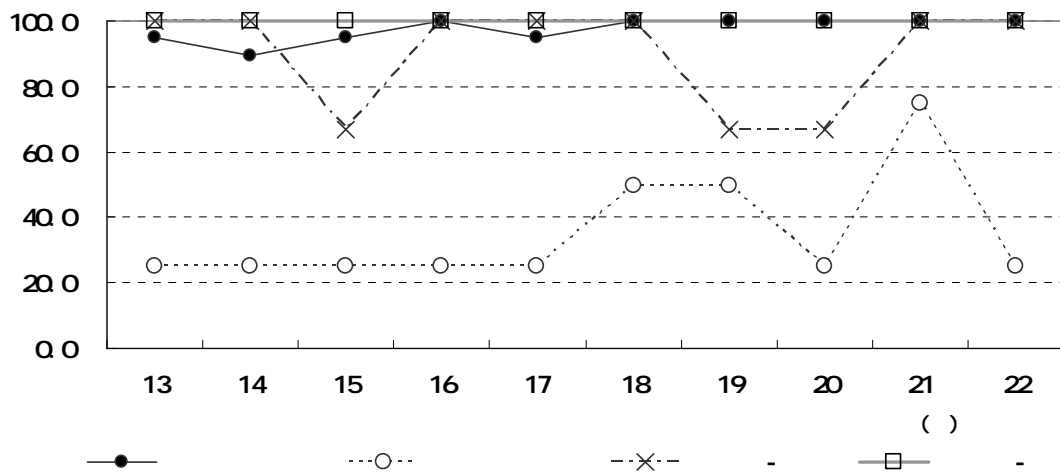
(2)

5

5



2-1-2



2-1-3

20km

10km

13k

10 20

5

10 5

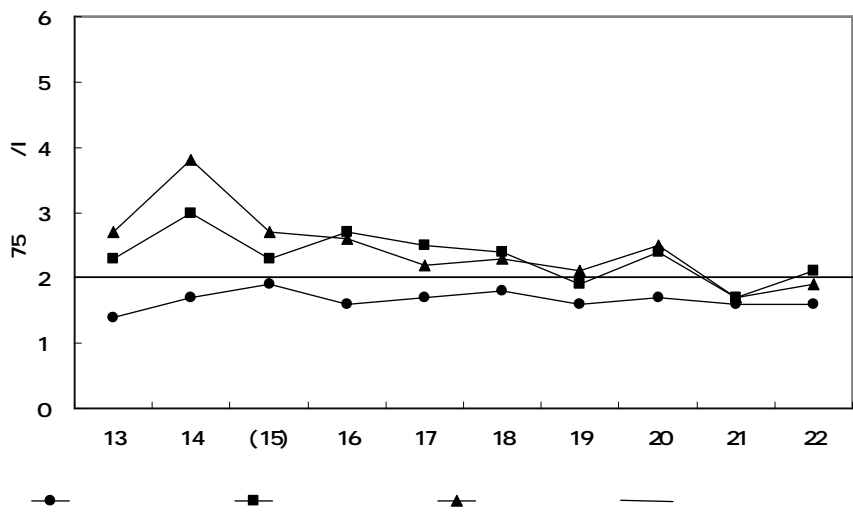
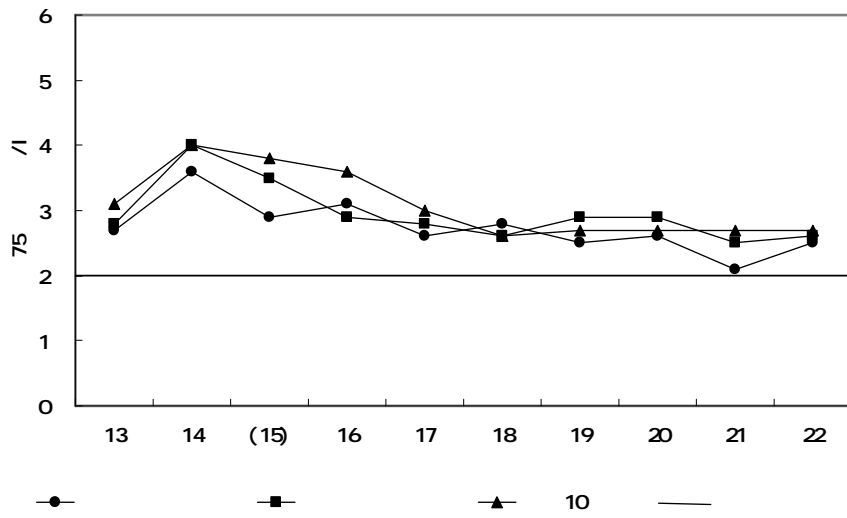
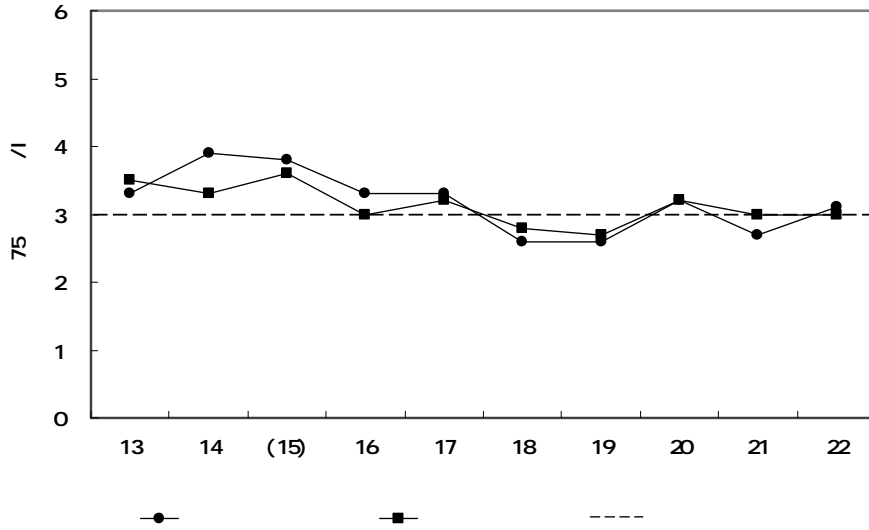
5 10



2-1-4

2-1-5

2-1-4

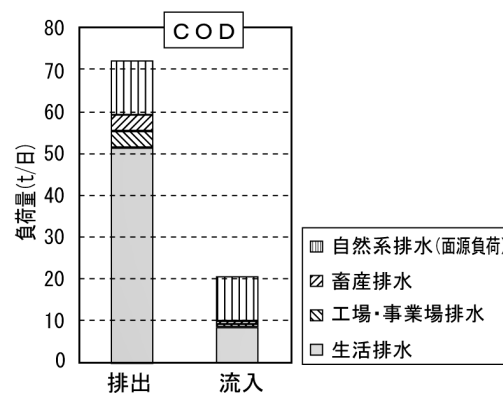


2-1-5

2-1-4

	H13	H14	H15	H16	H17	H18	H19	H20	H21	H22
	4	6	5	4	4	3	9	4	4	6
	44	121	102	167	41	64	93	39	97	74

21

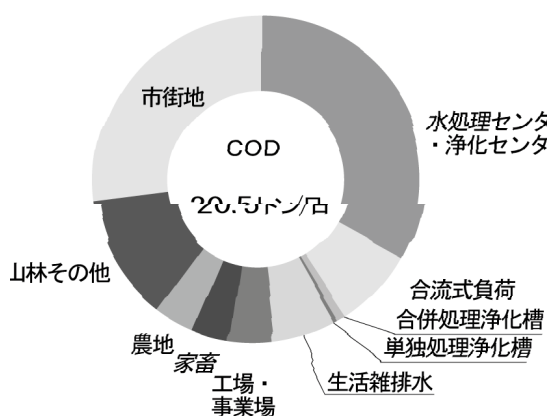


5
2

2-1-6

14

2-1-7

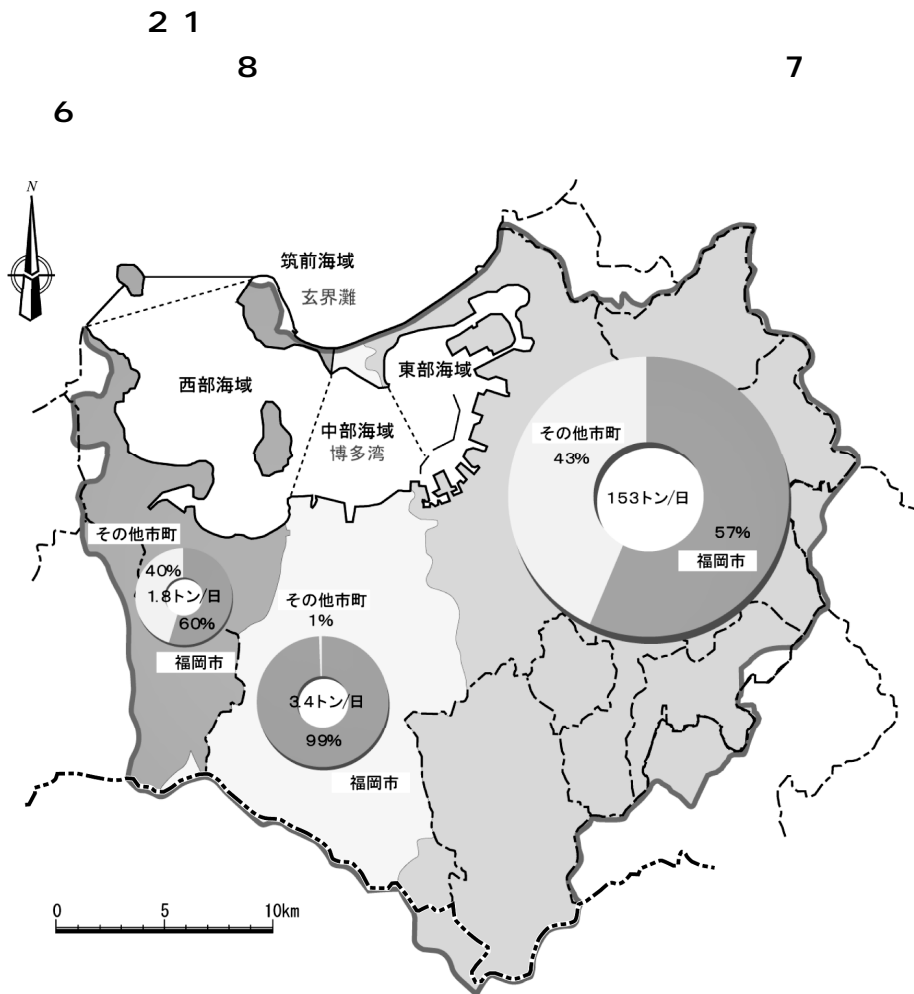


2-1-7



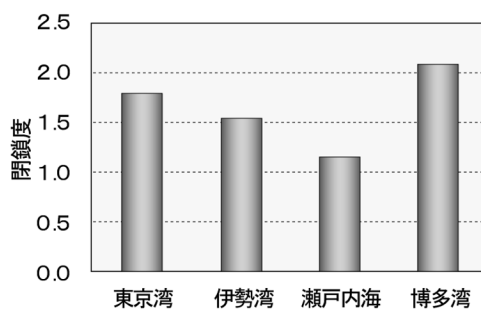
14

2-1-8



2-1-8

14



2-1-9

2-1-10

※閉鎖度の算出法

$$\text{閉鎖度} = \frac{\sqrt{S \cdot D_1}}{W \cdot D_2}$$

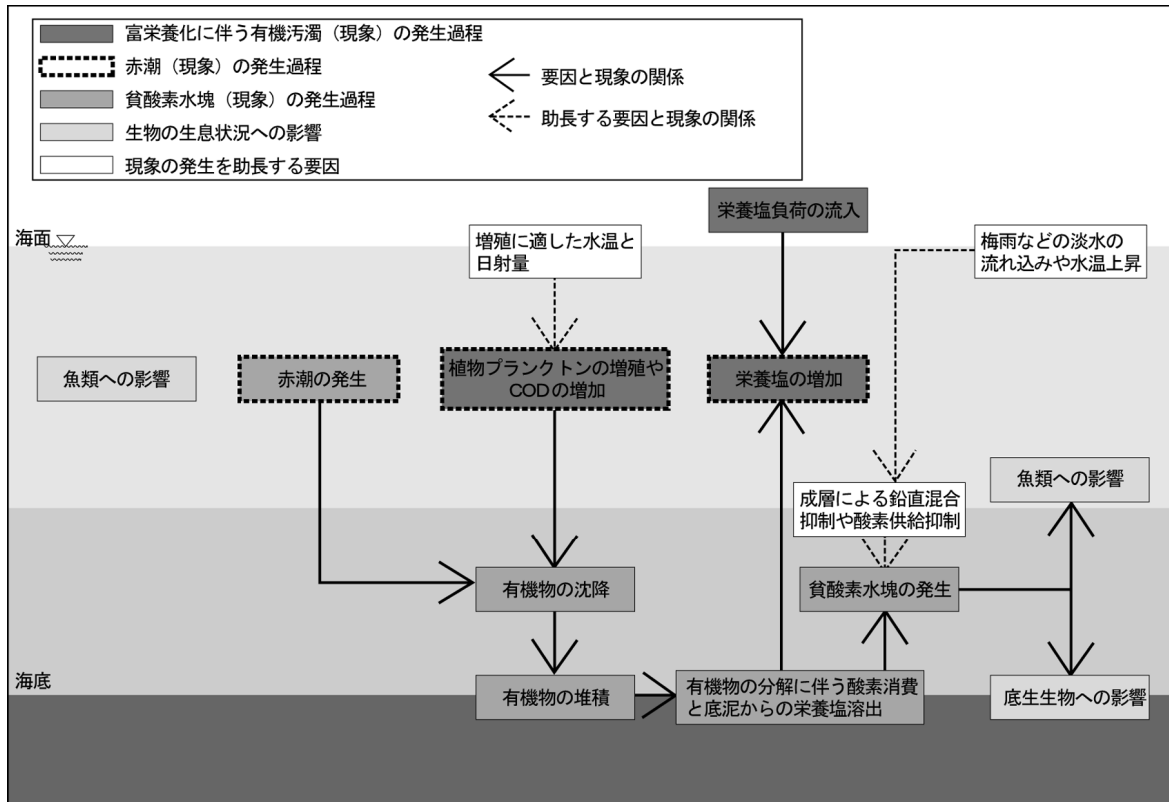
S : 当該海域の面積 (km²)

W : 当該海域と他の海域との境界線の長さ (km)

D₁ : 当該海域の最深部の水深 (m)

D₂ : 当該海域と他の海域との境界における最深部の水深 (m)

2-1-9



2-1-10

20 1

17

21

2-1-11

2-1-5

97.7

5 1 50
 5 46 59
 6 7 6
 12
 60 5 5
 22
 99.5%



注) 糸島市の公共下水道排水 は、加布里湾へ流入している。

2-1-11

17

2-1-5

21

		()	()		
		1,454,062	1,446,900	99.5	
那珂川 御笠川・ 流域 関連		100,383	86,409	86.1	
		108,927	108,927	100.0	
		94,975	94,882	99.9	
		69,297	67,964	98.1	
		49,591	47,283	95.3	
		423,173	405,465	95.8	
多々良川 流域 関連		37,868	32,373	85.5	
		31,656	30,297	95.7	
		43,013	42,725	99.3	
		26,014	14,150	54.4	
		8,394	6,961	82.9	
		42,267	41,031	97.1	
		189,212	167,537	88.5	
		2,009,174	1,962,702	97.7	

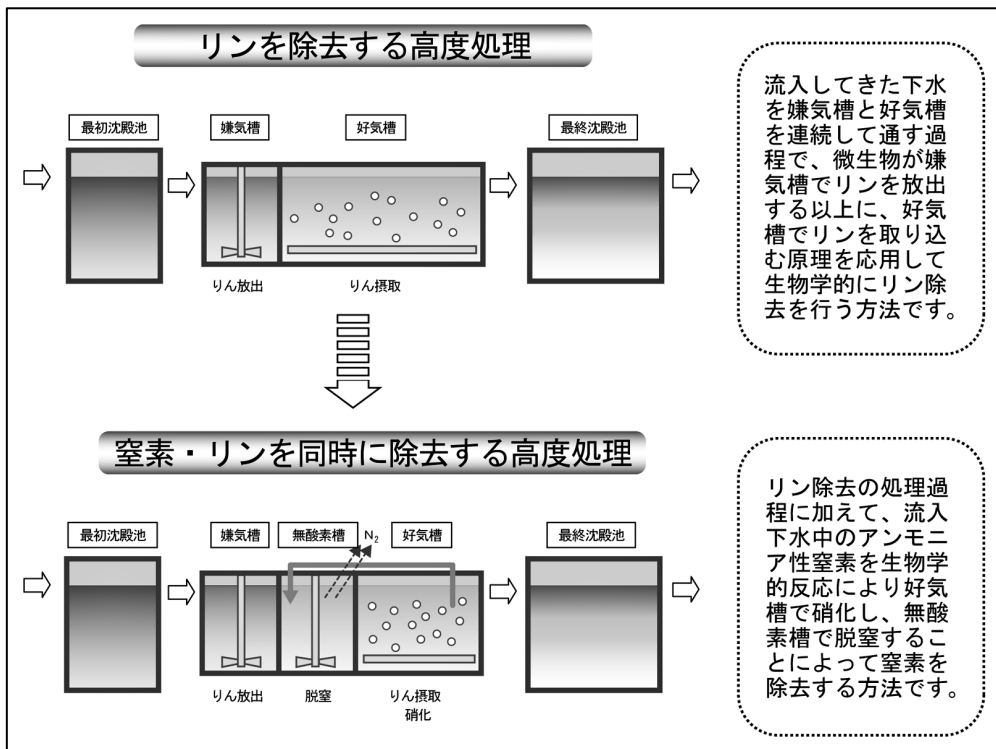
22 3

2-1-6

22

					(m ³ /)	()
		S56 7. 1			6,500 13,000	7,654 9,600
		S50 1. 1			45,800 61,750	84,863 94,000
		S50 4. 1	1		145,300 195,300	249,515 235,000
		S41. 7. 1			300,000 300,000	340,414 277,000
		S55 12 24	(1)		184,300 312,200	482,839 525,200
		S50 5. 1			336,800 283,600	(296,715 292,290
		H 6 7. 2			62,400 67,100	(170,957 174,000

	<p>10ng/l 9ng/l 0.4ng/l</p>	<p>8ng/l 9ng/l 0.4ng/l</p>
	<p>⋮ ⋮ ⋮ ⋮ ⋮</p>	<p>MAP MAP MAP</p>
	<p>(1) 21 (2)</p>	



2-1-12

100ha
22

237ha

2-1-9

	128.5 ha(5.2%)	2,000	5.4
	698.9 ha(28.0%)	35,000	13.4
	827.4 ha(33.2%)	37,000	
2,494 ha 100			

10.4

1

22
2-1-10

641

2-1-10

22

	22	
	641	100.0
	537	83.8
	451	70.4

2-1-11

5

3.3

2-1-11

22

	293 (4)
50m ²	24 (3)
50m ²	269 (1)
	32
	1
	0

22 15

3,556

2-1-12

2-1-12

19

農 業			490	10 8 1
			410	10 8 1
			410	11 8 1
			1,310	13 8 1
			160	16 4 1
漁 業			600	60 6 1
			840	11 8 1

21 2

3

25

2-1-13

2-1-13				22		
				22	22	
		55 6	7,200	5,280 6,800	376	1,013ha
		15 7	1,600	120 530		401ha

20 17 19
 40ha 21 130ha

22 40ha

9

9 10 11 17 4

15 6ha

14

20 0 7ha 21 0 42ha 22

0 39ha

2-1-14

		9 10 11 17		15 6ha
		15 19		120ha
		14 22		5 9ha

2-1-15

2-1-15

22

		340 22

22

19

1,630

213

2,000

2-1-16

2-1-16

22

		2,650 (17 21
		240 (21 22

22

9

1

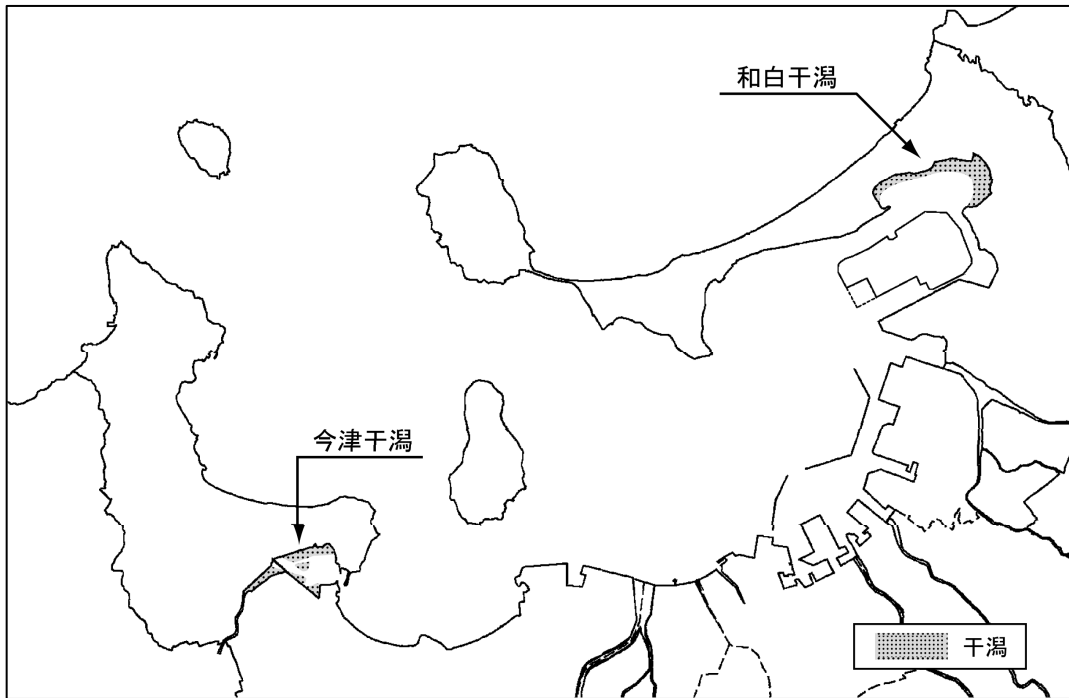
22

7

22

2

2-1-13



2-1-13

22
8,850

2-1-17	9	22
	550	
	410	
	660	
	280	
	1,300	
	600	
		3,750
	600	
	700	
	8,850	

21

21

21

22

5

10

2-1-14

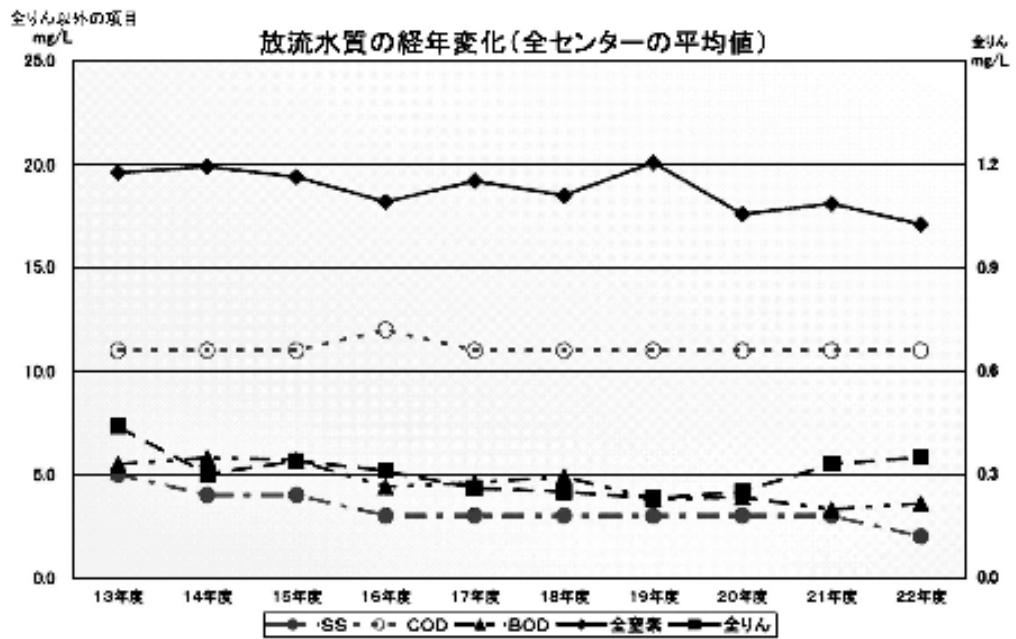
59

95.8

60

88.5

99.5%



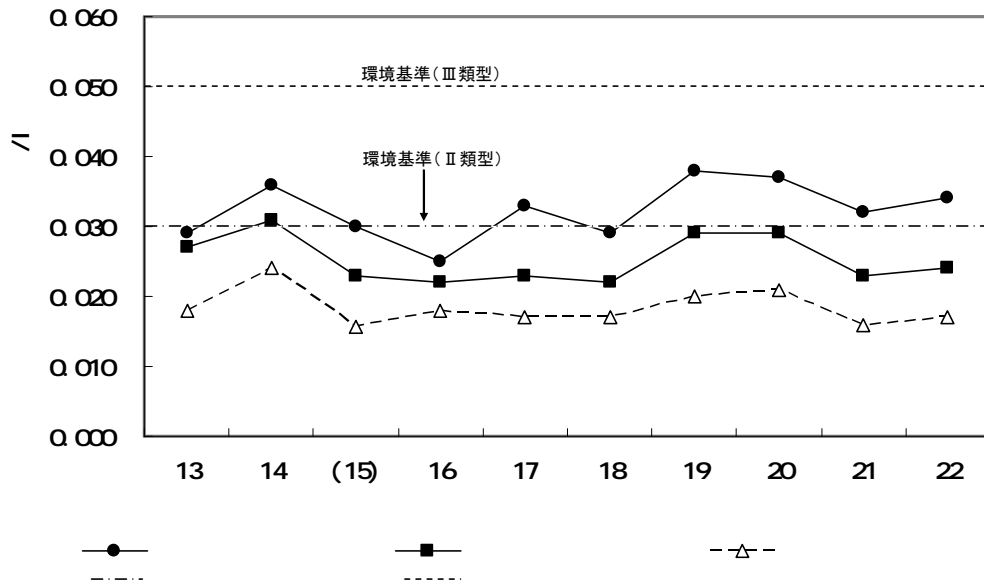
2-1-14

5

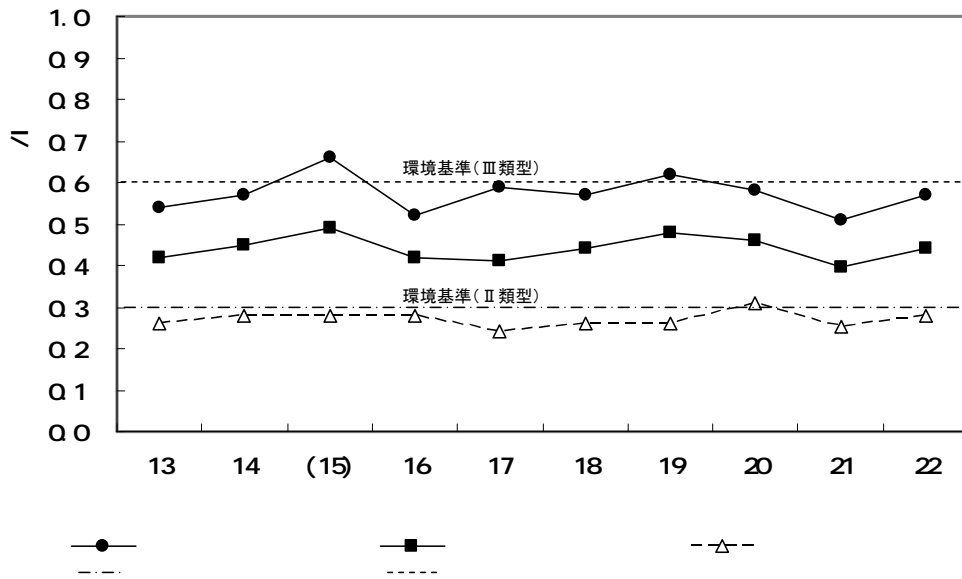
2-1-15

2-1-16

21



2-1-15



2-1-16

16

21

15

29

3 Ong/l

2 Ong/l

99.5%

22

99.9%

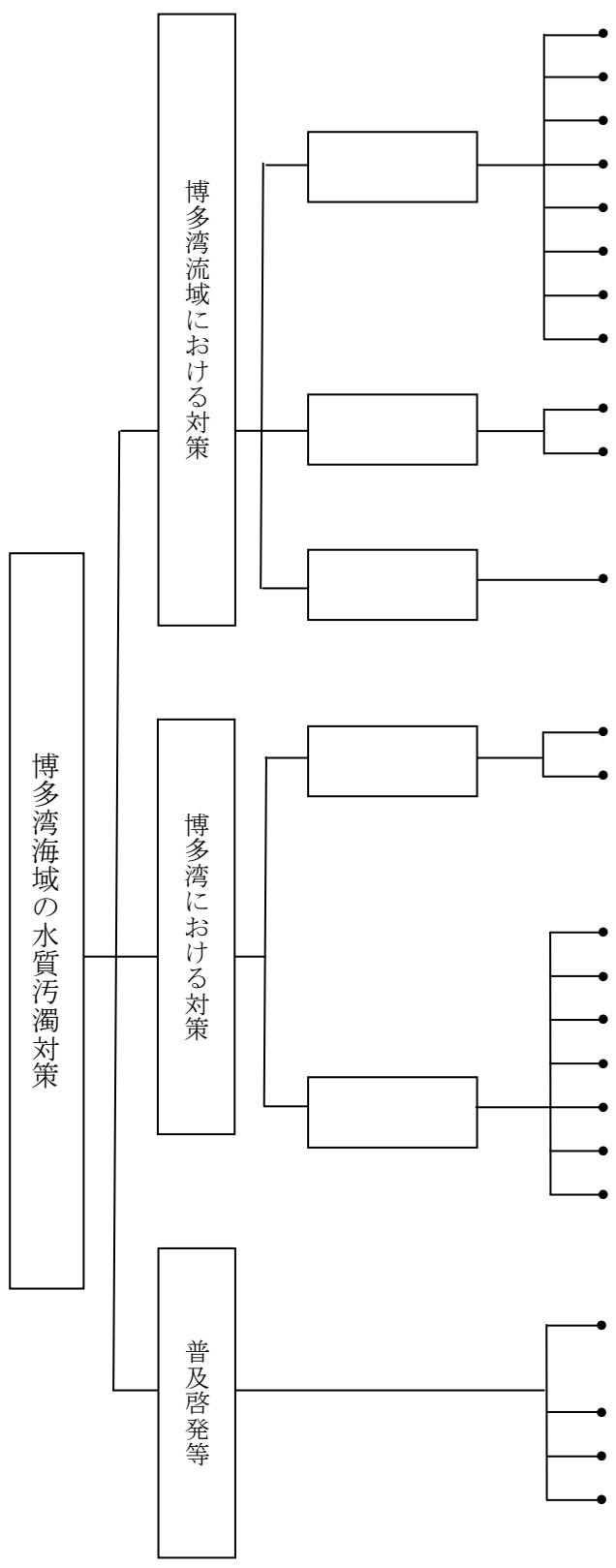
32

17 19

1

2

1
2



2-1-17

7

18

7

27 2015

1		
2		21
3		
4		

"

"

18 7

20 1

37

4

1		
2		
3		
4		
5		

"

"

	∞

27

7

--	--

27

	10ng/l	8ng/l
	9ng/l	9ng/l
	0.4ng/l	0.4ng/l

21

27

6

15 3

5

19 9

3

37

	<i>27</i>	<i>37</i>
	<i>90</i>	<i>97</i>
	<i>80</i>	<i>93</i>