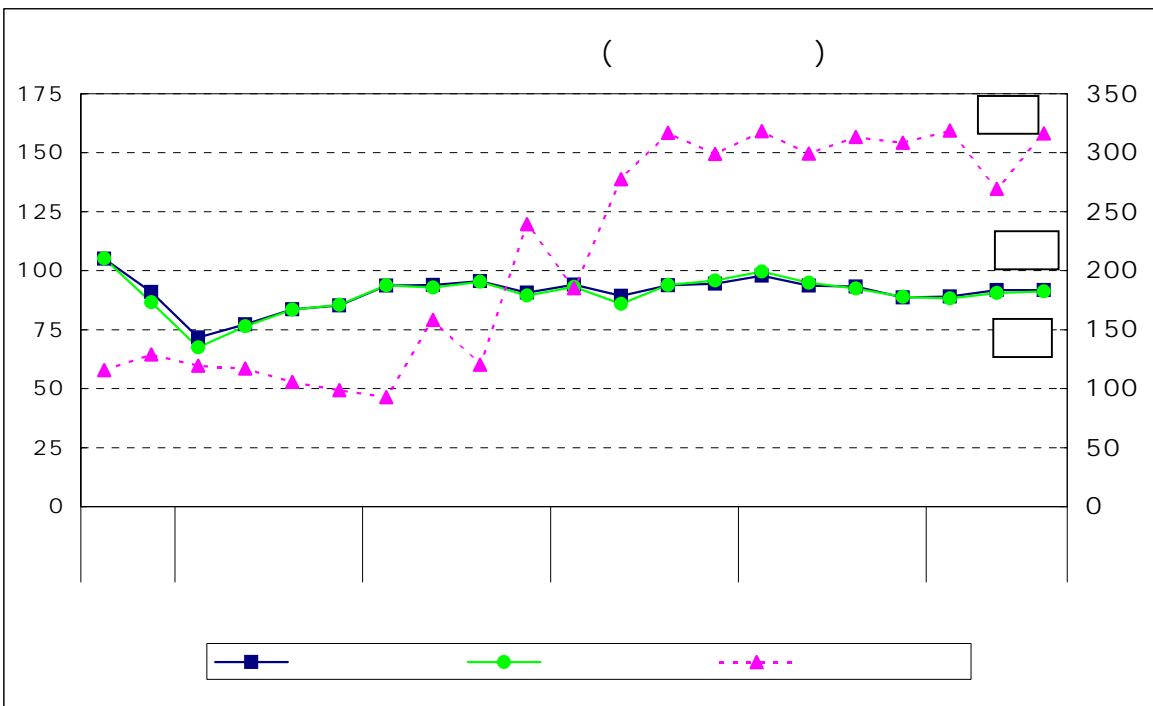


2

%

17 100

	7 9	93.3	0.4	92.5	2.5	313.5	4.8
		88.7	4.9	88.9	3.9	308.4	1.6
		89.1	0.5	88.3	0.7	318.9	3.4
	4 6	91.8	3.0	90.6	2.6	269.6	15.5
		91.8	0.0	91.2	0.7	316.4	17.4
	7 9	95.8	0.6	95.8	1.6	295.2	1.1
		92.0	6.1	92.8	7.2	294.2	3.2
		86.5	8.9	84.7	11.4	290.5	0.2
	4 6	88.7	1.9	87.0	4.4	292.4	9.9
		94.4	1.5	94.5	1.4	297.9	0.9



1	.	.
2	.	.
3	.	.

9

	8.0	0.5	
	1.2	8.8	
	17.8	1.6	
	0.5	0.1	
	10.8	18.7	
	11.4	0.7	
	3.7	10.6	
	2.4	5.9	
	3.2	4.5	
	4.0	0.3	

	5.5	1.0	
	0.4	17.3	
	11.2	1.6	
	0.5	4.0	
	5.5	33.3	
	12.5	1.0	
	0.2	8.0	()
	9.9	3.8	
	1.2	10.6	
	5.2	1.2	

	1.5	10.2	
	0.6	23.1	
	0.2	17.2	()
	4.5	7.8	
	100.0		
	21.7	2.7	
	1.8	30.7	
	6.8	4.8	A
	5.0	2.9	
	9.1	0.9	

