

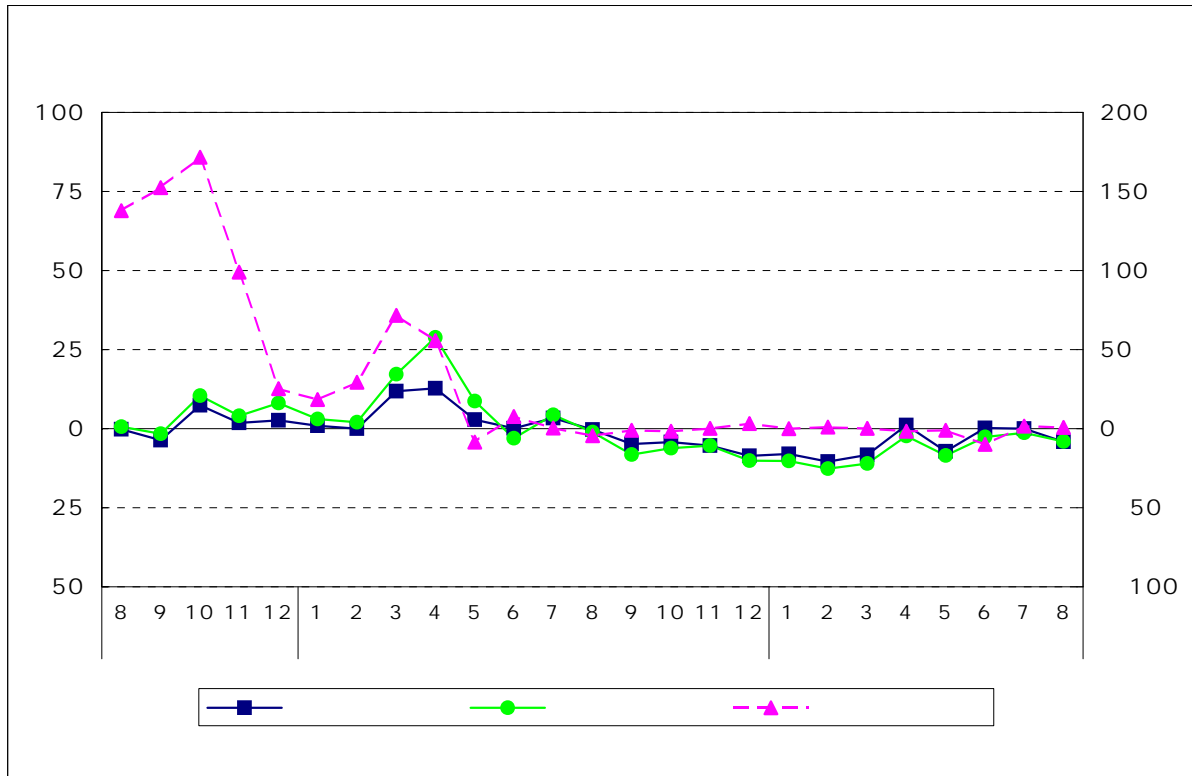
18 18 18

17 100

22 100

		90.8	7.0	87.3	4.2
		90.5	6.9	86.0	4.0
		290.1	3.3	301.2	0.9
		97.5	2.0	94.9	3.3
		100.5	0.8	97.4	0.9
		112.5	1.7	113.6	5.2
		97.0	0.9	92.3	0.4
		95.5	0.1	91.3	1.3
		108.5	0.2	109.7	3.3

--	--



17 100

	4 6	93.7	4.3	94.9	4.7	299.2	6.0
	7 9	93.3	0.4	92.5	2.5	313.5	4.8
		88.7	4.9	88.9	3.9	308.4	1.6
		89.1	0.5	88.3	0.7	318.9	3.4
	4 6	91.8	3.0	90.6	2.6	269.6	15.5
	4 6	90.4	4.9	91.0	9.9	324.5	7.7
	7 9	95.8	0.6	95.8	1.6	295.2	1.1
		92.0	6.1	92.8	7.2	294.2	3.2
		86.5	8.9	84.7	11.4	290.5	0.2
	4 6	88.7	1.9	87.0	4.4	292.4	9.9

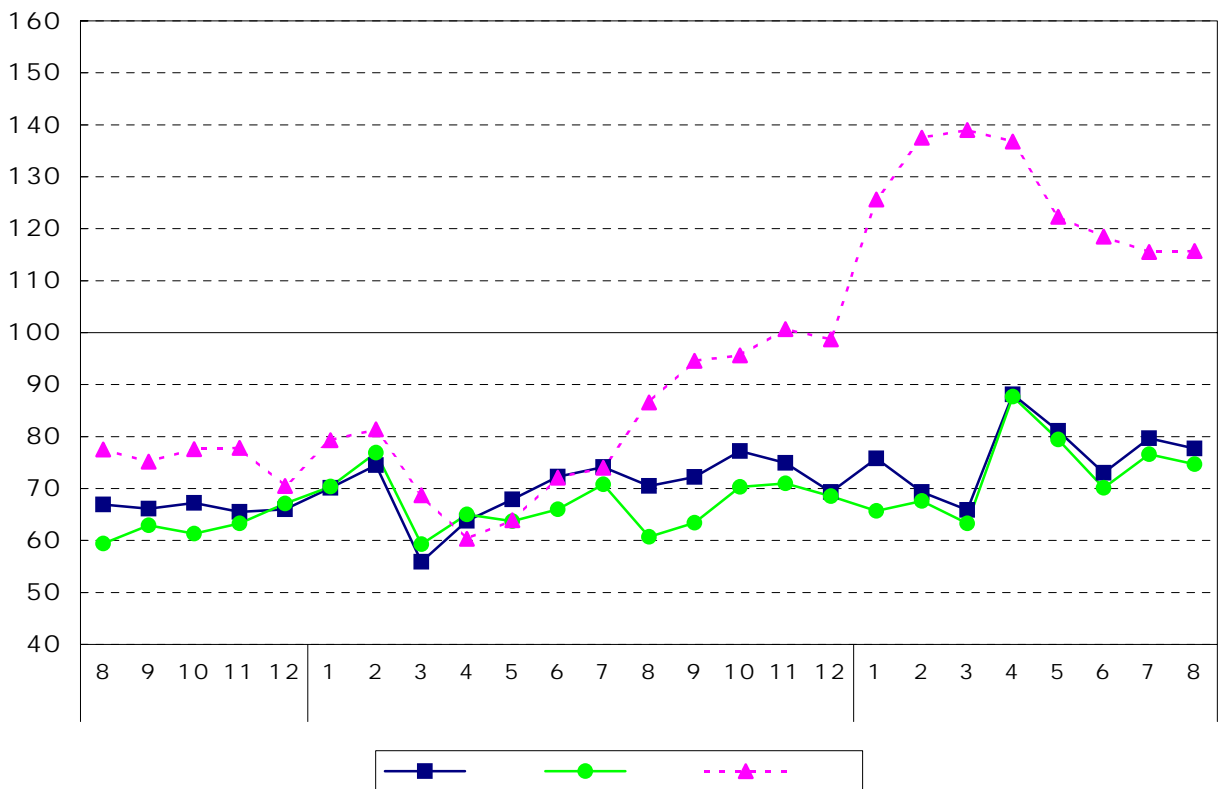
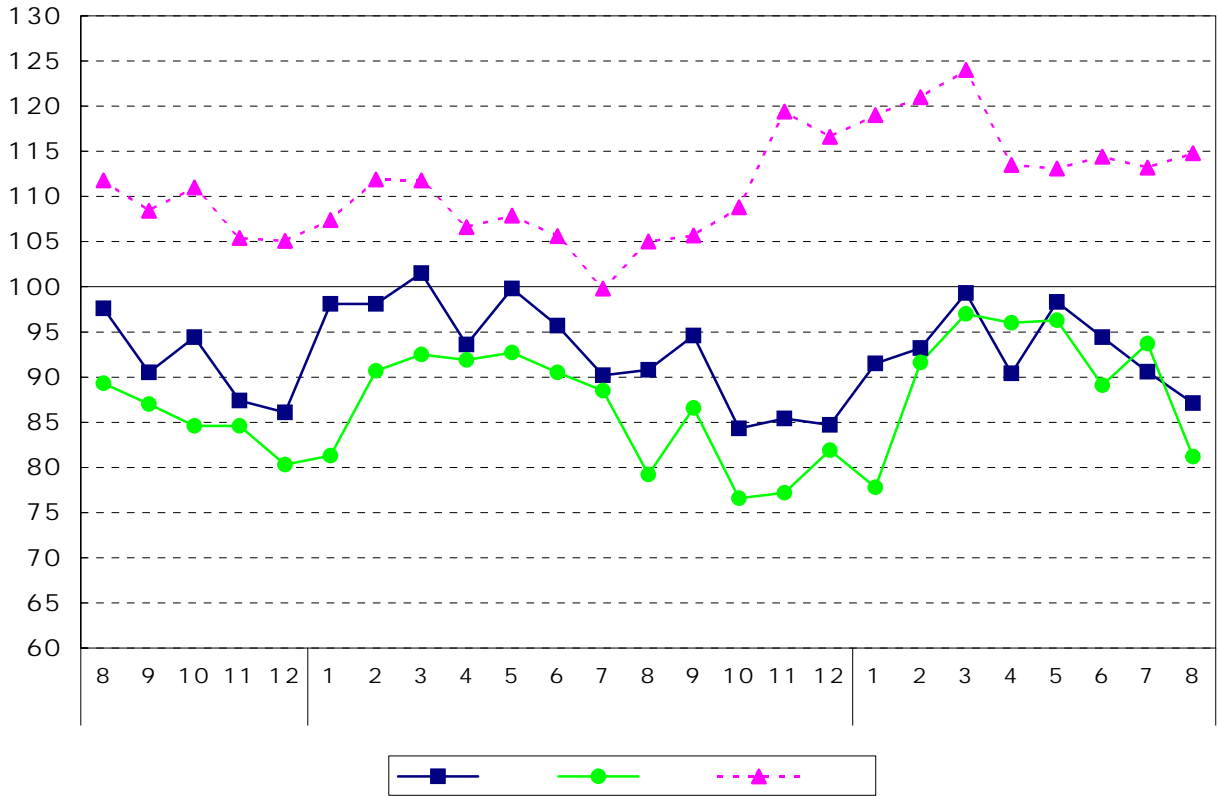
1	.	.
2	.	.
3	.	.

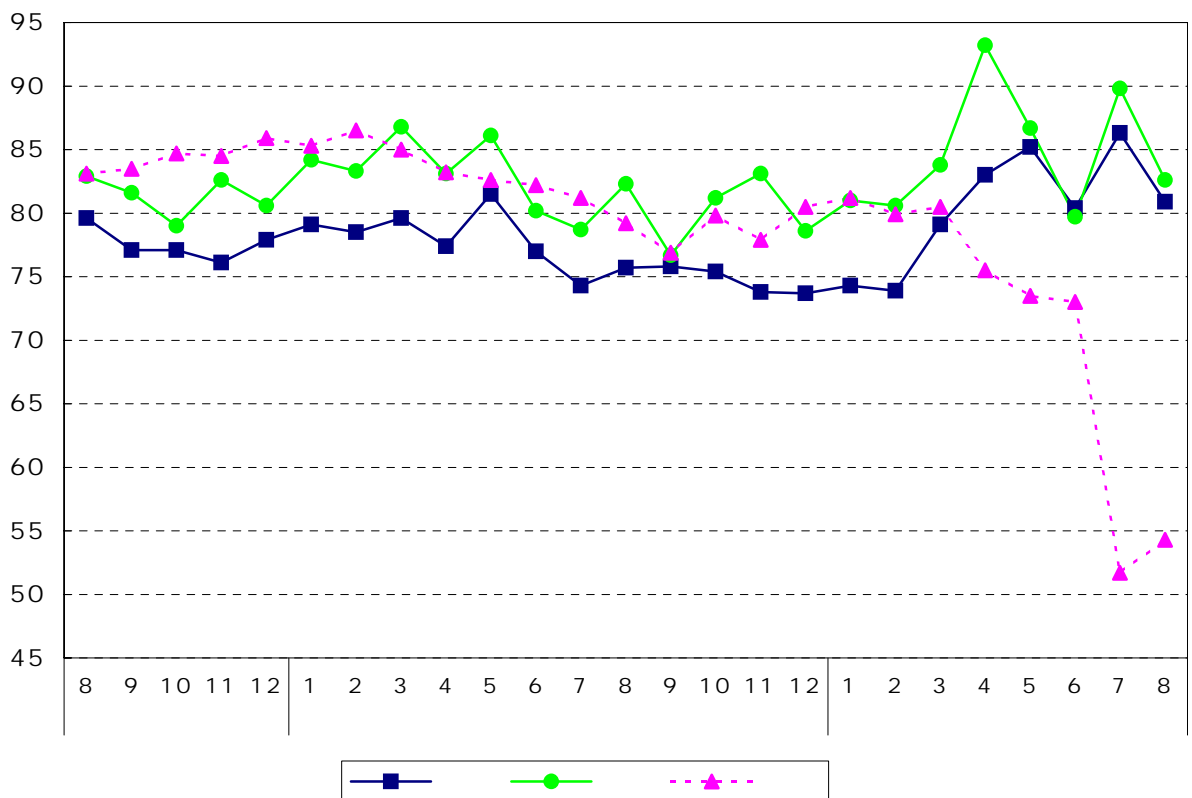
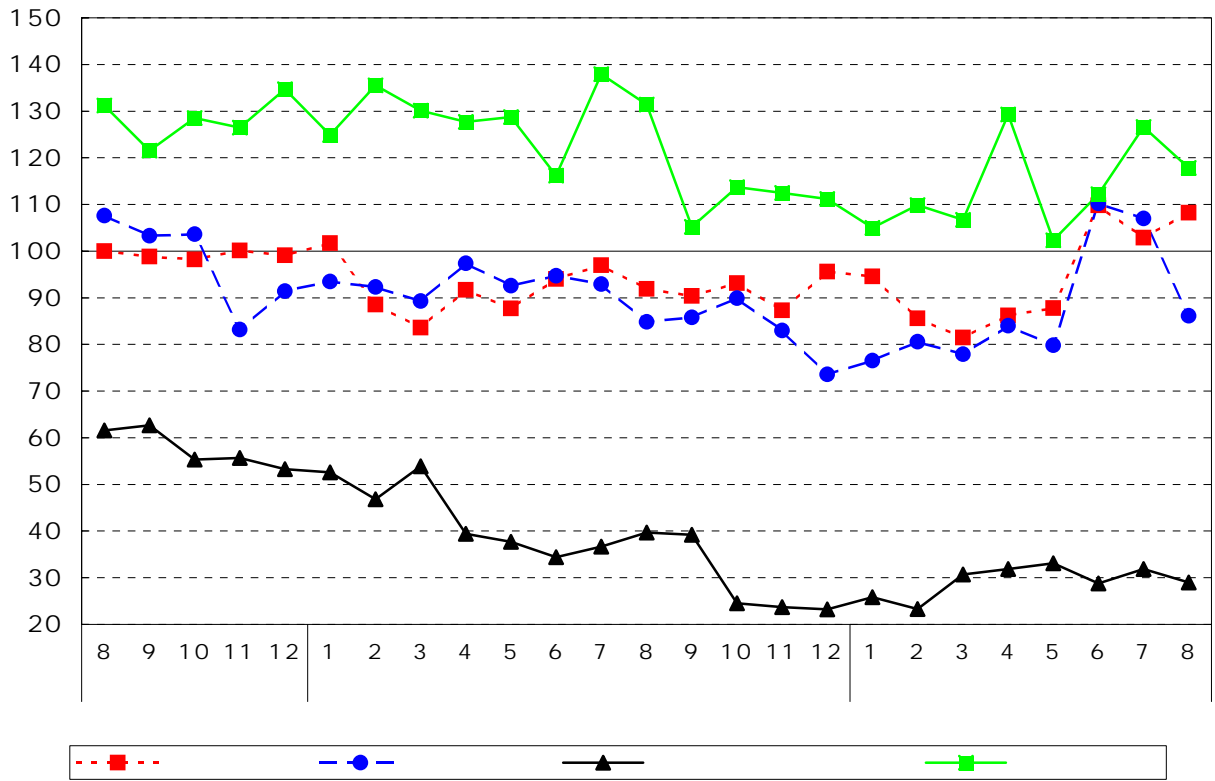
9

	3.9	4.1	
	2.5	10.1	
	5.2	17.8	
	19.5	1.5	
	9.1	26.9	
	7.0	10.3	
	6.3	7.0	
	15.6	12.2	
	0.5	4.6	
	7.0	4.2	

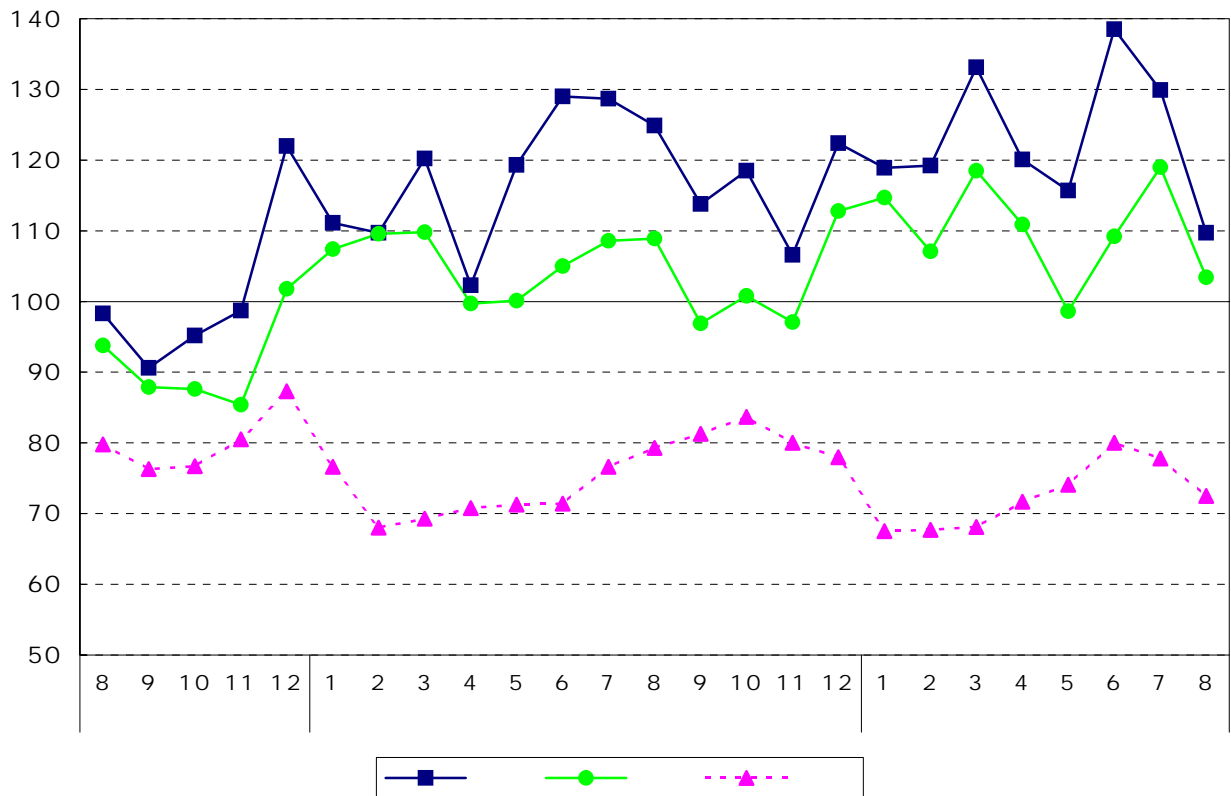
	13.3	2.4	
	2.5	23.1	
	1.4	16.0	
	17.1	2.9	
	6.9	38.5	
	5.1	10.2	
	8.0	0.4	
	13.1	5.1	A
	0.0	4.6	
	6.9	4.0	

	1.4	9.3	
	0.2	33.6	
	10.4	20.2	()
	0.2	22.8	
	1.8	73.9	
	9.5	3.1	
	5.0	31.4	
	6.8	8.5	
	0.3	4.8	
	3.3	0.9	





17 100



17 100

