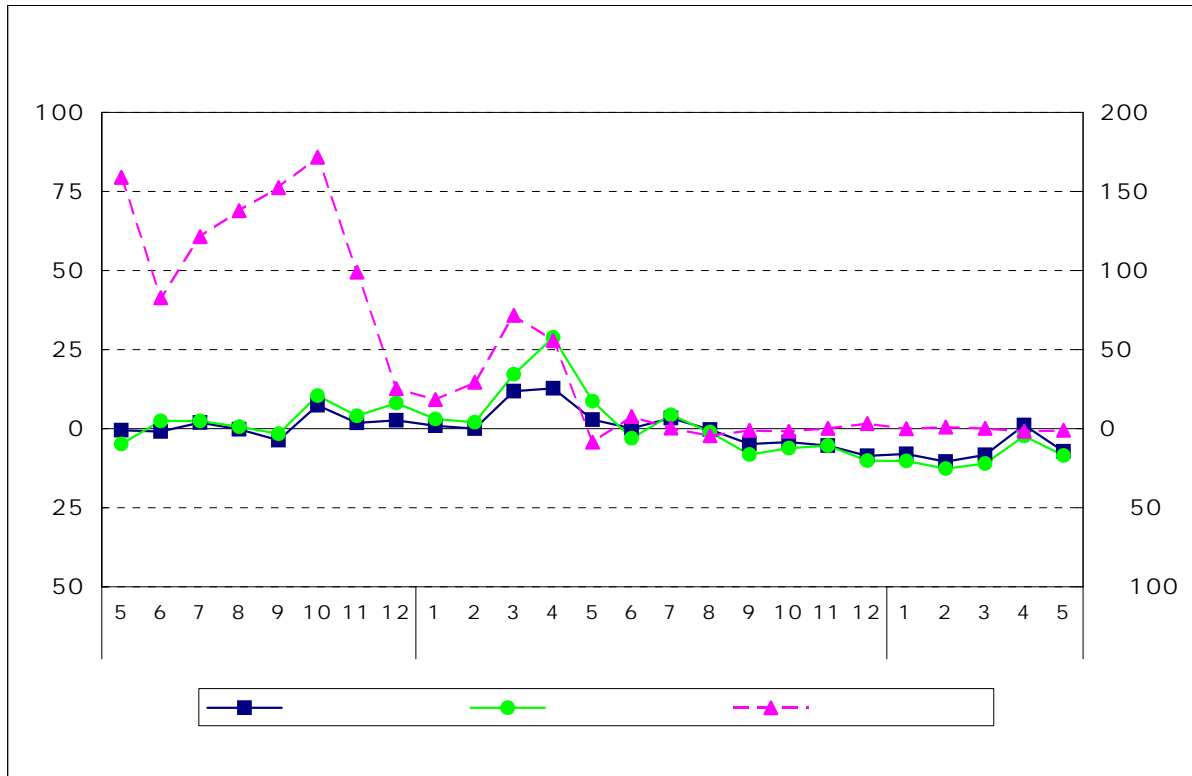


18					
18					
18					

17 100

22 100

		88.2	6.3	81.6	7.2
		88.3	6.5	79.6	8.5
		278.6	9.4	290.1	1.1
		101.2	3.9	96.4	3.2
		98.9	4.9	93.8	5.4
		126.3	1.6	124.6	7.2
		97.7	1.9	93.0	1.1
		96.8	1.0	91.7	2.1
		107.0	0.4	106.3	2.7



17 100

		97.9	3.6	99.6	3.9	318.3	6.5
	4 6	93.7	4.3	94.9	4.7	299.2	6.0
	7 9	93.3	0.4	92.5	2.5	313.5	4.8
		88.7	4.9	88.9	3.9	308.4	1.6
		89.1	0.5	88.3	0.7	318.9	3.4
		94.9	4.2	95.6	7.4	289.9	71.7
	4 6	90.4	4.9	91.0	9.9	324.5	7.7
	7 9	95.8	0.6	95.8	1.6	295.2	1.1
		92.0	6.1	92.8	7.2	294.2	3.2
		86.5	8.9	84.7	11.4	290.5	0.2

1	.	.
2	.	.
3	.	.

9

	8.7	1.5	
	7.9	19.4	
	1.9	0.1	()
	5.0	13.8	
	3.8	12.3	
	20.9	20.6	
	2.7	4.5	()
	3.7	3.1	A
	3.0	4.3	
	6.3	7.2	

	0.3	3.9	
	9.5	24.6	
	10.3	4.6	()
	2.9	13.7	
	1.1	29.7	
	17.5	21.5	
	7.0	0.7	
	11.1	1.5	A
	4.4	6.1	
	6.5	8.5	

	0.4	4.8	
	10.6	91.5	
	5.9	29.4	
	0.2	32.4	
	72.0	61.5	
	36.4	0.4	
	2.6	11.0	
	3.3	3.9	A
	6.5	6.7	
	9.4	1.1	

