

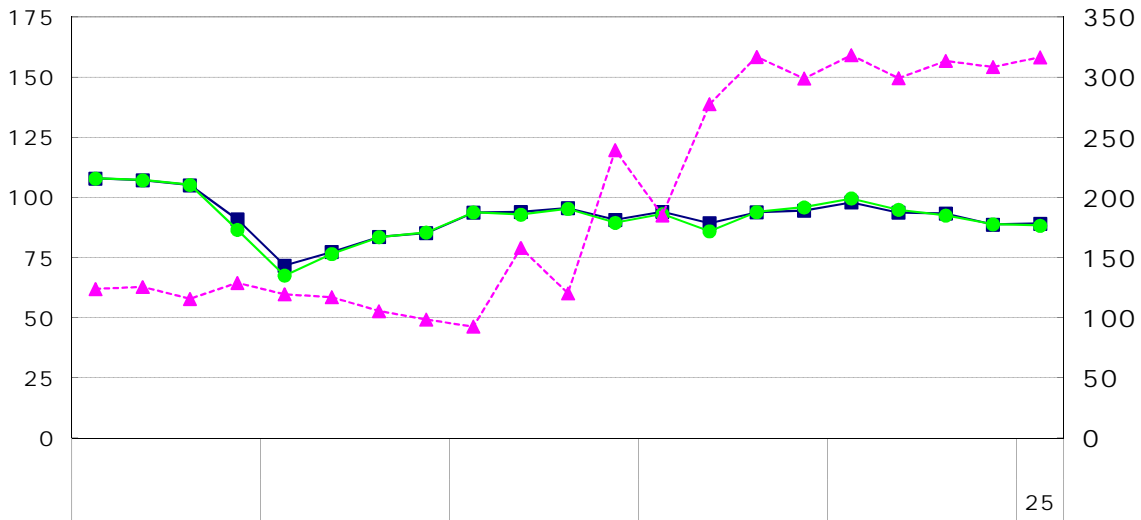
18					
18					
18					

17 100

		89.4	1.0	92.9	8.3
		89.7	2.3	91.8	11.0
		316.6	6.1	288.4	0.5
		100.0	0.1	101.8	8.8
		101.5	0.4	104.6	7.9
		119.0	4.1	118.2	13.3
		90.4	0.9	95.3	6.7
		92.4	1.2	101.2	5.0
		102.8	0.2	97.4	4.4

		97.9	3.6	99.6	3.9	318.3	6.5
	4 6	93.7	4.3	94.9	4.7	299.2	6.0
	7 9	93.3	0.4	92.5	2.5	313.5	4.8
		88.7	4.9	88.9	3.9	308.4	1.6
		89.1	0.5	88.3	0.7	316.6	2.7
		94.9	4.2	95.6	7.4	289.9	71.7
	4 6	90.4	4.9	91.0	9.9	324.5	7.7
	7 9	95.8	0.6	95.8	1.6	295.2	1.1
		92.0	6.1	92.8	7.2	294.2	3.2
		86.5	8.9	84.7	11.4	288.4	0.5

()



1	.	.	.
2	.	.	.
3	.	.	.

9

	6.5	2.2	
	4.9	17.8	
	4.8	2.6	
	3.3	12.7	
	31.8	43.0	
	2.9	18.0	
	7.0	0.6	
	11.7	10.8	A
	7.7	12.7	
	1.0	8.3	

	5.9	4.8	
	6.4	6.7	
	10.0	6.3	
	5.3	12.4	
	22.7	51.6	
	3.1	19.4	
	4.0	3.5	
	10.6	7.9	
	6.4	15.0	
	2.3	11.0	

	2.5	10.9	
	1.1	102.3	
	22.0	3.2	()
	13.9	6.1	
	100.0	0.0	
	13.7	0.4	
	0.8	5.3	()
	0.6	1.8	A
	17.0	21.5	
	6.1	0.5	

130
125
120
115
110
105
100
95
90
85
80
75
70
65
60

