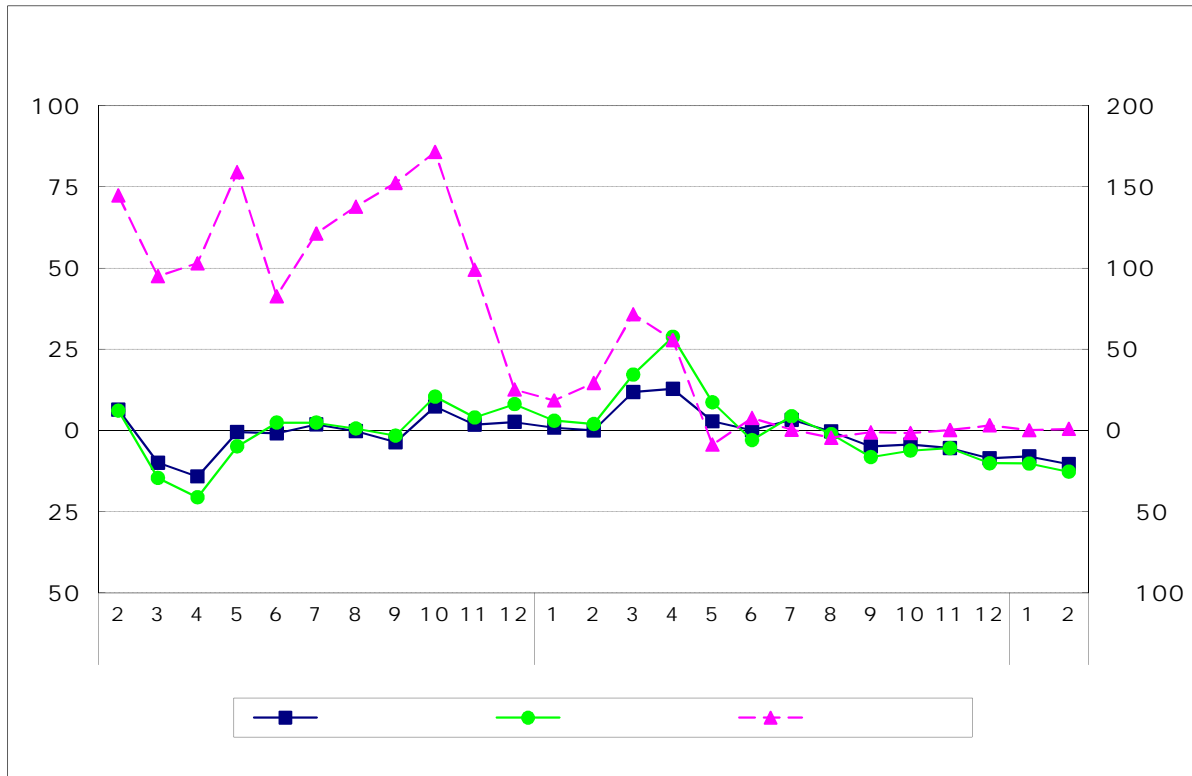


18					
18					
18					

17 100

		88.5	1.1	84.5	10.4
		87.7	0.1	83.5	12.7
		298.5	2.4	293.6	1.0
		100.0	2.0	93.4	8.7
		101.7	1.0	94.8	9.3
		124.4	2.8	127.2	6.9
		89.6	0.6	84.7	10.5
		91.3	1.4	86.8	8.8
		102.6	2.0	106.6	0.5



17 100

2		94.5	0.7	95.9	2.0	299.0	5.6
		97.9	3.6	99.6	3.9	318.3	6.5
	4 6	93.7	4.3	94.9	4.7	299.2	6.0
	7 9	93.3	0.4	92.5	2.5	313.5	4.8
		88.7	4.9	88.9	3.9	308.4	1.6
2		98.0	3.9	100.0	7.4	285.2	25.3
		94.9	4.2	95.6	7.4	289.9	71.7
	4 6	90.4	4.9	91.0	9.9	324.5	7.7
	7 9	95.8	0.6	95.8	1.6	295.2	1.1
		92.0	6.1	92.8	7.2	294.2	3.2

1	.	.	.
2	.	.	.
3	.	.	.

9

	1.9	5.0	
	8.6	7.0	
	9.5	3.3	
	5.4	12.6	
	9.7	50.2	
	4.7	18.9	
	0.5	5.8	
	0.3	8.6	A
	2.9	11.4	
	1.1	10.4	

	17.7	1.0	
	2.9	12.1	
	5.2	3.5	
	4.5	13.6	
	11.9	53.8	
	3.3	20.3	
	0.5	3.2	
	6.6	2.3	
	0.5	10.2	
	0.1	12.7	

	1.7	8.2	
	9.5	68.9	
	7.8	31.5	
	4.5	7.1	
	32.8	95.2	
	20.6	0.2	
	1.6	7.6	
	0.3	0.5	A
	0.1	4.7	
	2.4	1.0	

