

24 12

24 12

.
.
.
.

.
.
.

.
.

.
.

18
18
18

17 100

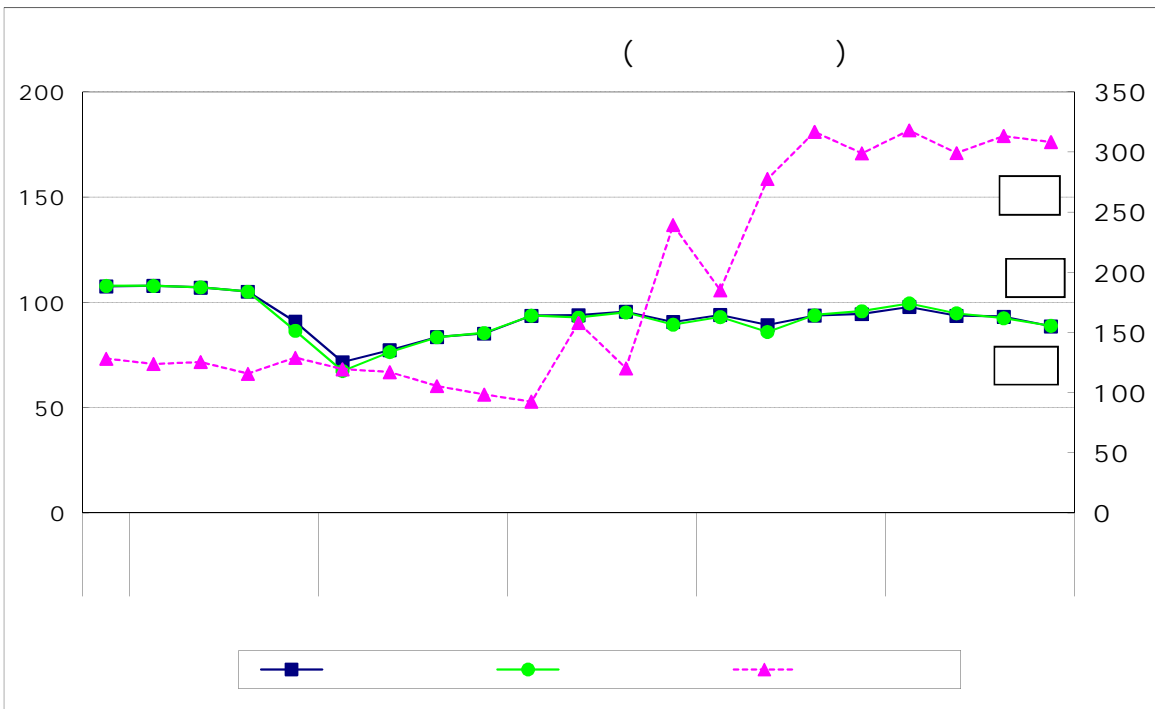
		88.0	1.5	90.3	8.6
		88.5	2.4	91.5	10.1
		308.4	2.7	294.2	3.2
		102.7	2.2	102.4	5.4
		107.3	7.2	106.4	6.7
		132.6	3.2	132.6	2.8
		88.8	2.4	87.7	7.9
		90.3	4.0	91.0	7.5
		105.1	1.2	103.8	3.5

2

%

17 100

2		94.5	0.7	95.9	2.0	299.0	5.6
		97.9	3.6	99.6	3.9	318.3	6.5
	4 6	93.7	4.3	94.9	4.7	299.2	6.0
	7 9	93.3	0.4	92.5	2.5	313.5	4.8
		88.7	4.9	88.9	3.9	308.4	1.6
2		98.0	3.9	100.0	7.4	285.2	25.3
		94.9	4.2	95.6	7.4	289.9	71.7
	4 6	90.4	4.9	91.0	9.9	324.5	7.7
	7 9	95.8	0.6	95.8	1.6	295.2	1.1
		92.0	6.1	92.8	7.2	294.2	3.2



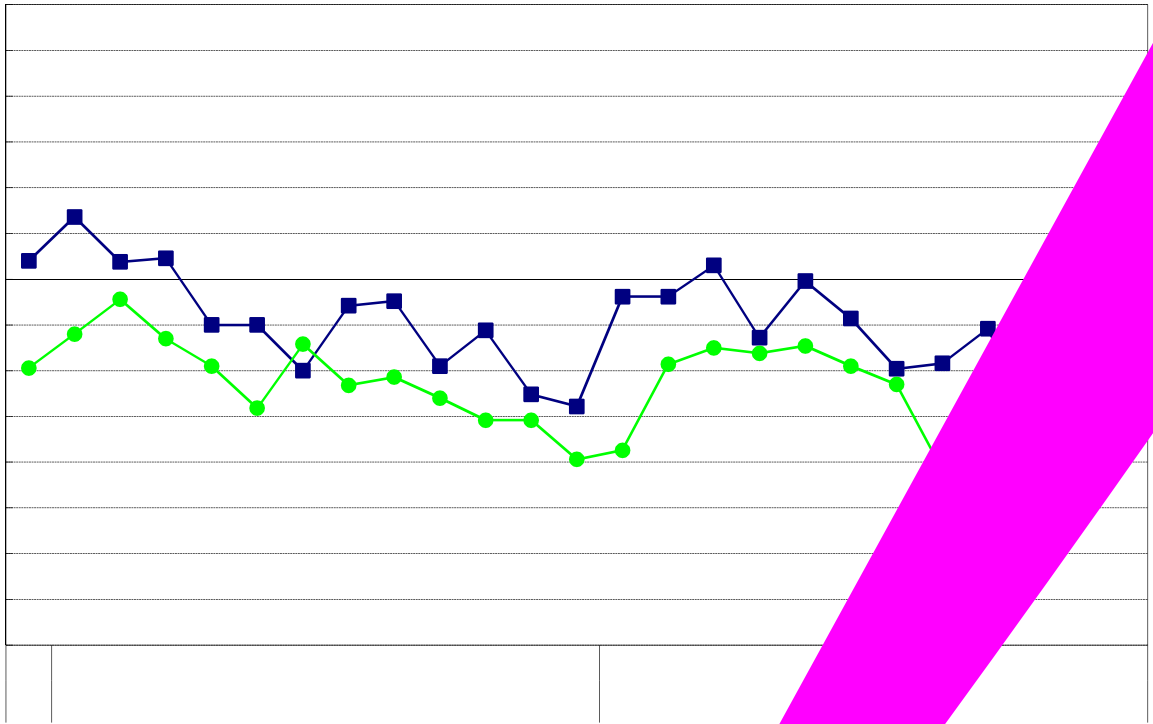
1	.	.	.
2	.	.	.
3	.	.	.

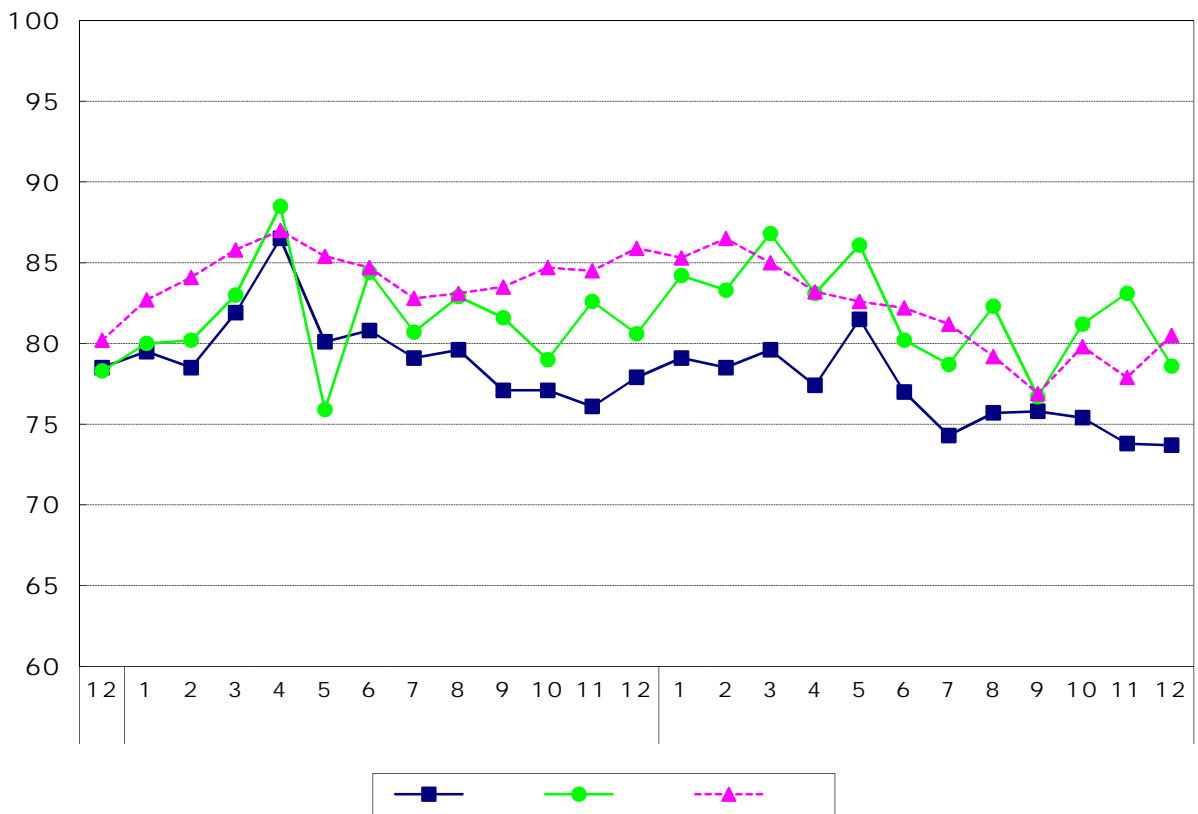
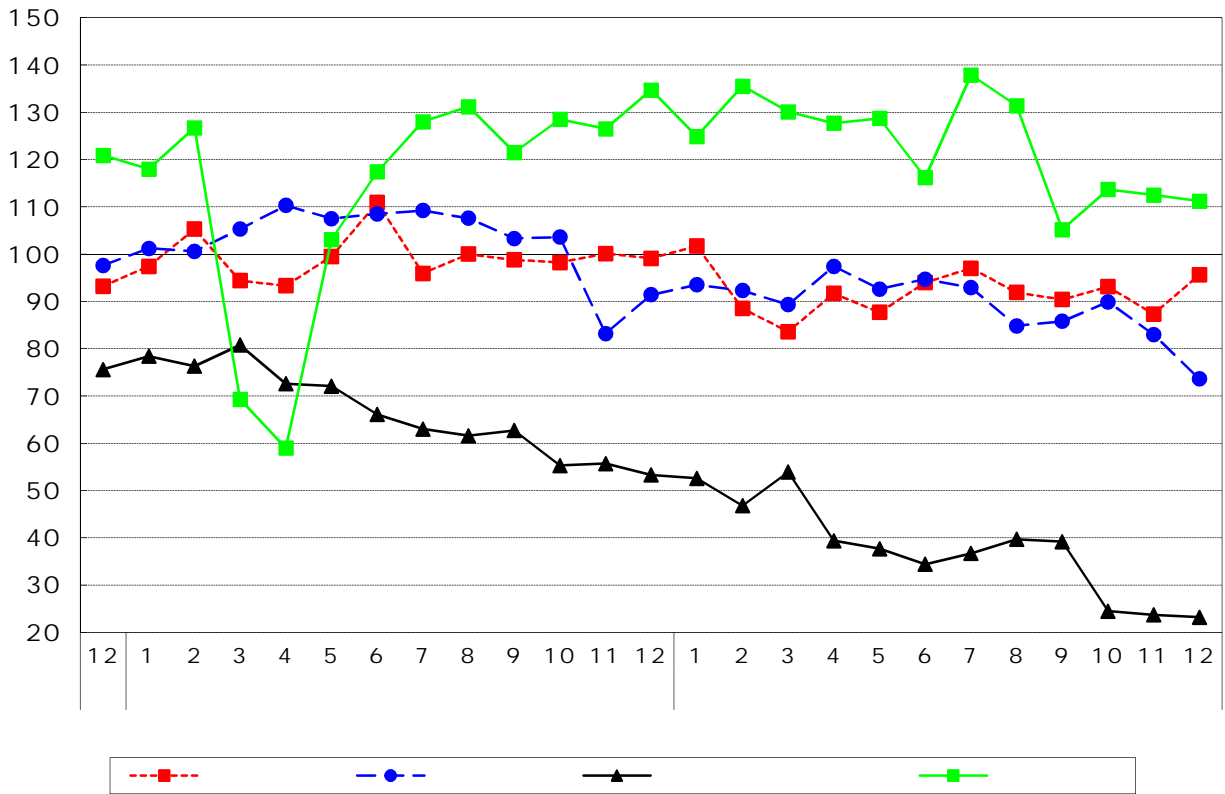
9

	0.8	1.7	
	7.5	4.9	
	9.5	3.6	
	11.3	19.5	
	2.1	56.5	
	1.2	17.5	
	0.1	5.3	
	14.8	0.3	
	1.3	2.4	
	1.5	8.6	

	6.1	2.0	
	3.5	2.1	
	1.1	5.9	
	13.0	18.9	
	5.7	56.1	
	0.6	17.9	
	5.4	2.5	
	16.2	10.9	
	3.2	0.8	
	2.4	10.1	

	2.3	11.0	
	2.0	40.1	
	5.0	88.9	
	19.6	6.6	
	49.6	-	
	0.2	2.2	
	3.3	6.3	
	2.5	10.6	A
	3.4	5.1	
	2.7	3.2	





— —
—————

