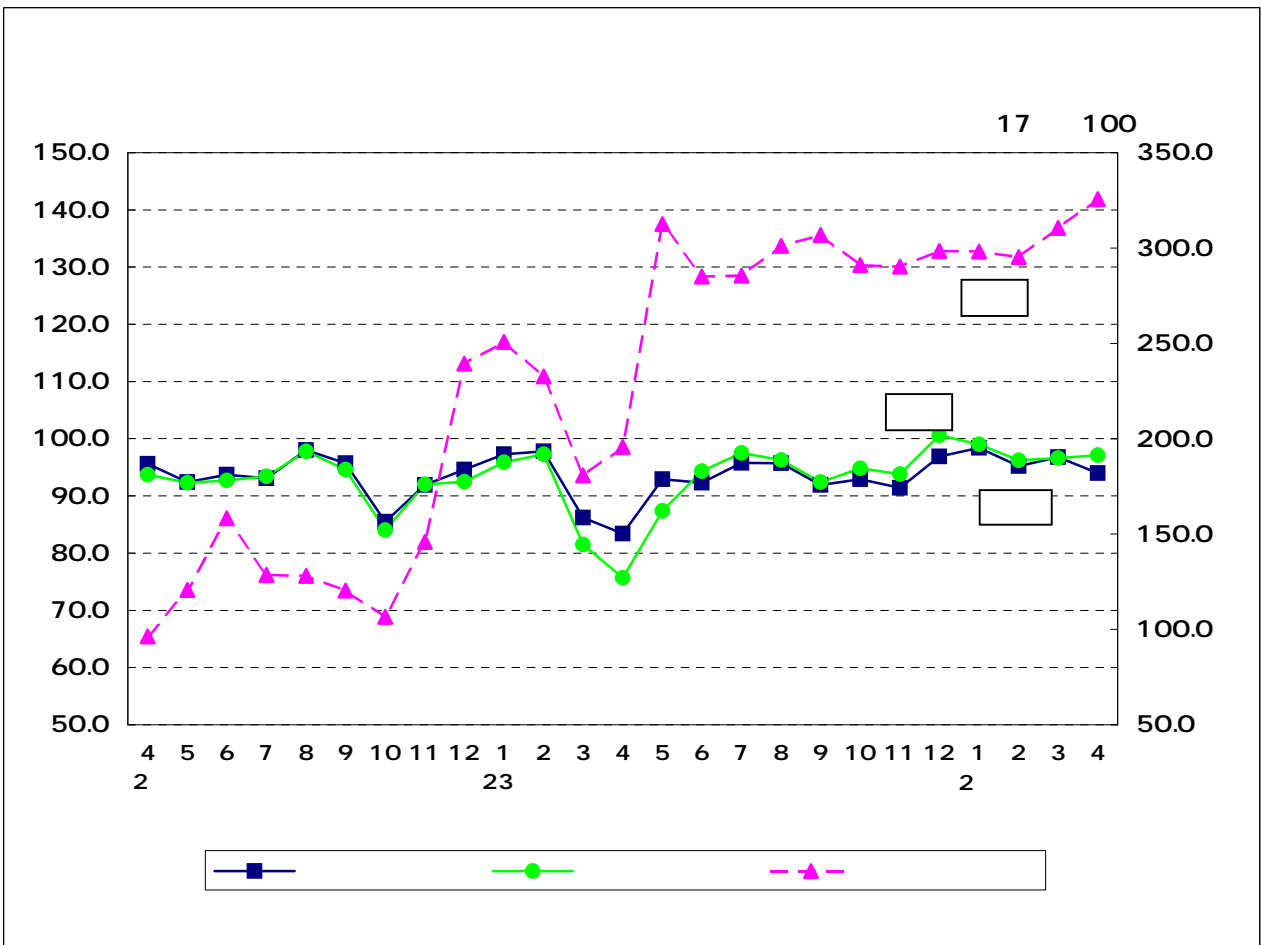


17

24 4

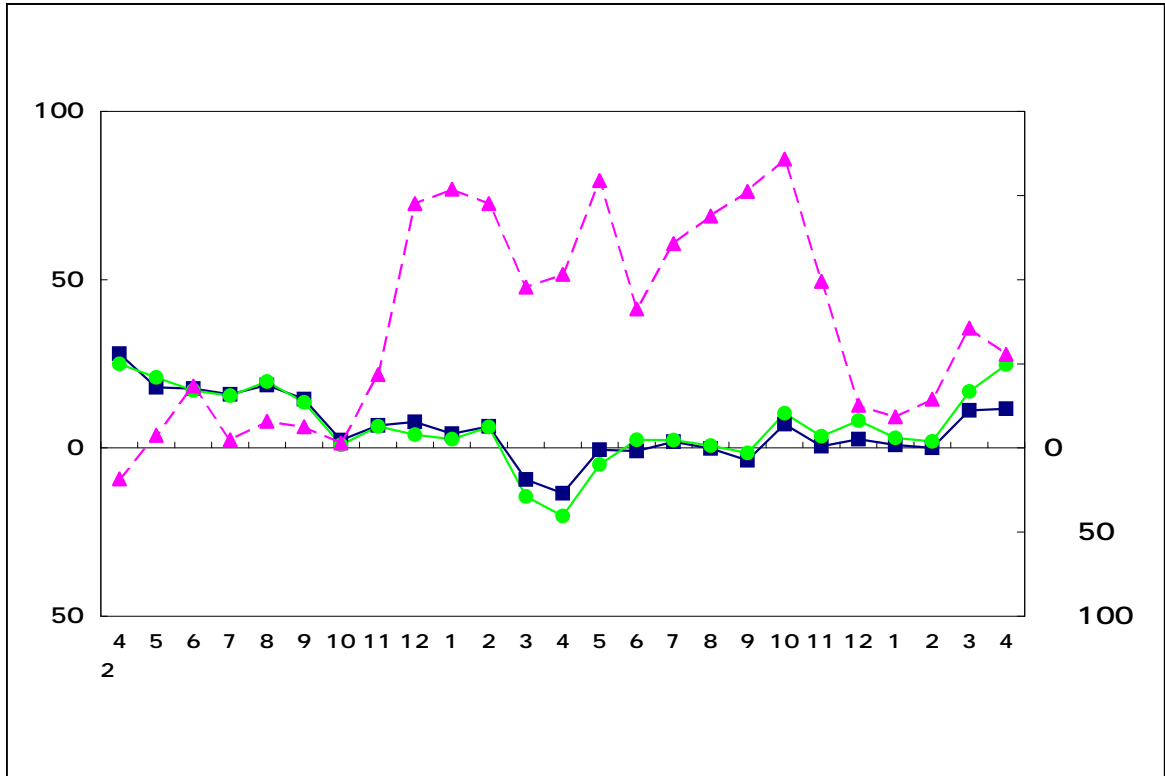


24 4

24	9	.
		
		
		
	%	
18						
18						
18						

17 100

		94.0	2.9	88.8	11.6
		97.1	0.5	89.2	24.8
		325.7	4.9	293.4	55.6
		106.1	2.2	99.3	5.2
		106.1	2.5	99.2	11.5
		136.4	0.7	133.2	19.0
		95.4	0.2	90.0	12.9
		96.4	0.6	89.2	16.0
		109.6	2.0	104.7	10.8



17 100

2		93.8	3.4	91.6	2.3	221.4	35.1
	4 6	89.5	4.6	85.8	6.3	264.4	19.4
	7 9	94.5	5.6	95.4	11.2	297.8	12.6
		93.7	0.8	96.4	1.0	293.2	1.5
		96.8	3.3	97.3	0.9	301.3	2.8
2		91.3	0.0	89.2	2.5	214.1	132.7
	4 6	86.4	5.1	83.0	7.4	270.2	112.4
	7 9	96.4	0.7	97.5	0.4	303.4	136.5
		97.5	3.4	99.8	7.2	294.9	81.3
		94.9	3.9	95.6	7.2	291.4	36.1

1		
2	9	
3		

9

	9.2	1.4	
	11.1	9.0	
	8.4	1.9	
	9.5	11.5	
	28.7	45.7	
	12.0	115.8	
	6.5	13.0	
	16.7	0.8	A
	10.7	7.7	
	2.9	11.6	

	2.4	1.4	
	11.6	1.5	
	0.8	3.5	
	9.8	13.1	
	26.7	42.5	
	12.8	146.1	
	3.4	6.3	
	13.8	3.9	
	13.3	1.2	
	0.5	24.8	

	4.3	2.9	
	5.6	0.4	
	48.4	251.2	
	29.8	14.5	
	-	82.4	-
	18.6	92.6	
	3.0	4.5	
	1.0	14.4	
	4.2	1.8	
	4.9	55.6	

