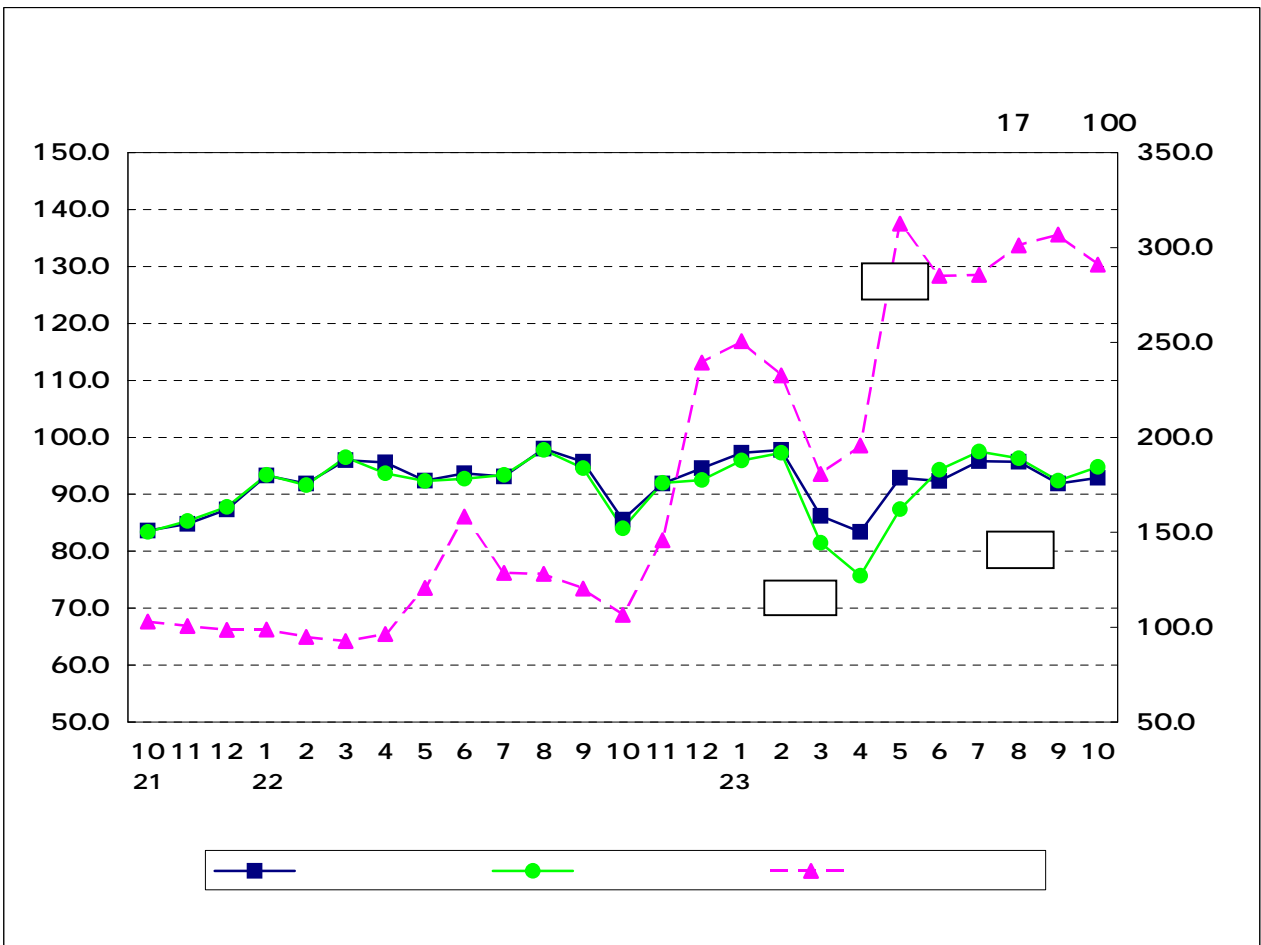
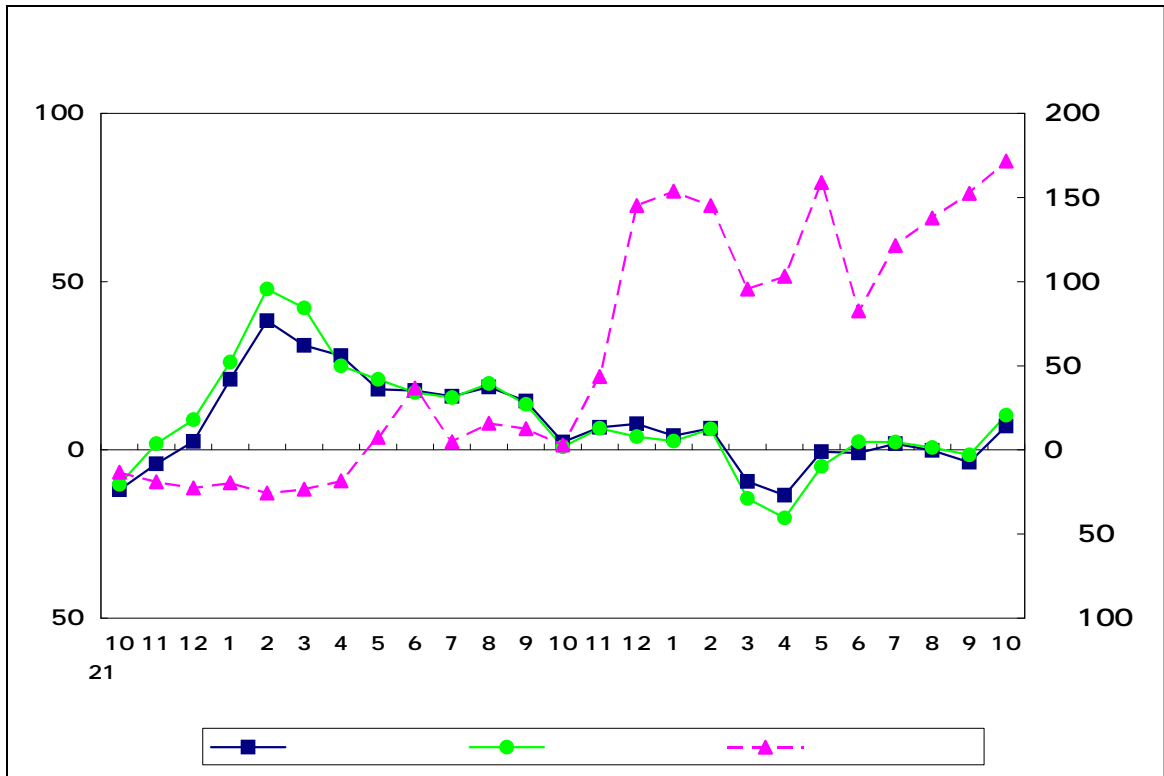


17

23 10





17 100

	7 9	95.6	1.8	95.3	2.6	125.7	0.5
		90.7	5.1	89.5	6.1	163.9	30.4
2		93.8	3.4	91.6	2.3	221.4	35.1
	4 6	89.5	4.6	85.8	6.3	264.4	19.4
	7 9	94.5	5.6	95.4	11.2	297.8	12.6
	7 9	97.1	16.1	97.1	16.0	128.3	10.9
		94.3	5.6	93.1	3.7	162.7	60.1
2		91.3	0.0	89.2	2.5	214.1	132.7
	4 6	86.4	5.1	83.0	7.4	270.2	112.4
	7 9	96.4	0.7	97.5	0.4	303.4	136.5

9

	9.9	3.5
	0.0	7.9
	4.0	3.5
	0.2	6.4
	13.2	24.9
	5.6	27.9
	1.7	1.9
	1.1	15.6
	10.6	12.8
	1.1	7.1

A

	2.7	1.5
	4.3	12.5
	0.9	6.9
	3.5	9.7
	10.5	28.3
	6.4	27.3
	0.1	2.7
	0.1	18.6
	7.8	16.3
	2.6	10.3

A

	3.0	8.5
	8.5	8.2
	4.8	88.8
	12.3	29.4
	-	66.3
	7.5	495.2
	1.6	6.3
	4.5	0.3
	8.1	14.3
	5.2	171.6

