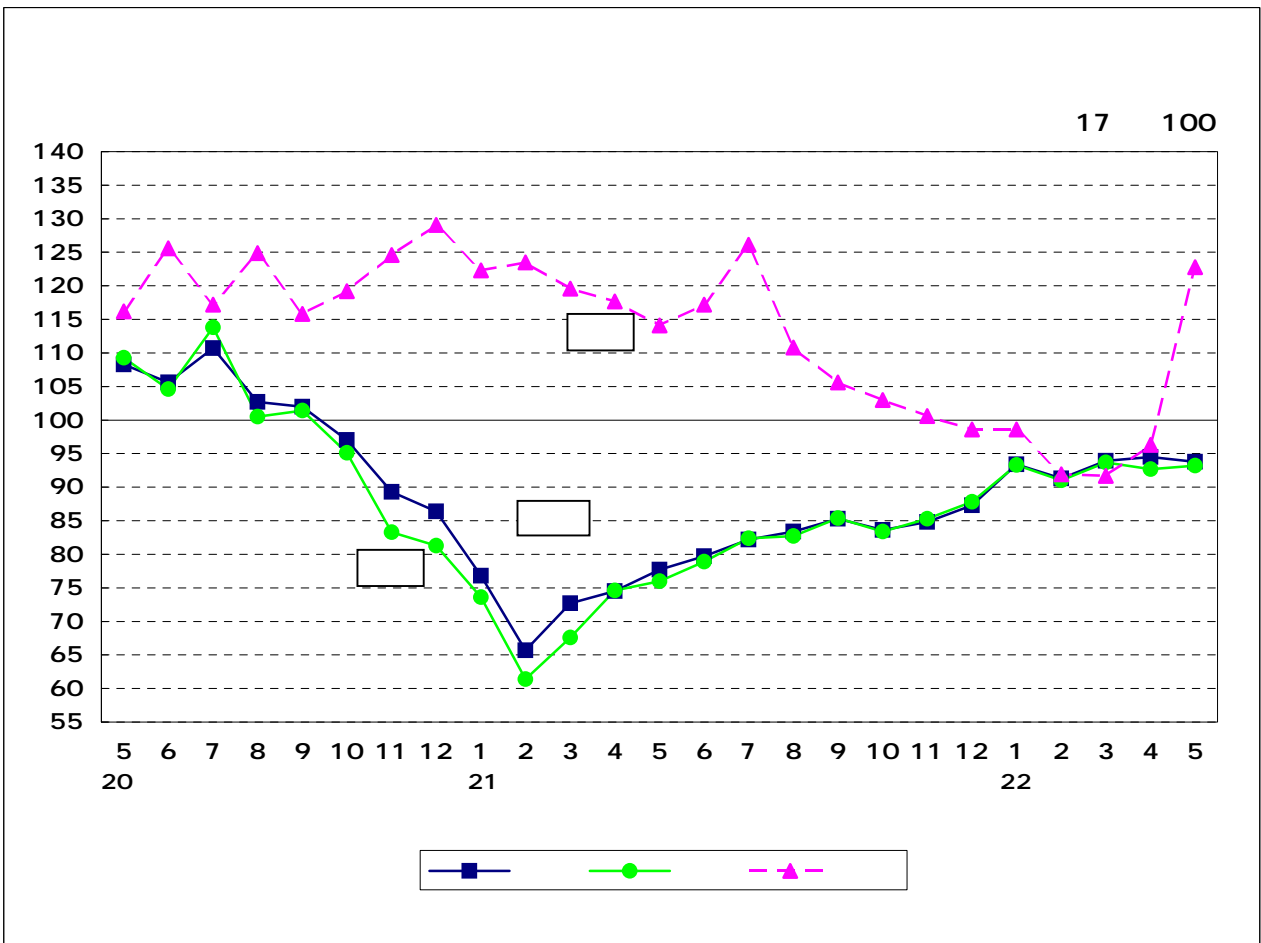


17

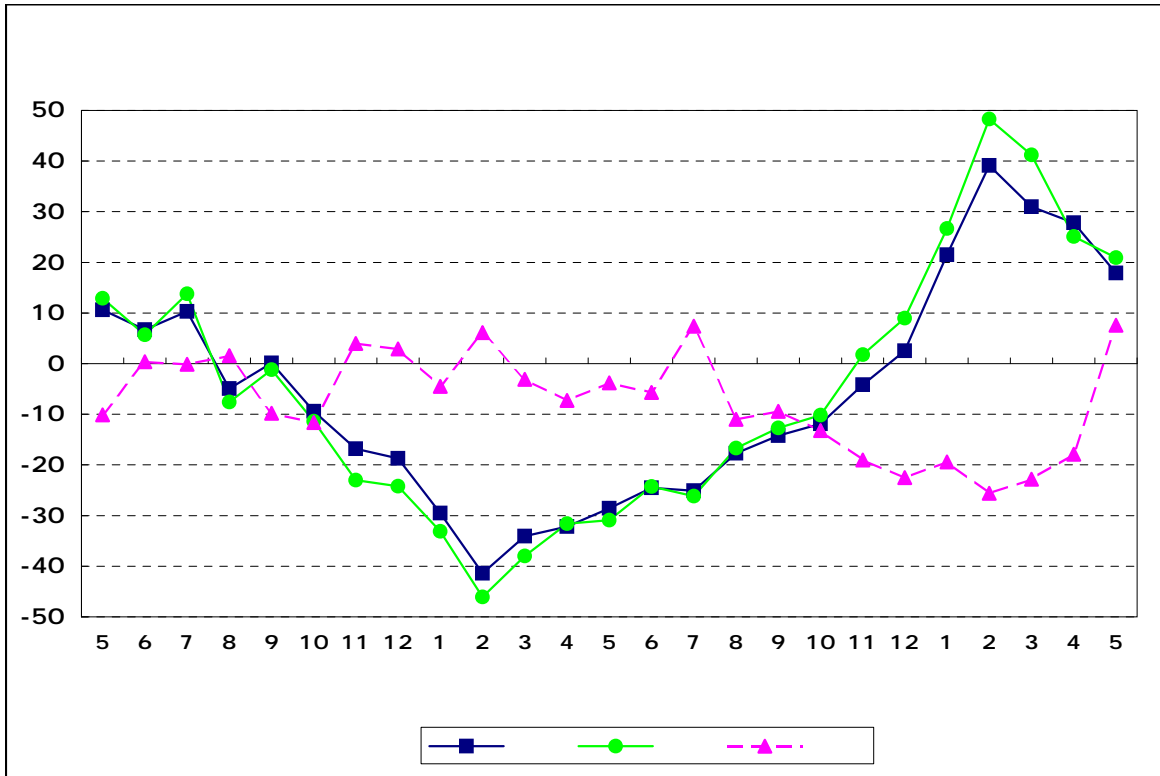
22 5



2				0.7
			2	
				%
18				
18				
18			0	

17 100

		93.8	0.7	85.8	17.9
		93.2	0.5	84.0	20.9
		122.8	27.5	124.1	7.6
		104.0	2.2	94.6	22.1
		104.2	3.2	94.1	22.5
		109.5	4.1	107.7	2.4
		96.1	0.1	87.4	20.4
		96.4	1.7	86.5	21.0
		96.5	2.0	95.4	0.8

17 100

21	1 3	71.7	21.1	67.5	22.1	121.8	2.0
	4 6	77.3	7.8	76.5	13.3	116.3	4.5
	7 9	83.6	8.2	83.5	9.2	114.2	1.8
	10 12	85.2	1.9	85.5	2.4	100.7	11.8
2	1 3	92.9	9.0	92.7	8.4	94.1	6.6
21	1 3	70.3	35.2	66.1	39.2	119.2	0.7
	4 6	75.2	28.4	74.1	29.0	116.5	5.6
	7 9	83.6	19.1	83.7	18.8	115.7	4.5
	10 12	89.3	4.9	89.8	0.3	101.6	18.1
2	1 3	91.6	30.3	91.5	38.4	92.3	22.6

1	9		
2			
3			

9

	6.7	34.0	
	7.7	6.9	
	12.1	26.7	
	3.1	45.3	
	4.6	27.3	
	1.4	30.5	
	0.0	5.8	
	17.0	10.8	
	0.5	4.8	
	0.7	17.9	

	5.7	64.4	
	17.1	19.8	
	11.3	29.8	
	5.8	44.6	
	6.2	24.3	
	2.7	28.1	
	6.4	8.3	
	3.1	19.3	
	3.0	6.5	
	0.5	20.9	

	9.1	2.5	
	16.1	42.5	
	22.3	65.3	(
	11.4	31.0	
	16.1	26.7	
	136.0	89.1	
	1.4	10.5	
	6.0	5.1	
	2.0	5.2	
	27.5	7.6	

