



平成25年度業務概要の発刊に寄せて

10

10

()

10

10

()

11

12

12

13

13

14

14

14

15

15

16

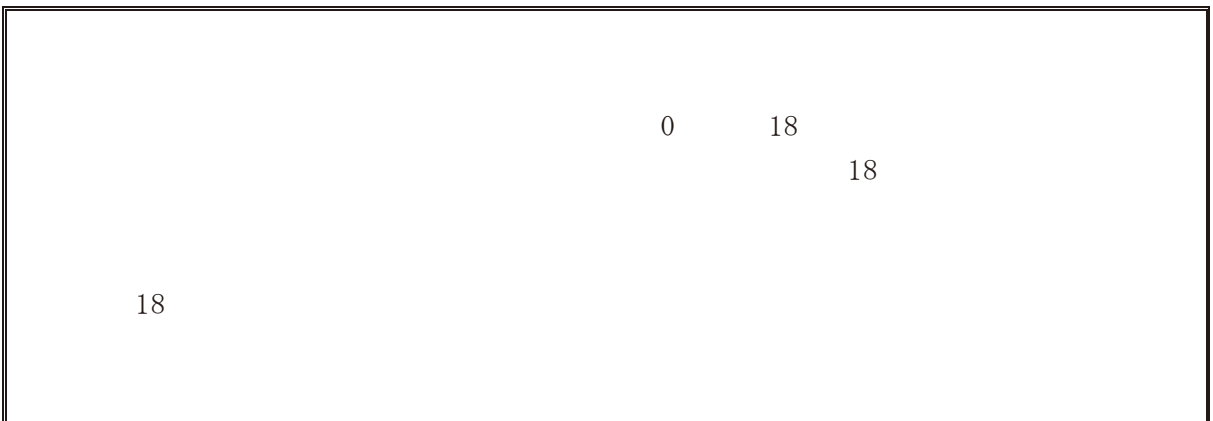
17

18

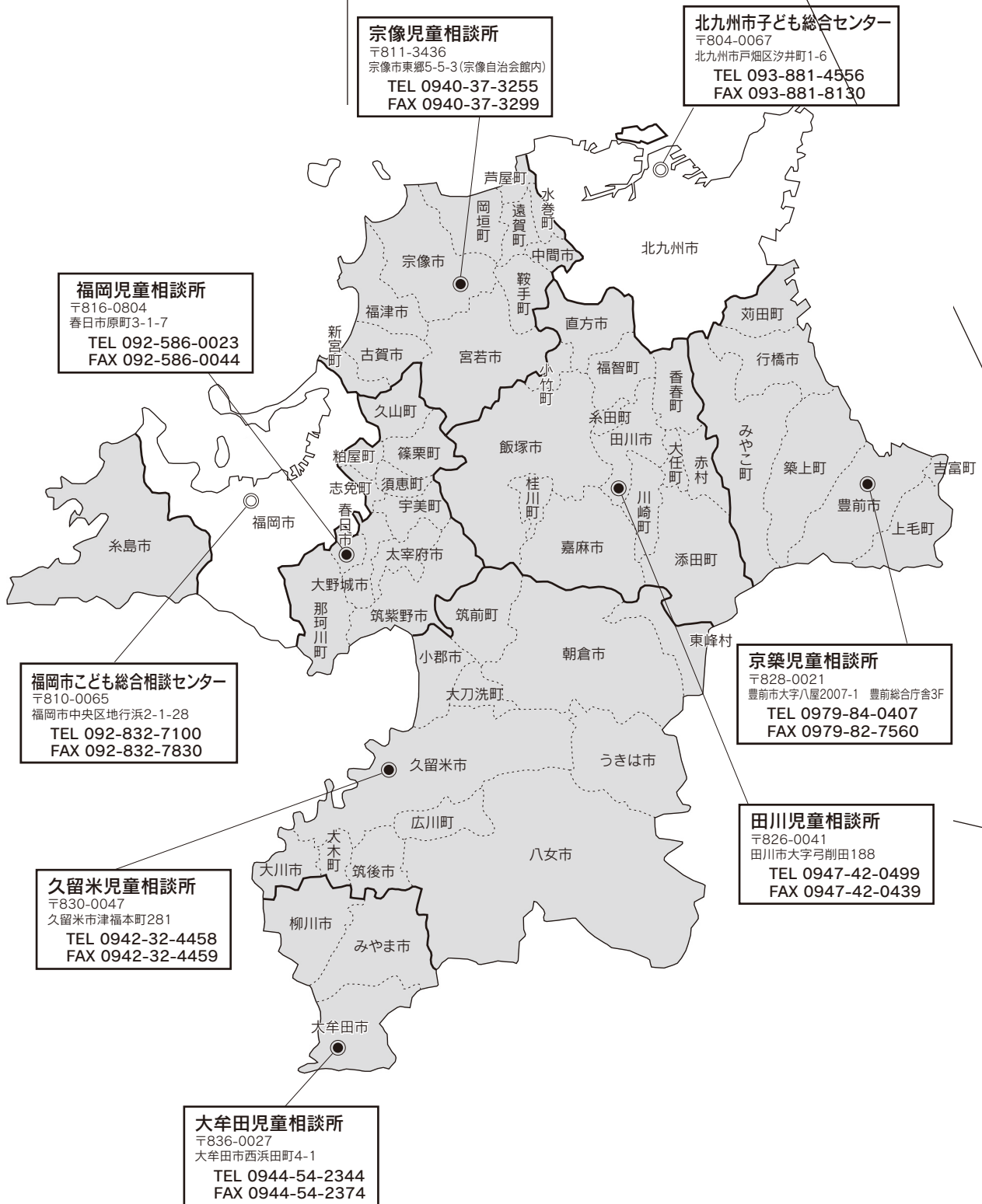
19

“

”



4 児童相談所管轄区域図 (平成25年4月1日現在)



()

()

()

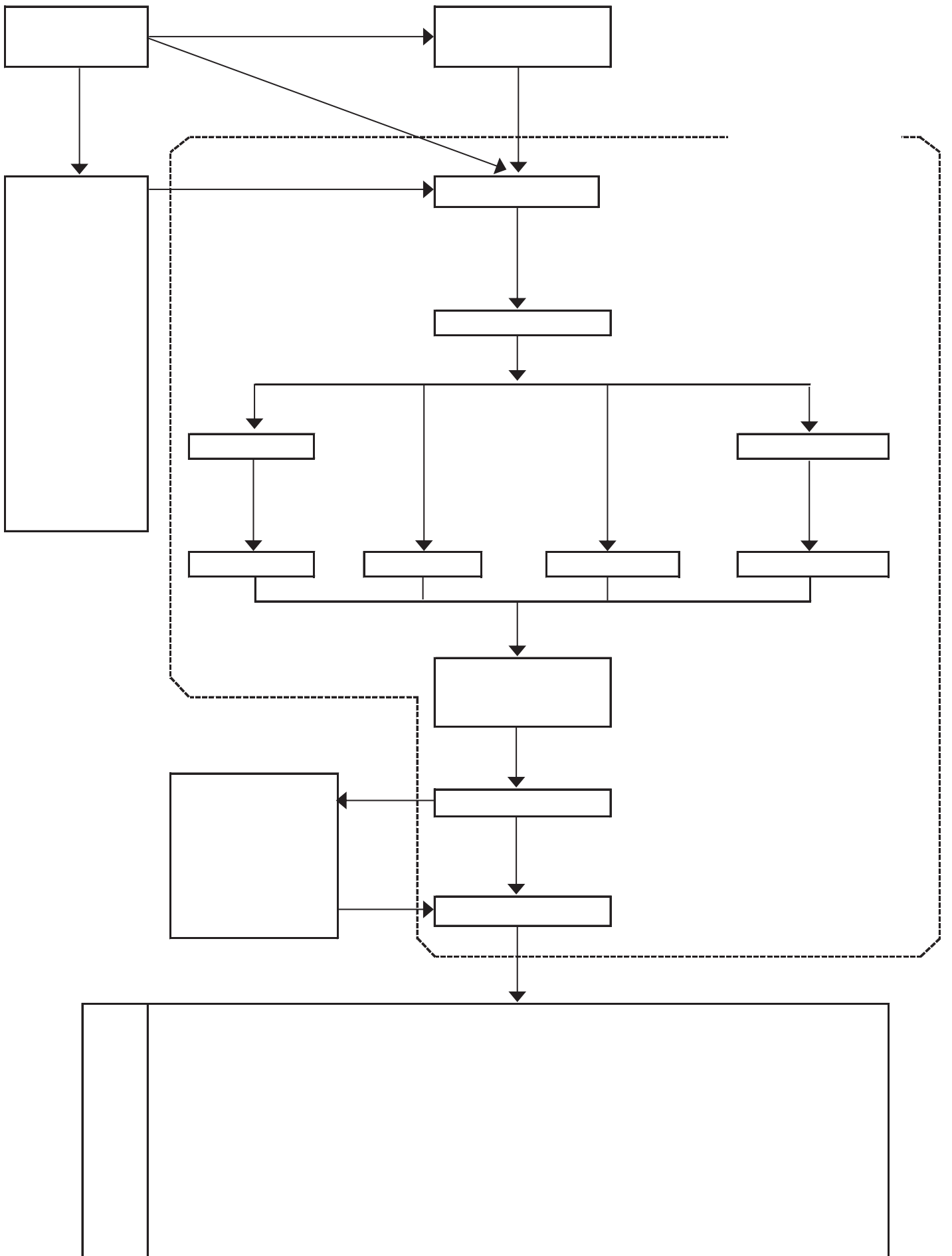
(

()

()

()

()

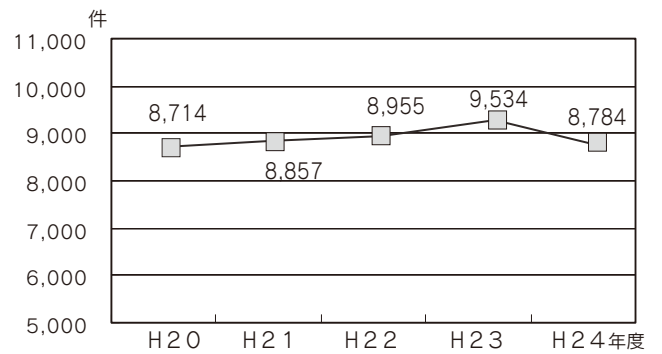


		1	1	1	1	1	1	6	
		1						1	
						1		1	
		2	2	2	2	2		10	
		4	3	3	2	2	1	15	
		11	11	10	4	6	3	45	
	()	3	2	2	1	1	1	10	
		1	1	1	1			4	
		1	1	1				3	
		1						1	
		4	5	4	2	3	2	20	
		1	1	1	1			4	
		5	5	5	5			20	
		1	1	1	1			4	
		3	1	1	1	1		7	
		1						1	
		1	1	1	1			4	
			1	1	1	1			4
			1	1	1				3
			1	1	1	1			4
			1	1	1	1			4
			1	1	1	1			4
			1	1	1	1			4
						1	1	1	3
			1	1	1	1			4
			1	1	1	1			4
		36	33	31	20	15	9	144	
		12	9	9	9	2	1	42	
		5 7	7 4 1	4 8	3	5 6	2 5	26 30 2	
		719,182	679,369	380,146	228,948	422,436	187,383	2,617,464	
		136,886	113,426	58,605	33,643	69,253	30,280	442,093	

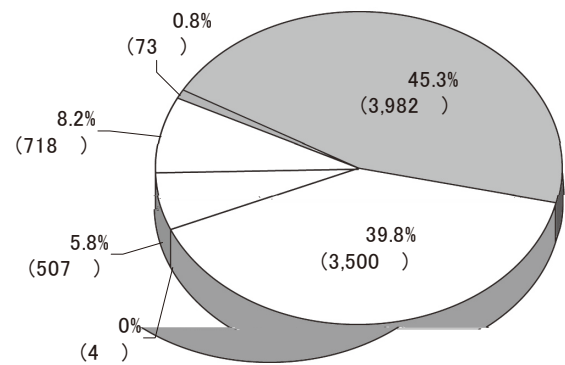
25 5
25 4 1

1 児童相談の全体状況

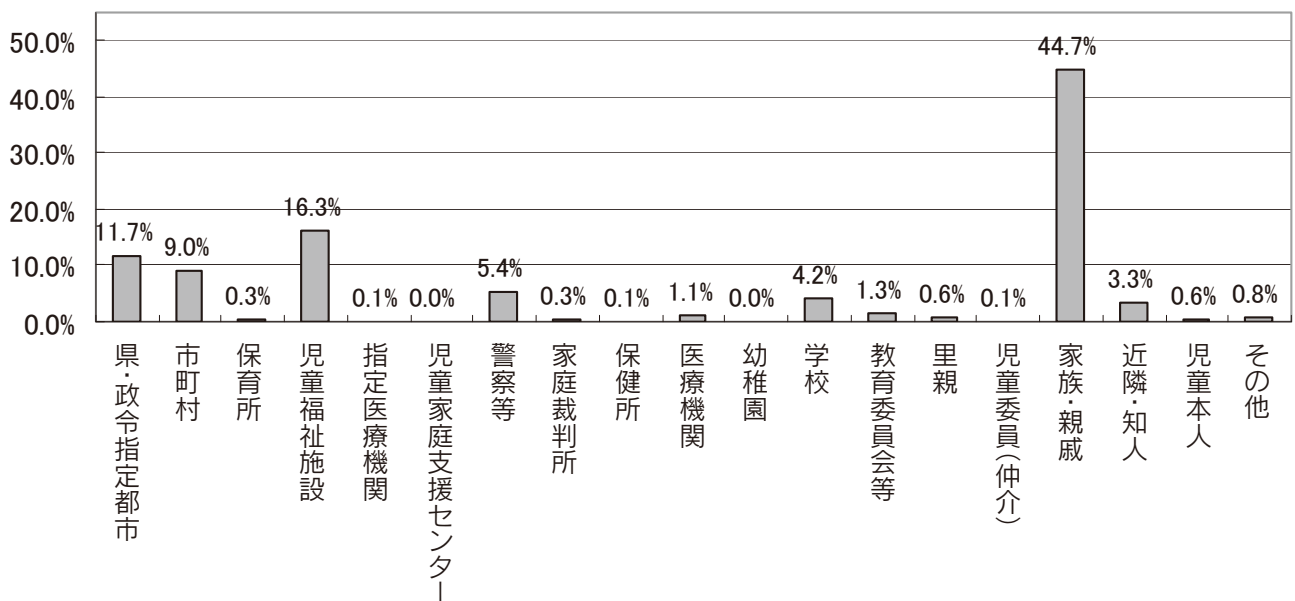
相談受付件数の推移



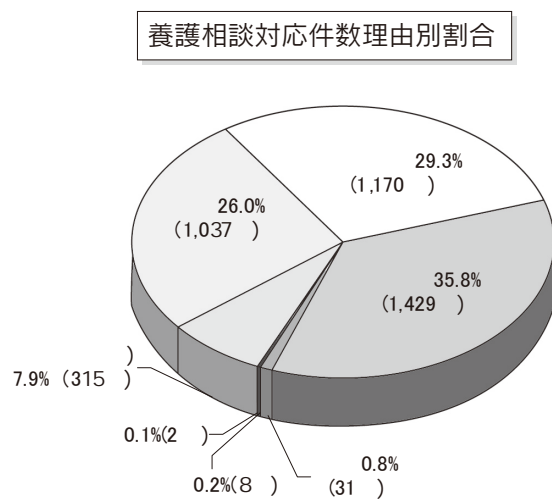
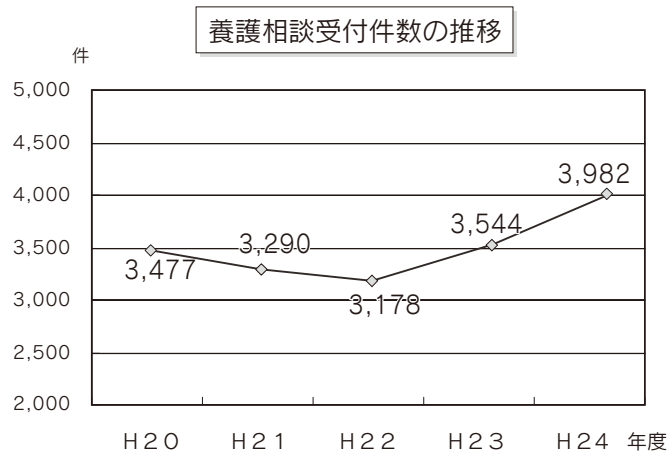
相談種別割合



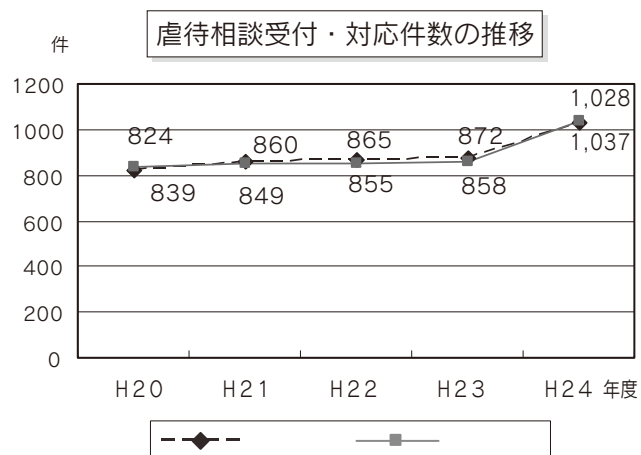
相談受付件数経路別割合



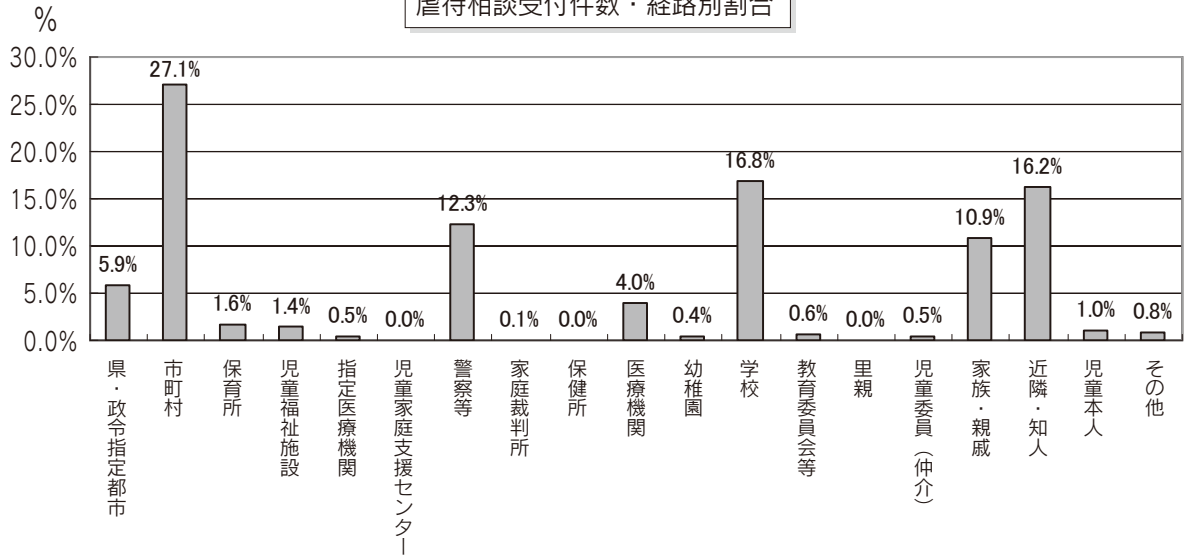
2 養護相談



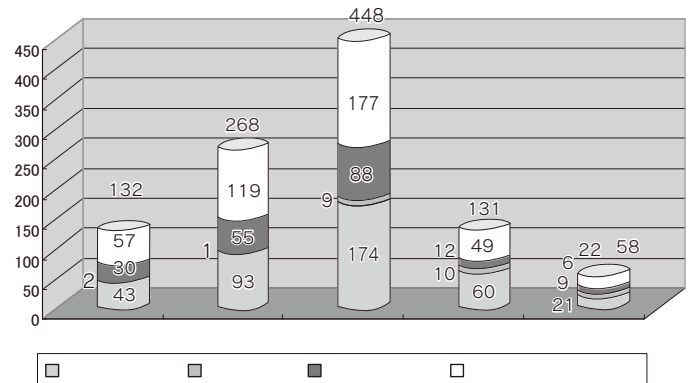
3 児童虐待相談



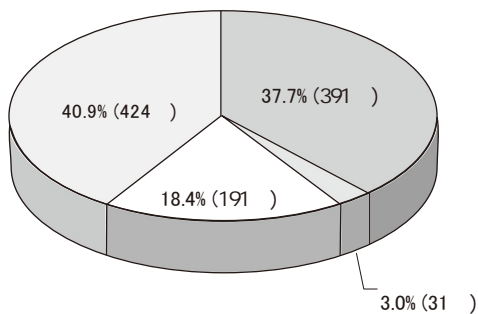
虐待相談受付件数・経路別割合



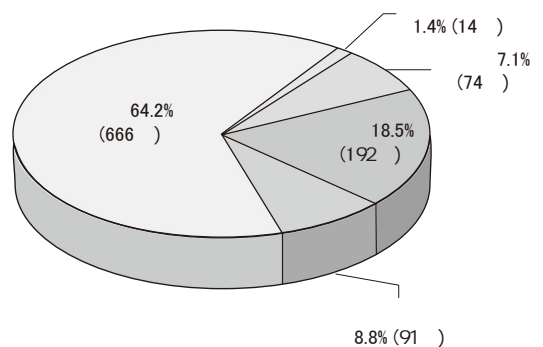
虐待種類別・年齢別対応件数



虐待相談対応件数・種類別割合



虐待相談対応件数・虐待者別割合

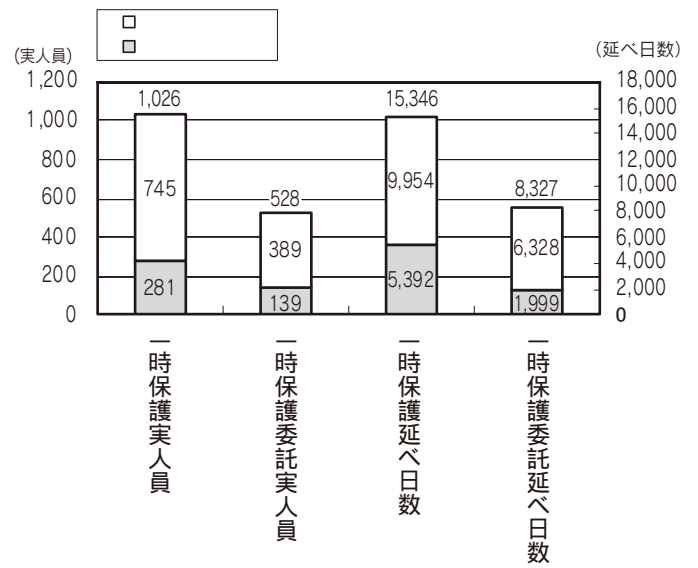


法的対応件数

28	1	1	2	6	1
				2	0
				0	0

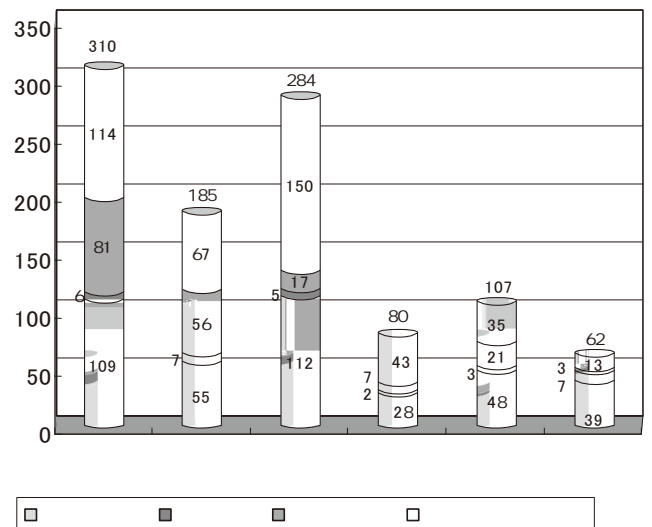
	100
	0
	0
	16

一時保護・一時保護委託人員

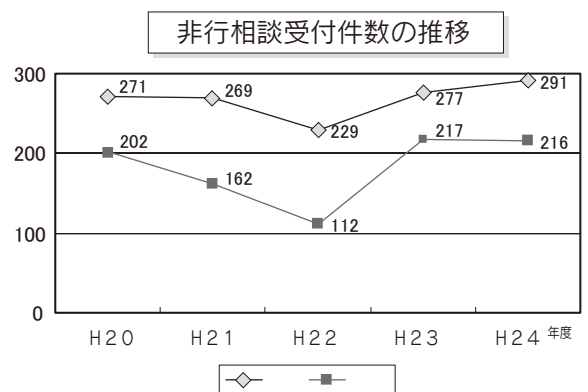


÷

児童相談所別虐待種別別受付件数



4 非行相談

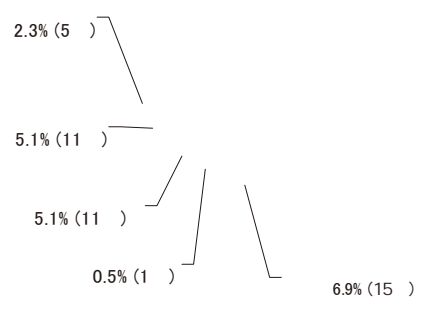


8.2% (24)

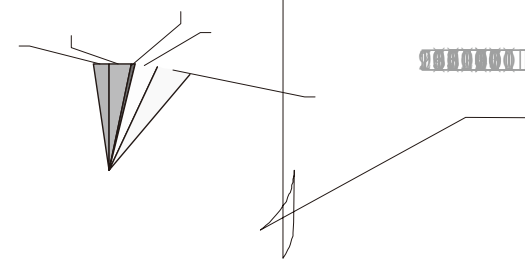
15.5% (45)

2.4% (7)

1.0% (3)

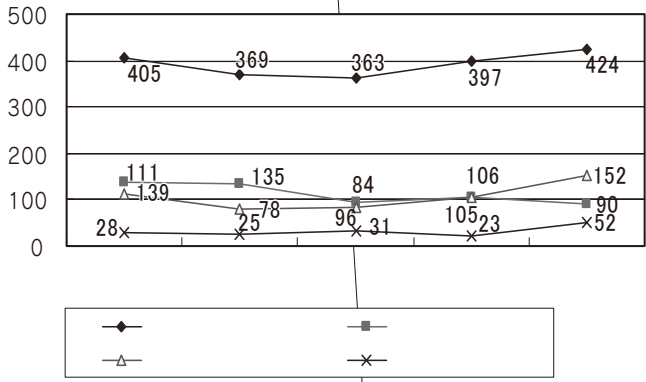


5 障害相談

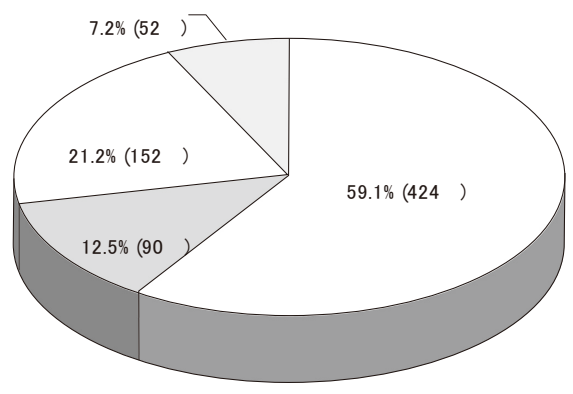


6 育成相談

育成相談受付件数の推移



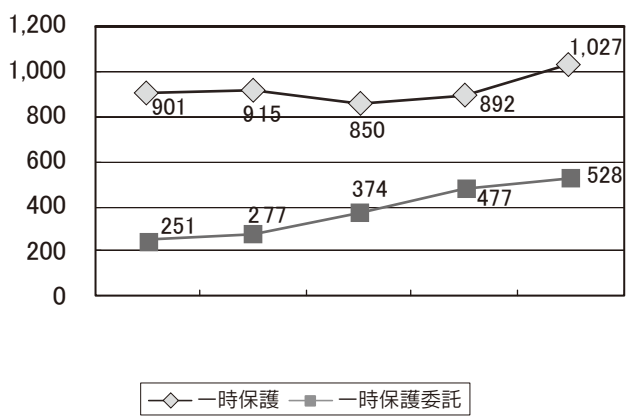
育成相談種類別割合



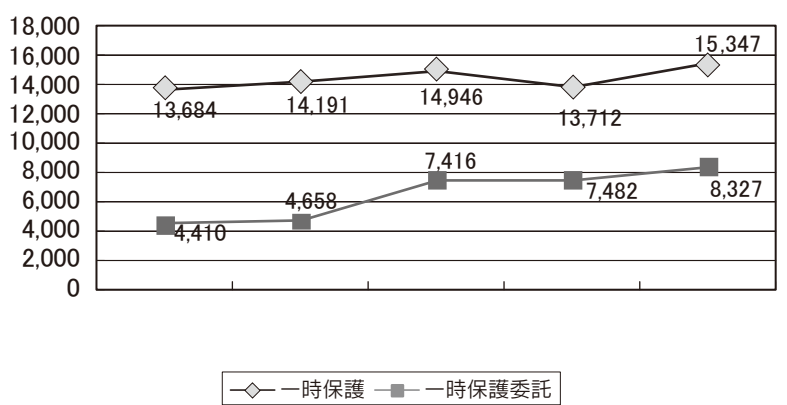
7 一時保護

委託

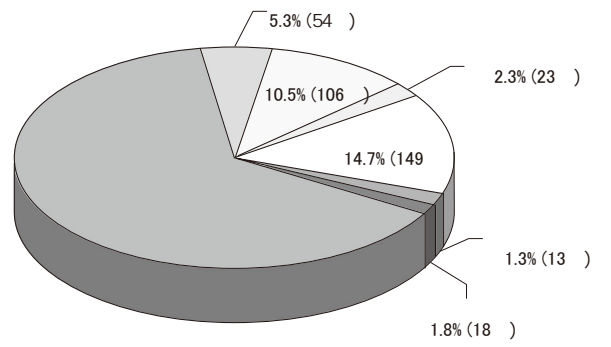
一時保護・一時保護委託実人員の推移



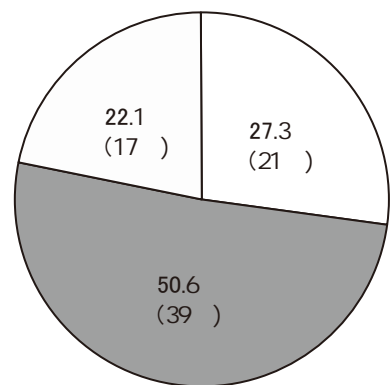
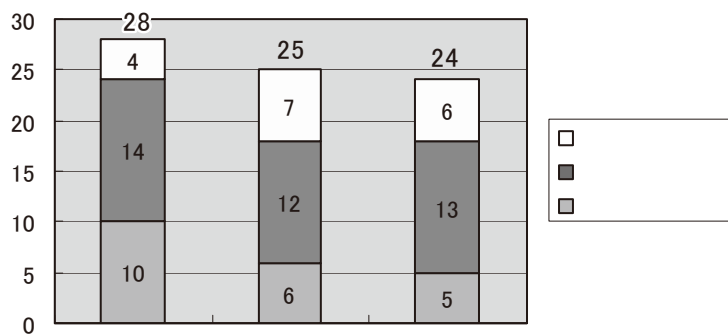
一時保護・一時保護委託延べ日数



8 児童福祉施設・里親



9 親子の絆再生事業

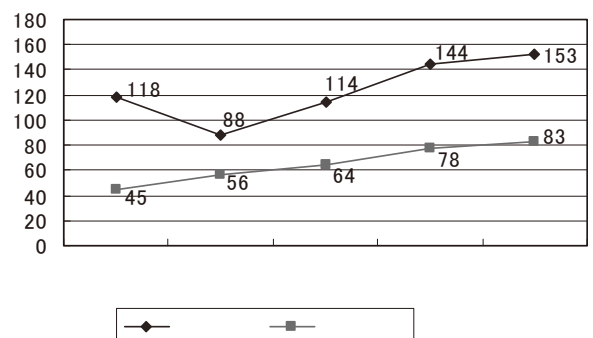


	204	302	180
	12	10	5
	12	12	10
	STEP	STEP	
		STEP	
			STEP

10 里親委託等推進事業

y y y

登録里親・委託里親数の推移



里親説明会

	H24.10.9		10
	H24.10.23		9
	H24.9.7		17
	H24.9.14		
	H24.9.28		1
	H24.10.3		12
	H24.10.16		16
	H24.10.19		38
	H24.10.22		1
	H24.11.4	112	
	H24.11.5		1
	H24.11.7		48
	H25.11.13		2
	H24.11.15		1
	H24.12.9	160	
	H25.2.6		103
	H25.3.5		91
	H24.11.12		2
	H24.11.19		1
	H24.12.28		1
	H25.1.16		2
	H24.10.11		25
	H24.10.26		30
	H24.11.2		23
	H25.2.16	*	16
	H25.2.17	*	15
	H25.2.23	*	11
	H24.10.16		3
	H24.10.30		7

* NPO

里親家庭訪問支援

	41	34	78
	41	36	89
	36	35	82
	17	17	34
	21	15	44
	17	17	165

里親施設実習実施状況

	1	1
	1	2
	1	4
	1	5
	1	1
	1	1

20	()	43	62	1	349	430		119	5	34	43	63	5	15		1,424	81	12	8	2,694
	()	(13)	(9)	(0)	(120)	(161)		(49)	(0)	(13)	(11)	(27)	(2)	(7)		(343)	(14)	(4)	(3)	(776)
		14	65	1	135	992		92	5	14	17	36	3	15	1	1,068	32	10	8	2,508
		31	104	5	402	379	5	89	6	2	30	183	40	8	2	1,113	42	27	4	2,472
	()	(10)	(35)	(1)	(131)	(97)	(1)	(13)	(2)	(1)	(14)	(37)	(34)	(5)	(0)	(361)	(4)	(4)	(2)	(752)
			230	2	112	260		30	3		7	31	51	4	4	264	16	8	18	1,040
		88	461	9	998	2,061	5	330	19	50	97	313	99	42	7	3,869	171	57	38	8,714
21		39	77	7	219	223		64	4	7	15	26	1	3	3	1,076	62	6	8	1,840
		28	52		193	855		96	2	9	25	41	2	10	3	1,186	38	15	6	2,561
		20	89	3	271	209		62	4	1	26	172	7	3		785	56	34	22	1,764
		11	31	1	129	235		41	4		2	41	13	2	1	435	26	10	1	983
		18	37	1	131	149		52		7	6	17	1	6		510	11	3	17	966
		20	22	3	104	86		19	6	12	7	37	24	6	3	372	13	5	4	743
		136	308	15	1,047	1,757	0	334	20	36	81	334	48	30	10	4,364	206	73	58	8,857
22		66	44	1	239	240		72	7	1	12	37	5	2	4	1,108	97	9	17	1,961
		19	61	7	221	810		77	4	1	12	31	3	4	3	1,229	45	8	4	2,539
		22	27		278	256		54	9		13	107	4	4		745	57	27	21	1,624
		18	71		117	238	1	16	4		15	55	10	7	11	472	27	4	11	1,077
		28	17		121	143		29		9	9	24	2	9		591	23	2	10	1,017
		17	11		100	67	1	23	1	3	5	18	30	1	1	434	10	4	11	737
		170	231	8	1,076	1,754	2	271	25	14	66	272	54	27	19	4,579	259	54	74	8,955
23		49	49		191	286		88	3		20	27		8	1	1,181	101	7	11	2,022
		35	99		241	788		152	9	7	18	55	2	28		1,235	62	21	2	2,754
		26	27	2	359	199		56	4	2	28	160	7	8		776	100	12	33	1,799
		15	72		121	179		26	2		15	43	17	34		515	20	4	4	1,067
		24	15		130	146		33	1	2	9	21	2	10		609	16	5	14	1,037
		24	17		108	88		36		3	13	30	30	1		444	23	3	35	855
		173	279	2	1,150	1,686	0	391	19	14	103	336	58	89	1	4,760	322	52	99	9,534
24		52	57		244	272		112	7		24	48	5	10	2	884	111	8	7	1,843
		41	80		212	560		112	6		19	48	6	13	4	934	64	14	2	2,115
		46	29		394	275		84	4		12	175	9	7		813	60	10	33	1,951
		22	56		156	159		41	4		20	40	77	5	2	399	17	6	4	1,008
		21	55		129	112		69	1	4	12	24	3	4		484	23	7	13	961
		31	32	3	158	92		56	7	6	10	34	21	11		415	14	4	12	906
		213	309	3	1,293	1,470	0	474	29	10	97	369	121	50	8	3,929	289	49	71	8,784

	32	171		1			1						1	1	6	213	2.4	38						
	45	161		4		2		7					2	2	3	226	2.6	64						
	54	224	1	3	2	13	4	106	6			5	3	5	2	428	4.9	81						
	73	181		1		8	5	164	5			18			7	1	463	5.3	93					
	69	160		2		10		140	4			21		4	4		414	4.7	71					
	83	172		7		10	10	201	10			17		27		3	540	6.1	92					
	76	144		5		8	2	156	8			18		26	2	4	449	5.1	81					
	71	159		1		2	4	148	6		2	22	4	14	6	3	442	5.0	77					
	85	166		4		4	7	155	1	4	8	26	2	12	10	1	485	5.5	95					
	79	126		4		2	6	137	1	4	4	19	4	8	2	4	400	4.6	86					
10	79	176		5		3	6	169	4	3	6	34	9	15	3	3	515	5.9	86					
11	60	160	1	7	1	1	11	198	2	10	16	30	6	13	1	2	519	5.9	62					
12	52	182		4		1	9	180	2	20	24	41	10	14	1	7	547	6.2	56	1				
13	41	189		4			4	174	2	61	68	61	21	4	3	2	634	7.2	45	1				
14	49	176		3		3	15	199		84	72	57	17	7	3	6	691	7.9	58					
15	32	145	1	1	1	1	12	236		62	10	25	6			9	541	6.2	32					
16	25	89		2	4	2	5	220	1	24	2	17	9	1		6	407	4.6	26					
17	23	100	1	6			4	268		17	3	12	2		2	6	444	5.1	23					
18		73		5	2		1	335		2	1	1		1		5	426	4.8						
	1,028	2,954	4	69	10	70	106	3,193	52	291	216	424	90	152	52	73	8,784	100.0	1,166	2	0			
	11.7	33.6	0.0	0.8	0.1	0.8	1.2	36.4	0.6	3.3	2.5	4.8	1.0	1.7	0.6	0.8	100.0	-						

								2				1					3
						9		4	3			6		2			24

	424
	44

20		269	692	3	51	22	80	182	1,025	12	108	75	106	35	19	4	11	2,694
	(78	(223	(1	(11	(1	(11	(58	(273	(4	(30	(32	(40	(6	(2	(2	(4	(776
		93	778	2	195	5	8	303	866	8	49	62	93	17	7	5	17	2,508
		329	908	4	28	3	13	27	771	24	86	47	145	47	12	17	11	2,472
	(53	(235	(1	(17	(3	(4	(5	(310	(7	(10	(8	(54	(23	(9	(11	(2	
		133	275	1	5	1	35	68	277	5	28	18	61	40	73	3	17	1,040
		824	2,653	10	279	31	136	580	2,939	49	271	202	405	139	111	29	56	8,714
21		217	442	6	43	21	67	109	728	7	67	14	74	15	18	2	10	1,840
		119	756		145	6	18	334	965	5	45	51	73	25	4	3	12	2,561
		257	592	1	23	1	6	106	495	13	80	29	97	46	4	3	11	1,764
		101	209		11	1	42	104	339	6	16	30	56	24	28	5	11	983
		97	223		18	4	10	85	416	4	36	22	34	11	3		3	966
		69	208	2	11	4	5	13	270	21	25	16	35	14	21	12	17	743
		860	2,430	9	251	37	148	751	3,213	56	269	162	369	135	78	25	64	8,857
22		219	484		39	26	80	101	852	12	51	18	46	11	17	3	2	1,961
		113	647		132	3	3	344	1,110	2	46	33	75	20	1	7	3	2,539
		208	574		21		14	100	466	8	59	24	85	26		10	29	1,624
		142	238		10		34	75	366	11	24	12	79	26	38	7	15	1,077
		123	203		18	4	5	83	464		31	11	50	12	5	3	5	1,017
		60	167		27	3	7	33	340	12	18	14	28	1	23	1	3	737
		865	2,313	0	247	36	143	736	3,598	45	229	112	363	96	84	31	57	8,955
23		258	548		35	23	10	98	799	16	68	35	70	12	43	1	6	2,022
		186	689		138	4	1	299	1,108	6	59	114	118	20	4	8		2,754
		214	639		27		31	94	565	10	51	19	71	31	1	5	41	1,799
		89	284	2	11		38	82	360	5	22	21	74	33	28	5	13	1,067
		69	243	2	18	5	3	75	507	7	34	19	41	8	4	2		1,037
		56	270		15	4	2	35	348	14	43	9	23	1	26	2	7	855
		872	2,673	4	244	36	85	683	3,687	58	277	217	397	105	106	23	67	9,534
24		310	557		12	2	10	14	669	14	64	48	83	21	32	4	3	1,843
		185	751	1	14	3	5	58	841	11	63	65	83	15	2	5	13	2,115
		284	729		19	3	30	9	620	9	53	23	86	29	1	27	29	1,951
		80	321	1	3	1	22	18	315	7	24	18	68	12	97	9	12	1,008
		107	231	2	13	1	1	4	457		43	22	65	4	2	4	5	961
		62	365		8		2	3	291	11	44	40	39	9	18	3	11	906
		1,028	2,954	4	69	10	70	106	3,193	52	291	216	424	90	152	52	73	8,784

)							2 7	(2 7				
	3	220	223	135	60	3	2					2	11					1	214	
	27	309	336	161	129	13	1						18					3	325	
	13	221	234	146	64		1						11			1	1	2	226	
	2	150	152	79	60	2	3					1	1					3	149	
	23	190	213	114	58	7							12				1	9	201	
	5	146	151	68	64	2	2						7				1		144	
)	36	561	597	333	171	8	4						31			1	1	9	558	
	4	46	50	22	15	8												1	46	
	113	1,843	1,956	1,058	621	43	13	0	0	0	3	91	0	0	0	2	4	28	0	1,863
	22	1,101	1,123	787	232	3	1					5	49			1	1	25		1,104
	1	131	132	96	22								3					6	1	128
	6	198	204	134	48	2						3	6					7		200
	4	151	155	107	28							4	7		1			3	1	151
	2	73	75	54	14							1	2					3		74
	3	152	155	115	26	4							4					4		153
	1	73	74	46	19							1	5					3		74
	2	58	60	49	7							1						3		60
	1	50	51	38	12							1								51
	2	44	46	30	14													1		45
	3	58	61	38	18								3					1		60
		26	26	20		5														25
	47	2,115	2,162	1,514	440	14	1	0	0	0	16	79	0	0	1	1	1	56	2	2,125
		353	353	195	148								4					6		353
	2	425	427	277	119	1	2						9			3		12	1	424
	1	231	232	139	70	3							6		1			5	8	232
		398	398	304	84								7					2	1	398
		24	24	17	6													1		24
		143	143	89	50	1												1	2	143
		371	371	267	81	2							9				1	6	2	368
		6	6	5	1															6
	3	1,951	1,954	1,293	559	7	2	0	0	0	0	35	0	0	0	4	1	33	14	1,948
	8	616	624	468	115	5	2						10			2		11		613
		259	259	192	45	2							12					5		256
		103	103	71	24								2			1		4		102
		30	30	28	1	1														30
	8	1,008	1,016	759	185	8	2	0	0	0	0	24	0	0	0	3	0	20	0	1,001
	4	130	134	94	25	4							4				1	2	3	133
		224	224	152	45	4	1						8					8	1	219
	2	127	129	90	30	2							3					3		128
	6	103	109	94	6	1	1						6					1		109
		87	87	51	25	4							4			1				85
	1	42	43	32	8	1							1						1	43
	2	203	205	169	24		1						8					1		203
		30	30	21	4	1							2			1		1		30
																				0
	15	946	961	703	167	17	3	0	0	0	0	36	0	0	0	2	1	16	5	950
		245	245	210	23	4							1				2	4	1	245
		119	119	99	14	4							1					1		119
	1	258	259	207	42	4							1			2		2		258
	2	266	268	171	74	4							5			3		5	5	267
		18	18	10	4	4														18
	3	906	909	697	157	20	0	0	0	0	0	8	0	0	0	5	2	12	6	907
	189	8,769	8,958	6,024	2,129	109	21	0	0	0	19	273	0	0	1	17	9	165	27	8,794
	2.1	97.9	100.0	68.5	24.2	1.2	0.2	0.0	0.0	0.0	0.2	3.1	0.0	0.0	0.0	0.2	0.1	1.9	0.3	100.0

			6	6	2		1		3	
			6	6			6		6	
			20	20			19	1	20	
				0					0	0.8
				0					0	
			2	2			2		2	
		0	34	34	2	0	28	1	31	
			3	3	1		2		3	
			3	3	1		2		3	
			1	1	1				1	
				0					0	0.2
				0					0	
			1	1			1		1	
		0	8	8	3	0	5	0	8	
				0					0	
				0					0	
				0					0	
			2	2			2		2	0.1
				0					0	
		0	2	2	0	0	2	0	2	
		6	77	83	12		66		78	
		3	46	49	9		36	2	47	
			92	92	2		90		92	
		2	15	17	1		16		17	7.9
		1	37	38	2		32		34	
			47	47			47		47	
		12	314	326	26	0	287	2	315	
		36	310	346	33		281	9	323	
		9	185	194	22		166		188	
		1	284	285	9		276		285	26.0
		1	80	81	13	1	61	1	76	
		5	102	107	9	1	93		103	
			62	62	1	2	59		62	
		52	1,023	1,075	87	4	936	10	1,037	
		15	161	176	16		145		161	
		9	185	194	28	1	153		182	
		1	417	418	13	3	390	10	416	29.3
			31	31	2		29		31	
		5	109	114	15	1	96		112	
		1	267	268	6	3	255	4	268	
		31	1,170	1,201	80	8	1,068	14	1,170	
		15	310	325	10	2	301	5	318	
		9		9	7		507	2	516	
			198	198	1	1	196		198	
		1	275	276	4	1	266	1	272	35.8
			77	77	1		74	2	77	
			48	48			48		48	
		25	908	933	23	4	1,392	10	1,429	
		72	867	939	74	2	796	14	886	
		30	425	455	67	1	870	4	942	
		2	1,012	1,014	26	4	971	11	1,012	100.0
		4	401	405	20	2	372	2	396	
		11	327	338	27	2	297	2	328	
		1	427	428	7	5	412	4	428	
		120	3,459	3,579	221	16	3,718	37	3,992	
		-	-	-	5.5	0.4	93.1	0.9	100.0	

	109	81	6	114	310
	55	56	7	67	185
	112	17	5	150	284
	28	7	2	43	80
	48	21	3	35	107
	39	3	7	13	62
	391	185	30	422	1,028

	33		281	9	323
	22		166		188
	9		276		285
	13	1	61	1	76
	9	1	93		103
	1	2	59		62
	87	4	936	10	1,037

	113	88	6	116	323
	53	56	8	71	188
	112	17	6	150	285
	28	7	1	40	76
	46	20	3	34	103
	39	3	7	13	62
	391	191	31	424	1,037

		((
))				
20		2	1		63	269	216	405	956
		(2			(25	(91	(60	(141	
		6		1	40	105	78	655	885
		4		2	88	338	698	156	1,286
				(0	(12	(53	(224	(19	
		1			12	127	258		398
		13	1	3	203	839	1,250	1,216	3,525
21		7		1	39	212	192	209	660
		5	2		63	110	110	561	851
		7	1	3	93	252	422	63	841
		2			29	103	44	126	304
		3		3	42	103	34	133	318
		5			8	69	151	44	277
		29	3	7	274	849	953	1,136	3,251
22		2			38	234	182	267	723
		3	3	2	50	115	138	464	775
		4			93	188	334	132	751
		6	3	2	20	139	58	155	383
		5			20	119	55	116	315
					8	60	142	15	225
		20	6	4	229	855	909	1,149	3,172
23			2		56	233	170	301	762
		3	5	1	23	194	157	484	867
		8			72	213	448	110	851
		3			14	93	61	201	372
		7	4	5	41	69	63	119	308
			2		15	56	226	28	327
		21	13	6	221	858	1,125	1,243	3,487
24		3	3		78	323	161	318	886
		6	3		47	188	182	516	942
		20	1		92	285	416	198	1,012
					17	76	31	272	396
				2	34	103	112	77	328
		2	1		47	62	268	48	428
		31	8	2	315	1,037	1,170	1,429	3,992

	1	5	1					2		9	3.8
	2	28	1	1						32	13.4
	12	102	9	1	1	4		9		138	58.0
	7	38	4	3		7				59	24.8
	22	173	15	5	1	11	0	11	0	238	100.0
	11	34	4	1		6		3		59	24.8
	6	56	4	2		2		1		71	29.8
	1	18	2			1		2		24	10.1
	1	18								19	8.0
	3	19	1	1		1				25	10.5
		28	4	1	1	1		5		40	16.8

	2	53		12	4	17	16	50	10	164	54.3
	1	3		1	3	8	2	7		25	8.3
			1							1	0.3
	3	1				3	1	17	3	28	9.3
	1	3		1		2	3	15	2	27	8.9
	4	11	2			15	2	16	7	57	18.9
	11	71	3	14	7	45	24	105	22	302	100.0
	8	19	1	1	4	5	3	26	5	72	23.8
	2	9		4	2	27	3	17	1	65	21.5
		8	1	4		6	1	25	8	53	17.5
		7				2	7	7	1	24	7.9
	1	20		1		5	3	11	3	44	14.6
		8	1	4	1		7	19	4	44	14.6

		1				2	6		9	4.1
	5	2			2	2	18		29	13.2
	6	1			5	3	110	1	126	57.3
		1			3	2	45	5	56	25.5
	11	5	0	0	10	9	179	6	220	100.0
	1	1			2	4	47		55	25.0
	10				4	1	47	4	66	30.0
		2			2	1	17		22	10.0
		1					15		16	7.3
		1			1	1	18	1	22	10.0
					1	2	35	1	39	17.7

					9		147	1	157	54.5
		1			1		21		23	8.0
							1		1	0.3
					2		23		25	8.7
	1				1		25		27	9.4
	1				7		47		55	19.1
	2	1	0	0	20	0	264	1	288	100.0
					7		60		67	23.3
	2				1		58		61	21.2
					4		46	1	51	17.7
					3		20		23	8.0
		1			5		37		43	14.9
							43		43	14.9

		84	105		47	36		272	46	72		21	3		142	414
		1,273	1,141		535	546		3,495	641	796		138	4		1,579	5,074
		62	89		44	30	1	226	32	60	1	9	3	1	106	332
		1,314	1,396		310	494	1	3,515	476	877	104	17	3	1	1,478	4,993
		45	92		40	37	4	218	24	73		5	3		105	323
		875	1,075		656	490	78	3,174	423	1,747		50	9		2,229	5,403
		36	31		14	38	2	121	18	20		7	3		48	169
		818	385		244	402	2	1,851	237	147		7	8		399	2,250
		36	45	6	40	6		133	15	55	1	22	1		94	227
		818	828	46	729	126		2,547	91	1,524	25	22	13		1,675	4,222
		15	26		11	1		53	4	28			1		33	86
		221	379		158	1		759	131	631			205		967	1,726
		278	388	6	196	148	7	1,023	139	308	2	64	14	1	528	1,551
		5,319	5,204	46	2,632	2,059	81	15,341	1,999	5,722	129	234	242	1	8,327	23,668

		272	3,495	9.6	12.8	84	1,273	3.5	15.2						
		226	3,515	9.6	15.6	62	1,314	3.6	21.2						
		218	3,174	8.7	14.6	45	875	2.4	19.4						
		121	1,851	5.1	15.3	36	818	2.2	22.7						
		133	2,547	7.0	19.2	36	818	2.2	22.7						
		53	759	2.1	14.3	15	221	0.6	14.7						
		1,023	15,341	42.0	15.0	278	5,319	14.6	19.1						

							0	5	16	12	4	4	4	45
	3	1	2				6	13	6	14	6	6		45
	1	14	9		1	1	26	6	11	8	1	4	6	36
	10	13	15	4	2		44	10	8	8	1	12	2	41
	3	13	8	3	2	1	30	7	8	9	2	3	2	31
	13	11	12	2	3	3	44	7	8	10		5	3	33
	8	16	11	2	5		42	3	7	4		6		20
	10	10	8	2	1	4	35	6	3	4		2	1	16
	23	13	10	4	4	6	60	10	1	3		7	2	23
	21	12	9	11	9	4	66	6	10	4	12	1		33
10	28	10	9	11	7	1	66	10	1	2	5	6	2	26
11	24	15	7	8	4	4	62	4	4	3	2	1	2	16
12	27	13	14	14	15	5	88	15	5	2	2	2	1	27
13	22	30	23	14	19	17	125	6	4	4	6	6	3	29
14	48	21	31	22	31	2	155	16	5	4	4	16	3	48
15	19	20	24	11	16	2	92	13	4	2	1	9		29
16	7	8	18	8	6	2	49	2		6	2	3		13
17	5	5	6	4	8	1	29	3	5	6		1	2	17
18		1	2	1			4							0
	272	226	218	121	133	53	1,023	142	106	105	48	94	33	528

	103	107	1	67	34		312	4,708	12.9	15.1	103	1,775	4.9	17.2		
	59	108	1	42	35	1	246	3,721	10.2	15.1	59	1,251	3.4	21.2		
	65	128	3	66	38	3	303	4,523	12.4	14.9	65	1,263	3.5	19.4		
	54	37	1	28	43	2	165	2,394	6.6	14.5	54	1,103	3.0	20.4		
	281	380	6	203	150	6	1,026	15,346	42.0	15.0	281	5,392	14.8	19.2		

									0	0.0
		3	1	2					6	0.6
		2	13	9					24	2.3
		7	15	16		6			44	4.3
		4	12	9		5			30	2.9
		13	14	16		3			46	4.5
		10	15	13		3			41	4.0
		9	11	12		3			35	3.4
		21	16	19		6			62	6.0
		22	13	14		14			63	6.1
		29	13	11		13			66	6.4
		22	17	13		10			62	6.0
		30	12	24		21			87	8.5
		30	33	43		19			125	12.2
		65	26	40		26			157	15.3
		26	22	27		19			94	9.2
		12	7	23		10			52	5.1
		7	5	10		5			27	2.6
			1	2		2			5	0.5
		312	246	303		165			1,026	100.0

20		152	78	69	28	1	328	4,727	13.0	14.4	35	60	1	7	103	36	896	64	225	1,221
		(46	(1	(28	(19	(0					(9	(29	(1	(2	(41			(64	(25	
		110		45	24		179	3,069	8.4	17.1	25	24	2	7	58	31	459	99	426	1,015
		197		42	36	1	276	4,216	11.4	10.5		73	10	2	85		1,909	98	143	2,150
		(33		(6	(11		(50		(1.6			(17	(10	(1						
		63	6	22	22	5	118	1,672	4.5	14.2		5			5		24			24
		522	84	178	110	7	901	13,684	37.5	15.2	60	162	13	16	251	67	3,288	261	794	4,410
21		152	36	72	20	8	288	4,143	11.4	14.4	16	30	7	2	55	16	478	64	10	568
		144		31	38		213	3,297	9.0	15.5	34	15	1	3	53	34	280	32	146	492
		219		26	28		273	4,486	12.3	16.4	4	50	6	2	62	5	935	171	215	1,326
		70	20	23	28		141	2,265	6.2	16.1		13		7	20		246		102	348
		(64	(2	(38	(15						4	53	3		60	4	1,212	162		1,378
		(52		(5	(4		(61	(791				26	1		27		539	7		546
		585	56	152	114	8	915	14,191	38.9	15.5	58	187	18	14	277	59	3,690	436	473	4,658
22		167	2	60	18	1	248	4,717	12.9	19.0	18	54	3	2	77	21	908	27	310	1,266
		150	1	33	23		207	3,545	9.7	17.1	38	47	4		89	42	1,004	69		1,115
		177	0	33	25	2	237	4,438	12.2	18.7	4	64	4	3	75	4	1,714	608	64	2,390
		87	15	21	32	3	158	2,246	6.2	14.2	2	18	11	1	32	3	168	101	4	276
		(57	(2	(39	(11						4	55	2	4	65	5	1,574	2	81	1,662
		(51		(6	(1		(58	(630			1	32		3	36	1	662		44	707
		581	18	147	98	6	850	14,946	40.9	17.6	67	270	24	13	374	76	6,030	807	503	7,416
23		177	7	67	20	2	273	4,586	12.6	16.8	33	90	10	1	134	36	1,595	132	39	1,802
		170	3	54	23		250	3,331	9.1	13.3	46	59	7	5	117	49	1,170	36	290	1,545
		158	2	32	37	1	230	3,918	10.7	17.0	1	69	5		75	1	1,278	15		1,294
		85	5	25	24		139	1,877	5.1	13.5		24	27		51		192	147		339
		(65	(10	(41	(16						17	45	3		65	17	919	257		1,193
		(35		(12	(4		(51	(668				31		4	35		925		384	1,309
		590	17	178	104	3	892	13,712	37.6	15.4	97	318	52	10	477	103	6,079	587	713	7,482
24		210	1	67	34		312	4,708	12.9	15.1	37	95	7	3	142	38	1,310	137	94	1,579
		167	1	42	35	1	246	3,721	10.2	15.1	34	62	5	5	106	36	1,177	78	187	1,478
		193	3	66	38	3	303	4,523	12.4	14.9	18	85		2	105	19	2,199		11	2,229
		91	1	28	43	2	165	2,394	6.6	14.5	13	20	14	1	48	13	345	27	14	399
		(81	(6	(40	(6						30	60	4		94	30	1,507	138		1,675
		(41		(11	(1		(53	(759				27	4	2	33		640	39	288	967
		661	6	203	150	6	1,026	15,346	42.0	15.0	132	349	34	13	528	136	7,178	419	594	8,327

	7	16	16	3	8	4	54
	161	160	107	84	115	21	648
	2	3		7	1		13
	31	33	24	15	16	3	122
	6	9	5	3	2	2	27
	6	3	3	2	7	2	23
	17	36	19	10	19	5	106
			3		4	6	13
		1	2	2			5
	230	261	179	126	172	43	1,011

	54	7	1		8	1	2					3	5		1	6	53
	62	2	3	1	6	5					5	10		1		1	57
	116	9	4	1	14	6	2	0	0	0	5	13	5	1	1	7	110

		1 6	7 12	13 15	16	
	1	12	20	11	9	53
		5	21	11	20	57
	1	17	41	22	29	110

	145	19	11	153
	78	13	8	83

		217	46	928	705	125	256	66	2,253		14	670		
		202	56	1,620	518	95	120	1	2,276		12	445		
		140	102	3,001	443	66	175	19	2,551		8	846		
		77	39	18	233	57	95	3	947			624		
		129	36	1,584	349	58	75	3	667		13	313		
		39			213	45	69	64	208		2	129		
		804	279	7,151	2,461	446	790	156	8,902	0	49	3,027	0	
		10							1,275		7	204		
									678		4	22		
									683		11	42		
		2					4		414		15	147		
									495		3	57		
									199		2	130		
		12	0	0	0	0	4	0	3,744	0	42	602	0	
		30							1,935		41	177		
									708		4	18		
									1,196		1	42		
		160							691		2	113		
									1,075		8	44		
									703		11	163		
		190	0	0	0	0	0	0	6,308	0	67	557	0	
		257	46	928	705	125	256	66	5,463		62	1,051	0	
		202	56	1,620	518	95	120	1	3,662		20	485	0	
		140	102	3,001	443	66	175	19	4,430		20	930	0	
		239	39	18	233	57	99	3	2,052		17	884	0	
		129	36	1,584	349	58	75	3	2,237		24	414	0	
		39			213	45	69	64	1,110		15	422	0	
		1,006	279	7,151	2,461	446	794	156	18,954	0	158	4,186	0	

1 平成24年度の主な事業について

(1) 児 虐待防止 演会、セミナーの開催

	H24.12.26			126
	H24.11.17			170
	H24.11.6			54
	H25.1.26			168

(2) 市町村職員 研修（福岡児 相談所主催）

	H24.9.13			40
	H24.9.25			49
	H24.10.5			43
	H24.10.11			36
	H24.10.16			40

(3) 市町村 連 会議

	H24.10.3			31
	H24.5.25			20
	H24.10.29		23	22
	H25.3.19		24	13
	H24.7.11			24
	H24.7.23			16
	H24.11.28			17
	H25.3.1			13
	H24.7.13			15

(4) 児 相談所初任職員研修 (福岡児 相談所主催)

H24.4.23	
H24.4.24	
H24.4.26	

H24.10.5	
H24.10.11	
H24.11.	
H24.11.8	

10.5 10.11

(5) 児 相談所職員専門研修（福岡児 相談所主催）

H24.5.15 H24.7.17 H24.9.18 H24.11.1 H25.1.22 H25.3.19			14
H24.8.27			31
H24.8.28			37

H24.6.11 H24.6.12 H24.6.13			97

H24.6.19			18
H24.8.21			
H24.10.30			
H24.12.25			
H25.2.26			
H24.11.1			54
H25.1.10			
H25.3.19			

(6) 研修

	H25.3.10		47
	H24.9.2		15
	H25.2.24		9
	H24.6.7		26
	H25.3.12		28

	H24.7.9		7
	H24.12.10		6

	H24.7.24 H24.7.26			1
	H24.12.4 H24.12.18			2
	H24.12.27 H25.1.7			

	H24.8.2 H24.8.3			15
	H25.1.18 H25.1.21			10

(7) 要保護児 に関する 警本部・児 相談所連 会議

24.6.5			16

	811-0201					S21.10.1	(092) 606-2109		(092) 607-7421
	812-0063					S21.10.1	(092) 621-2241		(092) 629-5529
	811-1131					S30.8.1	(092) 803-1217		(092) 803-1218

	833-0034					S26.7.1	(0942) 52-2404		(0942) 53-6583
--	----------	--	--	--	--	---------	----------------	--	----------------

	836-0096				(10	S40.5.1	(0944)53-0122	(0944)53-4156
	820-0051				(80	S37.4.1	(0948)22-3022	(0948)24-0142
	832-0004				(20	S47.4.1	(0944)72-0012	(0944)72-0113
	833-0053				(20	S37.7.1	(0942)53-8342	(0942)53-9733
	830-1212		8		(60	S38.6.1	(0942)77-2789	(0942)77-4278
	822-1302				(30	S48.4.1	(0947)26-1401	(0947)26-2054
	871-0926				(30	S40.11.1	(0979)72-2181	(0979)72-4241
	803-0186			1	(30	S42.6.1	(093)451-1031	(093)451-3530
	808-0132			1	(60	S46.10.1	(093)601-2261	(093)601-0353
	815-0042				(80	S22.2.15	(092)551-4011	(092)551-4012
	814-0161				(7	S24.12.17	(092)862-6688	(092)871-8730
	814-0161				(15	S24.12.17	(092)871-1970	(092)871-8730

	811-0119					110	S28.3.1	(092)962-2231	(092)962-3113
	839-1216				(150	S32.8.31	(0943)73-0152	(0943)73-0524
	832-0058				(55	H10.9.30	(0944)73-0039	(0944)73-0059
	811-2501				()	88	S51.9.25	(092)976-2281	(092)976-2172
	830-1226			1	(120	S44.4.1	(0942)77-1393	(0942)77-1190
	822-1212				(50	S58.9.10	(0947)22-5888	(0947)22-5889

802-0803	2	(5	6	(093)922-5596	(093)922-5596
802-0803	2	(65	H 2. 4.	(093)922-5596	(093)922-5596
3			0	S45. 4.	(092)943-233	(092)943-8775
4			80	S50. 4.	2	(0944)58-6804
			0	S44. 4.	(092)565-5534	(092)566-0702
837-0922		(30		(0944)53-8204	
830-0052		(25	S56. 6.	2	
2		(20	S60. 4.	(0943)73-2978	(0943)73-2979
4		(30		(092)925-468	(092)925-4464
820-005		(30	S52. 4.	(0948)24-4660	
4			0	8	(09496)2-2253	(09496)2-2254
824-0026		(30	3	(0930)25-5343	(0930)25-5342
828-0064		(40	S56. 4.	(0979)82-4473	
2		(30		(0942)72-722	(0942)72-7222
2		(5	S57. 5.	(0942)72-722	(0942)72-7222

(0942)72-7222

